



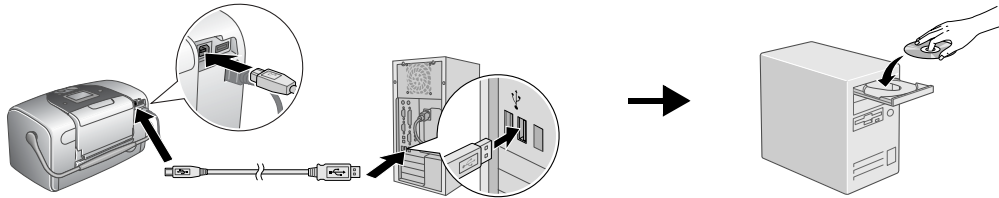
Cautions must be observed to avoid damage to your equipment.

Notes contain important information and useful tips on the operation of your printer.

If you use the printer by connecting to PC, install the software following this manual.

Installing the Printer Software

1. Make sure the printer is turned off and the green light around **Print** button is off.
2. Connect the printer and computer with a USB cable, then insert the printer software CD into the CD-ROM drive.



3. Install the printer software.

Select your country or area of residence if the selection window appears. Then except where otherwise instructed, click or double-click the areas circled to proceed.

! Caution:

Turn off all virus protection programs before installing the printer software.

Note:

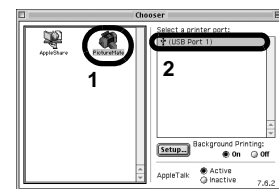
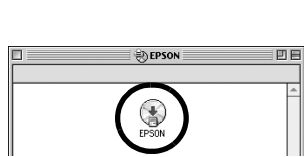
If the language selection window appears, select your preferred language.

For Windows



Follow the on-screen instructions.

For Mac OS 9.1 or later



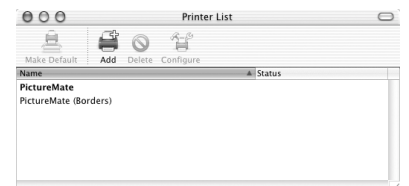
Follow the on-screen instructions. After installing the software and restarting the computer, turn on the printer.

For Mac OS X 10.1.3 or later

Note:

- This software does not support the UNIX File System (UFS) for Mac OS X. Install the software on a disk or in a partition that does not use UFS.
- This product does not support the Mac OS X Classic environment.

1. Open the **Mac OS X** folder, then double-click the **EPSON** icon. If the Authorization dialog box appears, (for Mac OS 10.1.x, click the **OK** icon,) enter the **Password or phrase**, then click **OK**.
2. Follow the on-screen instructions to install the software.
3. After installing the software and restarting the computer, press the **Power** button to turn on the printer.
4. Open the **Applications** folder on your hard drive, then open the **Utilities** folder and double-click the **Print Center** icon. Click **Add** icon (for Mac OS 10.1.x, click **Add Printer**) in the Printer List dialog box.
5. Select **EPSON USB** from the pop-up menu. Select **PictureMate** in the Product list, then select **All** from the Page Setup pop-up menu. Click **Add**.
6. Make sure the Printer List contains the printer(margin-type) options as illustrated below. See the *Reference Guide* for more details.



7. Close Printer List dialog box.

Note:

When you print, be sure to match the **Format for** setting in the Page Setup dialog box and the **Printer** setting in the Print dialog box. Otherwise, the data may not be printed correctly. See the *Reference Guide* for more details.

After installation is complete, see the *Reference Guide* for detailed information about printing from your computer for the first time.

The CD-ROM includes, EPSON PhotoQuicker, EPSON PhotoStarter, EPSON CardMonitor, EPSON PRINT Image Frammer Tool, and PIF DESIGNER.

EPSON PhotoQuicker is a fun and easy to use program with a number of features that help you create outstanding photos. It also allows you to create borderless photos.

For more details, double-click the **PM Software Guide** icon on the desktop to view *Photo Print Software Setup*.

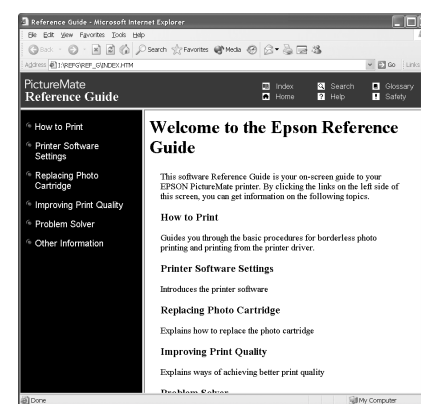


Viewing the Reference Guide

The *Reference Guide* provides detailed information about printing from a computer, printer maintenance, problem solving, and safety.

To view the *Reference Guide*, double-click the  **PM Reference Guide** icon on the desktop.

In Windows, you can also access the *Reference Guide* via the Start menu. To do so, click **Start**, point to **All Programs** in Windows XP or **Programs** in Windows Me, 98, or 2000, point to **EPSON**, then select **PM Reference Guide**.



All rights reserved. No part of this publication may be reproduced, stored in a retrieval system, or transmitted in any form or by any means, electronic, mechanical, photocopying, recording, or otherwise, without the prior written permission of Seiko Epson Corporation. The information contained herein is designed only for use with this Epson printer. Epson is not responsible for any use of this information as applied to other printers. Neither Seiko Epson Corporation nor its affiliates shall be liable to the purchaser of this product or third parties for damages, losses, costs, or expenses incurred by the purchaser or third parties as a result of: accident, misuse, or abuse of this product or unauthorized modifications, repairs, or alterations to this product, or (excluding the U.S.) failure to strictly comply with Seiko Epson Corporation's operating and maintenance instructions.

Seiko Epson Corporation shall not be liable for any damages or problems arising from the use of any options or any consumable products other than those designated as Original Epson Products or Epson Approved Products by Seiko Epson Corporation. Seiko Epson Corporation shall not be held liable for any damage resulting from electromagnetic interference that occurs from the use of any interface cables other than those designated as Epson Approved Products by Seiko Epson Corporation. EPSON is a registered trademark and EPSON Stylus is a trademark of Seiko Epson Corporation.

Microsoft and Windows are registered trademarks of Microsoft Corporation.

Apple and Macintosh are registered trademarks of Apple Computer, Inc.

Copyright 2001 Seiko Epson Corporation. All rights reserved. PRINT Image Matching is a trademark of Seiko Epson Corporation. The PRINT Image Matching logo is a trademark of Seiko Epson Corporation.

Copyright 2002 Seiko Epson Corporation. All rights reserved. USB DIRECT-PRINT is a trademark of Seiko Epson Corporation. The USB DIRECT-PRINT logo is a trademark of Seiko Epson Corporation.

Part of the photo data stored on the Printer Software CD-ROM is licensed from Design Exchange Co., Ltd. Copyright © 2000 Design Exchange Co., Ltd. All rights reserved.

DPOF is a trademark of CANON INC., Eastman Kodak Company, Fuji Photo Film Co., Ltd. and Matsushita Electric Industrial Co., Ltd.

Zip® is a registered trademark of Iomega Corporation.

The BLUETOOTH trademarks are owned by Bluetooth SIG, Inc., U.S.A. and licensed to Seiko Epson Corporation.

SD is a trademark.



Memory Stick, Memory Stick PRO and MEMORY STICK PRO are trademarks of Sony Corporation.

xD-Picture Card™ is a trademark of Fuji Photo Film Co., Ltd.

General Notice: Other product names used herein are for identification purposes only and may be trademarks of their respective owners. Epson disclaims any and all rights in those marks.