

# Network Guide

## Copyright

# Copyright

No part of this publication may be reproduced, stored in a retrieval system, or transmitted in any form or by any means, electronic, mechanical, photocopying, recording, or otherwise, without the prior written permission of Seiko Epson Corporation. No patent liability is assumed with respect to the use of the information contained herein. Neither is any liability assumed for damages resulting from the use of the information herein. The information contained herein is designed only for use with this Epson product. Epson is not responsible for any use of this information as applied to other products.

Neither Seiko Epson Corporation nor its affiliates shall be liable to the purchaser of this product or third parties for damages, losses, costs, or expenses incurred by the purchaser or third parties as a result of accident, misuse, or abuse of this product or unauthorized modifications, repairs, or alterations to this product, or (excluding the U.S.) failure to strictly comply with Seiko Epson Corporation's operating and maintenance instructions.

Seiko Epson Corporation and its affiliates shall not be liable for any damages or problems arising from the use of any options or any consumable products other than those designated as Original Epson Products or Epson Approved Products by Seiko Epson Corporation.

Seiko Epson Corporation shall not be held liable for any damage resulting from electromagnetic interference that occurs from the use of any interface cables other than those designated as Epson Approved Products by Seiko Epson Corporation.

© 2015 Seiko Epson Corporation. All rights reserved.

The contents of this manual and the specifications of this product are subject to change without notice.

## Trademarks

# Trademarks

- ❑ EPSON® is a registered trademark, and EPSON EXCEED YOUR VISION or EXCEED YOUR VISION is a trademark of Seiko Epson Corporation.
- ❑ Microsoft®, Windows®, and Windows Vista® are registered trademarks of Microsoft Corporation.
- ❑ Apple, Macintosh, Mac OS, OS X, AirPort, AirMac, Bonjour, and Safari are trademarks of Apple Inc., registered in the U.S. and other countries. AirPrint is a trademark of Apple Inc.
- ❑ Android™ is a trademark of Google Inc.
- ❑ General Notice: Other product names used herein are for identification purposes only and may be trademarks of their respective owners. Epson disclaims any and all rights in those marks.

## Contents

### Copyright

### Trademarks

### About this Manual

Marks and Symbols. . . . .	6
Definitions of Terms Used in this Manual. . . . .	6
Artworks. . . . .	6
Operating System References. . . . .	7

### Introduction

Introduction of This Manual. . . . .	8
Using the Printer from a Smart Device. . . . .	8
Using the printer from a Computer. . . . .	8
Connecting the Printer to an Access Point. . . . .	8

### Connecting the Printer to a Smart Device

Connection Type - Wi-Fi. . . . .	9
Connection Settings Between the Printer and a Smart Device. . . . .	9
Connecting through an Access Point. . . . .	9
Preparing an Application and Wi-Fi Connection from a Smart Device. . . . .	10
Checking the Connection Between the Printer and the Smart Device. . . . .	11
Additional Connections for a Smart Device. . . . .	13

### Connecting the Printer and a Computer

Connection Types Between the Printer and a Computer. . . . .	14
Wi-Fi. . . . .	14
Ad Hoc Mode. . . . .	14
USB Connection. . . . .	15
Connection Settings Between the Printer and a Computer. . . . .	15
Connecting to Wi-Fi. . . . .	15
Connecting in Ad Hoc Mode (for Windows Only). . . . .	19
Setting up a USB Connection. . . . .	19
Changing a Connection Method Between the Printer and a Computer. . . . .	22

Replacing or Adding New Access Points. . . . .	22
Changing the Printer Connection to Wi-Fi. . . . .	22
Adding a USB Connection to the Printer. . . . .	25
Adding Computers. . . . .	27
Adding Computers Using the Software Disc (for Windows Only). . . . .	27
Adding Computers from the Website - Windows. . . . .	29
Adding Computers from the Website - Mac OS X. . . . .	31
Adding Computers Manually - Windows. . . . .	31
Adding Computers Manually - Mac OS X. . . . .	31

### Making Wi-Fi Network Settings from the Printer's Control Panel

Setting Up Automatically by Pressing a Button (WPS). . . . .	33
PIN Code Setup (WPS). . . . .	34

### Checking the Printer's Network Connection Status

Network Lamp. . . . .	36
Printing a Network Status Sheet. . . . .	36

### Advanced Network Settings

Setting Up from Web Config. . . . .	37
-------------------------------------	----

### Disconnecting or Initializing the Network

Initializing the Network Settings from the Printer's Control Panel. . . . .	38
Disabling Wi-Fi from Web Config. . . . .	38

### Solving Problems

Cannot Connect by Wi-Fi. . . . .	39
A: Cannot Connect to the Internet from a Smart Device. . . . .	39
B: Cannot Print with Wi-Fi from a Smart Device. . . . .	40
C: Cannot Connect to the Internet from a Computer. . . . .	40
D: Cannot Print with Wi-Fi from a Computer. . . . .	43
E: Cannot Update the Firmware. . . . .	44

**Contents**

F: The Internet Disconnects when no Changes were made to the Network Environment. . . . . 44

Checking the Connection Using a Ping Command. .44

    Checking the Connection Using a Ping Command - Windows. . . . . 44

    Checking the Connection Using a Ping Command - Mac OS X. . . . . 45

**Appendix**

Basic Network Information Used by the Printer. . . . 48

    Type of Network Used by the Printer. . . . . 48

    Summary of Networks with a Relay Point. . . . . 48

    Networks Without a Relay Point (Wi-Fi Direct/Ad Hoc). . . . . 52

    Public Line Networks. . . . . 53

Network Functions and IPv4/IPv6 Tables. . . . . 53

    Client Operating Systems that Support the TCP/IP Protocol. . . . . 53

    The support table for NW function and IPv4/IPv6 Tables. . . . . 54

Combinations that can be Connected at the Same Time. . . . . 54

Ports and Protocols. . . . . 54

    Setting Up Standard TCP/IP Ports – Windows. . . 55

    Setting Up a WSD Port – Windows. . . . . 58

    Checking the Print Port. . . . . 59

# About this Manual

---

## Marks and Symbols

**Caution:**

*Instructions that must be followed carefully to avoid bodily injury.*

**Important:**

*Instructions that must be observed to avoid damage to your equipment.*

**Note:**

*Instructions containing useful tips and restrictions on printer operation.*

**➔** Related Information

Clicking this icon takes you to related information.

---

## Definitions of Terms Used in this Manual

The following terms are used in this manual.

 Wi-Fi (Wireless LAN)

Wi-Fi (Wireless LAN) is a network that wirelessly communicates data. This term is the same as the term "Infrastructure mode" that communicates data through a relay point (for example, an access point) when connecting printers and computers.

 Access Point

This relays communication between Wi-Fi devices. We also use the term "access point" for a wireless router that has a relay function. Many wireless routers have a LAN port to allow wired LAN connections. These can also be used as a hub for wired LAN connections.

 Smart Device

This term is a generic term for Android devices and iOS devices that are capable of communicating with a printer. This term includes smart phones and tablets.

 Password

This is an encryption key used in the security for the access point. A password may also be called a "WEP key", a "WPA passphrase", a "Pre-Shared Key", and so on according to the access point or security system being used. We use "Password" in this manual.

---

## Artworks

Details of screen shots and illustrations may vary by model, but the instructions are the same.

Screen shots are from Windows 7 and Mac OS X v 10.10.x. Details may vary between OS versions.

Some of the menu items in the screen shots may vary by model.

---

## Operating System References

### Windows

In this manual, terms such as "Windows 8.1", "Windows 8", "Windows 7", "Windows Vista", and "Windows XP" refer to the following operating systems. Additionally, "Windows" is used to refer to all versions.

- Microsoft® Windows® 8.1 operating system
- Microsoft® Windows® 8 operating system
- Microsoft® Windows® 7 operating system
- Microsoft® Windows Vista® operating system
- Microsoft® Windows® XP operating system
- Microsoft® Windows® XP Professional x64 Edition operating system

### Mac OS X

In this manual, "Mac OS X v10.10.x" refers to OS X Yosemite, "Mac OS X v10.9.x" refers to OS X Mavericks, and "Mac OS X v10.8.x" refers to OS X Mountain Lion. Additionally, "Mac OS X" is used to refer to "Mac OS X v10.10.x", "Mac OS X v10.9.x", "Mac OS X v10.8.x", "Mac OS X v10.7.x", and "Mac OS X v10.6.8".

# Introduction

---

## Introduction of This Manual

This manual introduces the procedures for connecting smart devices and computers to the printer, building a network connection, and making network settings for the printer. To use the printer with Wi-Fi, you need a relay point such as an access point or a router. If you have a relay point, we recommend that you use it to connect the printer by Wi-Fi. If you do not have a relay point, you can also connect the printer directly to your smart device by Wi-Fi.

This manual explains the procedures for making network settings on computers and smart devices. Follow the procedure that best suits your network setup.

Before you start reading this manual, you have to finish the initial setup for the printer. See the manual supplied with the printer for details. Also, if you want to make the printer's network settings from a computer, connect a computer and relay point (access point), and connect the computer to the network beforehand.

---

## Using the Printer from a Smart Device

The [Connecting the Printer to a Smart Devices] section explains how to connect the printer to a smart device. If you want to connect a computer and a smart device to the printer at the same time, we recommend connecting the printer to the computer first. This allows you to connect the smart device to the printer simply by selecting the same network (SSID) as the printer.

### Related Information

➔ [“Connecting the Printer to a Smart Device” on page 9](#)

---

## Using the printer from a Computer

The [Connecting the Printer and a Computer] section explains how to make printer connection settings from a computer. You can set up by using the software disc, set up from the website, or set up manually.

### Related Information

➔ [“Connecting the Printer and a Computer” on page 14](#)

---

## Connecting the Printer to an Access Point

Explains how to connect the printer to an access point. Make settings from the printer's control panel.

### Related Information

➔ [“Making Wi-Fi Network Settings from the Printer's Control Panel” on page 33](#)

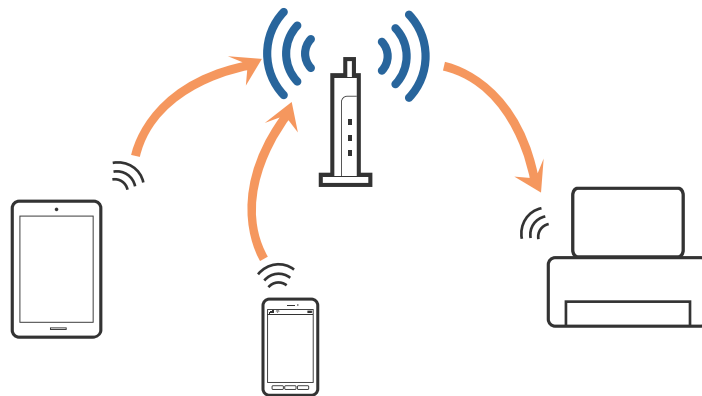


# Connecting the Printer to a Smart Device

---

## Connection Type - Wi-Fi

Connect the printer and the smart device to the access point. This is the typical connection method for home or office networks where computers are connected by Wi-Fi through the access point. The illustrations may vary by model.



### Related Information

- ➔ [“Basic Network Information Used by the Printer” on page 48](#)
- ➔ [“Connecting by Wi-Fi” on page 9](#)

---

## Connection Settings Between the Printer and a Smart Device

### Connecting through an Access Point

#### Connecting by Wi-Fi

Connect the printer to the access point by Wi-Fi, and select the same network (SSID) as the smart device. Make the following settings.

#### ***Making Wi-Fi Settings on the Printer***

Use one of the following methods to set up the Wi-Fi and connect to the access point.

- From the printer's control panel
  - Make Wi-Fi settings from the printer's control panel.
- From the computer
  - Make Wi-Fi settings for the printer automatically from the computer if your computer is connected to the network by Wi-Fi.

## Connecting the Printer to a Smart Device

**Note:**

Connect a smart device to the same network as the printer when you want to connect the smart device to a printer that has already been connected to the network.

**Related Information**

➔ [“Making Wi-Fi Network Settings from the Printer's Control Panel” on page 33](#)

### **Preparing an Application and Wi-Fi Connection from a Smart Device**

Install Epson iPrint on your smart device, and then connect it to the same network (SSID) as the printer. Epson iPrint is a free application for smart devices. This allows you to print photos and other content from the smart device.

**Related Information**

➔ [“Preparing an Application and Wi-Fi Connection from a Smart Device” on page 10](#)

### **Checking the Connection Using Epson iPrint**

Check the connection between the printer and the smart device using Epson iPrint.

**Related Information**

➔ [“Checking the Connection Between the Printer and the Smart Device” on page 11](#)

## Preparing an Application and Wi-Fi Connection from a Smart Device

Connect a smart device to a printer that is already connected to the network by Wi-Fi.

1. Install Epson iPrint on your smart device.



Install Epson iPrint on your smart device from the following URL or QR code.

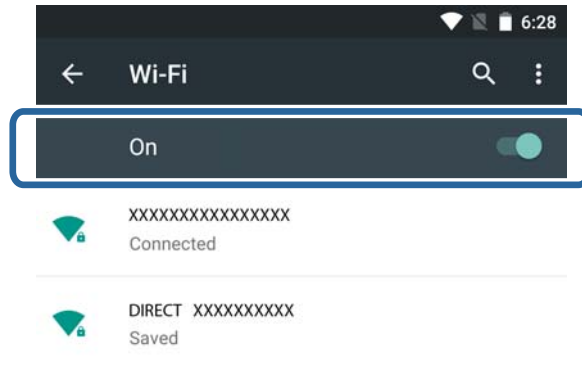
<http://ipr.to>



## Connecting the Printer to a Smart Device

2. Select Wi-Fi from the settings screen on your smart device, and then enable Wi-Fi.

See the documentation provided with your smart device for the operating instructions.



3. Select the same SSID as the printer, and then enter the password.

You can check the SSID that the printer has already connected to by printing a network status sheet. For the SSID and password, contact the person who set up the access point, or see the documentation provided with the access point.

4. After establishing a connection, return to the home screen on the smart device.

Check the connection between the printer and the smart device using Epson iPrint.

### Related Information

- ➔ [“Checking the Connection Between the Printer and the Smart Device” on page 11](#)
- ➔ [“Printing a Network Status Sheet” on page 36](#)

---

## Checking the Connection Between the Printer and the Smart Device

Make printer settings from a printing application and check the connection. Epson iPrint is used here as an example.

1. Run Epson iPrint.



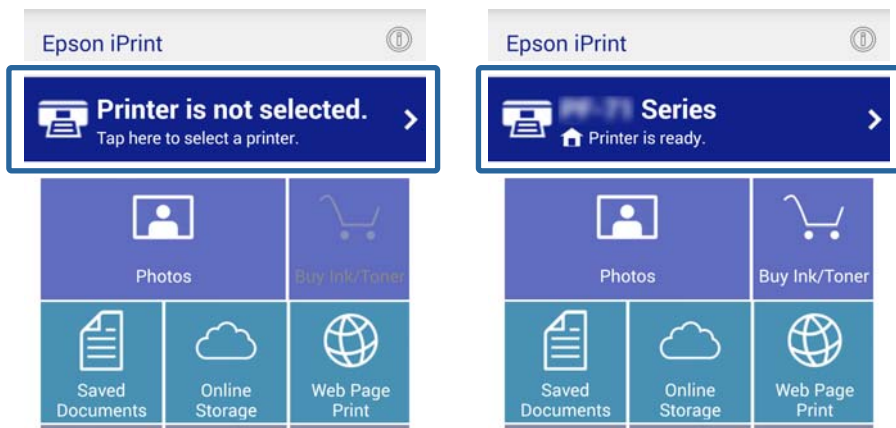
If Epson iPrint is not installed, install it on your smart device from the following URL or QR code.

## Connecting the Printer to a Smart Device

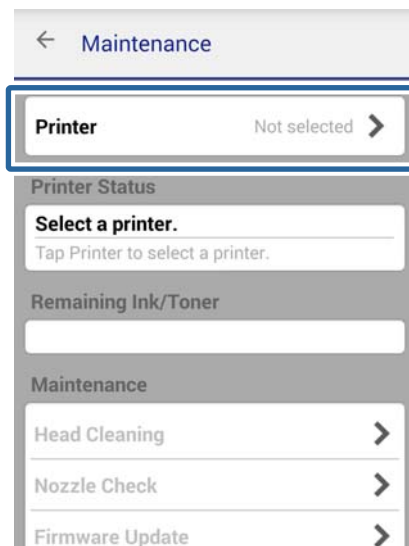
<http://ipr.to>



2. Tap **Printer is not selected.** at the top of the screen, or tap the printer name.



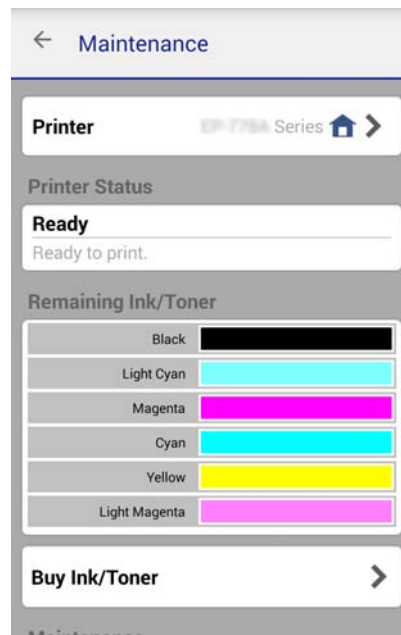
3. Tap **Printer.**



## Connecting the Printer to a Smart Device

4. Select the printer name you want to connect to.

If the connection is successful, the remaining ink/toner levels are displayed.



---

## Additional Connections for a Smart Device

Connect the smart device and the printer to the same Wi-Fi network. See the documentation provided with your smart device for instructions on making network settings.

You can check the connection between the printer and the smart device using Epson iPrint.

### Related Information

- ➔ [“Preparing an Application and Wi-Fi Connection from a Smart Device”](#) on page 10
- ➔ [“Checking the Connection Between the Printer and the Smart Device”](#) on page 11

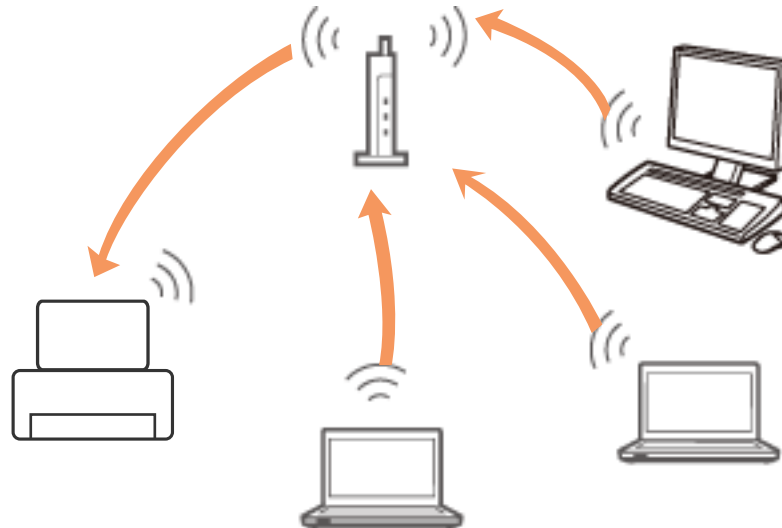
# Connecting the Printer and a Computer

## Connection Types Between the Printer and a Computer

Use one of the following connection methods to connect the printer to a computer. The illustrations may vary by model.

### Wi-Fi

This connection method is recommended for home or office networks where computers and smart devices are connected by Wi-Fi through an access point.

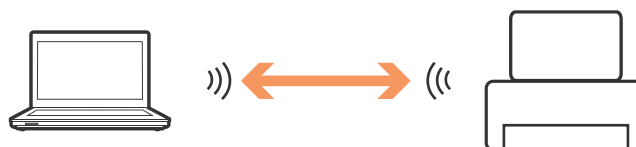


#### Related Information

➔ [“Connecting to Wi-Fi” on page 15](#)

### Ad Hoc Mode

You can connect the printer directly to a computer without using an access point. To use this mode, your computer's wireless adapter needs to support Ad Hoc mode. See the documentation provided with the computer for details.



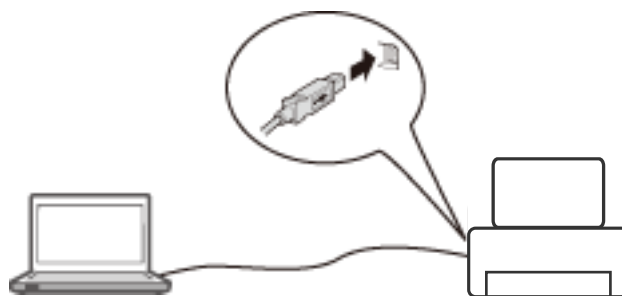
#### Related Information

➔ [“Connecting in Ad Hoc Mode \(for Windows Only\)” on page 19](#)

## Connecting the Printer and a Computer

### USB Connection

Connect the printer to a computer with a USB cable.



#### Related Information

➔ [“Setting up a USB Connection” on page 19](#)

---

## Connection Settings Between the Printer and a Computer

Make sure you finish setting up the printer before connecting to a computer. (Connecting the power cable, installing ink, and loading paper.)

### Connecting to Wi-Fi

You can set up Wi-Fi on your printer from a computer using one of the following methods.

#### Related Information

- ➔ [“Setting Up a Wi-Fi Connection from the Software Disc \(for Windows Only\)” on page 15](#)
- ➔ [“Setting Up Wi-Fi from the Website” on page 16](#)
- ➔ [“Connecting to Wi-Fi Manually” on page 19](#)

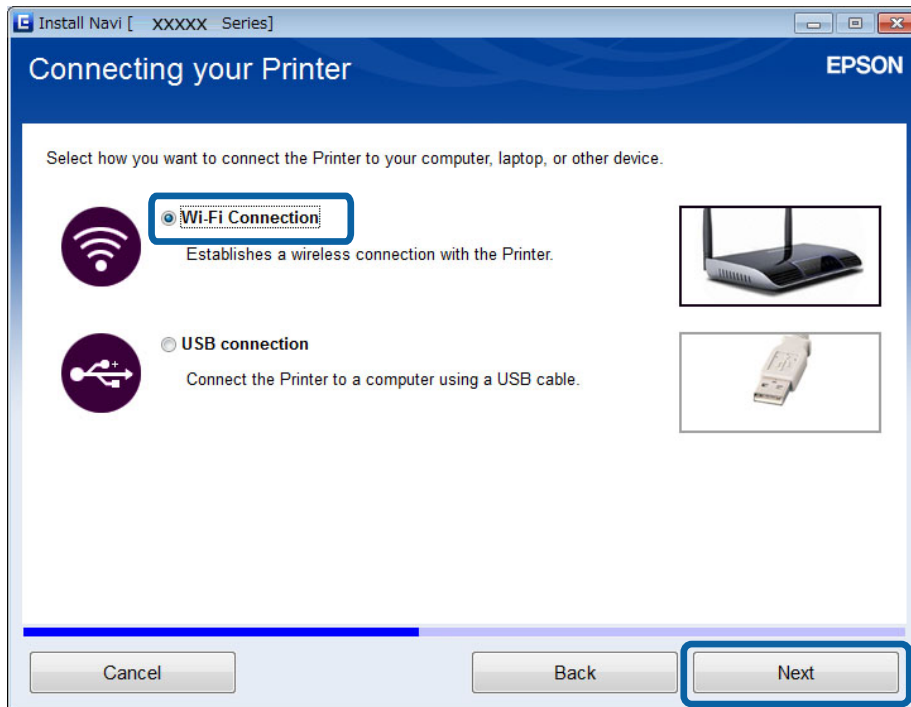
### Setting Up a Wi-Fi Connection from the Software Disc (for Windows Only)

This method is recommended for Windows users to automatically set up a connection.

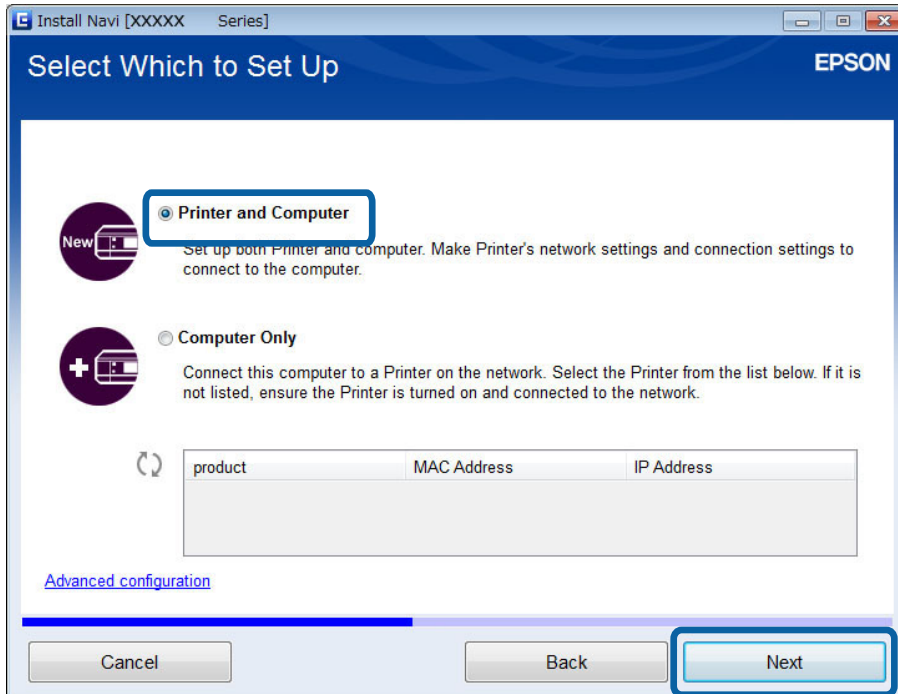
1. Insert the software disc supplied with the printer into the computer.
2. Follow the on-screen instructions.

## Connecting the Printer and a Computer

3. Select **Wi-Fi Connection** on the Connecting your Printer screen.



4. Select **Printer and Computer** on the Select Which to Set Up screen.



5. Follow the on-screen instructions.

## Setting Up Wi-Fi from the Website

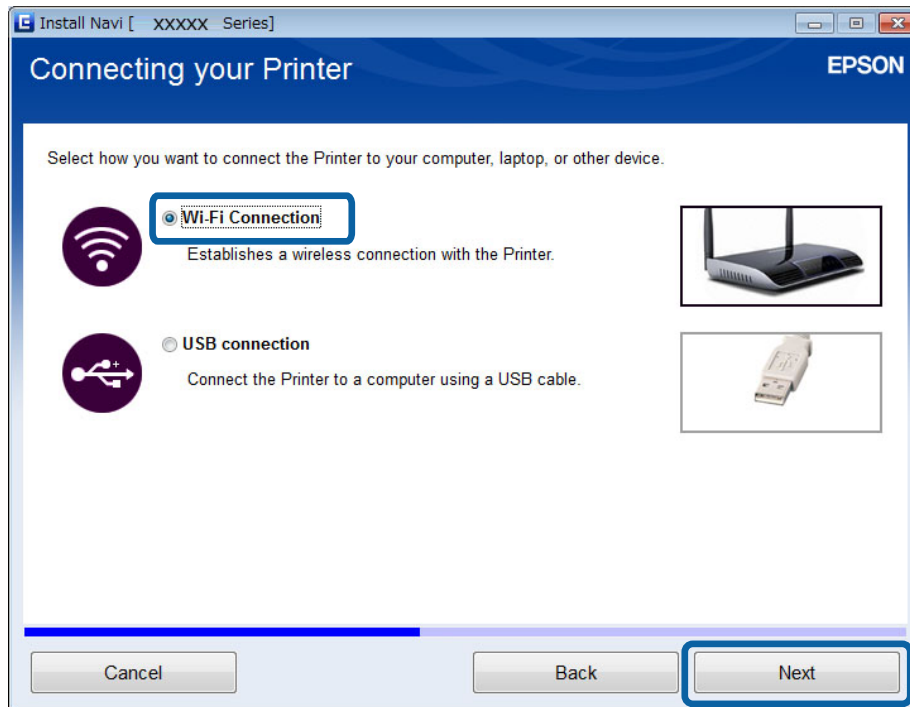
This method is for Mac OS X users or if you cannot use the software disc.



## Connecting the Printer and a Computer

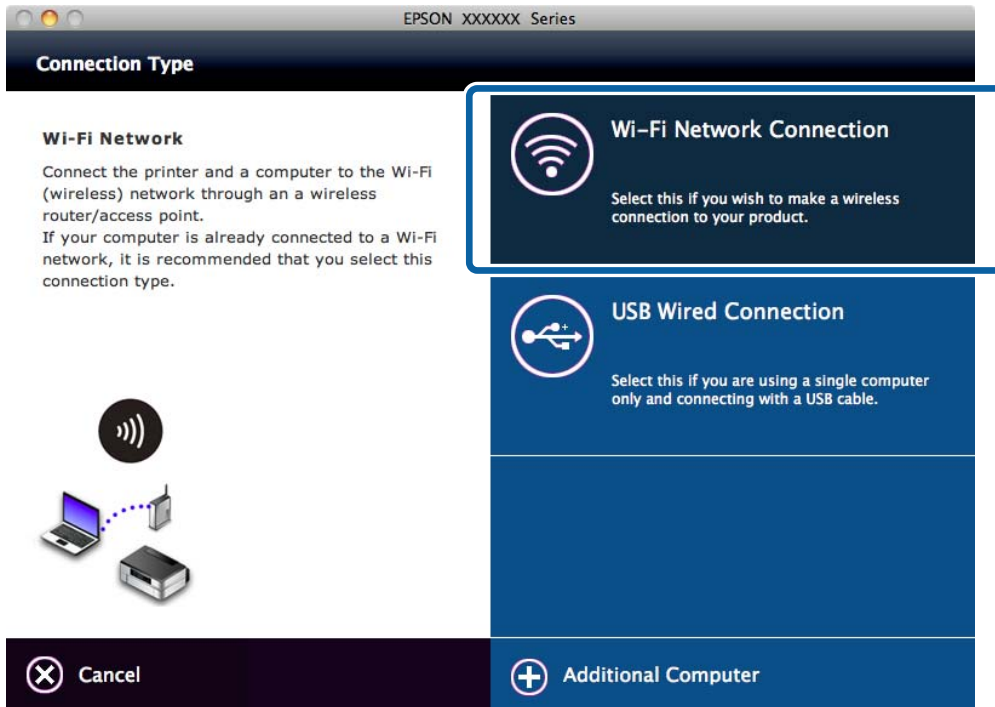
1. Access the following website, and then enter the product's model number.  
<http://epson.sn>
2. Go to **Setup**, and then download the software.
3. Run the software, and then follow the on-screen instructions.
4. Select Wi-Fi on the following screen.

☐ Windows



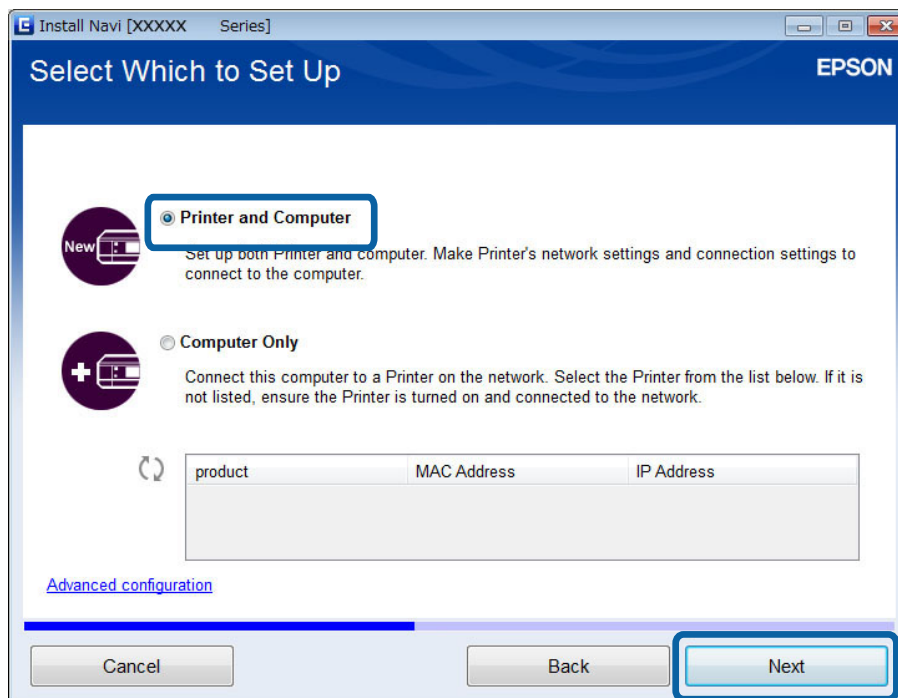
## Connecting the Printer and a Computer

Mac OS X



Follow the on-screen instructions.

5. Select **Printer and Computer** on the Select Which to Set Up screen. (for Windows only)



Follow the on-screen instructions.

## Connecting the Printer and a Computer

### Connecting to Wi-Fi Manually

This method allows you to install essential software by making network settings on the printer's control panel. Set up the following.

#### Connecting the Printer to Wi-Fi

You can set up Wi-Fi from the printer's control panel using one of the following methods.

- Push Button Setup (WPS)
- PIN Code Setup (WPS)

#### Set up Printer Driver

Install the printer driver from the following website.

<http://epson.sn> - Additional Software

#### Related Information

- ➔ “Setting Up Automatically by Pressing a Button (WPS)” on page 33
- ➔ “PIN Code Setup (WPS)” on page 34

### Connecting in Ad Hoc Mode (for Windows Only)

You can connect the printer directly to a computer using Ad Hoc mode.

**Important:**

- The computer's Wi-Fi adapter needs to support Ad Hoc mode.
- Windows 8 and later operating systems do not support Ad Hoc mode.

**Note:**

- If the computer is connected to an access point, we recommend connecting the printer using Wi-Fi.
  - We recommend setting the printer to automatically obtain the IP address. This allows the computer to assign a valid IP address to the printer so that you do not have to obtain an IP address manually.
  - Ad Hoc mode does not provide strong security. The printer is only capable of WEP security.
1. Follow the steps on the computer to set up an Ad Hoc network from your computer.
  2. Insert the software disc supplied with the printer into the computer.
  3. Follow the on-screen instructions.

### Setting up a USB Connection

You can connect the printer to a computer using one of the following methods.

**Important:**

When you install the printer driver, the on-screen instructions show you how to connect a USB cable. Do not connect the USB cable until you are instructed to do so.

## Connecting the Printer and a Computer

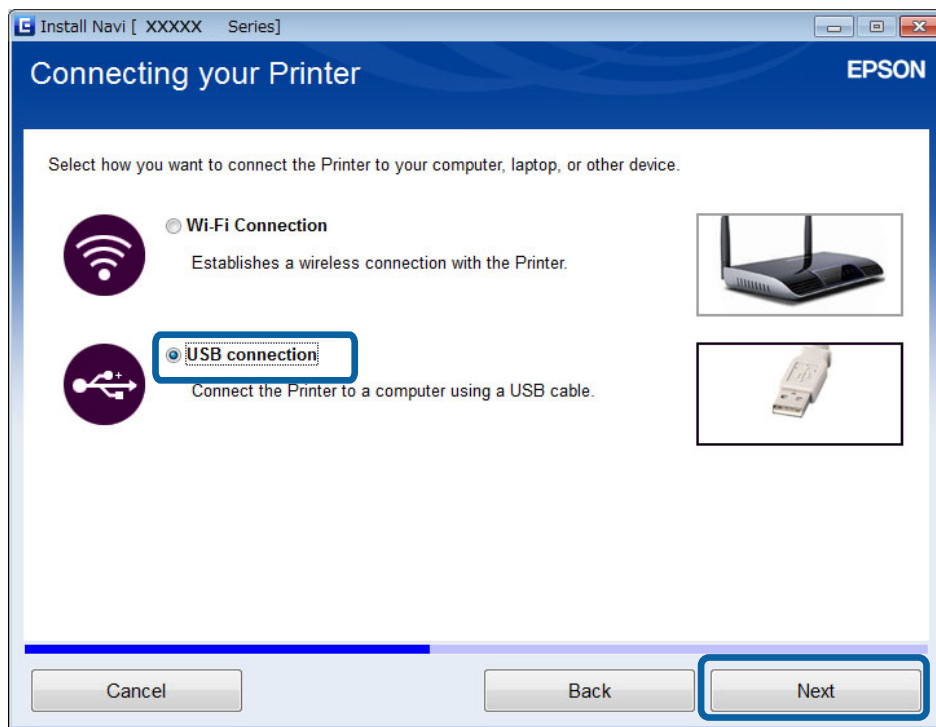
### Related Information

- ➔ “Setting up a USB Connection from the Software Disc (for Windows Only)” on page 20
- ➔ “Setting up a USB Connection from the Website” on page 20
- ➔ “Setting Up a USB Connection Manually” on page 22

## Setting up a USB Connection from the Software Disc (for Windows Only)

This is an automatic connection method for Windows users.

1. Insert the software disc supplied with the printer into the computer.
2. Follow the on-screen instructions.
3. Select **USB connection** on the Connecting your Printer screen.



4. Follow the on-screen instructions.

## Setting up a USB Connection from the Website

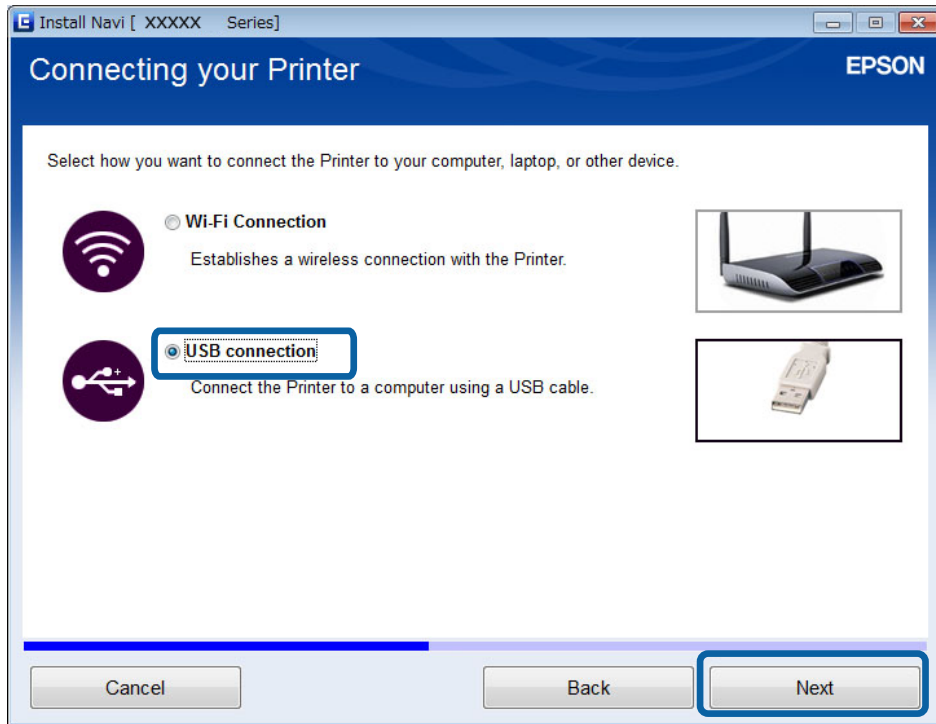
This method is for Mac OS X users or if you cannot use the software disc.

1. Access the following website, and then enter the product's model number.  
<http://epson.sn>
2. Go to **Setup**, and then download the software.
3. Run the software, and then follow the on-screen instructions.

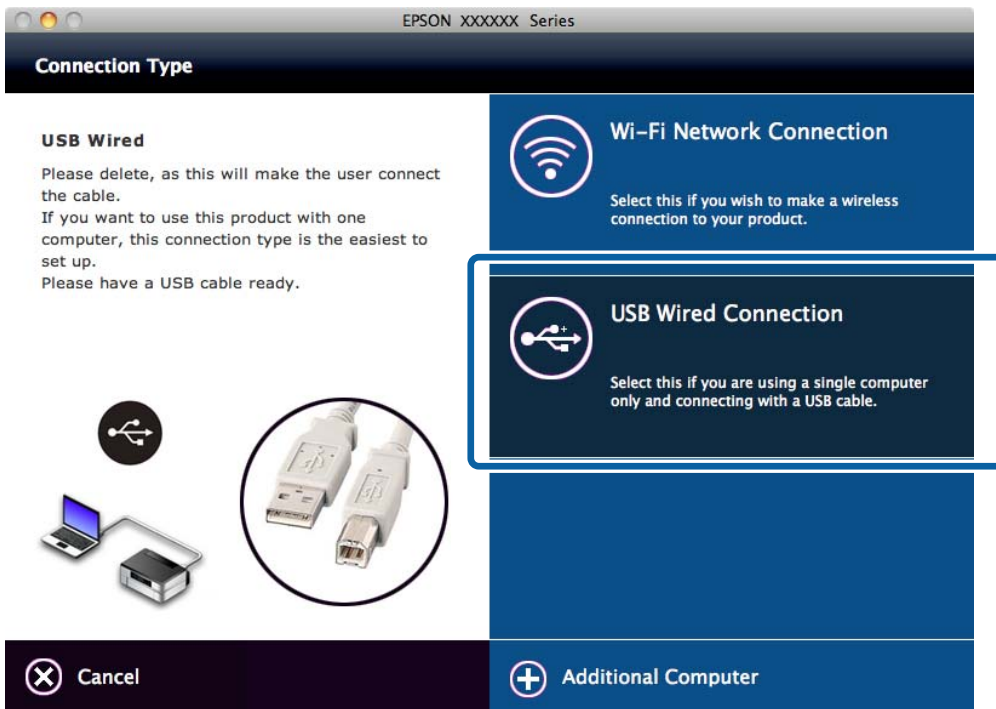
### Connecting the Printer and a Computer

4. Select USB on the following screen.

☐ Windows



☐ Mac OS X



5. Follow the on-screen instructions.

## Connecting the Printer and a Computer

### Setting Up a USB Connection Manually

Set up the following.

#### Set up Printer Driver

Install the printer driver from the following website.

<http://epson.sn> > Additional Software

#### Related Information

➔ “Ports and Protocols” on page 54

---

## Changing a Connection Method Between the Printer and a Computer

You can use a different connection method when changing the network environment or adding another network.

### Replacing or Adding New Access Points

If the SSID changes due to the replacement of an access point, or an access point is added and a new network environment is established, reset the Wi-Fi settings. If the SSID changes, you can use the same setup procedure as [Changing the Printer Connection to Wi-Fi].

#### Related Information

➔ “Connecting to Wi-Fi” on page 15

➔ “Changing the Printer Connection to Wi-Fi” on page 22

### Changing the Printer Connection to Wi-Fi

Follow the steps below to change the connection method to Wi-Fi from USB or Ad Hoc mode.

#### Changing to a Wi-Fi Connection - Windows

1. Connect the computer to the SSID for the access point that you want to connect to.
2. Insert the software disc supplied with the printer into the computer.

**Note:**

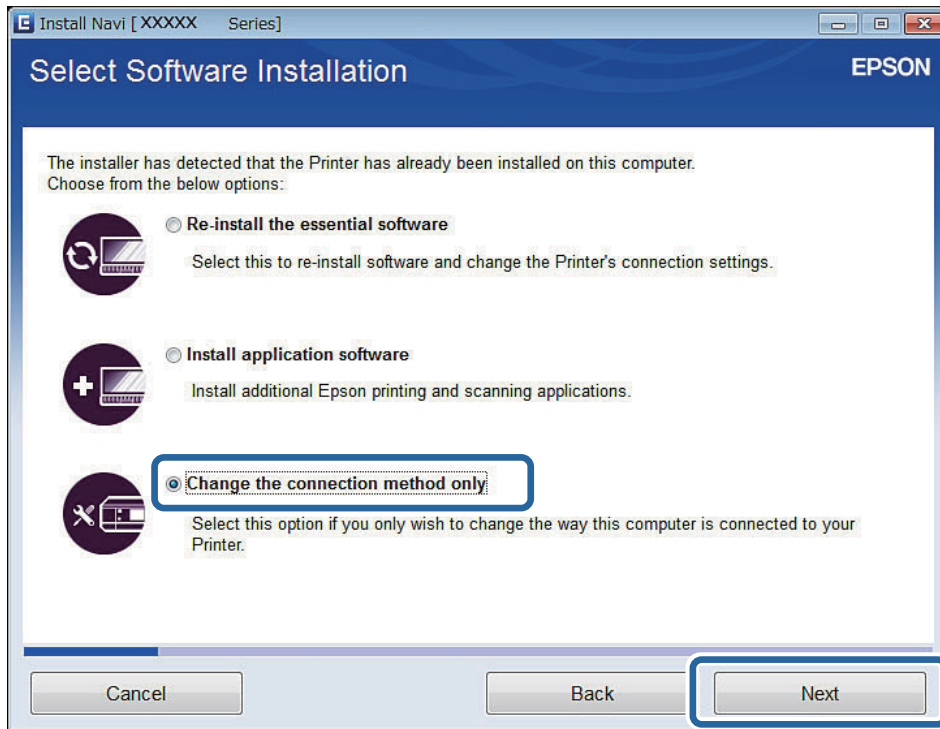
*If you cannot use the software disc, access the following website, and then download the software from **Setup** and make the connection settings. This software operates in the same way as the software disc.*

<http://epson.sn>

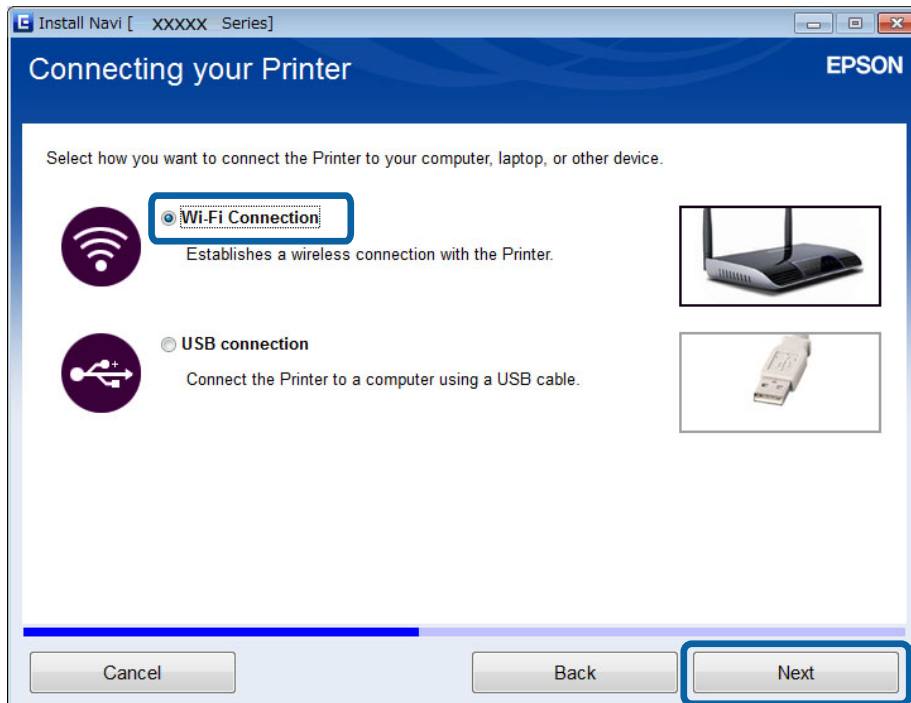
3. Follow the on-screen instructions.

### Connecting the Printer and a Computer

4. Select **Change the connection method only** on the Select Software Installation screen.

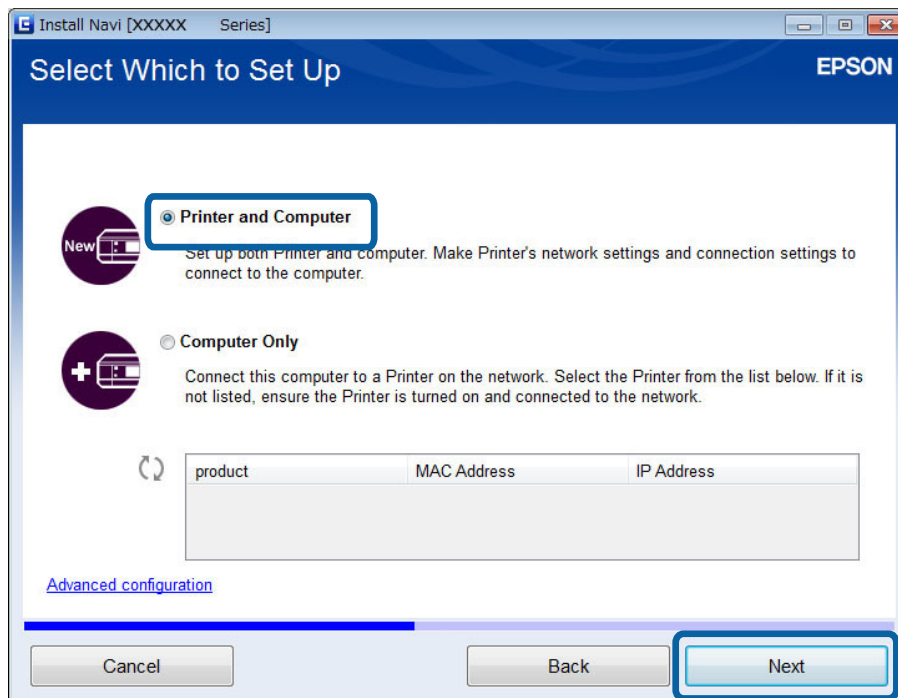


5. Select **Wi-Fi Connection** on the Connecting your Printer screen.



## Connecting the Printer and a Computer

6. Select **Printer and Computer** on the Select Which to Set Up screen.



7. Follow the on-screen instructions.

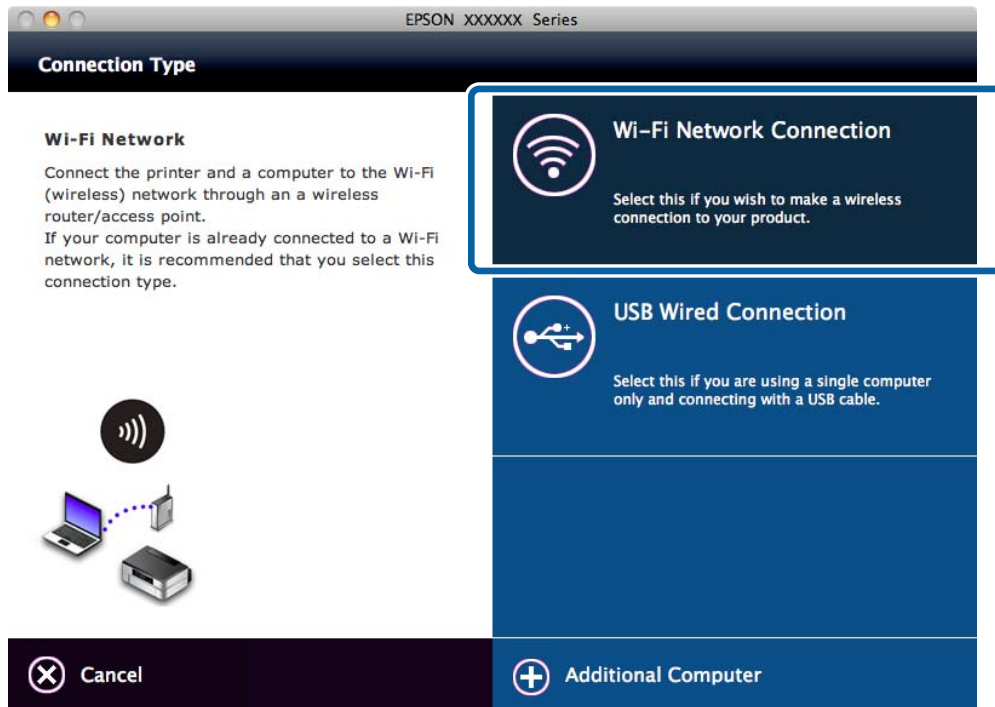
## Changing to a Wi-Fi Connection – Mac OS X

1. Access the following website, and then enter the product's model number.  
<http://epson.sn>
2. Go to **Setup**, and then download the software.
3. Run the software, and then follow the on-screen instructions.



## Connecting the Printer and a Computer

4. Select **Wi-Fi Network Connection** on the Connection Type screen.



5. Follow the on-screen instructions.

## Adding a USB Connection to the Printer

You can connect the printer and a computer with a USB cable when the printer is connected to Wi-Fi. You can add a USB connection even when the printer is on a network.

### Adding a USB Connection - Windows

1. Insert the software disc supplied with the printer into the computer.

**Note:**

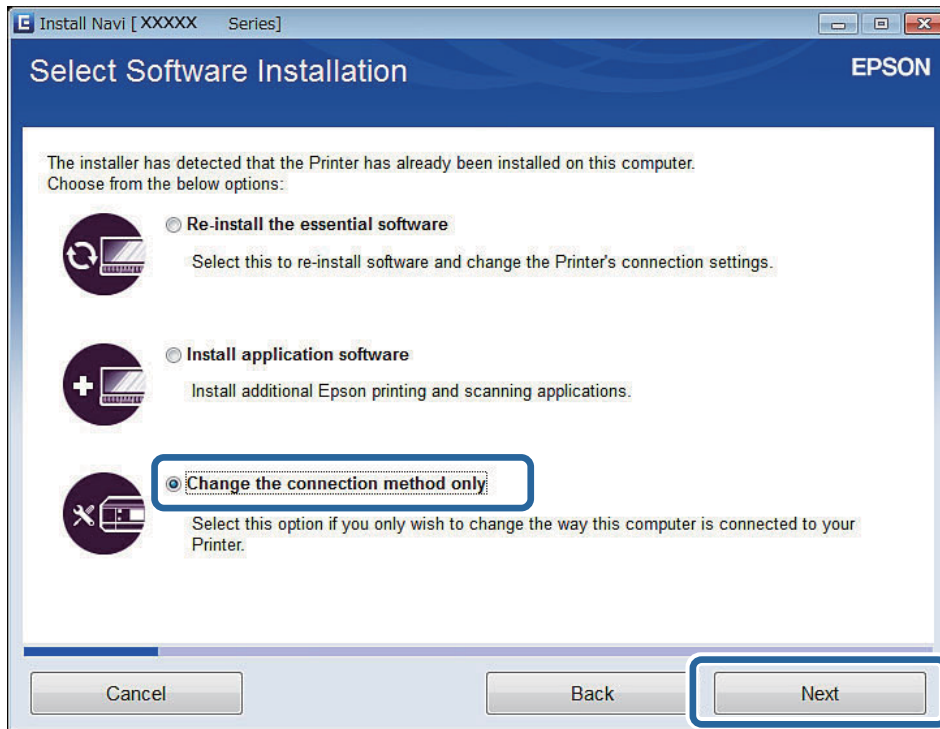
*If you cannot use the software disc, access the following website, and then download the software and make the connection settings. This software operates in the same way as the software disc.*

<http://epson.sn>

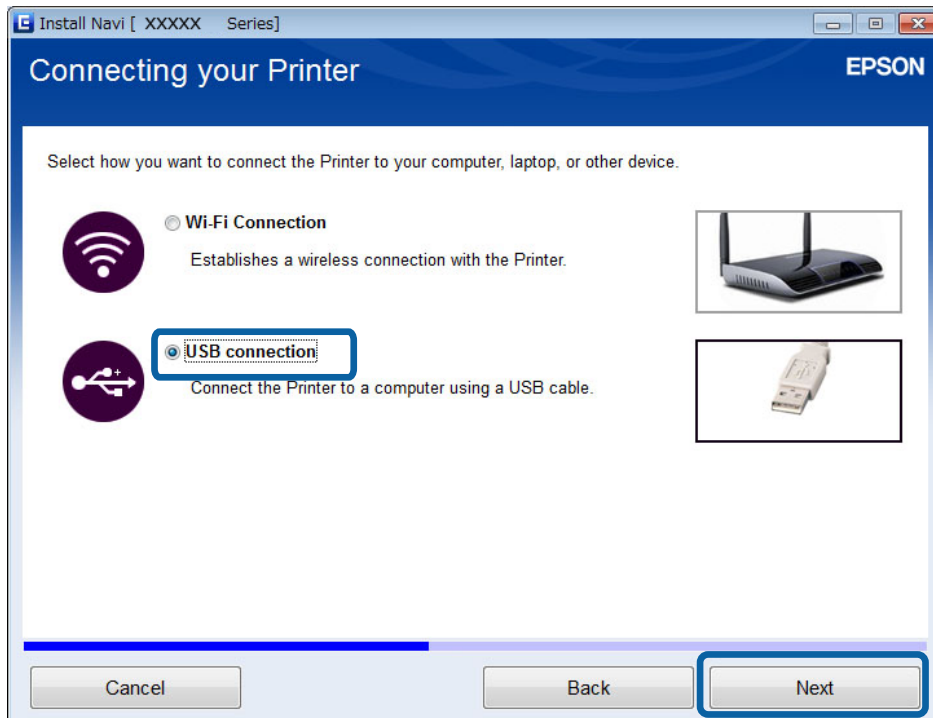
2. Follow the on-screen instructions.

## Connecting the Printer and a Computer

3. Select **Change the connection method only** on the Select Software Installation screen.



4. Select **USB connection** on the Connecting your Printer screen.



5. Follow the on-screen instructions.

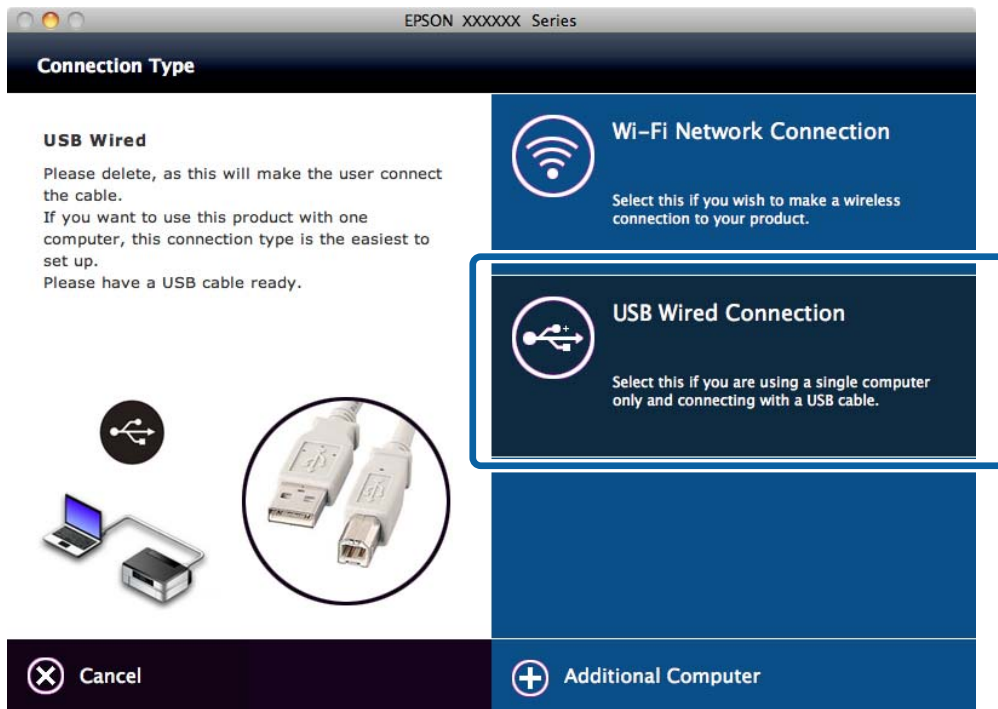
### Related Information

➔ “Combinations that can be Connected at the Same Time” on page 54

## Connecting the Printer and a Computer

### Adding a USB Connection - Mac OS X

1. Access the following website, and then enter the product's model number.  
<http://epson.sn>
2. Go to **Setup**, and then download the software.
3. Run the software, and then follow the on-screen instructions.
4. Select **USB Wired Connection** on the Connection Type screen.



5. Follow the on-screen instructions.

#### Related Information

➔ [“Combinations that can be Connected at the Same Time” on page 54](#)

---

## Adding Computers

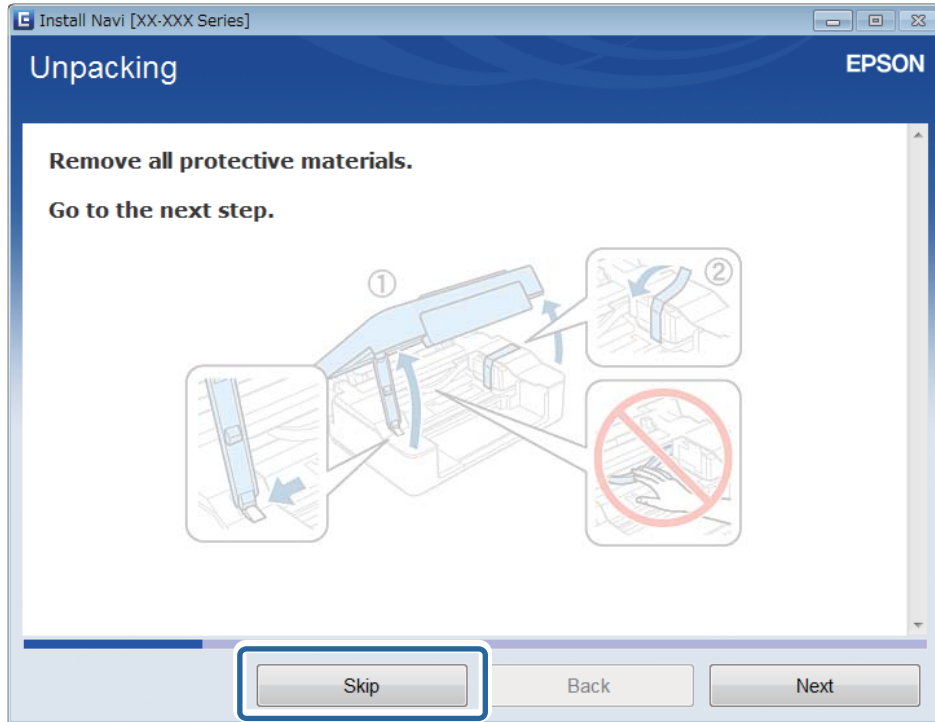
You can set up the printer as a network printer that can be used from another computer.

### Adding Computers Using the Software Disc (for Windows Only)

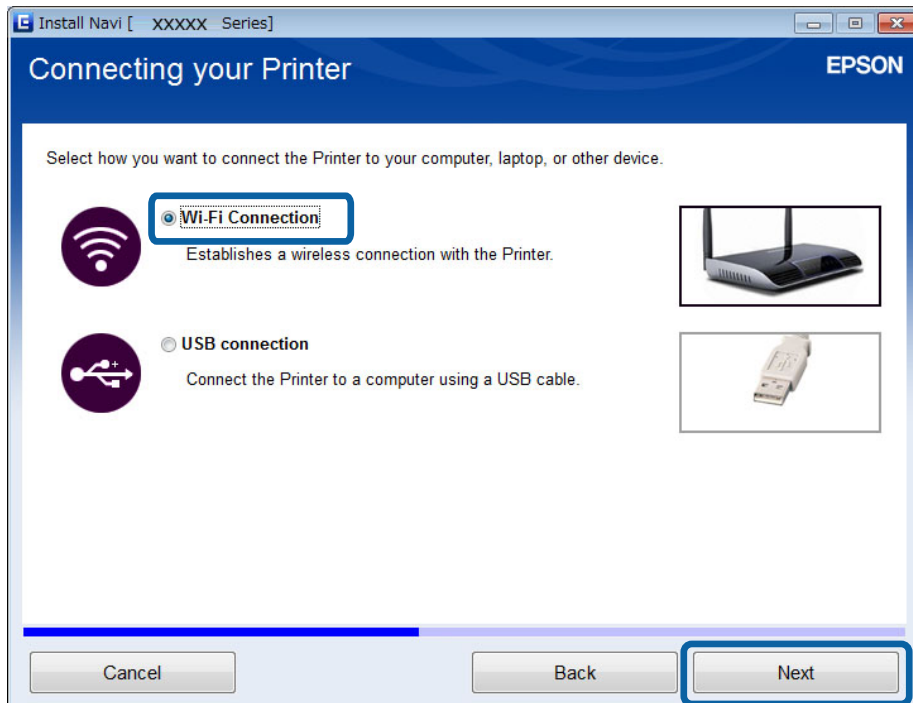
1. Insert the software disc supplied with the printer into the computer you want to add.  
Follow the on-screen instructions until the screen in step 2 is displayed.

## Connecting the Printer and a Computer

- When the printer's setup instructions screen is displayed, select **Skip**.



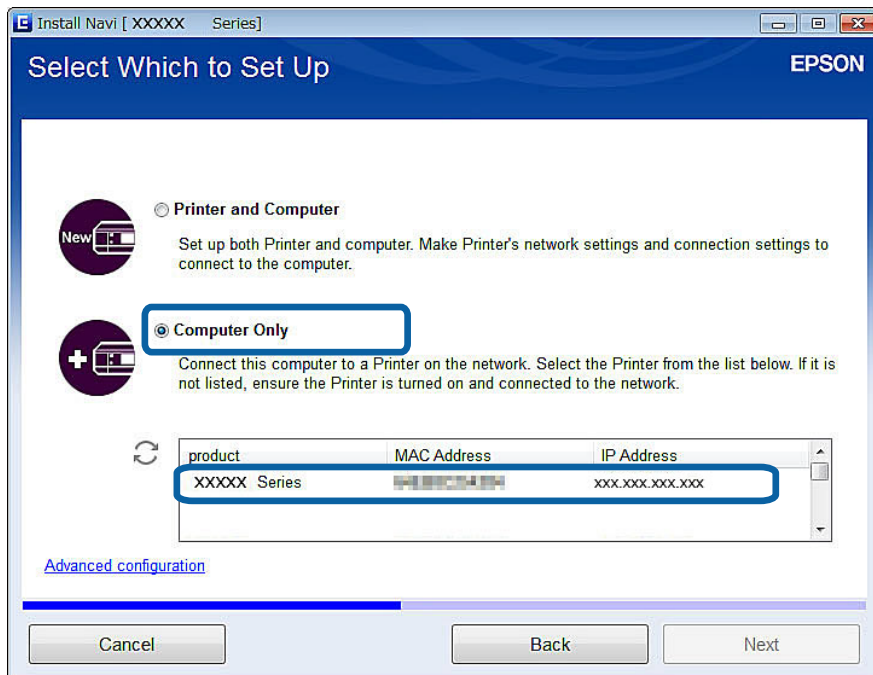
- Select **Wi-Fi Connection** on the Connecting your Printer screen.



**Note:**  
Select the connection according to your printer's connection setup.

## Connecting the Printer and a Computer

4. Select **Computer Only** on the Select Which to Set Up screen, and then select the printer you want to connect to from the list.



5. Follow the on-screen instructions.

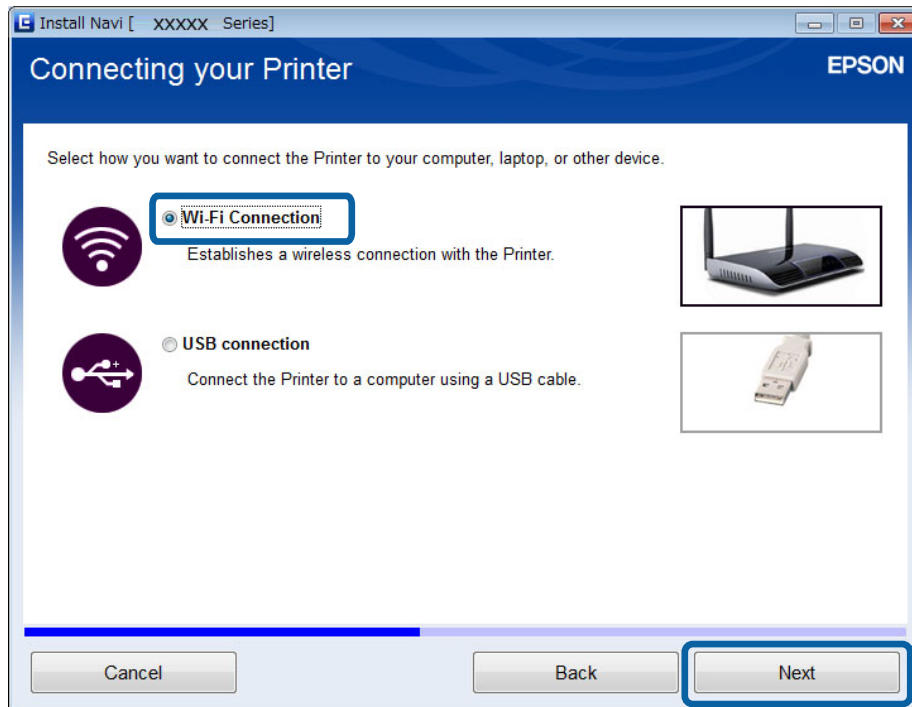
## Adding Computers from the Website - Windows

Download the software from the website, and then make connection settings for adding a computer.

1. Access the following website from the computer you want to add, and then enter the product's model number.  
<http://epson.sn>
2. Go to **Setup**, and then download the software.
3. Run the software, and then follow the on-screen instructions.  
Follow the on-screen instructions until the screen of step 4 is displayed.

## Connecting the Printer and a Computer

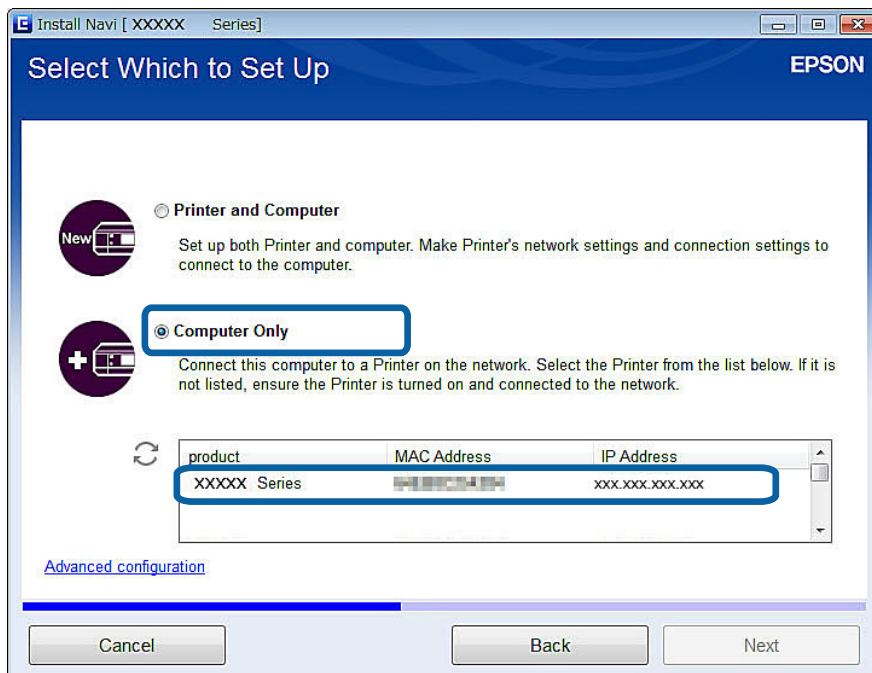
4. Select **Wi-Fi Connection** on the Connecting your Printer screen.



**Note:**

Select the connection according to your printer's connection setup.

5. Select **Computer Only** on the Select Which to Set Up screen, and then select the printer you want to connect to from the list.



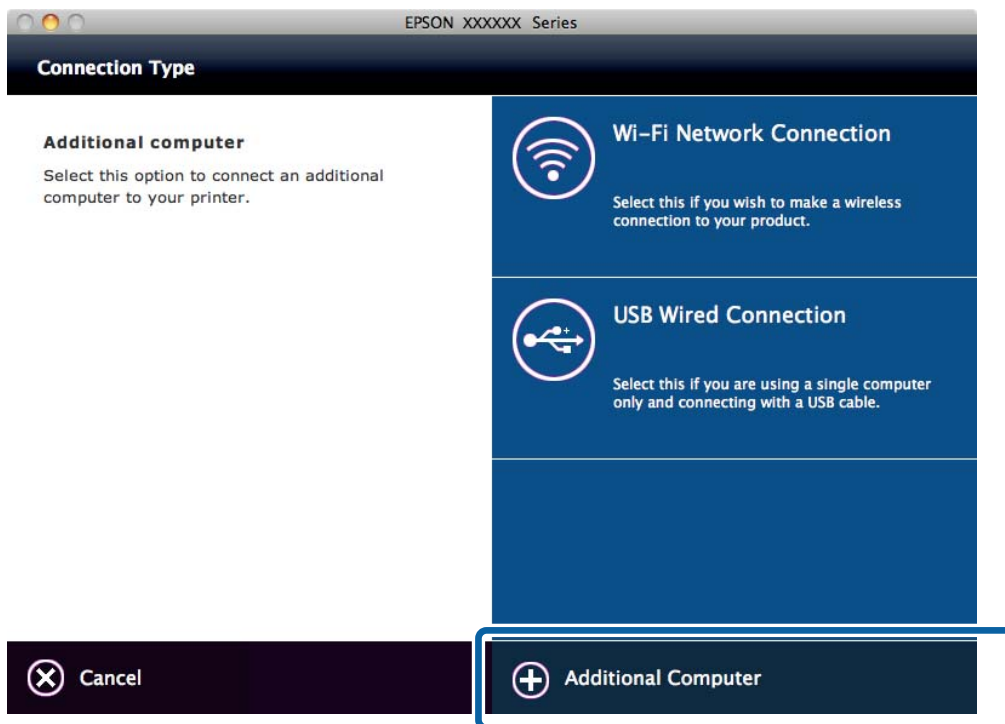
6. Follow the on-screen instructions.

## Connecting the Printer and a Computer

### Adding Computers from the Website - Mac OS X

Download the software from the website, and then make connection settings for adding a computer.

1. Access the following website from the computer you want to add, and then enter the product's model number.  
<http://epson.sn>
2. Go to **Setup**, and then download the software.
3. Run the software, and then follow the on-screen instructions.
4. Select **Additional Computer** on the Connection Type screen.



5. Follow the on-screen instructions.

### Adding Computers Manually - Windows

Set up the following.

- Connect the computer to the same network (SSID) as the printer.
- Install the printer driver from the following website.  
<http://epson.sn> > **Additional Software**

### Adding Computers Manually - Mac OS X

Set up the following.

- Connect the computer to the same network (SSID) as the printer.

## Connecting the Printer and a Computer

- ❑ Add the printer from the following website.

<http://epson.sn> > **Support**



# Making Wi-Fi Network Settings from the Printer's Control Panel

## Related Information

- ➔ [“Setting Up Automatically by Pressing a Button \(WPS\)” on page 33](#)
- ➔ [“PIN Code Setup \(WPS\)” on page 34](#)
- ➔ [“Adding Computers” on page 27](#)

---

## Setting Up Automatically by Pressing a Button (WPS)

You can automatically set up a Wi-Fi network by pressing a button on the access point. If the following conditions are met, you can set up by using this method.

- The access point is compatible with WPS (Wi-Fi Protected Setup).
- The current Wi-Fi connection was established by pressing a button on the access point.


### Note:


If you cannot find the button or you are setting up using the software, see the documentation provided with the access point.

1. Hold down the [WPS] button on the access point until the security light flashes.



If you do not know where the [WPS] button is, or there are no buttons on the access point, see the documentation provided with your access point for details.



2. Press Wi-Fi button on the printer until the Wi-Fi light and the  light alternately blink (Approximately 3 seconds).

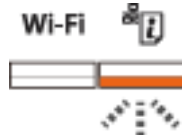
The connection setting will start. Wi-Fi light and the  light will simultaneously light up when the connection is established.



## Making Wi-Fi Network Settings from the Printer's Control Panel

### Note:

The printer is in a connection error status when the Wi-Fi light is off and the  light is blinking. After clearing the printer error by pressing the  button for 3 seconds, reboot the access point, place it close to the printer and try again. If still not working, check the [Solving Problems] in this manual.



To connect a smart device, use Epson iPrint to configure the printer.

To connect a computer, make connection settings for adding a computer.


### Related Information

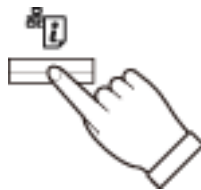
- ➔ [“Preparing an Application and Wi-Fi Connection from a Smart Device” on page 10](#)
- ➔ [“Adding Computers” on page 27](#)

---



## PIN Code Setup (WPS)

You can automatically connect to an access point by using a PIN code that is printed on the network status sheet. You can use this method to set up if an access point is capable of WPS (Wi-Fi Protected Setup). Use a computer to enter a PIN code into the access point.

1. Load A4 size paper.
2. Press the  button on the printer's control panel.




The network status sheet is printed.

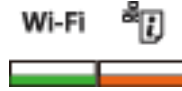
3. While holding down the Wi-Fi button, press the  button for more than 3 seconds until the Wi-Fi light and the  light simultaneously blink.





### Making Wi-Fi Network Settings from the Printer's Control Panel

4. Use your computer to enter the PIN code (an eight digit number) printed on [WPS-PIN Code] column of the network status sheet into the access point within two minutes.

Wi-Fi light and the  light will simultaneously light up when the connection is established.



**Note:**

- ❑ See the documentation provided with your access point for details on entering a PIN code.
- ❑ The printer is in a connection error status when the Wi-Fi light is off and the  light is blinking. After dissolve the printer error by pressing the  button for 3 seconds, reboot the access point, place it close to the printer and try again. If still not working, check the [Solving Problems] in this manual.



To connect a smart device, use Epson iPrint to configure the printer.

To connect a computer, make connection settings for adding a computer.



**Related Information**

- ➔ [“Preparing an Application and Wi-Fi Connection from a Smart Device” on page 10](#)
- ➔ [“Adding Computers” on page 27](#)
- ➔ [“Solving Problems” on page 39](#)

# Checking the Printer's Network Connection Status


## Network Lamp

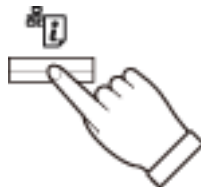
You can check the network connection status using the network lamp on the printer's control panel.

Lamp	Description
	Network is not set up.
	Wi-Fi is enabled.

## Printing a Network Status Sheet

The network status sheet is printed on A4-size plain paper.

1. Load paper.
2. Press the  button.



The network status sheet is printed.

# Advanced Network Settings

---

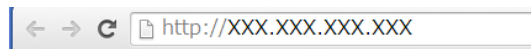
## Setting Up from Web Config

To use Web Config, printers and devices must have an IP address and be connected to the same network.

1. Check the printer's IP address.

You can check this from the [IP Address] column of a network status sheet.

2. Enter the printer's IP address into a browser to run Web Config.



3. Select **Network Settings**.

**Note:**

*If the menu is not displayed, change the page to **Advanced Settings** from the top of the screen.*




4. You can change the network basic settings and Wi-Fi settings.

# Disconnecting or Initializing the Network

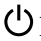
---

## Initializing the Network Settings from the Printer's Control Panel

You can restore all network settings to their defaults.

1. Turn the printer off.
2. While holding down the  button, press the  button until the Wi-Fi light and the  light flash simultaneously.



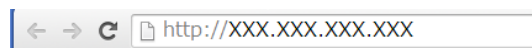
Initialization is complete when only the  light is on.

---

## Disabling Wi-Fi from Web Config

To use Web Config, printers and devices must have an IP address and be connected to the same network.

1. Check the printer's IP address.  
You can check this from the [IP Address] column of a network status sheet.
2. Enter the printer's IP address into a browser to run Web Config.



3. Select **Network Settings** > **Wi-Fi**, and then select **Disable Wi-Fi**.

**Note:**

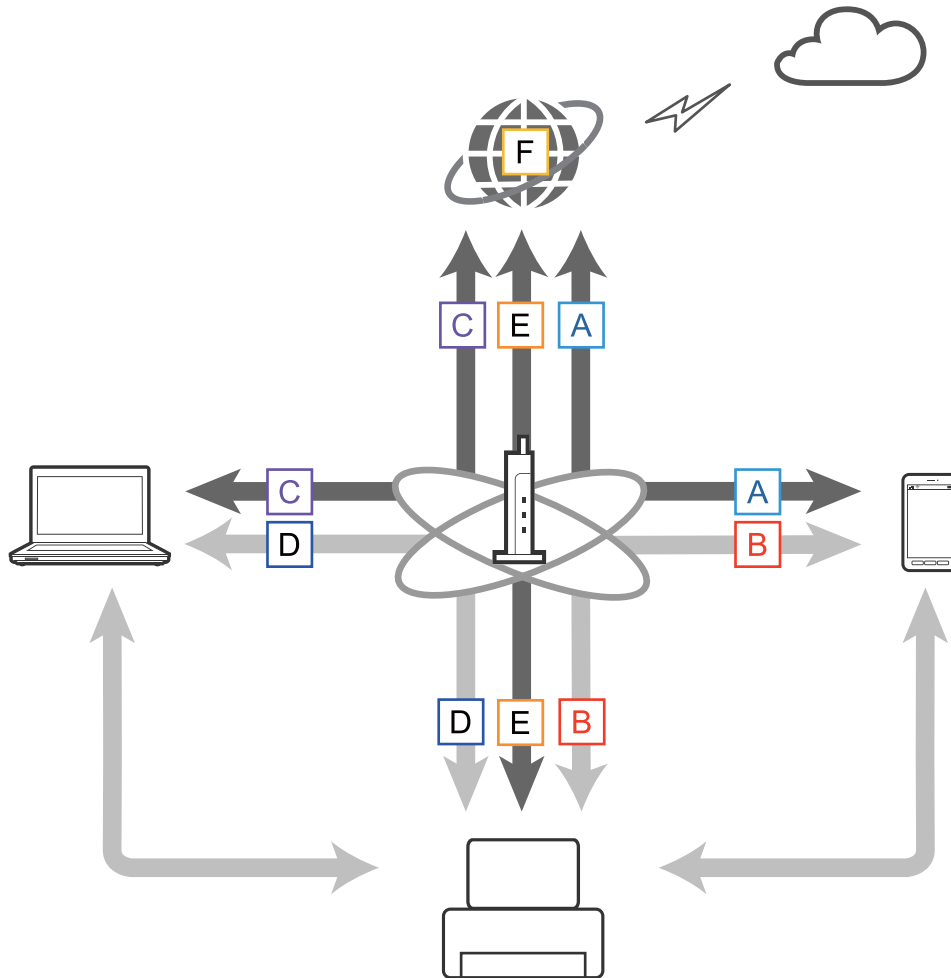
*If the menu is not displayed, change the page to **Advanced Settings** from the top of the screen.*

4. Check the message, and then select **OK**.

# Solving Problems

## Cannot Connect by Wi-Fi

Examine your current situation and then check the solutions. The illustrations may vary by model.



### Related Information

- ➔ “A: Cannot Connect to the Internet from a Smart Device” on page 39
- ➔ “B: Cannot Print with Wi-Fi from a Smart Device” on page 40
- ➔ “C: Cannot Connect to the Internet from a Computer” on page 40
- ➔ “D: Cannot Print with Wi-Fi from a Computer” on page 43
- ➔ “E: Cannot Update the Firmware” on page 44
- ➔ “F: The Internet Disconnects when no Changes were made to the Network Environment” on page 44

### A: Cannot Connect to the Internet from a Smart Device

- Restart the access point (consider other users who may be using the network).

## Solving Problems

- ❑ Check the status of the access point to make sure it is working correctly. See the documentation provided with the access point for details.
- ❑ If the smart device cannot receive signals sufficiently from the access point, move them closer together. If interference occurs, move them away from other electromagnetic wave equipment or radio equipment.
- ❑ You can check the strength of the radio wave from the [Wireless] column on the network status sheet. If the [Signal Strength] is [Fair], the strength of the radio wave may be weak.
- ❑ If there is an IP address conflict, the network connection may become unstable or unavailable. Assign a unique IP address to each network device.
- ❑ You can check the printer's IP address from the [IP address] column of a network status sheet.
- ❑ You may not be able to connect to a network that is receiving connections from too many devices. Reduce the number of devices on the network by turning off the unused devices and so on.
- ❑ If the access point is set to hide the SSID, enter the SSID and password directly.

### Related Information

- ➔ [“Printing a Network Status Sheet” on page 36](#)
- ➔ [“Advanced Network Settings” on page 37](#)

## B: Cannot Print with Wi-Fi from a Smart Device

- ❑ Check that the access point's access light is flashing.
- ❑ If a privacy separator on the access point is enabled, you cannot make network settings for the printer. Disable the privacy separator, and then try again. See the documentation provided with the access point for details.
- ❑ If the access point is set to hide the SSID, enter the SSID and password directly.
- ❑ Check if the password is correct. The password is case sensitive.
- ❑ Make sure that the printer is correctly connected to the network.
- ❑ Check if the printer is turned off. If you have set the power off timer on the printer, the printer turns off automatically after a certain period of time.
- ❑ Check if the network environment has been changed. If you have changed the access point, make network settings again and connect the smart device and printer to the same network.
- ❑ You can check the network that the printer is connected to from the [SSID] column on the network status sheet.

### Related Information

- ➔ [“Printing a Network Status Sheet” on page 36](#)

## C: Cannot Connect to the Internet from a Computer

- ❑ Restart the access point (consider other users who may be using the network).
- ❑ Check the status of the access point to make sure it is working correctly. See the documentation provided with the access point for details.
- ❑ If the computer cannot receive signals from the access point, move them closer together. If interference occurs, move them away from other electromagnetic wave equipment or radio equipment.
- ❑ You can check the strength of the radio wave from the [Wireless] column of a network status sheet. The strength of the radio wave may weak if the [Signal Strength] is [Fair].





## Solving Problems

- You may not be able to connect to a network that is receiving connections from too many devices. Reduce the number of devices on the network by turning off the unused devices and so on.
- If there is an IP address conflict, the network connection may become unstable or unavailable. Assign a unique IP address to each network device.
- You cannot connect to the network if multiple network adapters are enabled. Disable unused network adapters.
- You can check the printer's IP address from the [IP address] column of a network status sheet.
- If wireless channels between the computer and the access point do not match, they cannot connect to each other.
- Available wireless channels may be restricted on computers that have a Wi-Fi adapter. Check that the computer has the wireless channel that is set on the access point.
- If the access point is set to hide the SSID, enter the SSID and password directly.
- For Windows, you may not be able to connect to the network when a network bridge is created. Delete the network bridge.

### Related Information

- ➔ [“Printing a Network Status Sheet” on page 36](#)
- ➔ [“Advanced Network Settings” on page 37](#)

## Setting the Network Priority - Mac OS X

1. Select  > **System preferences** > **Network**.
2. Click , and then select **Set Service Order**.
3. Drag the service for which you want to increase the priority to the top of the list.
4. Click **OK**.
5. Click **Apply** to close the screen.

## Checking the Status Using the Network Icon - Windows

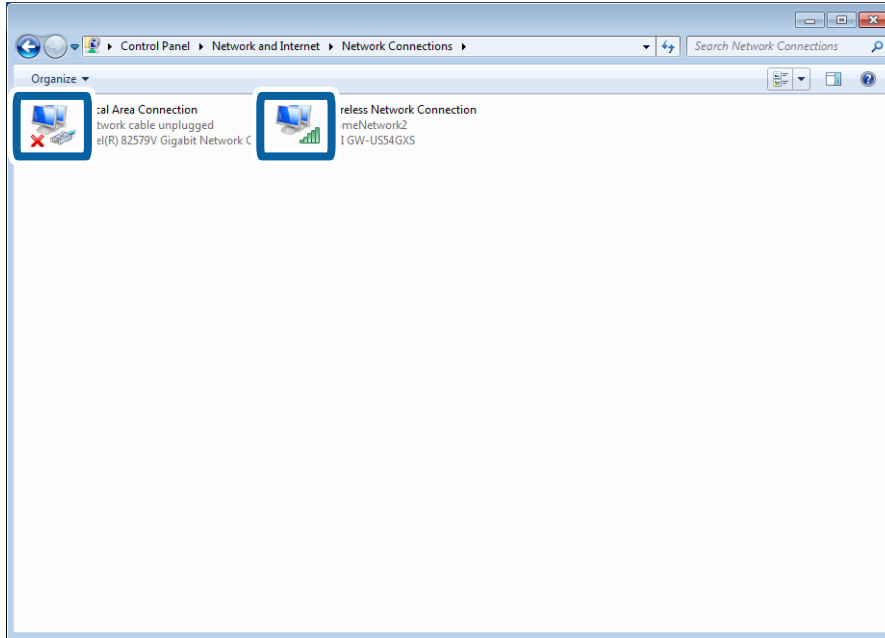
Check if the computer's network is enabled. Display the network connection screen on the computer you want to connect to the network, and then check the network connection icon.

- Windows 8.1/Windows 8  
**Desktop > Settings > Control Panel > Network and Internet > View network status and tasks > Change adapter settings.**
- Windows 7  
Click the start button, and then select **Control Panel > View network status and tasks > Change adapter settings.**
- Windows Vista  
Click the start button, and then select **Control Panel > View network status and tasks > Manage network connections.**

## Solving Problems

### Windows XP

Click the start button, and then select **Control Panel > Network and Internet Connections > Network Connections**.




For Windows Vista or later	Windows XP	Descriptions
		The computer is connected to the network device by Wi-Fi.
		The computer's Wi-Fi adapter is recognized, but it is not working correctly.
No Icons	No Icons	The network adapter cannot be recognized. Connect the computer and the printer directly using a USB cable, or make connection settings after preparing the required devices for network connection.

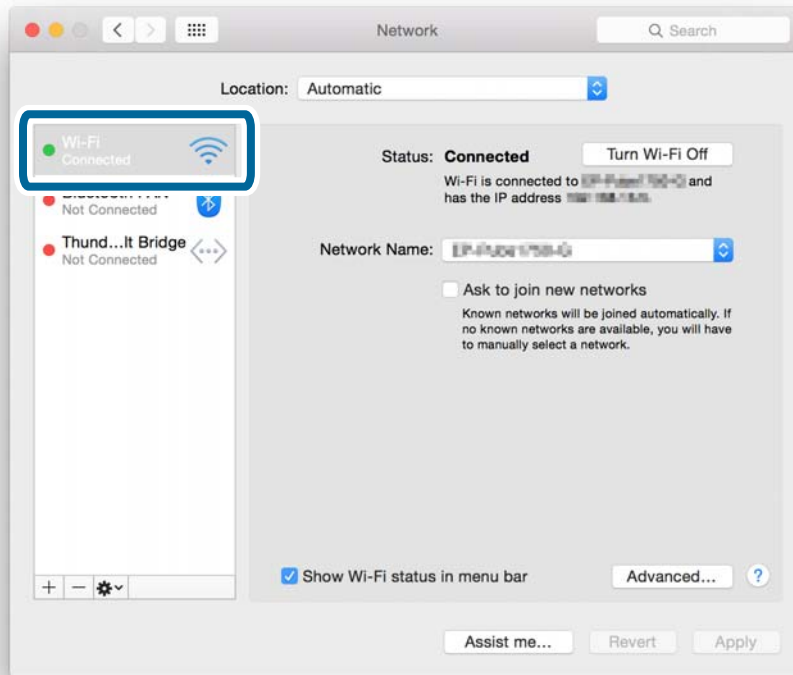
### Related Information

➔ [“Checking the Connection Using a Ping Command - Windows” on page 44](#)

## Solving Problems

### Checking the Status Using the Network Light - Mac OS X

Check if the computer's network is enabled. Select  > **System preferences** > **Network** on the computer that you want to connect to the network, and then check the connection status on the network screen.



Service name	Light color	Descriptions
Wi-Fi (or AirPort)	Green	The computer is connected to a network device by Wi-Fi.
	Red or orange	The computer's Wi-Fi adapter is recognized, but it is not working correctly.
Nothing	–	The network adapter cannot be recognized. Connect the computer and the printer directly using a USB cable, or make connection settings after preparing the required devices for network connection.

#### Related Information

➔ [“Checking the Connection Using a Ping Command - Mac OS X” on page 45](#)

## D: Cannot Print with Wi-Fi from a Computer

### Cannot Print

- Check if the printer is turned off. If you have set the power off timer on the printer, the printer turns off automatically after a certain period of time.
- Check that the access point's access light is flashing.

## Solving Problems

- ❑ Use a Ping command to make sure the printer and computer are connected.
- ❑ If the printer port is wrong, you cannot print or printing might stop. Check that print port is set up and selected correctly.
- ❑ Check if the network environment has been changed. If you change the access point, make network setting again and connect the computer and printer to the same network.
- ❑ You can check the network that the printer is connected from [SSID] column of a network status sheet.
- ❑ If the printer is not displayed on the add printer screen when using Mac OS X and using Wi-Fi networks, the network priority between the printer and the device may be low. Increase the network priority.

### Related Information

- ➔ [“E: Cannot Update the Firmware” on page 44](#)
- ➔ [“Checking the Connection Using a Ping Command - Windows” on page 44](#)
- ➔ [“Checking the Connection Using a Ping Command - Mac OS X” on page 45](#)
- ➔ [“Checking the Print Port” on page 59](#)
- ➔ [“Printing a Network Status Sheet” on page 36](#)

## E: Cannot Update the Firmware

- ❑ Initialize all of the printer's network settings, and then set up the network again.
- ❑ Restart network devices such as an access point or printer (consider other users who may be using the network).
- ❑ Check the latest firmware update release for the printer or access point. If the latest version has been released, update your device.

### Note:

*If you changed the network settings for the printer or the access point, the changes are applied after approximately 30 seconds to one minute.*

## F: The Internet Disconnects when no Changes were made to the Network Environment

If you are suddenly unable to connect to the Internet when no network changes have been made, there may be a problem with the server or a temporary problem. If you are still unable to connect after waiting for a while, contact your Internet provider.

---

## Checking the Connection Using a Ping Command

### Checking the Connection Using a Ping Command - Windows

1. Check the printer's IP address for the connection that you want to check.  
You can check this from the [IP Address] column of a network status sheet.
2. Display the computer's command prompt screen.
  - ❑ Windows 8.1/Windows 8  
Display the application screen, and then select **Command Prompt**.

## Solving Problems

- ❑ Windows 7 or earlier

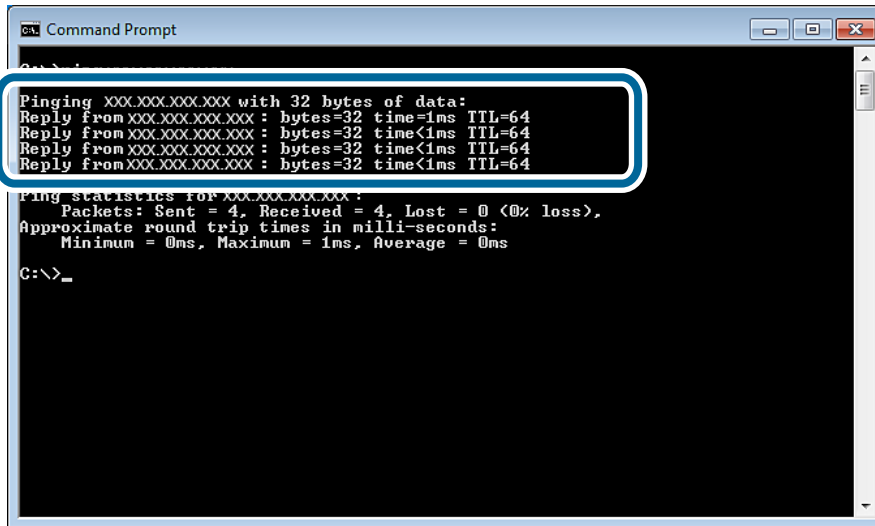
Click the start button, select **All Programs** or **Programs > Accessories > Command Prompt**.

3. Enter 'ping xxx.xxx.xxx.xxx', and then press the Enter key.

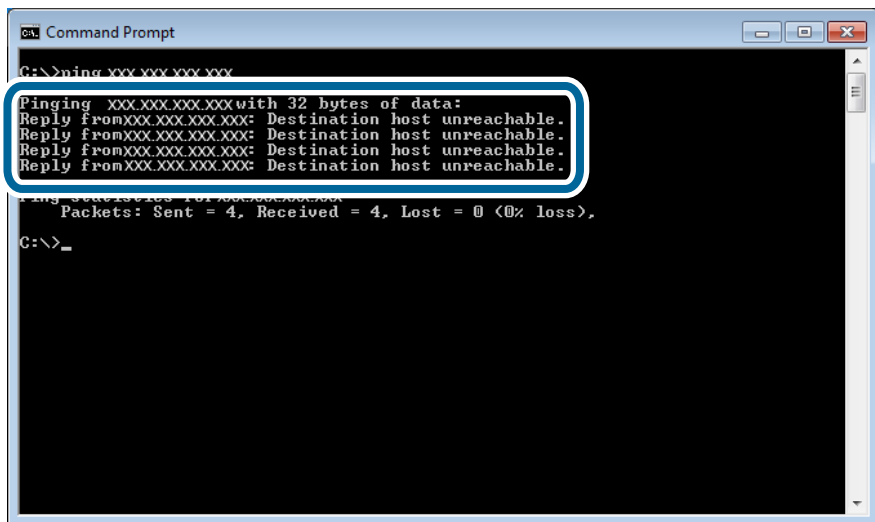
Enter the printer's IP address for xxx.xxx.xxx.xxx.

4. Check the communication status.

If the printer and the computer are communicating, the following message is displayed.



If the printer and the computer are not communicating, the following message is displayed.

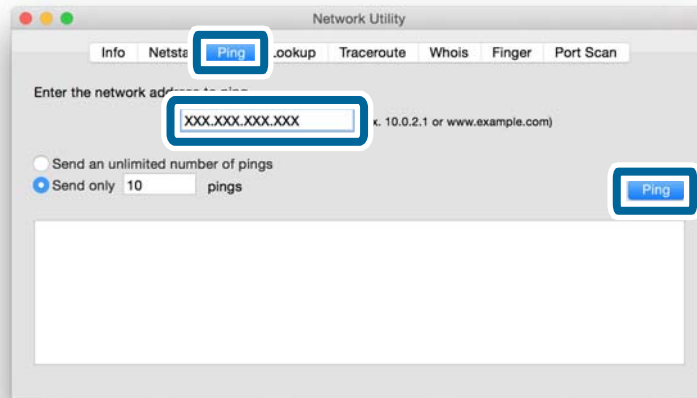


## Checking the Connection Using a Ping Command - Mac OS X

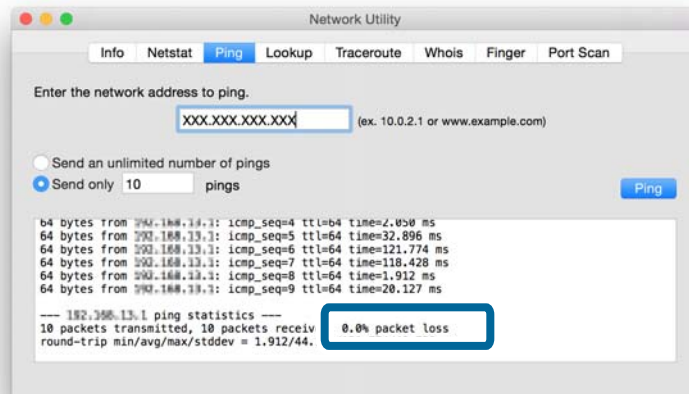
1. Check the printer's IP address for the connection that you want to check.  
You can check this from the [IP Address] column of a network status sheet.
2. Run Network Utility.  
Enter "Network Utility" in **Spotlight**.

### Solving Problems

3. Click the **Ping** tab, enter the IP address that you checked in step 1, and then click **Ping**.

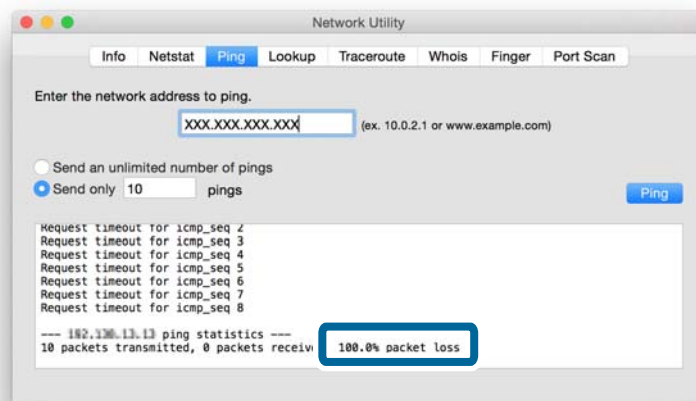


4. Check the communication status.  
If the printer and the computer are communicating, the following message is displayed.



## Solving Problems

If the printer and the computer are not communicating, the following message is displayed.



# Appendix

---

## Basic Network Information Used by the Printer

### Type of Network Used by the Printer

Your printer is able to use the following networks. See the documentation supplied with your printer to check which networks apply to your printer.

#### Networks with a Relay Point

Networks with a relay point such as a hub or access point that communicate with the printer through the relay point.

- Ethernet
- Wi-Fi

#### Networks Without a Relay Point

Networks without a relay point that allow the device to communicate directly with the printer.

- Wi-Fi Direct: Simple AP Mode
- Wi-Fi Direct: Wi-Fi Direct Mode
- Wi-Fi Ad Hoc Mode

### Summary of Networks with a Relay Point

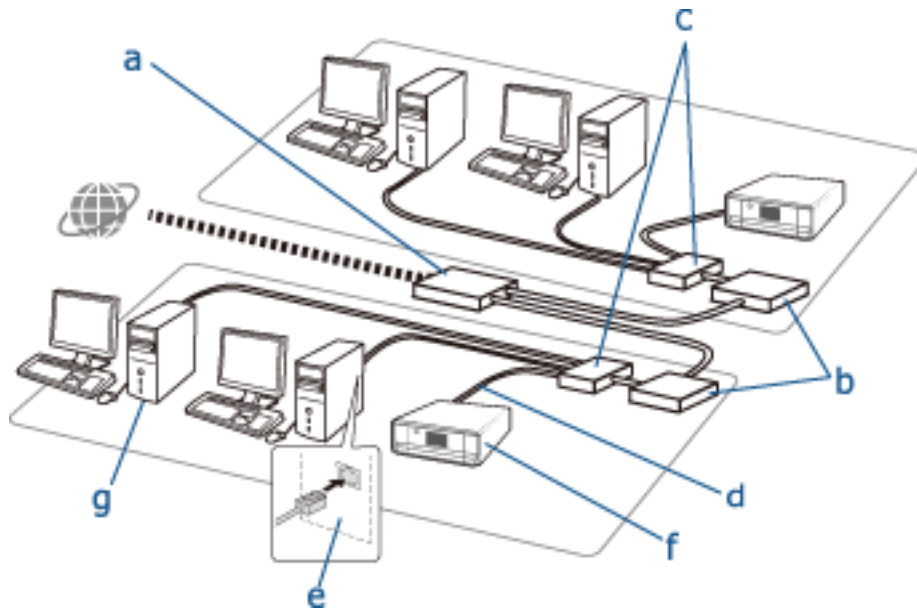
#### Networks Using Cables (Ethernet)

Networks that are established by using a hub and cable are called Ethernet networks.



**Appendix**

**Devices Used to Configure Ethernet Connections**



The following is a list of the devices shown in the figure above.

- (a) Modem
- (b) Router
- (c) Hub
- (d) Ethernet Cable
- (e) Network Interface
- (f) Printer
- (g) Computer

The following explains the functions of the devices.

<p>(a) Modem or Optical Network Unit</p>	<p>Connects home or office networks to an external network (Internet) with a line through a computer or router. The computer or router cannot receive signals themselves without converting the information.</p> <p>There are two types of devices used to convert information depending on the signal.</p> <ul style="list-style-type: none"> <li><input type="checkbox"/> Modem: Converts an analog signal sent from an analog line such as a telephone line into a digital signal, or vice versa.</li> <li><input type="checkbox"/> Optical Network Unit: Converts an optical signal into electrical signal, or vice versa and is installed on the user's side of the network.</li> </ul>
<p>(b) Router</p>	<p>The router is the doorway to the network. They act as a relay point between devices and external signals. If the router is able to connect to the Internet, devices connected to the router are also able to connect to the Internet.</p> <p>Since the router is the doorway to the network, each router can be defined as an individual unit of the network. This individual unit is known as a "Segment".</p>
<p>(c) Hub</p>	<p>Routers cannot connect directly to a large number of devices. You can use a hub and Ethernet cable (d) to connect several devices such as printers and computers to the router. Some products are a combination of a hub and router.</p>

**Appendix**

(d) Ethernet Cable	<p>An Ethernet cable is used to connect a hub and devices like Network Interface devices.</p> <p>You can use UTP (Unshielded Twist Pair) and STP (Shielded Twist Pair) Ethernet cables for noise suppression as well as different types of Ethernet cables for different transfer rates. Select which Ethernet cable is most suitable for your environment.</p>
(e) Network Interface	<p>The Network Interface is a system that can control the network. This is implemented in the printer (f). It can be implemented in a computer or you can add this system by inserting a network interface card or using an adapter. The Ethernet cable should be inserted into the LAN port of the Network Interface enabled computer or device.</p> <p>A unique ID is given to every network interface. This is known as a MAC address. The Mac address consists of a 12 digit hexadecimal number. The first half of the ID number is given to a Network Interface sales company from an institution that manages MAC addresses, and the rest is used by the Network Interface sales company to create unique address and make sure there is no overlap.</p>

**Glossary**

IP address

When sending signals through a hub, an IP address is necessary to distinguish which device is which to deliver the signals. As an address is essential when sending letters by post, an IP address is essential for network communication to receive signals. IP is an abbreviation of Internet Protocol. The IP address is a combination of the network address to which a computer or device is connected to and the host address itself.

Assigning IP Address

IP addresses cannot overlap, so a unique IP address is assigned in the network to which the device belongs.

IP addresses are divided into two groups; Global IP addresses and Private IP addresses. To connect to the Internet, you need a global IP address. These are managed by global institutions and provided to Internet providers. The provider assigns the IP address to the contractor's devices.

When using a network in a local area such as a home or office, a private IP address that is only available in the closed network is assigned to each device. The device playing the role of a doorway to the network has a global IP address and it converts the private IP address and global IP address to give access to the Internet for devices that only have a private IP address.

Devices playing the role of a doorway to the network have a function called DHCP and this assigns the IP address to devices dynamically, or a provider or network administrator assigns a static IP address manually. If a device has an IP address which is dynamically assigned, it may be changed when connection fails or reconnects. If this is inconvenient, you can get a static IP address from a provider or network administrator.

Default Gateway

A device which converts data to alternately communicate with an external network such as the Internet is called a Gateway. A router acts as a gateway when connecting to the Internet from a home or office network using Ethernet or Wi-Fi. The router's IP address is known as the Default Gateway.

Subnet Mask

The subnet mask is a numerical value which distinguishes between the network address and the host address of the IP address. You can find the breakpoint of network address and host address by masking the IP address with the subnet mask.

Ethernet Communication Standard

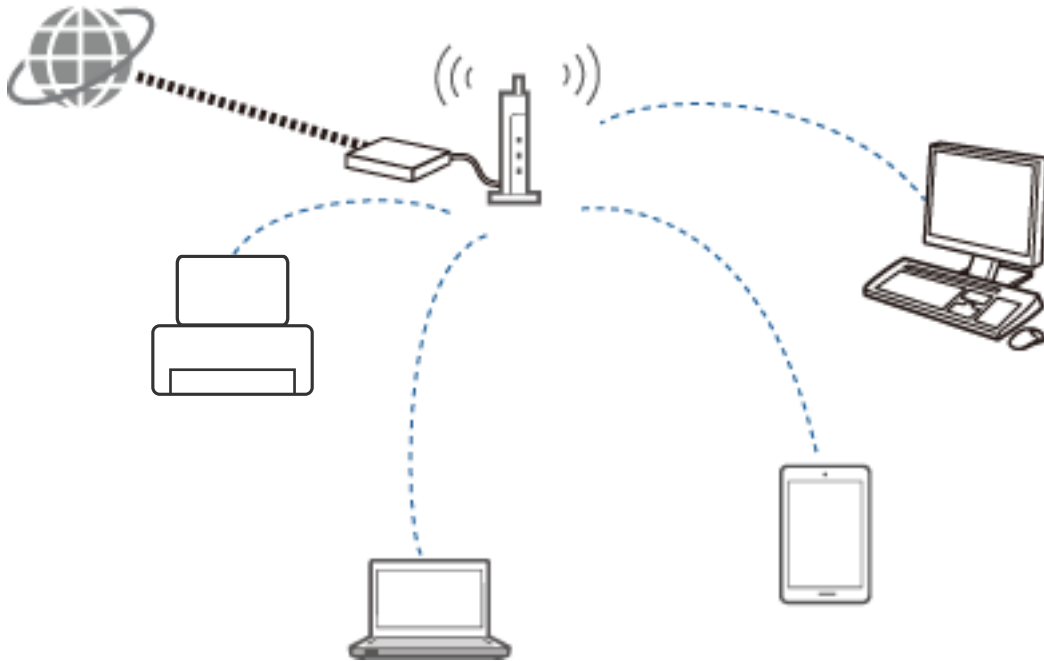
Ethernet has standards such as 1000BASE-T, 100BASE-TX, and 10BASE-T based on the transfer rate, transmission medium, transmission mode and so on. Each standard has a communication mode that must match the hub and device's communication mode to be used.

**Networks Without Cables (Wi-Fi)**

Wi-Fi uses radio waves instead of an Ethernet cable and communicates through access points.

## Appendix

### Devices Used to Configure Wi-Fi Connections



Wi-Fi uses radio waves to communicate with the network, whereas Ethernet uses cables. The following highlights the specific differences from Ethernet connections.

- It has access points.  
It is equivalent to a hub on an Ethernet connection.
- It has an SSID.  
Name of the network.
- It has a security feature to prevent unauthorized access.  
It has a feature to prevent unauthorized access.

### Glossary

Glossary of words related to Wi-Fi

- Access Point  
An access point is a radio wave relay point that connects each device on the network. It also allows access to other networks such as Ethernet networks.
- SSID  
Unlike an Ethernet network, Wi-Fi uses radio waves to connect to other devices. It is therefore possible to accidentally connect to unintended devices. To prevent devices from connecting to unknown networks, you need to specify which network to connect to. SSID (Service Set Identifier) is used to specify a network. If the SSID does not match, a connection will not be established. Normally, devices or computers search for the SSID set on the access point and establish a connection.
- Password  
This is used to enter a security encrypted network. It is also known as a Pass phrase or Encrypted Key. You can select a variety of encryption schemes, such as WEP and WPA, to encrypt your security.

## Appendix

### ❑ Stealth SSID

An access point sends out SSID signals at regular intervals that can be searched from network devices. Stealth SSID does not send out any signals so that it cannot be found in the radio wave signal. If you want to connect to an access point that uses stealth SSID, you need to enter the SSID manually into your device.

### ❑ MAC Address Filtering

MAC address filtering is a feature that only allows you to connect to devices for which the MAC address has been registered in advance. If the device is not registered in advance, a connection will not be established even if the password is correct.

### ❑ Wi-Fi Standard

The following are the current Wi-Fi standards. They each have a different communication method, frequency band, and transmission rate. IEEE802.11b, IEEE802.11a, IEEE802.11g, IEEE802.11n, IEEE802.11ac, and so on. Each device must be using the same standard to connect by Wi-Fi.

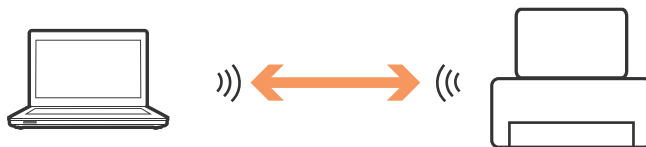
2.4 or 5 GHz is used as the frequency band for Wi-Fi communication. The frequency band has a frequency width to enable data transmission and is known as a "channel". Each device has to use the same channel of the frequency band. The printer uses the 2.4 GHz frequency. Bluetooth, microwave, and medical equipment also use the 2.4 GHz frequency, and sometimes they may interfere with the radio waves if they are too close. In this situation it may help to change the channel being used.

### ❑ Multi SSID

When you have several different Wi-Fi standards and securities, you can have SSIDs for each situation. This is known as Multi SSID. Each SSID is recognized as a different network. Even if devices are connected to the same access point, you cannot communicate with them if the SSID is different. The printer and your devices have to be on the same SSID network.

## Networks Without a Relay Point (Wi-Fi Direct/Ad Hoc)

You can connect directly to devices that do not use any relay points, such as hubs and access points.



### ❑ Wi-Fi Direct

Wi-Fi Direct allows you to connect two devices without using an access point. This is a radio communication standard certified by the Wi-Fi Alliance. By having one of the devices act as an access point in the application, you can connect directly to another device. Since this uses the same configuration as a Wi-Fi connection, you can use the same security method.

#### ❑ Simple AP Mode

In Simple AP mode, the printer acts as an access point. Enter the password into the printer's network (SSID) from a device to connect it to the same network. You can use the network continuously once it has been set up.

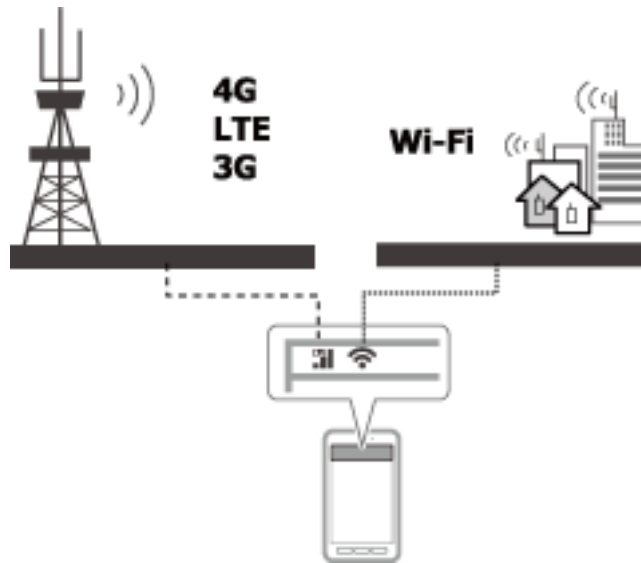
#### ❑ Wi-Fi Direct Mode

In Wi-Fi Direct mode, you can connect Wi-Fi Direct devices using a one-to-one connection. Either the printer or device acts as an access point. Even though you do not have to enter a password, you need to manually re-establish the connection each time it is disconnected.

#### ❑ Wi-Fi Ad Hoc Mode

In Wi-Fi Ad Hoc mode, you can connect devices through a radio wave directly without using an access point. Unlike Wi-Fi Direct, there are no access points even in the application.

## Public Line Networks



You can use the following methods to connect to the Internet while you are in a public place. The printer cannot be connected to a public line.

Mobile Data Communication

Mobile devices come with features such as emailing and Internet that do not require a Wi-Fi connection. Instead, they connect to the Internet using the base station of a telecommunication carrier. This is known as mobile data communication.

It is also possible to use mobile data communication from other devices.

- You can use a mobile router or tethering to relay the Wi-Fi device to the mobile data communication line.
- Use a built-in wireless adapter or one connected to a computer.

Wi-Fi Spot, Public Wi-Fi Service

This is a service offered by the owners of many facilities such as shops, stations, or airports, as well as by telecom carriers, that provides a free wireless connection to the Internet from a mobile device or computer. (In some areas this service is not free.) You cannot use the printer with this service.

## Network Functions and IPv4/IPv6 Tables

### Client Operating Systems that Support the TCP/IP Protocol

Operating System	IPv4	IPv6
Windows Vista and later	✓	✓
Windows XP	✓	-
Mac OS X v10.6.8 to v10.10.x	✓	✓

## Appendix

## The support table for NW function and IPv4/IPv6 Tables

Function		Support	Remarks
Network Print	EpsonNet Print (Windows)	IPv4	-
	Standard TCP/IP (Windows)	IPv4/IPv6	IPv6 is for Windows Vista and later.
	WSD Print (Windows)	IPv4/IPv6	For Windows Vista and later.
	Bonjour Print (Mac OS X)	IPv4/IPv6	-
	Epson Connect (Email Print)	IPv4	-

## Combinations that can be Connected at the Same Time

You can simultaneously connect with the approved combinations shown below. Set up each connection.

For example, if you want to use Wi-Fi and Simple AP mode at the same time:

- Set your printer to Wi-Fi from the computer, and then connect.
- Set your printer to USB connection by using software disc or from the website.

	Wi-Fi	Ad Hoc Mode	USB
Wi-Fi	-	-	✓
Ad Hoc Mode	-	-	✓
USB	✓	✓	-

## Ports and Protocols

### EpsonNet Print (for Windows Only)

This is Epson's original printing port.

EpsonNet Print is set to the print port when you set up your printer using the software disc supplied or using the software downloaded from the website. EpsonNet Print is also set to the print port when you install the printer driver.

- You do not need to reset the printer's network settings even if the printer's IP address is changed by the DHCP function on a server or router.
- You can use printers in a different network segment over the router.
- The printer's status is displayed at the top of the Windows spooler screen.

### Standard TCP/IP

This is a communication protocol pre-installed on a computer.

- You need to reset the printer's network settings when the printer's IP address is changed by the DHCP function on a server or router.

## Appendix

- You can use printers in a different network segment over the router.
- You can acquire a print log from **Event Viewer**.

### Bonjour (for Mac OS X Only)

This is a protocol used in Mac OS X.

You do not need to reset the printer's network settings when the printer's IP address is changed by the DHCP function on a server or router.

To add printers from Bonjour, enter the product's model number on the following website. Go to Support and follow the on-screen instructions to add printers.

<http://epson.sn> > **Additional Software**

### WSD (for Windows Only)

WSD (Web Services on Devices) is a communication protocol pre-installed on computers running Windows Vista or later.

- You do not need to reset the printer's network settings when the printer's IP address is changed by the DHCP function on a server or router.
- You can use printers in a different network segment over the router.

**Note:**

*The WSD port is automatically set up if your computer's operating system is later than Windows 8. If you set up the WSD port without installing the Epson printer driver, your computer's standard driver is set up instead. In that case, we recommend installing the Epson printer driver separately. Access the following website, then enter the product's model number.*

<http://epson.sn>

*After installing, change the printer driver from the printer's property screen under Devices and Printers.*

*When printing using WSD, select the printer on the network.*

### Related Information

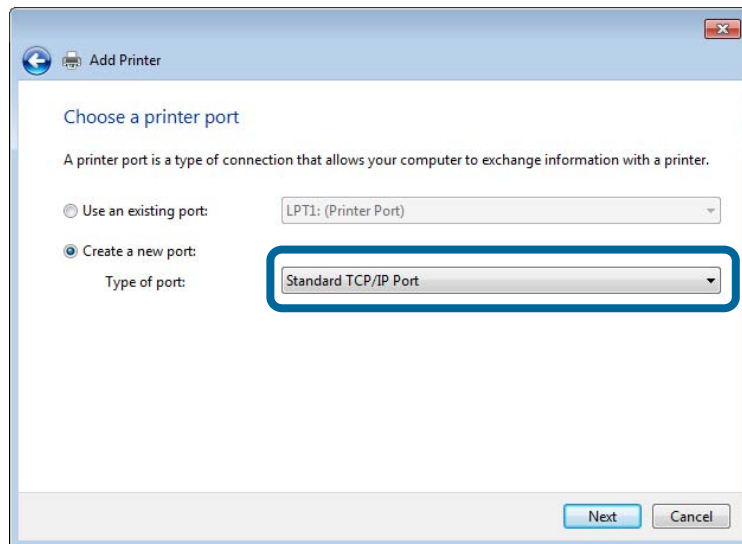
- ➔ [“Setting Up Standard TCP/IP Ports – Windows” on page 55](#)
- ➔ [“Setting Up a WSD Port – Windows” on page 58](#)

## Setting Up Standard TCP/IP Ports – Windows

1. Open the devices and printers screen.
  - Windows 8.1/Windows 8  
**Desktop > Settings > Control Panel > Hardware and Sound or Hardware > Devices and Printers.**
  - Windows 7  
 Click start > **Control Panel > Hardware and Sound (or Hardware) > Devices and Printers.**
  - Windows Vista  
 Click start > **Control Panel > Hardware and Sound > Printers.**
  - Windows XP  
 Click start > **Control Panel > Printers and Other Hardware > Printers and Faxes.**

## Appendix

2. Add a printer.
  - Windows 8.1/Windows 8  
Click **Add printer**, and then select **The printer that I want isn't listed**.
  - Windows 7  
Click **Add printer**.
  - Windows Vista  
Click **Install Printer**.
  - Windows XP  
Click **Install Printer**, and then click **Next**.
3. Add a local printer.
  - Windows 8.1/Windows 8  
Select **Add a local printer or network printer with manual settings**, and then click **Next**.
  - Windows 7/Windows Vista  
Click **Add a local printer**.
  - Windows XP  
Select **Local printer attached to this computer**, and then click **Next**.
4. Select **Create a new port**, select **Standard TCP/IP Port** as the Port Type, and then click **Next**.  
For Windows XP, click **Next** on the **Add Standard TCP/IP Printer Port Wizard** screen.

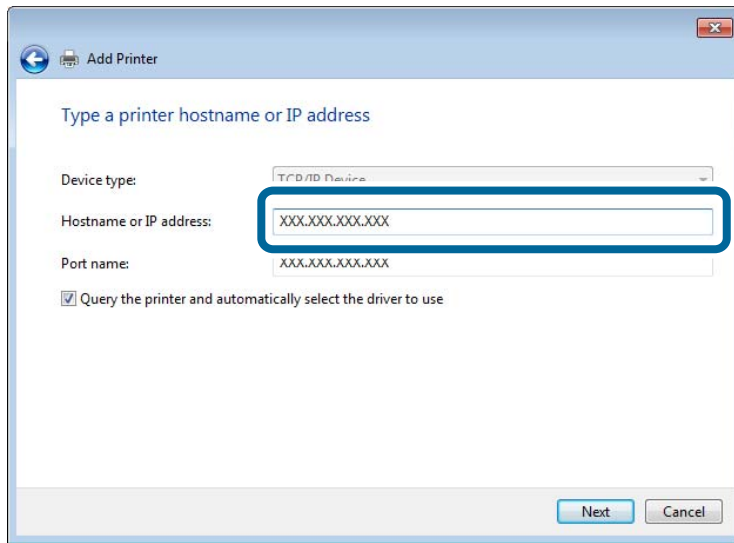


5. Enter the printer's IP address in **Host Name or IP Address** or **Printer Name or IP Address**, and then click **Next**.  
Do not change **Port Name**.  
Click **Continue** when the **User Account Control** screen is displayed.



## Appendix

For Windows XP, click **Done** on the **Standard TCP/IP Printer Port** screen.



6. Set the printer driver.

- If the printer driver is already installed:

Select **Manufacturer** and **Printer**. Click **Next**.

- If the printer driver is not installed:

Click **Have Disk** and then insert the software disc supplied with the printer. Click **Browse**, and then select the folder on the disc containing the printer driver. Make sure you select the correct folder. The location of the folder may change depending on your operating system.

32 bit version of Windows: WINX86

64 bit version of Windows: WINX64

7. Follow the on-screen instructions.

For Windows XP, setup is complete. For Windows Vista and later, check the port configuration.

## Checking the Port Configuration - Windows

After setting up the port, check the port configuration if you are using Windows Vista or later and using the TCP/IP port for printing.

1. Open the devices and printers screen.

- Windows 8.1/Windows 8

**Desktop > Settings > Control Panel > Hardware and Sound** or **Hardware > Devices and Printers**.

- Windows 7

Click start > **Control Panel > Hardware and Sound** (or **Hardware**) > **Devices and Printers**.

- Windows Vista

Click start > **Control Panel > Hardware and Sound > Printers**.

2. Open the devices and printers screen.

- Windows 8.1/Windows 8/Windows 7

Right-click the printer icon, and then click **Printer properties**.

## Appendix

- Windows Vista

Right-click the printer icon, and then select **Run as administrator** > **Properties**.

3. Click the **Ports** tab, select **Standard TCP/IP Port**, and then click **Configure Port**.

4. Check the port configuration.

- For RAW

Check that **Raw** is selected in **Protocol**, and then click **OK**.

- For LPR

Check that **LPR** is selected in **Protocol**. Enter "PASSTHRU" in **Queue name** from **LPR Settings**. Select **LPR Byte Counting Enabled**, and then click **OK**.

## Setting Up a WSD Port – Windows

This section explains how to set up a WSD port for Windows 7/Windows Vista.

### Note:

For Windows 8, the WSD port is set up automatically.

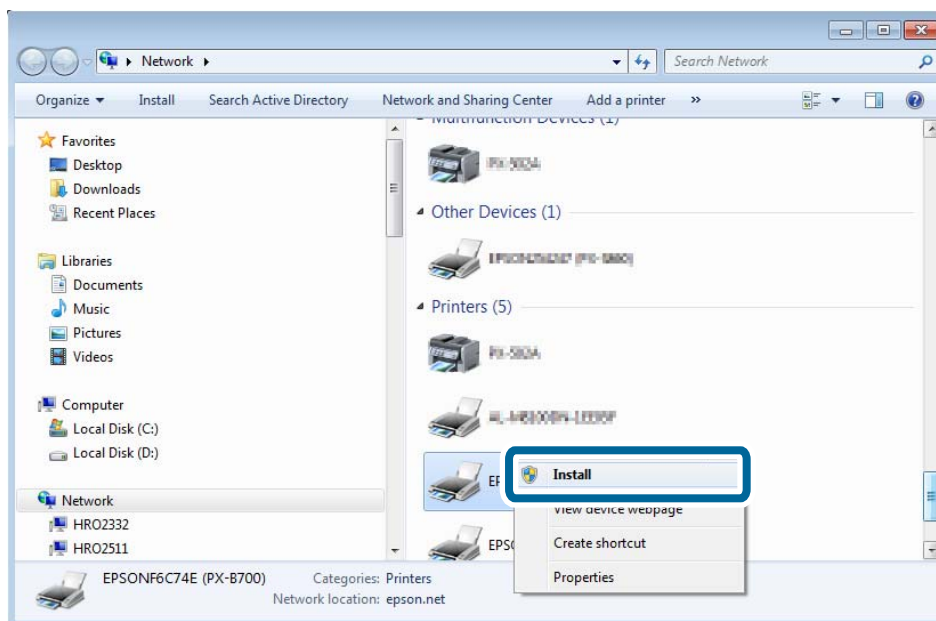
The following is necessary to set up a WSD port.

- The printer and computer are connected to the network.
- The printer driver is installed on the computer.

1. Turn the printer on.
2. Click start, and then click **Network** on the computer.
3. Right-click the printer, and then click **Install**.

Click **Continue** when the **User Account Control** screen is displayed.

Click **Uninstall** and start again if the **Uninstall** screen is displayed.

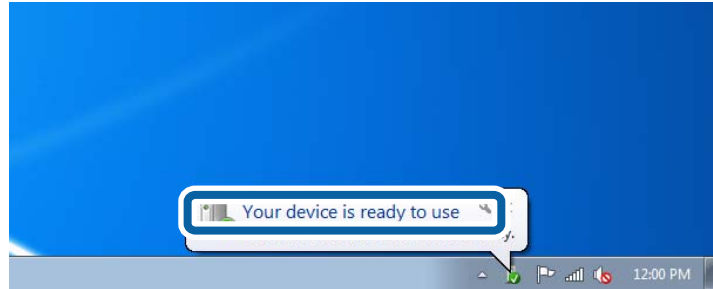


## Appendix

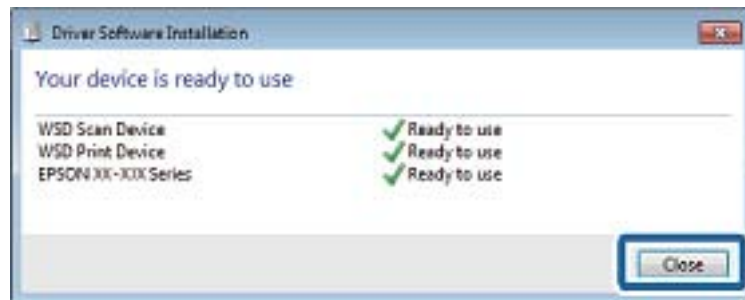
**Note:**

The printer name you set on the network and model name (EPSONXXXXXX(XX-XXXX)) are displayed on the network screen. You can check the printer's name set on the network from the printer's control panel or by printing a network status sheet.

4. Click **Your device is ready to use**.



5. Check the message, and then click **Close**.



6. Open the devices and printers screen.

- Windows 7

Click start > **Control Panel** > **Hardware and Sound** (or **Hardware**) > **Devices and Printers**.

- Windows Vista

Click start > **Control Panel** > **Hardware and Sound** > **Printers**.

7. Check that an icon with the printer's name on the network is displayed.

Select the printer name when printing with WSD.

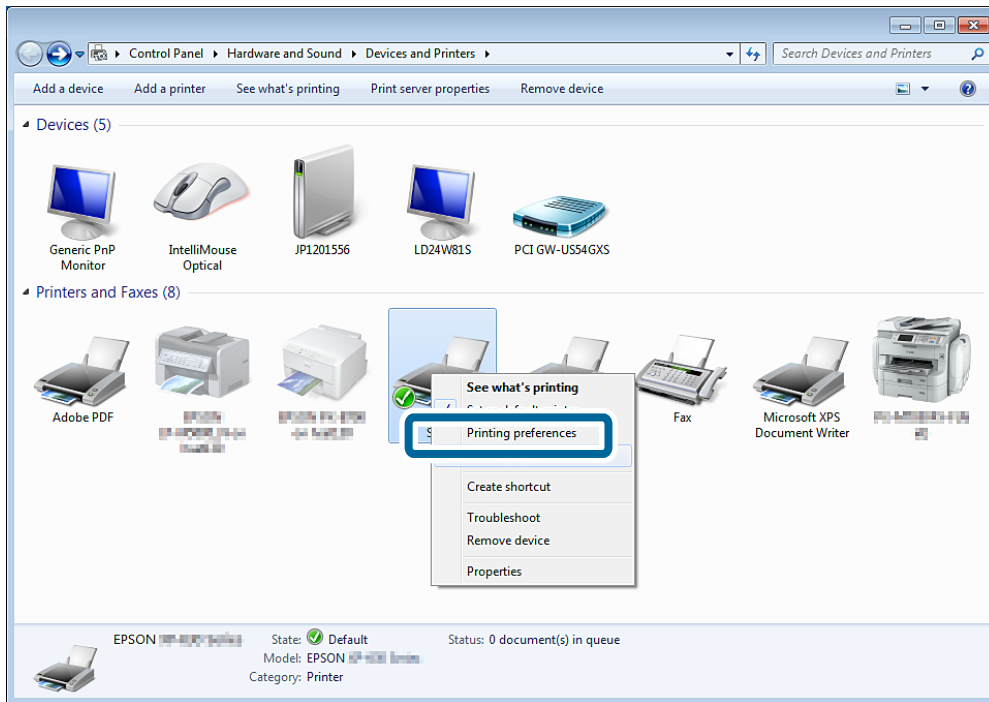
## Checking the Print Port

For Windows you can switch between multiple print ports to print. Check which print port is available. The following example is for Windows 7.

1. Click start, and then select **Devices and Printers**.

## Appendix

2. Right-click the printer icon, and then click **Printer Properties**.



3. Select the **Ports** tab to check which print port is selected.  
Print ports selected in the port column are available. You can check the port type from **Description**.

