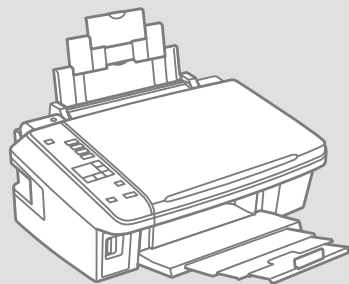


Epson Stylus® **SX210 / TX210** Series / Epson ME™ **OFFICE 510**

EPSON
EXCEED YOUR VISION






Basic Operation Guide

- for use without a computer -



About This Guide

Follow these guidelines as you read your instructions:

				
<p>Warning: Warnings must be followed carefully to avoid bodily injury.</p>	<p>Caution: Cautions must be observed to avoid damage to your equipment.</p>	<p>Must be observed to avoid bodily injury and damage to your equipment.</p>	<p>Note: Notes contain important information and hints for using the printer.</p>	<p>Indicates a page number where additional information can be found.</p>

Copyright Notice

No part of this publication may be reproduced, stored in a retrieval system, or transmitted in any form or by any means, electronic, mechanical, photocopying, recording, or otherwise, without the prior written permission of Seiko Epson Corporation. The information contained herein is designed only for use with this product. Epson is not responsible for any use of this information as applied to other printers.

Neither Seiko Epson Corporation nor its affiliates shall be liable to the purchaser of this product or third parties for damages, losses, costs, or expenses incurred by the purchaser or third parties as a result of accident, misuse, or abuse of this product or unauthorized modifications, repairs, or alterations to this product, or (excluding the U.S.) failure to strictly comply with Seiko Epson Corporation's operating and maintenance instructions.

Seiko Epson Corporation shall not be liable for any damages or problems arising from the use of any options or any consumable products other than those designated as Original Epson Products or Epson Approved Products by Seiko Epson Corporation.

Seiko Epson Corporation shall not be held liable for any damage resulting from electromagnetic interference that occurs from the use of any interface cables other than those designated as Epson Approved Products by Seiko Epson Corporation.

EPSON and EPSON STYLUS® are registered trademarks, and Exceed Your Vision and EPSON ME are trademarks of Seiko Epson Corporation.

SDHC™ is a trademark.

Memory Stick, Memory Stick Duo, Memory Stick PRO, Memory Stick PRO Duo, Memory Stick PRO-HG Duo, Memory Stick Micro, MagicGate Memory Stick, and MagicGate Memory Stick Duo are trademarks of Sony Corporation.

xD-Picture Card™ is a trademark of Fuji Photo Film Co., Ltd.

General Notice: Other product names used herein are for identification purposes only and may be trademarks of their respective owners. Epson disclaims any and all rights in those marks.



MEMORY STICK PRO™

Contents

Important Safety Instructions.....	5
Guide to Control Panel.....	6
Using the LCD Screen.....	7
Power Saving Function.....	7

Handling Media

Selecting Paper.....	10
Loading Paper.....	11
Inserting a Memory Card.....	12
Placing Originals.....	14

Copying/Printing/Scanning

Copying Photos or Documents.....	16
Printing Photos.....	18
Printing Photos from an Index Sheet.....	20
Scanning to a Computer.....	23


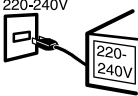










Maintenance

Checking/Cleaning the Print Head.....	26
Aligning the Print Head.....	28
Changing Language & Resetting.....	30

Solving Problems

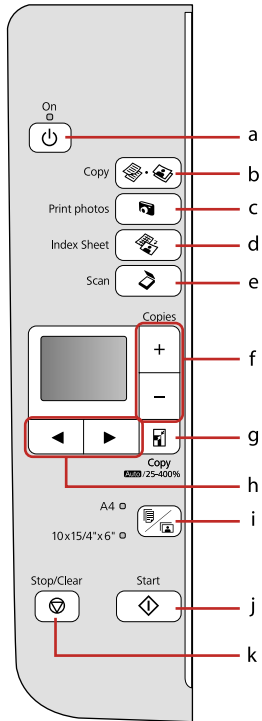
Error/Warning Messages.....	32
Replacing Ink Cartridges.....	33
Paper Jam.....	36
Print Quality/Layout Problems.....	38
Contacting Customer Support.....	39

Important Safety Instructions

					
<p>Use only the power cord that comes with the printer. Use of another cord may cause fire or shock. Do not use the cord with any other equipment.</p>	<p>Make sure the power cord meets all relevant local safety standards.</p>	<p>Place the printer near a wall outlet where the power cord can be easily unplugged.</p>	<p>Use only the type of power source indicated on the label.</p>	<p>Do not let the power cord become damaged or frayed.</p>	<p>Do not open the scanner unit while copying, printing, or scanning.</p>
					
<p>Do not use aerosol products that contain flammable gases inside or around the printer. Doing so may cause fire.</p>	<p>Except as specifically explained in your documentation, do not attempt to service the printer yourself.</p>	<p>Keep ink cartridges out of the reach of children and do not drink the ink.</p>	<p>If ink gets on your skin, wash it off with soap and water. If it gets in your eyes, flush them immediately with water. If you still have discomfort or vision problems, see a doctor immediately.</p>	<p>Do not shake ink cartridges after opening their packages; this can cause leakage.</p>	<p>If you remove an ink cartridge for later use, protect the ink supply area from dirt and dust and store it in the same environment as the printer. Do not touch the ink supply port or surrounding area.</p>

Guide to Control Panel

Control panel design varies by area.

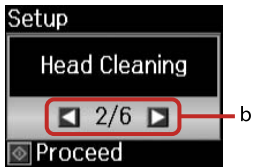
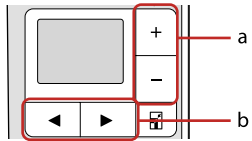


a	b	c	d	e
On	Copy	Print photos	Index Sheet	Scan
Turns on/off printer.	Selects to copy photo/documents.	Selects to view and print photos.	Selects to print photos using index sheet.	Selects to scan and save documents.

f	g	h	i
+, -	Copy		Paper select
Sets the number of copies.	Changes the zoom settings for copying.	Selects photos and menus.	Selects between A4 plain paper and 10x15/4"x6" photo paper for the paper loaded in the sheet feeder.

j	k
Start	Stop/Clear
Starts copying/printing.	Stops copying/printing or resets settings.

Using the LCD Screen



a	b
Use Copies + or - to set the number of copies.	Press ◀ or ▶ to select the setting item, or change the photo displayed on the LCD screen.

Power Saving Function

After 13 minutes of inactivity, the screen turns black to save energy. Press any button (except **On**) to return the screen to its previous state.

Handling Media



Selecting Paper

	If you want to print on this paper...	Choose this on the control panel	Loading capacity (sheets)
a	Plain paper	A4 Plain Paper	[12 mm] *1 *2
b	Epson Bright White Ink Jet Paper	A4 Plain Paper	80 *2
c	Epson Premium Ink Jet Plain Paper	A4 Plain Paper	80 *2
d	Epson Premium Glossy Photo Paper	10x15/4"x6" Photo Paper	20
e	Epson Premium Semigloss Photo Paper	10x15/4"x6" Photo Paper	20
f	Epson Ultra Glossy Photo Paper	10x15/4"x6" Photo Paper	20
g	Epson Glossy Photo Paper	10x15/4"x6" Photo Paper	20
h	Epson Photo Paper	10x15/4"x6" Photo Paper	20

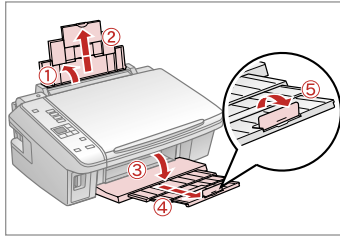
The availability of special paper varies by area.

*1 Paper with a weight of 64 to 90 g/m².

*2 30 sheets for paper that already has printing on one side.

Loading Paper

1



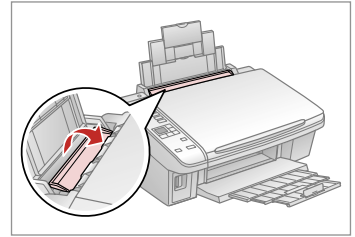
Open and slide out.



See the online User's Guide when using Legal size paper.

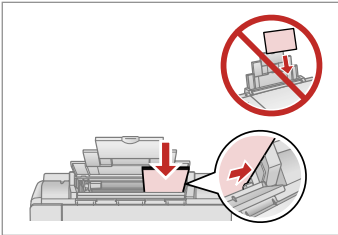
Align the edges of the paper before loading.

2



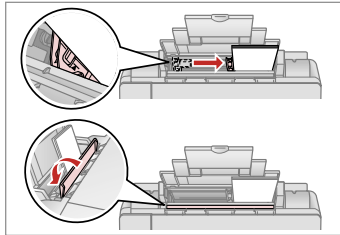
Flip forward.

3



Load printable side up.

4



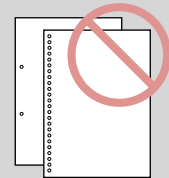
Fit.



Do not load paper above the ∇ arrow mark inside the edge guide.

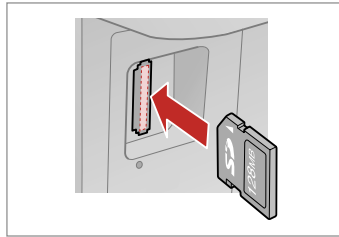


Do not use paper with binder holes.



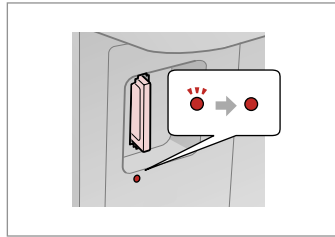
Inserting a Memory Card

1



Insert one card at a time.

2



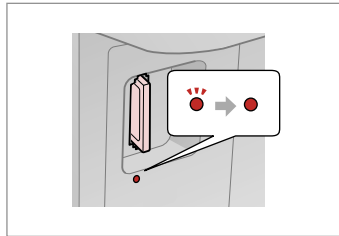
Check the light stays on.



Do not try to force the card all the way into the slot. It should not be fully inserted.

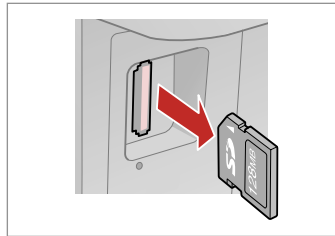
Removing a Memory Card

1



Check the light stays on.

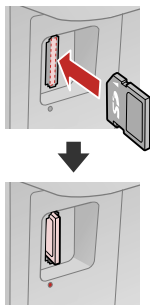
2



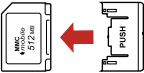








Remove.



On	Flashing



	xD-Picture Card xD-Picture Card Type M xD-Picture Card Type M+ xD-Picture Card Type H
	SD SDHC MultiMediaCard MMCplus
	MMCmobile *
	MMCmicro *
	miniSD * miniSDHC *
	microSD * microSDHC *
	Memory Stick Memory Stick PRO MagicGate Memory Stick
	Memory Stick Duo * Memory Stick PRO Duo * Memory Stick PRO-HG Duo * MagicGate Memory Stick Duo *
	Memory Stick Micro *

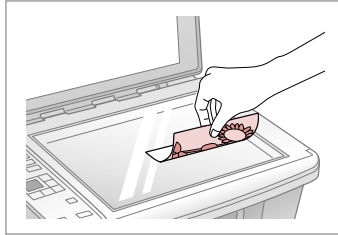
*Adapter required



If the memory card needs an adapter then attach it before inserting the card into the slot, otherwise the card may get stuck.

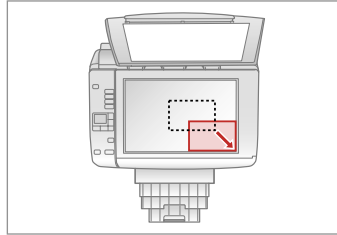
Placing Originals

1



Place face-down horizontally.

2



Slide to the corner.



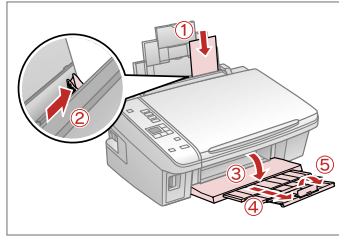
You can reprint photos from
30 × 40 mm to 127 × 178 mm.

Copying/Printing/Scanning



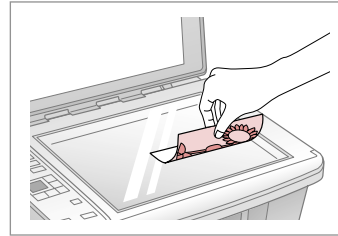
Copying Photos or Documents

1  → 11



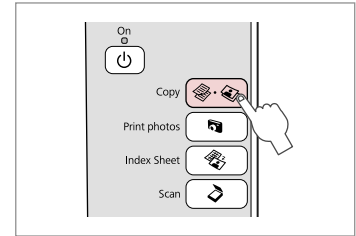
Load paper printable side up.

2  → 14



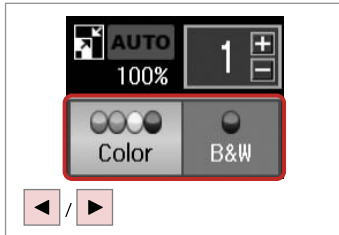
Place original horizontally.

3



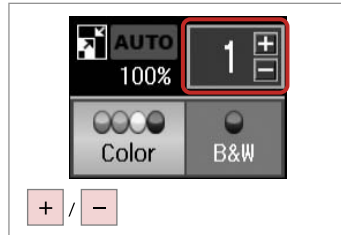
Select **Copy**.

4




Select a color mode.

5

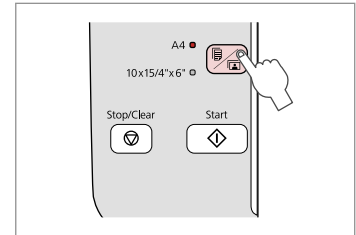


Set the number of copies.



To clear the number of copies, press the  **Copy** button.

6

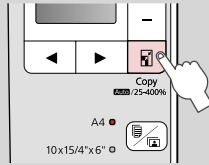


Select paper type/size.

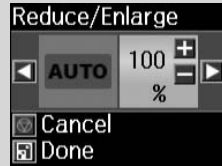


After step 6, if you want to change the copy zoom, press the **Copy** button as shown in (1), and then use + or - to change the zoom manually as shown in (2). Or, press the ◀ button to select AUTO to fit to your paper size.

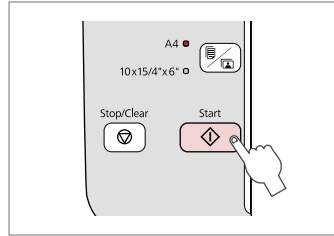
(1)



(2)



7



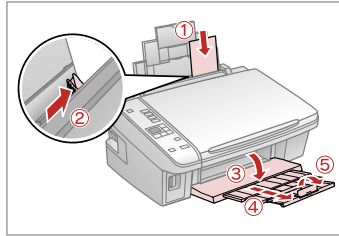
Start copying.



You can speed up plain paper copying, however print quality declines. In step 7, hold down ◊ button until the ⏻ light starts flashing.

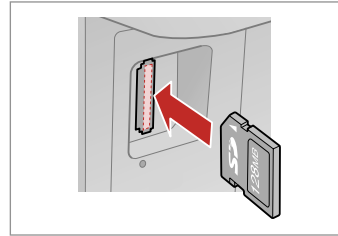
Printing Photos

1  → 11



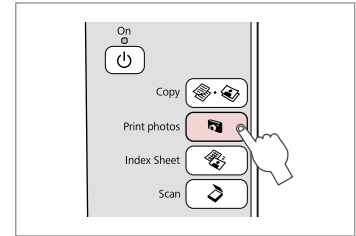
Load photo paper.

2  → 12



Insert a memory card.

3



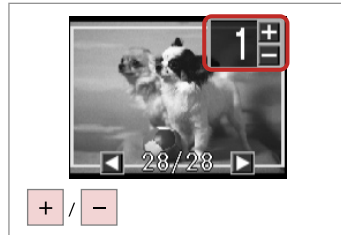
Select **Print photos**.

4




Select a photo.

5



Set the number of copies.

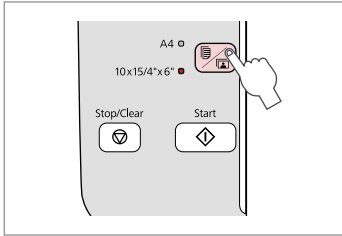


To clear the number of copies, press the  button.



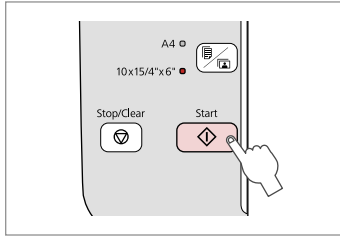
To select more photos, repeat steps **4** and **5**.

6



Select **10x15/4"x6"**.

7



Start printing.



Printing Photos from an Index Sheet

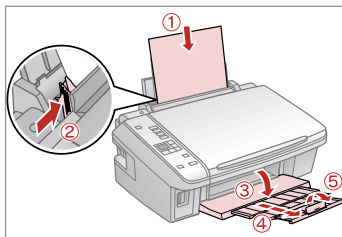


You can print photos using an A4 index sheet. First print an index sheet, mark the photos that you want to print, and then scan the index sheet to print your photos.



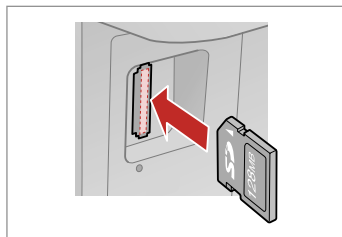
All of the photos on the card are printed in groups of 30 thumbnails per index sheet. You may need several sheets of A4 plain paper.

1  **→ 11**



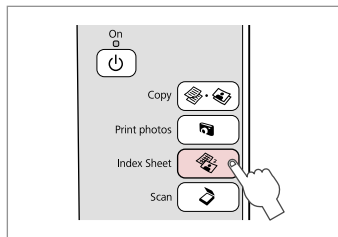
Load A4-size plain paper.

2  **→ 12**



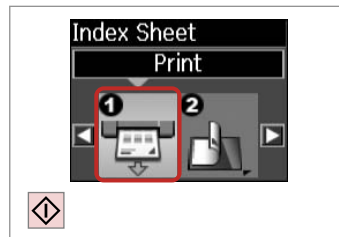
Insert a memory card.

3



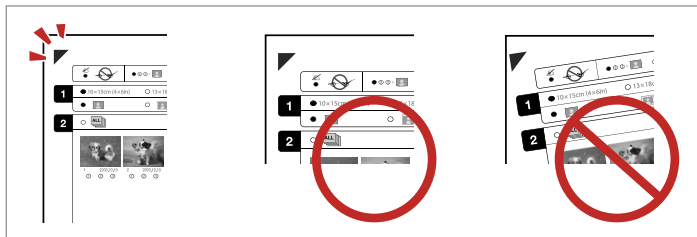
Select **Index Sheet**.

4



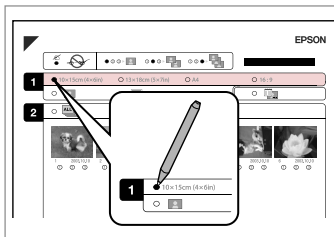
Print the index sheet.

5



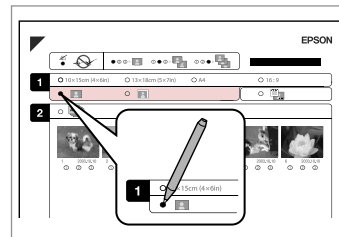
Check ▲ aligns with the corner on the sheet.

6



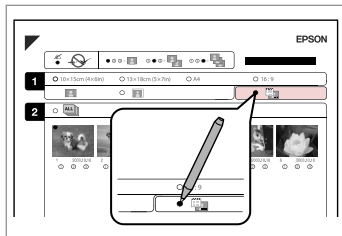
Select a paper size.

7



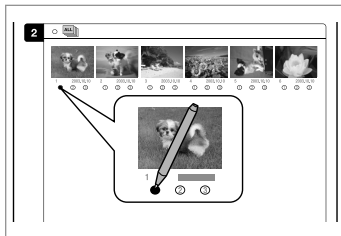
Select border or borderless.

8



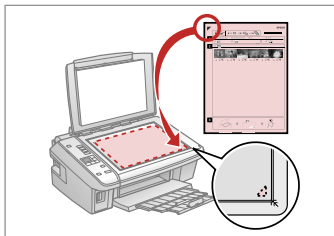
Select to print with a date stamp.

9



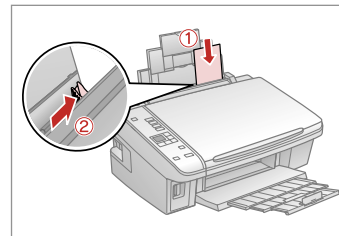
Select the number of copies.

10



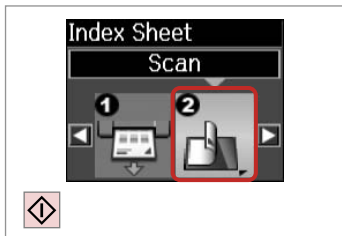
Place the index sheet face-down.

11



Load the photo paper.

12



Print photos from the index sheet.



You can print photos on Ultra Glossy Photo Paper, Premium Glossy Photo Paper, or Premium Semigloss Photo Paper.



If you have more than one index sheet, wait until printing is complete for the first sheet, and then repeat steps 10 to 12 to scan and print from each additional sheet.

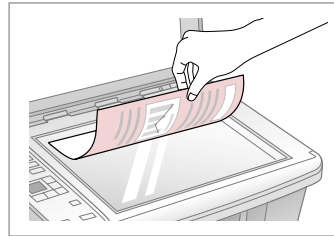


Scanning to a Computer



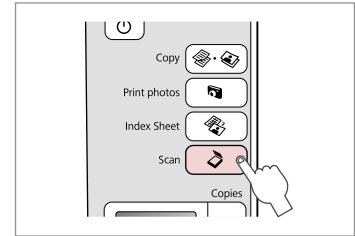
Make sure you have installed software for this printer on your computer and connected following the instructions on the Start Here poster.

1



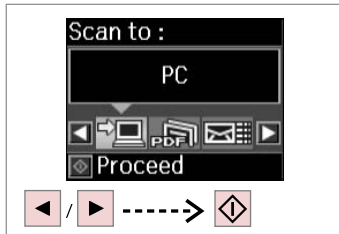
Place face down horizontally.

2



Select **Scan**.

3



Select an item.



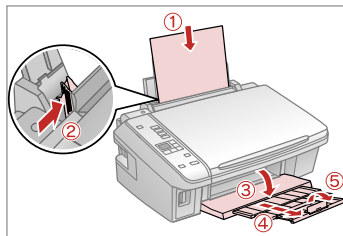
After step 3, your computer's scanning software automatically starts scanning. For details, see the online User's Guide.

Maintenance



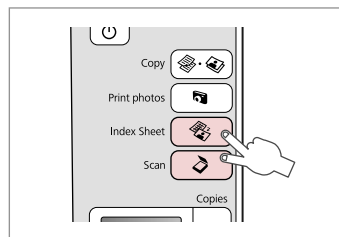
Checking/Cleaning the Print Head

1  → 11



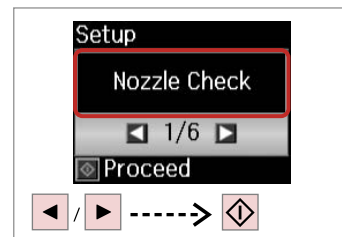
Load A4-size plain paper.

2



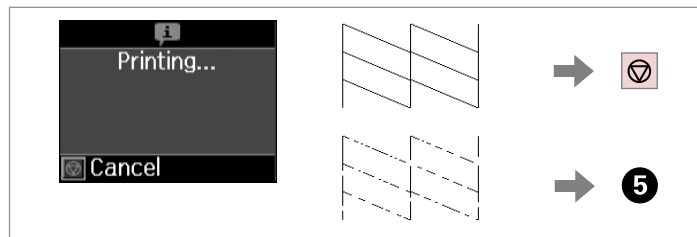
Press both buttons at the same time.

3



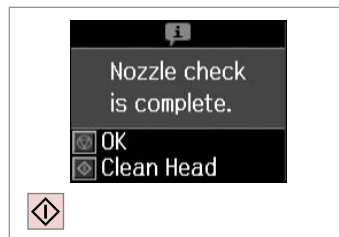
Select **Nozzle Check**.

4



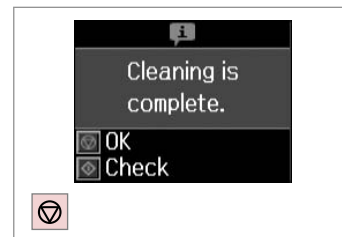
Check the pattern.

5



Start head cleaning.

6



Finish head cleaning.



Print head cleaning uses ink from all cartridges, so clean the print head only if quality declines.

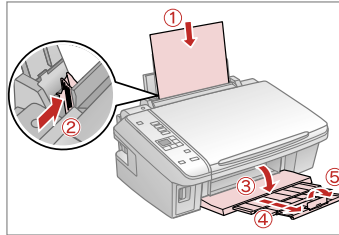


If it does not improve after cleaning four times, turn off the printer for at least six hours. Then try cleaning the print head again. If quality still does not improve, contact Epson Support.



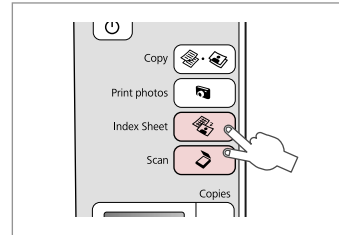
Aligning the Print Head

1  → 11



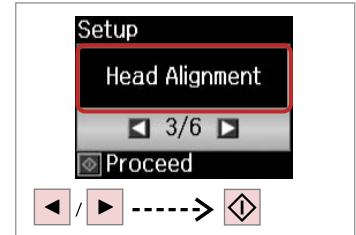
Load A4-size plain paper.

2



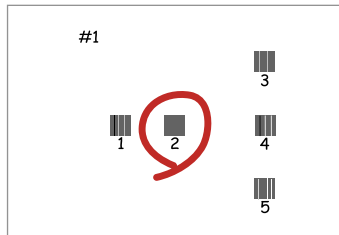
Press both buttons at the same time.

3



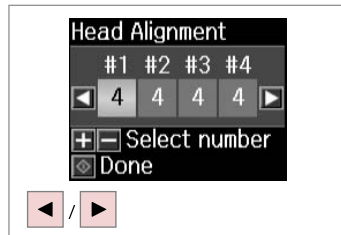
Select **Head Alignment**.

4



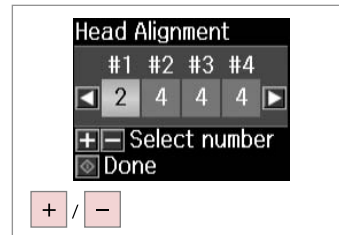
Select the most solid pattern.

5



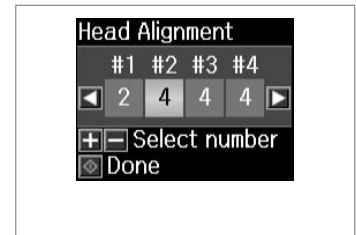
Select the pattern number.

6



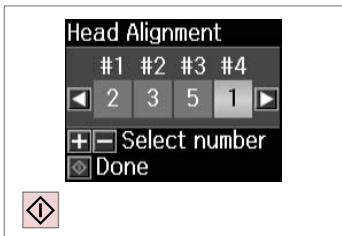
Enter the number.

7



Repeat **5** and **6** for all patterns.

8



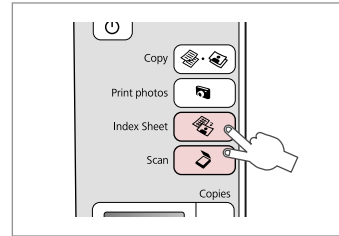
Finish aligning the print head.



Changing Language & Resetting

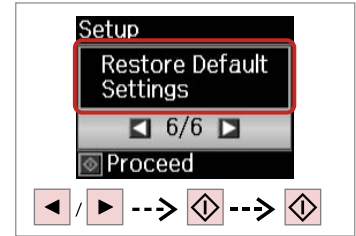
Restoring Default Settings

1



Press both buttons at the same time.

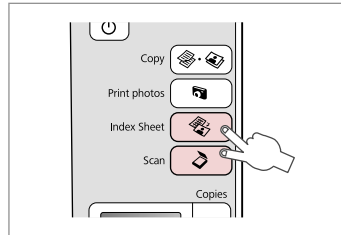
2



Select **Restore Default Settings**.

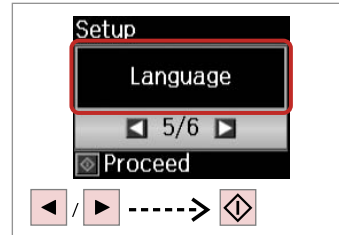
Changing the Language

1



Press both buttons at the same time.

2



Select **Language**.

3

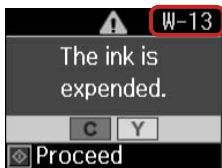


Select a language.

Solving Problems



Error/Warning Messages



Code	Solution
E-01	Turn the printer off and then back on. Make sure that no paper is still in the printer. If the error still appears, contact Epson support.
E-02	Turn the printer off and then back on. If the error message still appears, contact Epson support.
E-10	Turn off the printer. Contact Epson support to replace ink pads.
I-01	Paper out. Load paper and press \rightarrow 11
I-10	No photos on the memory card. Check the memory card and try again.
I-11	Memory card is not inserted. Insert a memory card. \rightarrow 12
W-01	Press to return to the previous screen. Contact Epson support to replace ink pads before the end of their service life. When the ink pads are saturated, the printer stops and Epson support is required to continue printing.
W-02	Paper jam. Turn off the printer, remove the jammed paper, and then turn it back on. \rightarrow 37
W-03	Paper jam. Open the scanner unit, remove the jammed paper, and then press . \rightarrow 36
W-04	The ink cartridge cover is open. Open the scanner unit and close the ink cartridge cover. Press to continue. \rightarrow 33
W-05	Remove and reload the paper, then press . \rightarrow 11
W-10	The ink cartridge(s) shown on the LCD panel have not been installed. Install them. \rightarrow 33
W-11	Cannot recognize the ink cartridge(s) shown on the LCD panel. Install them correctly. \rightarrow 33
W-13	You need to replace the ink cartridge(s) shown on the LCD panel. \rightarrow 33
W-20	There is no index sheet or it is not placed correctly on the document table. Check it and try again.
W-21	Photos are not selected or the ovals are marked incorrectly on the index sheet. Correct the sheet and try again.
W-22	The paper type is not selected or ovals are marked incorrectly on the index sheet. Correct the sheet and try again.
W-23	The contents of the memory card have changed. Print a new index sheet and try again.
W-30	Make sure that the memory card is inserted correctly. If it is, check that there are no problems with the card and try again.
W-40	The settings you have made will be cleared. Select Yes or No .
W-41	Replace the cartridge(s) shown on the LCD panel before cleaning the print head. \rightarrow 33

Replacing Ink Cartridges

Ink Cartridge Handling Precautions

- Never move the print head by hand.
- Some ink is consumed from all cartridges during the following operations: print head cleaning and ink charging when an ink cartridge is installed.
- For maximum ink efficiency, only remove an ink cartridge when you are ready to replace it. Ink cartridges with low ink status may not be used when reinserted.
- Epson recommends the use of genuine Epson ink cartridges. Epson cannot guarantee the quality or reliability of non-genuine ink. The use of non-genuine ink may cause damage that is not covered by Epson's warranties, and under certain circumstances, may cause erratic printer behavior. Information about non-genuine ink levels may not be displayed, and use of non-genuine ink is recorded for possible use in service support.
- Make sure you have a new ink cartridge before you begin replacement. Once you start replacing a cartridge, you must complete all the steps in one session.
- Leave the expended cartridge installed until you have obtained a replacement. Otherwise the ink remaining in the print head nozzles may dry out.
- Do not open the ink cartridge package until you are ready to install it in the printer. The cartridge is vacuum packed to maintain its reliability.
- Other products not manufactured by Epson may cause damage that is not covered by Epson's warranties, and under certain circumstances, may cause erratic printer behavior.
- Do not turn off the printer during ink charging as this will waste ink.
- When an ink cartridge is expended, you cannot continue printing even if the other cartridges still contain ink.

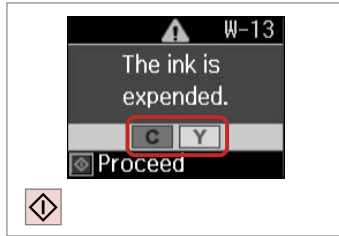




To replace an ink cartridge before it is expended, press the **Index Sheet** and **Scan** buttons at the same time to enter Setup mode. Then, use the **◀** or **▶** buttons to select **Ink Cartridge Replacement**, and then press the **Start** button. Next, go to step 2 in the following instructions.

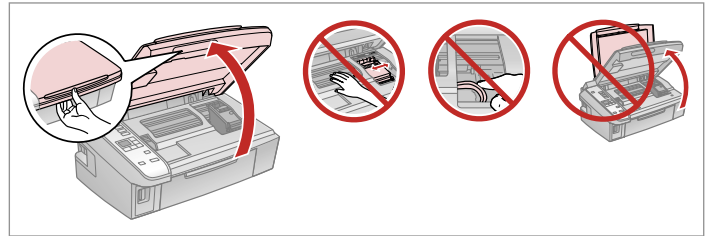


1



Check the color to replace.

2

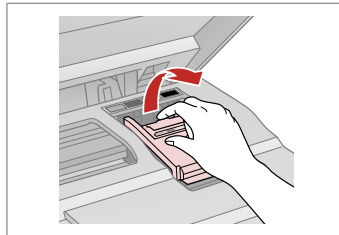


Open.



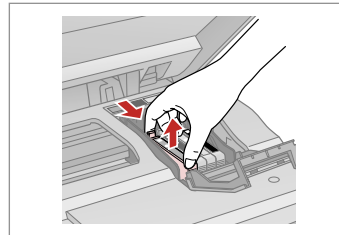
Never open the cartridge cover while the print head is moving.

3



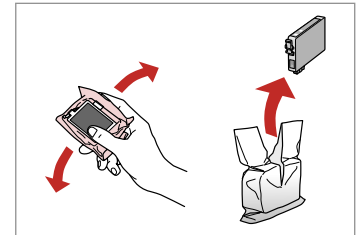
Open.

4



Remove.

5

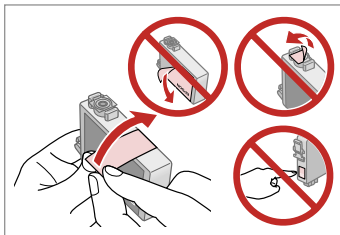


Shake new cartridge.



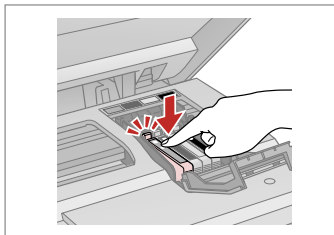
Be careful not to break the hooks on the side of the ink cartridge.

6



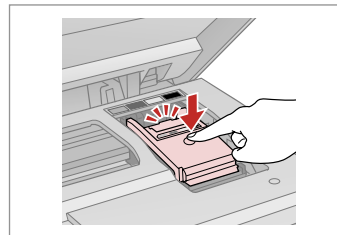
Remove the yellow tape.

7



Insert and push.

8

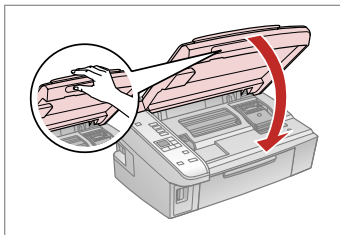


Close.



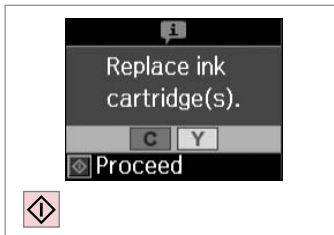
If you find it difficult to close the cover, press down on each cartridge until it clicks into place.

9



Close.

10



Start charging ink.

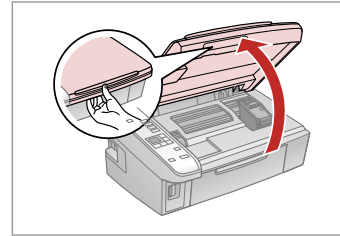


If you had to replace an ink cartridge during copying, to ensure copy quality after ink charging is finished, cancel the job that is copying and start again from placing the originals.

Paper Jam

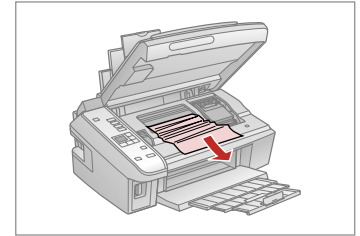
Paper Jam - jammed inside 1

1



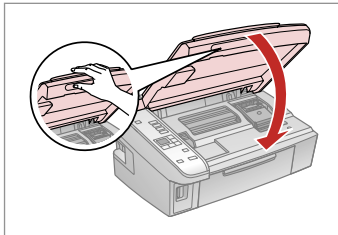
Open.

2



Remove.

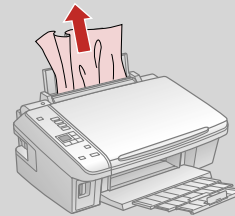
3



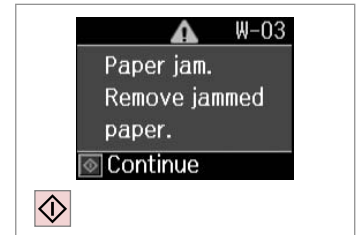
Close.



If paper still remains near the rear feeder, gently pull it out.



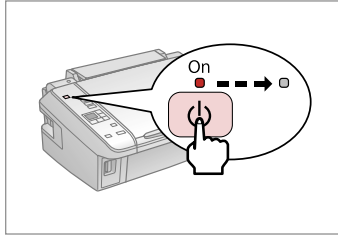
4



Press to resume printing.

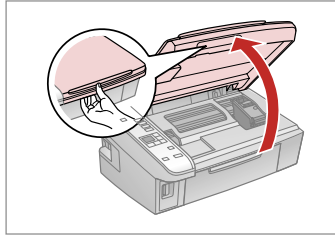
Paper Jam - jammed inside 2

1



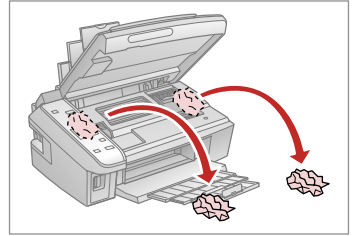
Turn off .

2



Open.

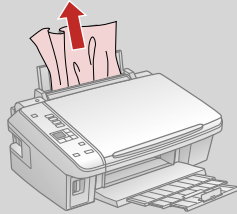
3



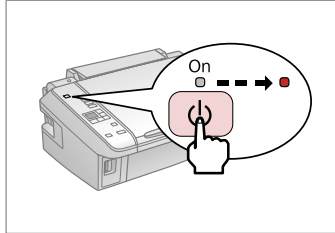
Remove.



If paper still remains near the rear feeder, gently pull it out.



4

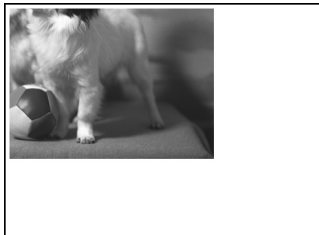
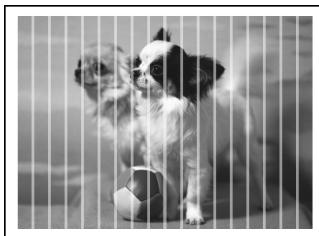


Turn on.

Print Quality/Layout Problems

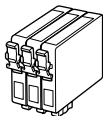
Try the following solutions in order from the Top. For further information, see your online User's Guide.

Problems	Solution No.
You see banding (light lines) in your printouts or copies.	1 2 3 4 6 8
Your printout is blurry or smeared.	1 2 3 4 5 7
Your printout is faint or has gaps.	1 2 3 6
Your printout is grainy.	4
You see incorrect or missing colors.	3 6
The image size or position is incorrect.	1 9 10 11
Solutions	
1	Make sure you selected the correct paper setting for the loaded paper. ☐ ➔ 10
2	Make sure the printable side (the whiter or glossier side) of the paper is facing in the right direction. ☐ ➔ 11
3	Clean the print head. ☐ ➔ 26
4	Align the print head. ☐ ➔ 28 If quality is not improved, try aligning using the printer driver utility. See your online User's Guide to align the print head.
5	To clean the inside of the printer, make a copy without placing a document on the document table. For further information, see your online User's Guide .
6	Use up ink cartridge within six months of opening vacuum package. ☐ ➔ 33
7	Try to use genuine Epson ink cartridges and paper recommended by Epson.
8	If a moiré (cross-hatch) pattern appears on your copy, change the zoom setting or shift the position of your original. ☐ ➔ 14, 17
9	Make sure you loaded paper and placed the original correctly. ☐ ➔ 11, 14
10	If the edges of the copy or photo are cropped off, move the original slightly away from the corner. ☐ ➔ 14
11	Clean the document table. See your online User's Guide .



Contacting Customer Support

If you cannot solve the problem using the troubleshooting information, contact customer support services for assistance. You can get the contact information for customer support for your area in your online User's Guide or warranty card. If it is not listed there, contact the dealer where you purchased your product.

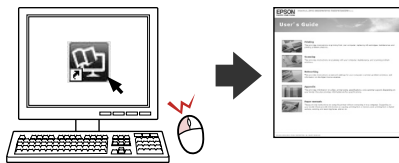


Available ink cartridge sizes vary by area.

- *1 For the SX210 Series, Epson recommends the T071 ink cartridges for normal print usage.
- *2 For the TX210 Series, the ink cartridge numbers between the parenthesis may be displayed depending on the area.

	Black	Cyan	Magenta	Yellow
Epson Stylus SX210 Series *1	 T0891	T0892	T0893	T0894
	 T0711	T0712	T0713	T0714
	 T0711H	-	-	-
Epson Stylus TX210 Series *2	73N (T0731N)/ 73HN (T0731HN)	73N (T0732N)	73N (T0733N)	73N (T0734N)
Epson ME Office 510	109	109	109	109

Getting more information.



Copyright © 2009 Seiko Epson Corporation. All rights reserved.
Printed in XXXXXX



411644300