

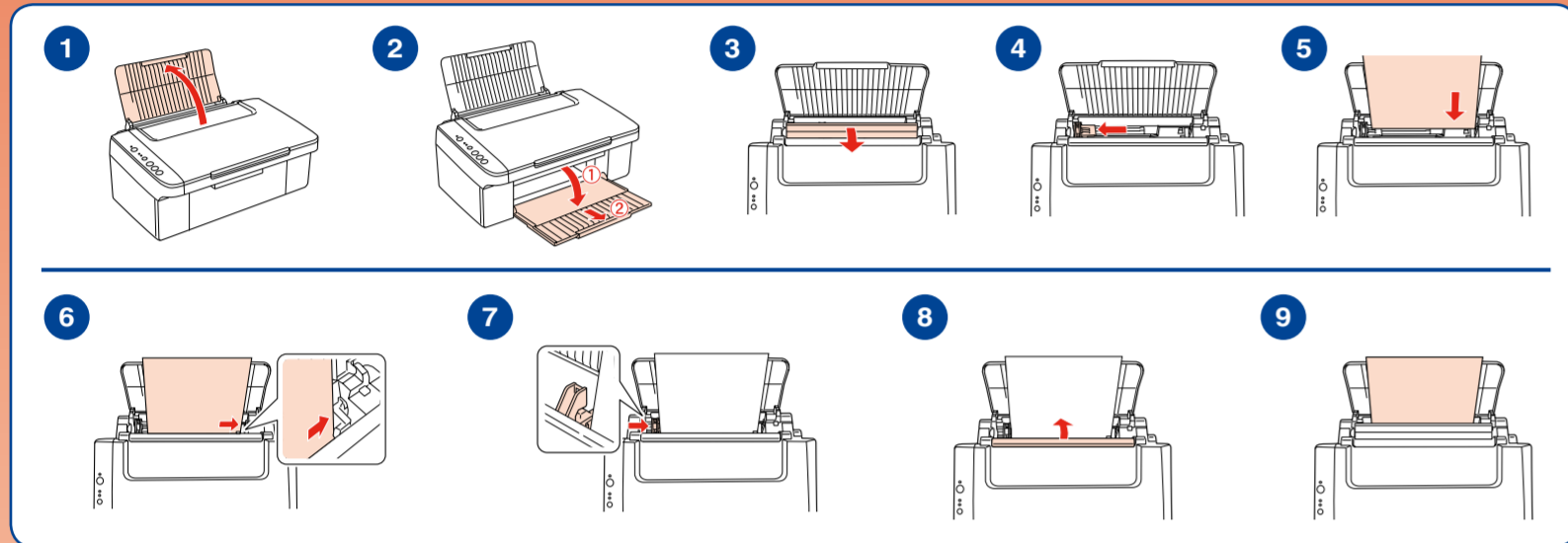
User's Guide

— for use without a computer —



Printed in XXXXXX

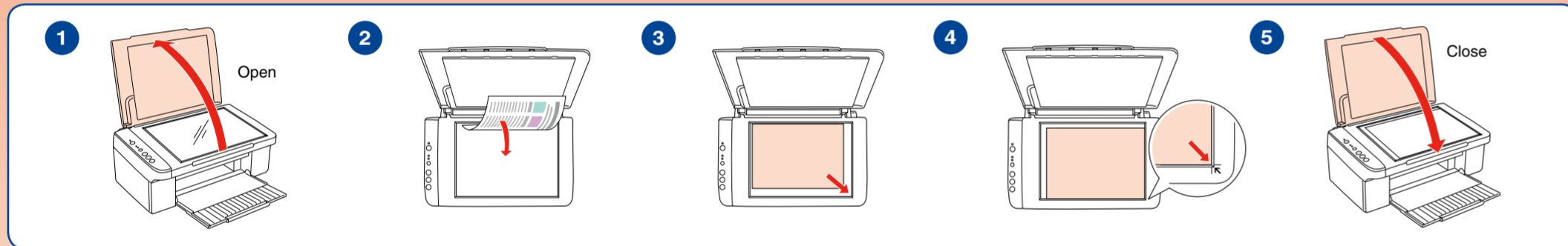
Loading Paper



Loading Capacity

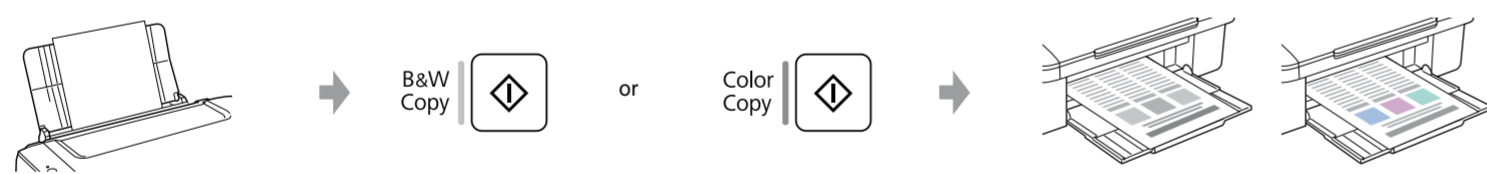
| | | |
|-----------------------------------|----|-----|
| Plain Paper | A4 | 100 |
| Epson Premium Ink Jet Plain Paper | | 80 |
| Epson Bright White Ink Jet Paper | | |

Placing an Original

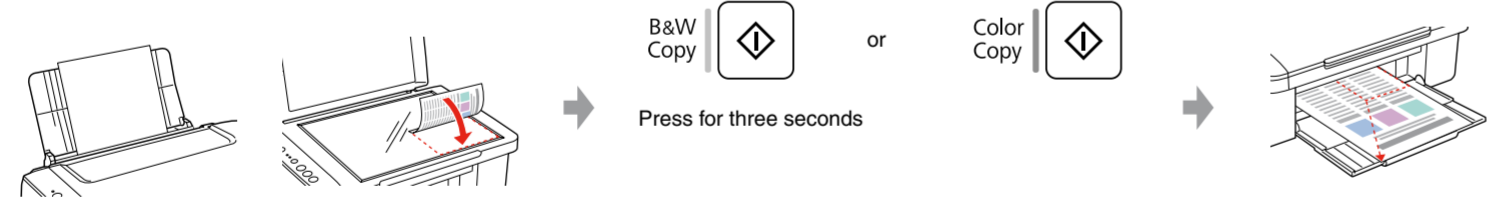


Copying

Documents



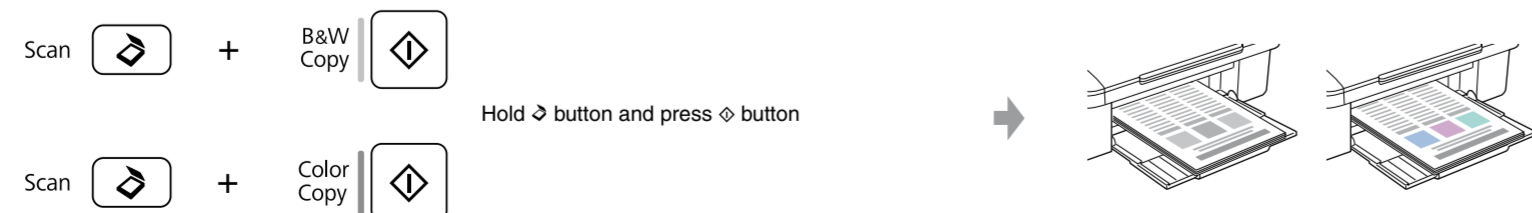
Enlarging Documents



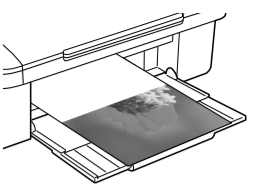
Draft Document



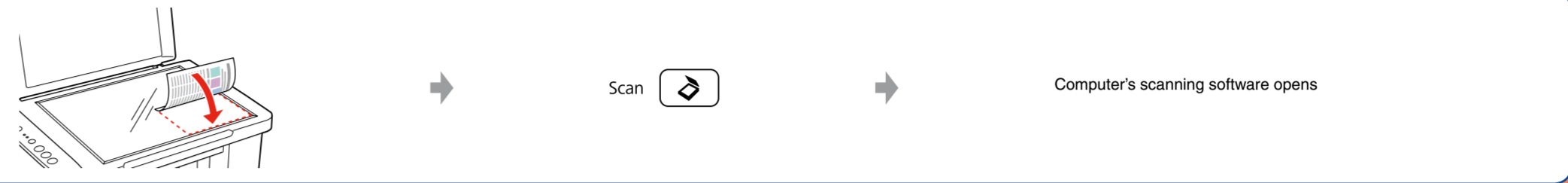
20 Sheets



Cancel

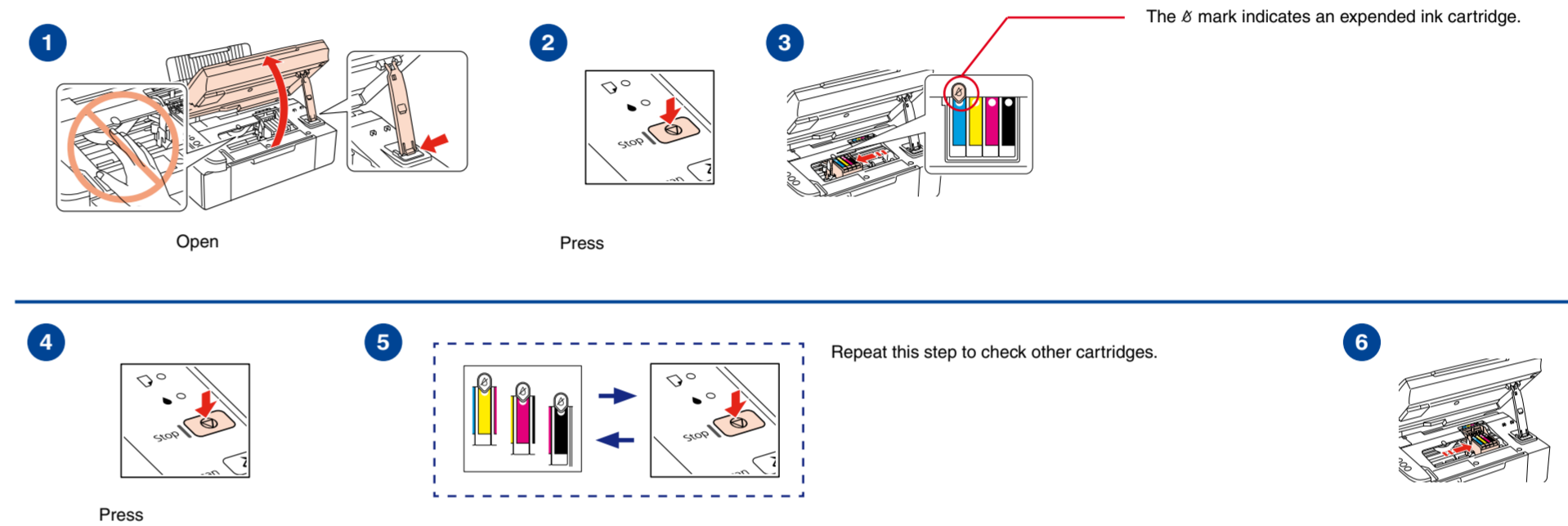


Scanning

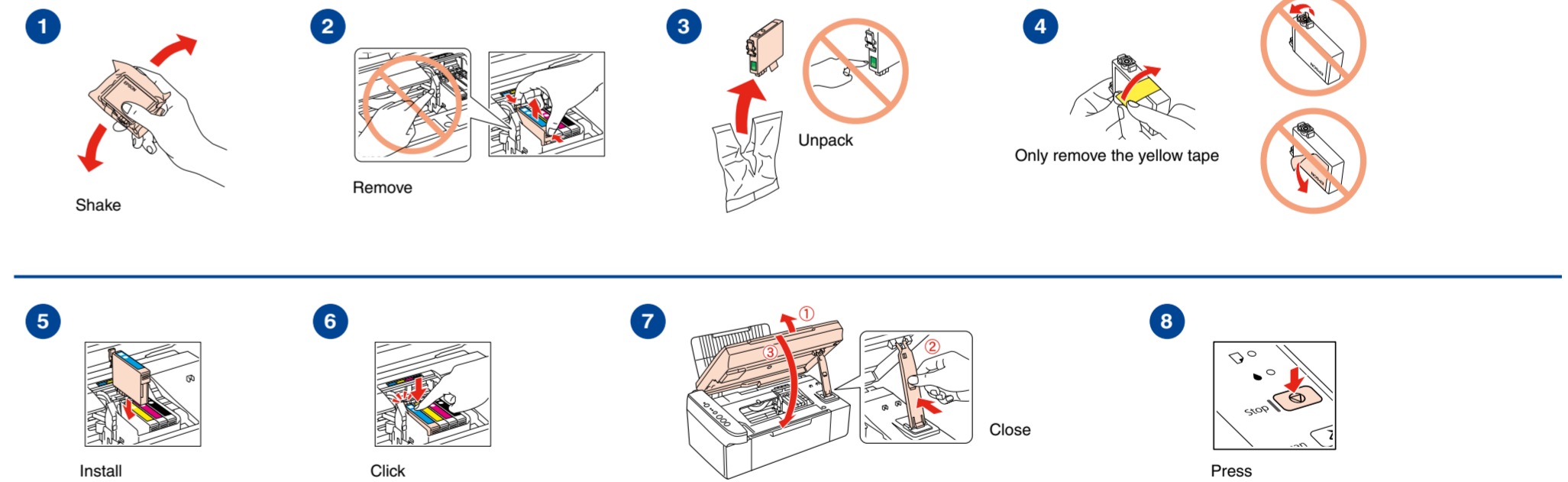


Replacing Ink Cartridges

Checking the Ink Cartridges Status

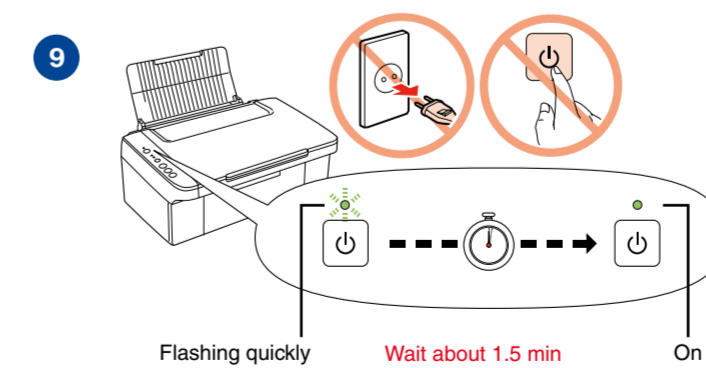


Removing and Installing Ink Cartridges



Epson Ink Cartridges

Ink cartridge part numbers vary by location. For the TX110/TX111, Epson recommends the 91N cartridges for low print usage.



| Color | Part numbers | | |
|---------|--------------|-------------|-------------|
| | SX110/SX115 | TX110/TX111 | TX117/TX119 |
| Black | T0891/T0711 | 91N/73N | T0921 |
| Cyan | T0892/T0712 | 91N/73N | T0922 |
| Magenta | T0893/T0713 | 91N/73N | T0923 |
| Yellow | T0894/T0714 | 91N/73N | T0924 |



Troubleshooting

Error Indicators

| Lights | Cause | Solution |
|---------------------|--|--|
| | | → See Loading Paper on the front page. |
| | | Prepare a new ink cartridge. |
| | | → See Replacing Ink Cartridges on the front page. |
| | | If the light is still on or flashing after you replace the cartridge, try the procedure on the right. |
| Other lights off | Sleep mode | Press any button except the button to wake the product. |
| | | → If the paper is not ejected, try the procedures below. |
| | | Turn off |
| | | Turn off |
| All lights flashing | | Turn off the printer. Open the scanner unit and remove the paper. Then turn the printer back on. If the error does not clear, contact your dealer. |
| Other lights on | Waste ink pad in the printer is saturated. | Contact your dealer to replace it. |

Copy Problems

Enlarge

Close the document cover tightly when you copy.

soft, dry cloth

Good printout

Problem with printout
→ Run a nozzle check

Banding

Faint

Colors missing

1. Nozzle Check

Turn off

Hold down the button and then press the button

2. Print Head Cleaning

Flashing

Wait

On

Try 1. Nozzle Check