
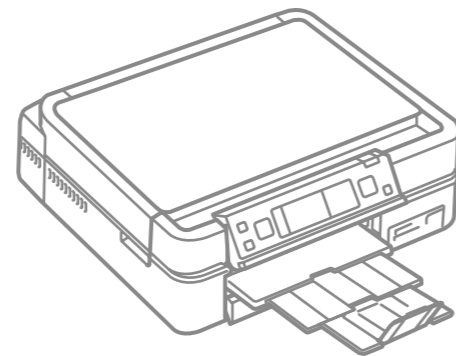


**EN** Start Here

**ID** Mulai di sini

 Warnings must be followed carefully to avoid bodily injury.  
Peringatan harus diikuti hati-hati untuk menghindari terjadinya cacat fisik.



Copyright © 2008 Seiko Epson Corporation. All rights reserved.  
Printed in XXXXXX

No. Reg: 03/DJPDN/MG/III/2001  
Tgl. 13 Maret 2001

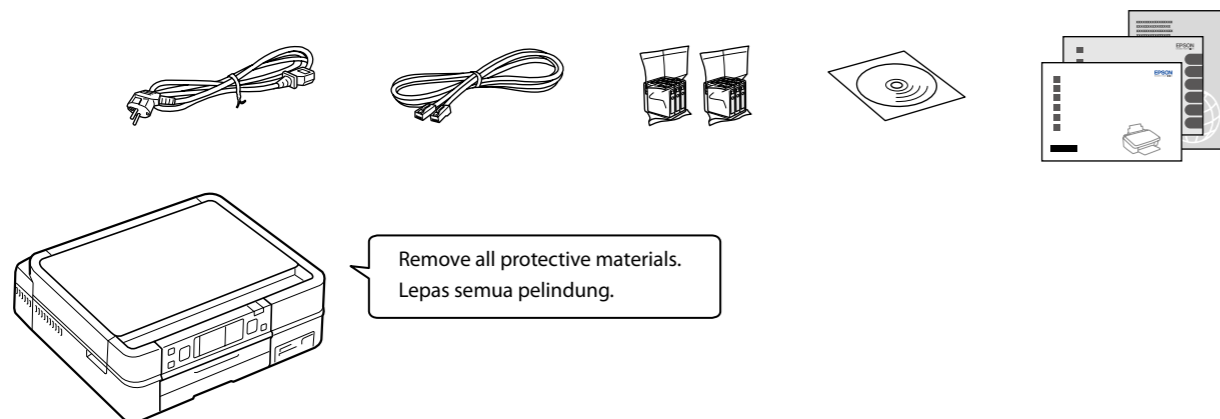


**Unpacking**  
Buka Kemasan

**1**

Contents may vary by location.  
Isi tergantung lokasi.

Do not open the ink cartridge package until you are ready to install it in the printer. The cartridge is vacuum packed to maintain its reliability.  
Jangan buka kemasan kartrid tinta sampai Anda siap memasangnya pada printer. Kartrid dikemas kedap udara untuk menjaga mutunya.

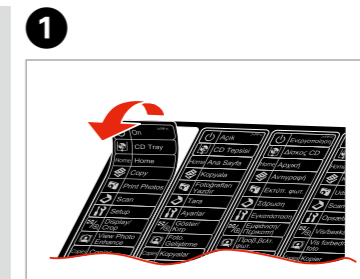


Remove all protective materials.  
Lepas semua pelindung.

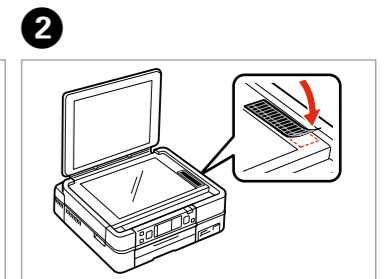
**Attaching Panel Supplement Sticker**  
Memasang Stiker Tambahan Panel

**2**

Depending on the location, the supplementary stickers may not be available.  
Tergantung pada lokasi, stiker tambahan mungkin tidak tersedia.



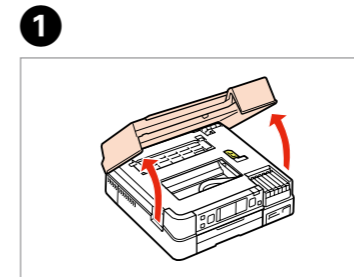
Peel off.  
Kelupas.



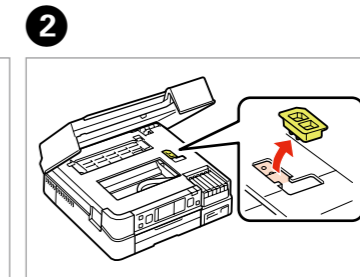
Stick.  
Tempelkan.

**Turning On**  
Menyalakan

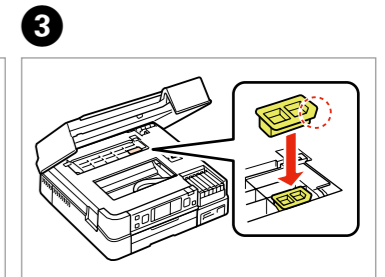
**3**



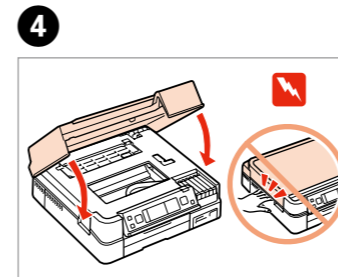
Open.  
Buka.



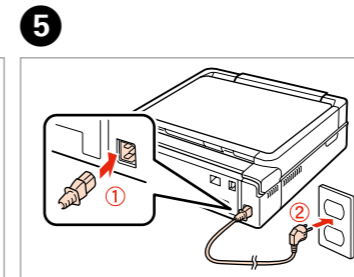
Remove.  
Keluarkan.



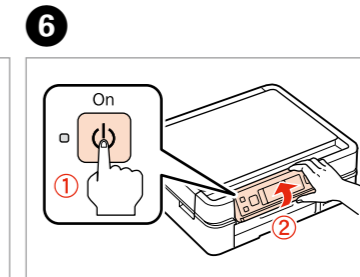
Install.  
Pasang.



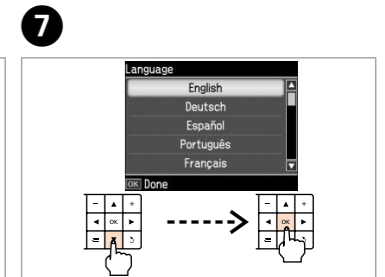
Close.  
Tutup.



Connect and plug in.  
Hubungkan dan colokkan.



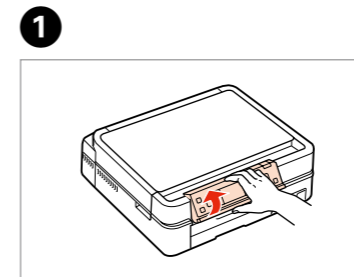
Turn on and raise.  
Nyalakan dan naikkan.



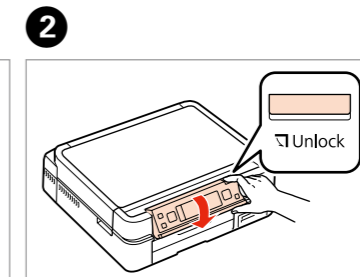
Select a Language.  
Pilih bahasa.

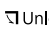
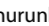
**Adjusting the Angle of the Panel**  
Mengatur Sudut Pane

**4**



Raise manually.  
Naikkan secara manual.



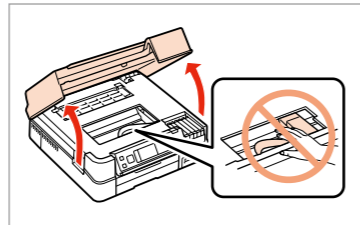
Press  **Unlock** to lower.  
Tekan  **Unlock** untuk menurunkan.

Installing the Ink Cartridges  
Memasang Kartrid Tinta

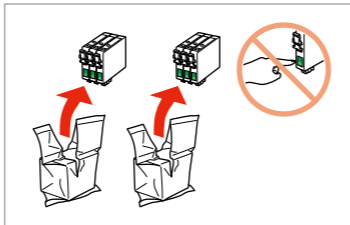
# 5

For the initial setup, make sure you use the ink cartridges that came with this printer.  
Untuk pemasangan awal, pastikan Anda menggunakan kartrid tinta yang disertakan bersama printer ini.

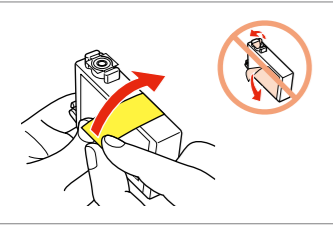
**1** Open. Buka.



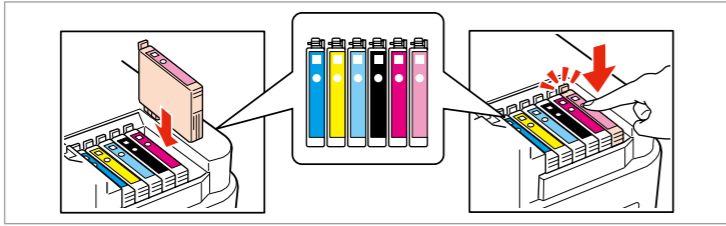
**2** Unpack. Buka kemasan.



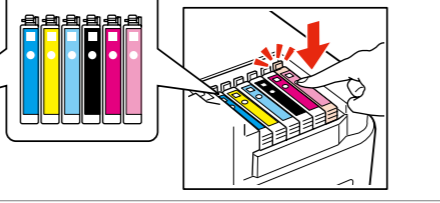
**3** Remove yellow tape. Lepas pita kuning.



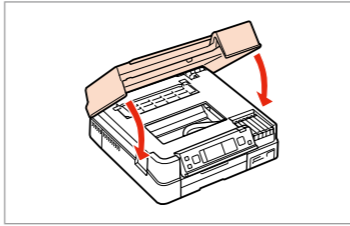
**4** Install. Pasang.



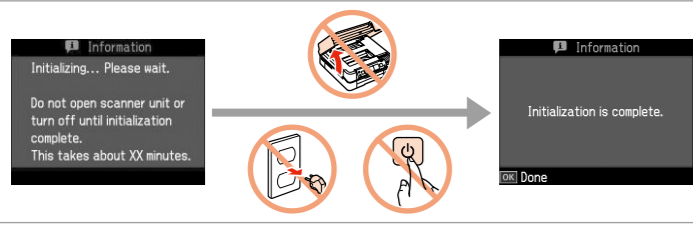
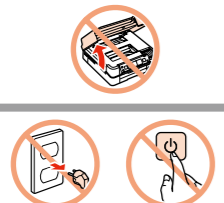
Press(click). Tekan (klik).



**5** Close. Tutup.



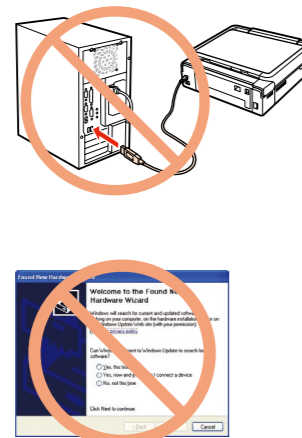
**6** Wait. Tunggu.

The initial ink cartridges will be partly used to charge the print head. These cartridges may print fewer pages compared to subsequent ink cartridges.  
Kartrid tinta dipasang pertama kali pada printer Anda sebagian akan digunakan untuk mengisi kepala cetak. Kartrid ini akan mencetak lebih sedikit halaman daripada kartrid tinta berikutnya.

Installing the Software  
Menginstal Perangkat Lunak

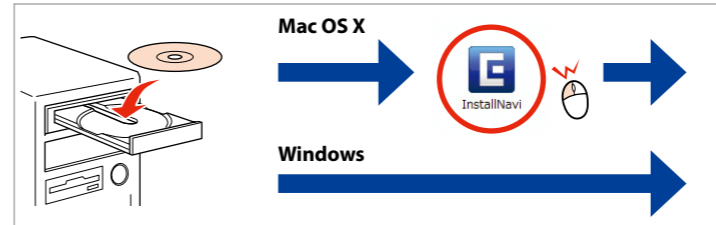
# 6




Do not connect the USB cable until you are instructed to do so.  
Jangan hubungkan kabel USB sampai Anda diminta untuk melakukannya.

If this screen appears, click **Cancel**.  
Jika layar ini muncul, klik **Cancel** (Batal).

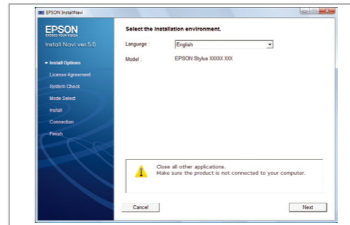
**1** Insert. Masukkan.



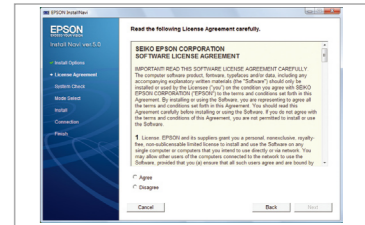
Windows: No installation screen? →  
Windows: Tidak ada layar instalasi? →



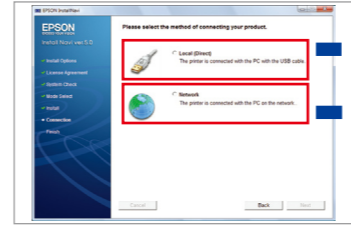
**2** Select a language. Pilih bahasa.



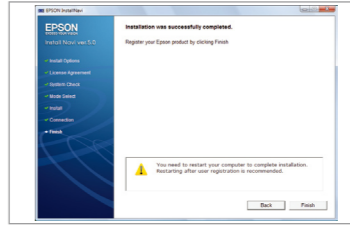
**3** Follow the instructions. Ikuti petunjuk.



**4** Select a connection type and follow the instructions.  
Pilih jenis koneksi dan ikuti petunjuknya.



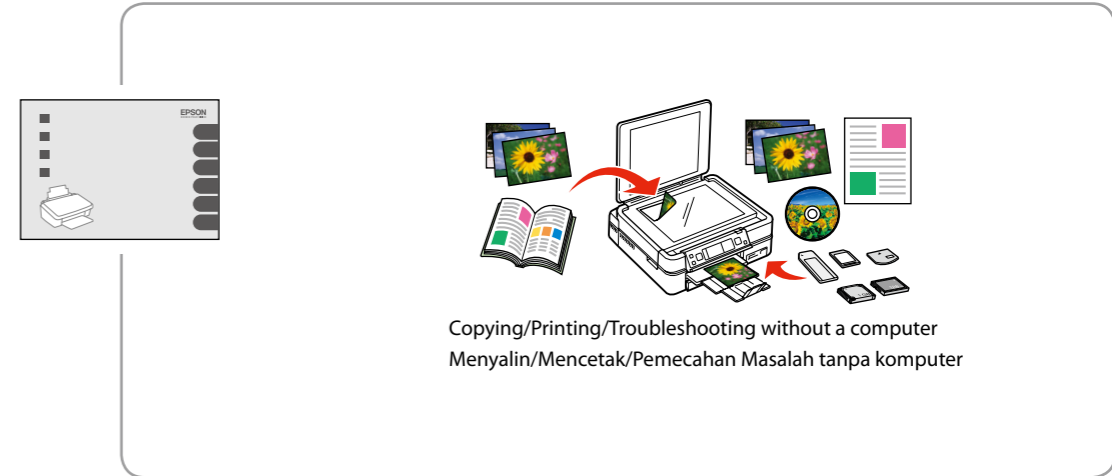
**5** Installation complete. Instalasi selesai.



Getting More Information  
Masukkan kertas dengan sisi cetak menghadap atas



Copying/Printing/Troubleshooting without a computer  
Menyalin/Mencetak/Pemecahan Masalah tanpa komputer



Printing/Scanning/Networking/Troubleshooting with a computer  
Mencetak/Memindai/Jaringan/Pemecahan Masalah dengan komputer

