
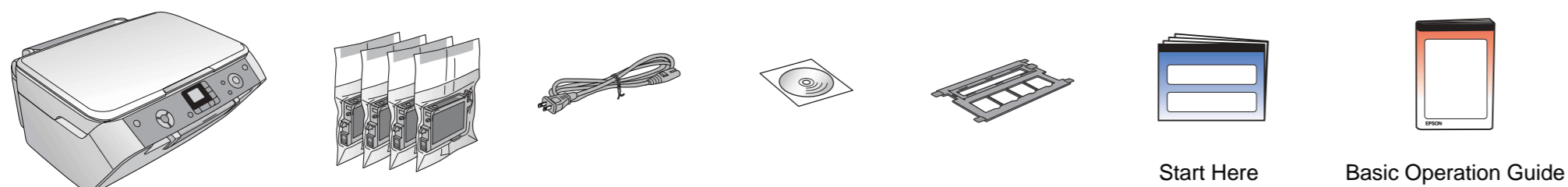


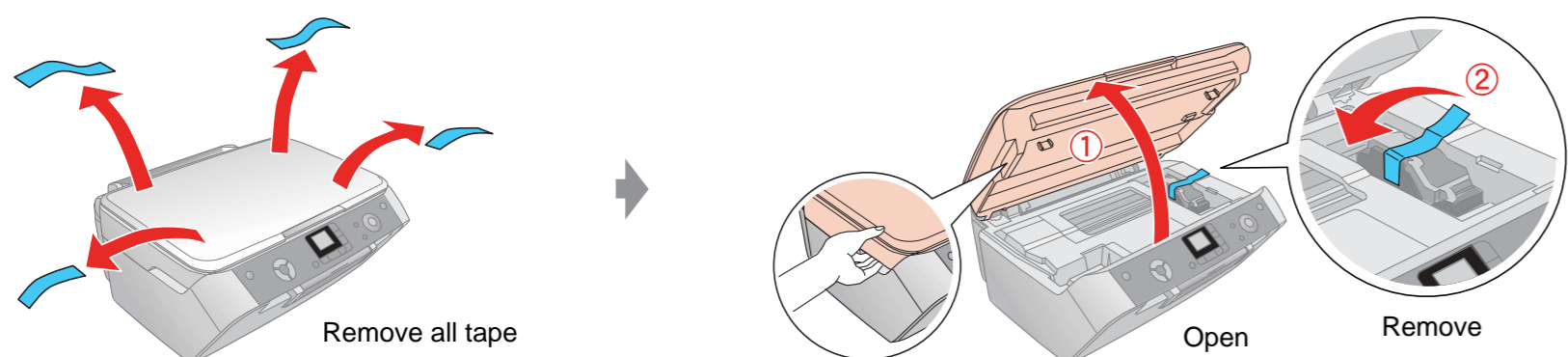
Start Here

 : Warnings must be followed carefully to avoid bodily injury.

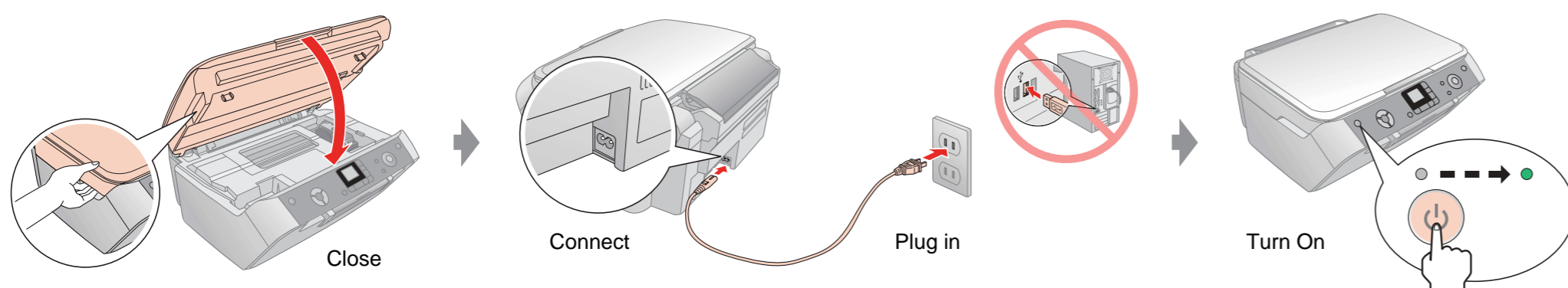
1. Unpacking



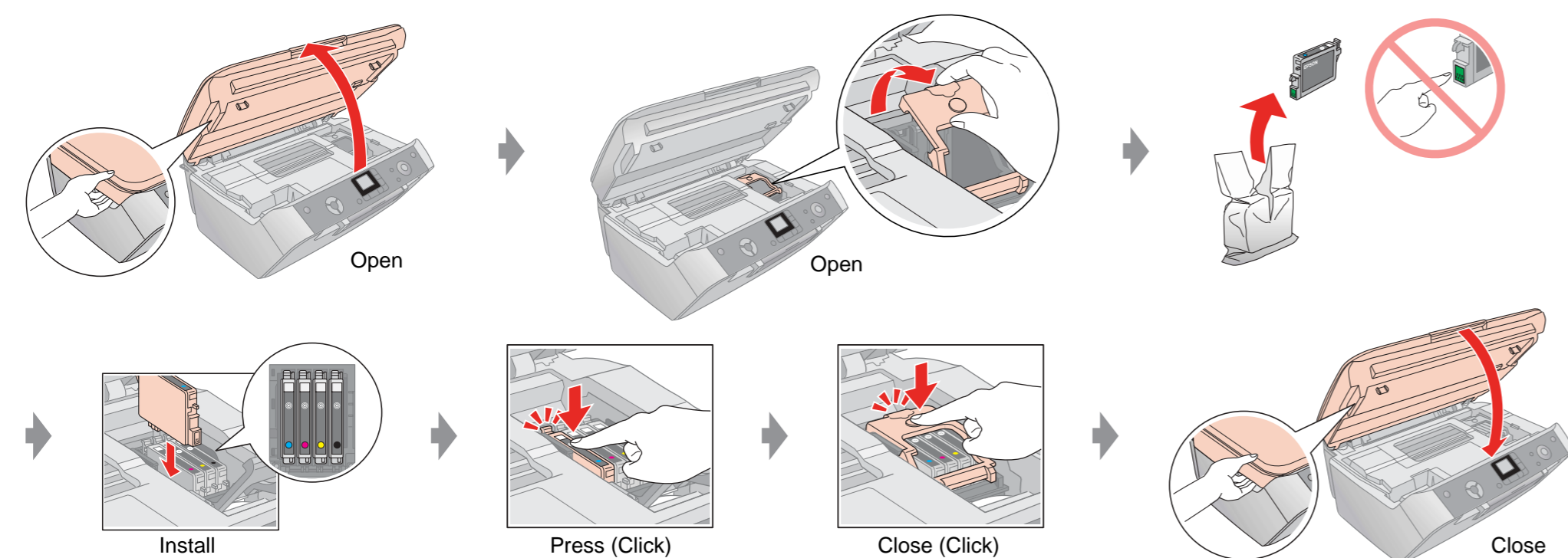
2. Removing Protective Tape



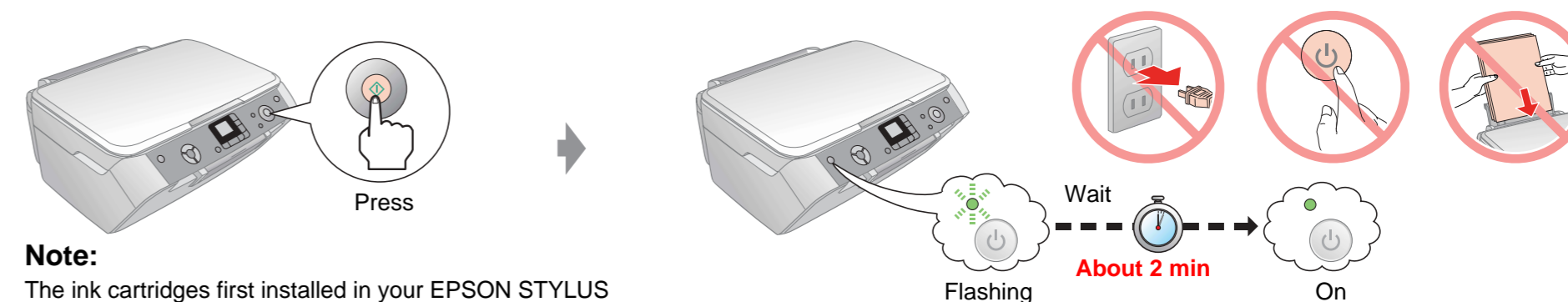
3. Turning On



4. Installing Ink Cartridges

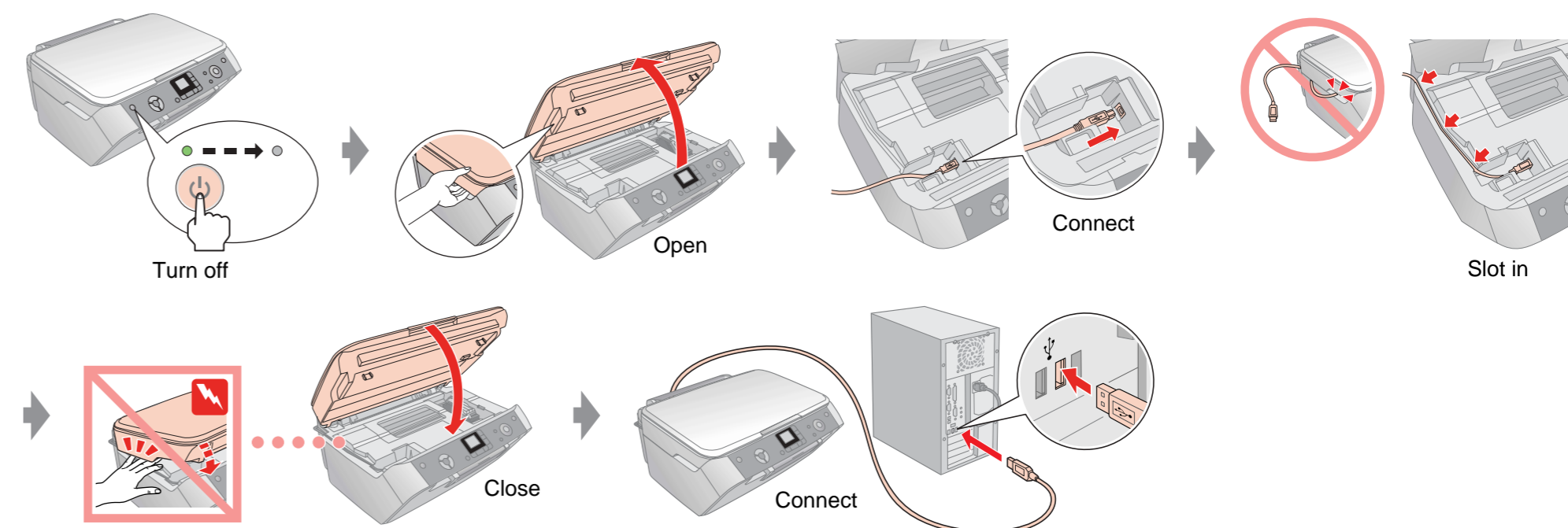


5. Ink Charging

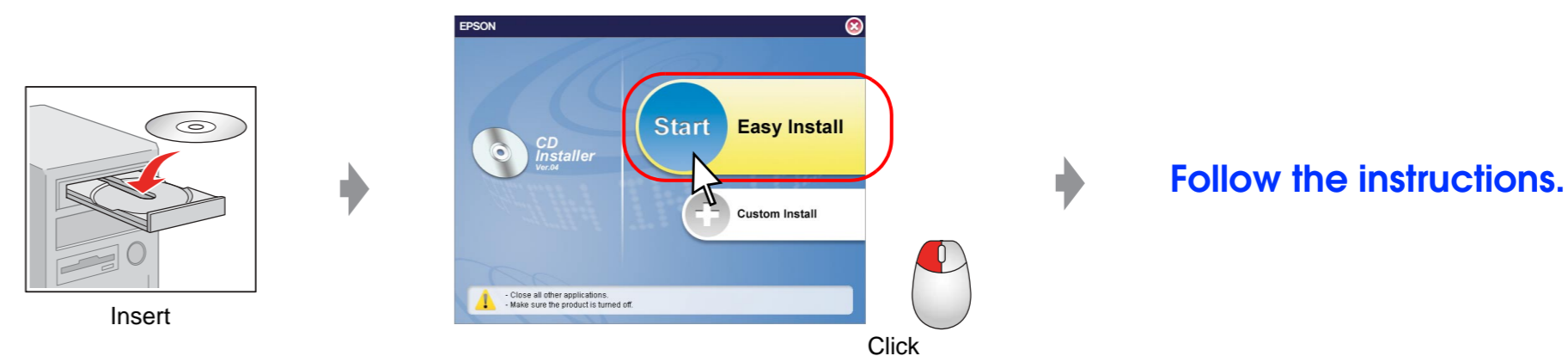


Note:
The ink cartridges first installed in your EPSON STYLUS PHOTO RX will be partly used to charge the print head. Subsequent ink cartridges will last for their full rated life.

6. Installing the Software Connecting your computer

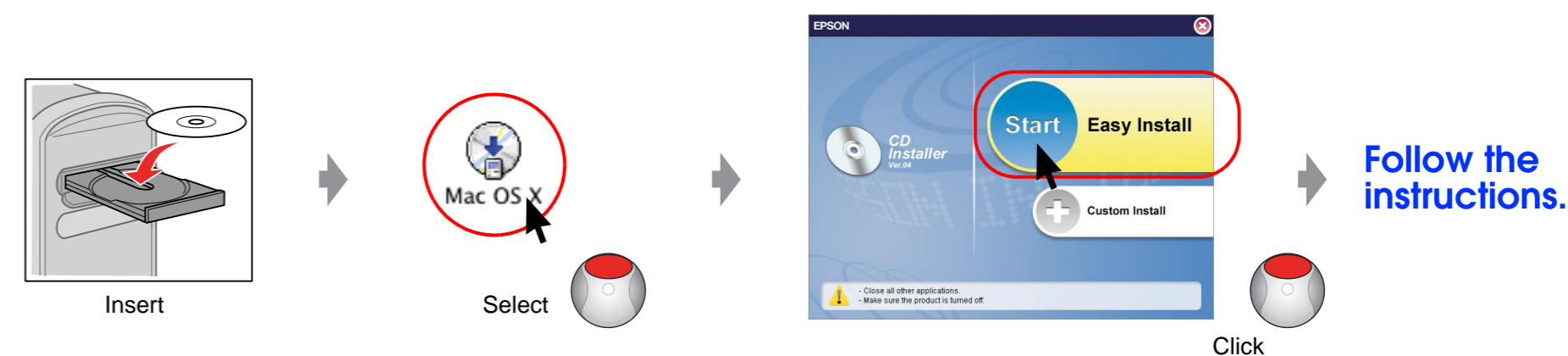


For Windows



No dialog box? → Double-click CD-ROM icon.

For Mac OS X

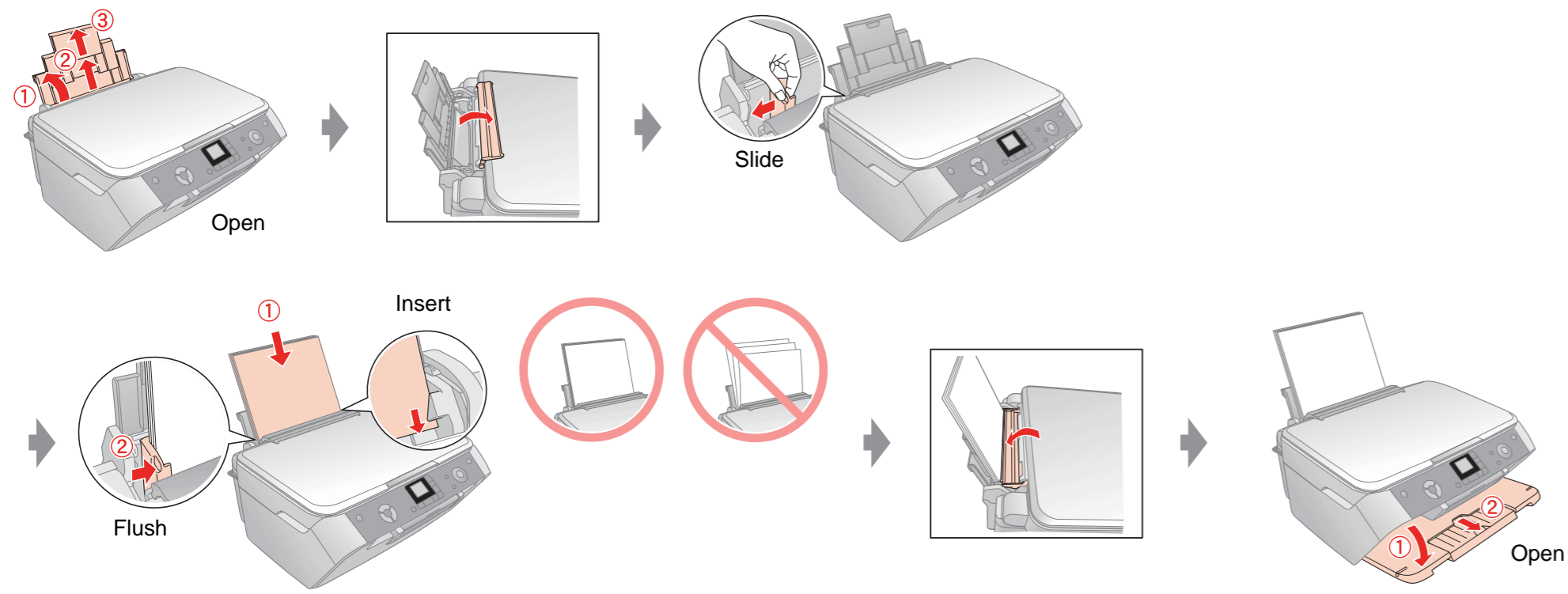


For Mac OS 9, download the driver. → <http://www.epson.com>

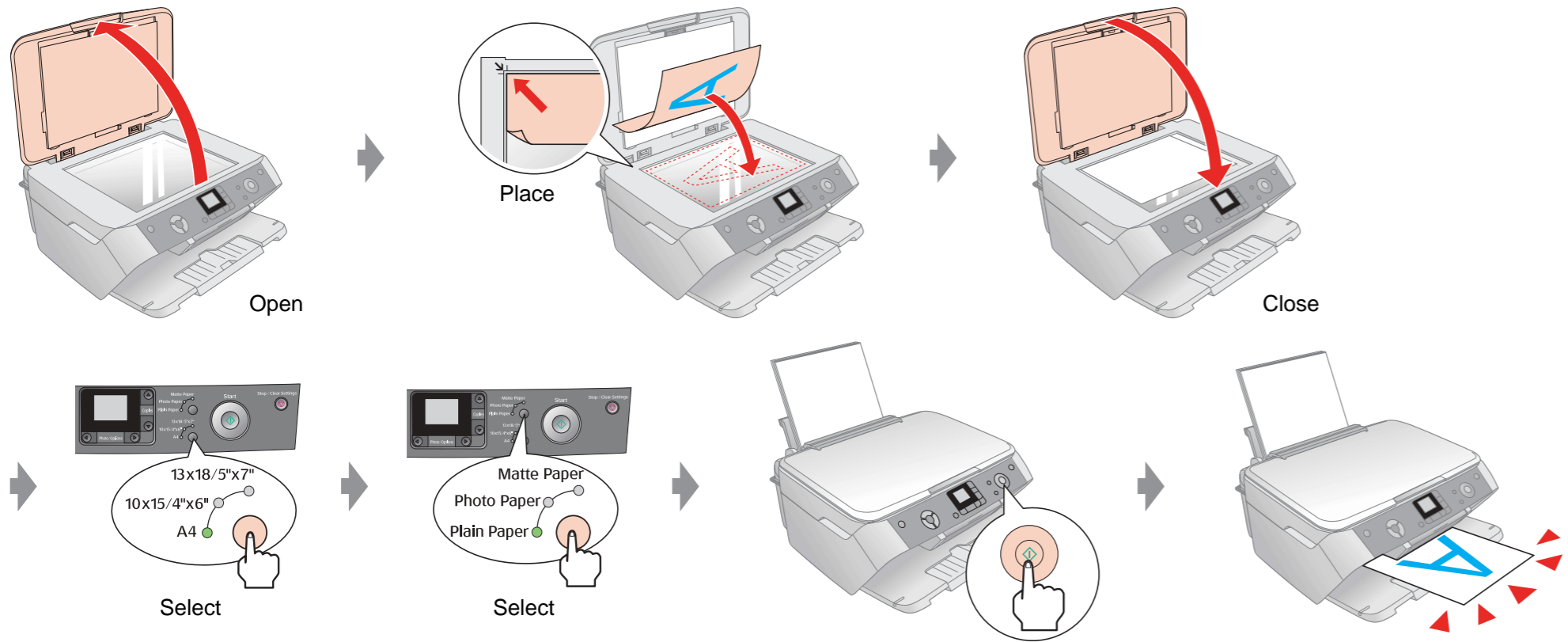


Making Copies

Loading Paper

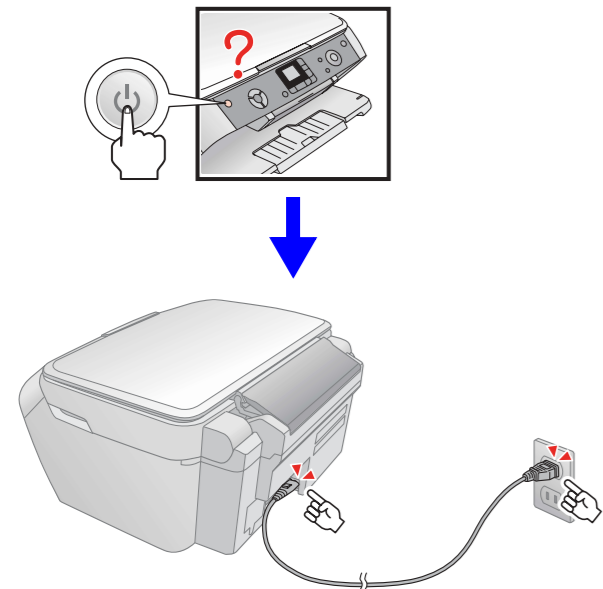


Copying

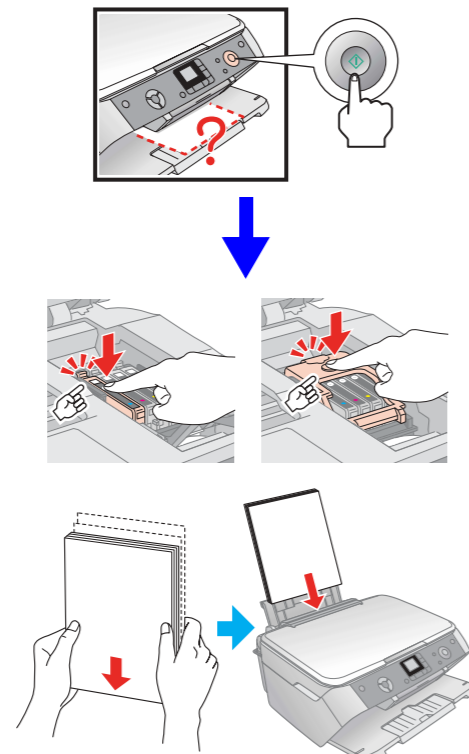


Troubleshooting

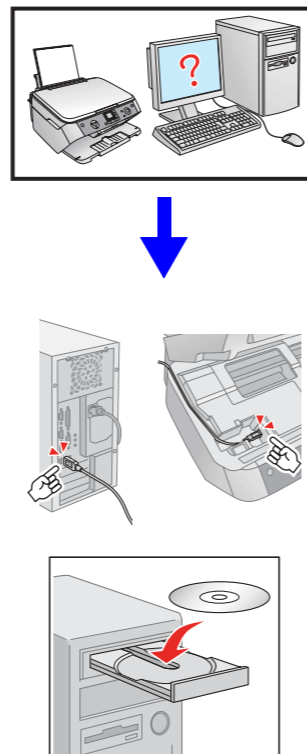
Does not turn on



Does not print

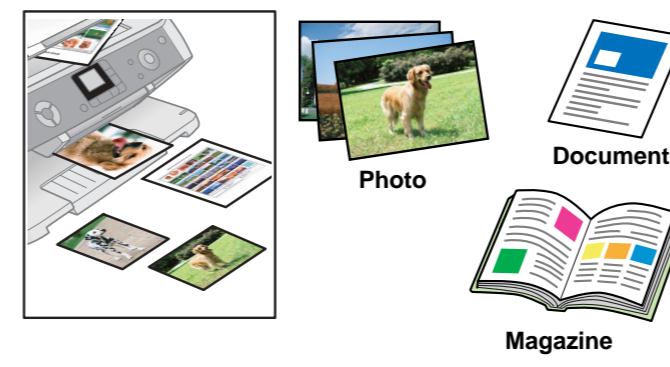


Does not recognize

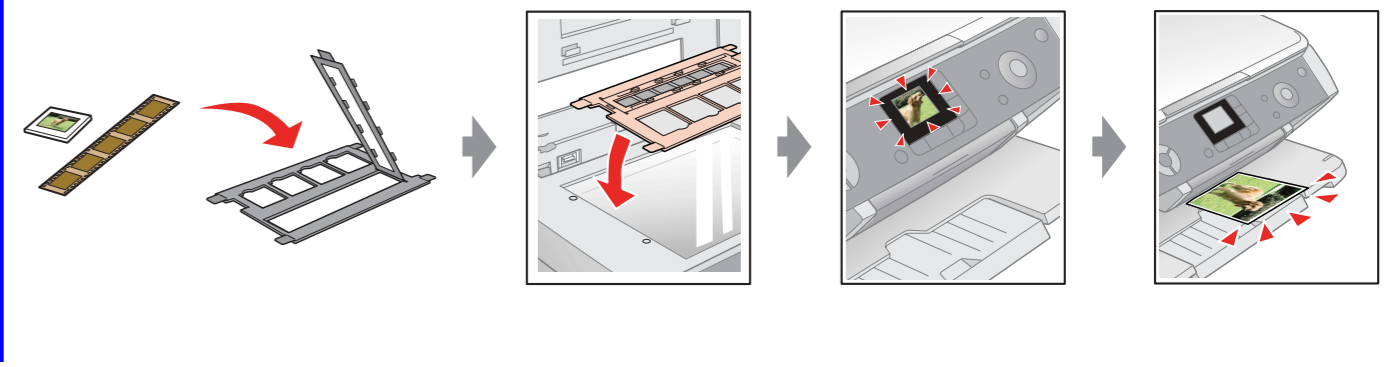


Features

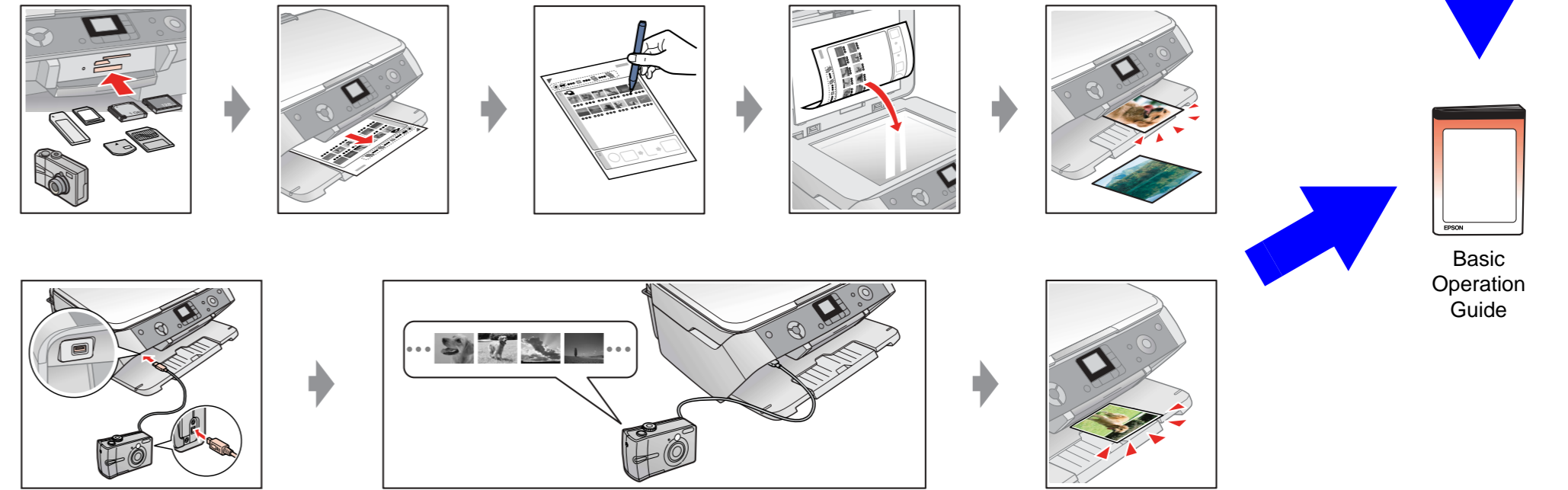
Copying



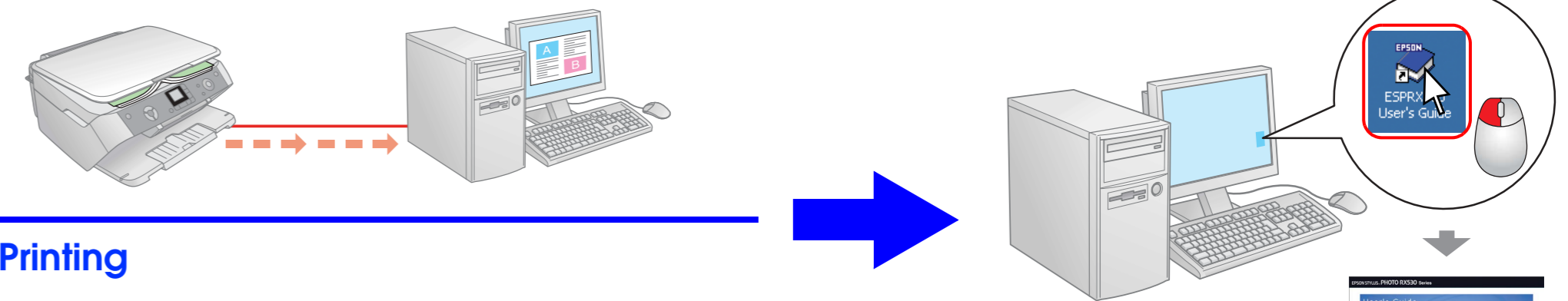
Printing from Films



Memory Card and Camera Printing



Scanning



Printing



Storing Film holder

