

PLQ-20/PLQ-20M/PLQ-20D/PLQ-20DM Start Here



Unpacking

1

Remove all protective tapes

The shape of the plug may vary by location.

Installing the Ribbon Cartridge

2

Caution: Do not touch the white cable inside the printer.

Open

Remove

Push

Make sure that all of the protective materials in the printer are removed.

Slide the print head to the middle of the printer by hand.

Insert until it clicks

Continued ➡

Hold both sides of the ribbon guide and pull it down until it is out of the cartridge.

Put the ribbon guide at the bottom of the print head and push it up until it clicks into place.

Tense

Pull

Caution: The ribbon should not be twisted or creased.

Connecting the Printer to Your Computer

3

Caution: The interface cable connectors have only one correct orientation. Make sure the orientation of the connector is correct before inserting it into the appropriate port.

USB

Connect firmly

Connect firmly

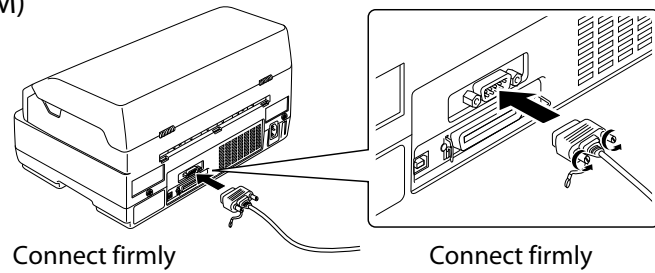
Parallel (PLQ-20/PLQ-20M only)

Connect firmly

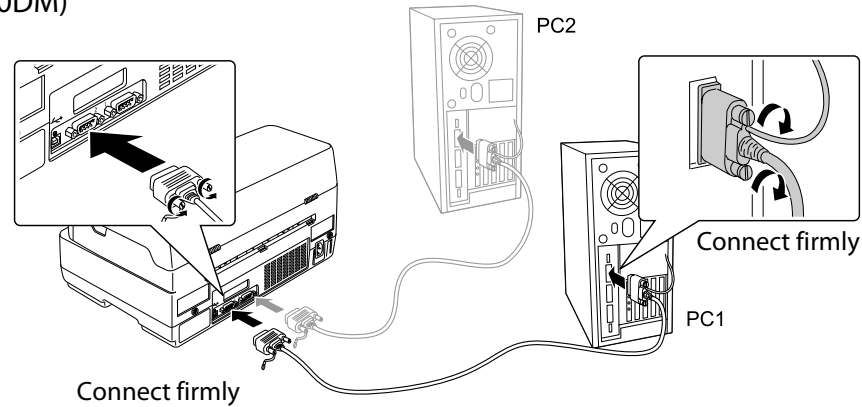
Connect firmly

Continued on back ➡

Serial (PLQ-20/PLQ-20M)

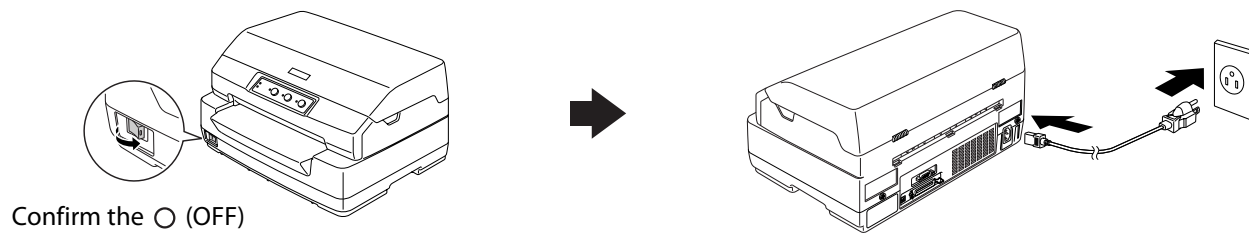


Serial (PLQ-20D/PLQ-20DM)



Connecting the Power Cord

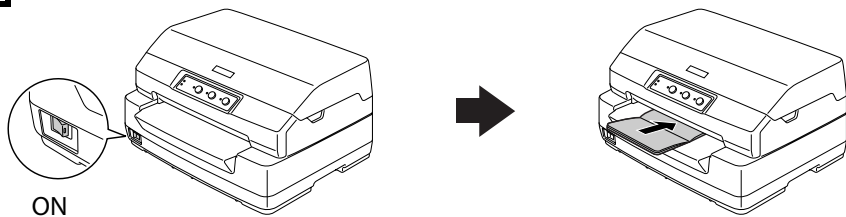
4



Confirm the ○ (OFF)

Loading Paper

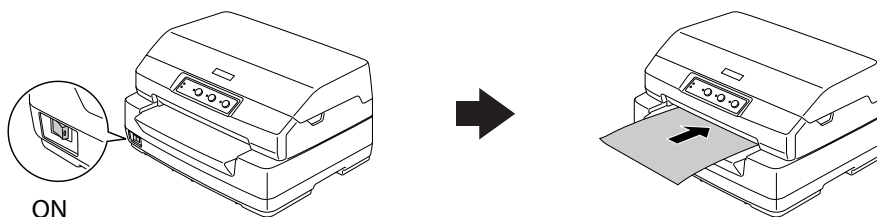
5 Passbooks



ON

Open your passbook to the page to be printed. Then insert the passbook printable side up into the front slot until the top part of it reaches the roller inside. The printer loads it automatically to the correct position and the passbook is ready to be printed.

Single Sheets

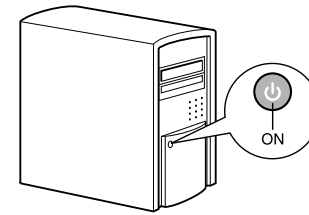


ON

Insert a single sheet printable side up into the front slot until the top part of the paper reaches the roller inside. The printer loads the paper automatically to the correct position and the paper is ready to be printed.

Downloading the Printer Software

6



<http://www.epson.com>

Download the printer driver and EPSON Status Monitor 3, and install them.

Getting More Information

7

Now setup is finished and the printer is ready.

For detailed information about the printer and troubleshooting, refer to the User's Guide.



Open by double-clicking or copy the language folder

If you cannot find the information you require in the User's Guide, visit our Web site:

<http://www.epson.com>

No part of this publication may be reproduced, stored in a retrieval system, or transmitted in any form or by any means, electronic, mechanical, photocopying, recording, or otherwise, without the prior written permission of Seiko Epson Corporation. No patent liability is assumed with respect to use of the information contained herein. Neither is any liability assumed for damages resulting from the use of the information contained herein.

Neither Seiko Epson Corporation nor its affiliates shall be liable to the purchaser of this product or third parties for damages, losses, costs, or expenses incurred by the purchaser or third parties as a result of: accident, misuse, or abuse of this product or unauthorized modifications, repairs, or alterations to this product, or (excluding the U.S.) failure to strictly comply with Seiko Epson Corporation's operating and maintenance instructions.

Seiko Epson Corporation and its affiliates shall not be liable against any damages or problems arising from the use of any options or any consumable products other than those designated as Original Epson Products or Epson Approved Products by Seiko Epson Corporation.

EPSON is a registered trademark of Seiko Epson Corporation.

Microsoft®, Windows®, and Windows Vista® are registered trademarks of Microsoft Corporation in the United States and/or other countries.

General Notice: Other product names used herein are for identification purposes only and may be trademarks of their respective owners. Epson disclaims any and all rights in those marks.

The contents of this manual are subject to change without notice.

Copyright © 2012 Seiko Epson Corporation. All rights reserved.

Printed in XXXXXX

Continued ↗