

LX-310 Start Here



EPSON
EXCEED YOUR VISION

Unpacking

1

It may come attached to the printer in some countries. The shape of the plug may vary by location.

Hook and push

Attach the paper tension unit

Attach Close

Assembling the Printer

2

Pull upright and push firmly

Attach

Attach

Remove Open

Make sure that all of the protective materials in the printer are removed

Remove Push and hold up

Do not touch the white cable inside the printer

Tense the ribbon

Remove the paper tension unit

Confirm the print head is in the middle

Insert until it clicks

Insert the ribbon between the print head and carriage

Caution: Do not insert the ribbon on the far side of the carriage.

<correct> <incorrect>

Tense carriage

Continued

Connecting the Power Cord

3

Confirm the **OFF**

Plug in

Connect

Connecting the Printer to Your Computer

4 **Caution:**

- The interface cable connectors have only one correct orientation. Make sure the orientation of the connector is correct before inserting it into the appropriate port.
- Do not connect or disconnect the printer while it is turning on.

USB

Connect firmly

Connect firmly

Connect firmly and fasten

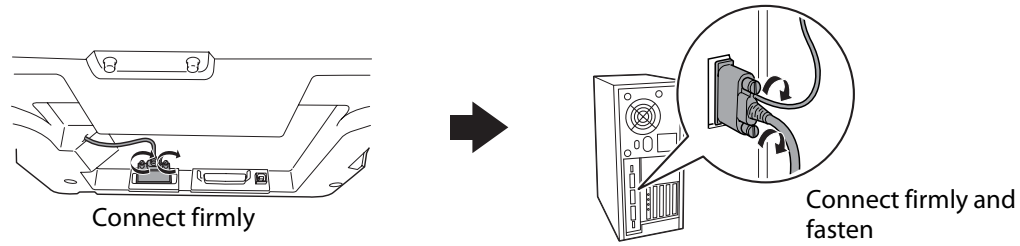
IEEE1284 (PARALLEL)

Connect firmly

Connect firmly and fasten

Continued on back

EIA-232D (SERIAL)

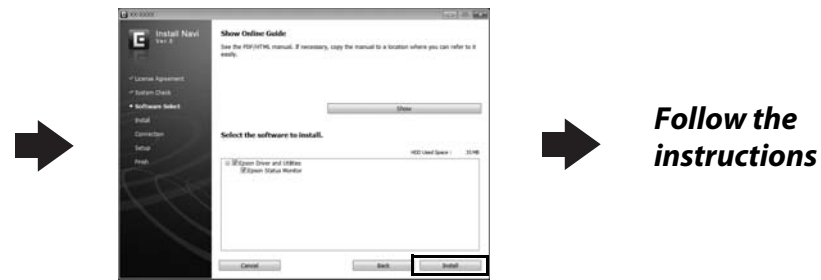
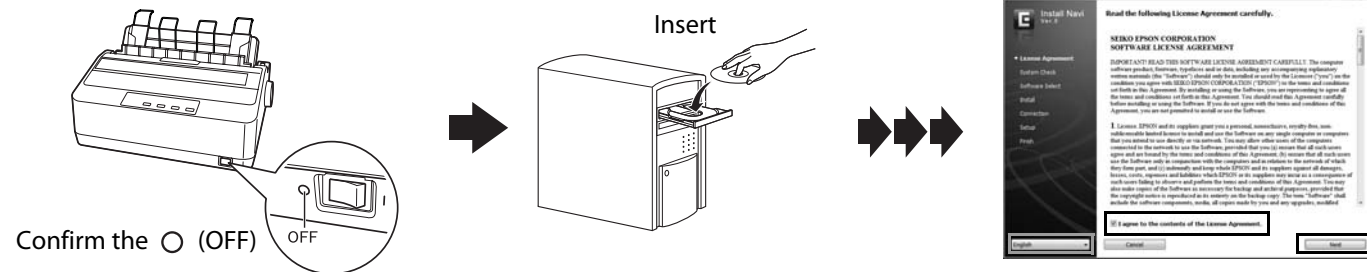


Installing the Printer Software

5 Windows 8



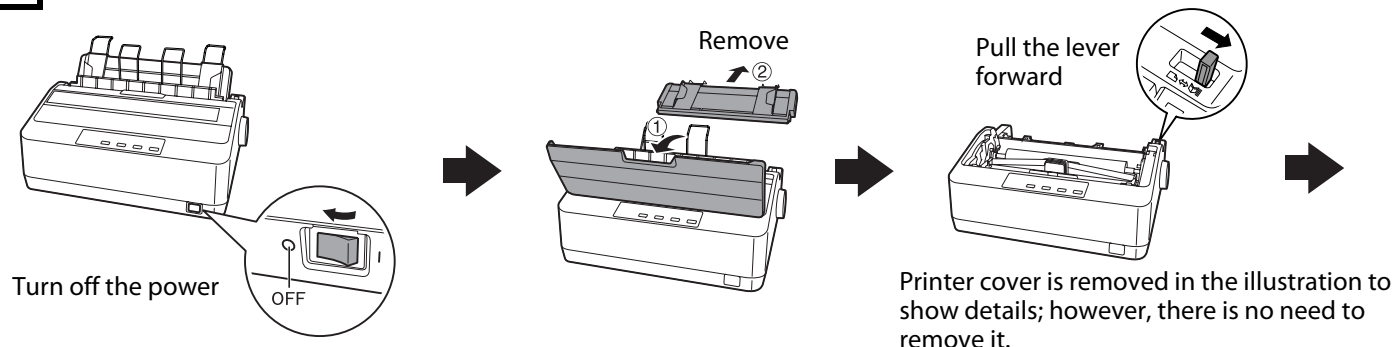
Windows 7/Vista/XP/2000



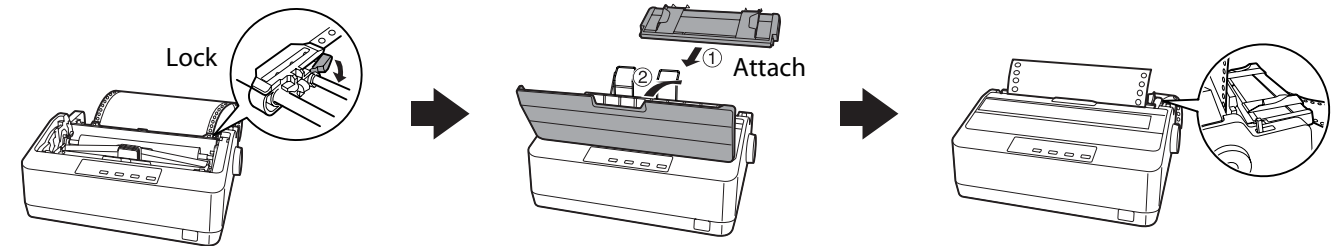
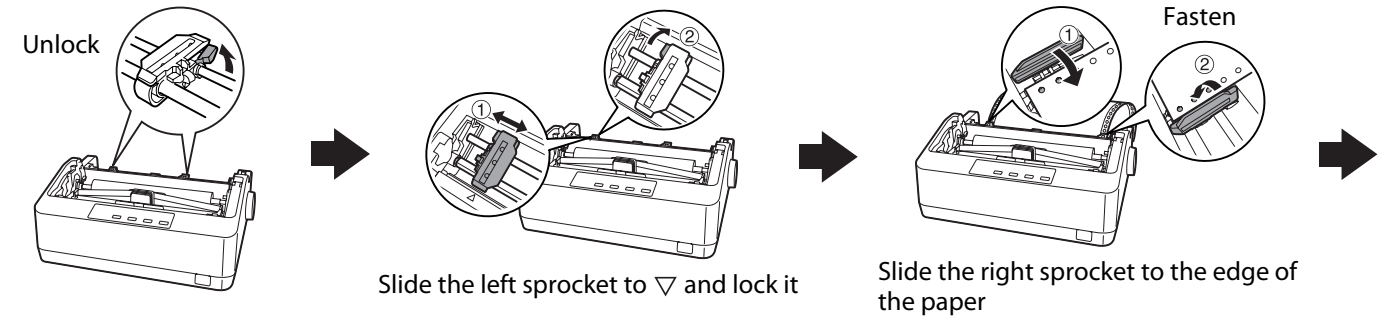
Note: Installing the printer software may require administrator privileges. If you have problems, ask your administrator for more information.

Loading Paper

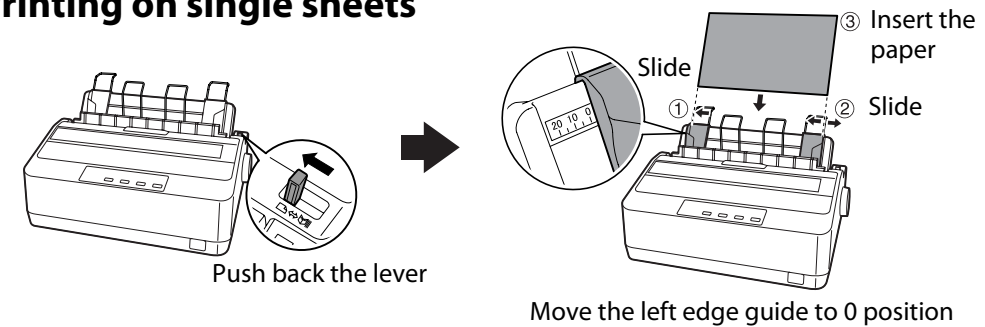
6 Printing on continuous paper



Continued



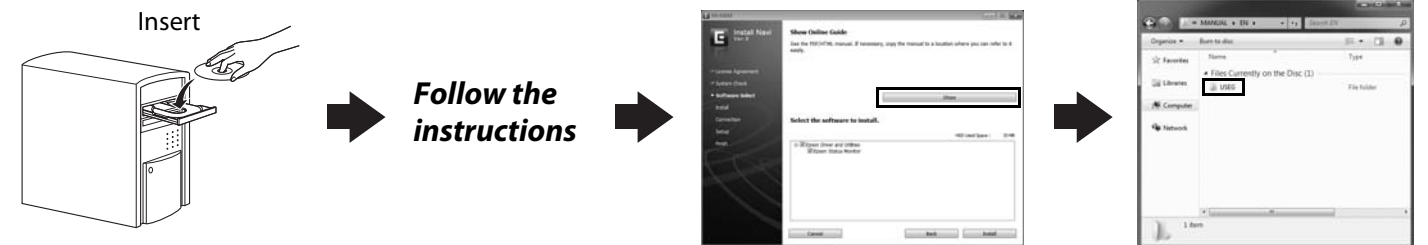
Printing on single sheets



Getting More Informations

7 Now setup is finished and the printer is ready.

For detailed information about the printer and troubleshooting, refer to the User's Guide.



If you cannot find the information you require in the User's Guide, visit our Web site:
<http://www.epson.com>

No part of this publication may be reproduced, stored in a retrieval system, or transmitted in any form or by any means, electronic, mechanical, photocopying, recording, or otherwise, without the prior written permission of Seiko Epson Corporation. No patent liability is assumed with respect to use of the information contained herein. Neither is any liability assumed for damages resulting from the use of the information contained herein. Neither Seiko Epson Corporation nor its affiliates shall be liable to the purchaser of this product or third parties for damages, losses, costs, or expenses incurred by the purchaser or third parties as a result of: accident, misuse, or abuse of this product or unauthorized modifications, repairs, or alterations to this product, or (excluding the U.S.) failure to strictly comply with Seiko Epson Corporation's operating and maintenance instructions. Seiko Epson Corporation and its affiliates shall not be liable against any damages or problems arising from the use of any options or any consumable products other than those designated as Original Epson Products or Epson Approved Products by Seiko Epson Corporation. EPSON and EXCEED YOUR VISION are registered trademarks of Seiko Epson Corporation. Microsoft®, Windows®, and Windows Vista® are registered trademarks of Microsoft Corporation in the United States and/or other countries. **General Notice:** Other product names used herein are for identification purposes only and may be trademarks of their respective owners. Epson disclaims any and all rights in those marks. The contents of this manual are subject to change without notice. Copyright © 2013 Seiko Epson Corporation. All rights reserved. Printed in XXXXXX