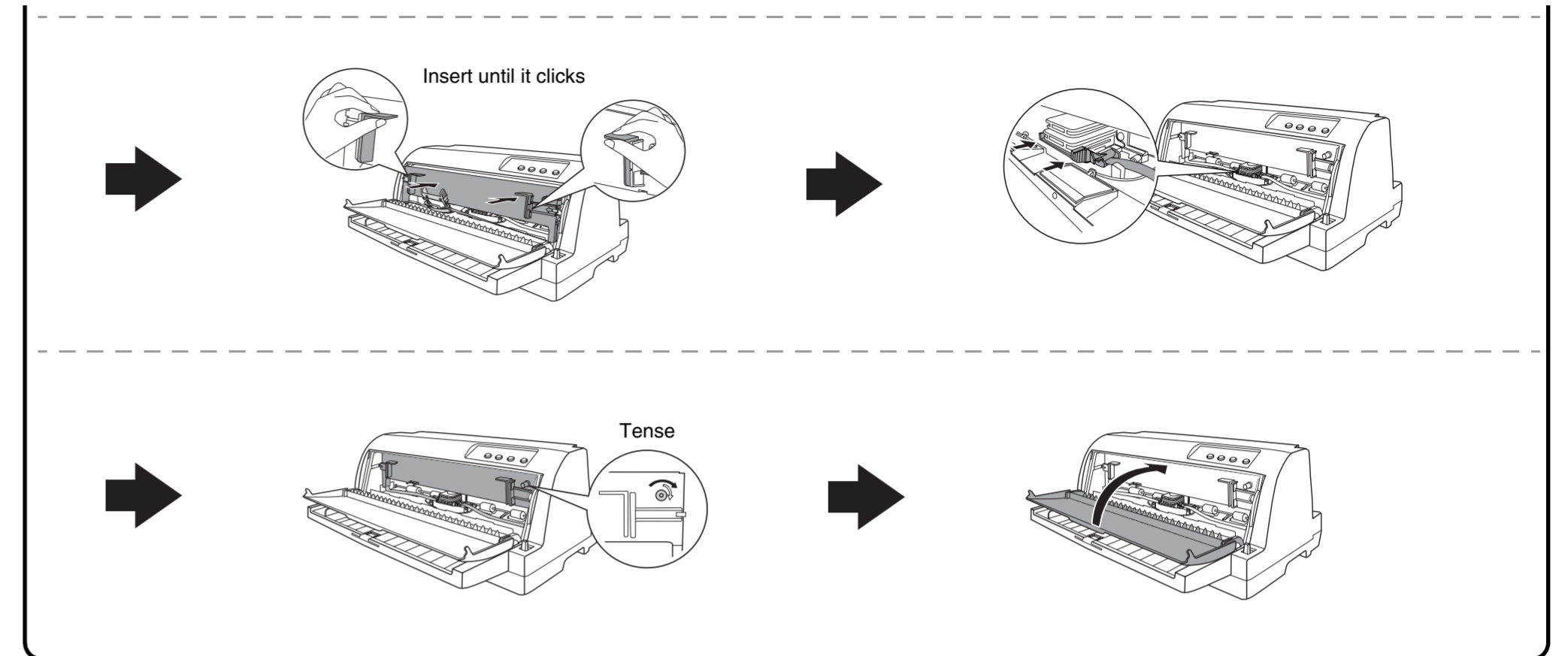
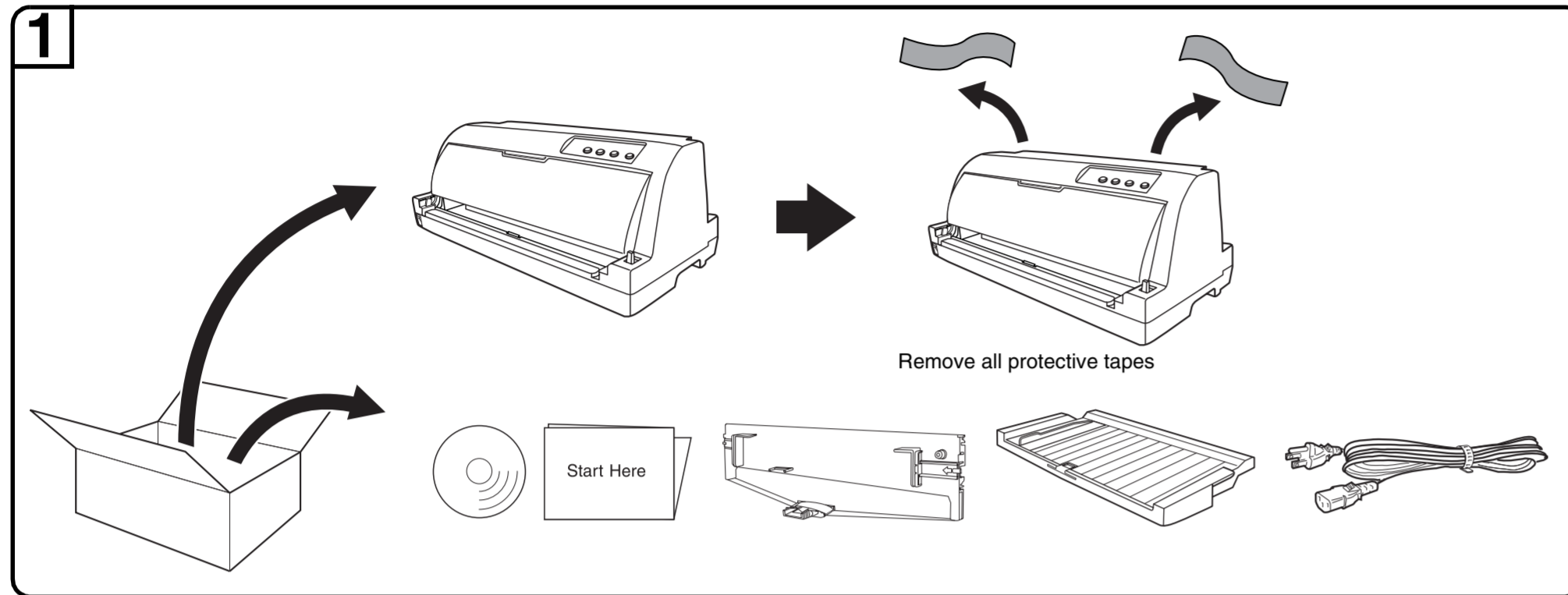


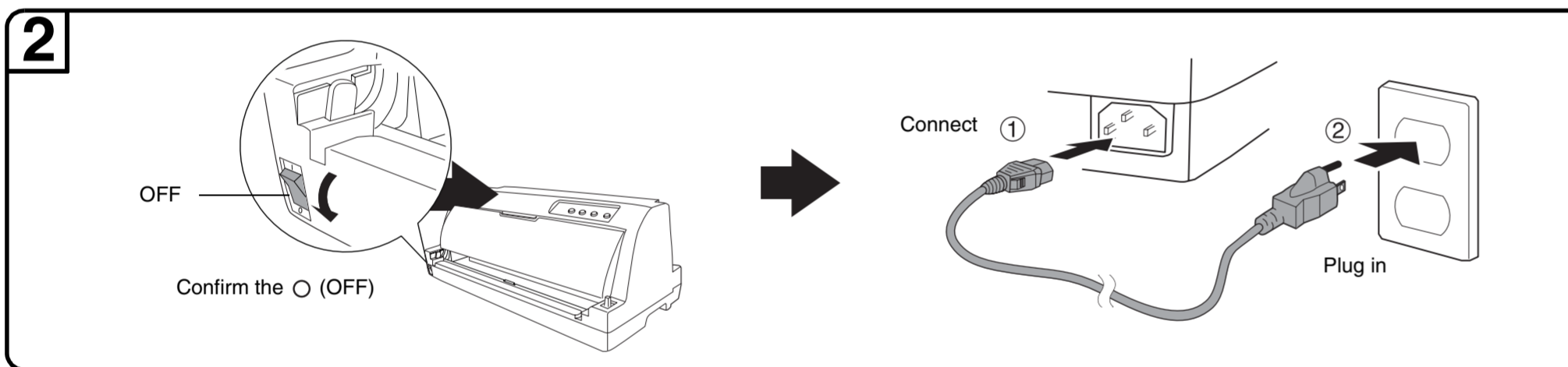
# LQ-690 Start Here



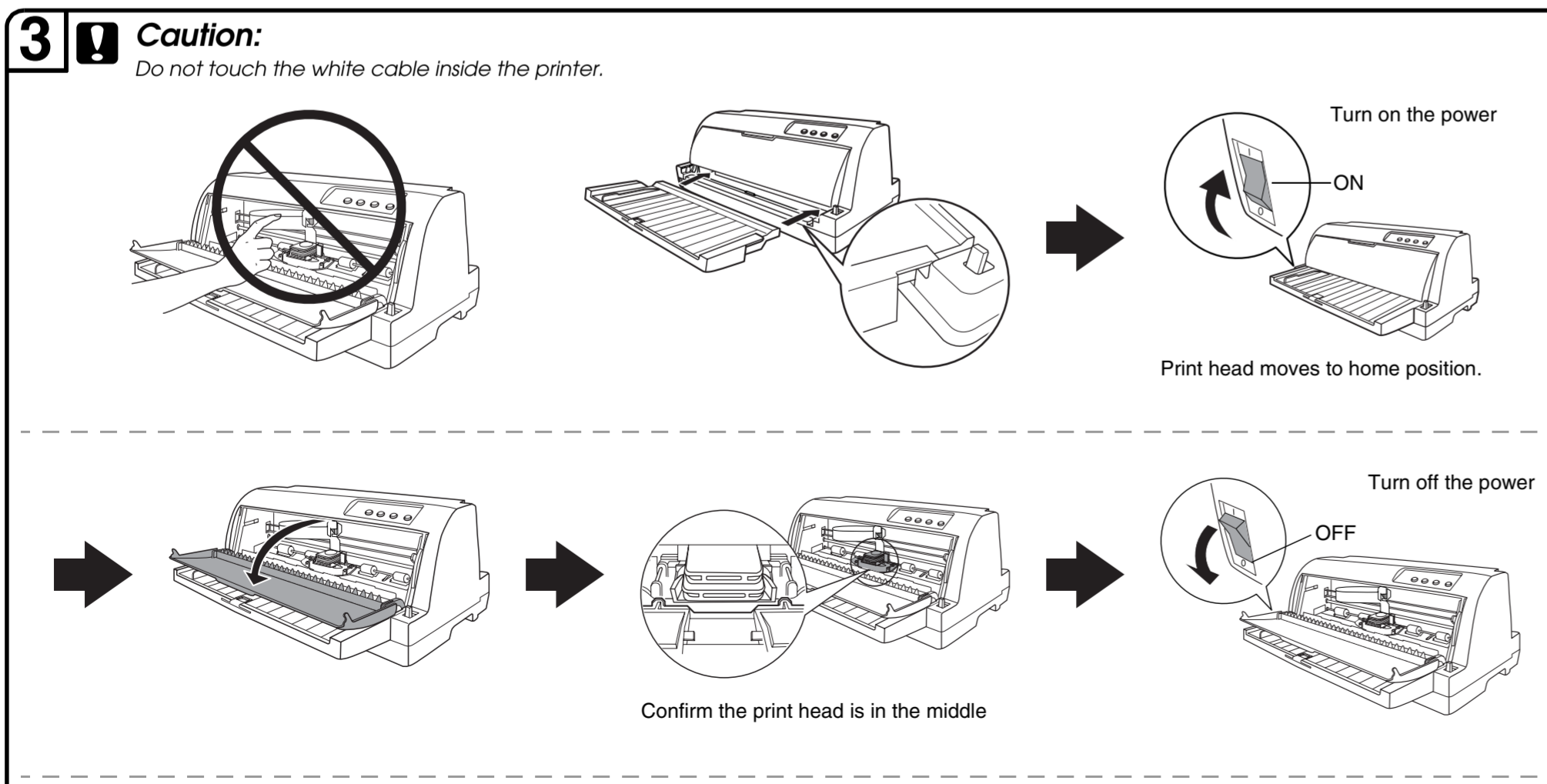
## Unpacking



## Connecting the Power Cord

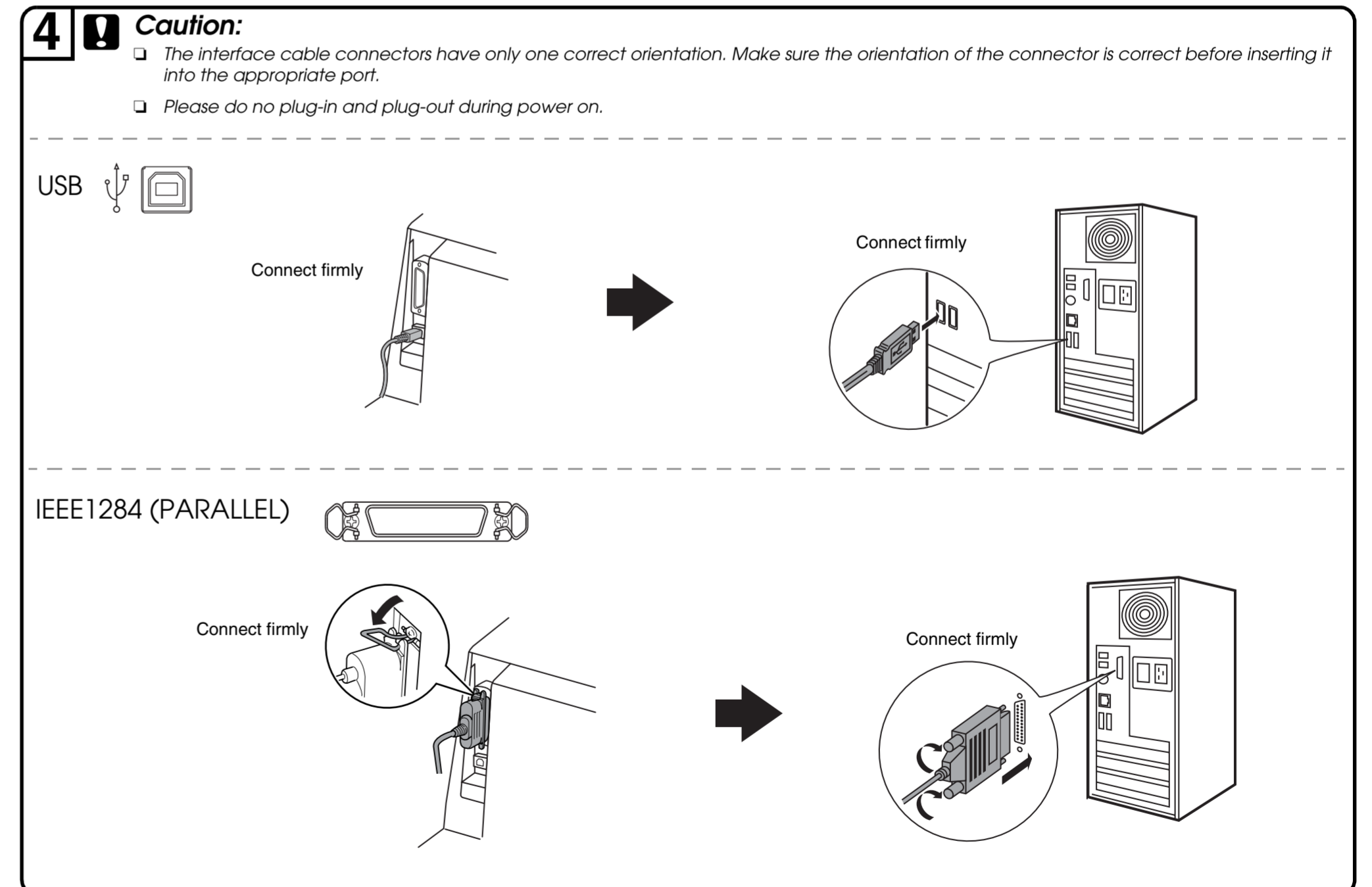


## Assembling the Printer



Continued ➤

## Connecting the Printer to Your Computer



Continued on back ➤

# Installing the Printer Software

**5** Windows 8

<http://www.epson.com>  
Download the printer driver and install it

---

Windows 7/Vista/XP/2000

Confirm the **○** (OFF)

Insert

Windows 7 and Vista only

Turn on the power

**Follow the instructions**

**Note:**  
Installing the printer software may require administrator privileges. If you have problems, ask your administrator for more information.

## Printing on single sheets

Push back the lever

Slide the edge guide until it rests against the guide mark

Insert the paper

**7** Now setup is finished and the printer is ready.

For detailed information about the printer and troubleshooting, refer to the User's Guide.

Copy by drag & drop or Open by double-click

If you cannot find the information you require in the User's Guide, visit our Web site:  
<http://www.epson.com>

# Loading Paper

**6** Printing on continuous paper with the push tractor

Raise the lever

Slide the edge guide

Unlock

Lock

Do not lock

Move the left sprocket to 0 and lock it

Slide the right sprocket to the edge of the paper

Slide the center paper support to the middle of the two sprockets

Fasten

Fasten

Open the sprocket covers of the both sprockets

Fit the paper

Lock

Continued

No part of this publication may be reproduced, stored in a retrieval system, or transmitted in any form or by any means, electronic, mechanical, photocopying, recording, or otherwise, without the prior written permission of Seiko Epson Corporation. No patent liability is assumed with respect to use of the information contained herein. Neither is any liability assumed for damages resulting from the use of the information contained herein.

Neither Seiko Epson Corporation nor its affiliates shall be liable to the purchaser of this product or third parties for damages, losses, costs, or expenses incurred by the purchaser or third parties as a result of: accident, misuse, or abuse of this product or unauthorized modifications, repairs, or alterations to this product, or (excluding the U.S.) failure to strictly comply with Seiko Epson Corporation's operating and maintenance instructions.

Seiko Epson Corporation and its affiliates shall not be liable against any damages or problems arising from the use of any options or any consumable products other than those designated as Original Epson Products or Epson Approved Products by Seiko Epson Corporation.

EPSON is a registered trademark of Seiko Epson Corporation.

Microsoft®, Windows®, and Windows Vista® are registered trademarks of Microsoft Corporation in the United States and/or other countries.

**General Notice:** Other product names used herein are for identification purposes only and may be trademarks of their respective owners. Epson disclaims any and all rights in those marks. The contents of this manual are subject to change without notice.

Copyright © 2013 Seiko Epson Corporation. All rights reserved.  
Printed in XXXX