
Printer Software

About Your Printer Software

The Epson software includes the printer driver software and EPSON Status Monitor 3.

The printer driver is software that allows your computer to control the printer. You need to install the printer driver so your Windows software applications can take full advantage of the printer's capabilities.

EPSON Status Monitor 3 program allows you to monitor the status of your printer, alerts you when errors occur, and provides you with troubleshooting tips. EPSON Status Monitor 3 is automatically installed when you install the printer driver. If you want to install EPSON Status Monitor 3 later, see "Installing EPSON Status Monitor 3" on page 21 for instructions.

Note:

- ❑ *For EPSON LQ-680/LQ-680Pro Users:*

Notes on installing the driver for Windows XP x64 users: When the OS detects the printer, the in-box driver [EPSON LQ-680 ESC/P 2]/[EPSON LQ-680Pro ESC/P 2] is automatically installed; however, the driver that comes with the printer is [EPSON LQ-680 ESC/P2]/[EPSON LQ-680Pro ESC/P2]. Therefore, when you open the printer driver property or select the printer driver, select the driver [EPSON LQ-680 ESC/P2]/[EPSON LQ-680Pro ESC/P2]. Because of the Windows XP x64 specification, be sure not to delete the in-box driver [EPSON LQ-680 ESC/P 2]/[EPSON LQ-680Pro ESC/P 2].

- ❑ *Some functions may not be available depending on your printer model.*

- ❑ *Before proceeding, make sure you have installed the printer driver on your computer described in the Start Here.*
- ❑ *Make sure the software setting is set to ESC/P or ESC/P 2 depending on your printer model. The printer driver software and EPSON Status Monitor 3 can only function in ESC/P or ESC/P 2 mode.*

Using the Printer Driver with Windows Me and 98

You can access the printer driver from your Windows applications or from the Start menu.

- ❑ When you access the printer driver from a Windows application, any settings you make apply only to the application you are using. See “Accessing the printer driver from Windows applications” on page 3 for more information.
- ❑ When you access the printer driver from the Start menu, the printer driver settings you make apply to all your applications. See “Accessing the printer driver from the Start menu” on page 4 for more information.

See “Changing the printer driver settings” on page 5 to check and change printer driver settings.

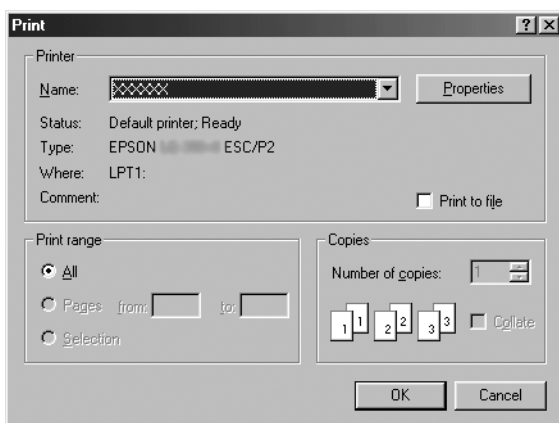
Note:

While many Windows applications override the settings made with the printer driver, some do not, so you must verify that the printer driver settings match your requirements.

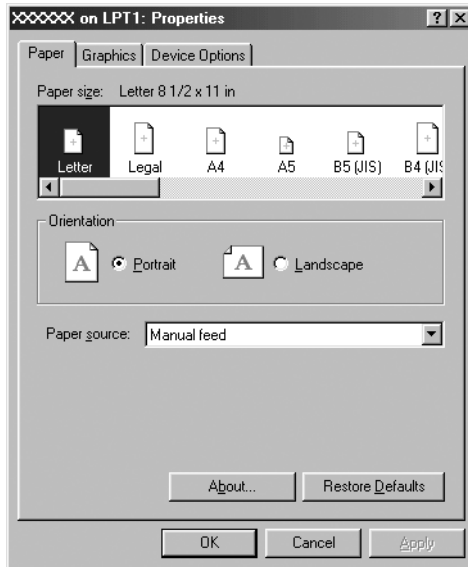
Accessing the printer driver from Windows applications

Follow these steps to access the printer driver from a Windows application:

1. Select Print Setup or Print from the File menu of your application software. In the Print or Print Setup dialog box displayed, make sure that your printer is selected in the Name drop-down list.



2. Click Printer, Setup, Properties, or Options. (The button you click depends on your application and you may need to click a combination of these buttons.) The Properties window appears, and you see the Paper, Graphics, and Device Options menus. These menus contain the printer driver settings.



3. To view a menu, click the corresponding tab at the top of the window. See “Changing the printer driver settings” on page 5 for information on how to change the settings.

Accessing the printer driver from the Start menu

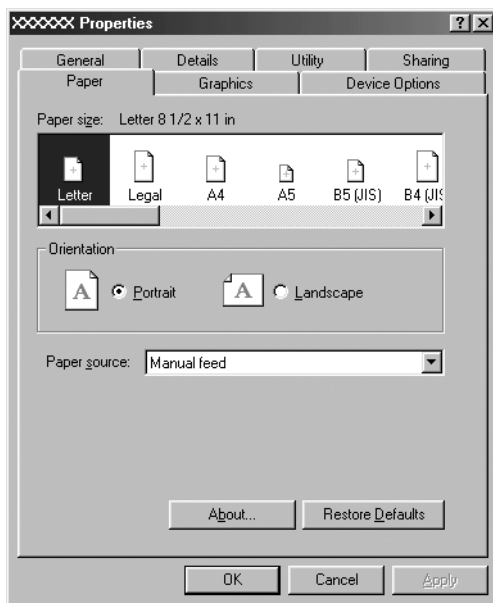
Follow these steps to access the printer driver from the Start menu:

1. Click the Start button, and then point to Settings.
2. Click Printers.

3. Right-click your printer icon, and click Properties. The screen displays the Properties window, which contains the Paper, Graphics, Device Options, and Utility menus. These menus display the printer driver settings.
4. To view a menu, click the corresponding tab at the top of the window. See “Changing the printer driver settings” on page 5 for information on how to change the settings.

Changing the printer driver settings

Your printer driver has seven menus: Paper, Graphics, Device Options, General, Details, Utility, and Sharing. For an overview of the available settings, see “Printer Driver Settings Overview” on page 12. You can also view online help by right-clicking items in the driver and selecting What’s this?



When you finish making printer driver settings, click **OK** to apply the settings, or click **Restore Defaults** to return the settings to their default values.

Once you have checked your printer driver settings and made any necessary changes, you are ready to print.

Using the Printer Driver with Windows Vista, XP, 2000, and Windows NT 4.0

You can access the printer driver from your Windows applications or from the Start menu.

- ❑ When you access the printer driver from a Windows application, any settings you make apply only to the application you are using. See “Accessing the printer driver from Windows applications” on page 7 for more information.
- ❑ When you access the printer driver from the Start menu, the printer driver settings you make apply to all your applications. See “Accessing the printer driver from the Start menu” on page 9 for more information.

See “Changing the printer driver settings” on page 11 to check and change printer driver settings.

Note:

While many Windows applications override the settings made with the printer driver, some do not, so you must verify that the printer driver settings match your requirements.

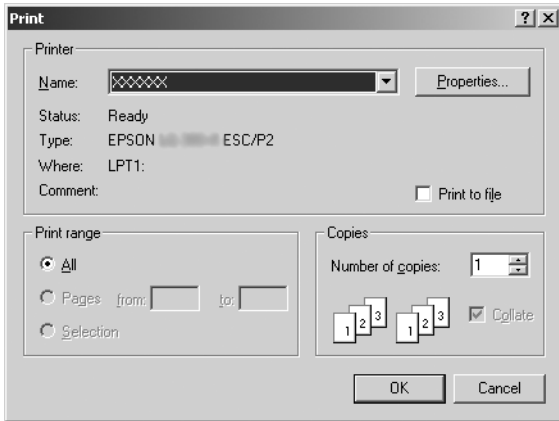
Accessing the printer driver from Windows applications

Follow these steps to access the printer driver from a Windows application:

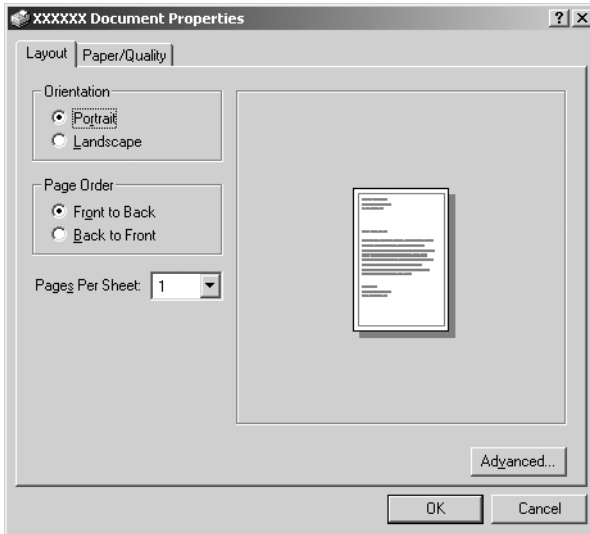
Note:

The examples in the following section are from the Windows 2000 operating system. They may vary in appearance from what actually appears on your screen; however, the instructions are the same.

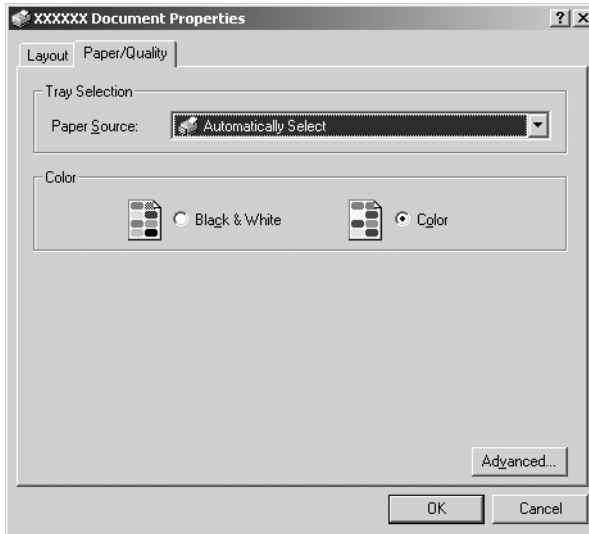
1. Select Print Setup or Print from the File menu of your application software. In the Print or Print Setup dialog box displayed, make sure that your printer is selected in the Name drop-down list.



2. Click Printer, Setup, Properties, or Options. (The button you click depends on your application and you may need to click a combination of these buttons.) The Document Properties window appears, and you see the Layout and Paper/Quality menus (Windows XP and 2000) or Layout, Paper/Quality, User Defined Paper and Extension Settings menus (Windows Vista). These menus contain the printer driver settings.



3. To view a menu, click the corresponding tab at the top of the window. See “Changing the printer driver settings” on page 11 to change the settings.



Accessing the printer driver from the Start menu

Follow these steps to access the printer driver from the Start menu:

Note:

The screen shots used in this procedure are from the Windows 2000 operating system. They may vary in appearance from what actually appears on your screen; however, the instructions are the same.

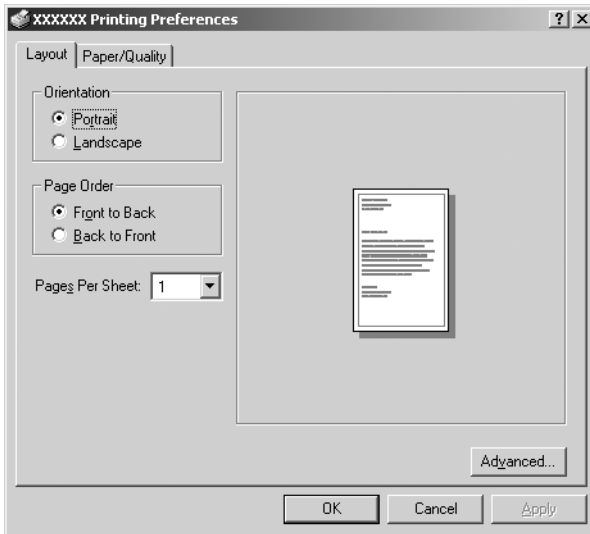
1. For Windows Vista:
Click Start, click Control Panel, click Hardware and Sound, and then click Printers.

For Windows 2000, XP, NT4.0:

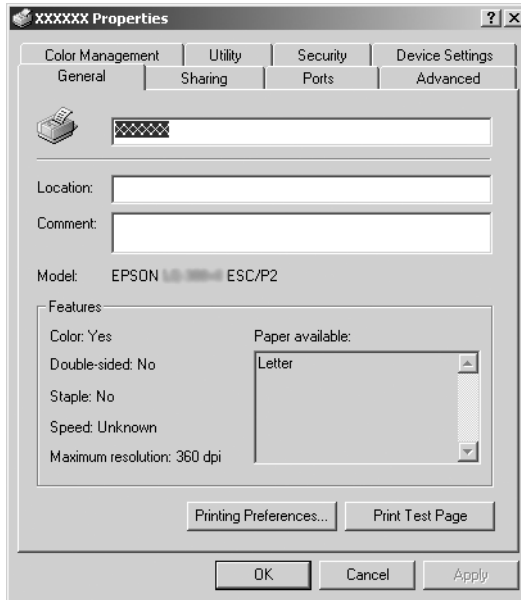
Click Start, point to Settings, and then select Printers.

2. Right-click your printer icon, and click Printing Preferences (in Windows Vista, XP or 2000) or Document Defaults (in Windows NT 4.0).

The screen displays the Document Properties window, which contains the Layout and Paper/Quality menus (Windows XP, 2000 and NT4.0) or Layout, Paper/Quality, User Defined Paper and Extension Settings menus (Windows Vista). These menus display the printer driver settings.



When you click Properties in the menu displayed by right-clicking the printer icon, the Properties window appears, which includes menus used to make the printer driver settings.

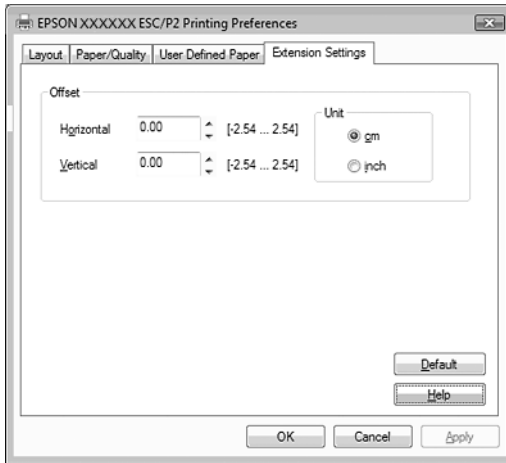


3. To view a menu, click the corresponding tab at the top of the window. See “Printer Driver Settings Overview” on page 12 for information on how to change the settings.

Changing the printer driver settings

Your printer driver has two menus from which you can change the printer driver settings; Layout and Paper/Quality. You can also change settings on the Utility menu in the printer software. For an overview of the available settings, see “Printer Driver Settings Overview” on page 12. For Windows XP/2000, you can also view online help by right-clicking items in the driver and selecting What’s this?

If you are using Windows Vista, click the Help button on the Printer Driver screen.



When you finish making your printer driver settings, click **OK** to apply the settings, or click **Cancel** to cancel your changes.

Once you have checked your printer driver settings and changed them if necessary, you are ready to print.

Printer Driver Settings Overview

The following tables show the Windows printer driver settings. Note that not every setting is available in all versions of Windows.

For more details, see Help for the printer driver.

Printer settings

Note:

Depends on the type of printer, some functions may not be displayed.

Settings	Explanations
Paper Size	Select the size of the paper you want to use. If you do not see your paper size, use the scroll bar to scroll through the list. If your paper size is not included in the list, see "Definition of Custom Paper Size" on page 15 for instructions.
Orientation	Select Portrait or Landscape.
Paper Source	Select the paper source you want to use.
Resolution/ Graphics Resolution	Select the printing resolution you want. The higher the resolution you select, the more detailed your printout will be; however, increasing the resolution slows printing.
Dithering	You can leave this option set to Fine, which is the default setting, or select another dithering pattern depending on the kind of printout you want.
Intensity	Move the slider to make your printout lighter or darker.
Print Quality	Select a print quality option from the Print quality list. If you set Hi-speed to On, you will enter bidirectional printing mode and printing speed will increase. Setting Hi-speed to Off will return the printer to unidirectional printing mode. Printing speed will decrease, but printing precision will improve. Printing with the default settings uses the settings stored in the printer.
Halftone Setup.../Halftone Color Adjustment...	Click this button to set the brightness and contrast, input the RGB gamma, or make other settings. The Halftone Color Adjustment dialog box appears. For details, click the Help button in this dialog box.
Halftoning	Select the type of halftoning to use when printing graphics. To let the printer determine the best halftone quality, use Auto Select.

Settings	Explanations
Printer Font Setting	<p>Select a character table group to use. You can select one of three character table groups, Standard, Expanded, and None (Bit Image printing).</p> <p>When Standard or Expanded is selected, the printer uses the device fonts. Expanded includes more fonts than Standard.</p> <p>When None is selected, the printer uses bit map images instead of the device fonts.</p> <p>For details on the fonts which are included in each table, see your printer's documentation.</p>
Print Text as Graphics*	Select Off when the printer uses the device fonts and select On when the printer does not use the device fonts.
Metafile Spooling*	Select whether to use EMF spooling.
Paper Order*	Select whether to print from front to back or back to front.
Pages Per Sheet*	Select the number of pages that you want to print onto a single page.
Copy Count*	When you select more than one in the Number of copies box, this check box appears and you can select whether to collate the pages of the copies.
Advanced Printing Features*	Select Enable or Disable for the metafile Spooling.
Print Optimizations*	Select Disable when the printer does not use the device fonts and select Enable when the printer uses the device fonts.
Color	Select whether to use color printing. To use color printing, you have to install the optional color upgrade kit.
Printable Area	<p>If Standard is selected, the normal printable area for Epson impact printers is used.</p> <p>If Maximum is selected, the printer's maximum printable area is used.</p>

Settings	Explanations
Top Margin Priority**	Select which setting for the print-start position is to be used; driver setting or printer setting. For more details, see Help for the printer driver.
Packet Mode**	Ordinarily, there is no need to change this setting. If you change the printer's Packet Mode settings, change this setting to match. If the printer and printer driver settings are different, you may not be able to print correctly. For more details, see Help for the printer driver.
User Defined Paper**	If your paper is not included in the Paper Size drop-down list, you can add the size to the list. For more details, see Help for the printer driver.
Offset**	This setting allows you to offset the image on the page. That is, you can adjust the position of the printed image. If the offset you specify moves a portion of the image out of the printer's printable area, that portion will not be printed.

* For details, see Windows help.

** For Windows Vista and XP Professional x64 Edition.

Definition of Custom Paper Size

If your paper is not included in the Paper Size drop-down list, you can add the size to the list.

For Windows Me and 98:

Click Custom or User Defined Size and enter the paper size in the dialog box that appears.

For Windows XP, 2000, and Windows NT 4.0 (except Professional x64 Edition):

1. For Windows 2000 or Windows NT 4.0, click Start, point to Settings, and click to Printers.

For Windows XP Professional, click Start, and click Printers and Faxes.

For Windows XP Home Edition, click Start, and click Control Panel, then click Printers and Faxes.

2. Click the EPSON xxxx ESC/P or EPSON xxxx ESC/P2 icon.
3. Select Server Properties from the file menu.
4. Check the Create a New Form.
5. Enter the paper size in the Measurement fields.
6. Click Save Form and then click OK.

Note:

You can use this method also on Windows Vista or XP Professional x64 Edition. To open the Server Properties screen on Windows Vista, you need to use the Run as administrator option.

For Windows Vista and XP Professional x64 Edition:

1. For Windows Vista, click Start, and click Control Panel, and click Hardware and Sound, then click Printers.

For Windows XP Professional x64 Edition, click Start, and click Printers and Faxes.

2. Right click your printer icon, and click Printing Preferences.
3. Select the User Defined Paper menu.
4. Enter the paper size in the Paper Size fields.
5. Click Apply and then click OK.

Note:

For more details, see Help for the printer driver.

Monitoring settings

Settings	Explanations
EPSON Status Monitor 3	You can access EPSON Status Monitor 3 when you click this button. To monitor the printer, make sure the Monitor the printing status check box is selected.
Monitoring Preferences	Click this button to open the Monitoring Preferences dialog box where you can make settings for EPSON Status Monitor 3. See "Setting up EPSON Status Monitor 3" on page 18 for more information.

Using EPSON Status Monitor 3

EPSON Status Monitor 3 is available for Windows Vista, XP, Me, 98, 2000, and Windows NT 4.0. It allows you to monitor your printer's status, alerts you when printer errors occur, and provides troubleshooting instructions when needed.

EPSON Status Monitor 3 is available when:

- The printer is connected directly to the host computer via the parallel port [LPT1] or the USB port.
- Your system is configured to support bidirectional communication.

EPSON Status Monitor 3 is installed when the printer is connected directly and you install the printer driver as described in the *Start Here*. When sharing the printer, be sure to set EPSON Status Monitor 3 so that the shared printer can be monitored on the printer server. See "Setting up EPSON Status Monitor 3" on page 18 and "Sharing the printer" on page 22.

Note:

- ❑ *If you are using a computer running Windows Vista x64 Edition with multiple users are logged on, a communication error message may be displayed when monitoring printers at the same time.*
- ❑ *When connecting to a shared printer beyond a router, error and warning notification for shared printers during printing is not available in some cases because of the router's settings.*

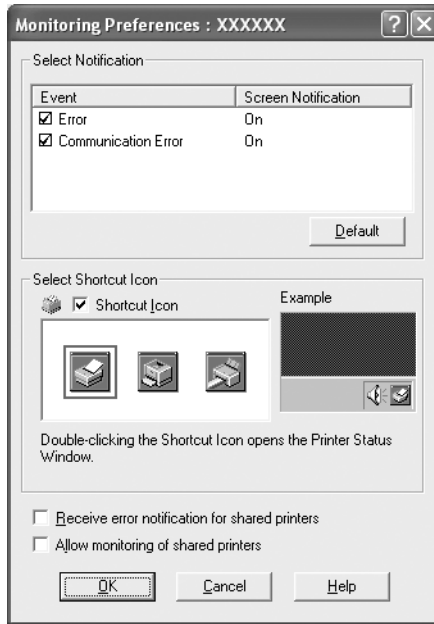
Before using EPSON Status Monitor 3, be sure to read the README file on the User CD-ROM. This file contains the latest information on the utility.

Setting up EPSON Status Monitor 3

Follow these steps to set up EPSON Status Monitor 3:

1. Open the Utility menu as described in “Using the Printer Driver with Windows Me and 98” on page 2 or “Using the Printer Driver with Windows Vista, XP, 2000, and Windows NT 4.0” on page 6.

- Click the Monitoring Preferences button. The Monitoring Preferences dialog box appears.



- The following settings are available:

Select Notification	Displays the error item check box On/Off status. Turn on this check box to display the selected error notification.
Select Shortcut icon	The selected icon is displayed on the taskbar. The setting's example is shown on the right window. By clicking the shortcut icon, you can access the Monitoring Preferences dialog box easily.
Receive error notification for shared printers	Error notification for a shared printer can be received when this check box is selected.

<p>Allow monitoring of shared printer</p>	<p>When this check box is selected, a shared printer can be monitored by other PCs.</p> <p>Note: <i>If the server's OS is Windows Vista, select Run as Administrator when opening the printer properties before checking.</i></p>
---	---

Note:

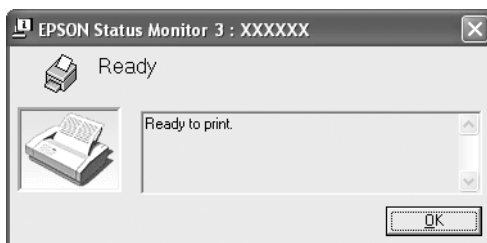
Click the Default button to revert all items to the default settings.

Accessing EPSON Status Monitor 3

Do one of the following to access EPSON Status Monitor 3;

- ❑ Double-click the printer-shaped shortcut icon on the taskbar. To add a shortcut icon to the taskbar, go to the Utility menu and follow the instructions.
- ❑ Open the Utility menu, then click the EPSON Status Monitor 3 icon. To find out how to open the Utility menu, See “Using the Printer Driver with Windows Me and 98” on page 2 or “Using the Printer Driver with Windows Vista, XP, 2000, and Windows NT 4.0” on page 6.

When you access EPSON Status Monitor 3 as described above, the following printer status window appears.



You can view printer status information in this window.

Installing EPSON Status Monitor 3

Follow the steps below to install EPSON Status Monitor 3.

Note:

It might not be possible to retrieve the printer status during printing. In this situation, click the EPSON Status Monitor3 button in the Utility tab, and use the printer with the status window left open.

1. Make sure that the printer is off and that Windows is running on your computer.
2. Insert the printer software CD-ROM in the CD-ROM drive.

Note:

- If the language selection window appears, select your country.*
 - If the EPSON Installation Program screen does not appear automatically, double-click the My Computer icon, right-click the CD-ROM icon, click OPEN in the menu that appears, then double-click Epsetup.exe.*
3. Click Continue. When the software license agreement screen appears, read the statement, then click Agree.
 4. Click Custom.
 5. Select the EPSON Status Monitor 3 check box, then click Install.
 6. In the dialog box that appears, make sure that your printer icon is selected, and click OK. Then follow the on-screen instructions.
 7. When the installation is complete, click OK.

Setting Up Your Printer on a Network

Sharing the printer

This section describes how to share the printer on a standard Windows network.

The computers on a network can share a printer that is directly connected to one of them. The computer that is directly connected to the printer is the printer server, and the other computers are the clients which need permission to share the printer with the printer server. The clients share the printer via the printer server.

According to the versions of Windows OS and your access rights on the network, perform the appropriate settings of the printer server and clients.

Setting the printer server

- ❑ For Windows Me or 98, see “With Windows Me or 98” on page 23.
- ❑ For Windows Vista, XP, 2000, or Windows NT 4.0, see “With Windows Vista, XP, 2000, or Windows NT 4.0” on page 25.

Setting the clients

- ❑ For Windows Me or 98, see “With Windows Me or 98” on page 28.
- ❑ For Windows XP or 2000, see “With Windows XP or 2000” on page 30.
- ❑ For Windows Vista, see “With Windows Vista” on page 33
- ❑ For Windows NT 4.0, see “With Windows NT 4.0” on page 39.

Note:

- ❑ *When sharing the printer, be sure to set EPSON Status Monitor 3 so that the shared printer can be monitored on the printer server. See “Setting up EPSON Status Monitor 3” on page 18.*
- ❑ *When you are Windows shared printer user in a Windows Me or 98 environment, on the server, double-click the Network icon in Control panel and make sure that the “File and printer sharing for Microsoft Networks” component is installed. Then, on the server and clients, make sure that the “IPX/SPX-compatible Protocol” or the “TCP/IP Protocol” is installed.*
- ❑ *When connecting to a Windows XP shared printer, error and warning notifications do not appear during printing. Installing Windows XP Service Pack 1 or later will solve this problem.*
- ❑ *When connecting to a shared printer beyond a router, error and warning notification for shared printers during printing is not available in some cases because of the router’s settings.*
- ❑ *The printer server and clients should be set on the same network system, and they should be under the same network management beforehand.*
- ❑ *The on-screen displays on the following pages may differ depending on the version of Windows OS.*

Setting up your printer as a shared printer

With Windows Me or 98

When the printer server’s OS is Windows Me, 98, follow these steps to set the printer server.

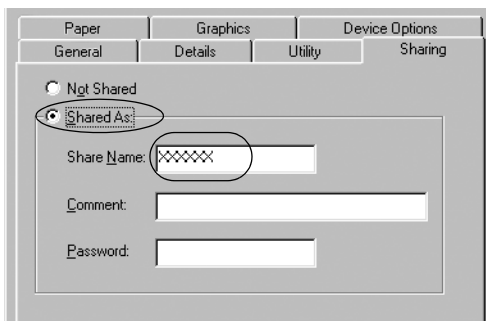
1. Click Start, point to Settings, and click Control Panel.
2. Double-click the Network icon.

3. Click File and Print Sharing on the Configuration menu.
4. Select the I want to be able to allow others to print to my printer(s). check box, then click OK.
5. Click OK to accept the settings.

Note:

- ❑ When "Insert the Disk" appears, insert the Windows Me or 98 CD-ROM in the computer. Click OK and then follow the on-screen instructions.
- ❑ When the prompt to restart the computer appears, restart the computer and continue with the settings.

6. Double-click the Printers icon on the control panel.
7. Right-click your printer icon, and click Sharing in the menu that appears.
8. Select Shared As, type the name in the Share Name box, and click OK. Type a Comment and Password if needed.



Note:

- ❑ Do not use spaces or hyphens for the share name, or an error may occur.

- ❑ *When sharing the printer, be sure to set EPSON Status Monitor 3 so that the shared printer can be monitored on the printer server. See “Setting up EPSON Status Monitor 3” on page 18.*

You need to set the client computers so that they can use the printer on a network. See the following pages for details.

- ❑ “With Windows Me or 98” on page 28
- ❑ “With Windows XP or 2000” on page 30
- ❑ “With Windows Vista” on page 33
- ❑ “With Windows NT 4.0” on page 39

With Windows Vista, XP, 2000, or Windows NT 4.0

When the printer server’s OS is Windows Vista, XP, 2000, or Windows NT 4.0, follow these steps to set the printer server.

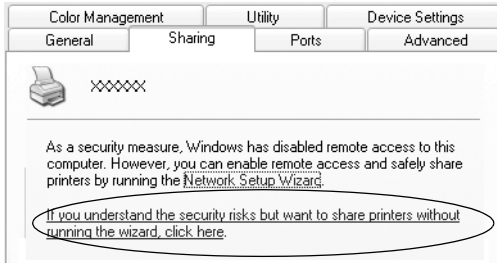
Note:

You must access Windows Vista, XP, 2000, or Windows NT 4.0 as the Administrators of the local machine.

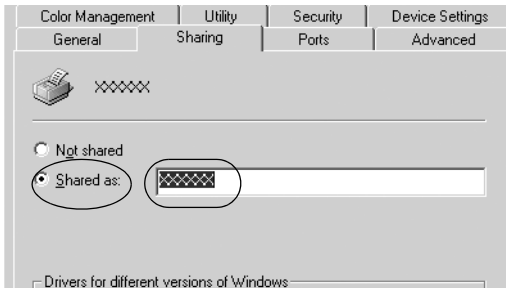
1. For a Windows 2000 or Windows NT 4.0 printer server, click Start, point to Settings, and click Printers.
For a Windows XP Professional printer server, click Start, and click Printers and Faxes.
For Windows XP Home Edition printer server, click Start, click Control panel, then click Printers and Faxes.
For a Windows Vista printer server, click Start, click Control Panel, click Hardware and Sound, and then click Printers.
2. Right-click your printer icon, and click Sharing in the menu that appears.

For Windows XP, if the following menu appears, click either Network Setup Wizard or If you understand the security risks but want to share printers without running the wizard, click here.

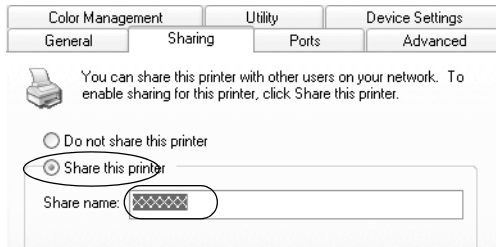
In either case, follow the on-screen instructions.



3. For a Windows 2000 or Windows NT 4.0 printer server, select Shared as (for Windows 2000) or Shared (for Windows NT 4.0), then type the name in the Share name box and click OK.



For a Windows Vista or XP printer server, select Share this printer, then type the name in the Share name box and click OK.



Note:

- ❑ *Do not use spaces or hyphens for the share name, or an error may occur.*

- ❑ *In Windows Vista, you cannot select share this printer until you click the Change sharing options button.*

You need to set the client computers so that they can use the printer on a network. See the following pages for details:

- ❑ “With Windows Me or 98” on page 28
- ❑ “With Windows XP or 2000” on page 30
- ❑ “With Windows Vista” on page 33
- ❑ “With Windows NT 4.0” on page 39

Setting for the clients

This section describes how to install the printer driver by accessing the shared printer on a network.

Note:

- ❑ *To share the printer on a Windows network, you need to set the printer server. For details, see “Setting up your printer as a shared printer” on page 23 (Windows Me or 98) or “With Windows Vista, XP, 2000, or Windows NT 4.0” on page 25 (Windows Vista, XP, 2000, or Windows NT 4.0).*
- ❑ *This section describes how to access the shared printer on a standard network system using the server (Microsoft workgroup). If you cannot access the shared printer due to the network system, ask the administrator of the network for assistance.*
- ❑ *This section describes how to install the printer driver by accessing the shared printer from the Printers folder. You can also access the shared printer from Network Neighborhood or My Network on the Windows desktop.*
- ❑ *When you want to use the EPSON Status Monitor 3 at clients, you have to install both of the printer driver and the EPSON Status Monitor 3 in each client from the CD-ROM.*

With Windows Me or 98

Follow these steps to set Windows Me or 98 clients.

1. Click Start, point to Settings, and click Printers.
2. Double-click the Add Printer icon, then click Next.
3. Select Network printer, then click Next.
4. Click Browse, and the Browse for Printer dialog box appears.

Note:

You can also type “\\(the name of the computer that is locally connected to the shared printer)\(the shared printer’s name)” in the Network path or queue name.

5. Click the computer or server that is connected to the shared printer, and the name of the shared printer. Then click OK.



Note:

The name of the shared printer may be changed by the computer or server that is connected to the shared printer. To make sure of the name of the shared printer, ask the administrator of the network.

6. Click Next.

Note:

- If the printer driver is installed in the client beforehand, you need to select the new printer driver or the current printer driver. When the prompt to select the printer driver appears, select the printer driver according to the message.*
 - If the printer server's OS is Windows Me or 98, go to the next step.*
 - If the printer server's OS is not Windows Me or 98, go to "Installing the printer driver from the CD-ROM" on page 40.*
7. Make sure of the name of the shared printer, and select whether to use the printer as the default printer or not. Click OK, and then follow the on-screen instructions.

Note:

You can change the shared printer's name so that it appears only on the client computer.

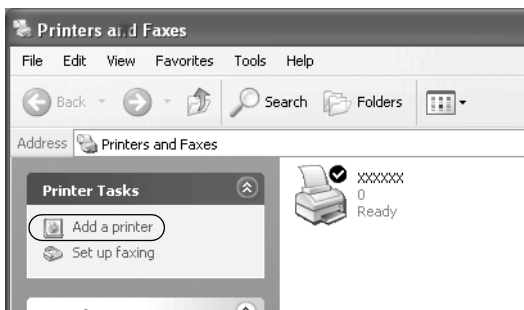
With Windows XP or 2000

Follow these steps to set Windows XP or 2000 clients.

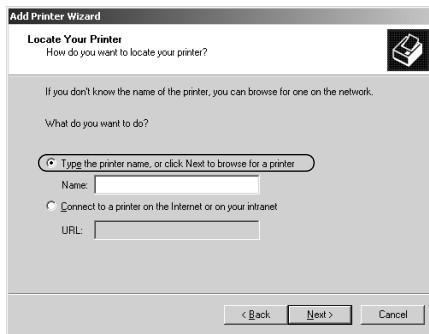
You can install the printer driver of the shared printer, if you have Power Users or more powerful access rights even if you are not the Administrator.

1. For Windows 2000 clients, click Start, point to Settings, and click Printers.
For Windows XP Professional clients, click Start, and click Printers and Faxes.
For Windows XP Home Edition clients, click Start, click Control panel, then click Printers and Faxes.
2. For Windows 2000, double-click the Add Printer icon, then click Next.

For Windows XP, click the Add a printer in the Printer Tasks menu.



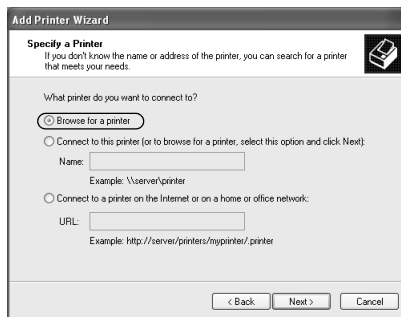
3. Select Network printer (for Windows 2000) or A network printer, or a printer attached to another computer (for Windows XP), then click Next.
4. For Windows 2000, select Type the printer name, or click Next to browse for a printer, then click Next.



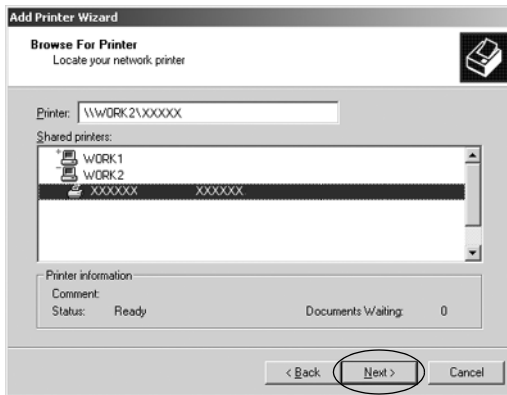
Note:

You can also type the shared printer's name or network path in the Name box, such as "\\(the name of the computer that is locally connected to the shared printer)\(the shared printer's name)."

For Windows XP, select Browse for a printer, then click Next.



5. Click the icon of the computer or server that is connected to the shared printer, and the name of the shared printer. Then click Next.



Note:

- ❑ *The name of the shared printer may be changed by the computer or server that is connected to the shared printer. To make sure of the name of the shared printer, ask the administrator of the network.*
 - ❑ *If the printer driver is installed in the client beforehand, you need to select either the new printer driver or the current printer driver. When the prompt to select the printer driver appears, select the printer driver according to the message.*
 - ❑ *Proceed to the next step if the printer server and client have the same OS and the same architecture (x64/x86).*
 - ❑ *If the printer server's OS is not Windows XP or 2000, go to "Installing the printer driver from the CD-ROM" on page 40.*
6. For Windows 2000, select whether to use the printer as the default printer or not, then click OK.

For Windows Vista or XP, if another driver is already installed, select whether to use the printer as the default printer or not, then click OK.

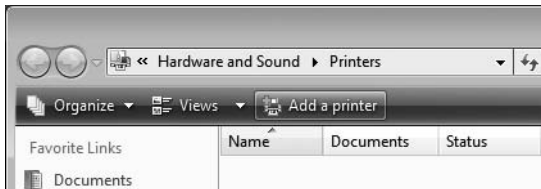
7. Make sure of the settings, then click Finish.



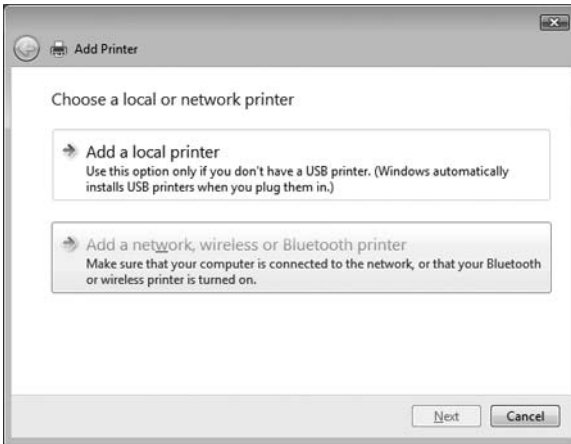
With Windows Vista

Follow these steps to set Windows Vista clients.

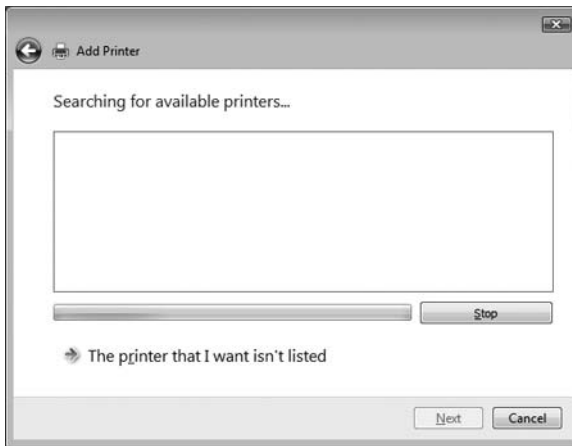
1. Click Start, click Control Panel, click Hardware and Sound, and then click Printers.
2. Click the Add a Printer icon.



3. Click Add a network, wireless or Bluetooth printer.

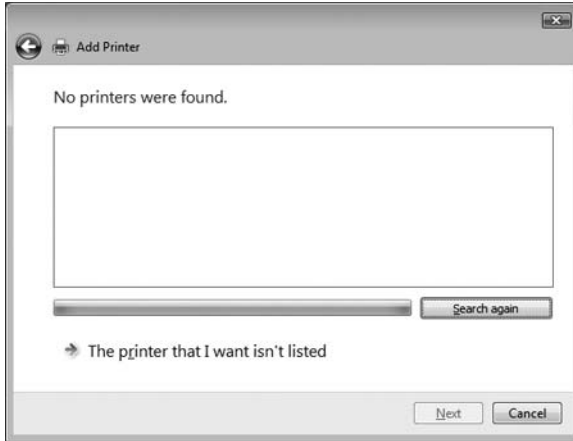


4. A shared printer is automatically searched for.

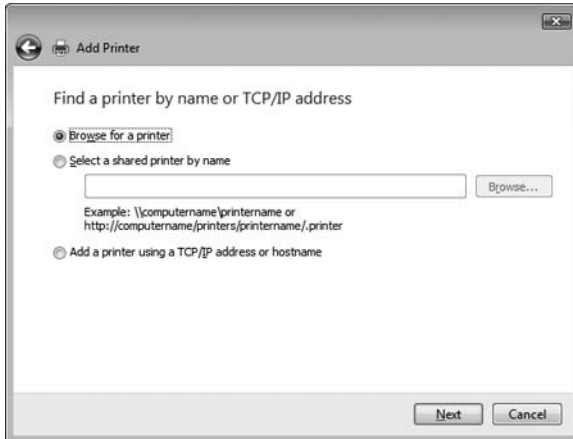


If a shared printer is found, click its icon and click Next.

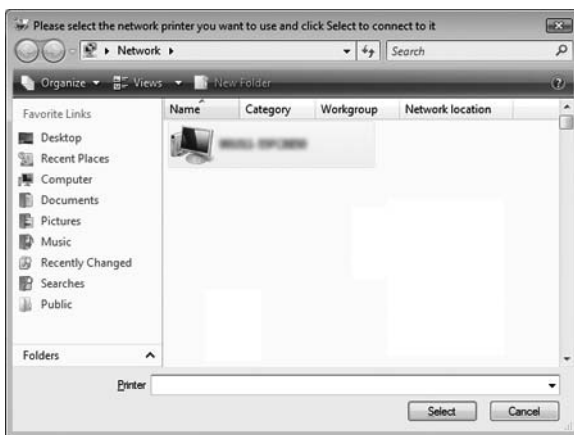
If no shared printer is found, click the The printer that I want isn't listed button.



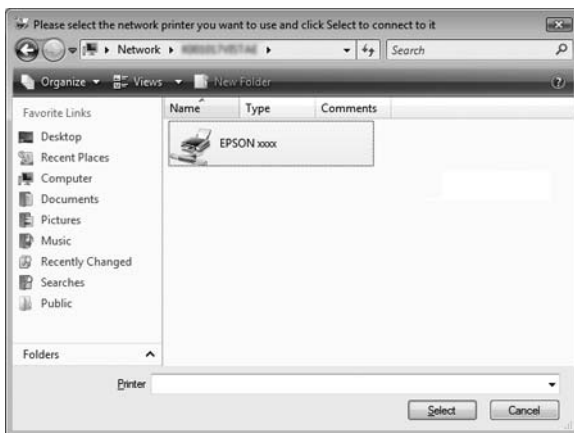
5. Select Browse for a printer and click Next.



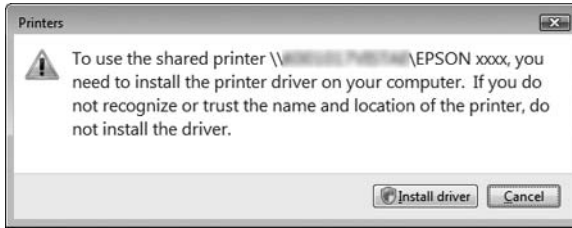
6. A PC icon on your network appears.



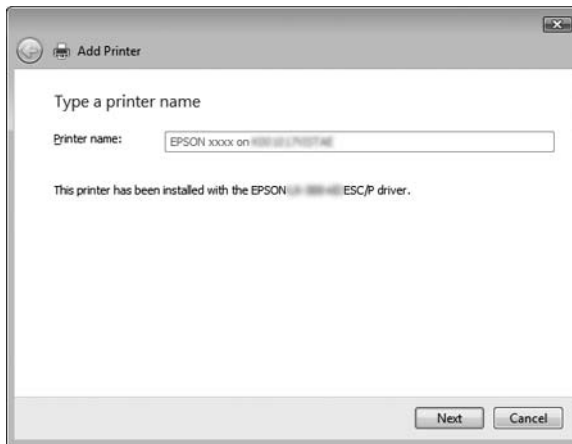
7. Click the PC icon. A shared printer icon appears.



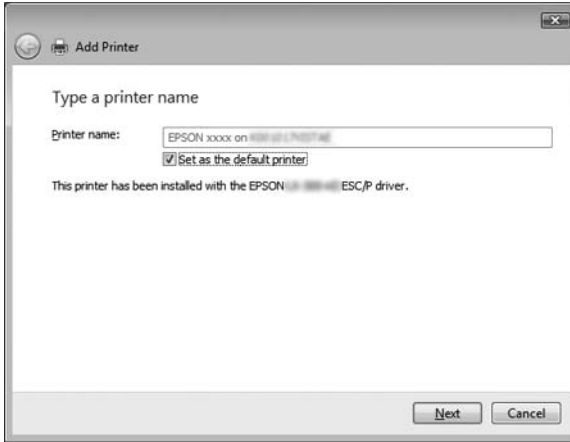
8. Click Install driver.



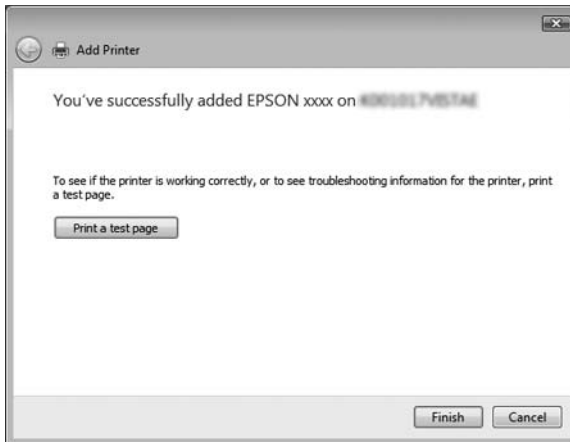
9. Make sure that the appropriate printer driver name is shown, and click Next.



If any other printer driver has already been installed, the Set as the default printer checkbox will appear. If you want to set the shown printer as the default printer, select the checkbox and click Next.



10. Click Finish.

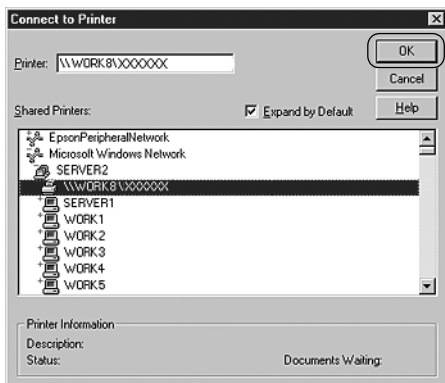


With Windows NT 4.0

Follow these steps to set Windows NT 4.0 clients.

You can install the printer driver of the shared printer, if you have Power Users or more powerful access rights even if you are not the Administrator.

1. Click Start, point to Settings, and click Printers.
2. Double-click the Add Printer icon.
3. Select Network printer server, then click Next.
4. Click the icon of the computer or server that is connected to the shared printer and the name of the shared printer. Then click OK.



Note:

- You can also type “\\(the name of the computer that is locally connected to the shared printer)\(the shared printer’s name)” in Network path or queue name.

- ❑ *The name of the shared printer may be changed by the computer or server that is connected to the shared printer. To make sure of the name of the shared printer, ask the administrator of the network.*
 - ❑ *If the printer driver is installed in the client beforehand, you need to select the new printer driver or the current printer driver. When the prompt to select the printer driver appears, select the printer driver according to the message.*
 - ❑ *If the printer server's OS is Windows NT 4.0, go to the next step.*
 - ❑ *If the printer server's OS is not Windows NT 4.0, go to "Installing the printer driver from the CD-ROM" on page 40.*
5. Select whether to use the printer as the default printer or not, then click OK.
 6. Click Finish.

Installing the printer driver from the CD-ROM

This section describes how to install the printer driver in the clients when the computers of the server and clients use different OS.

The on-screen displays on the following pages may differ depending on the version of Windows OS.

Note:

- ❑ *When installing in Windows Vista, XP, 2000, or Windows NT 4.0 clients, you must access Windows Vista, XP, 2000, or Windows NT 4.0 with the Administrator.*
- ❑ *If the computers of the server and clients use the same OS and the same architecture, you do not have to install the printer drivers from the CD-ROM.*

1. Access the shared printer and a prompt may appear. Click OK, and then follow the on-screen instructions to install the printer driver from the CD-ROM.
2. Insert the CD-ROM, then the EPSON Installation Program dialog box appears. Cancel the dialog box by clicking Cancel, then type the appropriate drive and folder names in which the printer driver for clients is located, then click OK.



When installing drivers in Windows Vista, XP or 2000, “Digital Signature is not found.” may appear. Click Yes (for Windows 2000) , Continue Anyway (for Windows XP) or Install this driver software anyway (for Windows Vista) and continue installing.

The folder name differs depending on the OS being used.

Client's OS	Folder Name
Windows 98	\<Language>\WIN98
Windows Me	\<Language>\WINME
Windows XP, 2000	\<Language>\WIN2000
Windows Vista x86 Edition	\<Language>\WINVISTA
Windows XP Professional x64 Edition, Vista x64 Edition	\<Language>\WINVISTA_XP64
Windows NT 4.0	\<Language>\WINNT40

3. Select the name of the printer, then click OK. Then follow the on-screen instructions.

Note:

- ❑ *If you also want to install EPSON Status Monitor 3, see “Installing EPSON Status Monitor 3” on page 21 for instructions.*
- ❑ *If you want to use EPSON Status Monitor 3 for the shared printer, reinstall the printer driver as instructed in “Setting for the clients” after installing the printer driver and EPSON Status Monitor 3 from the CD-ROM. Before printing, be sure to select the printer driver installed in “Setting for the clients”.*
- ❑ *If EPSON Status Monitor 3 is installed with the Windows Firewall feature turned on (recommended), the shared printer may not be able to be monitored. If this occurs, follow the steps below to enable monitoring.*

Canceling Printing

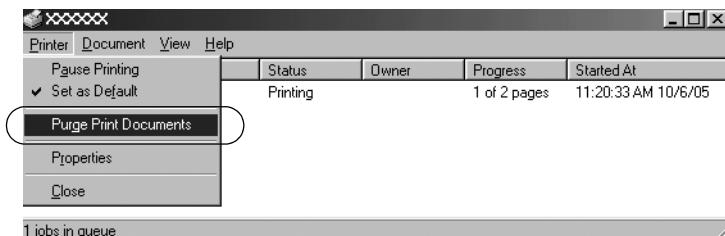
If the printouts are not what you expected and display incorrect or garbled characters or images, you may need to cancel printing. When the printer icon is displayed on the taskbar, follow the instructions below to cancel printing.

1. Double-click the printer icon on the task bar, then click Purge Print Documents on the Printer menu.



2. When canceling all printing documents, select Purge Print Documents (For Windows Me or 98) or Cancel All Documents (For Windows Vista, XP, 2000, or Windows NT 4.0) on the Printer menu.

When canceling a specified document, select a document you want to cancel and select Cancel Printing (For Windows Me or 98) or Cancel (For Windows Vista, XP, 2000, or Windows NT 4.0) on the Document menu.



The printing job is canceled.

Uninstalling the Printer Software

When you wish to reinstall or upgrade the printer driver, uninstall the printer driver that has been installed already.

Note:

When uninstalling EPSON Status Monitor 3 from a multi-user Windows XP/2000 environment, remove the shortcut icon from all clients before uninstalling. You can remove the icon by clearing the Shortcut Icon check box in the Monitoring Preferences dialog box.

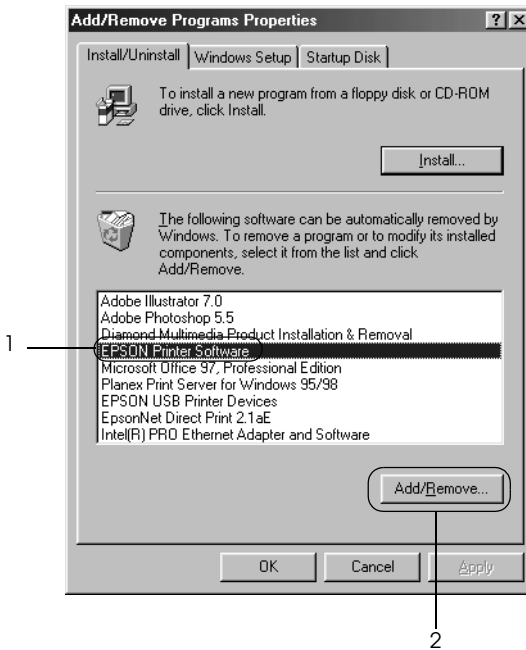
Uninstalling the printer driver and EPSON Status Monitor 3

1. Quit all applications.

2. Click Start, point to Settings, and click Control Panel.
3. Double-click the Add/Remove Programs icon.



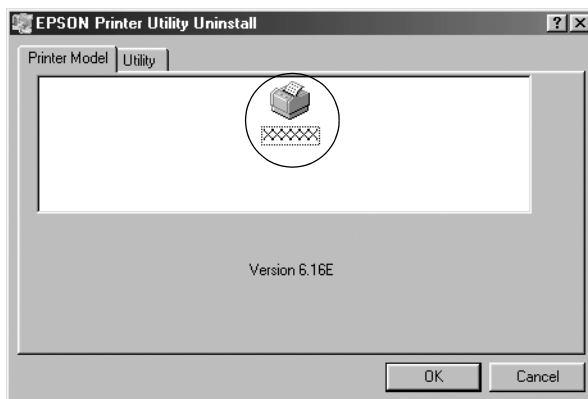
4. Select EPSON Printer Software, and click the Add/Remove.



Note:

When using the Windows XP or Windows 2000 computer, click Change or Remove Programs, select the EPSON Printer Software, then click Change/Remove.

- Click the Printer Model tab, select the icon of the printer you want to uninstall, then click OK.



- If you uninstall Monitored Printers, click Yes in the displayed dialog box.

Note:

You can uninstall only the Monitored Printers utility of EPSON Status Monitor 3. When the utility is uninstalled, you cannot change the setting of Monitored Printers from EPSON Status Monitor 3.

- If you uninstall EPSON Status Monitor 3, click Yes in the displayed dialog box.
- Follow the on-screen instructions.

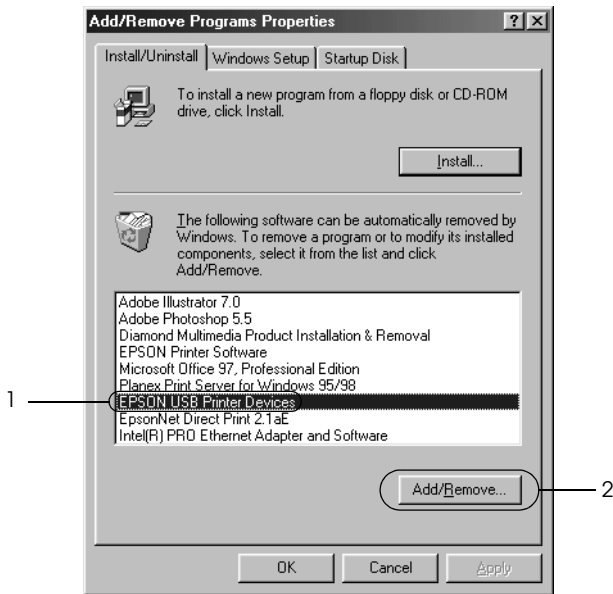
Uninstalling the USB device driver

When you connect the printer to your computer with a USB interface cable, the USB device driver is also installed. When you uninstalled the printer driver, you also need to uninstall the USB device driver.

Follow these steps to uninstall the USB device driver.

Note:

- ❑ *Uninstall the printer driver before uninstalling the USB device driver.*
 - ❑ *Once you uninstalled the USB device driver, you cannot access any other Epson printers connected with a USB interface cable.*
1. Follow steps 1 through 3 of “Uninstalling the Printer Software” on page 43.
 2. Select EPSON USB Printer Devices, and click Add/Remove.



Note:

- ❑ *EPSON USB Printer Devices appears only when the printer is connected to Windows Me or 98 with a USB interface cable.*

- *If the USB device driver is not installed correctly, EPSON USB Printer Devices may not appear. Follow these steps to run the “Epusbun.exe” file in the CD-ROM.*

- 1. Insert the CD-ROM in your computer’s CD-ROM drive.*
- 2. Access the CD-ROM drive.*
- 3. Double-click the \<Language>\WIN98 or \<Language>\WINME folder.*
- 4. Double-click the Epusbun.exe icon.*

3. Follow the on-screen instructions.

See the *Start Here* to reinstall a printer driver.

