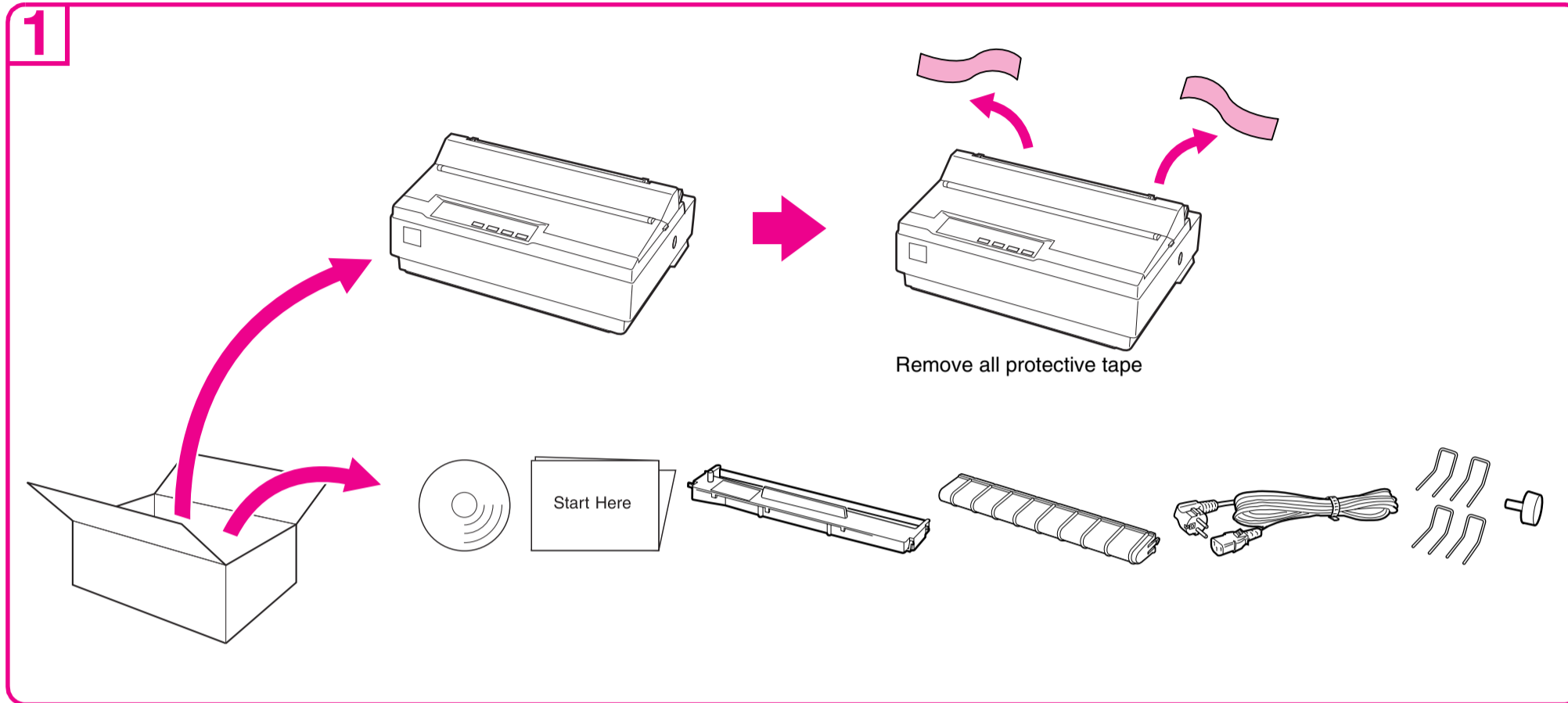


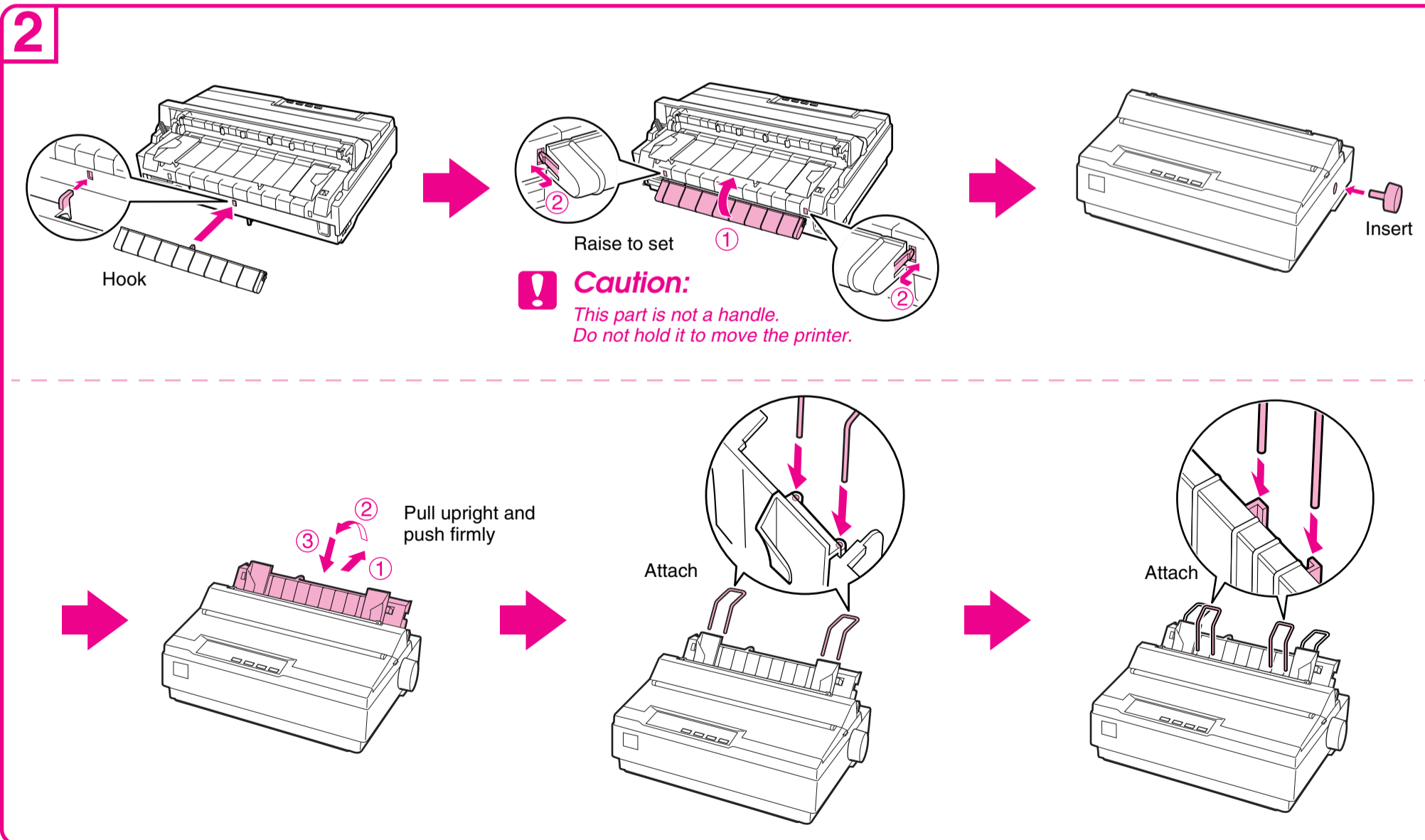
LQ-300+II

Start Here

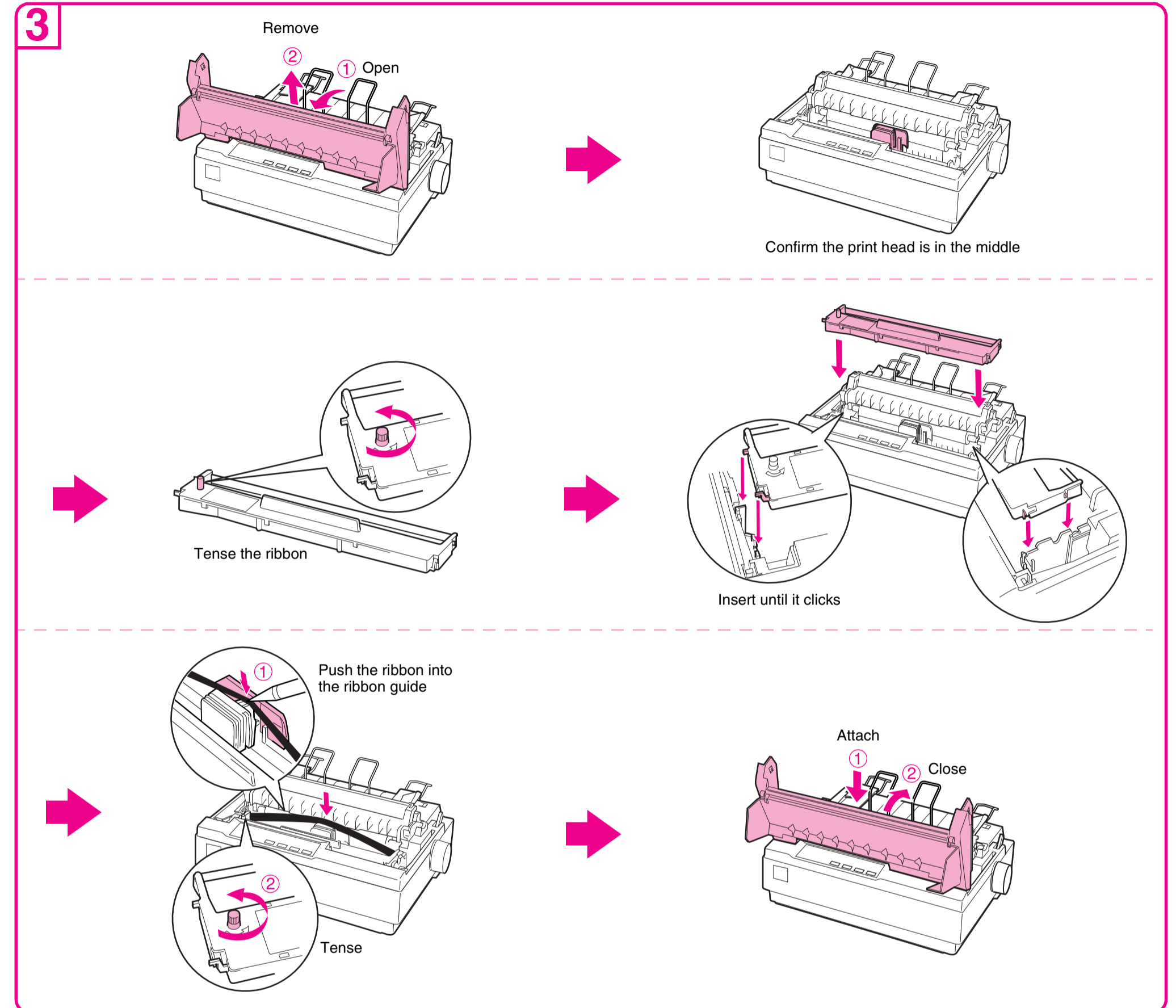
Unpacking



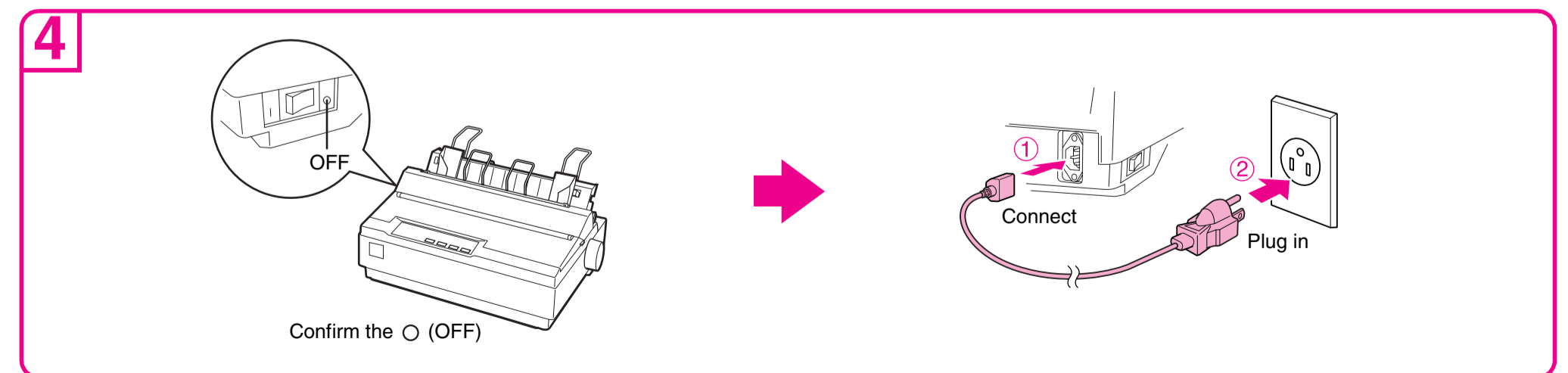
Assembling the Printer



Installing the Ribbon Cartridge

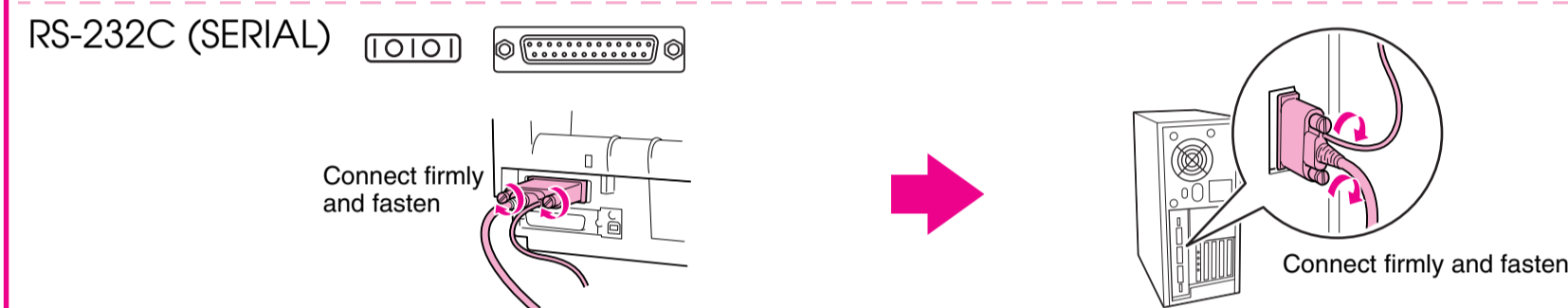
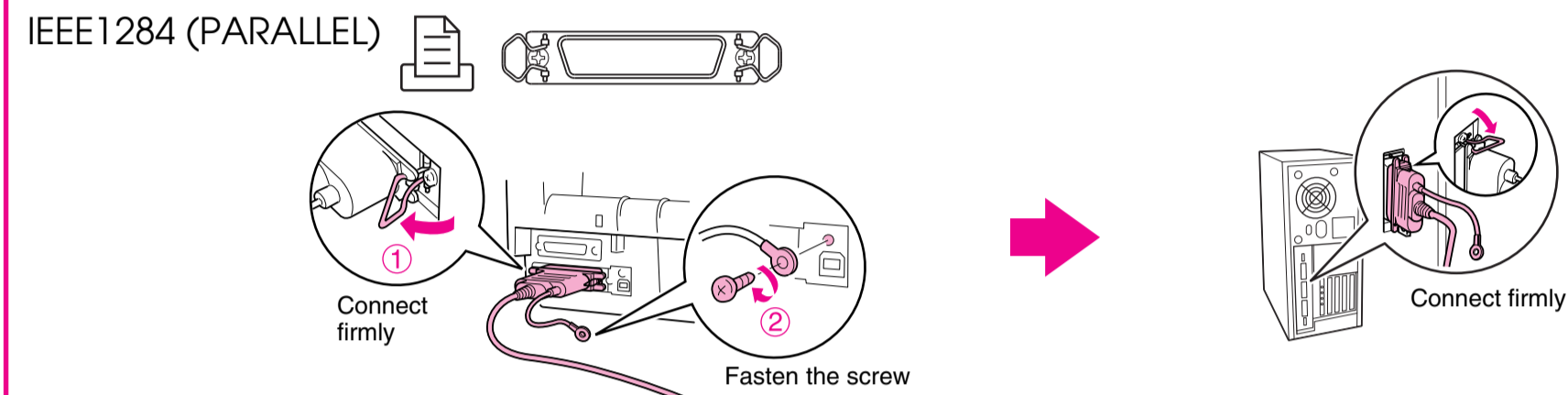
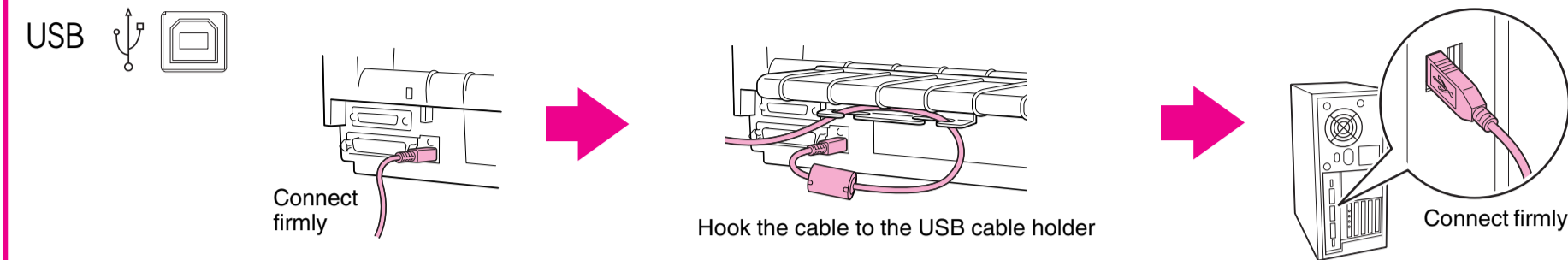


Connecting the Power Cord

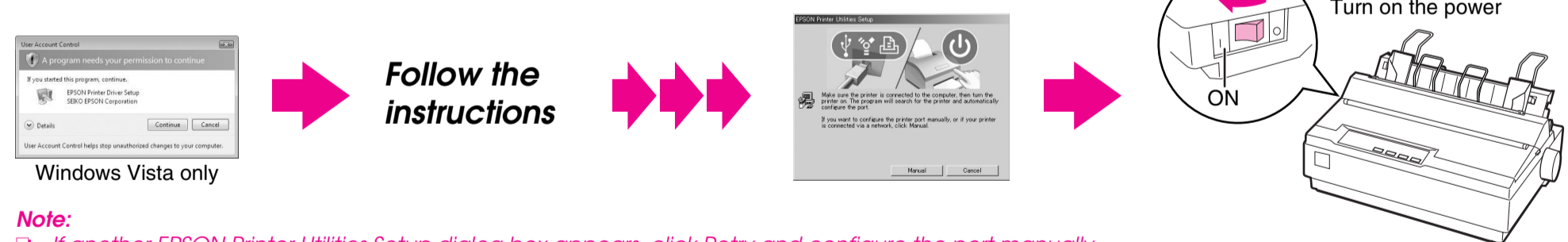
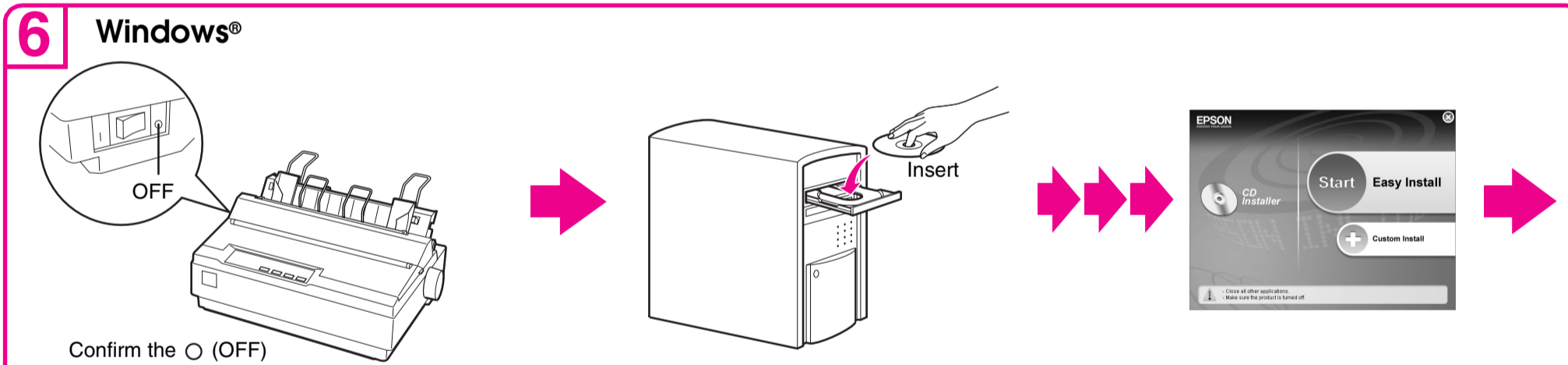


Connecting the Printer to Your Computer

5 **Caution:** The interface cable connectors have only one correct orientation. Make sure the orientation of the connector is correct before inserting it into the appropriate port.



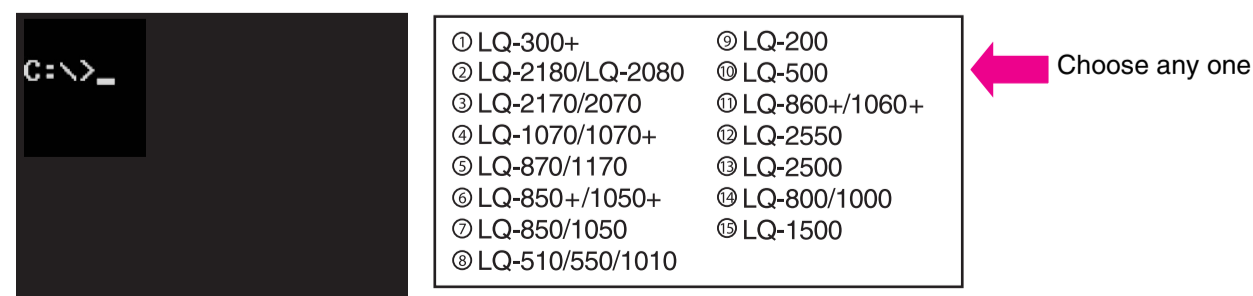
Installing the Printer Software



Note:

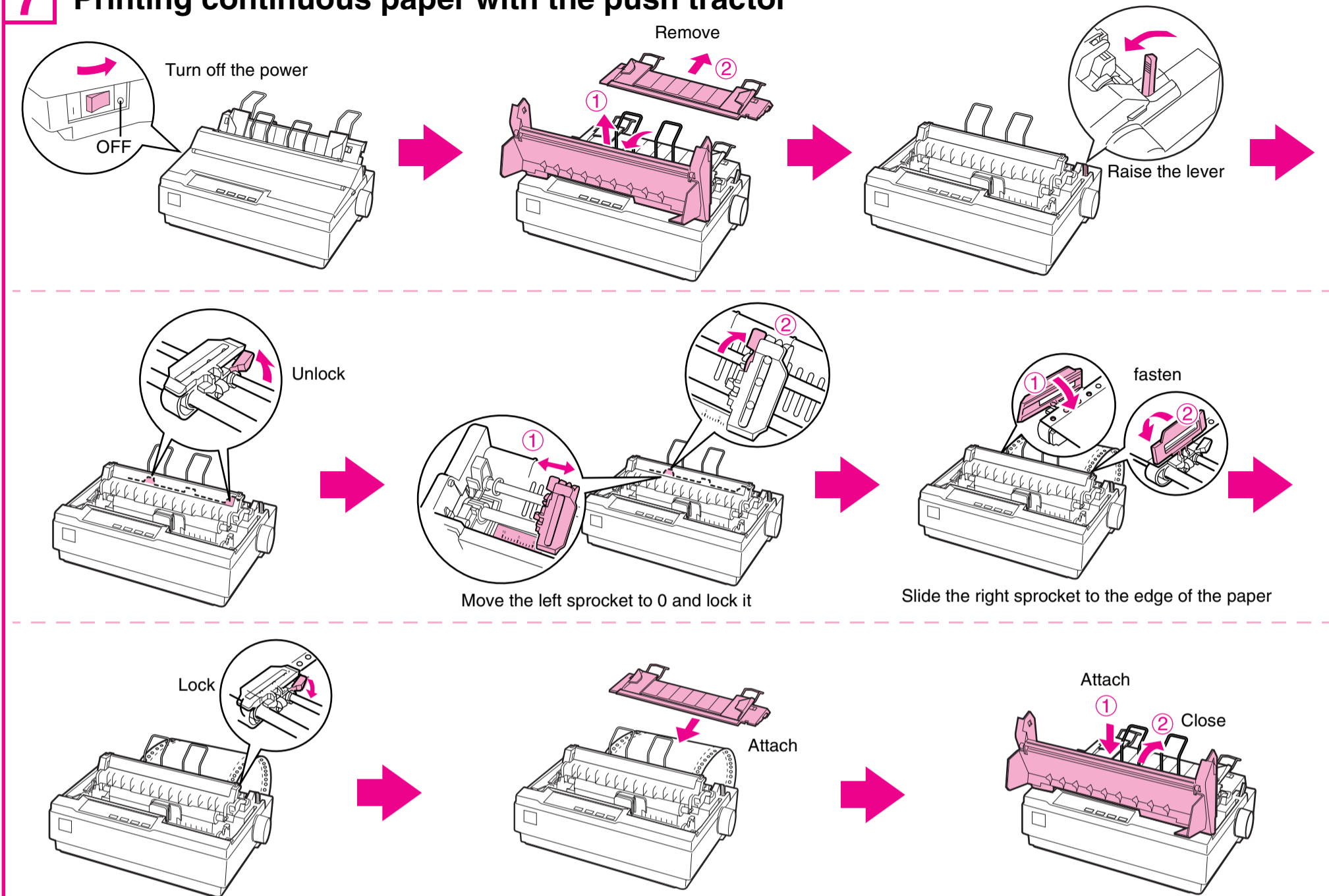
- If another EPSON Printer Utilities Setup dialog box appears, click **Retry** and configure the port manually.
- Installing the printer software for Windows XP, 2000, or Windows NT 4.0 may require administrator privileges. If you have problems, ask your administrator for more information.
- The Windows CD may be required when you install the printer software. If prompted, follow the on-screen instructions and insert the Windows CD.

DOS

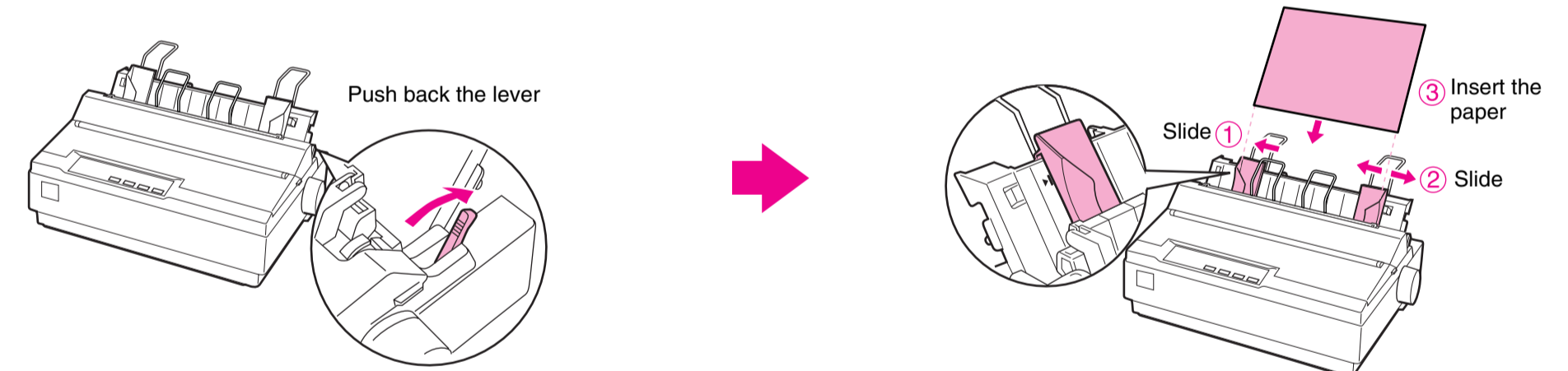


Loading Paper

7 Printing continuous paper with the push tractor



Printing on single sheets



8 Now setup is finished and the printer is ready.

For detailed information about the printer and troubleshooting, refer to the User's Guide by clicking the icon shown below on your computer screen.



If you cannot find the information you require in the User's Guide, visit our Web site:

<http://www.epson.com>

No part of this publication may be reproduced, stored in a retrieval system, or transmitted in any form or by any means, electronic, mechanical, photocopying, recording, or otherwise, without the prior written permission of Seiko Epson Corporation. No patent liability is assumed with respect to use of the information contained herein. Neither is any liability assumed for damages resulting from the use of the information contained herein.

Neither Seiko Epson Corporation nor its affiliates shall be liable to the purchaser of this product or third parties for damages, losses, costs, or expenses incurred by the purchaser or third parties as a result of: accident, misuse, or abuse of this product or unauthorized modifications, repairs, or alterations to this product, or (excluding the U.S.) failure to strictly comply with Seiko Epson Corporation's operating and maintenance instructions.

Seiko Epson Corporation and its affiliates shall not be liable against any damages or problems arising from the use of any options or any consumable products other than those designated as Original Epson Products or Epson Approved Products by Seiko Epson Corporation.

EPSON is a registered trademark of Seiko Epson Corporation.

Microsoft®, Windows®, and Windows NT® are registered trademarks of Microsoft Corporation in the United States and/or other countries.

General Notice: Other product names used herein are for identification purposes only and may be trademarks of their respective owners. Epson disclaims any and all rights in those marks.

Copyright © 2007 Seiko Epson Corporation. All rights reserved.
Printed in XXXX XX.XX-XX XXX

Continued