

# LQ-1150 II Start Here



**EPSON**  
EXCEED YOUR VISION

## Unpacking

**1**

Remove all protective tape

It may come attached to the printer in some countries. The shape of the plug may vary by location.

Start Here

## Assembling the Printer

**2**

Hook

Raise to set

Insert

**Caution:**  
This part is not a handle. Do not hold it to move the printer.

Pull upright and push firmly

Attach

Attach

Continued

## Connecting the Power Cord

**3**

Confirm the ○ (OFF)

Connect

Plug in

## Connecting the Printer to Your Computer

**4**

**Caution:**

- The interface cable connectors have only one correct orientation. Make sure the orientation of the connector is correct before inserting it into the appropriate port.
- Do not connect or disconnect the printer while it is turning on.

**USB**

Connect firmly

Hook the cable to the USB cable holder

Connect firmly

**IEEE1284 (PARALLEL)**

Connect firmly

Fasten the screw

Connect firmly and fasten

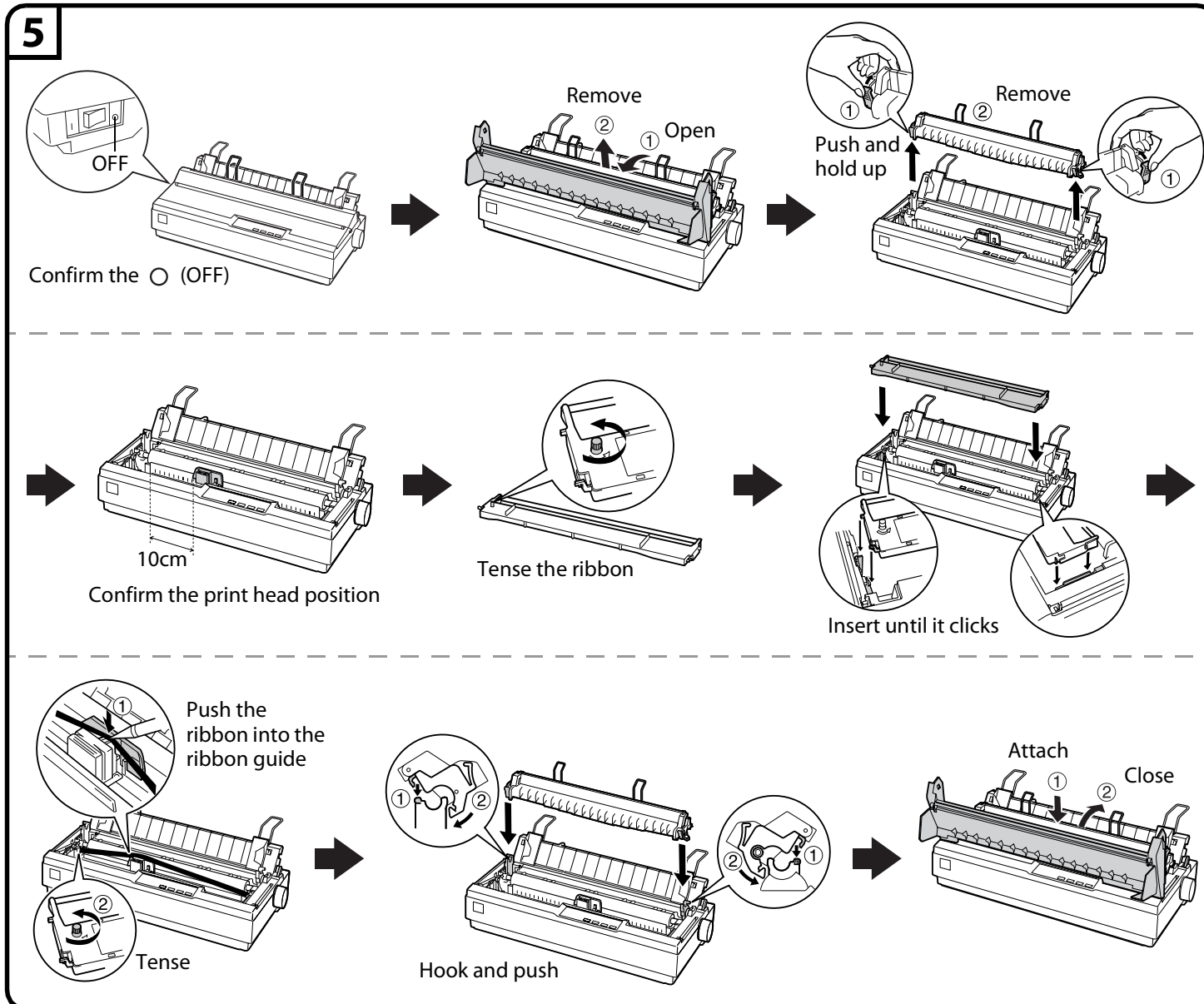
**RS-232C (SERIAL)**

Connect firmly and fasten

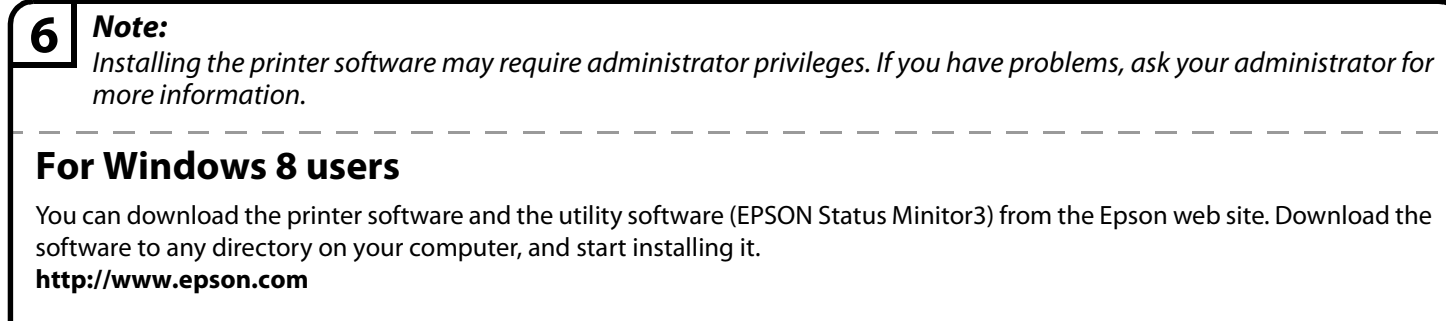
Connect firmly and fasten

Continued on back

## Installing the Ribbon Cartridge



## Installing the Printer Software



### For Windows 7 users

The printer driver in the printer software CD-ROM included with this printer is not compatible with Windows 7. Use the driver included in Windows 7. Perform the following operations to install the driver included in Windows 7.

#### To install the driver (use the driver included with the operating system)

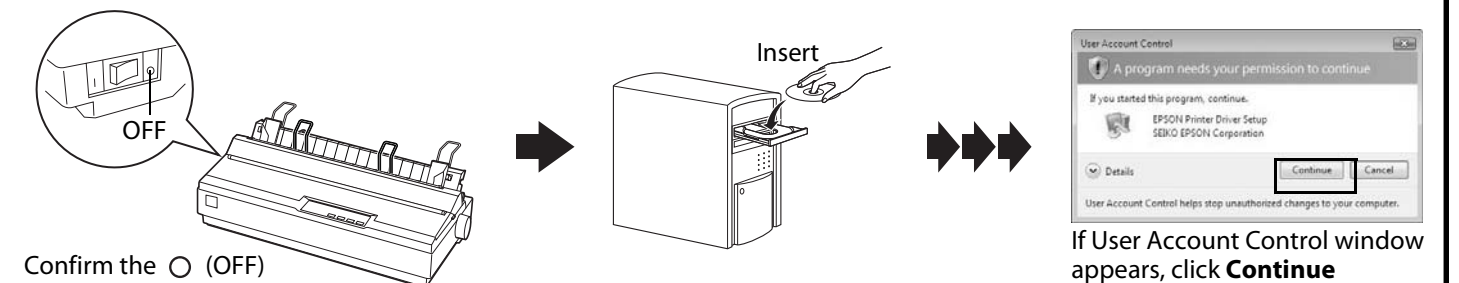
1. Make sure both the printer and your computer are turned off, then connect the printer and computer.
2. Turn on the printer.
3. Turn your computer on and start Windows 7.
4. The printer is detected and the driver included in Windows 7 is installed automatically.

#### Note:

EPSON Status Monitor 2 and EPSON Status Monitor 3 do not support Windows 7. Download the EPSON Status Monitor for the driver included in Windows 7 at the our Web site:

<http://www.epson.com>

### For Windows Vista/XP/2000/Me/98/NT 4.0 users



## Getting More Informations

### 7 Now setup is finished and the printer is ready.

For detailed information about the printer and troubleshooting, refer to the User's Guide by clicking the icon on your computer screen.

If you cannot find the information you require in the User's Guide, visit our Web site:

<http://www.epson.com>



No part of this publication may be reproduced, stored in a retrieval system, or transmitted in any form or by any means, electronic, mechanical, photocopying, recording, or otherwise, without the prior written permission of Seiko Epson Corporation. No patent liability is assumed with respect to use of the information contained herein. Neither is any liability assumed for damages resulting from the use of the information contained herein. Neither Seiko Epson Corporation nor its affiliates shall be liable to the purchaser of this product or third parties for damages, losses, costs, or expenses incurred by the purchaser or third parties as a result of: accident, misuse, or abuse of this product or unauthorized modifications, repairs, or alterations to this product, or (excluding the U.S.) failure to strictly comply with Seiko Epson Corporation's operating and maintenance instructions. Seiko Epson Corporation and its affiliates shall not be liable against any damages or problems arising from the use of any options or any consumable products other than those designated as Original Epson Products or Epson Approved Products by Seiko Epson Corporation. EPSON and EXCEED YOUR VISION are registered trademarks of Seiko Epson Corporation. Microsoft®, Windows®, Windows NT®, and Windows Vista® are registered trademarks of Microsoft Corporation in the United States and/or other countries.

**General Notice:** Other product names used herein are for identification purposes only and may be trademarks of their respective owners. Epson disclaims any and all rights in those marks.

The contents of this manual are subject to change without notice.

Copyright © 2013Seiko Epson Corporation. All rights reserved.

Printed in XXXXXX

Continued