

# FX-875/FX-2175 Start Here



**EPSON**  
EXCEED YOUR VISION

## Unpacking

**1**

Start Here

It may come attached to the printer in some countries.  
The shape of the plug may vary by location.

## Assembling the Printer

**2**

Confirm the  $\circ$  (OFF) OFF

Remove the printer cover

Remove the paper tension unit

Slide the print head to the middle of the printer by hand

Pull toward you Hold with two fingers

Pull the ribbon guide until it is out of the cartridge

Tense

Slide the ribbon guide into the print head until it clicks in place

Continued

### Caution:

- The ribbon should not be twisted or creased.
- When inserting the ribbon guide, press firmly until it clicks.

Reinstall the paper tension unit

Replace the printer cover and lowering the cover into place

Attach the paper guide

## Connecting the Printer to Your Computer

### 3

#### Caution:

- The interface cable connectors have only one correct orientation. Make sure the orientation of the connector is correct before inserting it into the appropriate port.
- Do not connect or disconnect the printer while it is turning on.

#### USB

Connect firmly

Connect firmly

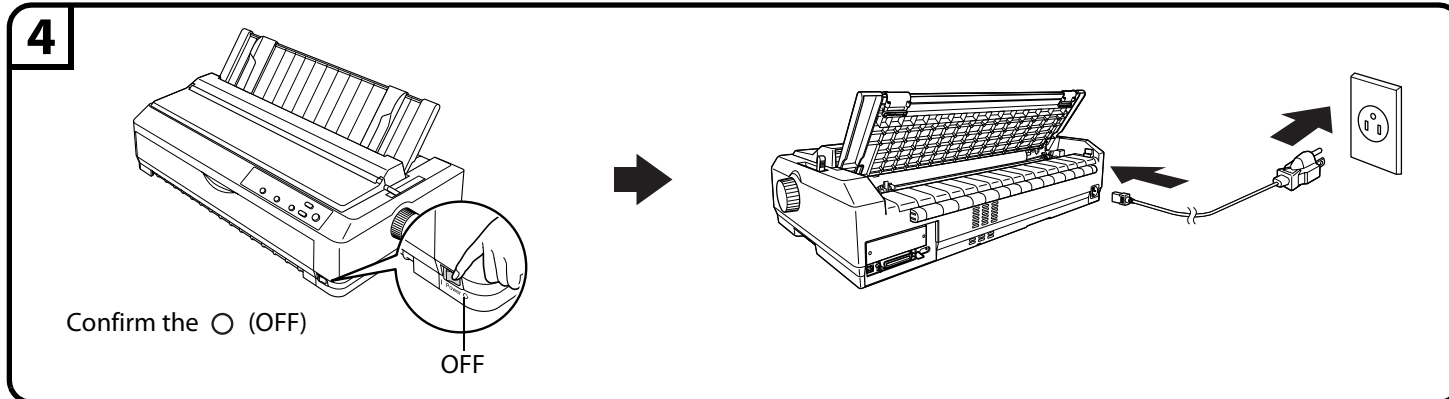
#### IEEE1284 (PARALLEL)

Connect firmly

Connect firmly and fasten

Continued on back

## Connecting the Power Cord



## Installing the Printer Software

**5** **Note:**  
Installing the printer software may require administrator privileges. If you have problems, ask your administrator for more information.

### For FX-875 users/For FX-2175 users (except Windows 7 users)

You can download the printer software and the utility software (EPSON Status Minitor3) from the Epson web site. Download the software to any directory on your computer, and start installing it.

<http://www.epson.com>

### For FX-2175 users in Windows 7

Use the driver included in Windows 7. Perform the following operations to install the driver included in Windows 7.

#### To install the driver (use the driver included with the operating system)

1. Make sure both the printer and your computer are turned off, then connect the printer and computer.
2. Turn on the printer.
3. Turn your computer on and start Windows 7.
4. The printer is detected and the driver included in Windows 7 is installed automatically.

#### Note:

EPSON Status Monitor 3 do not support Windows 7. Download the EPSON Status Monitor for the driver included in Windows 7 at the our Web site:

<http://www.epson.com>

## Getting More Informations

### **6** Now setup is finished and the printer is ready.

The User's Guide provides detailed information on the printer's functions, optional products, printer software, troubleshooting, and technical specifications.

You can see the User's Guide from the Epson web site.

<http://www.epson.com>

If you cannot find the information you require in the User's Guide, visit our Web site:

<http://www.epson.com>

## Important Safety Instructions

**7**

Read all of these safety instructions before using the printer. In addition, follow all warnings and instructions marked on the printer itself.

#### **Caution:**

Be sure the AC power cord meets the relevant local safety standards.

- Use only the type of power source indicated on the printer's label.
- Connect all equipment to properly grounded power outlets.
- Do not use a damaged or frayed power cord.
- If you use an extension cord with the printer, make sure the total ampere rating of all devices plugged into the extension cord does not exceed the cord's ampere rating. Also, make sure the total ampere of all devices plugged into the wall outlet does not exceed the wall outlet's ampere rating.
- Unplug the printer before cleaning it, and always clean it with a piece of damp cloth only.
- Do not spill liquid onto the printer.
- Except as specifically explained in this guide, do not attempt to service the printer yourself.
- Unplug the printer and refer servicing to qualified service personnel under the following conditions:
  - i. If the power cord or plug is damaged.
  - ii. If liquid has entered the printer.
  - iii. If the printer has been dropped or the cabinet damaged.
  - iv. If the printer does not operate normally or exhibits a distinct change in performance.

#### Choosing a Place for the Printer

- Do not place the printer on an unstable surface or near a radiator or heat source.
- Do not block or cover the slots and openings in the printer's cabinet, and do not insert objects through the slots.
- Place the printer on a flat, stable surface. The printer will not operate properly if it is tilted or placed at an angle.
- Place the printer where you can easily connect it to a network interface cable, if necessary.
- Leave adequate room around the printer for easy operation and maintenance.
- Avoid using or storing the printer in places subject to rapid changes in temperature and humidity. Keep it away from direct sunlight, strong light, heat sources, or excessive moisture or dust.
- Avoid places subject to shocks and vibrations.
- Place the printer near a wall outlet where you can easily unplug the power cord.
- Keep the entire computer system away from potential sources of electromagnetic interference, such as loudspeakers or the base units of cordless telephones.
- Avoid electrical outlet controlled by wall switches or automatic timers. An interruption in power can erase information in the memory of your printer or computer. Also avoid outlets on the same circuit as large motors or other appliances that can cause voltage fluctuations.
- Use a grounded power outlet; do not use an adapter plug.
- If you plan to use a printer stand, follow these guidelines:
  - Use a stand that can support at least 28 kg (61.7 lb).
  - Never use a stand that tilts the printer. The printer should always be kept level.
  - Position your printer's power cord and interface cable so they do not interfere with paper feeding. If possible, secure the cables to a leg of the printer stand.

No part of this publication may be reproduced, stored in a retrieval system, or transmitted in any form or by any means, electronic, mechanical, photocopying, recording, or otherwise, without the prior written permission of Seiko Epson Corporation. No patent liability is assumed with respect to use of the information contained herein.

Neither is any liability assumed for damages resulting from the use of the information contained herein.

Neither Seiko Epson Corporation nor its affiliates shall be liable to the purchaser of this product or third parties for damages, losses, costs, or expenses incurred by the purchaser or third parties as a result of: accident, misuse, or abuse of this product or unauthorized modifications, repairs, or alterations to this product, or (excluding the U.S.) failure to strictly comply with Seiko Epson Corporation's operating and maintenance instructions.

Seiko Epson Corporation and its affiliates shall not be liable against any damages or problems arising from the use of any options or any consumable products other than those designated as Original Epson Products or Epson Approved Products by Seiko Epson Corporation.

EPSON and EXCEED YOUR VISION are registered trademarks of Seiko Epson Corporation.

Microsoft®, Windows®, Windows NT®, and Windows Vista® are registered trademarks of Microsoft Corporation in the United States and/or other countries.

**General Notice:** Other product names used herein are for identification purposes only and may be trademarks of their respective owners.

Epson disclaims any and all rights in those marks.

The contents of this manual are subject to change without notice.

Copyright © 2012 Seiko Epson Corporation. All rights reserved.

Printed in XXXXXX