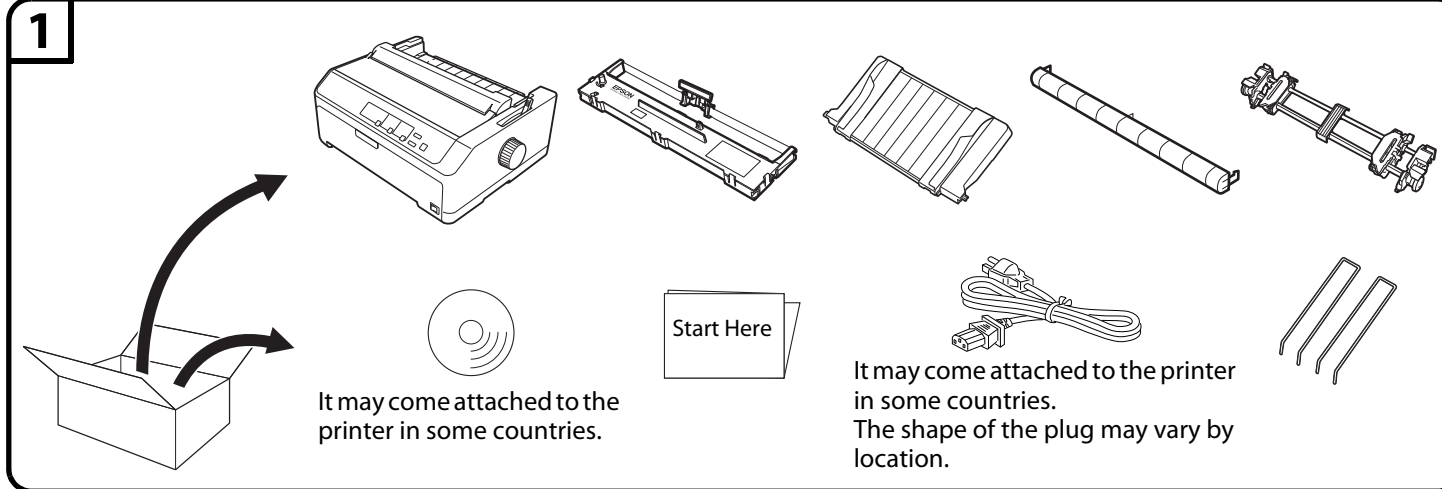


FX-2175II N

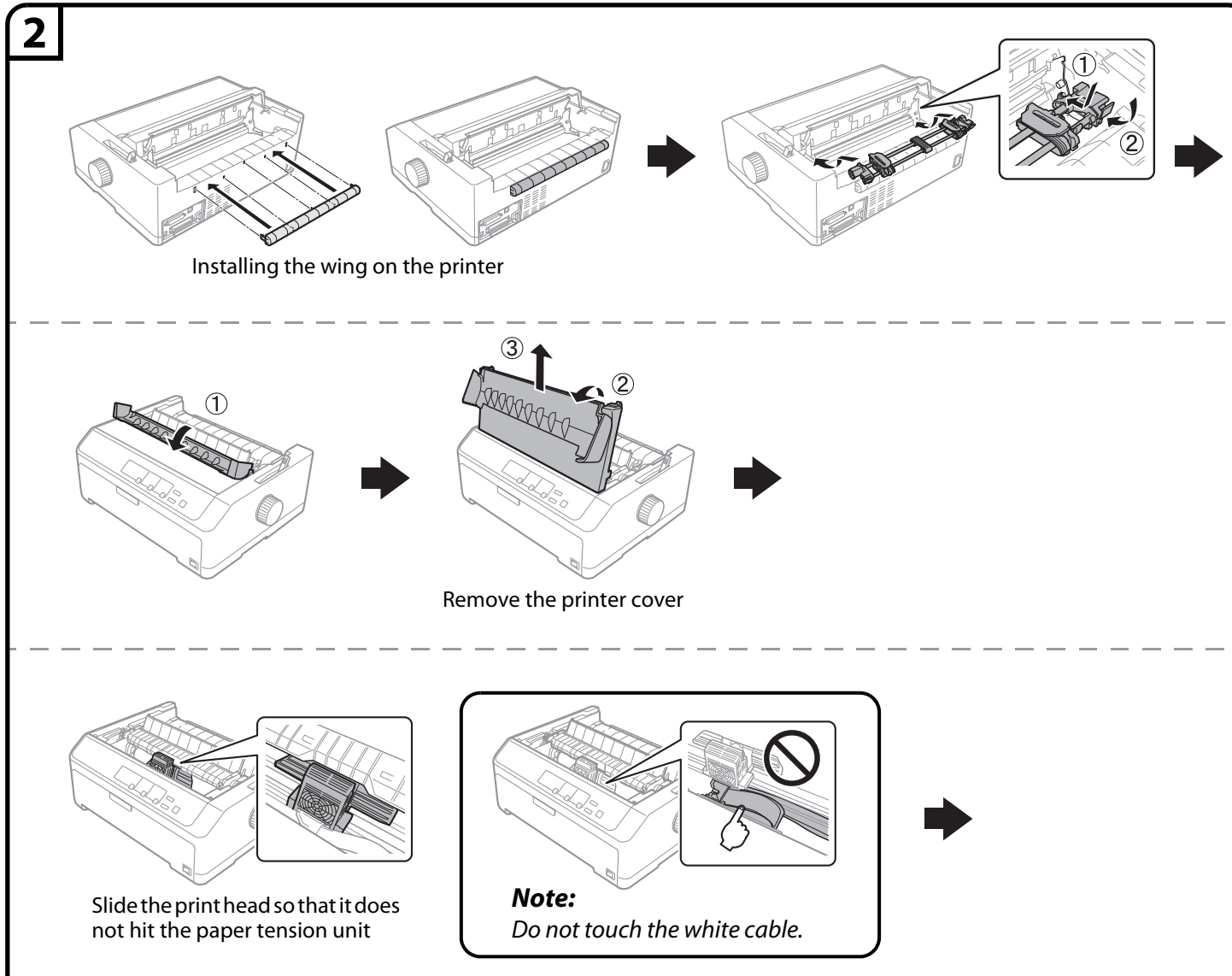
Start Here



Unpacking

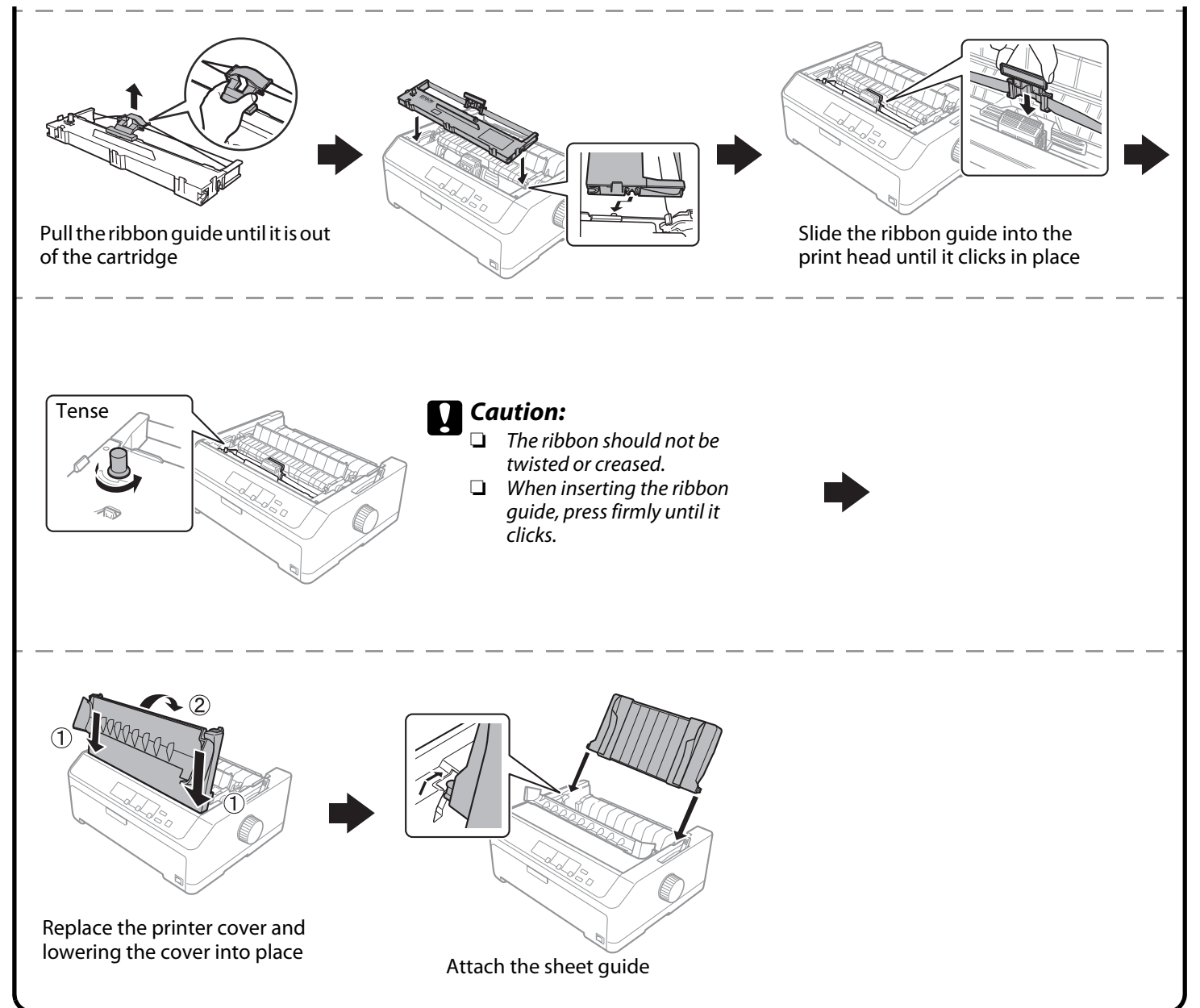


Assembling the Printer

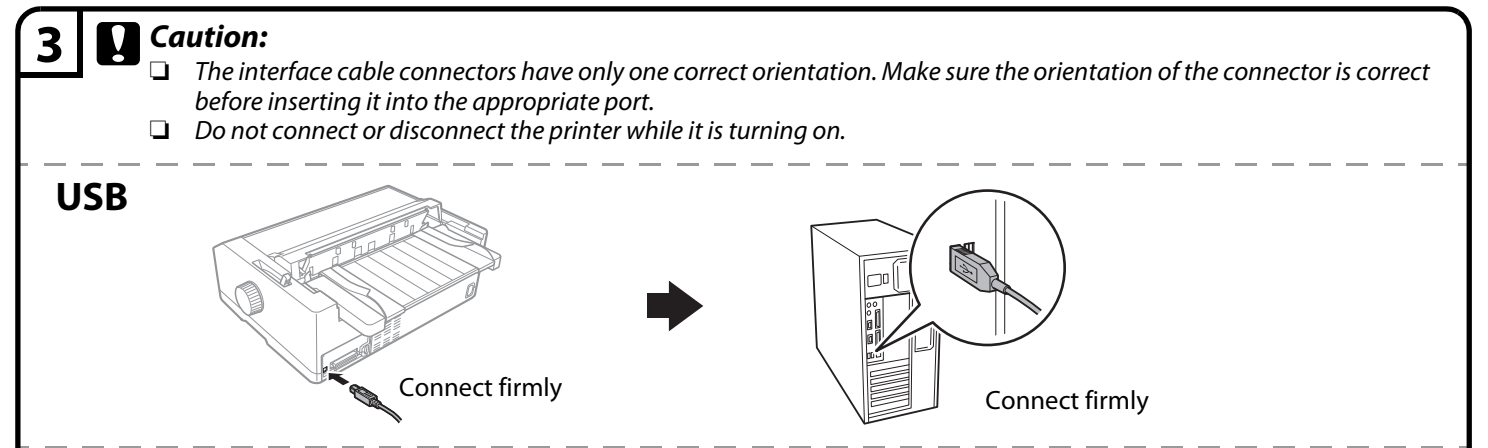


Continued ➡

EPSON
EXCEED YOUR VISION

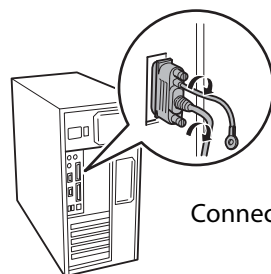
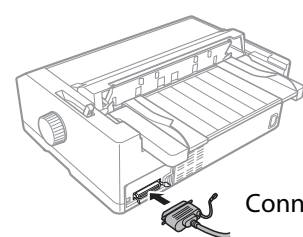


Connecting the Printer to Your Computer



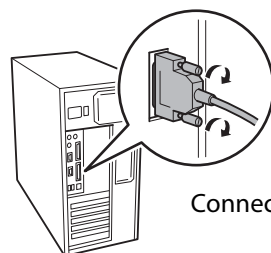
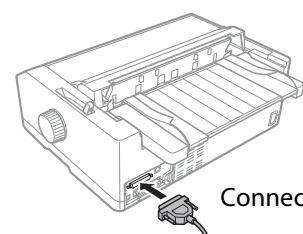
Continued on back ➡

IEEE1284 (PARALLEL)



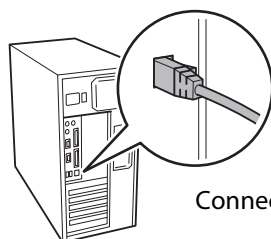
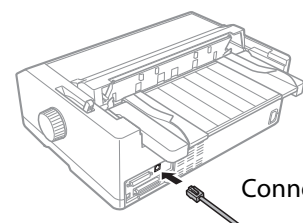
Connect firmly and fasten

SERIAL



Connect firmly and fasten

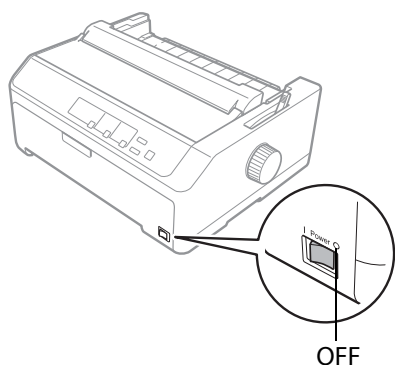
NETWORK (LAN)



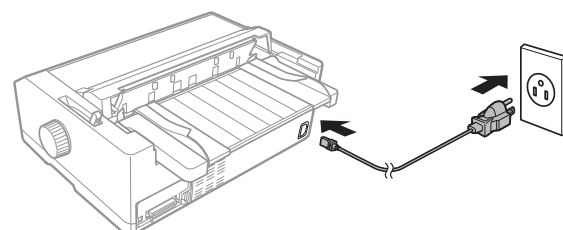
Connect firmly

Connecting the Power Cord

4



OFF



Continued ➡

Installing the Printer Software

5 **Note:**

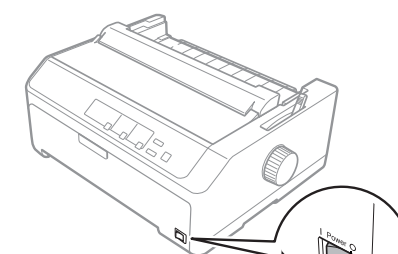
Installing the printer software may require administrator privileges. If you have problems, ask your administrator for more information.

From Web site

You can download the printer software and the utility software (EPSON Status Monitor3) from the Epson web site. Download the software to any directory on your computer, and start installing it.

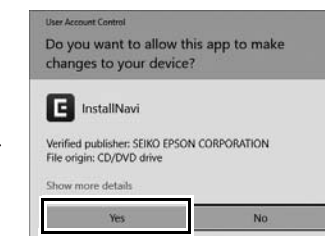
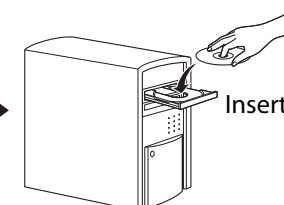
<http://www.epson.com>

From CD-ROM

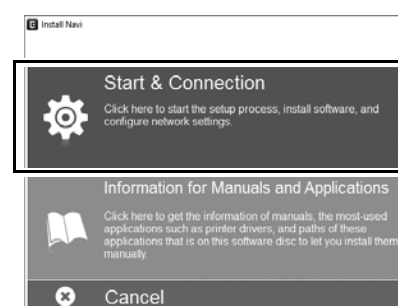


Confirm the ○ (OFF)

OFF



If User Account Control window appears, click **Yes**



Follow the instructions

Getting More Informations

6 **Now setup is finished and the printer is ready.**

For detailed information about the printer and troubleshooting, refer to the *User's Guide*. Select **Information for Manuals and Applications**, then select **Manuals** to see the *User's Guide*.

Note:

The *User's Guide* for the FX-2175IIN is shared with the FX-2175II *User's Guide*.

If you cannot find the information you require in the *User's Guide* and *Network Guide*, visit our Web site:

<http://www.epson.com>

The contents of this manual are subject to change without notice.

Illustrations of the printer used in this manual are examples only. Although there may be slight differences depending on the model, the method of operation is the same.