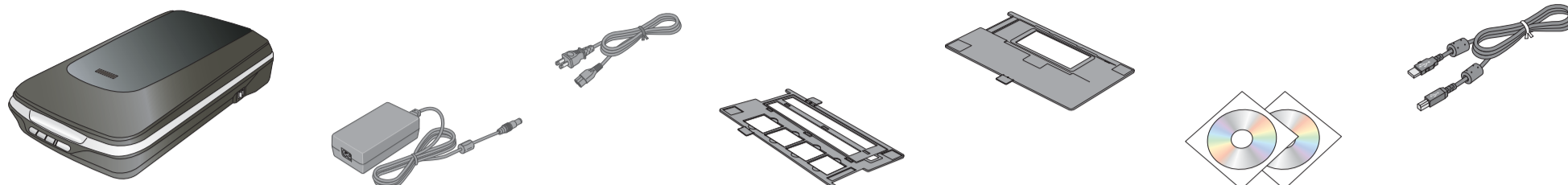




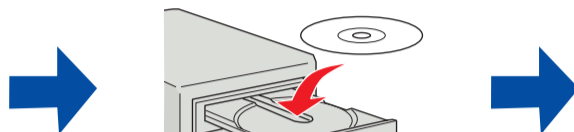
1 Unpack



2 Install software

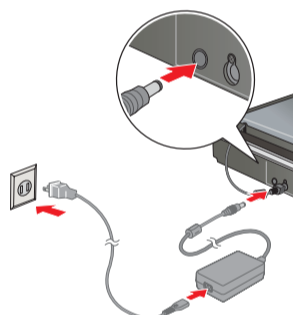
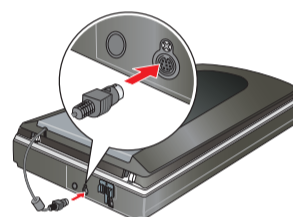
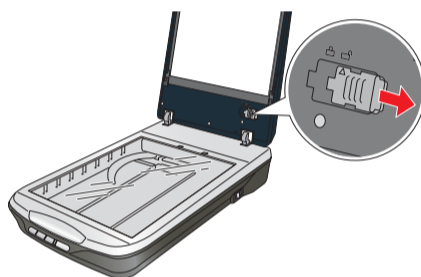
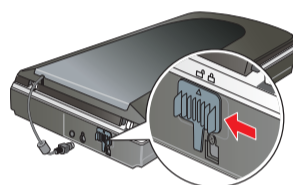


Do not connect the USB cable yet.

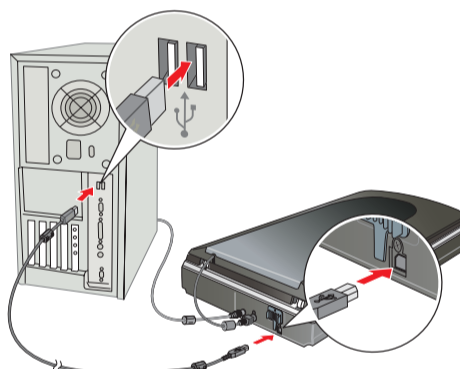


Follow the on-screen instructions and select the default options.

3 Connect and turn on

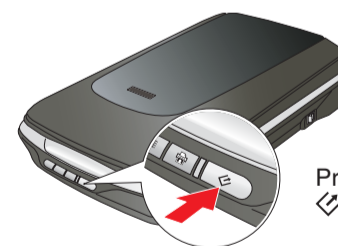
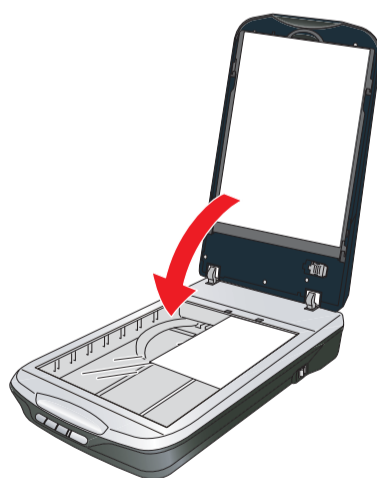


Plug the AC adapter into an electrical outlet.

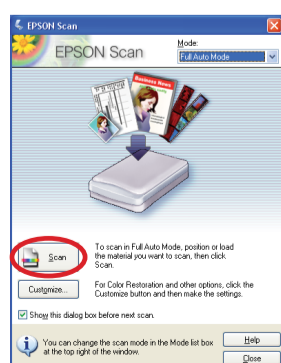


Turn on the scanner.

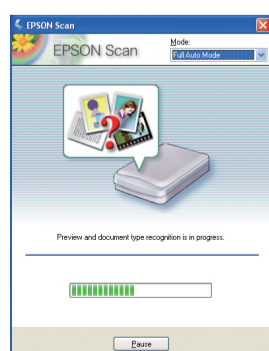
4 Scan a photo



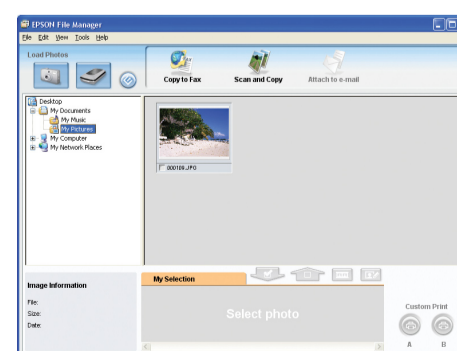
Press the Start button.



Click **Scan**.



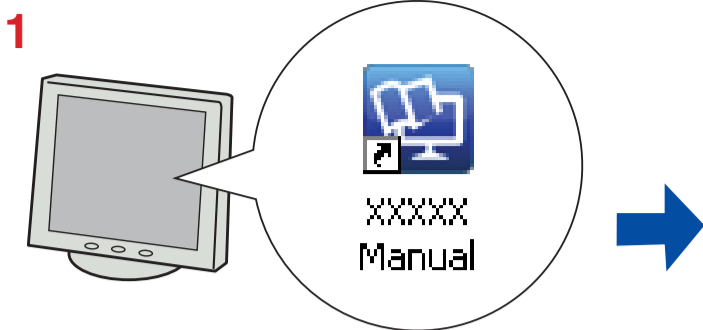
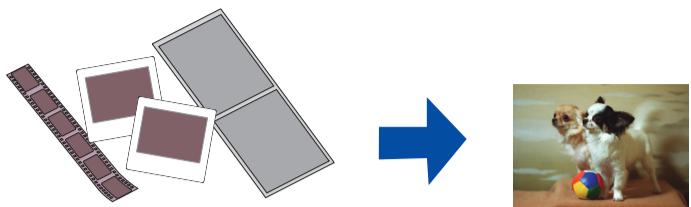
EPSON Scan scans your photo in **Full Auto Mode**. Wait for your scan to finish.



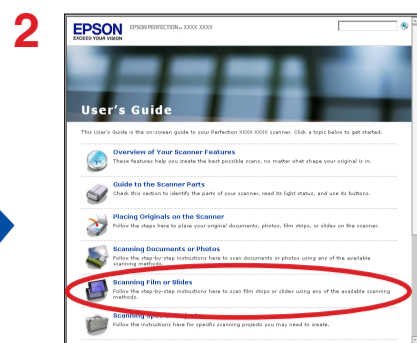
EPSON File Manager opens and displays your scanned photo.

Do more

Scan film or slides

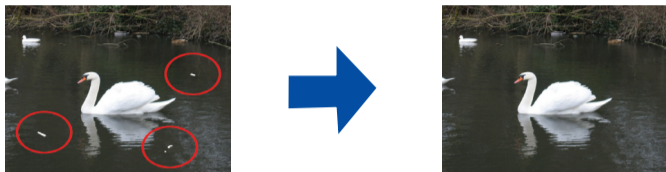


View the on-screen *User's Guide* for instructions.



Click **Scanning Film or Slides**.

Remove dust and scratch marks from film using Digital ICE Technology or Digital ICE Lite Technology



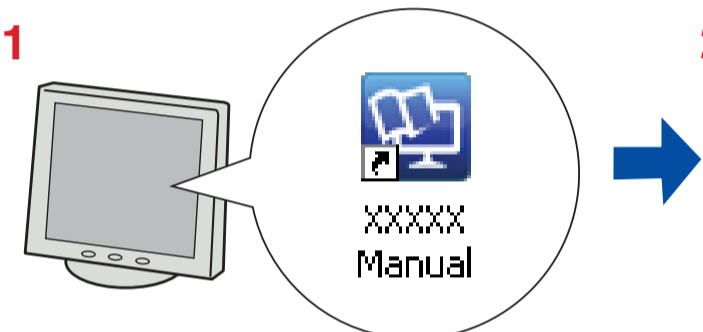
Remove dust from originals



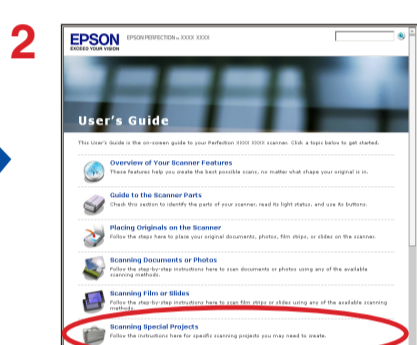
Restore color



Fix photos that are too dark because of backlighting



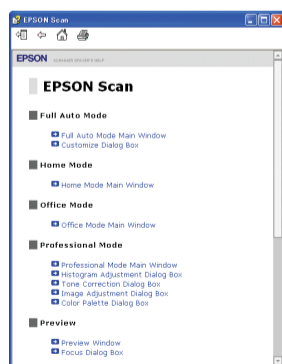
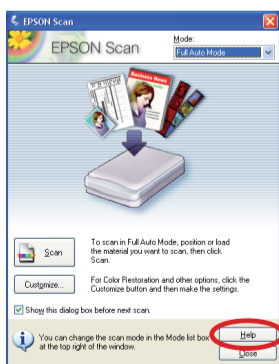
View the on-screen *User's Guide* for instructions.



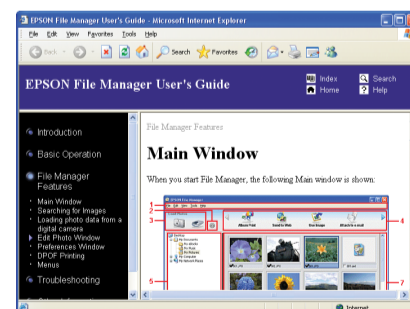
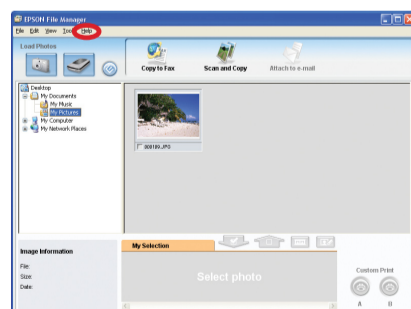
Click **Scanning Special Projects**.

? Help

Epson Scan



Epson File Manager



Open the **Help** menu and select **Epson File Manager User's Guide**.