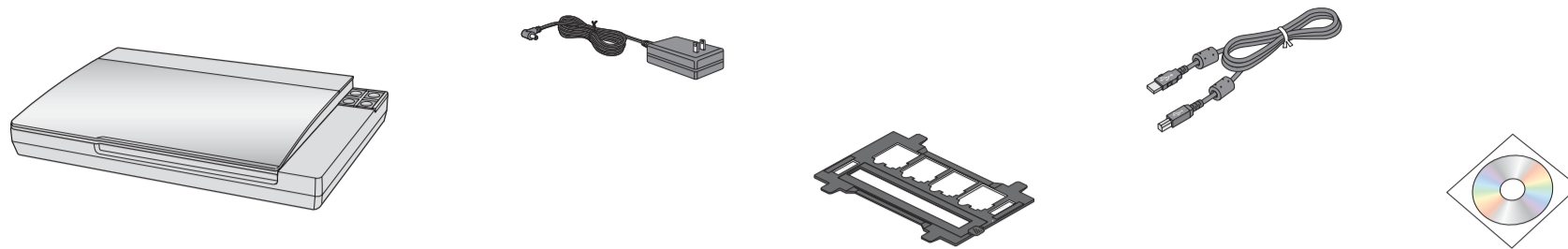
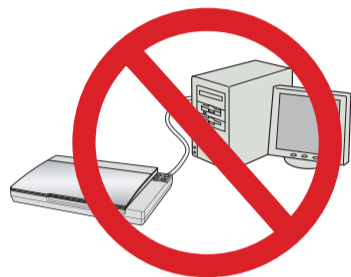




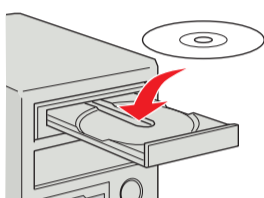
1 Unpack



2 Install software

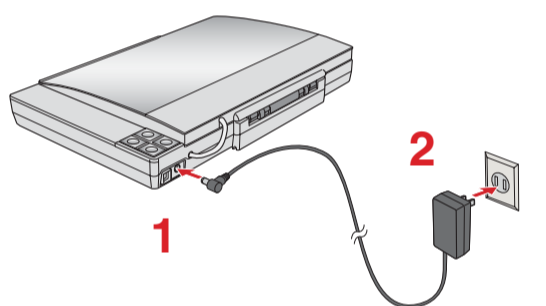


Do not connect the USB cable yet.

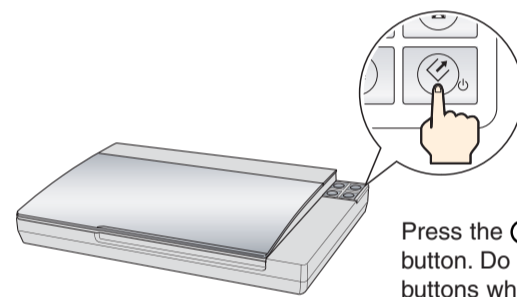
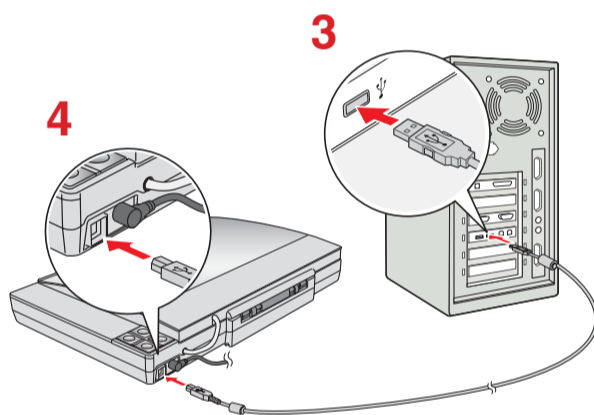


Follow the on-screen instructions and select the default options.

3 Connect and turn on



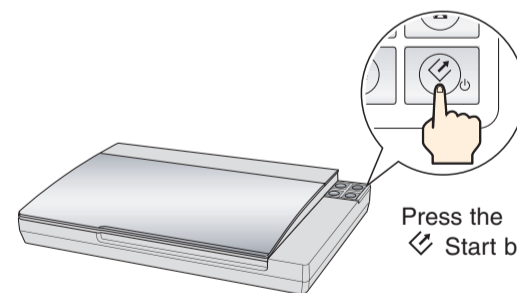
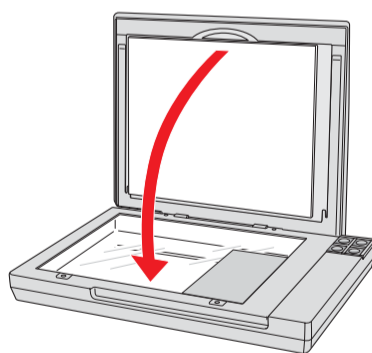
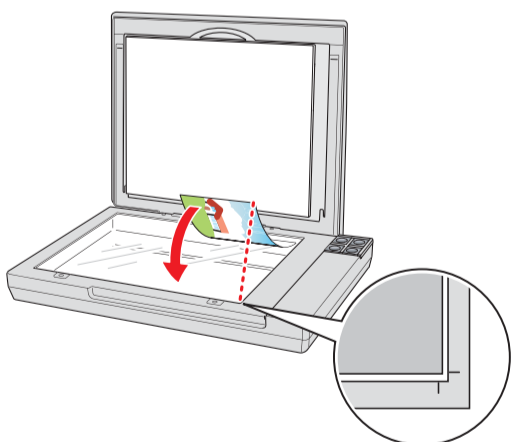
Plug the AC adapter into an electrical outlet.



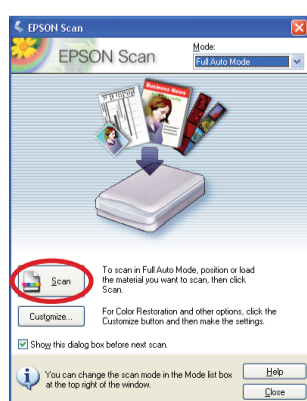
Press the Power button. Do not press any buttons while the status light is flashing.

Note: To turn off the scanner press and hold the Power button for 3 seconds.

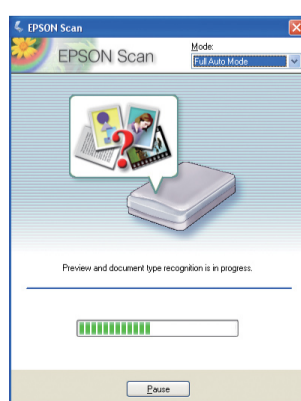
4 Scan a photo



Press the Start button.



Click **Scan**.



EPSON Scan scans your photo in **Full Auto Mode**. Wait for your scan to finish.

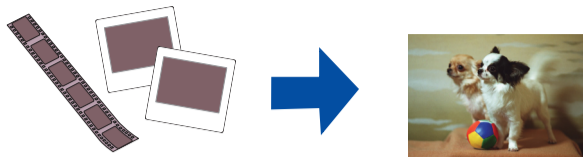


EPSON File Manager opens and displays your scanned photo.

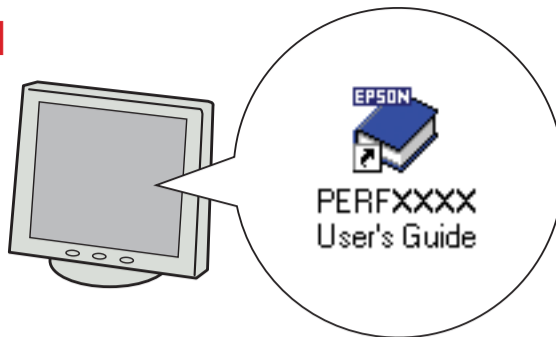


Do more

Scan film or slides

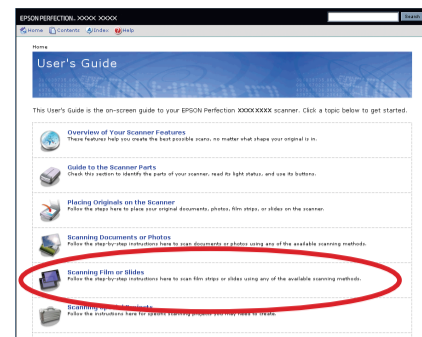


1



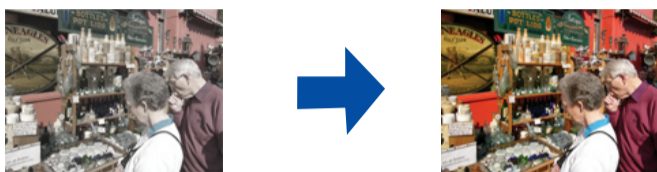
View the on-screen *User's Guide* for instructions.

2



Click **Scanning Film or Slides**.

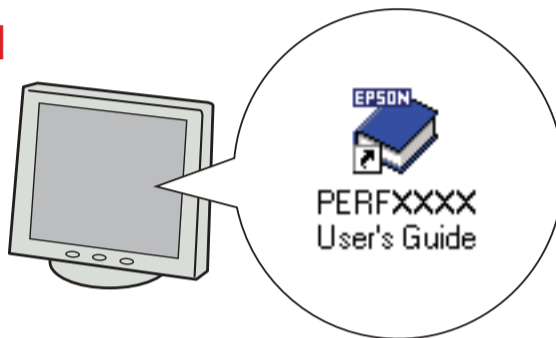
Restore color



Remove dust from originals

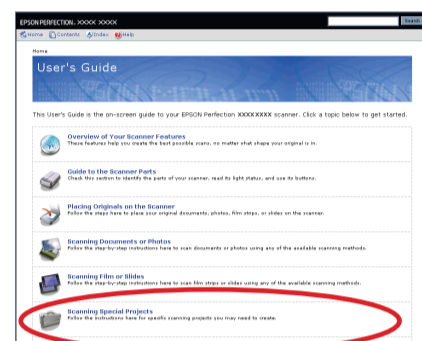


1



View the on-screen *User's Guide* for instructions.

2



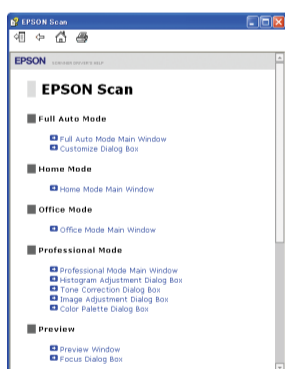
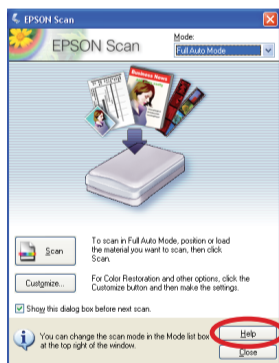
Click **Scanning Special Projects**.

Fix photos that are too dark because of backlighting

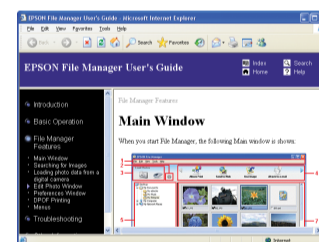
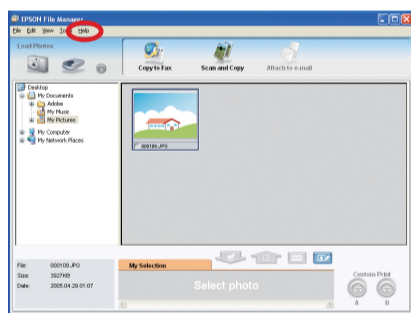


Help

Epson Scan



Epson File Manager



Open the **Help** menu and select **Epson File Manager User's Guide**.