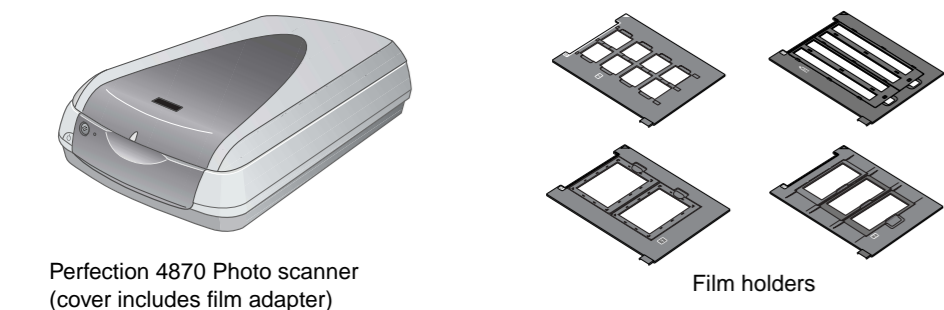


Start Here

EPSON Perfection™ 4870 Photo

1 Unpack Your Scanner

1 Make sure you have all the accessories shown below for your EPSON® scanner:



Perfection 4870 Photo scanner (cover includes film adapter) Film holders



CD-ROM with EPSON Scan driver, software, and electronic manuals Adobe® Photoshop® Elements 2.0 CD-ROM LaserSoft® SilverFast® CD-ROM

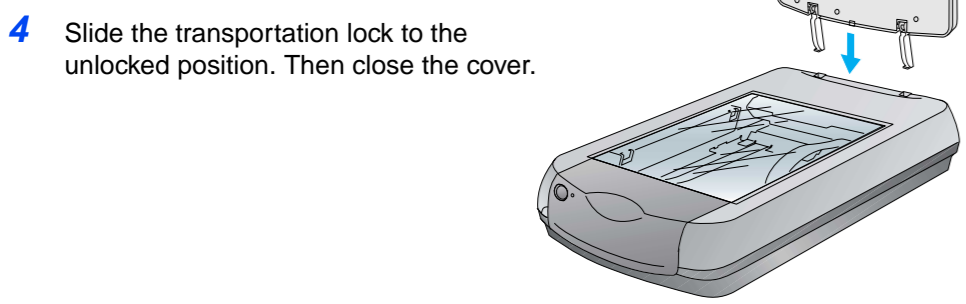
Note: The contents may vary in certain locations. USB cable

2 Remove all the packing tape, but leave the large sticker in place until you are instructed to remove it.



IMPORTANT! Leave the sticker in place until you are instructed to remove it

3 Insert the hinges on the cover into the square holes at the back of the scanner.



4 Slide the transportation lock to the unlocked position. Then close the cover.

2 Install the Software

Wait! You must install your software before connecting the scanner to your computer. The installation process may take several minutes. Be sure to close all open programs and turn off any virus protection programs.

The software works with Windows® 98, Me, 2000, and XP, and Macintosh® OS 8.6 to 9.x and OS X 10.2.x. Follow the steps below (for Windows), or the steps in the next column (for Macintosh).

Note: If you don't already have Adobe Photoshop or Photoshop Elements on your computer, install Photoshop Elements from the CD-ROM included with your scanner.

Windows

- 1 Insert the scanner software CD-ROM in the CD-ROM or DVD drive. The installer starts automatically. If it doesn't start, do the following:
 - Windows XP: Click **Start**, click **My Computer**, then double-click **EPSON**.
 - Windows 98, Me, and 2000: Double-click **My Computer**, then double-click **EPSON**.
- 2 When you see the message about disabling your antivirus software, click **Continue**.
- 3 If you are prompted to select a language, select your preferred language.

- 4 Read the license agreement, then click **Agree**.
- 5 At the Software Installation screen, click **Install**.



- 6 Follow the on-screen instructions to install each program, including ABBYY® FineReader.® Note that EPSON Smart Panel™ installs in several steps.
- 7 At the end of the installation, click **Exit**.

Install LaserSoft SilverFast, following the instructions included with the program. Then follow the instructions in section 3 below to connect the scanner.

Macintosh

Note: EPSON Scan does not support the UNIX File System (UFS) for Mac OS X. You must install the software on a disk or in a partition that does not UFS.

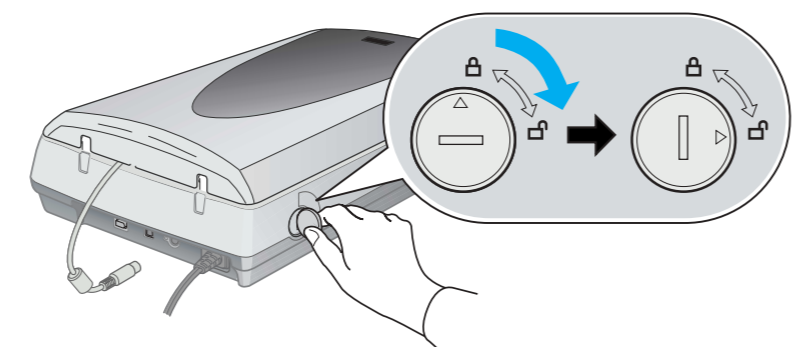
- 1 Insert the scanner software CD-ROM in the CD-ROM or DVD drive. The installer starts automatically. If it doesn't start, double-click the **EPSON** CD-ROM icon.
- 2 If you are using Mac OS X, double-click the **Mac OS X** folder in the **EPSON** folder, then double-click the **EPSON** icon. If you are using Mac OS 8.6 to 9.x, double-click the **EPSON** icon in the **EPSON** folder.
- 3 When you see the message about disabling your antivirus software, click **Continue**.
- 4 If you are prompted to select a language, select your preferred language.
- 5 If you see a license agreement, click **Agree** to continue.
- 6 At the Software Installation screen, click **Install**. Enter your Administrator name and password if necessary. **Note:** If you're installing on Macintosh OS 8.6 to 9.x, you may see a prompt to update your Carbon Library. After the CarbonLib installation is complete and you've restarted your system, double-click the **EPSON** icon, then click **Install** to continue the installation.
- 7 Follow the on-screen instructions to install each program, including ABBYY FineReader. Note that EPSON Smart Panel installs in several steps.
- 8 At the end of the installation, click **Exit**.

Install LaserSoft SilverFast, following the instructions included with the program. Follow the instructions below to connect the scanner. Then restart your system to fully activate the scanner and software.

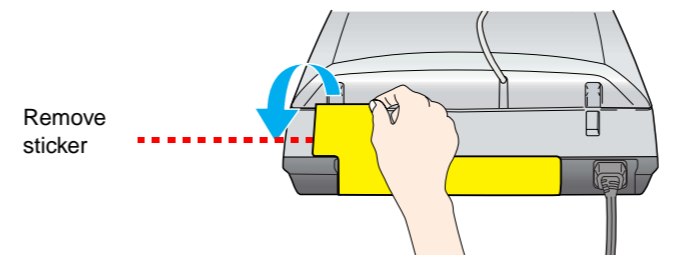
3 Connect the Scanner

After your software is installed, it's time to get connected.

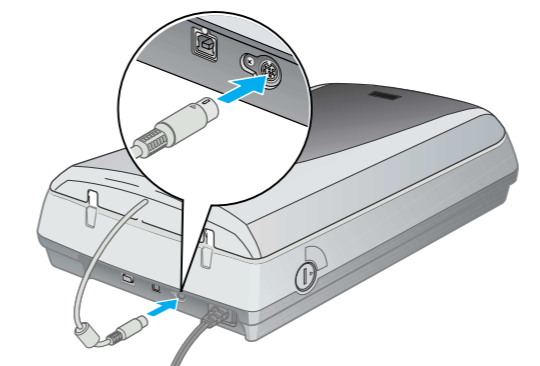
- 1 Remove the sticker from the transportation lock. Use a coin to turn the lock clockwise one-quarter turn to unlock the scanner carriage.



- 2 Remove the sticker from the back of the scanner.



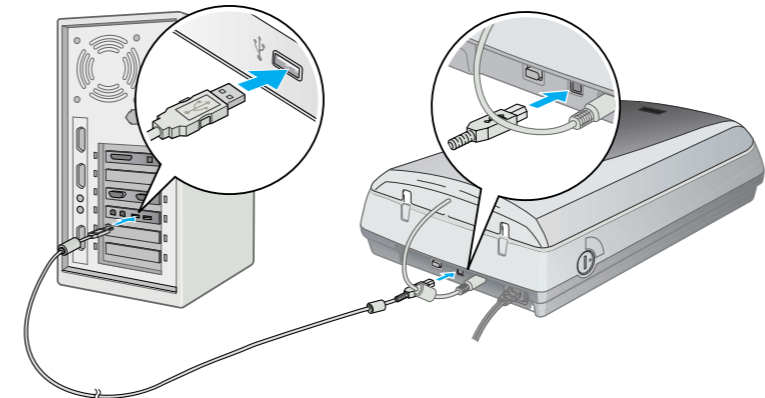
- 3 Connect the cable for the built-in film adapter (scanner cover).



- 4 Connect either the USB cable that came with the scanner or an optional IEEE 1394 (FireWire) cable. **Do not connect both cables.**

If you're using USB

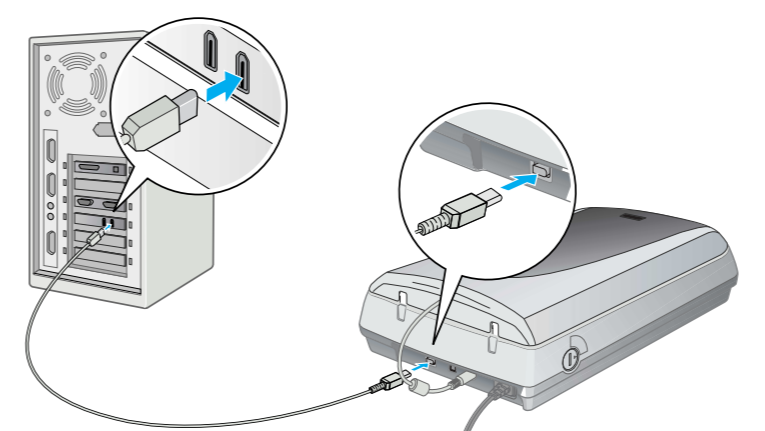
Plug the square end of the USB cable into the scanner's USB port. Then plug the flat end into any available USB port on your computer or hub.



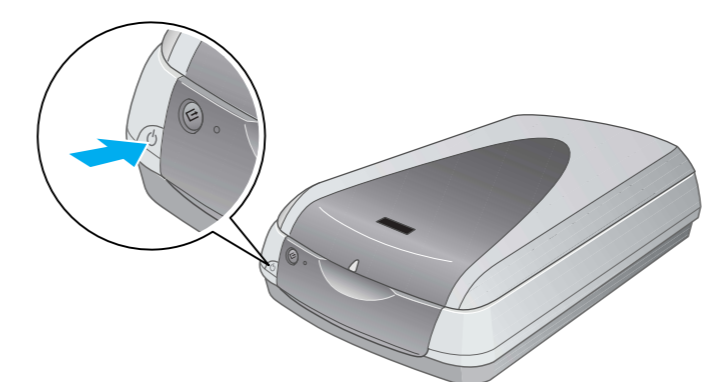
Note: Your scanner may not work correctly if you use a USB cable other than the one supplied by EPSON or if you connect your scanner through more than one hub.

If you're using IEEE 1394 (FireWire)

Plug one end of the IEEE 1394 cable (not included) into the scanner's IEEE 1394 port. Then plug the other end into the IEEE 1394 (FireWire, iLink) port on your computer.



- 5 Plug the scanner's power cord into an electrical outlet.
- 6 Make sure the cover is closed, then press the power button on the front of the scanner to turn it on.



The scanner turns on and the indicator light flashes green. It stops flashing and turns green when the scanner is ready.

Scanner Basics

To scan a photograph, raise the scanner cover and place the photo face down on the glass. Make sure the top right corner of the photo is positioned in the top right corner of the scanner.



Then close the cover.

You can scan using EPSON Smart Panel by pressing the Start button, or you can use EPSON Scan. If you have any problems in scanning, please refer to the electronic Scanner Reference Guide.

Scanning with the Start Button

Press the Start button on your scanner.



Note: In Windows XP, you will see a message the first time you press the Start button. Select **EPSON Smart Panel**, click **Always use this program for this action**, then click **OK**.

EPSON Smart Panel opens on your computer.



Click one of the buttons for the type of scan you want, then follow the on-screen instructions.

Scanning with EPSON Scan

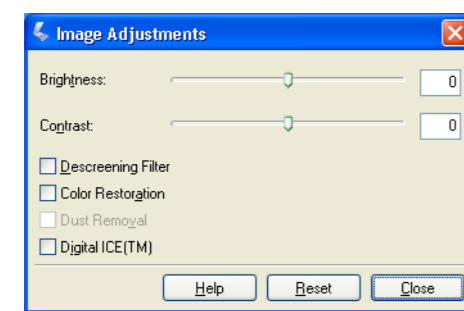
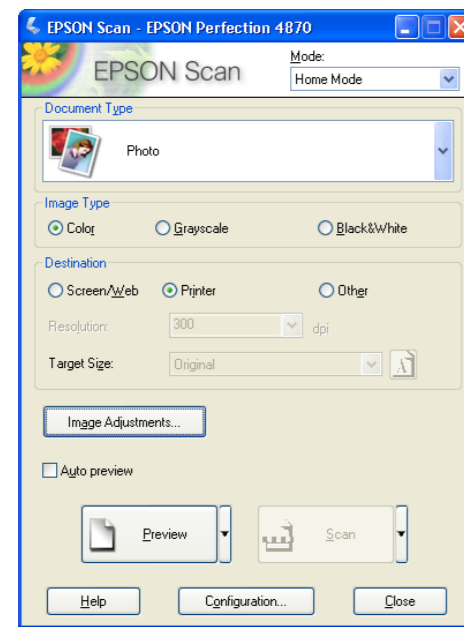
You can start EPSON Scan from Adobe Photoshop Elements or any other TWAIN-compliant program. You can also start the EPSON Scan program directly from your computer.

- EPSON Scan has three scanning modes:
- **Full Auto Mode** for automatic control of scan settings.
 - **Home Mode** for scanning film and more control over scan settings, including Digital ICE.
 - **Professional Mode** for full control over all scan settings.

Fixing and Enhancing Photos

You can use Digital ICE and Color Restoration to automatically fix photos that are faded, scratched, dirty, creased, or torn. Digital ICE and Color Restoration work on photographs, negatives, and film.

- 1 Start EPSON Scan and choose the Home or Professional mode. You see a screen similar to this.
- 2 Click the **Preview** button at the bottom of the screen. Your photo appears in the Preview window.
- 3 Do one of the following:
 - If you're using Home Mode, click the **Image Adjustments** button.
 - If you're using Professional Mode, scroll to the bottom of the screen.



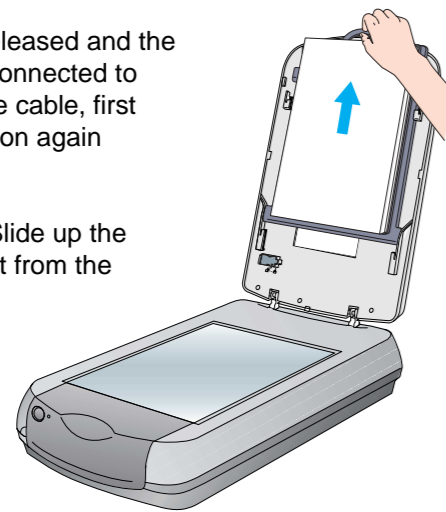
- You see the Image Adjustment settings.
- 4 Select the **Digital ICE** or **Color Restoration** checkbox.
 - If your photo is dirty, scratched, creased, or torn, select **Digital ICE**.
 - If the colors in your photo are faded, select **Color Restoration**.

- 5 Select the thumbnail to be scanned in the Preview window.
- 6 Click the **Scan** button.

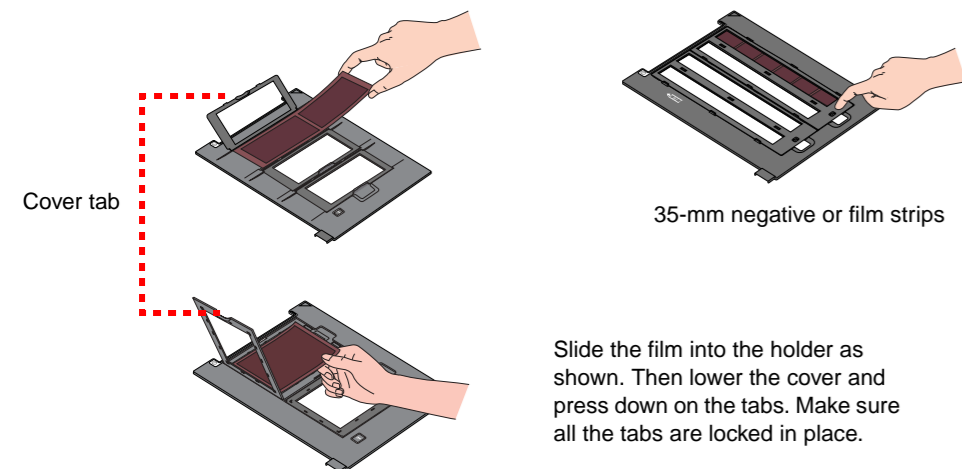
Scanning Film

The scanner cover has a built-in film adapter. To scan film, negatives, or slides, you need to remove the document mat from the cover and insert the film in a holder.

- 1 Make sure the transportation lock is released and the film adapter (scanner cover) cable is connected to the scanner. If you need to connect the cable, first turn the scanner off. Then turn it back on again after you connect the cable.
- 2 Lift the scanner cover all the way up. Slide up the reflective document mat, and remove it from the scanner cover.

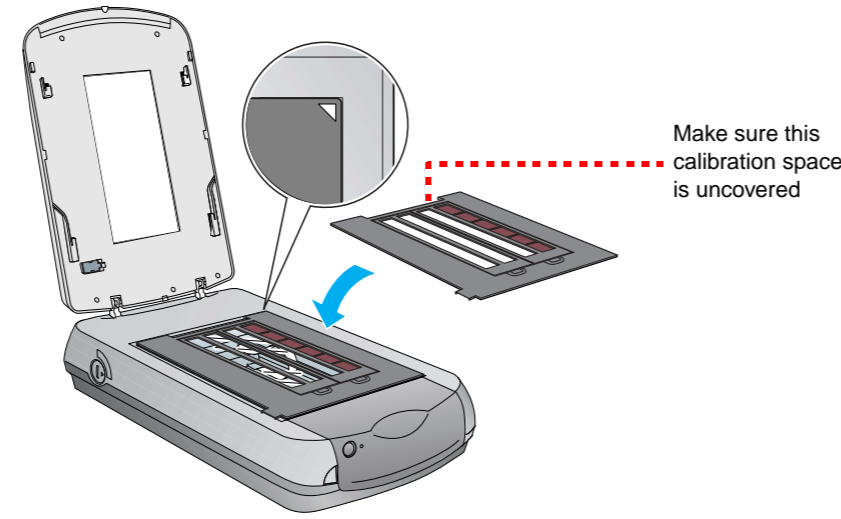


- 3 Follow the instructions for the type of film you are scanning: If you are scanning film or negatives, slide the film into the corresponding holder, with the film's shiny side facing down.

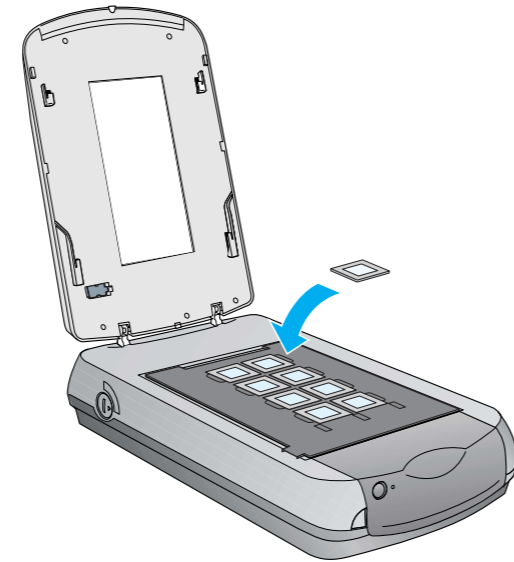


Slide the film into the holder as shown. Then lower the cover and press down on the tabs. Make sure all the tabs are locked in place.

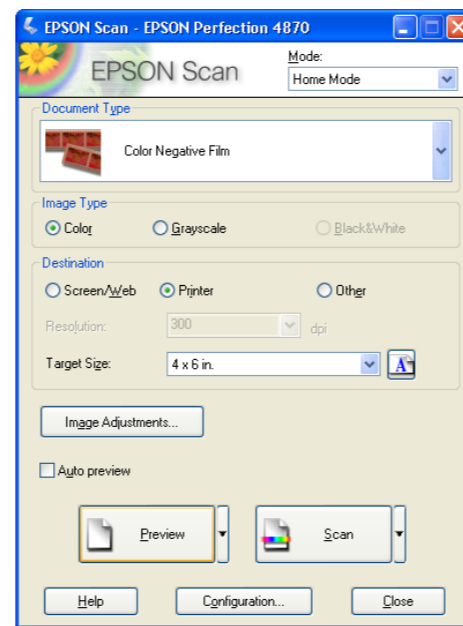
Place the film holder on the scanner as shown. Make sure the white triangle on the holder points to the upper-right corner of the scanner.



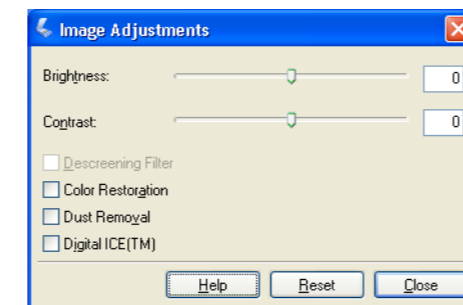
If you are scanning slides, place the holder on the scanner. Then place the slides in the holder.



- 4 Close the scanner cover.
- 5 Start EPSON Scan and make sure the correct Document Type is selected: either Color Negative Film, B&W Negative Film, or Positive Film (for slides and transparencies).
- 6 Click the **Preview** button at the bottom of the screen. Your photo appears in the Preview window.
- 7 Do one of the following:
 - If you're using Home Mode, click the **Image Adjustments** button.
 - If you're using Professional Mode, scroll to the bottom of the screen.



- You see the Image Adjustment settings.
- 8 Do one of the following:
 - If your film is dusty or scratched, select **Digital ICE**.
 - If you are scanning black and white negatives or Kodachrome film, select **Dust Removal** instead of **Digital ICE**.
 - If the colors are faded, select **Color Restoration**. This selection is grayed out if the preview window is not shown.



- 9 Select the thumbnail to be scanned in the Preview window.
- 10 Click the **Scan** button.

Note: When you are scanning film using Digital ICE, you may hear a click from the scanner. This is normal.

Problems?

First, check the indicator light on the scanner.

- Flashing green** Warming up or scanning.
- Green** Ready to scan.
- Flashing red** Make sure both transportation locks are unlocked. Try restarting your computer and turning the scanner off and then on again. If the red light is still flashing, contact your dealer or EPSON.
- Off** Make sure the scanner is connected to your computer and turned on.

If your problem is listed here, try these suggestions.

- The New Hardware Wizard appears on your screen.** Click **Cancel** and follow the steps in "Install the Software" on the other side of this sheet. Disconnect the scanner before installing the software.
- The scanner makes a grinding noise when it is turned on.** Make sure both transportation locks are unlocked.
- You see a message about a HI-SPEED USB device in Windows XP.** Click the **x** in the corner of the message to close it. Your scanner will work correctly, although not at maximum speed.
- You see an error message when you try to scan, or the scanner doesn't scan.** Make sure the scanner is connected to your computer, plugged into a power source, and the power switch is turned on. Make sure both transportation locks are unlocked. Uninstall the following programs: ABBYY FineReader, EPSON Photo Print, EPSON Scan, EPSON Smart Panel, and ScanToWeb. In the Windows Control Panel, use the Add/Remove Programs utility to uninstall software. Then follow the instructions on the other side of this sheet to reinstall your scanner software.

- You can't scan negatives or slides.** Make sure the film adapter (scanner cover) cable is connected to the scanner (see section 3) and the reflective document mat is removed. Try using the Home or Professional Mode. Make sure the Document Type or Film Type matches what you're scanning: either Color Negative Film, B&W Negative Film, or Positive Film (for slides and transparencies). Make sure both transportation locks are unlocked. Also, make sure the scanner glass is clean and the film holder is positioned correctly.

- The corner of your photo is not scanned.** Move your photo at least 1.5 mm away from the top and right edge of the document table.

Here's where to look for more answers:

- Double-click the *Perf4870 Reference Guide* icon on your desktop. (If you didn't install it, insert the scanner software CD-ROM in the CD-ROM or DVD drive. At the Custom Installation screen, select **Scanner Reference Guide**, then click **Install**. You must have Microsoft® Internet Explorer or Netscape® Navigator (versions 5.0 or later) to read the Reference Guide.
- **On-screen Help for Smart Panel and EPSON Scan:** Click the Help button or question mark that appears on the screen in these programs.

Safety Instructions

Read all of these instructions and save them for later reference. Follow all warnings and instructions marked on the scanner.

Place the scanner close enough to the computer for the interface cable to reach it easily. Do not place or store the scanner outdoors, near excessive dirt or dust, water, heat sources, or in locations subject to shocks, vibrations, high temperature or humidity, direct sunlight, strong light sources, or rapid changes in temperature or humidity. Do not use with wet hands.

Place the scanner near an electrical outlet where the power cord can be easily unplugged.

Power-supply cords should be placed to avoid abrasions, cuts, fraying, crimping, and kinking. Do not place objects on top of power-supply cords and do not allow power-supply cords to be stepped on or run over. Be particularly careful to keep all power-supply cords straight at the ends and the points where they enter and leave the transformer.

Use only the type of power source indicated on the scanner's label.

Avoid using outlets on the same circuit as photocopiers or air control systems that regularly switch on and off.

If you use an extension cord with the scanner, make sure the total ampere rating of the devices plugged into the extension cord does not exceed the cord's ampere rating. Also, make sure the total ampere rating of all devices plugged into the electrical outlet does not exceed the electrical outlet's ampere rating. Do not place multiple loads on the electrical outlet.

Never disassemble, modify, or attempt to repair the power cord, scanner, or options by yourself, except as specifically explained in the scanner's guides.

Do not insert objects into any openings as they may touch dangerous voltage points or short out parts. Beware of electrical shock hazards.

Allow space behind the scanner for the cables, and space above the scanner so that you can fully raise the scanner cover.

Unplug the scanner and refer servicing to qualified service personnel under the following conditions:

The power cord or plug is damaged; liquid has entered the scanner; the scanner has been dropped or the case damaged; the scanner does not operate normally or exhibits a distinct change in performance. (Do not adjust controls that are not covered by the operating instructions.)

If you plan to use the scanner in Germany, the building installation must be protected by a 10 or 16 amp circuit breaker to provide adequate short-circuit protection and over-current protection for this scanner.

For German-speaking users: Bei Anschluss des Scanners an die Stromversorgung muss sichergestellt werden, dass die Gebäudeinstallation mit einer 10 A- oder 16 A-Sicherung abgesichert ist.

For United Kingdom, Singapore and Hong Kong users: If damage occurs to the plug, replace the cord set or consult a qualified electrician. Replace fuses only with fuses of the correct size and rating.

For United Kingdom users:

Warning: This appliance must be earthed. Refer to the rating plate for the voltage and check that the appliance voltage corresponds to the supply voltage.

Important: The wires in the mains lead fitted to this appliance are coloured in accordance with the following code:

- Green and yellow - Earth
- Blue - Neutral
- Brown - Live

If you have to fit a plug:

As the colours of the mains lead of this appliance may not match the coloured markings used to identify the terminals in a plug, please observe the following:

The green and yellow wire must be connected to the terminal in the plug which is marked with the letter E or with the earth symbol (⏏).

The blue wire must be connected to the terminal in the plug marked with the letter N.

The brown wire must be connected to the terminal in the plug marked with the letter L.

All rights reserved. No part of this publication may be reproduced, stored in a retrieval system, or transmitted in any form or by any means, electronic, mechanical, photocopying, recording, or otherwise, without the prior written permission of Seiko Epson Corporation. The information contained herein is designed only for use with this EPSON scanner. EPSON is not responsible for any use of this information as applied to other scanners. Neither Seiko Epson Corporation nor its affiliates shall be liable to the purchaser of this product or third parties for damages, losses, costs, or expenses incurred by the purchaser or third parties as a result of: accident, misuse, or abuse of this product or unauthorized modifications, repairs, or alterations to this product, or (excluding the U.S.) failure to strictly comply with Seiko Epson Corporation's operating and maintenance instructions.

Seiko Epson Corporation shall not be liable for any damages or problems arising from the use of any options or any consumable products other than those designated as Original EPSON Products or EPSON Approved Products by Seiko Epson Corporation. Seiko Epson Corporation shall not be held liable for any damage resulting from electromagnetic interference that occurs from the use of any interface cables other than those designated as EPSON Approved Products by Seiko Epson Corporation. EPSON is a registered trademark of Seiko Epson Corporation. Microsoft and Windows are registered trademarks of Microsoft Corporation. Macintosh is a registered trademark of Apple Computer, Inc. Digital ICE is a trademark of the Eastman Kodak Company.

General Notice: Other product names used herein are for identification purposes only and may be trademarks of their respective owners. EPSON disclaims any and all rights in those marks.

