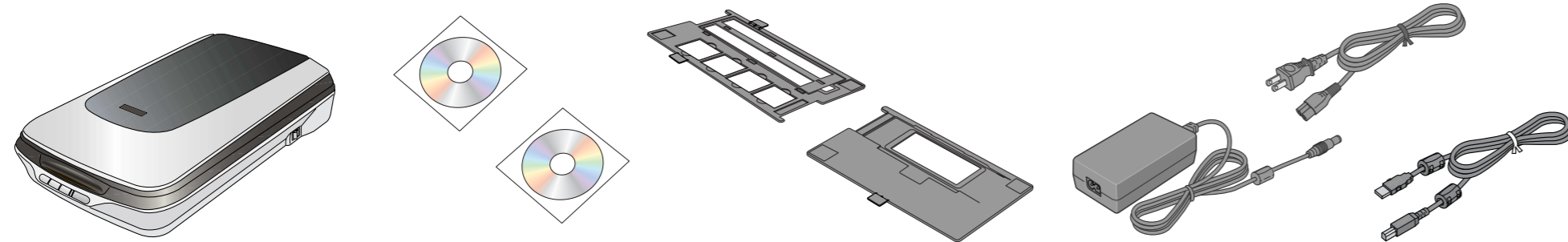


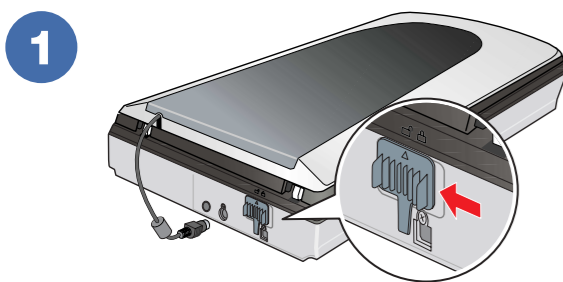
# Start Here

## EPSON PERFECTION™ 4490 PHOTO

### 1 Unpack



### 2 Unlock

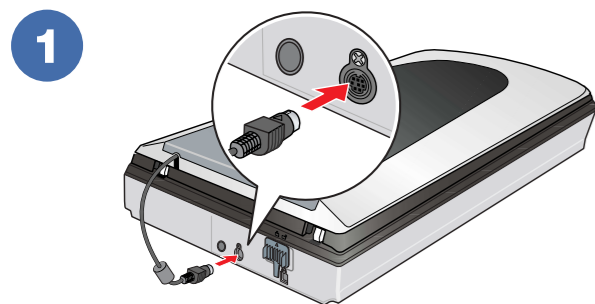


Unlock the scanner.



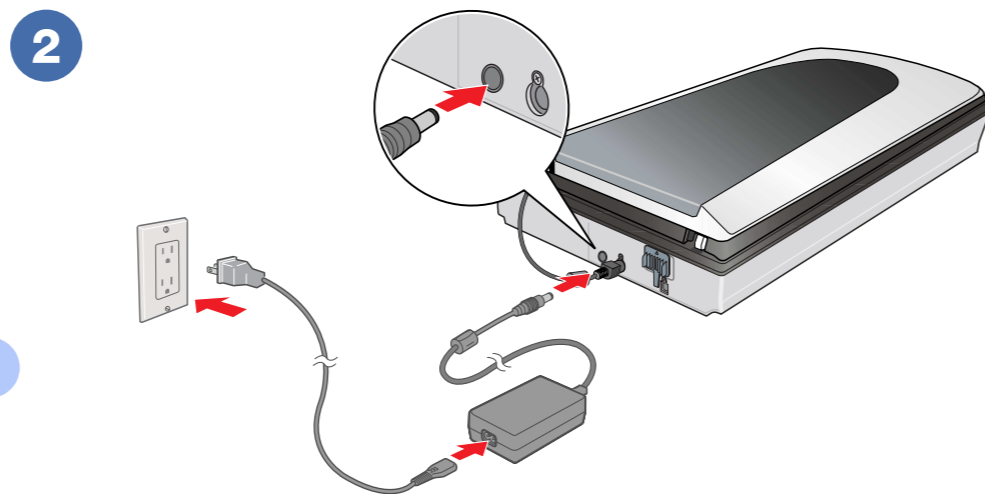
Unlock the transparency unit transportation lock.

### 3 Assemble



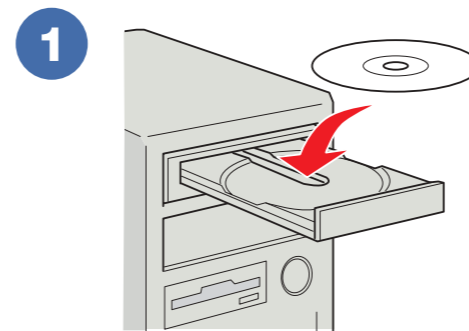
Connect the cover cable.

**Note:** Do not connect the USB cable yet.



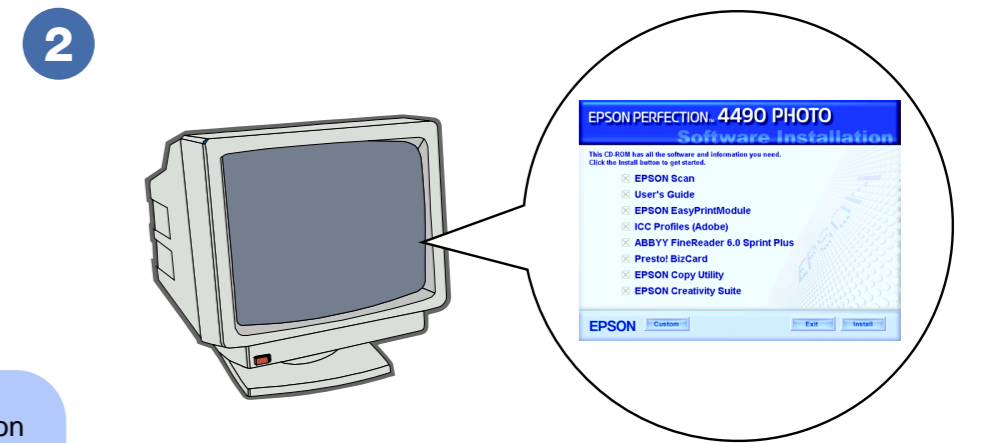
Connect the AC adapter and power cable.

### 4 Install software



Insert the scanner software CD.

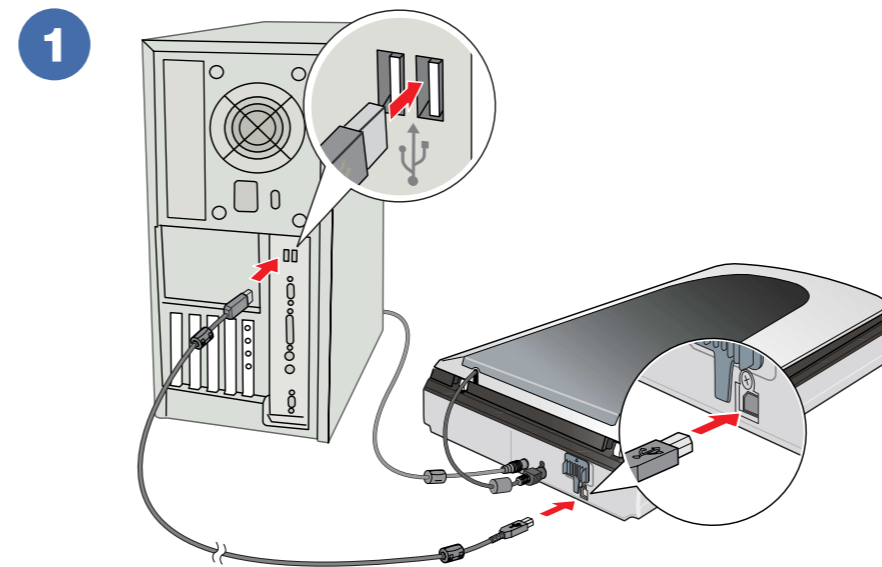
**Macintosh OS X:**  
Double-click the CD-ROM icon on the desktop.



Click **Install** and follow the on-screen instructions. At the end, remove the CD.

Insert the Adobe® Photoshop® Elements 3.0 CD and follow the on-screen instructions. (Supported by Windows® XP and 2000, or Macintosh® OS X 10.2.8 or later only.)

### 5 Connect and turn on

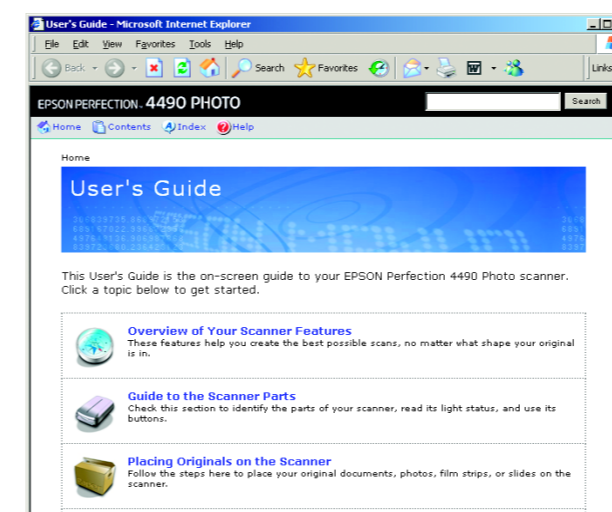


Connect the USB cable.




Turn on the scanner using the power switch.

### What's next?



See the back of this sheet for instructions on scanning a photo.

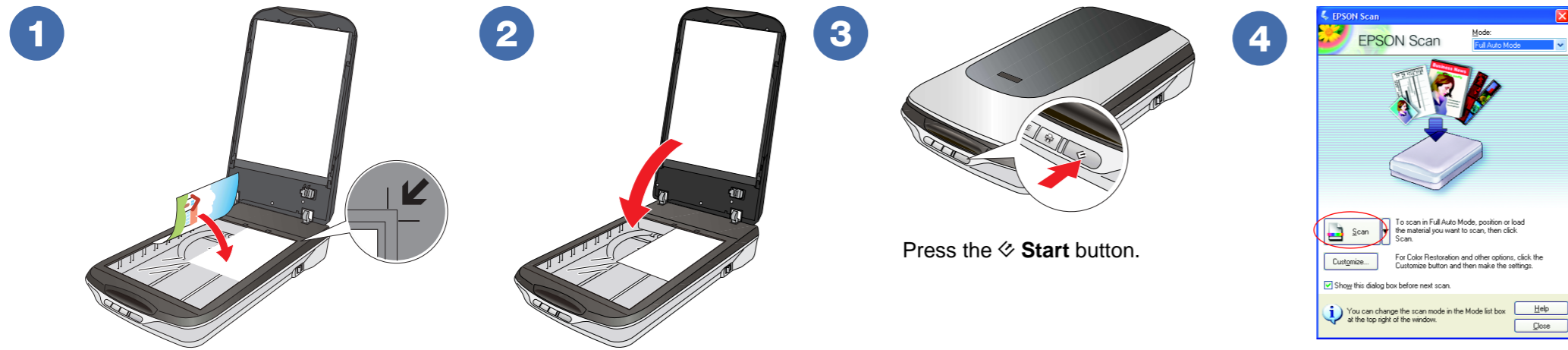
View the *User's Guide* for complete instructions on using your scanner. Double-click the  **PERF4490P** *User's Guide* icon on your desktop.



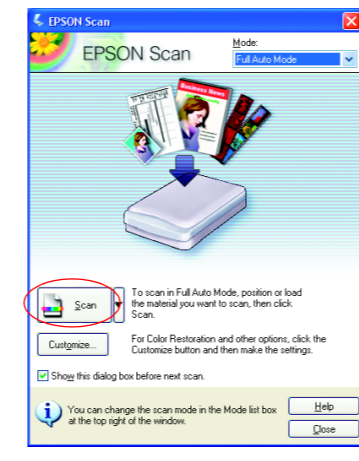
\*410048800\*

Printed in XXXXXX XX.XX-XX XXX

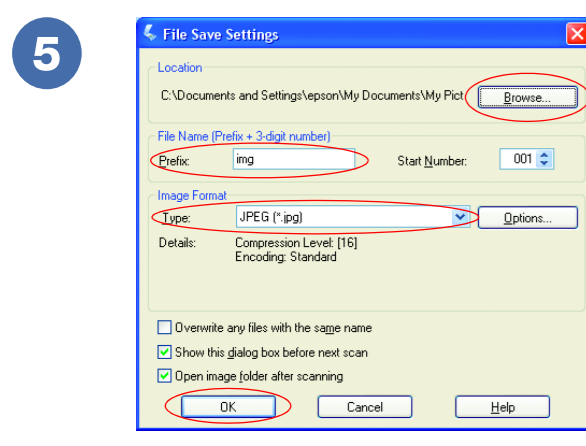
# 6 Scan a Photo



Press the **Start** button.



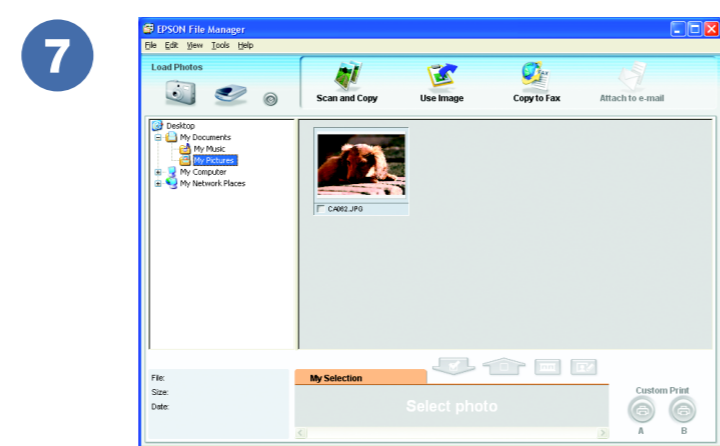
Click **Scan**.



Select your file settings, then click **OK**.

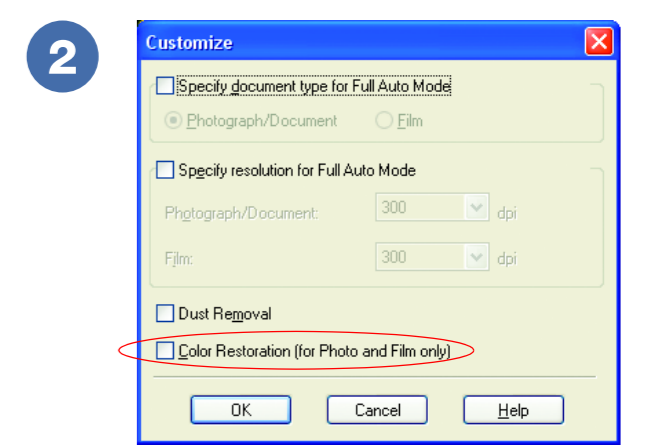
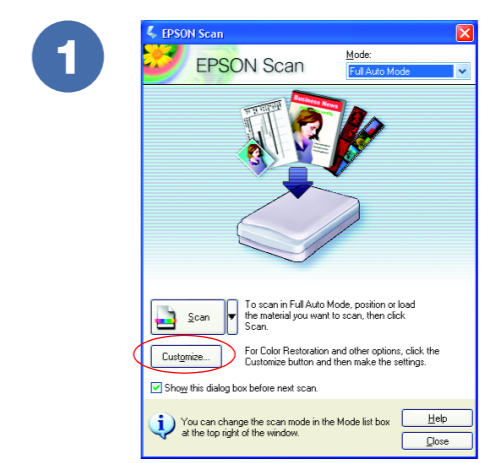


EPSON Scan opens and scans your photo in Full Auto Mode. Wait for your scan to finish or click **Pause** to change settings.

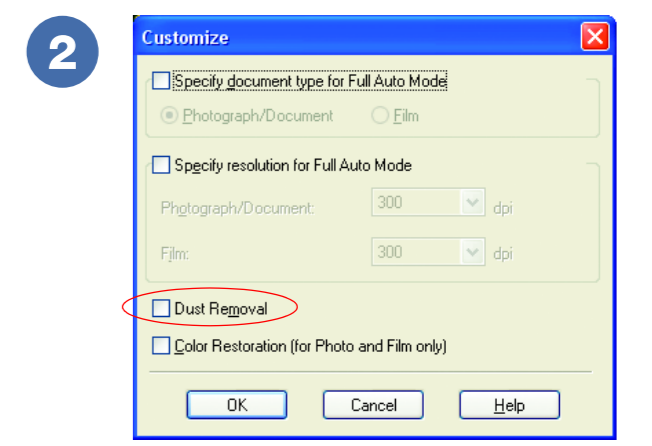
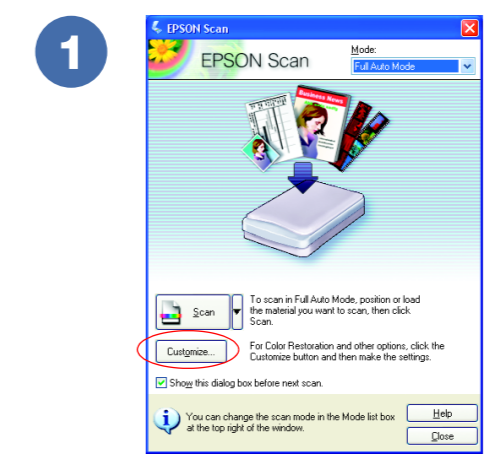
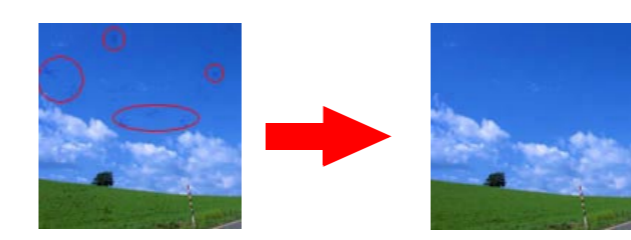


EPSON File Manager opens and displays your scanned photo. View the on-screen *User's Guide* for instructions on using EPSON File Manager.

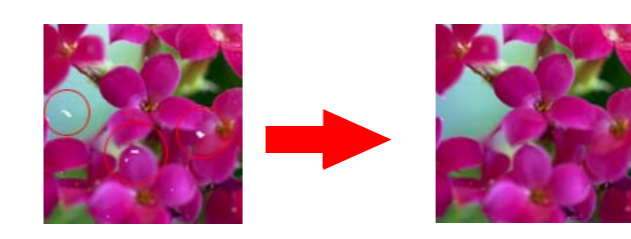
## Restore color



## Remove dust from film/slides



## Remove dust or scratch marks using Digital ICE™ or Digital ICE Lite™

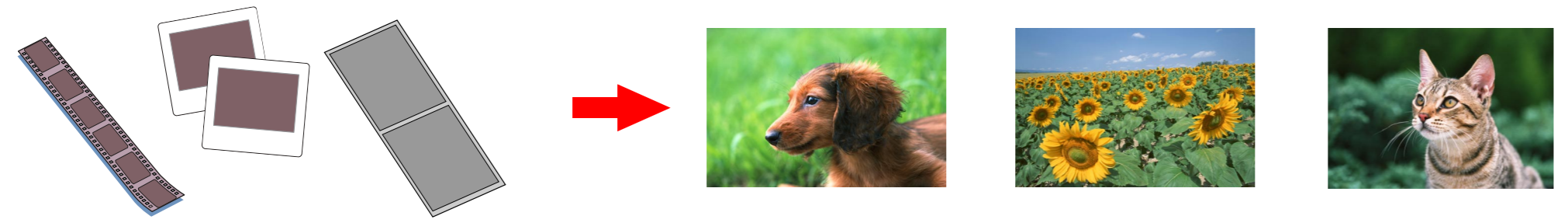


**Note:** Digital ICE is for color film/slides only. View the on-screen *User's Guide* for instructions.

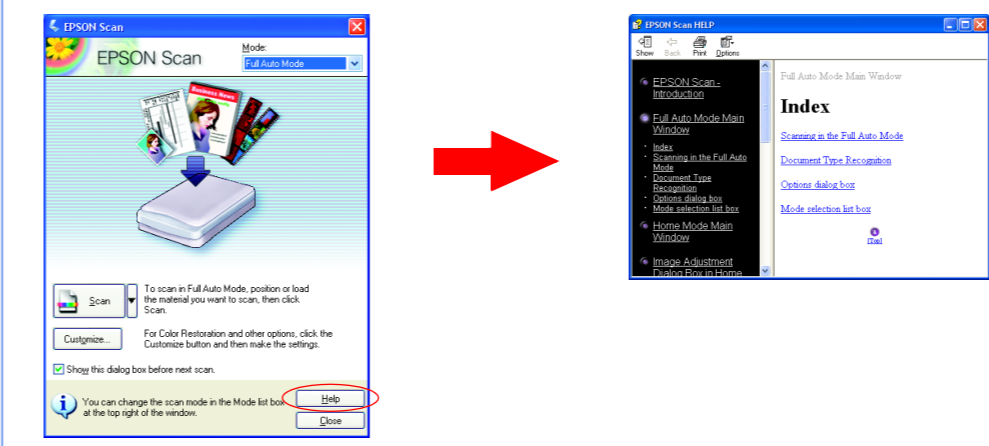
## Do more

View the on-screen *User's Guide* for instructions on using these features:

### Scan film or slides

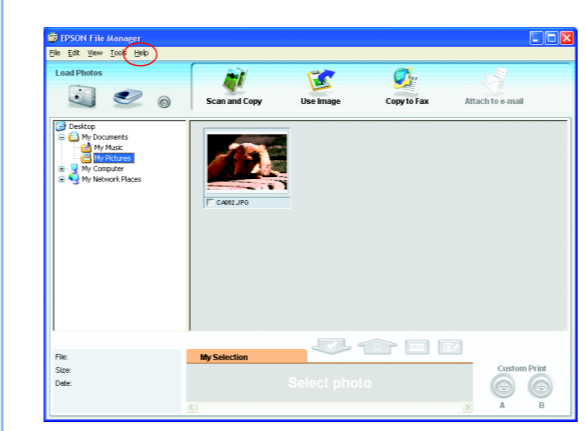


## Help

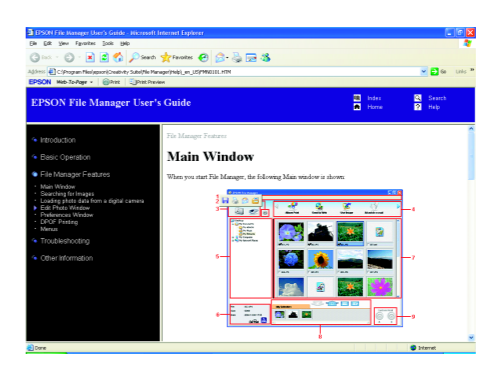


Click the **Help** button.

### EPSON Scan



### EPSON File Manager



Open the **Help** menu and select **EPSON File Manager User's Guide**.