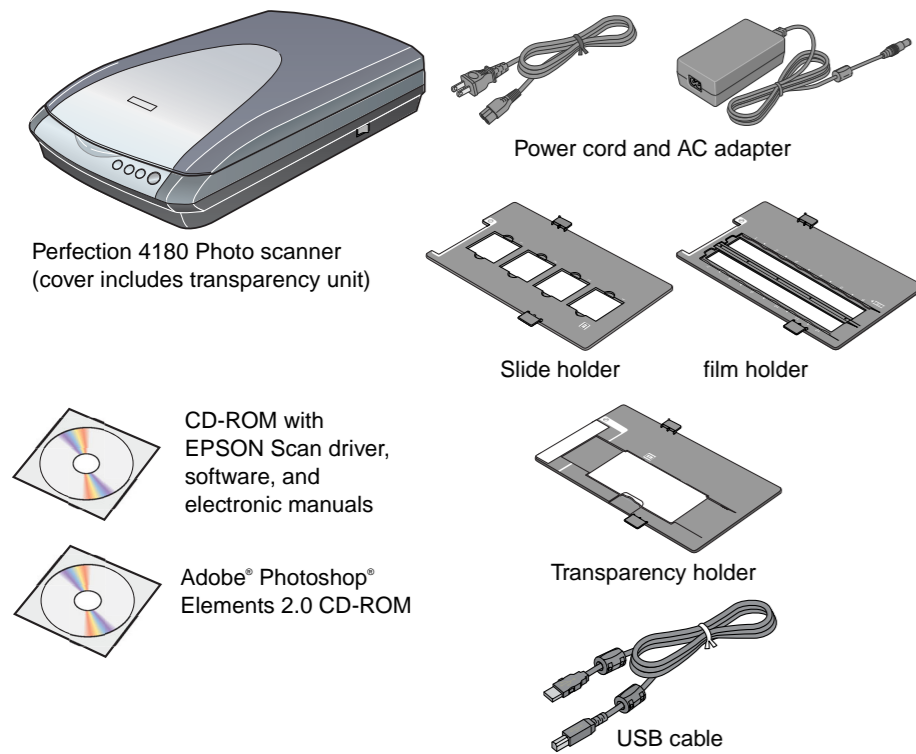


Start Here

EPSON PERFECTION™ 4180 PHOTO

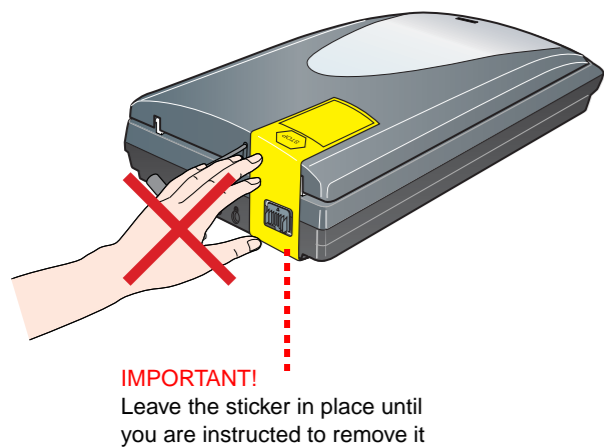
1 Unpack Your Scanner

- 1 Make sure you have all the accessories shown below for your EPSON® scanner:



Note: The contents may vary in certain locations.

- 2 Remove all the packing tape, but leave the large sticker in place until you are instructed to remove it.



2 Install the Software

Wait! You must install your software before connecting the scanner to your computer. The installation process may take several minutes. Be sure to close all open programs and turn off any virus protection programs.

If you do not already have Adobe Photoshop or Photoshop Elements on your computer, install Photoshop Elements from the CD-ROM included with your scanner.

Note:

- These instructions are for Windows® 98 SE or later, Macintosh® OS 9.1 or later, and OS X 10.2.x or later.
- EPSON Scan does not support the UNIX File System (UFS) for Mac OS X. You must install the software on a disk or in a partition that does not use UFS.
- Mac OS X 10.3 users: Do not use the Fast User Switching function while using the scanner.

- 1 Insert the scanner software CD-ROM in the CD-ROM or DVD drive. The installer starts automatically.

If it does not start, do the following:

- Windows XP: Click **Start**, double-click **My Computer**, and then double-click **EPSON**.
- Windows 98 SE, Me, and 2000: Double-click **My Computer**, and then double-click **EPSON**.
- Mac OS X: Double-click the EPSON CD-ROM icon.

- 2 **For Macintosh users:** (If you are using Windows, skip this step and go on to the next step.) Select the appropriate OS icon in the **EPSON** folder, and then double-click it.
- 3 If a message appears to prompt you to disable your virus protection program, click **Continue**.
- 4 Read the license agreement, and then click **Agree**.
- 5 If you are prompted to select a language, select your preferred language.
- 6 On the Software Installation screen, click **Install**. Enter your Administrator name and password if necessary.



Note: If you are installing the software on Mac OS 9, you may see a prompt to update your Carbon Library. After the CarbonLib installation is complete and you restart your system, double-click the appropriate OS icon in the **EPSON** folder, and then click **Install** to continue the installation.

- 7 Follow the on-screen instructions to install each program. Note that EPSON Smart Panel™ installs in several steps.

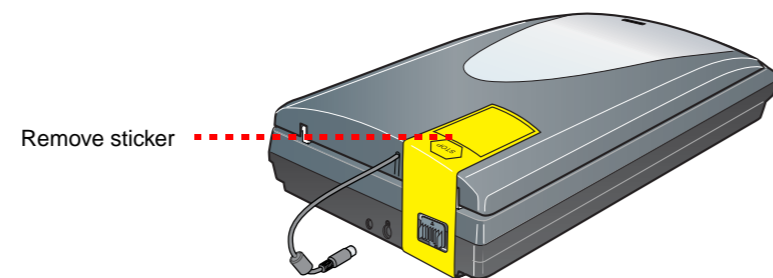
- 8 At the end of the installation, click **Exit** or **Restart Now**.

Go on to the next section, "Connect the Scanner."

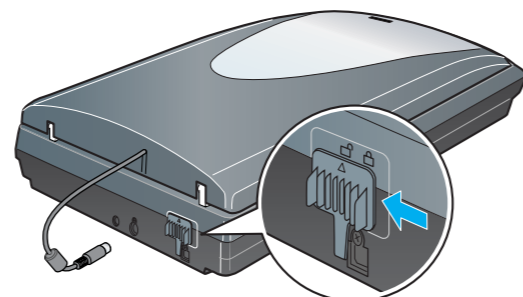
3 Connect the Scanner

After your software is installed, it is time to get connected.

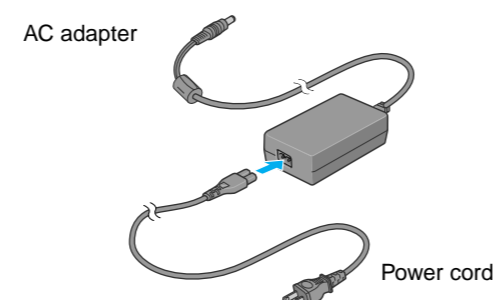
- 1 Remove the sticker from the back of the scanner.



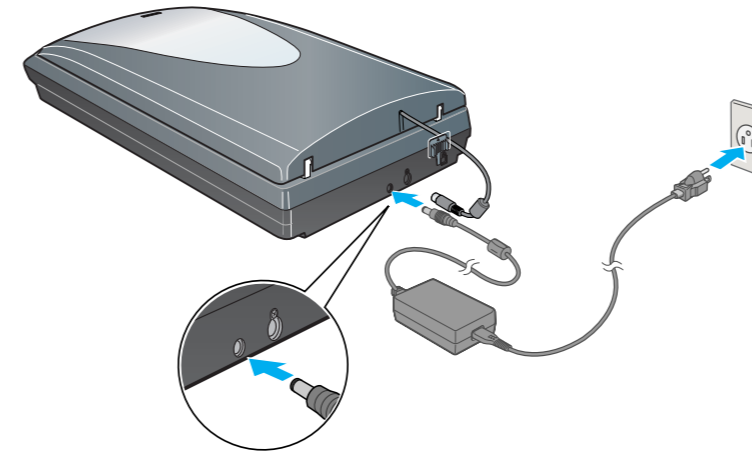
- 2 Locate the transportation lock on the back of the scanner and slide the lock to the left, as shown below.



- 3 Connect the power cord and the AC adapter.

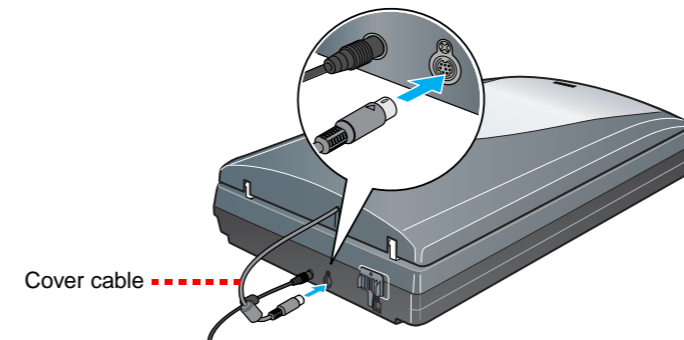


- 4 Connect the power cord to the scanner, and then plug the other end of the power cord into a grounded electrical outlet.

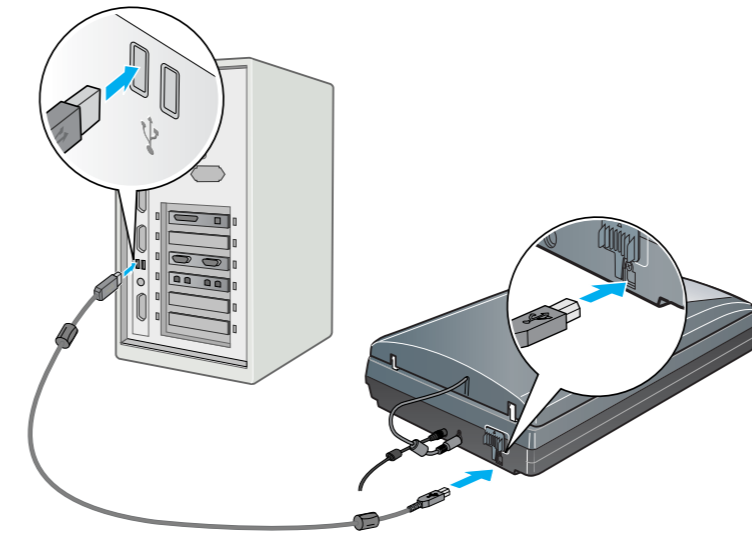


Caution: It is not possible to change the AC adapter's input or output voltage. If the label on the AC adapter does not show the correct voltage, contact your dealer. Do not plug in the power cord.

- 5 Connect the cover cable for the built-in transparency unit.



- 6 Use the USB cable that comes with your scanner. Plug the square end of the USB cable into the scanner's USB port. Then plug the flat end into any available USB port on your computer or hub.

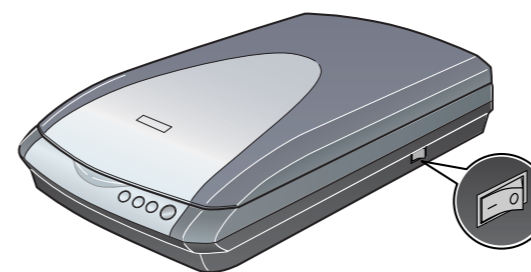


Note:

- The interface cable connectors have only one correct orientation. Ensure the correct orientation of a connector before inserting it into the appropriate port.
- Your scanner may not work correctly if you use a USB cable other than the one supplied by Epson or if you connect your scanner through more than one hub.

- 7 Turn on the power switch on the side of the scanner.

The scanner turns on and the Start button flashes green. It stops flashing and turns green when the scanner is ready.



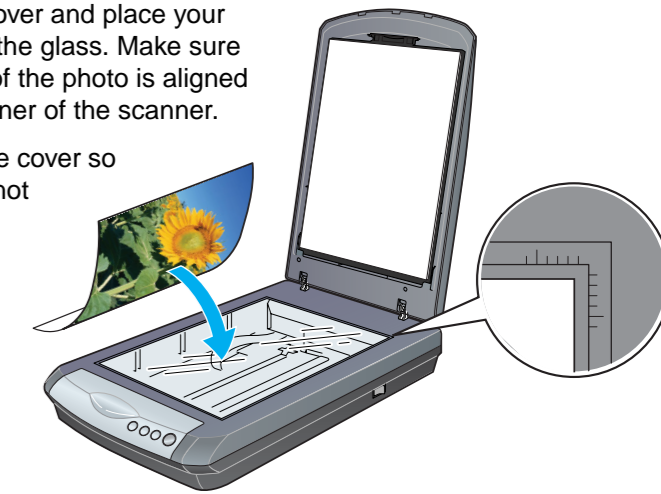
Scanner Basics

Your First Scan

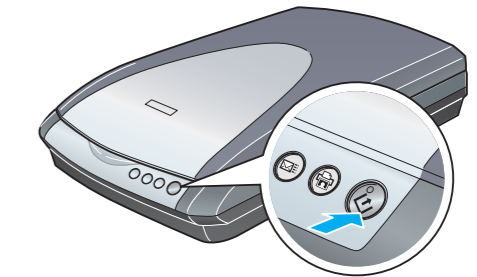
The Start button on your scanner automatically opens Smart Panel, making it easy for you to scan your images for many different uses. Here's how you can use the Start button and Smart Panel to scan photos and save them as files.

- 1 Raise the scanner cover and place your photo face down on the glass. Make sure the top right corner of the photo is aligned with the top right corner of the scanner.

Then gently close the cover so that your fingers do not get caught under it.

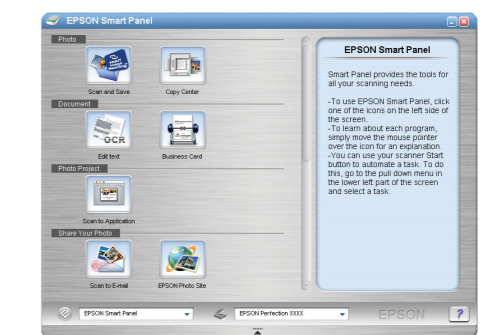


- 2 Press the Start button on your scanner.



Note: In Windows XP, you may see a message the first time you press the Start button. Select **EPSON SMART PANEL**, click **Always use this program for this action**, then click **OK**.

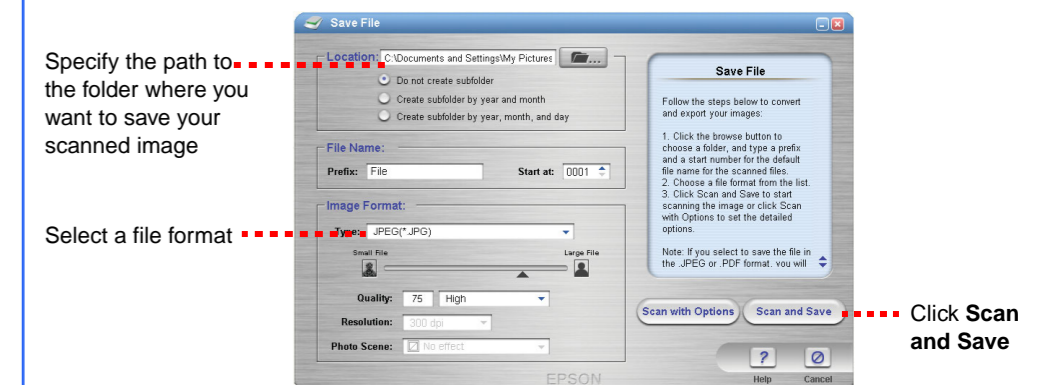
EPSON Smart Panel opens on your computer.



- 3 Click the Scan and Save icon. The following screen appears. Select a location and file type for your scanned image, and then click the **Scan and Save** button.

Note:

- To scan the image with option, click the **Scan with Options** button.
- In Home Mode or Professional Mode, you can scan a color faded photo or dirty photo using the **Image Adjustments** (or **Adjustments in Professional Mode**) settings. For details on changing mode and other functions, see the [Online Reference Guide](#).



- 4 EPSON Scan automatically starts. It then scans the document and saves the image to the specified folder.

Perfection 4180 Photo provides you with various useful functions to get the finest quality in scanning. See the [Online Reference Guide](#) for more information.

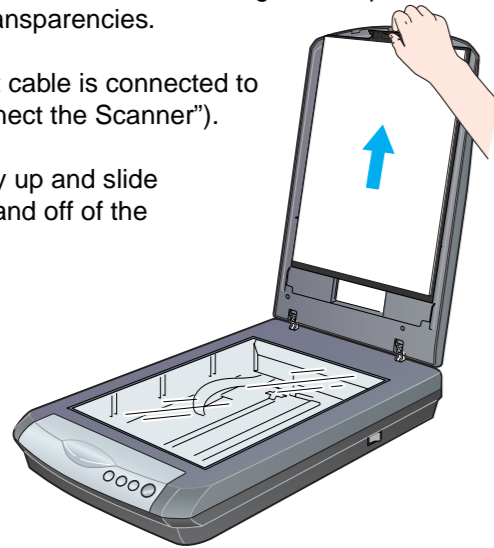
Turn over ----->

Scanning Film

The scanner cover has a built-in transparency unit. To scan negative strips, slides, or transparencies, you need to remove the document mat from the cover and insert the film in a holder.

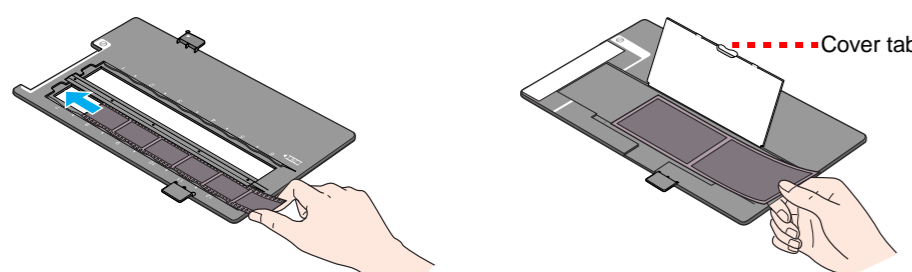
The scanner comes with 3 different film holders: one for negative strips, one for slides, and one for medium-format transparencies.

- 1 Make sure the transparency unit cable is connected to the scanner (see step 5 in "Connect the Scanner").
- 2 Lift the scanner cover all the way up and slide the reflective document mat up and off of the scanner cover.



- 3 Follow the instructions for the type of film you are scanning:

If you are scanning negative strips or medium-format transparencies, slide the film into the corresponding holder, with its face (the side you can see the image correctly) down.



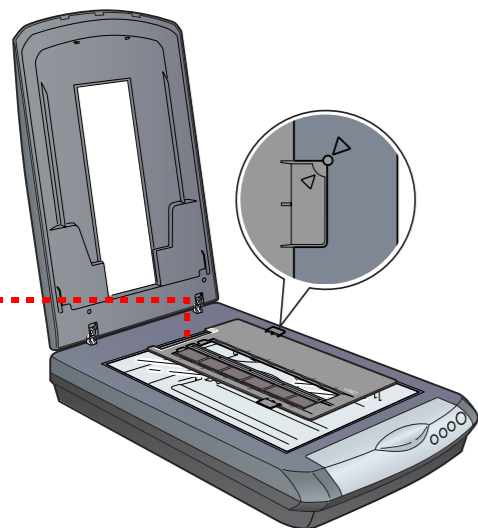
35-mm negative or film strips

Medium-format transparencies: Slide the film into the holder as shown. Then lower the cover and press the tab to lock it in place.

If you are scanning slides, place the holder on the scanner first, then place the slides in the holder, as shown at the bottom of the sheet.

Note: We recommend that you handle your film by taking its edge gently, or you may wear gloves when touching your film; otherwise you may damage it.

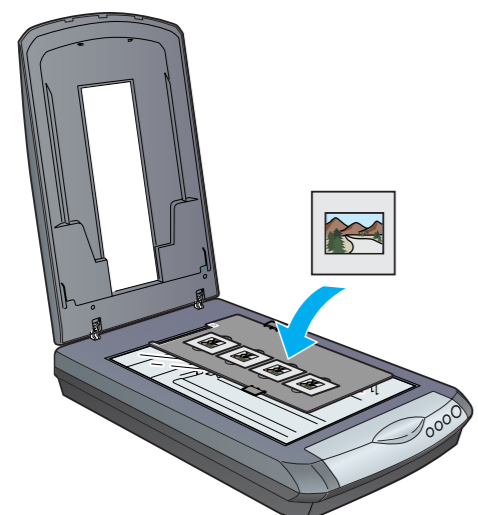
- 4 Place the film holder on the document table so that the triangle mark on its tab is aligned with that on the document table. The projection on the tab then go into the holes on the document table naturally.



Calibration space

Note: Make sure the narrow calibration space at the top of the film holder is uncovered to ensure an accurate scan.

If you are scanning slides, place the holder on the scanner. Then place the slides in the holder, with its face (the side you can see the image correctly) down.



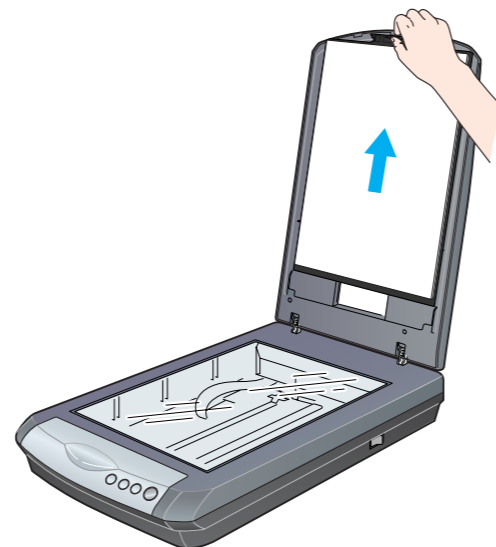
- 5 Close the scanner cover.

Storing the film holders

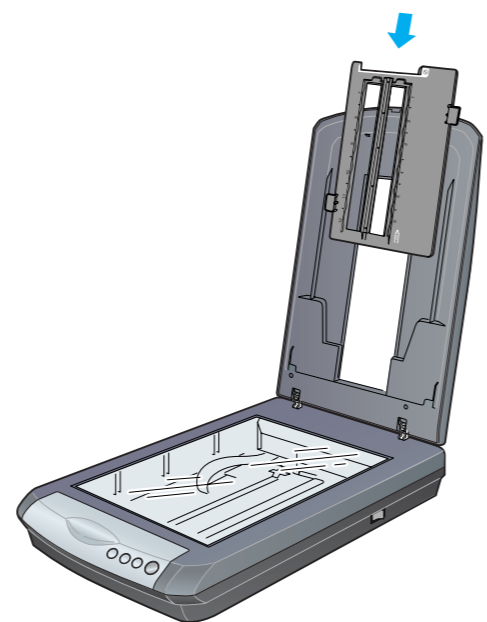
When not using the film holder, you can store it inside the document cover. After scanning, remove the film from the film holder and then follow the steps below.

Note: The document cover can store only two of the three film holders that come with this scanner. Therefore, store the film holders that you frequently use here and keep the other one elsewhere.

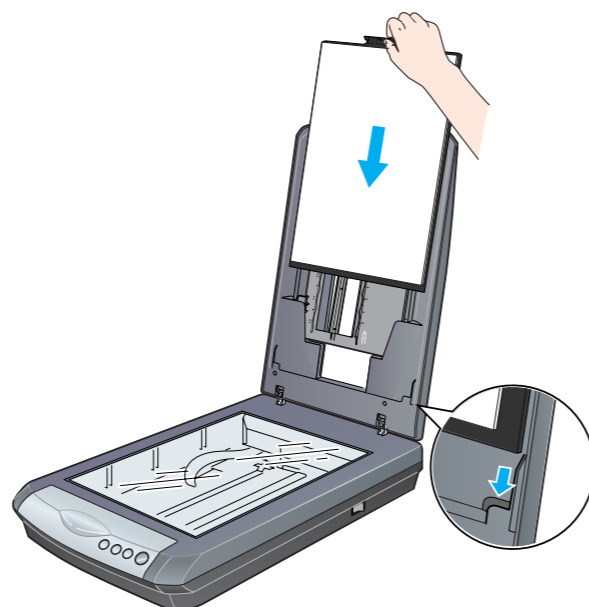
- 1 Open the document cover and remove the reflective document mat.



- 2 While referring to the illustration below, slide the film holder into the scanner cover.

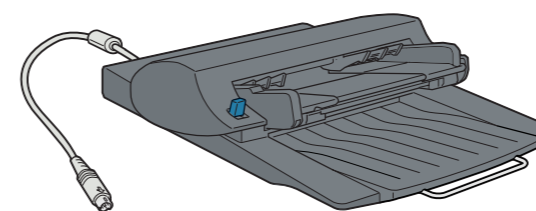


- 3 Replace the reflective document mat.



Scanning a Multi Page Document

The optional Automatic Document Feeder (B81334*) allows you to automatically load multi-page documents into your scanner. For more details, refer to the *Online Reference Guide*.

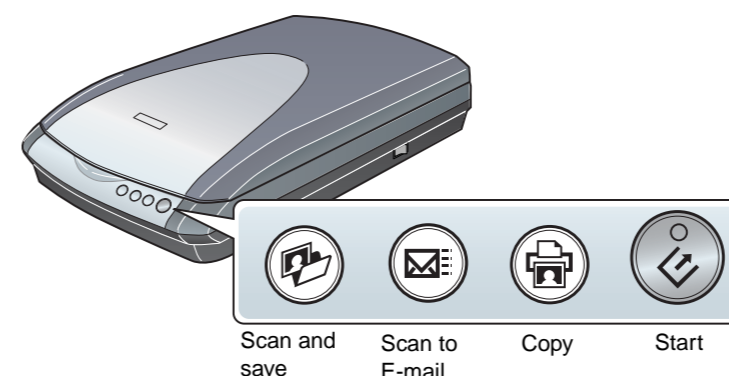


Using the Scanner Buttons

The scanner buttons make scanning easy. Just place your document face down on the scanner and press the button for the type of scan you want. Smart Panel automatically opens and scans your documents. Then follow the easy on-screen instructions to finish your task.

Note:

- If you are using Mac OS X, make sure Smart Panel is installed in a Mac OS X environment, not Classic mode. Otherwise, Classic mode may start when you press a scanner button.
- To learn more about the function of each button, see the *Online Reference Guide*.



Problems?

First, check the Start button light on the scanner.

	Flashing green	Warming up or scanning.
	Green	Ready to scan.
	Flashing red	Make sure the transportation lock is unlocked (see "Connect the Scanner"). Try restarting your computer and turning the scanner off and then on again. If the red light is still flashing, contact your dealer.
	Off	Make sure the scanner is connected to your computer and the power switch is turned on.

If your problem is listed here, try these suggestions.

The New Hardware Wizard appears on your screen.	Click Cancel and follow the steps in "Install the Software" on the other side of this sheet. Disconnect the scanner before installing the software.
The scanner makes a grinding noise when it is turned on.	Make sure the transportation lock is unlocked (see section 3).
You see an error message when you try to scan, or the scanner does not scan.	Make sure the scanner is connected to your computer and plugged into a power source. Uninstall and reinstall EPSON Scan.

Here is where to look for more answers:

- Double-click the **PERF4180P Reference Guide** icon on your desktop. (If you did not install it, insert the scanner software CD-ROM in the CD-ROM or DVD drive. At the Custom Installation screen, select **Scanner Reference Guide**, then click **Install**.)
- **On-screen Help for Smart Panel and EPSON Scan:** Click the **Help** button or question mark that appears on the screen when you are using these programs.

Safety Instructions

Read all these instructions and save them for later reference. Follow all warnings and instructions marked on the scanner.

Caution: Be sure the AC power cord meets the relevant local safety standards.

Place the scanner close enough to the computer for the interface cable to reach it easily. Do not place or store the scanner or the AC adapter outdoors, near excessive dirt or dust, water, heat sources, or in locations subject to shocks, vibrations, high temperature or humidity, direct sunlight, strong light sources, or rapid changes in temperature or humidity. Do not use with wet hands.

When connecting this product to a computer or other device with a cable, ensure the correct orientation of the connectors. Each connector has only one correct orientation. Inserting a connector in the wrong orientation may damage both devices connected by the cable.

Place the scanner and the AC adapter near an electrical outlet where the power cord can be easily unplugged.

Power supply cords should be placed to avoid abrasions, cuts, fraying, crimping, and kinking. Do not place objects on top of power-supply cords and do not allow the AC adapter or power-supply cords to be stepped on or run over. Be particularly careful to keep all power-supply cords straight at the ends and the points where they enter and leave the AC adapter.

Use only the AC adapter model A311B/E that comes with your scanner. Using any other adapter could cause fire, electrical shock, or injury.

The AC adapter is designed for use with the scanner with which it was included. Do not attempt to use it with other electronic devices unless specified.

Use only the type of power source indicated on the AC adapter's label, and always supply power directly from a standard domestic electrical outlet with the AC power cord that meets the relevant local safety standards.

Avoid using outlets on the same circuit as photocopiers or air control systems that regularly switch on and off.

If you use an extension cord with the scanner, make sure the total ampere rating of the devices plugged into the extension cord does not exceed the cord's ampere rating. Also, make sure the total ampere rating of all devices plugged into the electrical outlet does not exceed the electrical outlet's ampere rating. Do not place multiple loads on the electrical outlet.

Never disassemble, modify, or attempt to repair the AC adapter, power cord, scanner, and option by yourself except as specifically explained in the scanner's guides.

Do not insert objects into any opening as they may touch dangerous voltage points or short out parts. Beware of electrical shock hazards.

Unplug the scanner and the AC adapter, and refer servicing to qualified service personnel under the following conditions:

The power cord or plug is damaged; liquid has entered the scanner or the AC adapter; the scanner or the AC adapter has been dropped or the case damaged; the scanner or the AC adapter does not operate normally or exhibits a distinct change in performance. (Do not adjust controls that are not covered by the operating instructions.)

Unplug the scanner and the AC adapter before cleaning. Clean with a damp cloth only. Do not use liquid or aerosol cleaners.

If you are not going to use the scanner for a long period, be sure to unplug the AC adapter from the electrical outlet.

If your AC adapter is equipped with a polarized alternating-current line plug (a plug having one blade wider than the other) and a polarized power inlet, you must insert the plug into a power outlet in a specific way. This is a safety feature. If you are unable to insert the plug properly, try reversing the plug. If this fails again, contact an electrician to replace your outlet. Be sure to use only the polarized power cord that comes with the scanner.

Safety Requirements for Singapore users:

Mains plug: Use a 3-pin plug that is registered with the Safety Authority.
Flexible cord: Use a double insulated flexible cord that is certified* to the relevant IEC standards.
Appliance connector: Use an appliance connector certified* to IEC 320.

* certified by member of IEC EE CB Scheme.

Singapore and Hong Kong users: Replace fuses only with fuses of the correct size and rating.

Warning: Refer to the rating plate for the voltage and check that the appliance voltage corresponds to the supply voltage.

Important: The wires in the mains lead fitted to this appliance are coloured in accordance with following code: Blue - Neutral, Brown - Live

If you have to fit a plug:

As the colours of the mains lead of the appliance may not match the coloured markings used to identify the terminals in a plug, please observe the following:

The blue wire must be connected to the terminal in the plug marked with the letter N.

The brown wire must be connected to the terminal in the plug marked with the letter L.

If damage occurs to the plug, replace the cord set or consult a qualified electrician.

All rights reserved. No part of this publication may be reproduced, stored in a retrieval system, or transmitted in any form or by any means, electronic, mechanical, photocopying, recording, or otherwise, without the prior written permission of Seiko Epson Corporation. The information contained herein is designed only for use with this Epson scanner. Epson is not responsible for any use of this information as applied to other scanners. Neither Seiko Epson Corporation nor its affiliates shall be liable to the purchaser of this product or third parties for damages, losses, costs, or expenses incurred by the purchaser or third parties as a result of: accident, misuse, or abuse of this product or unauthorized modifications, repairs, or alterations to this product, or (excluding the U.S.) failure to strictly comply with Seiko Epson Corporation's operating and maintenance instructions.

Seiko Epson Corporation shall not be liable for any damages or problems arising from the use of any options or any consumable products other than those designated as Original Epson Products or Epson Approved Products by Seiko Epson Corporation. Seiko Epson Corporation shall not be held liable for any damage resulting from electromagnetic interference that occurs from the use of any interface cables other than those designated as Epson Approved Products by Seiko Epson Corporation. EPSON is a registered trademark of Seiko Epson Corporation. Microsoft and Windows are registered trademarks of Microsoft Corporation. Macintosh is a registered trademark of Apple Computer, Inc.

General Notice: Other product names used herein are for identification purposes only and may be trademarks of their respective owners. Epson disclaims any and all rights in those marks.

Copyright © 2004 by Seiko Epson Corporation Printed on recycled paper.