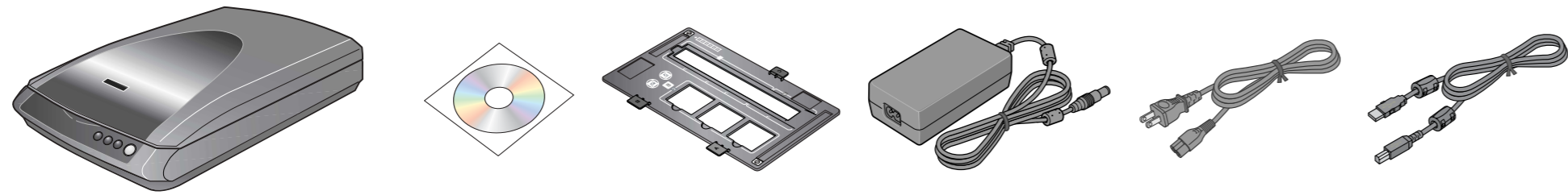


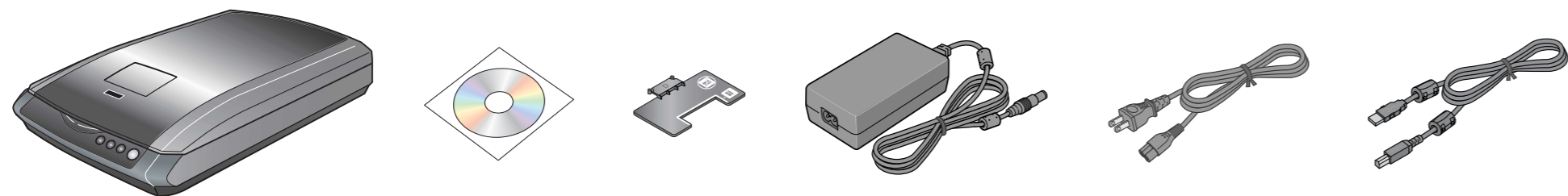
# Start Here

EPSON PERFECTION™ 3490 PHOTO EPSON PERFECTION™ 3590 PHOTO

## 1 Unpack

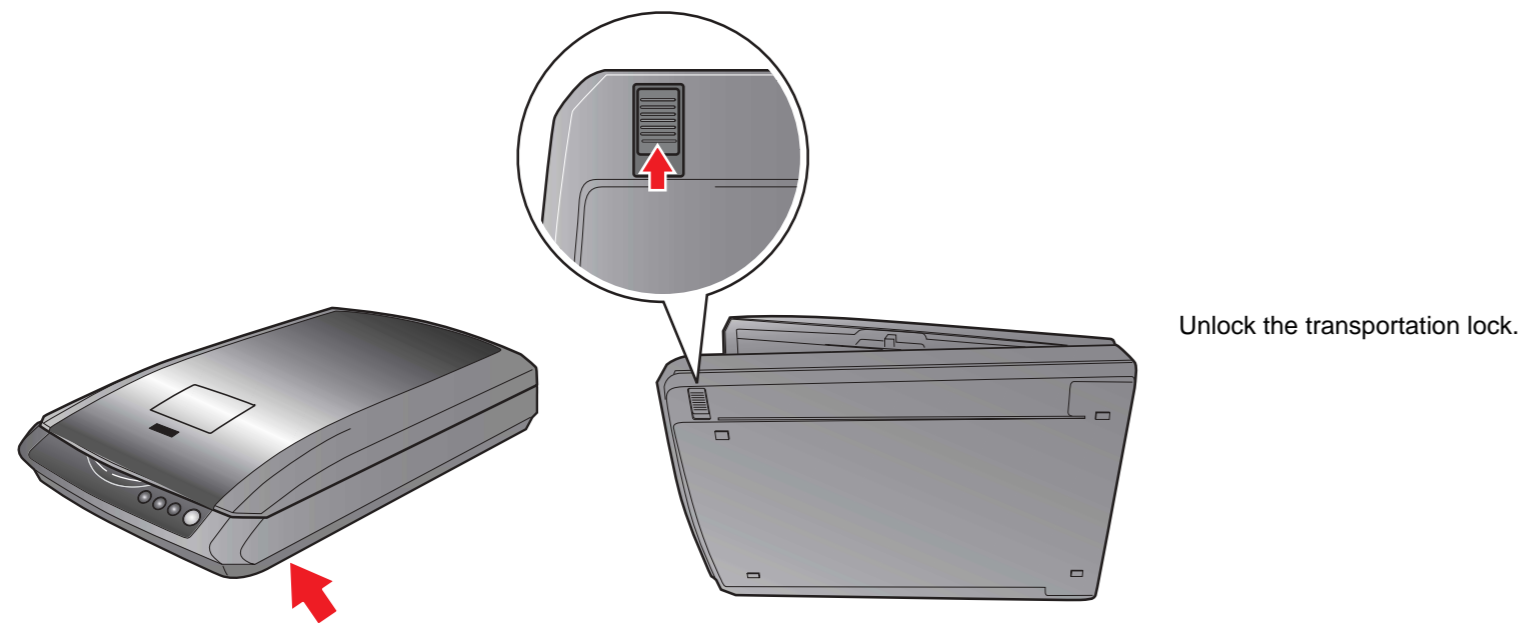


Perfection 3490 Photo



Perfection 3590 Photo

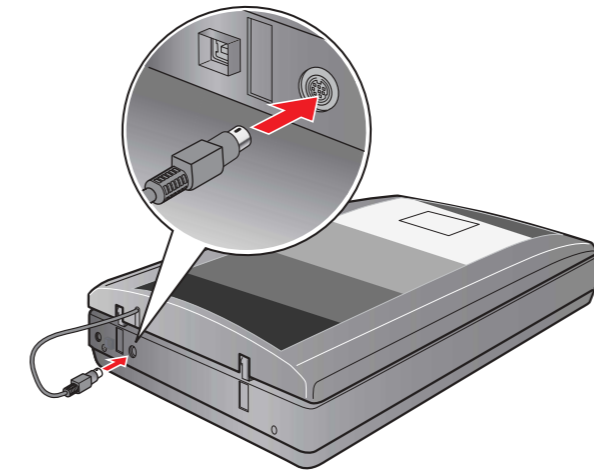
## 2 Unlock



Unlock the transportation lock.

**Note:** The setup illustrations show the Perfection 3590 Photo scanner, but the instructions are the same for the Perfection 3490 Photo.

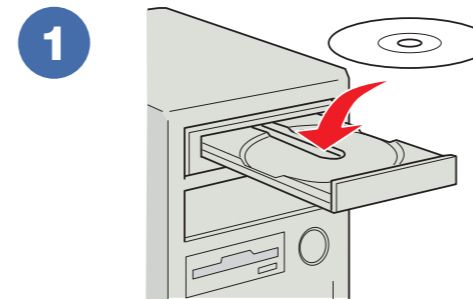
## 3 Assemble



Connect the cover cable.

**Note:** Do not connect the USB cable yet.

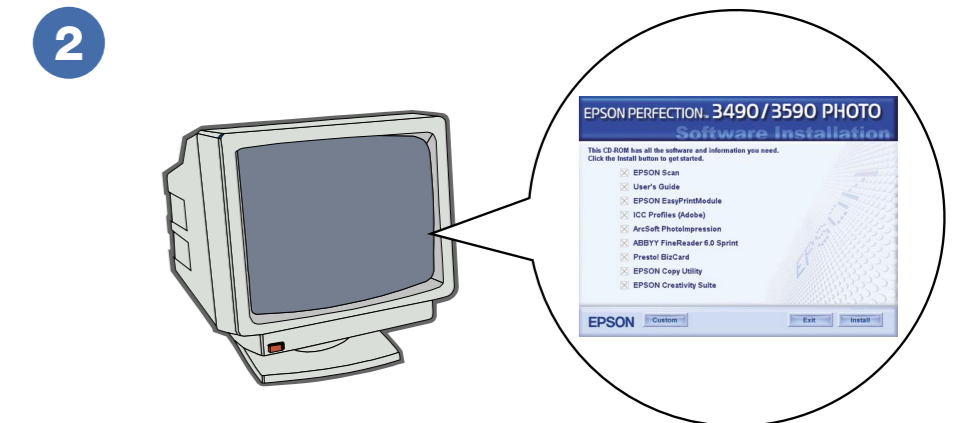
## 4 Install software



1

Insert the Scanner Software CD.

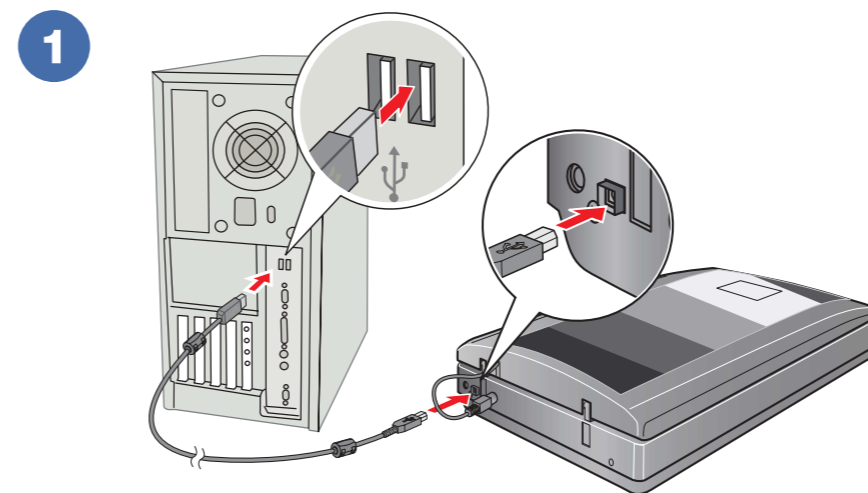
**Macintosh OS X:**  
Double-click the CD-ROM icon on the desktop.



2

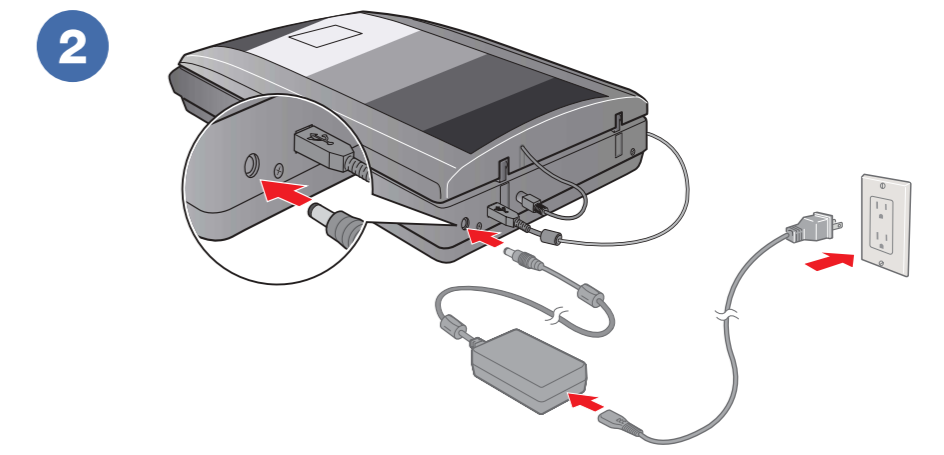
Click **Install** and follow the on-screen instructions.

## 5 Connect and turn on



1

Connect the USB cable.



2

Connect the power adapter and cable to turn on the scanner.

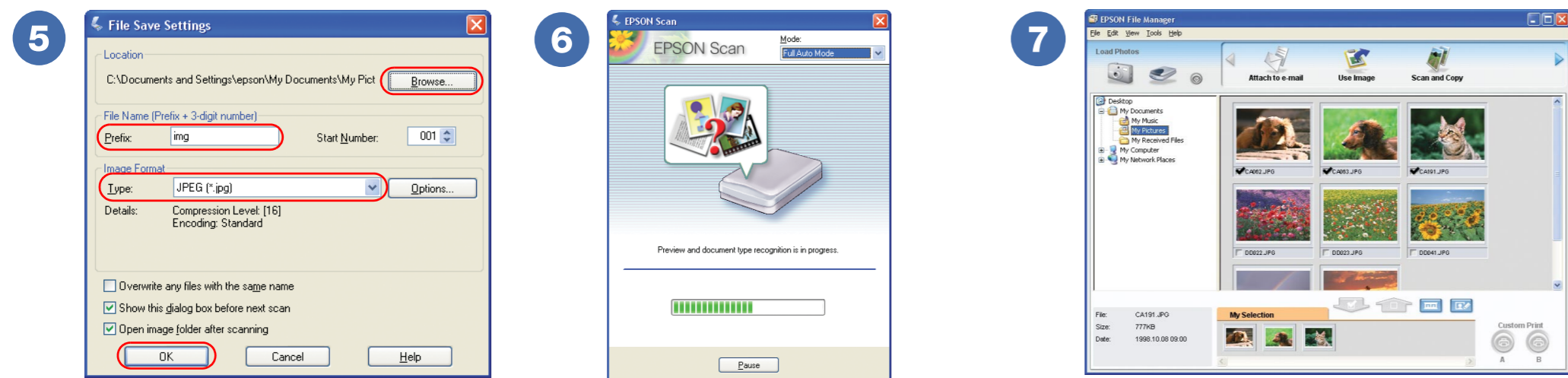
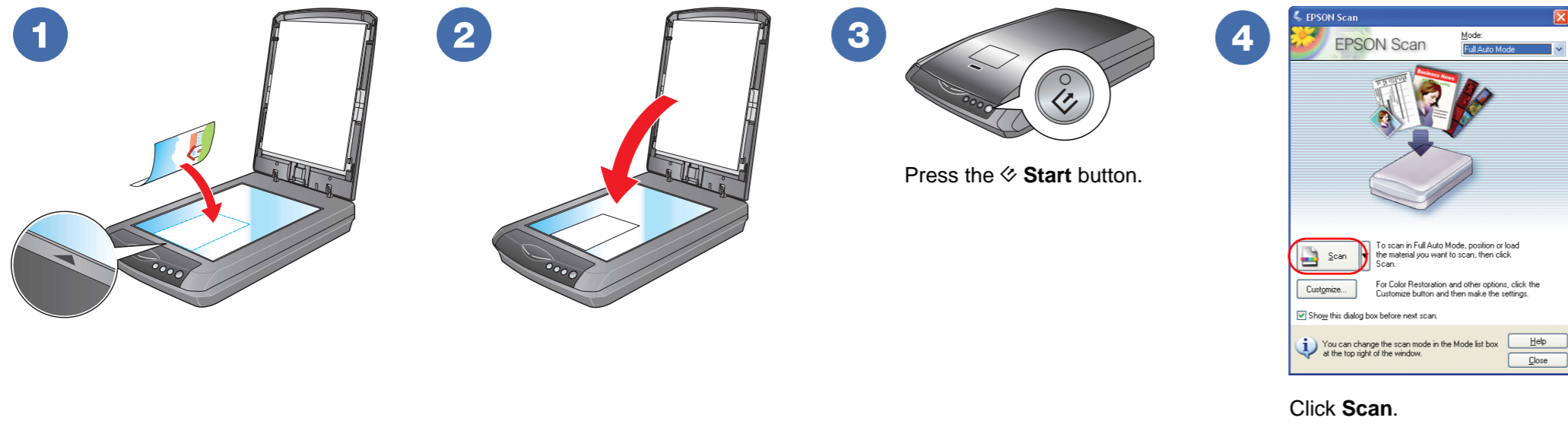


\*410081200\*

Printed in XXXXXX XX.XX-XX XXX



# 6 Scan a Photo



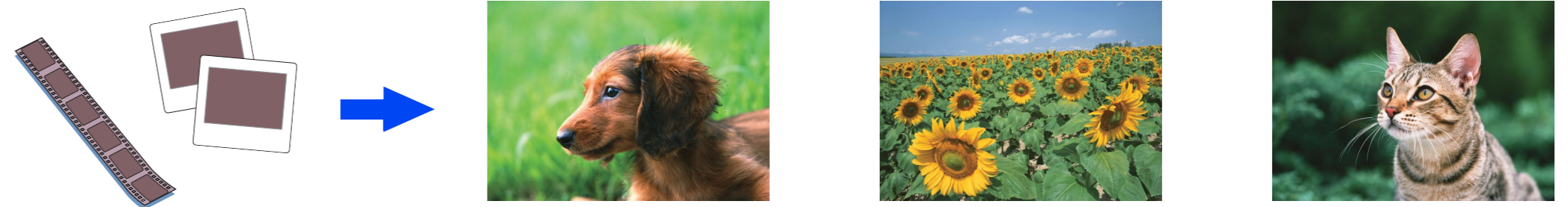
Select your file settings, then click **OK**.

EPSON Scan opens and scans your photo in Full Auto Mode. Wait for your scan to finish or click **Pause** to change settings.

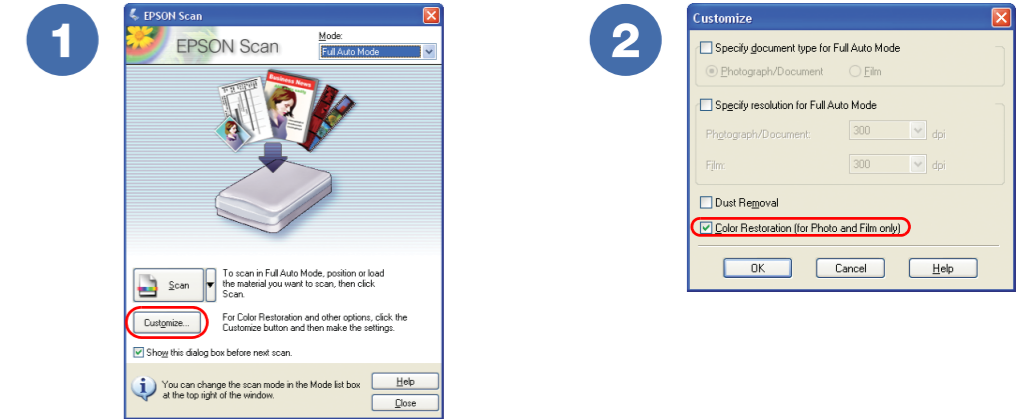
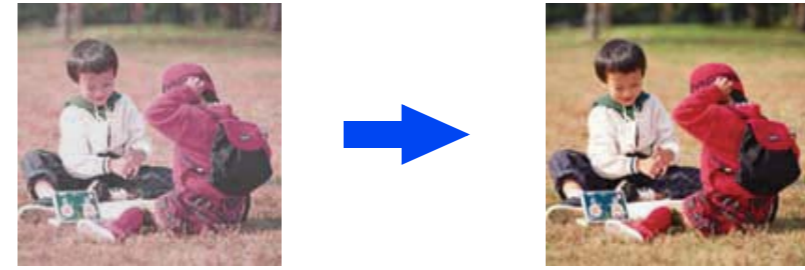
EPSON File Manager opens and displays your scanned photo. View the on-screen *User's Guide* for instructions on using EPSON File Manager.

## Do more

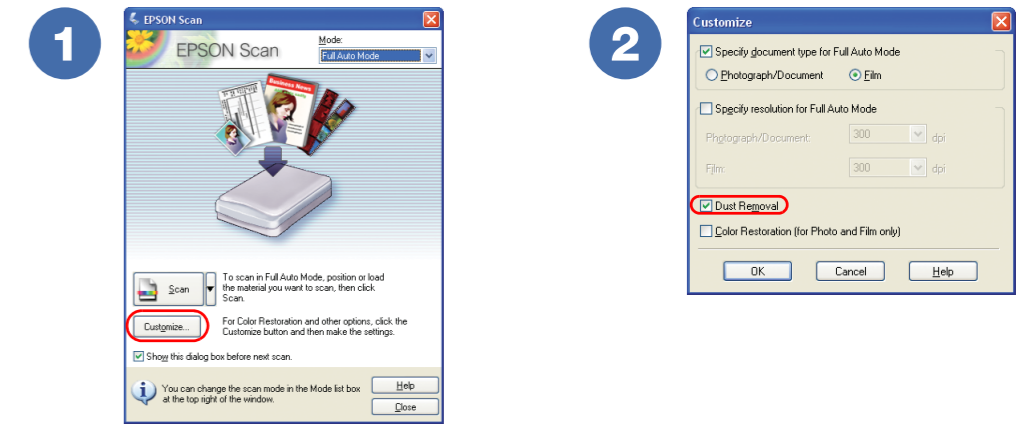
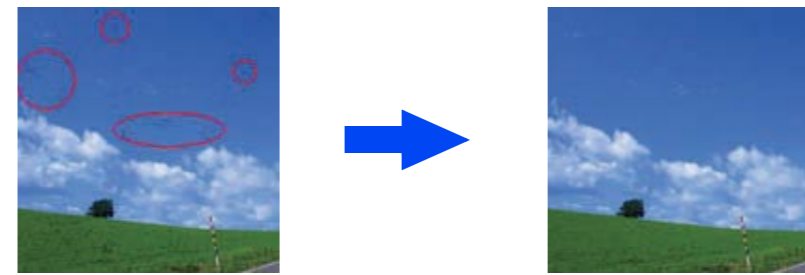
### Scan film or slides



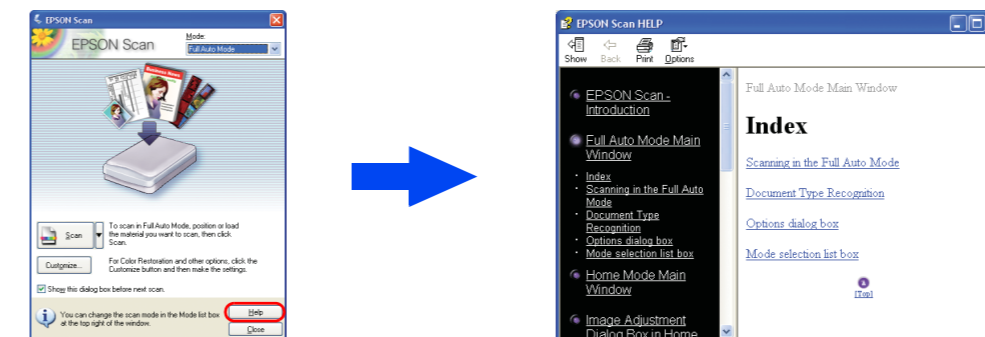
### Restore color



### Remove dust from film/slides

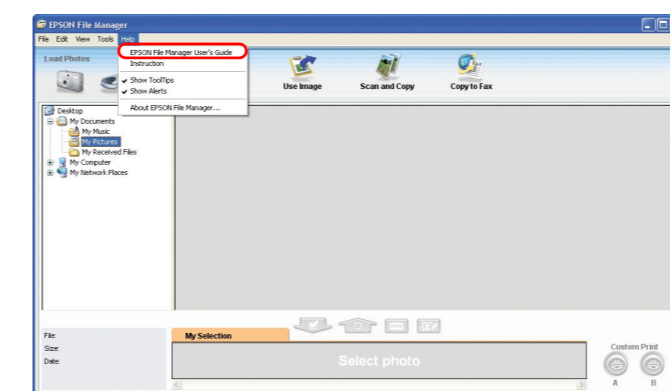


## Help

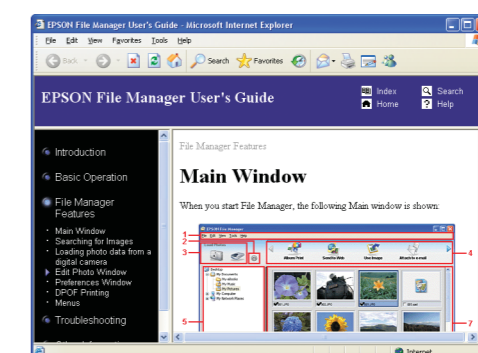


Click the **Help** button.

EPSON Scan



EPSON File Manager



Open the **Help** menu and select **EPSON File Manager User's Guide**.

## What's next?



View the *User's Guide* for complete instructions on using your scanner. Double-click the **Perf3490P\_3590P User's Guide** icon on your desktop.