

# Setup

English

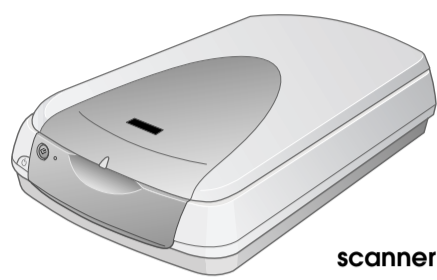
4033475-00  
xxx

Warnings, Cautions, and Notes

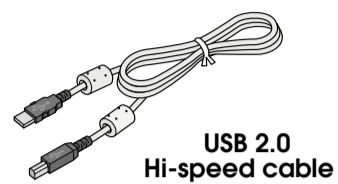
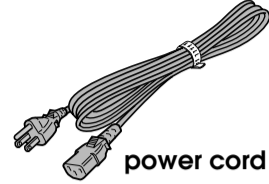
**Warnings** must be followed carefully to avoid bodily injury.**Cautions** must be observed to avoid damage to your equipment.**Notes** contain important information and useful tips on the operation of your scanner.

## 1 Unpacking

1. Make sure the following items are included and not damaged.



scanner

USB 2.0  
Hi-speed cable

power cord

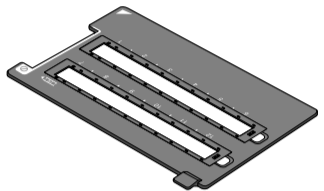


CD-ROM

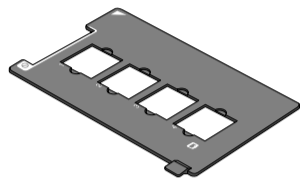
**Note:**  
Power cord may come attached in some countries.

film holders

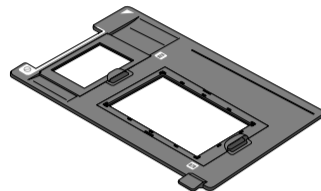
The contents may vary in certain locations.



35mm film strip

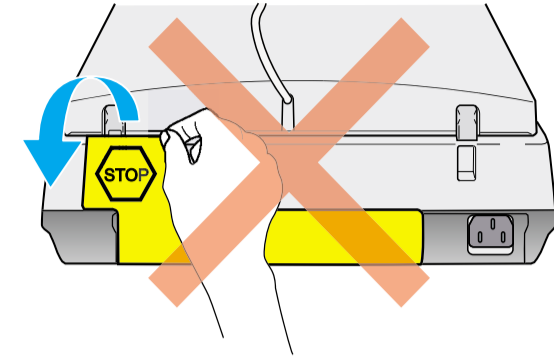


35mm slide

120/220 (6 × 9 cm) film/  
4 × 5 inches film

2. Remove the packing tape from your scanner.

**Important!**  
Leave the yellow sticker in place until you are instructed to remove it.



## 2 Installing the Software

The software CD contains the scanner software and electronic manuals.

**You must install the software BEFORE connecting the scanner to your computer.**

### For users of Windows and Mac OS 8.6 to 9.x

1. Insert the software CD into the CD-ROM drive.

#### For Windows users:

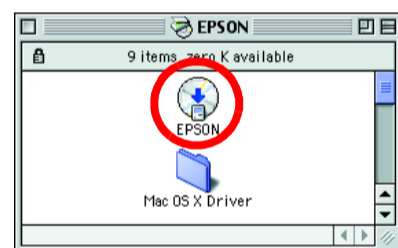
The EPSON Installer Program dialog box appears. Select your preferred language and then click **Next**.

#### Note:

If the EPSON Installation Program dialog box does not appear, click the CD-ROM icon, and then select **Open** from the File menu. Double-click **SETUP.EXE**.

#### For Macintosh users:

Double-click the **EPSON** icon inside the EPSON folder.



2. Select **Install Software** and then click **Next**.
3. Follow the on-screen instructions until all of the software is installed. When a message appears informing you that installation is complete, click **OK**.
4. Restart your computer if a message appears instructing you to do so.



### For Mac OS X users

1. Insert the software CD into the CD-ROM drive.
2. Double-click the **Mac OS X driver** folder, and then double-click your preferred language folder.
3. Double-click the **EPSON Scan Installer** icon. If the Authorization window opens, click the key icon, enter the administrator's name and password, click **OK**.
4. Follow the on-screen instructions until all of the software is installed. When a message appears informing you that installation is complete, click **OK**.
5. Restart your computer if a message appears instructing you to do so.

### Installing Application Software

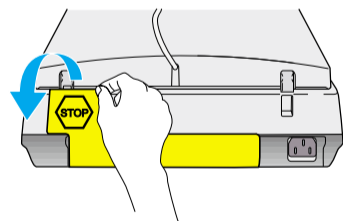
To install Adobe® Photoshop® Elements, insert the Photoshop CD into the CD-ROM drive, and then follow the on-screen instructions.

#### Macintosh users:

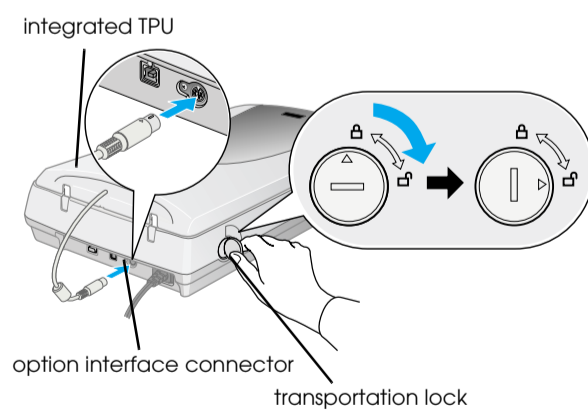
After inserting the CD-ROM, double-click the **Adobe® Photoshop® Elements** icon that appears on the desktop. Next, double-click the folder of your preferred language, and then double-click the **Adobe® Photoshop® Elements** folder. To begin installation, double-click the installer icon and then follow the on-screen instructions.

## 3 Setting Up the Scanner

1. Remove the yellow sticker from the back of the scanner.



2. Connect the integrated TPU connector to the scanner's option interface connector.
3. Turn the transportation lock to the **unlocked** position using a coin or similar disc.



4. Plug the power cord into an electrical outlet.



#### Caution:

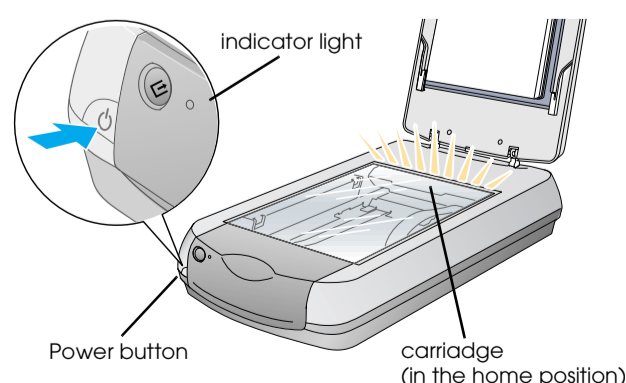
It is not possible to change the scanner's voltage. If the label on the back of the scanner does not show the correct voltage for your country, contact your dealer. Do not plug in the power cord.

5. Open the integrated TPU so that you can see the startup operation. Turn on the scanner by pressing the **Power** button.

The scanner turns on and begins to warm up. The indicator light flashes green until the scanner finishes warming up; it then stops flashing and stays green. This indicates that the scanner is ready for use.

#### Note:

The scanner turns off the fluorescent lamp if it does not receive any commands from the computer within 15 minutes.

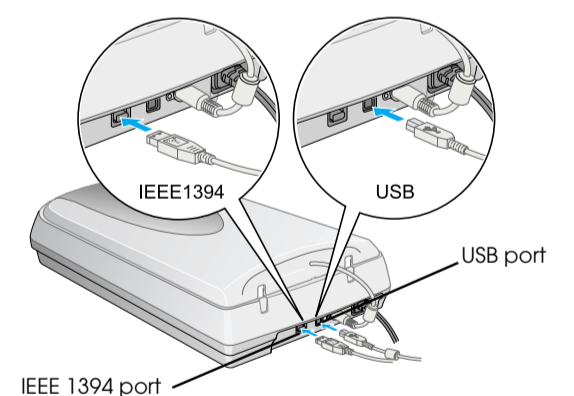


6. Connect one end of an interface cable to a suitable port on the back of the scanner.

#### Note:

FireWire Support 2.1 or later is needed to use FireWire I/F on Mac OS 8.6.

For USB 2.0 Hi-speed connection, connect the scanner directly to a USB 2.0 port on your PC using the USB 2.0 Hi-speed cable. Make sure USB 2.0 Host Driver by Microsoft is installed on your computer.



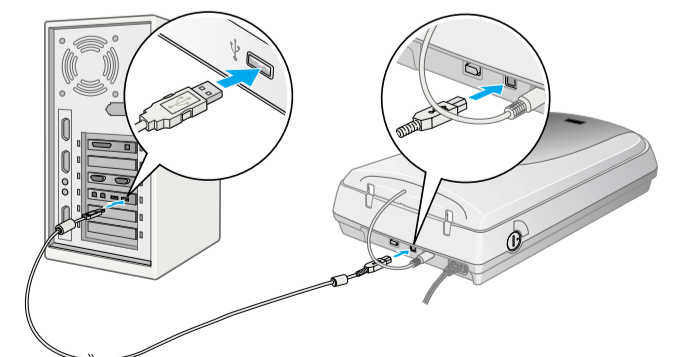
The following table indicates the possible combinations of interface and system.

		Windows	Macintosh
IEEE 1394		Microsoft® Windows® Me/2000 Professional/Me Home Edition/XP Professional	Mac OS® 8.6 to 9.x, Mac OS X 10.1.2 or later
USB	2.0	Microsoft Windows XP Home Edition/XP Professional/2000 Professional (Pre-installed model or upgrade from Windows 98/Me/2000 Professional pre-installed model)	-
	1.1	Microsoft Windows 98/Me/2000 Professional/XP Home Edition/XP Professional (Pre-installed model or upgrade from Windows 98/Me/2000 Professional pre-installed model)	Mac OS 8.6 to 9.x, Mac OS X 10.1.2 or later

7. Connect the other end of the cable to a suitable port on your computer.

#### Note:

Do not connect the scanner to multiple computers using both the USB cable and the IEEE 1394 cable at the same time.

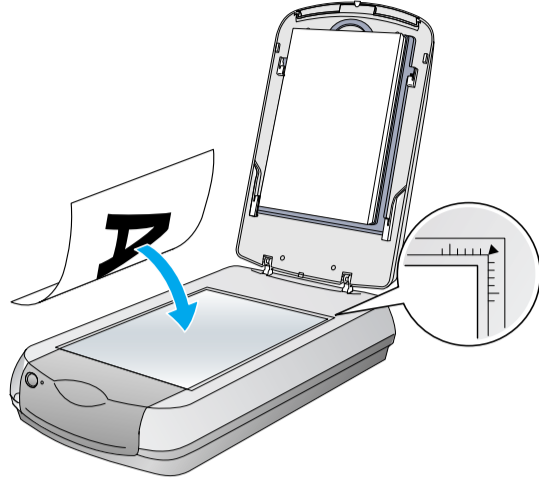




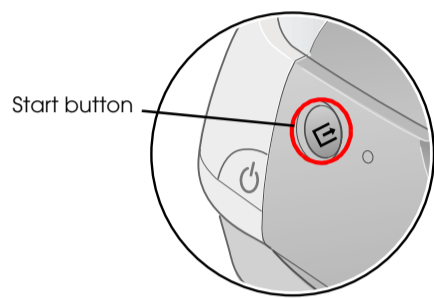
## 4 Your First Scan

To scan using the Start button and EPSON Smart Panel, follow the steps below.

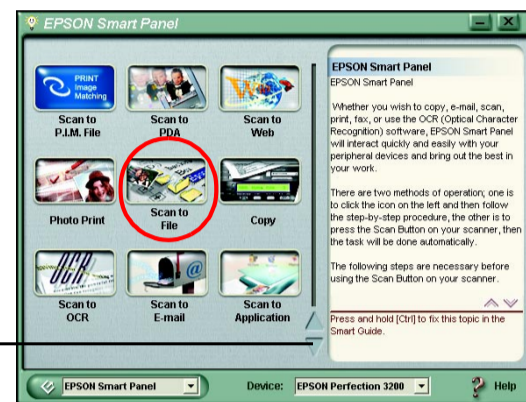
1. Open the integrated TPU and place your photo face down on the document table. Then close the integrated TPU.



2. Press the Start button on the scanner. After the EPSON Smart Panel software automatically starts, click the Scan to File icon.

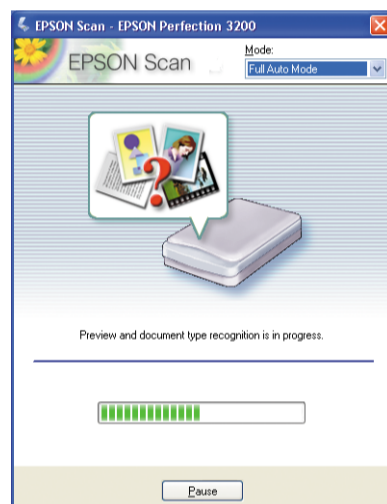


Click this arrow if the Scan to File icon does not appear.



**Note:**  
If the Scan to File icon does not appear in the dialog box, you must first click the down arrow to display the icon.

A progress bar appears on the screen and your photo is automatically scanned.

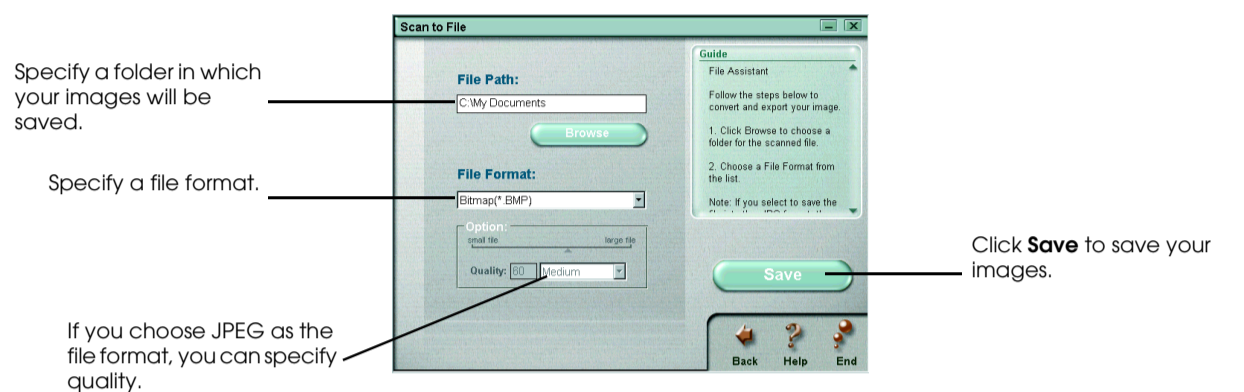


3. The Scan to File dialog box opens. If you want to scan another photo, place it on the document table, close the integrated TPU, and then click **Scan More**. Otherwise, click **Finish**.



**Note:**  
For help on EPSON Smart Panel, click the question mark at the lower right corner of the screen.

4. When the following dialog box appears, click **Browse** and specify a folder to use to save your images. Then select a file format from the File Format list. Click **Save** to save your images.



The image files are saved in the designated folder. You can now use the software of your choice to view, edit, or print the images.

**Note:**  
For users of Windows and Mac OS 8.6 to 9.x, you can use the Start button as the shortcut to common scanning functions. Pressing the Start button starts EPSON Smart Panel software by default. EPSON Smart Panel allows you to scan and send data directly to a specific application. For more information, see the Reference Guide included on the software CD and the online help.

## Viewing the Reference Guide

To learn more about your scanner, see the *Reference Guide* on the software CD.

1. Insert the software CD into the CD-ROM drive. If the CD has not been removed since you installed the software, remove it and then insert it again.

### For Windows users:

The EPSON Installer Program dialog box appears. Select your preferred language and then click **Next**.

### For users of Mac OS 8.6 to 9.x:

Double-click the **EPSON** icon inside the EPSON folder.

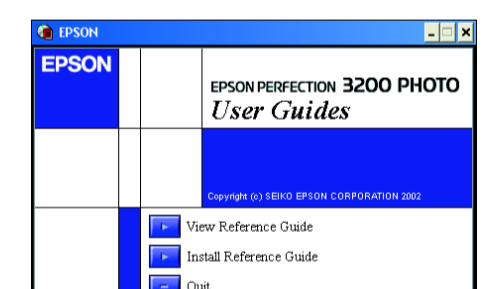
### For Mac OS X users:

Double-click the **Manual** folder inside the EPSON folder, and then double-click the **REF\_G** folder in your preferred language folder. Next, double-click **INDEX.HTM**.

2. Select **User Guides** and then click **Next**.



3. To view the *Reference Guide*, click **View Reference Guide**. To copy the *Reference Guide* to your computer, click **Install Reference Guide**.



## Safety Instructions

Read all these instructions and save them for later reference. Follow all warnings and instructions marked on the scanner.

Place the scanner close enough to the computer for the interface cable to reach it easily. Do not place or store the scanner outdoors, near excessive dirt or dust, water, heat sources, or in locations subject to shocks, vibrations, high temperature or humidity, direct sunlight, strong light sources, or rapid changes in temperature or humidity. Do not use with wet hands.

Place the scanner near an electrical outlet where the power cord can be easily unplugged.

Power-supply cords should be placed to avoid abrasions, cuts, fraying, crimping, and kinking. Do not place objects on top of power-supply cords and do not allow power-supply cords to be stepped on or run over. Be particularly careful to keep all power-supply cords straight at the ends and the points where they enter and leave the transformer.

Use only the type of power source indicated on the scanner's label.

Avoid using outlets on the same circuit as photocopiers or air control systems that regularly switch on and off.

If you use an extension cord with the scanner, make sure the total ampere rating of the devices plugged into the extension cord does not exceed the cord's ampere rating. Also, make sure the total ampere rating of all devices plugged into the electrical outlet does not exceed the electrical outlet's ampere rating. Do not place multiple loads on the electrical outlet.

Never disassemble, modify, or attempt to repair power cord, scanner, and option by yourself except as specifically explained in the scanner's guides.

Do not insert objects into any openings as they may touch dangerous voltage points or short out parts. Beware of electrical shock hazards.

Allow spaces behind the scanner for the cables, and space above the scanner so that you can raise the integrated TPU fully.

Unplug the scanner and refer servicing to qualified service personnel under the following conditions:  
The power cord or plug is damaged; liquid has entered the scanner; the scanner has been dropped or the case damaged; the scanner does not operate normally or exhibits a distinct change in performance. (Do not adjust controls that are not covered by the operating instructions.)

If you plan to use the scanner in Germany, the building installation must be protected by a 10 or 16 amp circuit breaker to provide adequate short-circuit protection and over-current protection for this scanner.

### For German-speaking users:

Bei Anschluss des Scanners an die Stromversorgung muss sichergestellt werden, dass die Gebäudeinstallation mit einer 10 A- oder 16 A-Sicherung abgesichert ist.

### For United Kingdom users:

**Warning:**  
This appliance must be earthed. Refer to the rating plate for the voltage and check that the appliance voltage corresponds to the supply voltage.

**Important:** The wires in the mains lead fitted to this appliance are coloured in accordance with the following code:  
Green and yellow - Earth  
Blue - Neutral  
Brown - Live

### If you have to fit a plug:

As the colours of the mains lead of this appliance may not match the coloured markings used to identify the terminals in a plug, please observe the following:

The green and yellow wire must be connected to the terminal in the plug which is marked with the letter E or with the earth symbol (⏏).

The blue wire must be connected to the terminal in the plug marked with the letter N.

The brown wire must be connected to the terminal in the plug marked with the letter L.

### For United Kingdom, Singapore and Hong Kong users:

If damage occurs to the plug, replace the cord set or consult a qualified electrician.

Replace fuses only with fuses of the correct size and rating.

All rights reserved. No part of this publication may be reproduced, stored in a retrieval system, or transmitted in any form or by any means, electronic, mechanical, photocopying, recording, or otherwise, without the prior written permission of SEIKO EPSON CORPORATION. The information contained herein is designed only for use with this EPSON scanner. EPSON is not responsible for any use of this information as applied to other scanners. Neither SEIKO EPSON CORPORATION nor its affiliates shall be liable to the purchaser of this product or third parties for damages, losses, costs, or expenses incurred by the purchaser or third parties as a result of: accident, misuse, or abuse of this product or unauthorized modifications, repairs, or alterations to this product, or (excluding the U.S.) failure to strictly comply with SEIKO EPSON CORPORATION's operating and maintenance instructions.

SEIKO EPSON CORPORATION shall not be liable for any damages or problems arising from the use of any options or any consumable products other than those designated as Original EPSON Products or EPSON Approved Products by SEIKO EPSON CORPORATION. SEIKO EPSON CORPORATION shall not be held liable for any damage resulting from electromagnetic interference that occurs from the use of any interface cables other than those designated as EPSON Approved Products by SEIKO EPSON CORPORATION. EPSON is a registered trademark of SEIKO EPSON CORPORATION. Microsoft and Windows are registered trademarks of Microsoft Corporation. Macintosh is a registered trademark of Apple Computer, Inc. Adobe and Photoshop are registered trademarks of Adobe Systems Incorporated.

**General Notice:** Other product names used herein are for identification purposes only and may be trademarks of their respective owners. EPSON disclaims any and all rights in those marks.

Copyright © 2002 by SEIKO EPSON CORPORATION, Nagano, Japan