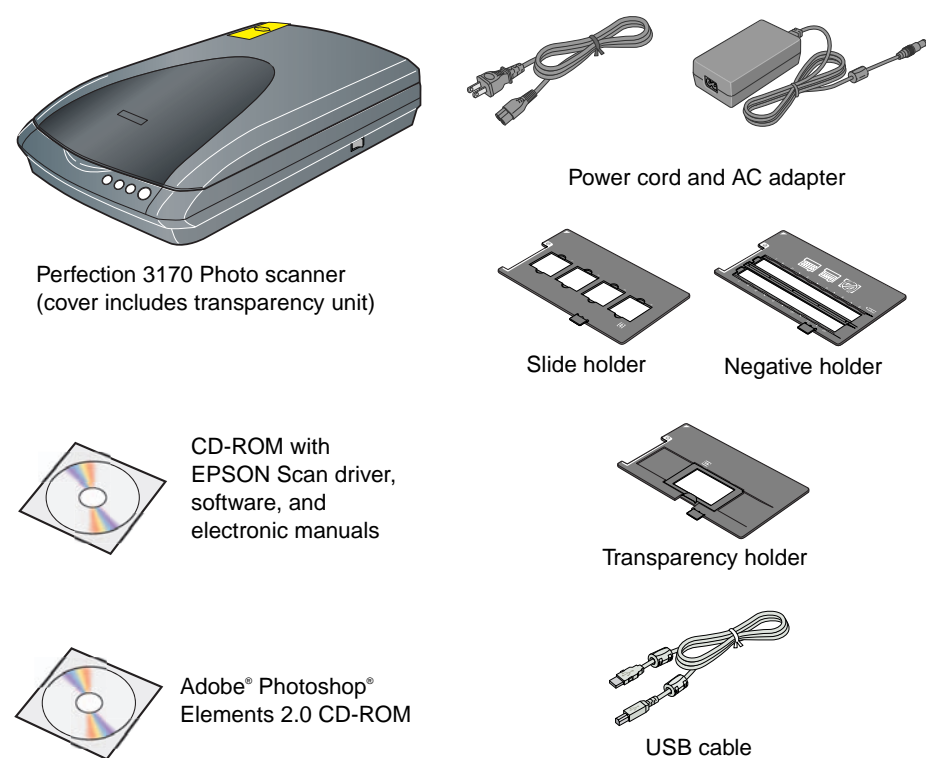


# Start Here

## EPSON Perfection™ 3170 Photo

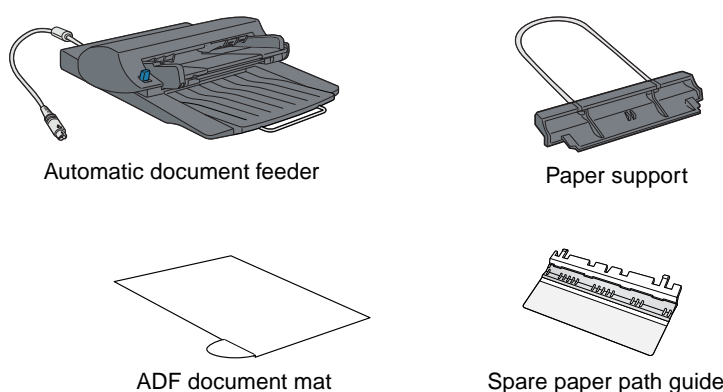
### 1 Unpack Your Scanner

1 Make sure you have all the accessories shown below for your EPSON® scanner:

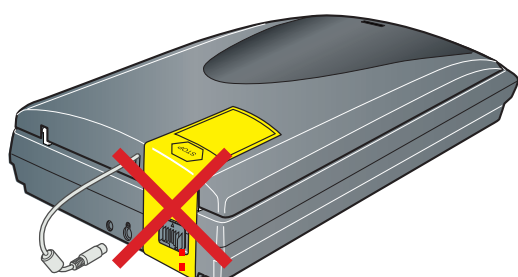


**Note:** The contents may vary in certain locations.

If you purchased the optional automatic document feeder (ADF), you will also have these items:



2 Remove all the packing tape, but leave the large sticker in place until you are instructed to remove it.



**IMPORTANT!**  
Leave the sticker in place until you are instructed to remove it

### 2 Install the Software

**Wait!** You must install your software before connecting the scanner to your computer. The installation process may take several minutes. Be sure to close all open programs and turn off any virus protection programs.

If you don't already have Adobe Photoshop or Photoshop Elements on your computer, install Photoshop Elements from the CD-ROM included with your scanner.

**Note:** These instructions are for Windows® and Macintosh® OS 8.6 to 9.x and OS X 10.2.x.

- 1 Insert the scanner software CD-ROM in the CD-ROM or DVD drive. The installer starts automatically.  
If it doesn't start, do the following:
  - Windows XP: Click **Start**, double-click **My Computer**, then double-click **EPSON**.
  - Windows 98, Me, and 2000: Double-click **My Computer**, then double-click **EPSON**.
  - Macintosh: Double-click the **EPSON CD-ROM** icon.
- 2 If you are using Mac OS 8.6 to 9.x, double-click the **EPSON** icon in the EPSON folder.  
If you are using Mac OS X, double-click the **Mac OS X** folder in the **EPSON** folder, then double-click the **EPSON** icon. Enter your Administrator name and password and click **OK**.
- 3 If you are prompted to select a language, select your preferred language.
- 4 Read the license agreement, then click **Agree**.
- 5 At the Software Installation screen, click **Install**.

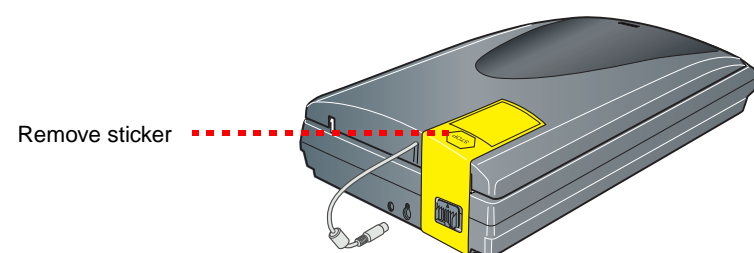


- 6 Follow the on-screen instructions to install each program. Click **Next** or **Finish** (Windows) or **Quit** (Macintosh) to continue, as needed. Note that EPSON Smart Panel™ installs in several steps.
- 7 At the end of the installation, click **Exit**.
- 8 If you see a Product Registration screen, register your scanner as instructed. At the last screen, click **Done** or close your browser.

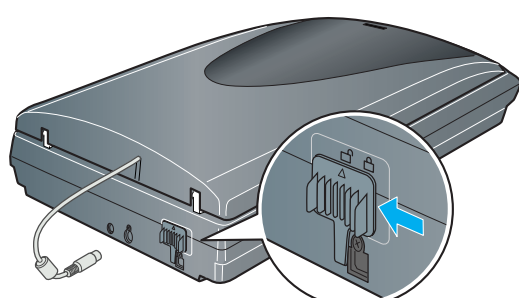
### 3 Connect the Scanner

After your software is installed, it's time to get connected.

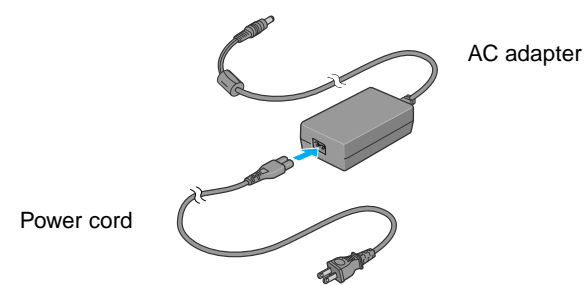
1 Remove the sticker from the back of the scanner.



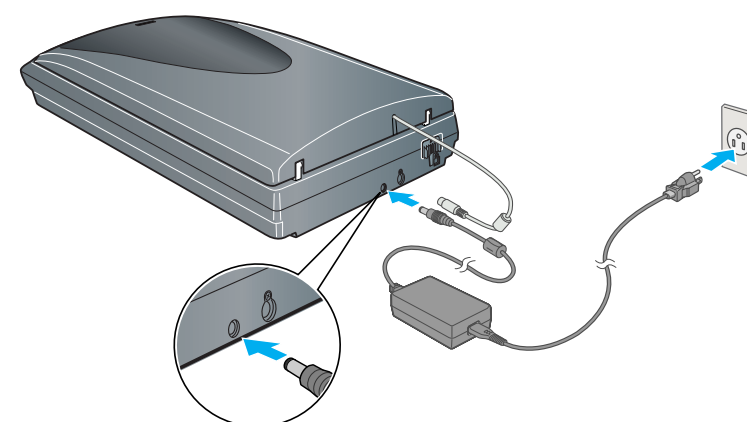
2 Locate the transportation lock on the back of the scanner and slide the lock to the left, as shown below.



3 Connect the power cord and AC adapter, as shown.



4 Connect the AC adapter to the scanner.

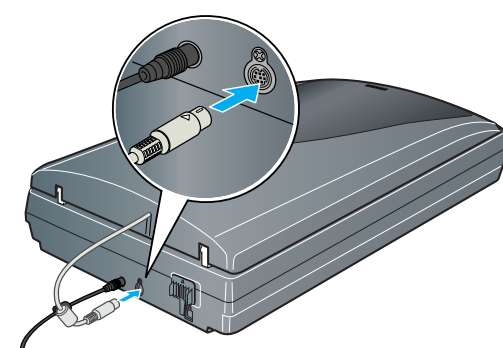


5 Plug the other end of the power cord into a grounded electrical outlet.

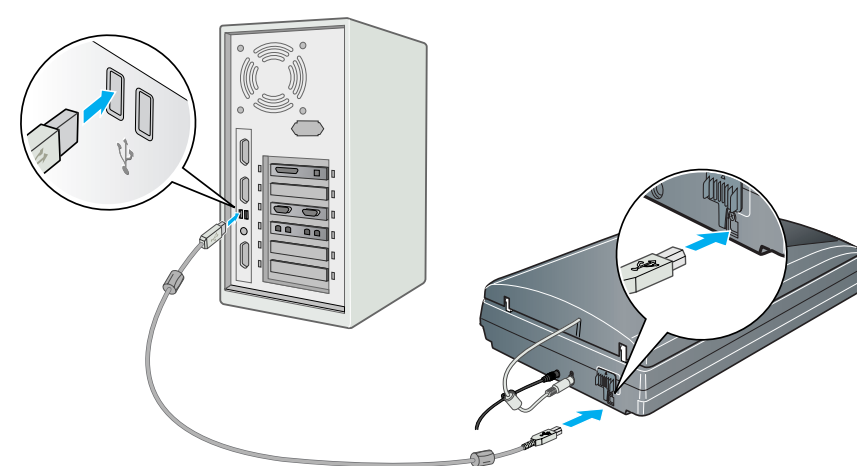
**Caution:**

- It is not possible to change the AC adapter's input or output voltage. If the label on the AC adapter does not show the correct voltage, contact your dealer. Do not plug in the power cord.
- Whenever you unplug the scanner, wait at least 10 seconds before plugging it back in. Rapidly plugging and unplugging the scanner can damage it.

6 Connect the cable for the built-in transparency unit.



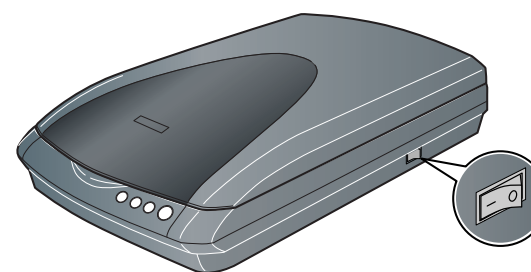
7 Use the USB cable that came with your scanner. Plug the square end of the USB cable into the scanner's USB port. Then plug the flat end into any available USB port on your computer or hub.



**Note:** Your scanner may not work correctly if you use a USB cable other than the one supplied by EPSON or if you connect your scanner through more than one hub.

8 Turn on the power switch on the side of the scanner.

The scanner turns on and the Start button flashes green. It stops flashing and turns green when the scanner is ready.



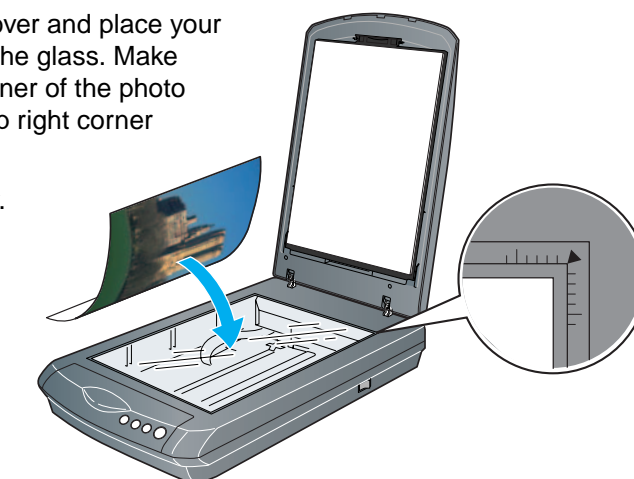
# Scanner Basics

## Your First Scan

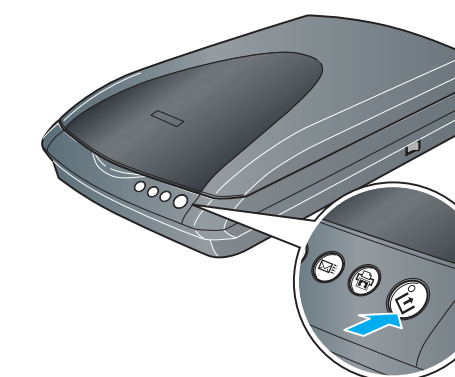
The Start button on your scanner automatically opens Smart Panel, making it easy for you to scan your images for many different uses. Here's how you can use the Start button and Smart Panel to scan photos and save them as files.

1 Raise the scanner cover and place your photo face down on the glass. Make sure the top right corner of the photo is aligned with the top right corner of the scanner.

Then close the cover.



2 Press the Start button on your scanner.



**Note:** In Windows XP, you may see a message the first time you press the Start button. Select **EPSON SMART PANEL**, click **Always use this program for this action**, then click **OK**.

EPSON Smart Panel opens on your computer.



3 Click the **Scan and Save** icon.

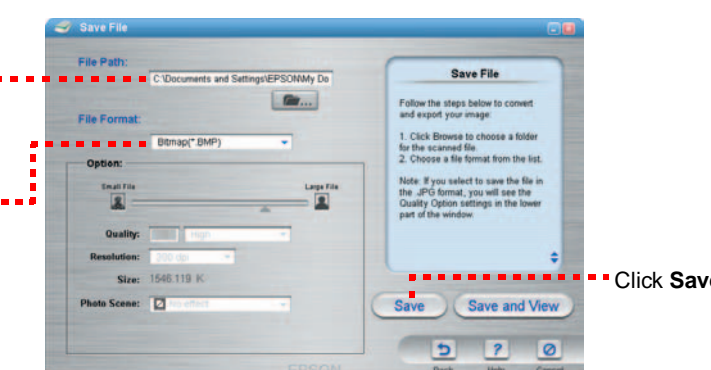
A progress meter appears on the screen and your document is automatically scanned. After your document is scanned, the Verify Assistant opens.

4 Click **Next** to continue.

5 When you see the following screen, select a location and file type for your scanned image, then click **Save**.

Specify the path to the folder where you want to save your scanned image

Select a file format



Click **Save**

Turn over ----->

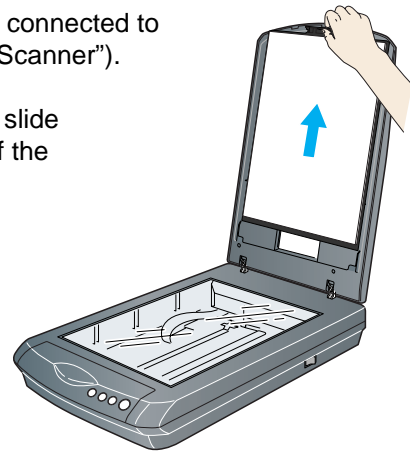
## Scanning Film

The scanner cover has a built-in transparency unit (TPU). To scan negative strips, slides, or transparencies, you need to remove the document mat from the cover and insert the film in a holder.

The scanner comes with 3 different film holders: one for negative strips, one for slides, and one for medium-format transparencies.

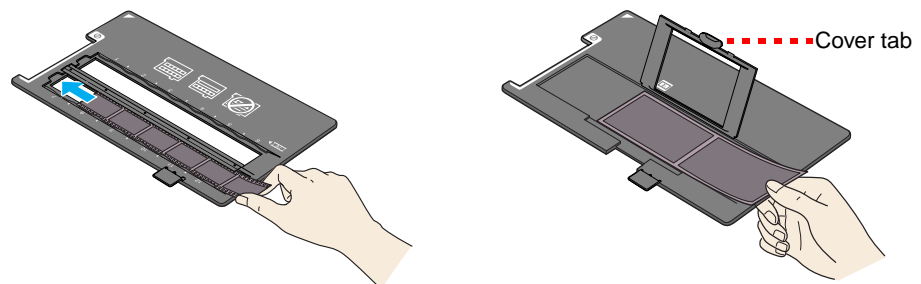
**1** Make sure the transparency unit cable is connected to the scanner (see step 6 in "Connect the Scanner").

**2** Lift the scanner cover all the way up and slide the reflective document mat up and off of the scanner cover.



**3** Follow the instructions for the type of film you are scanning:

If you are scanning negative strips or medium-format transparencies, slide the film into the corresponding holder, with the film's shiny side facing down.

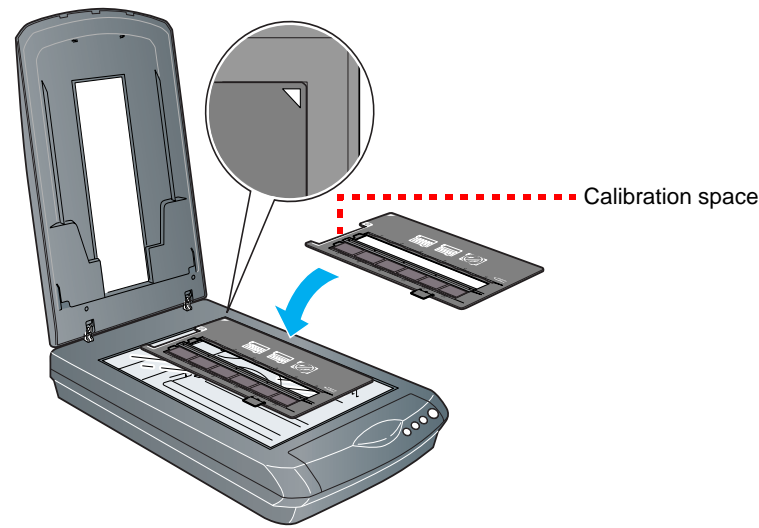


35-mm negative or film strips

Medium-format transparencies: Slide the film into the holder as shown. Then lower the cover and press the tab to lock it in place.

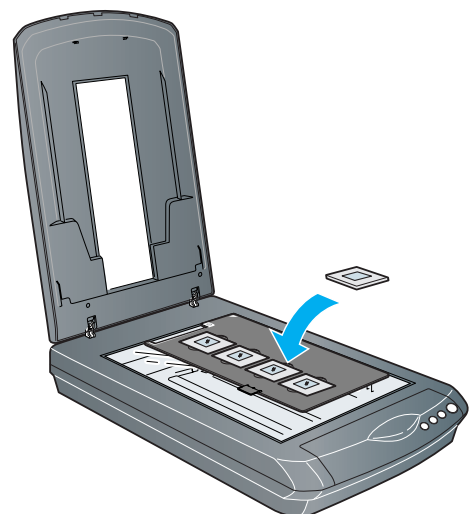
If you are scanning slides, place the holder on the scanner first, then place the slides in the holder, as shown at the bottom of the sheet.

**4** Place the film holder on the scanner as shown. Make sure the white triangle on the holder points to the upper-right corner of the scanner.



**Note:** Make sure the narrow calibration space at the top of the film holder is uncovered to ensure an accurate scan.

If you are scanning slides, place the holder on the scanner. Then place the slides in the holder.



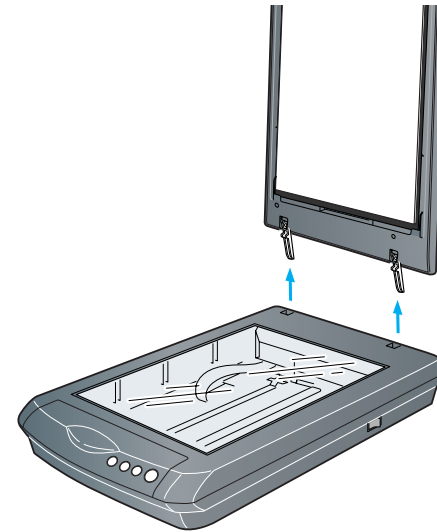
**5** Close the scanner cover.

## Scanning a Multi-Page Document

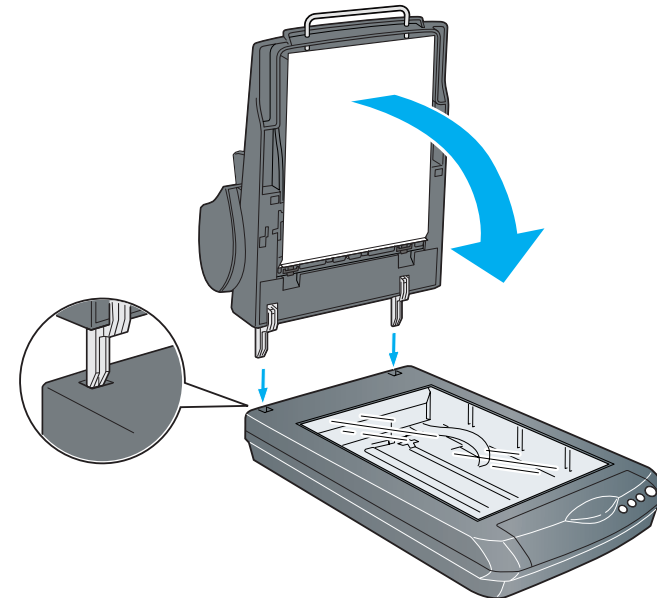
The optional automatic document feeder (ADF) allows you to automatically load multi-page documents into your scanner. Make sure the scanner is turned off, then follow these steps to install the ADF on the scanner and load a stack of pages:

**1** Unplug the transparency unit cable from the back of the scanner.

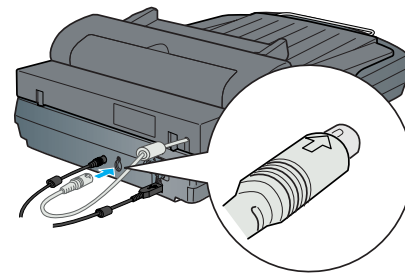
**2** Remove the scanner cover by lifting it straight up:



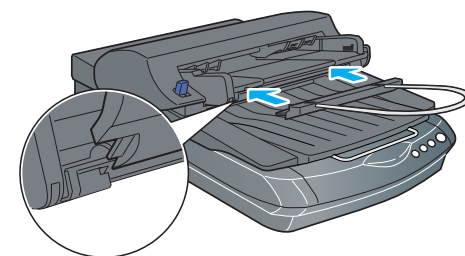
**3** Make sure the scanner glass is clean. Insert the hinges on the ADF into the square holes at the back of the scanner, then lower the ADF.



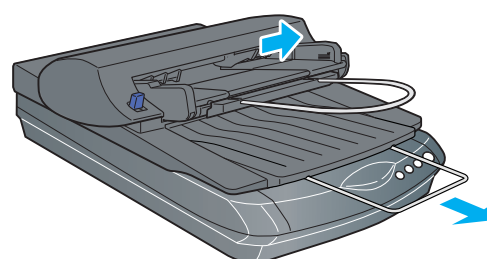
**4** Plug the ADF connector cable into the round port at the back of the scanner.



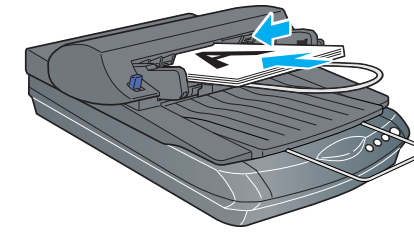
**5** Attach the paper support.



**6** To load a document in the feeder, first pull out the lower paper support and slide out the edge guide.



**7** Then insert your document face up with the first page on top. Make sure the top edge is facing into the ADF, then slide the document all the way in.

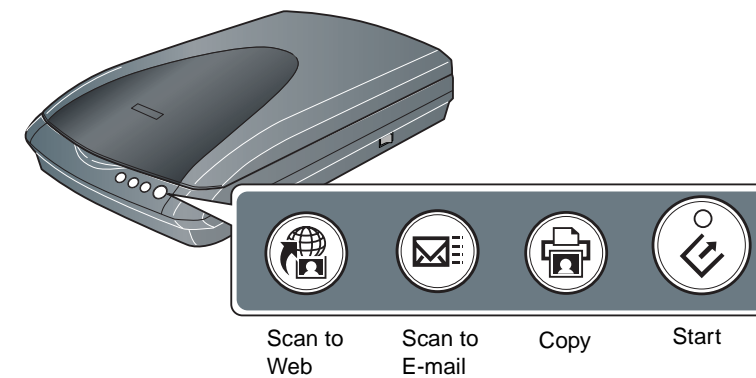


**Note:** After you install the ADF, you can still scan by placing a photo or document directly on the scanner glass. Lift up the ADF, place the photo on the glass, then place the ADF document mat on top of the photo. Lower the ADF before you scan.

## Using the Scanner Buttons

The scanner buttons make scanning easy. Just place your document face down on the scanner and press the button for the type of scan you want. Smart Panel automatically opens and scans your documents. Then follow the easy on-screen instructions to finish your task.

**Note:** If you are using Mac OS X, make sure Smart Panel is installed in a Mac OS X environment, not Classic mode. Otherwise, Classic mode may start when you press a scanner button.



## Problems?

First, check the Start button light on the scanner.

	Flashing green	Warming up or scanning.
	Green	Ready to scan.
	Flashing red	Make sure the transportation lock is unlocked (see section 3). Try restarting your computer and turning the scanner off and then on again. If the red light is still flashing, contact your dealer or EPSON.
	Off	Make sure the scanner is connected to your computer and the power switch is turned on.

If your problem is listed here, try these suggestions.

<b>The New Hardware Wizard appears on your screen.</b>	Click <b>Cancel</b> and follow the steps in "Install the Software" on the other side of this sheet. Disconnect the scanner before installing the software.
<b>The scanner makes a grinding noise when it is turned on.</b>	Make sure the transportation lock is unlocked (see section 3).
<b>You see an error message when you try to scan, or the scanner doesn't scan.</b>	Make sure the scanner is connected to your computer and plugged into a power source. Uninstall and reinstall EPSON Scan.

Here's where to look for more answers:

- Double-click the *Perfection 3170P Reference Guide* icon on your desktop. (If you didn't install it, insert the scanner software CD-ROM in the CD-ROM or DVD drive. At the Custom Installation screen, select **Scanner Reference Guide**, then click **Install**.)
- On-screen Help for Smart Panel and EPSON Scan:** Click the Help button or question mark that appears on the screen when you're using these programs.

## Safety Instructions

Read all these instructions and save them for later reference. Follow all warnings and instructions marked on the scanner.

**Caution:** Be sure the AC power cord meets the relevant local safety standards.

Place the scanner close enough to the computer for the interface cable to reach it easily. Do not place or store the scanner or the AC adapter outdoors, near excessive dirt or dust, water, heat sources, or in locations subject to shocks, vibrations, high temperature or humidity, direct sunlight, strong light sources, or rapid changes in temperature or humidity. Do not use with wet hands.

Place the scanner and the AC adapter near an electrical outlet where the power cord can be easily unplugged.

Power supply cords should be placed to avoid abrasions, cuts, fraying, crimping, and kinking. Do not place objects on top of power-supply cords and do not allow the AC adapter or power-supply cords to be stepped on or run over. Be particularly careful to keep all power-supply cords straight at the ends and the points where they enter and leave the AC adapter.

Use only the AC adapter model A221B/E that comes with your scanner. Using any other adapter could cause fire, electrical shock, or injury.

The AC adapter is designed for use with the scanner with which it was included. Do not attempt to use it with other electronic devices unless specified.

Use only the type of power source indicated on the AC adapter's label, and always supply power directly from a standard domestic electrical outlet with the AC power cord that meets the relevant local safety standards.

Avoid using outlets on the same circuit as photocopiers or air control systems that regularly switch on and off.

If you use an extension cord with the scanner, make sure the total ampere rating of the devices plugged into the extension cord does not exceed the cord's ampere rating. Also, make sure the total ampere rating of all devices plugged into the electrical outlet does not exceed the electrical outlet's ampere rating. Do not place multiple loads on the electrical outlet.

Never disassemble, modify, or attempt to repair the AC adapter, power cord, scanner, and option by yourself except as specifically explained in the scanner's guides.

Do not insert objects into any opening as they may touch dangerous voltage points or short out parts. Beware of electrical shock hazards.

Unplug the scanner and the AC adapter, and refer servicing to qualified service personnel under the following conditions:

The power cord or plug is damaged; liquid has entered the scanner or the AC adapter; the scanner or the AC adapter has been dropped or the case damaged; the scanner or the AC adapter does not operate normally or exhibits a distinct change in performance. (Do not adjust controls that are not covered by the operating instructions.)

Unplug the scanner and the AC adapter before cleaning. Clean with a damp cloth only. Do not use liquid or aerosol cleaners.

If you are not going to use the scanner for a long period, be sure to unplug the AC adapter from the electrical outlet.

**For US and Canadian users:** To reduce the risk of fire, use only the included power cord or a 6 to 10 foot long UL-approved type SPT-2 or heavier, 2 x 18 AWG cord with a 125 V 10 A plug and 125 V 7 A connector.

If your AC adapter is equipped with a polarized alternating-current line plug (a plug having one blade wider than the other) and a polarized power inlet, you must insert the plug into a power outlet in a specific way. This is a safety feature. If you are unable to insert the plug properly, try reversing the plug. If this fails again, contact an electrician to replace your outlet. Be sure to use only the polarized power cord that comes with the scanner.

**For United Kingdom, Singapore, and Hong Kong users:** Replace fuses only with fuses of the correct size and rating.

**For United Kingdom users:** The following safety information applies to the AC adapter.

**Warning:** Refer to the rating plate for the voltage and check that the appliance voltage corresponds to the supply voltage.

**Important:** The wires in the mains lead fitted to this appliance are coloured in accordance with following code: Blue - Neutral, Brown - Live

**If you have to fit a plug:** As the colours of the mains lead of the appliance may not match the coloured markings used to identify the terminals in a plug, please observe the following:

The blue wire must be connected to the terminal in the plug marked with the letter N.

The brown wire must be connected to the terminal in the plug marked with the letter L.

If damage occurs to the plug, replace the cord set or consult a qualified electrician.

All rights reserved. No part of this publication may be reproduced, stored in a retrieval system, or transmitted in any form or by any means, electronic, mechanical, photocopying, recording, or otherwise, without the prior written permission of SEIKO EPSON CORPORATION. The information contained herein is designed only for use with this EPSON scanner. EPSON is not responsible for any use of this information as applied to other scanners. Neither SEIKO EPSON CORPORATION nor its affiliates shall be liable to the purchaser of this product or third parties for damages, losses, costs, or expenses incurred by the purchaser or third parties as a result of: accident, misuse, or abuse of this product or unauthorized modifications, repairs, or alterations to this product, or (excluding the U.S.) failure to strictly comply with SEIKO EPSON CORPORATION's operating and maintenance instructions.

SEIKO EPSON CORPORATION shall not be liable for any damages or problems arising from the use of any options or any consumable products other than those designated as Original EPSON Products or EPSON Approved Products by SEIKO EPSON CORPORATION. SEIKO EPSON CORPORATION shall not be held liable for any damage resulting from electromagnetic interference that occurs from the use of any interface cables other than those designated as EPSON Approved Products by SEIKO EPSON CORPORATION. EPSON is a registered trademark of SEIKO EPSON CORPORATION. Microsoft and Windows are registered trademarks of Microsoft Corporation. Macintosh is a registered trademark of Apple Computer, Inc.

**General Notice:** Other product names used herein are for identification purposes only and may be trademarks of their respective owners. EPSON disclaims any and all rights in those marks.

Copyright © 2003 by SEIKO EPSON CORPORATION Printed on recycled paper.