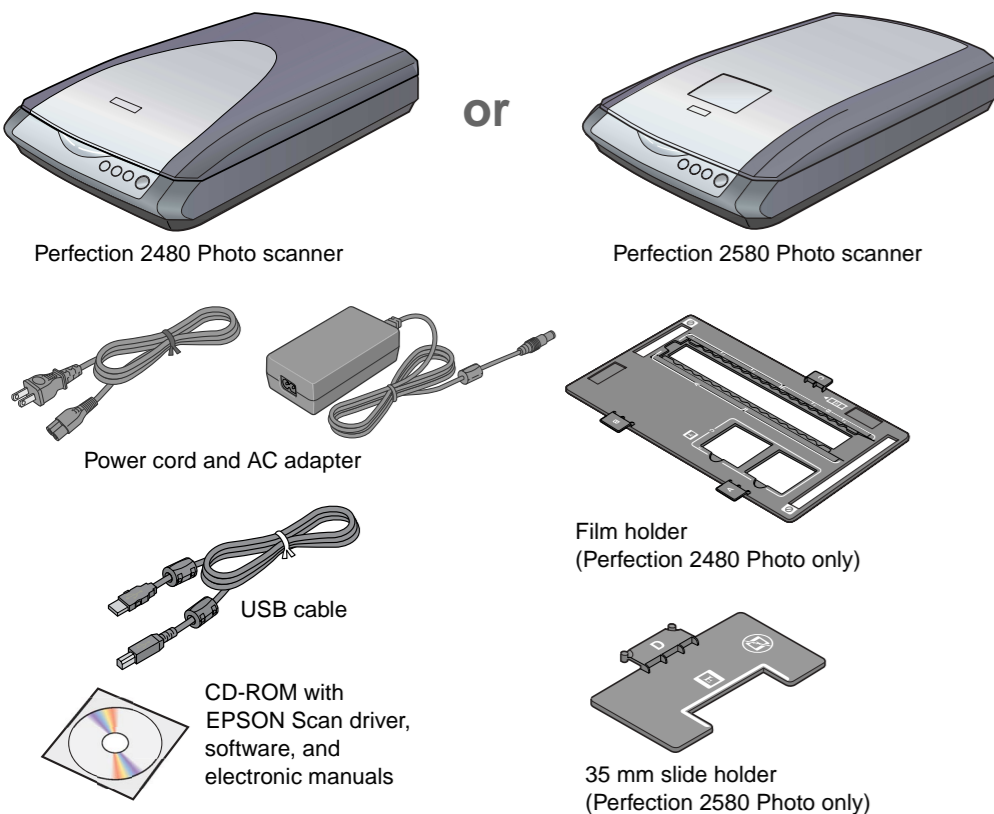


Start Here

EPSON PERFECTION™ 2480 PHOTO
EPSON PERFECTION™ 2580 PHOTO

1 Unpack Your Scanner

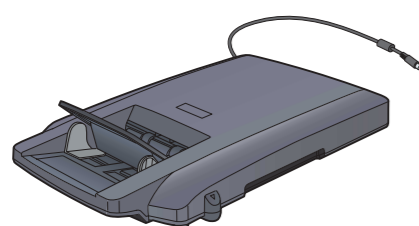
1 Make sure you have everything for your EPSON® scanner:



Note:

- The contents may vary in certain locations.
- The setup illustrations show the Perfection 2480 Photo, but the instructions are the same for the Perfection 2580 Photo, unless noted otherwise.

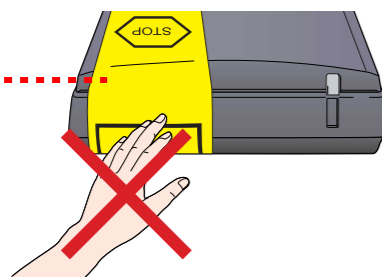
If you purchased the optional Multi Photo Feeder (B81337*), you will also have the item below.



Using the optional Multi Photo Feeder, you can scan a number of photos or business cards in a single step. This easy-to-install option gives you great opportunity. For more details, refer to the *Online Reference Guide*.

2 Remove all the packing tapes, but leave the large sticker in place until instructed to remove it.

IMPORTANT! Leave the sticker in place until you are instructed to remove it.



2 Install the Software

Wait! You must install your software before connecting the scanner to your computer.

Be sure to close all open programs and turn off any virus protection programs before installing the software.

Note:

- These instructions are for Windows® 98 SE or later, Mac® OS 9.1 or later, and Mac OS X 10.2.x or later.
- EPSON Scan does not support the UNIX File System (UFS) for Mac OS X. You must install the software on a disk or in a partition that does not use UFS.
- Mac OS X 10.3 users: Do not use the Fast User Switching function while using the scanner.

1 Insert the scanner software CD-ROM in the CD-ROM or DVD drive. The installer starts automatically.

If it does not start, do the following:

- Windows XP: Click **Start**, double-click **My Computer**, and then double-click **EPSON**.
- Windows 98 SE, Me, and 2000: Double-click **My Computer**, and then double-click **EPSON**.
- Mac OS X: Double-click the **EPSON CD-ROM** icon.

2 **For Macintosh users:** (If you are using Windows, skip this step and go on to the next step.)

Select the appropriate OS icon in the **EPSON** folder, and then double-click it. Enter your Administrator name and password, and then click **OK**.

3 If a message appears to prompt you to disable your virus protection program, click **Continue**.

4 Read the license agreement, and then click **Agree**.

5 On the Software Installation screen, click **Install**.



Note: If you are installing the software on Mac OS 9, you may see a prompt to update your Carbon Library. After the CarbonLib installation is complete and you restart your system, double-click the appropriate OS icon in the **EPSON** folder, and then click **Install** to continue the installation.

6 Follow the on-screen instructions to install each program. Note that EPSON Smart Panel™ installs in several steps.

7 At the end of the installation, click **Exit** or **Restart Now**.

Go on to the next section, "Connect the Scanner."

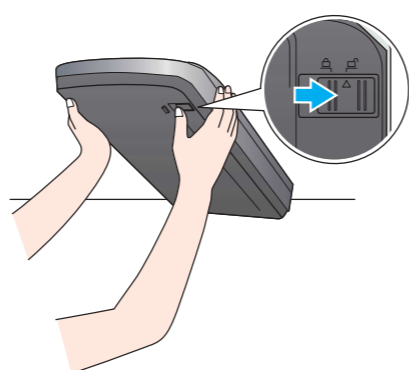
3 Connect the Scanner

After your software is installed, it is time to get your scanner connected.

1 Locate the transportation lock on the bottom of the scanner, and then remove the sticker on the transportation lock.

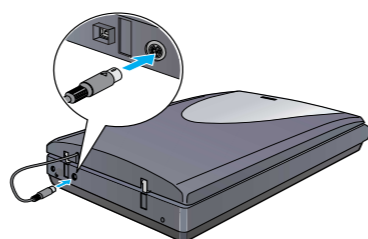
Caution: Do not turn the scanner over at any time; this may damage the scanner.

2 Slide the lock to the unlock position, as shown below.

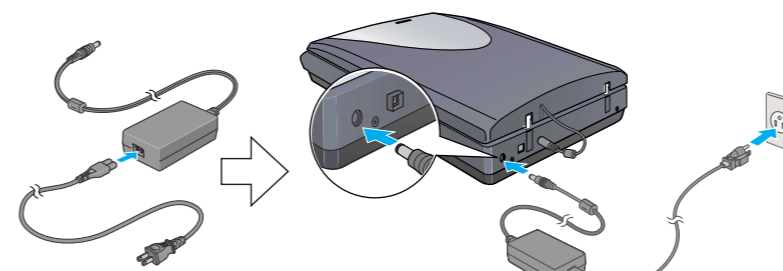


3 Remove the sticker from the back of the scanner.

4 Connect the cover cable to the option connector.



5 Connect the power cord and the AC adapter, and then connect the power cord to the scanner. Plug the other end of the power cord into a grounded electrical outlet.

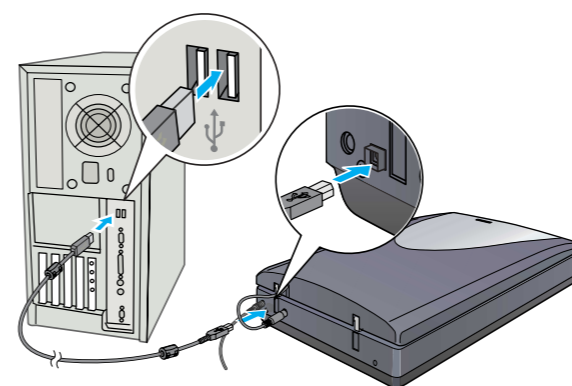


The scanner turns on and the Start button light flashes in green. It stops flashing and turns green when the scanner is ready.

Caution:

- It is not possible to change the AC adapter's input or output voltage. If the label on the AC adapter does not show the correct voltage, contact your dealer. Do not plug in the power cord.
- Whenever you unplug the scanner, wait at least 10 seconds before plugging it back in. Rapidly plugging and unplugging the scanner can damage it.

6 Plug the square end of the USB cable that comes with your scanner into the scanner's USB port. Then plug the flat end into any available USB port on your computer.



Caution: The interface cable connectors have only one correct orientation. Ensure the correct orientation of a connector before inserting it into the appropriate port.

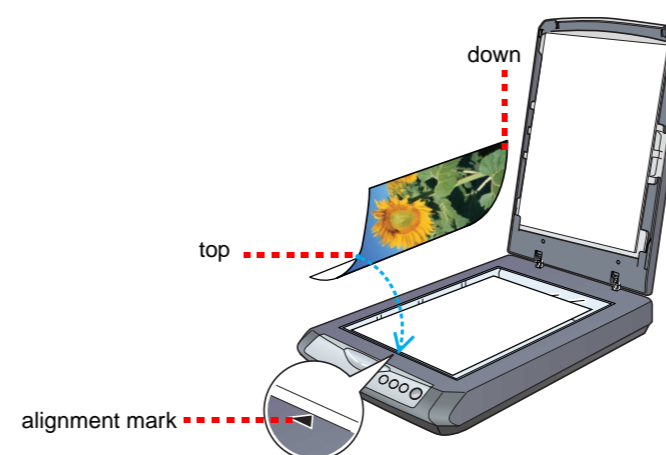
Note: Your scanner may not work correctly if you use a USB cable other than the one supplied by Epson, or if you connect your scanner through more than one hub system.

Scanner Basics

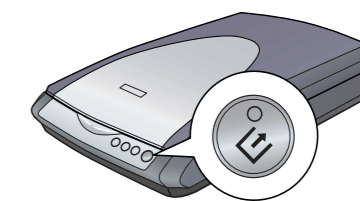
Your First Scan

The Start button on your scanner automatically opens EPSON Smart Panel, making it easy for you to scan your documents for many different uses. Here is how you can use the Start button and EPSON Smart Panel to scan photos and save them as files.

1 Raise the scanner cover and place a document on the document table, with the side to be scanned facing down and the top of the document toward the alignment mark. Make sure that the center of the document is aligned with the alignment mark. Then close the cover.



2 Press the Start button on your scanner.

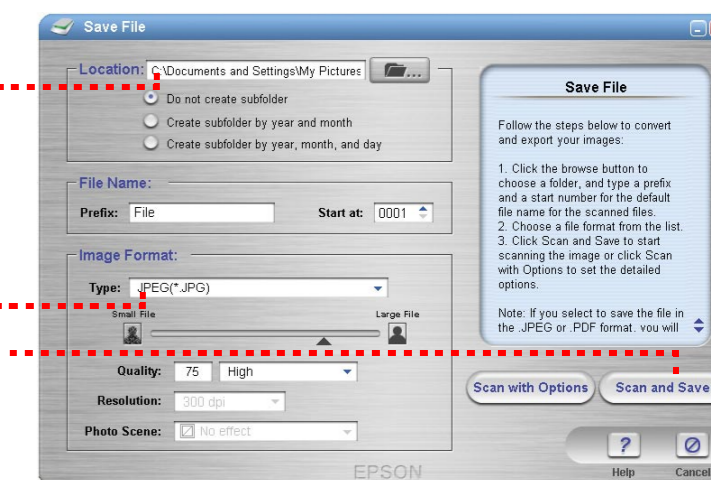


Note: On Windows XP, you may see a message the first time you press the Start button. Select **EPSON Smart Panel for Scanner**, click **Always use this program for this action**, and then click **OK**.

EPSON Smart Panel opens on your computer.



3 Click the Scan and Save icon. The following screen appears. Select a location and file type for your scanned image, and then click the Scan and Save button.



Specify the path to the folder where you want to save your scanned image

Select a file format

Click Scan and Save

Note:

- To scan the image with option, click **Scan with Options**.
- In the Home Mode or Professional Mode, you can scan a color faded photo or dirty photo using the **Image Adjustments** (or **Adjustments** in the Professional Mode) settings. For details on changing mode and other functions, see the *Online Reference Guide*.

4 EPSON Scan automatically starts. It then scans the document and saves the image to the specified folder.

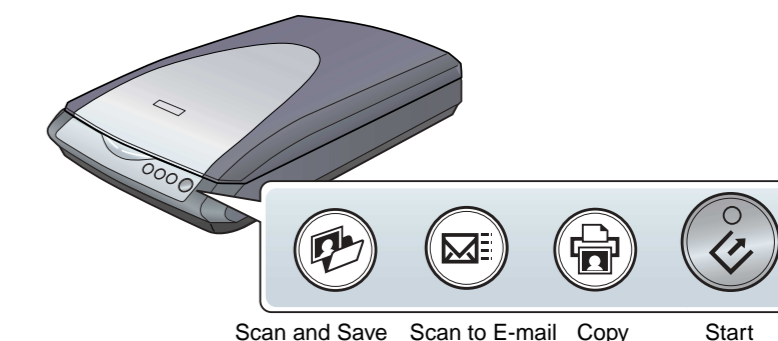
Perfection 2480/2580 Photo provides you with various useful functions to get the finest quality in scanning. See the *Online Reference Guide* for more information.

Using the Scanner Buttons

The scanner buttons make scanning easy. Just place your document face down on the scanner and press the button for the type of scan you want. EPSON Smart Panel automatically opens and scans your document. Then follow the easy on-screen instructions to finish your task. See the *Online Reference Guide* for more information.

Note:

- Before you use the scanner buttons, make sure EPSON Scan and EPSON Smart Panel are installed.
- If you are using Mac OS X, make sure EPSON Smart Panel is installed in a Mac OS X environment, not the Classic mode. Otherwise, the Classic mode may start when you press a scanner button.



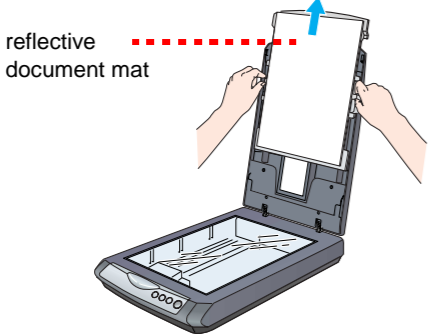
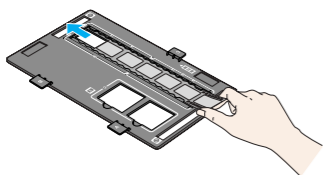
Turn over ----->

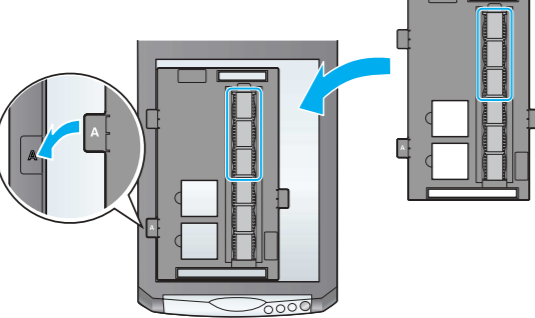
Loading Film

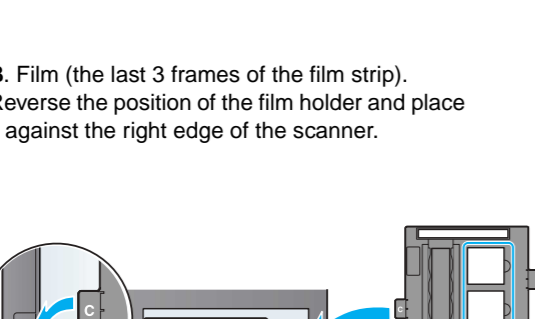
Note:

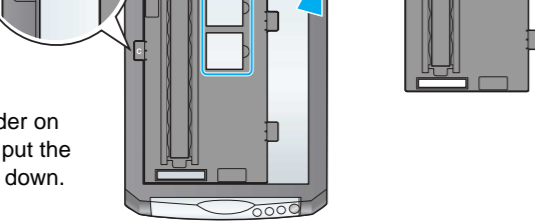
- Make sure the EPSON Scan driver is installed correctly.
- Make sure the scanner and your computer are turned on, and they are connected correctly (see step 4 in "Connect the Scanner").
- We recommend that you handle your film by taking its edge gently, or you may wear gloves when touching your film; otherwise you may damage it.

For Perfection 2480 Photo

- 1 Make sure the cover cable is connected to the option connector (see step 4 in "Connect the Scanner").
- 2 Raise the scanner cover all the way up, and then slide the reflective document mat up and off the scanner cover. 
- 3 Slide a film into the film holder with its face (the side you can see the image correctly) down. 
- 4 Place the film holder in the correct position for your film type. Be sure to match the alignment marks on the film holder tab with those on the scanner. Set each film tab by inserting its projection in the hole on the scanner.

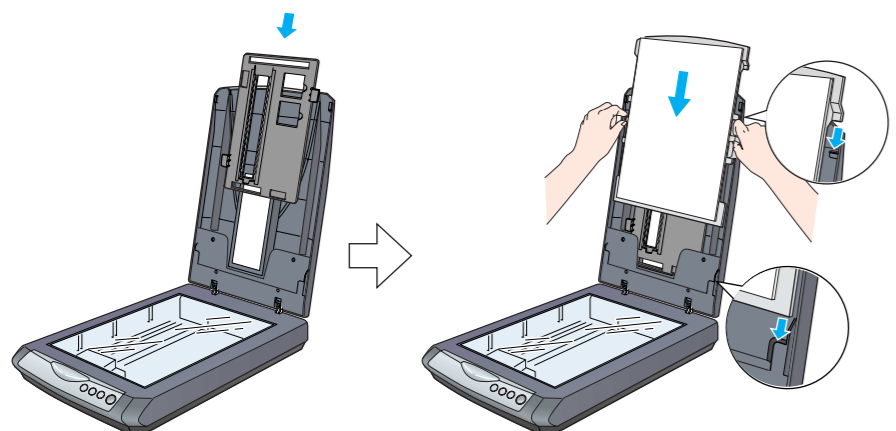
A. Film (the first 3 frames of the film strip). Place the film holder against the left edge of the scanner. 

B. Film (the last 3 frames of the film strip). Reverse the position of the film holder and place it against the right edge of the scanner. 

C. Slides. Place the holder on the scanner glass, then put the slides in the holder face down. 

Note: To get an accurate scan, make sure the narrow calibration window at the top of the film holder is clean and not covered by any objects.

- 5 Close the scanner cover.
- 6 When you finish scanning, remove the film from the film holder. While referring to the illustration below, slide the film holder into the scanner cover, and then replace the reflective document mat.



For Perfection 2580 Photo

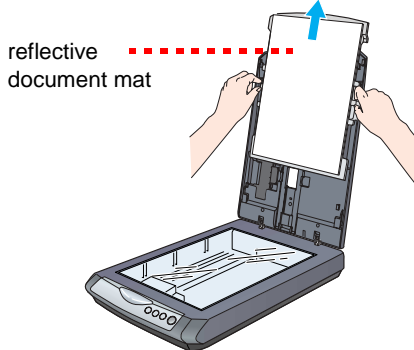
Using the Auto Film Loader (for 35 mm film strip)

The Perfection 2580 Photo scanner cover has a built-in Auto Film Loader on the scanner cover to provide easy film loading.

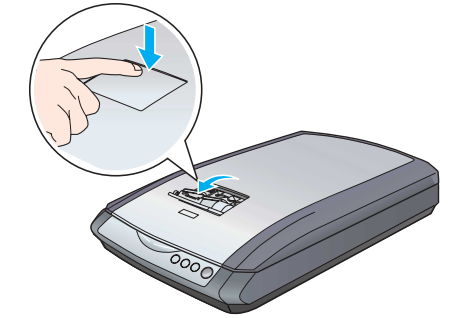
Note:

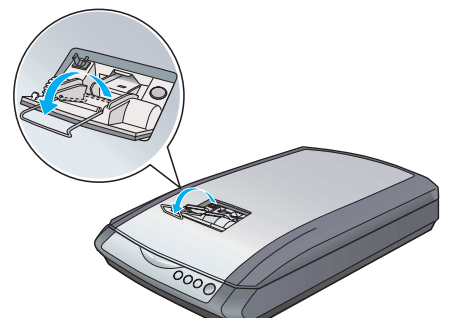
- Be sure the film strip is more than 74 mm and less than 232 mm: otherwise it may cause film jam.
- Do not scan a damaged film using the Auto Film Loader; it may damage the film, the scanner, or both.
- Some films are not supported by the Auto Film Loader. See the *Online Reference Guide* for details.

- 1 Make sure the Start button light is turn on green and the cover cable is connected to the option connector (see step 4 in "Connect the Scanner").

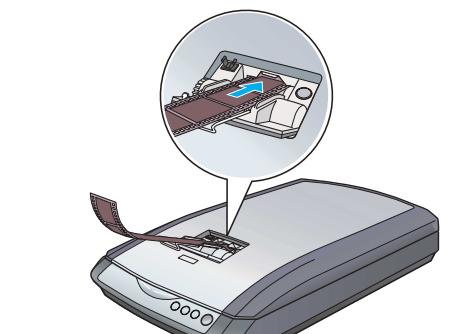
- 2 Raise the scanner cover all the way up, and then slide the reflective document mat up and off the scanner cover. 

- 3 Make sure there is nothing on the glass, and then close the scanner cover.

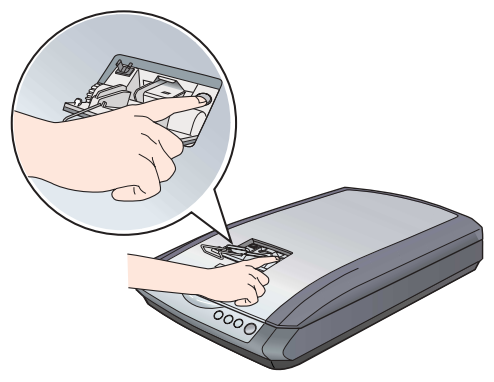
- 4 Push the film feeder cover to open it. 

- 5 Open the film guide. Secure the film guide by pushing down the front end of the film guide gently until you hear a click. 

Note: If you close the film guide while it is still in use, the loaded film may become damaged.

- 6 Load a film into the film feeder with its face (the side you can see the image correctly) down. The film in the film feeder is automatically loaded into the scanning position, and then the Start button light turns on green. 

Note: When loading starts, remove your hand from the film; otherwise, it may cause a film jam.

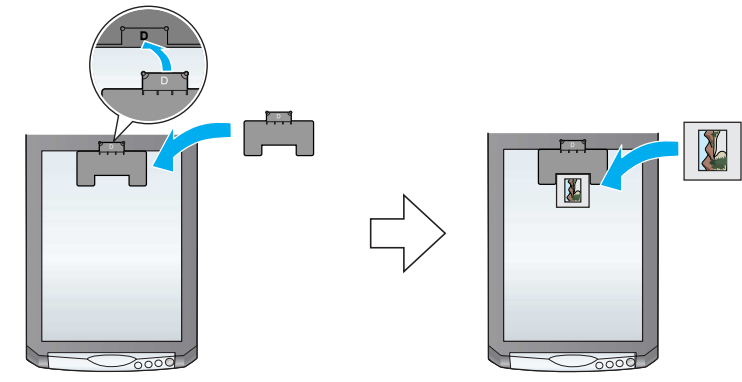
- 7 When you finish scanning, press the Eject button to eject the film. After the Start button light turns on green, you can remove the film. After you finish ejecting your films, close the film guide and then close the film feeder cover. 

Note:

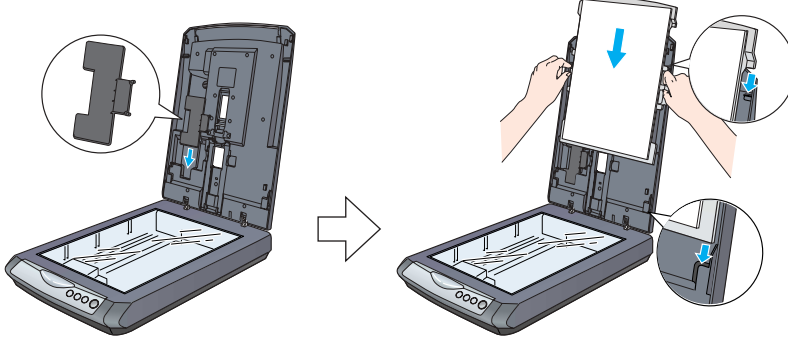
- Do not pull out the film by force. Wait until it is ejected automatically.
- Do not turn off the scanner before the film is ejected.
- If the Start button light is flashing in red, a film jam may have happened (see "Problems?").

Using the 35 mm slide holder

You can scan a 35 mm slide using the 35 mm slide holder.





- 1 Place the 35 mm slide holder by placing its alignment mark "D" on that of the scanner, and then insert the projection of the film tab in the hole on the scanner. Next, place a 35 mm slide vertically face down (so that you can see the frame inside the slide vertically) as shown below, and then fix it on the 35 mm slide holder. 

Note: Be careful not to place the slide horizontally, or you may not be able to scan normally.

- 2 When you finish scanning, remove the film from the 35 mm slide holder. While referring to the illustration below, slide the 35 mm slide holder into the scanner cover, and then replace the reflective document mat. 

Problems?

First, check the Start button light on the scanner.

 Flashing in green	Warming up or scanning.
 Green	Ready to scan.
 Flashing in red	Make sure the transportation lock is unlocked (see section 3 "Connect the Scanner"). If you are using the Perfection 2580 Photo scanner, remove the film jam on the scanner as follows: press the eject button and remove the film jam on the scanner, and then unplug the scanner from the computer. Wait 10 seconds, and then plug the scanner back in. For more details, refer to the <i>Online Reference Guide</i> . Try restarting your computer and unplugging the scanner. Wait 10 seconds, and then plug the scanner back in. If the red light is still flashing, contact your dealer or Epson.
 Off	Make sure your scanner is connected to your computer and plugged into a power source.

If your problem is listed here, try these suggestions.

The New Hardware Wizard appears on your screen.	Click Cancel and follow the steps in "Install the Software" on the other side of this sheet. Disconnect the scanner before installing the software.
The scanner makes a grinding noise when it is plugged into a power source.	Make sure the transportation lock is unlocked (see section 3).
You see an error message when you try to scan, or the scanner does not scan.	Make sure your scanner is connected to your computer and plugged into a power source. Uninstall and then reinstall EPSON Scan.

Use the following sources for more answers:

- Double-click the *Perf2480P_2580P Reference Guide* icon on your desktop. (If you have not installed the reference guide, insert the scanner software CD-ROM in the CD-ROM or DVD drive. From the Custom Installation screen, select **Reference Guide** and then click **Install**.)
- Use the **on-screen Help** for **EPSON Smart Panel** and **EPSON Scan**: Click the **Help** button or the question mark that appears on the screen when you are using these software applications.

Safety Instructions

Read all these instructions and save them for later reference. Follow all warnings and instructions marked on the scanner.

Caution: Be sure the AC power cord meets the relevant local safety standards.

Place the scanner close enough to the computer for the interface cable to reach it easily. Do not place or store the scanner or the AC adapter outdoors, near excessive dirt or dust, water, heat sources, or in locations subject to shocks, vibrations, high temperature or humidity, direct sunlight, strong light sources, or rapid changes in temperature or humidity. Do not use with wet hands.

When connecting this product to a computer or other device with a cable, ensure the correct orientation of the connectors. Each connector has only one correct orientation. Inserting a connector in the wrong orientation may damage both devices connected by the cable.

Place the scanner and the AC adapter near an electrical outlet where the AC power cord can be easily unplugged.

The AC power cord should be placed to avoid abrasions, cuts, fraying, crimping, and kinking. Do not place objects on top of the AC power cord and do not allow the AC adapter or the AC power cord to be stepped on or run over. Be particularly careful to keep all the AC power cord straight at the ends and the points where they enter and leave the AC adapter.

Use only the AC adapter model A291B/E that comes with your scanner. Using any other adapter could cause fire, electrical shock, or injury.

The AC adapter is designed for use with the scanner with which it was included. Do not attempt to use it with other electronic devices unless specified.

Use only the type of power source indicated on the AC adapter's label, and always supply power directly from a standard domestic electrical outlet with the AC power cord that meets the relevant local safety standards.

Avoid using outlets on the same circuit as photocopiers or air control systems that regularly switch on and off.

If you use an extension cord with the scanner, make sure the total ampere rating of the devices plugged into the extension cord does not exceed the cord's ampere rating. Also, make sure the total ampere rating of all devices plugged into the electrical outlet does not exceed the electrical outlet's ampere rating. Do not place multiple loads on the electrical outlet.

Never disassemble, modify, or attempt to repair the AC adapter, AC power cord, scanner, and option by yourself except as specifically explained in the scanner's guides.

Do not insert objects into any opening as they may touch dangerous voltage points or short out parts. Beware of electrical shock hazards.

Unplug the scanner and the AC adapter, and refer servicing to qualified service personnel under the following conditions:

The AC power cord or plug is damaged; liquid has entered the scanner or the AC adapter; the scanner or the AC adapter has been dropped or the case damaged; the scanner or the AC adapter does not operate normally or exhibits a distinct change in performance. (Do not adjust controls that are not covered by the operating instructions.)

Unplug the scanner and the AC adapter before cleaning. Clean with a damp cloth only. Do not use liquid or aerosol cleaners.

If you are not going to use the scanner for a long period, be sure to unplug the AC adapter from the electrical outlet.

For Singapore and Hong Kong users: Replace fuses only with fuses of the correct size and rating.

Caution and Notes:

Caution: must be observed to avoid damage to your equipment.

Note: contain important information and useful tips on the operation of your scanner.

All rights reserved. No part of this publication may be reproduced, stored in a retrieval system, or transmitted in any form or by any means, electronic, mechanical, photocopying, recording, or otherwise, without the prior written permission of Seiko Epson Corporation. The information contained herein is designed only for use with this Epson scanner. Epson is not responsible for any use of this information as applied to other scanners. Neither Seiko Epson Corporation nor its affiliates shall be liable to the purchaser of this product or third parties for damages, losses, costs, or expenses incurred by the purchaser or third parties as a result of: accident, misuse, or abuse of this product or unauthorized modifications, repairs, or alterations to this product, or (excluding the U.S.) failure to strictly comply with Seiko Epson Corporation's operating and maintenance instructions.

Seiko Epson Corporation shall not be liable for any damages or problems arising from the use of any options or any consumable products other than those designated as Original Epson Products or Epson Approved Products by Seiko Epson Corporation. Seiko Epson Corporation shall not be held liable for any damage resulting from electromagnetic interference that occurs from the use of any interface cables other than those designated as Epson Approved Products by Seiko Epson Corporation. EPSON is a registered trademark of Seiko Epson Corporation. Microsoft and Windows are registered trademarks of Microsoft Corporation. Macintosh is a registered trademark of Apple Computer.

General Notice: Other product names used herein are for identification purposes only and may be trademarks of their respective owners. Epson disclaims any and all rights in those marks.

Copyright © 2004 by Seiko Epson Corporation