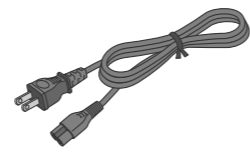
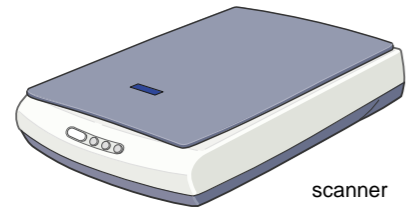
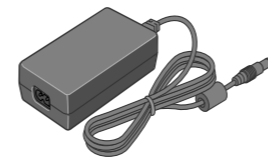


# Unpacking

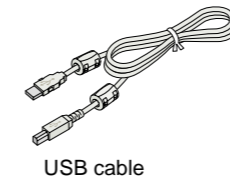
Make sure the following parts are included and not damaged. If you find any missing or damaged items, contact your EPSON dealer immediately.



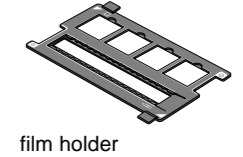
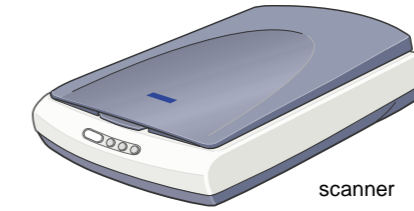
The power cord is designed to match the voltage of the country of purchase.



The AC adapter is designed to match the voltage of the country of purchase.



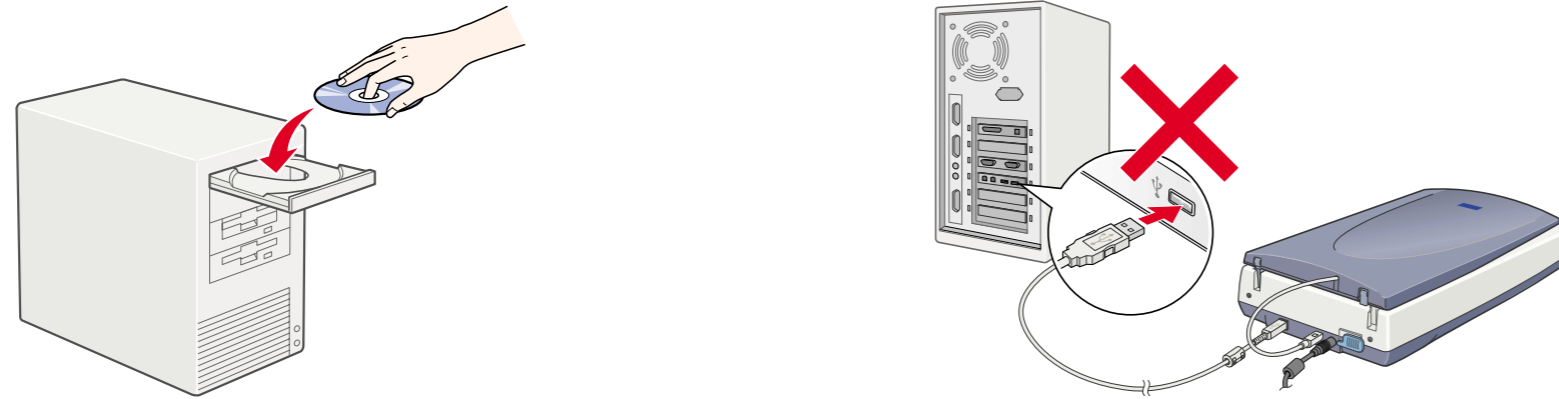
For the Perfection 1650 Photo



Most illustrations shown on this sheet are for the Perfection 1650, so they may be different in appearance from your scanner. The instructions are the same, except as noted.

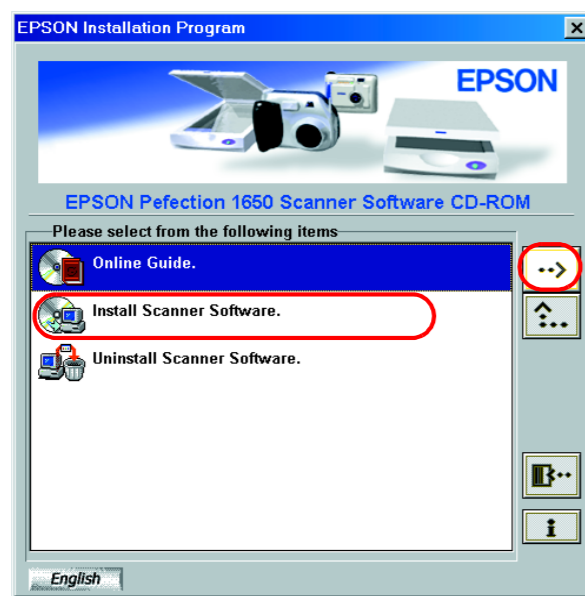
## 1. Installing the Software

Insert the scanner software CD in the CD-ROM drive and install the software BEFORE connecting the scanner to your computer.



### For Windows

1. Insert the scanner software CD in the CD-ROM drive.
2. The EPSON Installation Program dialog box appears. Select your preferred language and click **OK**.
3. Select **Install Scanner Software**, and click **Next**.



**Note:**  
 If the EPSON Installation Program dialog box does not appear, double-click the **My Computer** icon. Click the CD-ROM icon, then select **Open** from the **File** menu. Then double-click **Setup.exe**.

4. Make sure all the software in the list is selected and click **OK**.
5. Then, follow the on-screen instructions until all the software is installed. When a message appears informing you that installation is complete, click **OK**.

### For Perfection 1650 Photo users

To install Adobe® Photoshop® Elements, insert the CD in the CD-ROM drive. Then, follow the on-screen instructions.

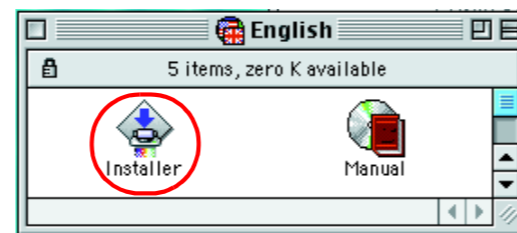
**Note:**  
 If the CD does not launch automatically, double-click the **My Computer** icon on the desktop, double-click the CD-ROM icon, and double-click **Setup.exe** in the Adobe Photoshop Elements folder.

This completes the scanner software installation. Next, set up the scanner as described in “2. Setting up the Scanner.”

Read this side first!

### For Macintosh

1. Insert the scanner software CD in the CD-ROM drive.
  2. Double-click your preferred language icon in the EPSON folder.
- Note:**  
 If the EPSON folder does not appear on your desktop, double-click the EPSON icon on your desktop.
3. Double-click the **Installer** icon.



4. The Installer dialog box appears. Be sure to install all the software in the list.
5. Click **Start** and follow the on-screen instructions.

### For Perfection 1650 Photo users

Follow the steps below to install Adobe Photoshop Elements.

1. Insert the CD in the CD-ROM drive.
2. Double-click the **Install Photoshop Elements** icon in the **Adobe Photoshop Elements** folder in the folder of your preferred language.
3. Then, follow the on-screen instructions to install Photoshop Elements.

This completes the scanner software installation. Next, set up the scanner as described in “2. Setting up the Scanner.”

## Warnings, Cautions, and Notes

**Warning:** Warnings must be followed carefully to avoid bodily injury.

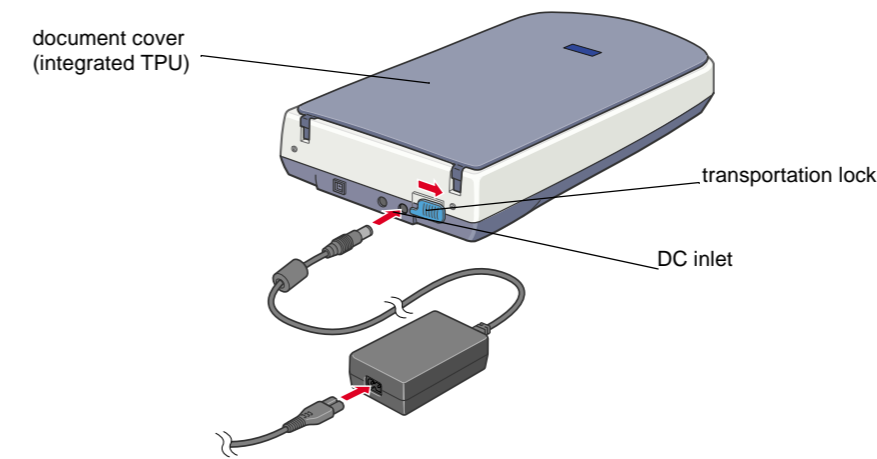
**Caution:** Cautions must be observed to avoid damage to your equipment.

**Notes:** Notes contain important information and useful tips on the operation of your scanner.

## 2. Setting up the Scanner

### 1. Unlock and plug in the scanner

1. Slide the transportation lock to the right and connect the AC adapter as shown below.



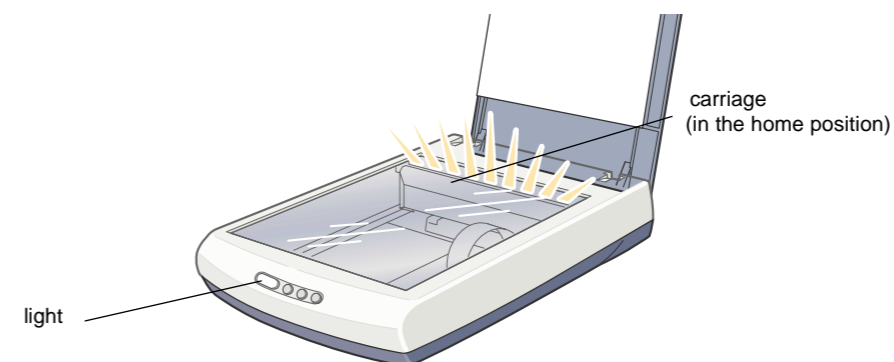
**Note:**  
 If you plan to use the optional Film Adapter or the integrated TPU, install it first.

2. Open the document cover or the integrated TPU (for Perfection 1650 Photo users) so you can see the startup operation.
3. Plug the other end of the power cord into an electrical outlet.

**Caution:**  
 It is not possible to change the AC adapter's input and output voltage. If the label on the AC adapter does not show the correct voltage, contact your dealer. Do not plug in the power cord.

**Note:**  
 This scanner does not have a power button. It turns on when you connect the AC adapter and then plug in the power cord.

4. Make sure the carriage moves slightly and the fluorescent lamp on the carriage turns on.



5. The indicator light stays on in green, meaning the scanner has completed initialization.

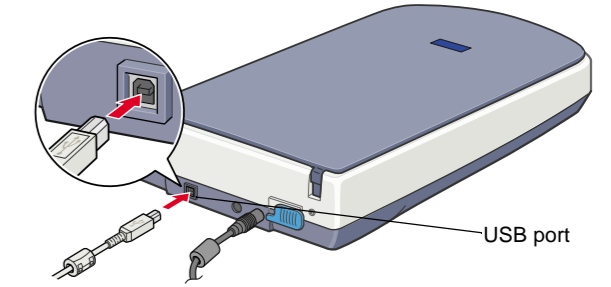
**Caution:**  
 Whenever you unplug the scanner, wait at least 10 seconds before plugging it back in. Rapidly plugging and unplugging the scanner can damage it.

**Note:**  
 The scanner turns off the fluorescent lamp if it does not receive any commands from the computer within 15 minutes.

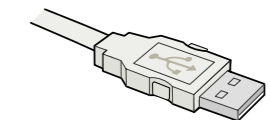
Be sure to unplug the scanner once you have finished using it. The scanner turns off when unplugged.

### 2. Connect the USB cable

1. Connect one end of the USB cable to the scanner's USB port.

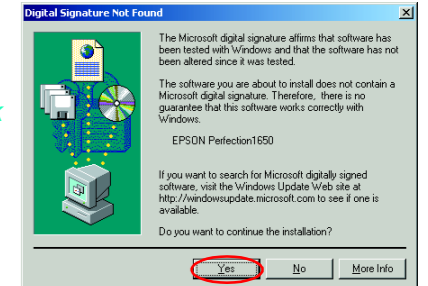


2. Connect the other end of the USB cable to the USB port on your computer.



3. The scanner is recognized automatically. For Windows users, the dialog box appears during the recognition process. Now you are ready to use your scanner.

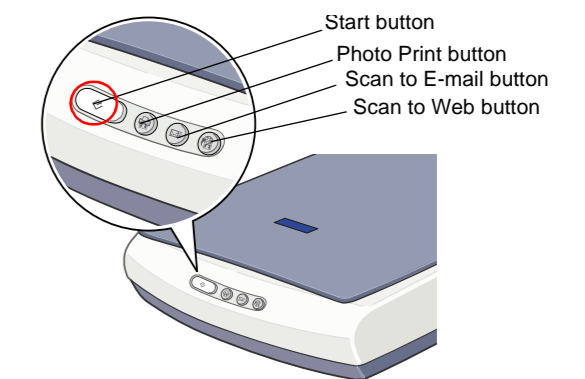
**Note for Windows 2000 users:**  
 When you connect the scanner, the dialog box on the right appears. Click **Yes** to continue.



### 3. Check the installation and setup

Follow these steps to make sure the installation and setup are completed properly, and the scanner operates correctly.

1. Press the **Start** button on the scanner.



2. If the EPSON Smart Panel window appears, your scanner is now set up and ready to use.



**Note:**  
 Depending on your scanner type, the available applications in the window are different.

## Safety Instructions

Read all these instructions and save them for later reference. Follow all warnings and instructions marked on the scanner.

### When using the scanner

- Do not place the scanner or the AC adapter on an unstable surface, near a radiator or heat source.
- Do not use the scanner or the AC adapter near water, in excess humidity, outdoors, or handle either device and the power plug with wet hands.
- Never disassemble, modify, or attempt to repair the AC adapter, power cord, scanner, and option by yourself except as specifically explained in the scanner's guides.
- Do not insert objects into any openings as they may touch dangerous voltage points or short out parts. Beware of electrical shock hazards.
- Unplug the scanner and the AC adapter, and refer servicing to qualified service personnel under the following conditions:
  - If the power cord or plug is damaged;
  - If liquid has entered the scanner or the AC adapter;
  - If the scanner or the AC adapter has been dropped or the case damaged;
  - If the scanner or the AC adapter does not operate normally or exhibits a distinct change in performance. (Do not adjust controls that are not covered by the operating instructions.)
- Unplug the scanner and the AC adapter before cleaning. Clean with a damp cloth only. Do not use liquid or aerosol cleaners.
- If you are not going to use the scanner for a long period, be sure to unplug the AC adapter from the electrical outlet.

### For United Kingdom users

The following safety information applies to the AC adapter.

#### Safety information

**Warning:**  
Refer to the rating plate for the voltage and check that the appliance voltage corresponds to the supply voltage.

**Important:** The wires in the mains lead fitted to this appliance are coloured in accordance with the following code:

Blue — Neutral  
Brown — Live

#### If you have to fit a plug:

As the colours of the mains lead of this appliance may not match the coloured markings used to identify the terminals in a plug, please observe the following:

- The blue wire must be connected to the terminal in the plug marked with the letter **N**.
- The brown wire must be connected to the terminal in the plug marked with the letter **L**.
- If damage occurs to the plug, replace the cord set or consult a qualified electrician.
- Replace fuses only with fuses of the correct size and rating.

### When choosing a place for the scanner

- Place the scanner close enough to the computer for the interface cable to reach it easily.
- Place the scanner and the AC adapter near an electrical outlet where the power cord can be easily unplugged.

**Note for French-speaking users:**  
Installez le scanner et l'adaptateur près d'une prise électrique permettant de débrancher facilement le cordon d'alimentation.

- Allow space behind the scanner for the cables, and space above the scanner so that you can raise the document cover fully.
- Keep the scanner and the AC adapter away from high temperatures, humidity and excessive dirt or dust. Also avoid using or storing the scanner in places subject to rapid changes of temperature and humidity.
- Keep the scanner and the AC adapter away from direct sunlight and strong light sources.
- Avoid places subject to shocks and vibrations.

### When choosing a power source

- Use only the AC adapter model A110B/E or A140B/E that comes with your scanner. Using any other adapter could cause fire, electrical shock, or injury.
- The AC adapter is designed for use with the scanner with which it was included. Do not attempt to use it with other electronic devices unless specified.
- Use only the type of power source indicated on the AC adapter's label, and always supply power directly from a standard domestic electrical outlet with the AC power cord that meets the relevant local safety standards.
- Avoid using outlets on the same circuit as photocopiers or air control systems that regularly switch on and off.
- If you use an extension cord with the scanner, make sure the total ampere rating of the devices plugged into the extension cord does not exceed the cord's ampere rating. Also, make sure the total ampere rating of all devices plugged into the electrical outlet does not exceed the electrical outlet's ampere rating. Do not place multiple loads on the electrical outlet.
- Do not let the power cord become damaged or frayed.
- Power-supply cords should be protected from abrasion, cuts, crimping and kinking. Be sure to place your cords to avoid any damage. Do not place objects on top of the power cord and the AC adapter or allow the power cord to be stepped on or run over. You should take special care to try to keep the power cord straight at the ends and the points where it enters and leaves the transformer.
- If you plan to use the scanner in Germany, observe the following:

To provide adequate short-circuit protection and over-current protection for this scanner, the building installation must be protected by a 10 or 16 amp circuit breaker.

**Note for German-speaking users:**  
Bei Anschluss des Scanner an die Stromversorgung muss sichergestellt werden, dass die Gebäudeinstallation mit einer 10 A- oder 16 A-Sicherung abgesichert ist.

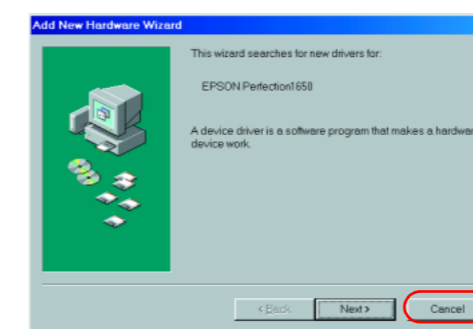
#### For US and Canadian users

- To reduce the risk of fire, use only the included power cord or a 6 to 10 feet long UL-approved type SPT-2 or heavier, 2 x 18 AWG cord with a 125 V 10 A plug and 125 V 7 A connector.
- If your AC Adapter is equipped with a polarized alternating-current line plug (a plug having one blade wider than the other) and a polarized power inlet, you must insert the plug into a power outlet in a specific way. This is a safety feature. If you are unable to insert the plug properly, try reversing the plug. If this fails again, contact an electrician to replace your outlet. Be sure to use only the polarized AC cord which comes with the scanner.

## Troubleshooting

### For Windows

If the Add New Hardware Wizard or the Found New Hardware Wizard dialog box appears, click **Cancel** and follow the steps described on the reverse side. Do not click **Next**.



### Recovering from Scanner Software Installation Problems

If you canceled the scanner software installation before the procedure was completed, or you connected the scanner before installing the software, EPSON TWAIN may be incorrectly installed.

Follow these steps to install the software correctly.

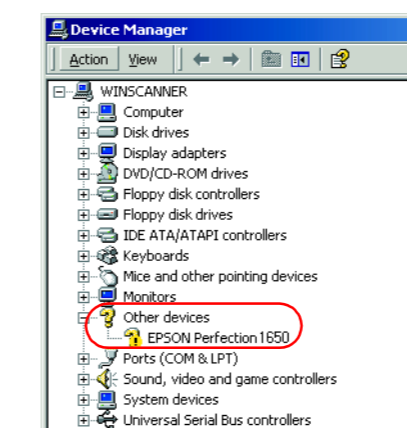
#### For Windows Me, 98 users

1. Disconnect the AC adapter and the USB cable from the scanner.
2. Follow the steps described on the reverse side.

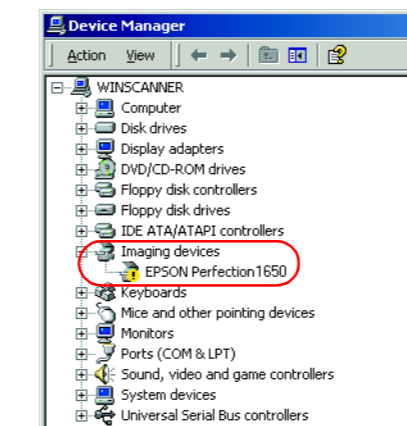
#### For Windows 2000 users

1. Make sure your scanner is plugged in and connected to your computer.
2. Right-click the **My Computer** icon on your desktop, and then click **Properties**.
3. In the System Properties dialog box, select the **Hardware** tab and then click **Device Manager**...
4. Click the plus (+) sign next to Other devices or Imaging devices. If your scanner appears under Other devices with a question (?) mark or under Imaging devices with an exclamation (!) mark, right-click **? EPSON Perfection 1650** or **! EPSON Perfection 1650**, and then select **Uninstall**...

Your scanner appearing under Other devices with a question (?) mark:



Your scanner appearing under Imaging devices with an exclamation (!) mark:



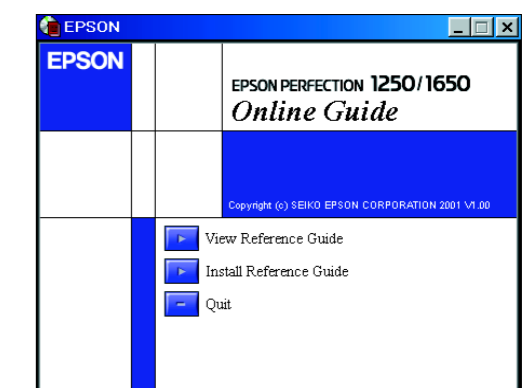
5. The Confirm Device Removal dialog box appears. Click **OK**.
6. Shut down your computer and unplug your scanner. Then disconnect your scanner from your computer.
7. Follow the steps described on the reverse side.

## Getting Information from the Online Reference Guide

To learn more about your scanner, see the *Online Reference Guide* which includes detailed information on scanning and troubleshooting.

**Note:**  
A Web browser must be installed on your computer to view the *Online Reference Guide*.

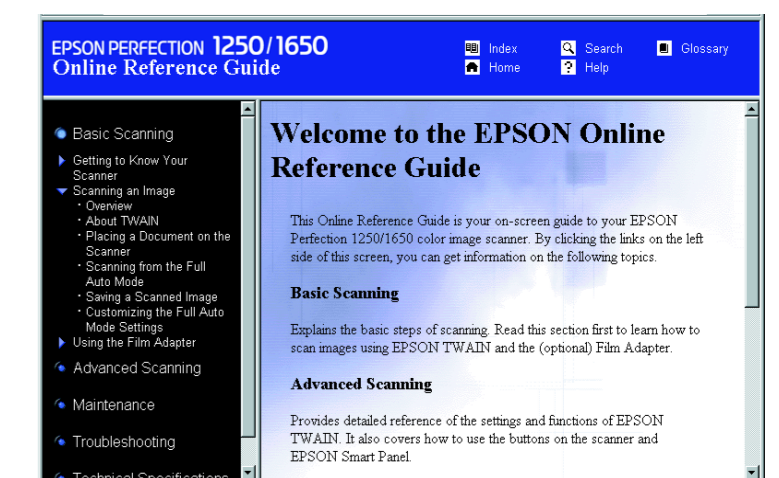
1. Insert the scanner software CD in your CD-ROM drive.
2. **For Windows users:**  
Select your preferred language in the EPSON Installation Program dialog box and click **[>]**. Select **Online Guide** and click **[>]**.
- For Macintosh users:**  
Double-click your preferred language icon, and then double-click the **Manual** icon. Finally, double-click the **Online Guide** icon.
3. The online guide menu appears.



4. For viewing the *Online Reference Guide*, click **View Reference Guide**. For installing the guide, click **Install Reference Guide** and follow the on-screen instructions.

**Note:**  
If your hard disk does not have enough space for installing the *Online Reference Guide*, view it directly from the CD.

5. When the *Online Reference Guide* opens, use the table of contents in the guide to access all topics in the guide. Click a main entry (and a sub entry) to view topics under the entry, and click a topic to go to that page. Click **Help** to get information on how to use the guide.



All rights reserved. No part of this publication may be reproduced, stored in a retrieval system, or transmitted in any form or by any means, electronic, mechanical, photocopying, recording, or otherwise, without the prior written permission of SEIKO EPSON CORPORATION. No patent liability is assumed with respect to the use of the information contained herein. Neither is any liability assumed for damages resulting from the use of the information contained herein.

Neither SEIKO EPSON CORPORATION nor its affiliates shall be liable to the purchaser of this product or third parties for damages, losses, costs, or expenses incurred by purchaser or third parties as a result of: accident, misuse, or abuse of this product or unauthorized modifications, repairs, or alterations to this product.

SEIKO EPSON CORPORATION and its affiliates shall not be liable against any damages or problems arising from the use of any options or any consumable products other than those designated as Original EPSON Products or EPSON Approved Products by SEIKO EPSON CORPORATION.

EPSON is a registered trademark of SEIKO EPSON CORPORATION. Macintosh is a registered trademark of Apple Computer, Inc. Microsoft and Windows are registered trademarks of Microsoft Corporation in the United States of America and other countries. Adobe and Photoshop are registered trademarks of Adobe Systems Incorporated.

**General Notice:** Other product names used herein are for identification purposes only and may be trademarks of their respective owners. EPSON disclaims any and all rights in those marks.