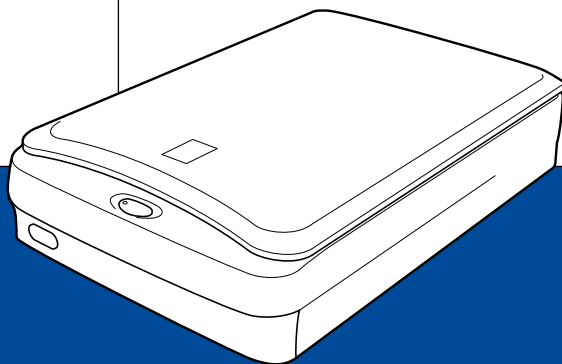


# EPSON

Color Image Scanner



EPSON PERFECTION™ **1640SU**

EPSON PERFECTION™ **1640SU PHOTO**

EPSON PERFECTION™ **1640SU OFFICE**


## *Startup Guide*

# Where to Find Information

## ***Startup Guide (this document)***

Describes how to set up and use the scanner. Basic scanning operations are covered. It also explains how to install and configure the EPSON scanner software.

## ***Online Reference Guide***

Provides basic information about scanning and detailed reference on settings and functions of EPSON TWAIN and other EPSON scanner utility software. It also covers use of the  Start button and the option, and includes information on how to calibrate your system, maintenance and troubleshooting tips, technical specifications and customer support information. See “Getting Information from Online Guide” on page 3-11 in this *Startup Guide* to learn how to open the online guide.

## ***Online Color Guide (may not be available in some countries)***

Explains the basics of color imaging and how to get impressive results from your scanner and other EPSON products.

## ***Information on EPSON Scanner Software (online help)***

Provides you with detailed information on EPSON TWAIN. You can access the online help from the EPSON Scanner folder, or click the Help button in the EPSON TWAIN dialog box.

## ***Information on other Software***

Refer to the respective documentation for the information.

# EPSON®

EPSON PERFECTION™ 1640SU

EPSON PERFECTION™ 1640SU PHOTO

EPSON PERFECTION™ 1640SU OFFICE

Color Image Scanner

All rights reserved. No part of this publication may be reproduced, stored in a retrieval system, or transmitted in any form or by any means, electronic, mechanical, photocopying, recording, or otherwise, without the prior written permission of SEIKO EPSON CORPORATION. No patent liability is assumed with respect to the use of the information contained herein. Neither is any liability assumed for damages resulting from the use of the information contained herein.

Neither SEIKO EPSON CORPORATION nor its affiliates shall be liable to the purchaser of this product or third parties for damages, losses, costs, or expenses incurred by purchaser or third parties as a result of: accident, misuse, or abuse of this product or unauthorized modifications, repairs, or alterations to this product.

SEIKO EPSON CORPORATION and its affiliates shall not be liable against any damages or problems arising from the use of any options or any consumable products other than those designated as Original EPSON Products or EPSON Approved Products by SEIKO EPSON CORPORATION.

EPSON is a registered trademark of SEIKO EPSON CORPORATION.

IBM and PS/2 are registered trademarks of International Business Machines Corporation. Apple, Macintosh, Mac, iMac, and Power Macintosh are registered trademarks of Apple Computer, Inc.

Microsoft and Windows are registered trademarks of Microsoft Corporation in the United States of America and other countries.

Adobe, PhotoDeluxe and Acrobat Reader are registered trademarks of Adobe Systems Incorporated.

*General Notice: Other product names used herein are for identification purposes only and may be trademarks of their respective companies.*

Copyright © 2000 by SEIKO EPSON CORPORATION, Nagano, Japan.



Printed on Recycled Paper.

## Startup Guide

---



---

# Contents

## ***Safety Instructions***

---

Important Safety Instructions . . . . .	1
Warnings, Cautions, and Notes. . . . .	2
ENERGY STAR Compliance . . . . .	3
For United Kingdom Users . . . . .	4
Safety information . . . . .	4

## ***Chapter 1 Setting up the Scanner***

---

Unpacking the Scanner. . . . .	1-2
Getting to Know Your Scanner . . . . .	1-5
Options . . . . .	1-6
Choosing a Place for the Scanner . . . . .	1-7
Initializing the Scanner . . . . .	1-9
Connecting the Scanner (SCSI) to Your Computer. . . . .	1-11
Power-on/off sequence . . . . .	1-14
Connecting the Scanner (USB) to Your Computer. . . . .	1-15

## ***Chapter 2 Installing the Software***

---

Installing the Scanner Software for Windows. . . . .	2-2
For Windows 98 and Windows 2000 users. . . . .	2-2
For Windows 95 and Windows NT 4.0 users (For SCSI users) . . . . .	2-7
Installing the Scanner Software for Macintosh . . . . .	2-13
Calibrating Your Screen . . . . .	2-15

## **Chapter 3 Using Your Scanner**

---

Scanning an Image . . . . .	3-2
Scanning by using the Start button . . . . .	3-5
Scanning with a TWAIN-compliant application . . . . .	3-8
Getting Information from Online Guide . . . . .	3-11
Opening the Online Guide . . . . .	3-12

---

# ***Safety Instructions***

---

## ***Important Safety Instructions***

Read all these instructions and save them for later reference. Follow all warnings and instructions marked on the scanner.

- ❑ Unplug the scanner before cleaning. Clean with a damp cloth only. Do not spill liquid on the scanner.
- ❑ Do not place the scanner on an unstable surface, or near a radiator or heat source.
- ❑ Use only the type of power source indicated on the scanner's label.
- ❑ Connect all equipment to properly grounded power outlets. Avoid using outlets on the same circuit as photocopiers or air control systems that regularly switch on and off.
- ❑ Do not let the power cord become damaged or frayed.
- ❑ If you use an extension cord with the scanner, make sure the total ampere rating of the devices plugged into the extension cord does not exceed the cord's ampere rating. Also, make sure the total ampere rating of all devices plugged into the wall outlet does not exceed the wall outlet's ampere rating.
- ❑ Except as specifically explained in this *Startup Guide*, do not attempt to service the scanner yourself.

- ❑ Unplug the scanner and refer servicing to qualified service personnel under the following conditions:

If the power cord or plug is damaged; if liquid has entered the scanner; if the scanner has been dropped or the case damaged; if the scanner does not operate normally or exhibits a distinct change in performance. (Do not adjust controls that are not covered by the operating instructions.)

- ❑ If you plan to use the scanner in Germany, observe the following:

To provide adequate short-circuit protection and over-current protection for this scanner, the building installation must be protected by a 10 or 16 amp circuit breaker.

***Note for German-speaking users:***

*Bei Anschluss des Scanner an die Stromversorgung muss sichergestellt werden, dass die Gebäudeinstallation mit einer 10 A- oder 16 A-Sicherung abgesichert ist.*

---

## **Warnings, Cautions, and Notes**



*Warnings must be followed carefully to avoid bodily injury.*



*Cautions must be observed to avoid damage to your equipment.*

*Notes contain important information and useful tips on the operation of your scanner.*



---

## **ENERGY STAR Compliance**



As an ENERGY STAR Partner, EPSON has determined that this product meets the ENERGY STAR guidelines for energy efficiency.

The International ENERGY STAR Office Equipment Program is a voluntary partnership with the computer and office equipment industry to promote the introduction of energy-efficient personal computers, monitors, printers, fax machines, copiers, and scanners, in an effort to reduce air pollution caused by power generation.

---

## For United Kingdom Users

### Safety information



**Warning:**

*This appliance must be earthed. Refer to the rating plate for voltage and check that the appliance voltage corresponds to the supply voltage.*

**Important:**

*The wires in the mains lead fitted to this appliance are coloured in accordance with the following code:*

*Green and yellow — Earth*

*Blue — Neutral*

*Brown — Live*

As the colours of the wires in the mains lead of this appliance may not correspond with the coloured markings identifying the terminals in your plug, proceed as follows:

The green and yellow wire must be connected to the terminal in the plug which is marked with the letter E or with the earth symbol ( $\perp$ ).

The blue wire must be connected to the terminal in the plug marked with the letter N.

The brown wire must be connected to the terminal in the plug marked with the letter L.

If damage occurs to the plug, replace the cord set or consult a qualified electrician.

Replace fuses only with a fuse of the correct size and rating.

Unpacking the Scanner . . . . . 1-2

Getting to Know Your Scanner . . . . . 1-5

Options . . . . . 1-6

Choosing a Place for the Scanner . . . . . 1-7

Initializing the Scanner . . . . . 1-9

Connecting the Scanner (SCSI) to Your Computer . . . . . 1-11

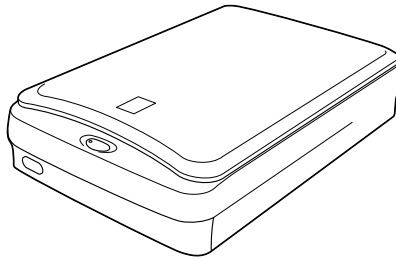
    Power-on/off sequence . . . . . 1-14

Connecting the Scanner (USB) to Your Computer . . . . . 1-15

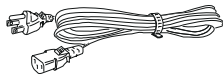
---

## Unpacking the Scanner

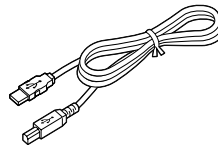
When you unpack your EPSON Perfection 1640SU/ Perfection 1640SU Photo/Perfection 1640SU Office, make sure the following parts are included and not damaged. If you find any missing or damaged items, contact your EPSON dealer immediately. (Your Perfection 1640SU/ Perfection 1640SU Photo/Perfection 1640SU Office also comes shipped with CD-ROMs which contain the driver software to run your scanner, along with other items necessary to use the scanner.)



scanner



power cord



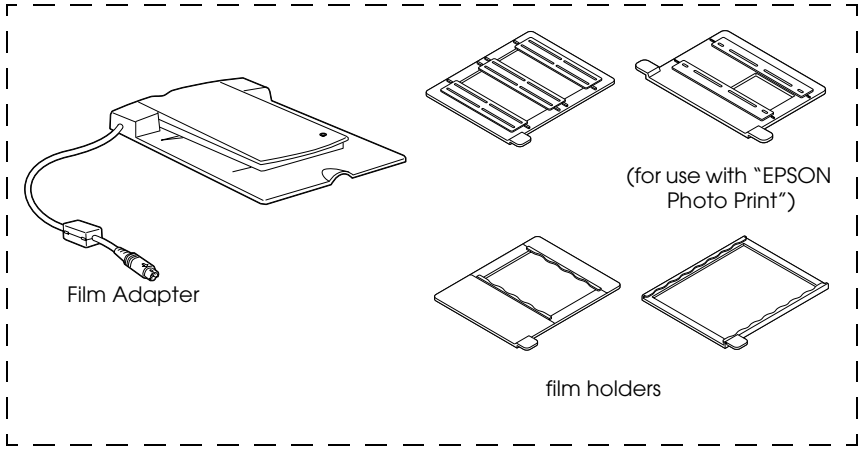
USB interface cable

Depending on the country of purchase, the power cord may come attached to the scanner. The shape of the AC plug also varies, so make sure the plug included is the correct shape for the electrical outlet in your country.

***Note for Perfection 1640SU Office users:***

*The Automatic Document Feeder is already installed on your scanner; however, the document cover is not included.*

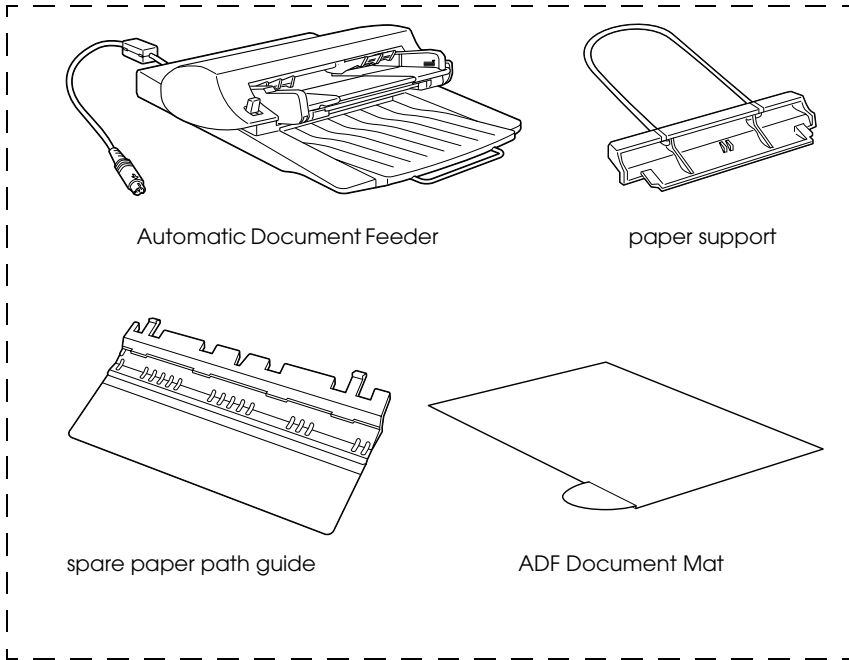
*For the Perfection 1640SU Photo*



**Note:**

*The Perfection 1640SU Photo comes with the Film Adapter which is also available as an option for the Perfection 1640SU/Perfection 1640SU Office. See "Options" in your Online Reference Guide for details.*

*For the Perfection 1640SU Office*

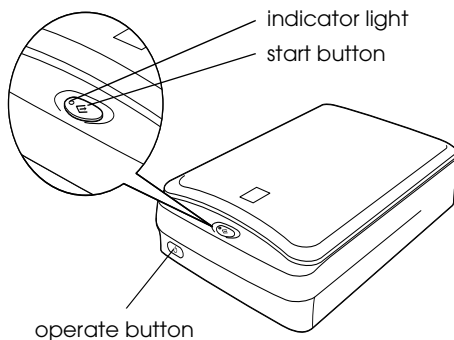


**Note:**

- ❑ *The Perfection 1640SU Office comes with the Automatic Document Feeder which is also available as an option for the Perfection 1640SU/Perfection 1640SU Photo. See “Options” in your Online Reference Guide for details.*
  
- ❑ *The Automatic Document Feeder is already installed on your scanner; however, the document cover is not included. Most illustrations shown in this Startup Guide are for the Perfection 1640SU/Perfection 1640SU Photo, so they may be different in appearance from your Perfection 1640SU Office; however, the instructions are the same except when noted.*

## Getting to Know Your Scanner

The scanner has one indicator light and two buttons.





### Light

Pattern	Color	Scanner Status
◌ (Flashing slowly)	Green	Initializing or busy scanning.
○	Green	Ready to scan images.
◌/◌ (On, or flashing rapidly)	Red	An error has occurred. See "Maintenance and Troubleshooting" in your Online Reference Guide for more information.
●	N/A	The scanner is turned off.

○ = on, ● = off, ◌ = flashing

## Buttons

Button	Function
 Operate	Turns the scanner on and off.
 Start	Scans and sends the captured image to an assigned application in a single step. Before using this feature, make sure you have installed EPSON TWAIN and EPSON SMART PANEL for Scanner. See your Online Reference Guide for more details.

---

## Options

The following optional items are available to expand the versatility of your scanner. For detailed information on the use of these options, see “Options” in your *Online Reference Guide*.

### **Automatic Document Feeder (B81322\*)**

Designed primarily for Optional Character Recognition (OCR) scanning, the Automatic Document Feeder allows you to scan up to 30 pages automatically, then use them in word processing programs, as if you had typed the text yourself.

### **Film Adapter (B81317\*)**

Allows you to scan transparent materials; primarily 35 mm slides and filmstrips. The Film Adapter’s reading area allows you to scan film up to 4 × 5 inches in size.

#### **Note:**

*The asterisk is a substitute for the last digit of the product number, which varies by country.*



---

## Choosing a Place for the Scanner

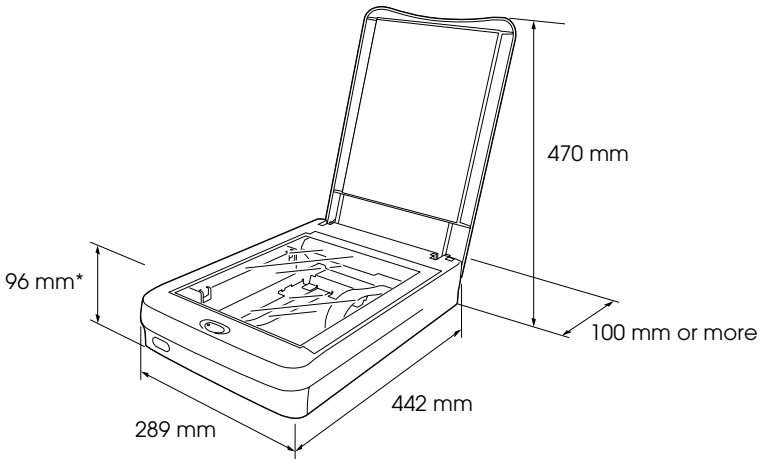
Follow the guidelines below when selecting a location for your scanner:

- ❑ Place the scanner close enough to the computer for the interface cable to reach it easily.
- ❑ Place the scanner near a wall outlet where the power cord can be easily unplugged.

***Note for French-speaking users:***

*Placez le scanner près d'une prise de courant où la fiche peut-être débranchée facilement.*

- ❑ Allow space behind the scanner for the cables, and space above the scanner so that you can raise the document cover fully.



\* When document cover is closed.

***Note for Perfection 1640SU Office users:***

*See "Technical Specifications" in your Online Reference Guide for the detailed dimensions of the Automatic Document Feeder.*

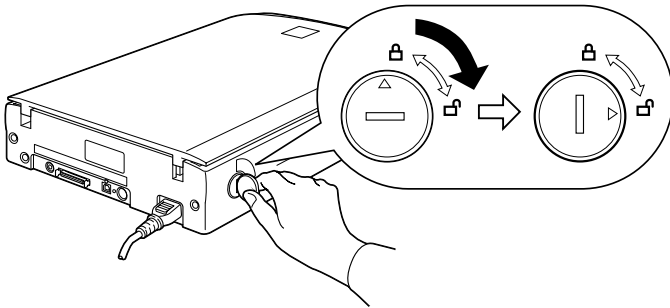
- Keep the scanner away from high temperatures, humidity and excessive dirt or dust. Also avoid using or storing the scanner in places subject to rapid changes of temperature and humidity.
- Keep the scanner away from direct sunlight and strong light sources.
- Avoid places subject to shocks and vibrations.

---

## Initializing the Scanner

Before connecting the scanner to your computer, follow the steps below to make sure that the scanner is operating properly.

1. Place the scanner on a flat, stable surface.
2. Turn the transportation lock on the right side to the unlocked position using a coin or similar object, as shown below.



**Note:**

*Return the transportation lock to the locked position when transporting the scanner.*


3. If the power cord is not attached to the scanner, connect it to the AC inlet on the back of the scanner and plug the other end into a properly grounded electrical outlet.

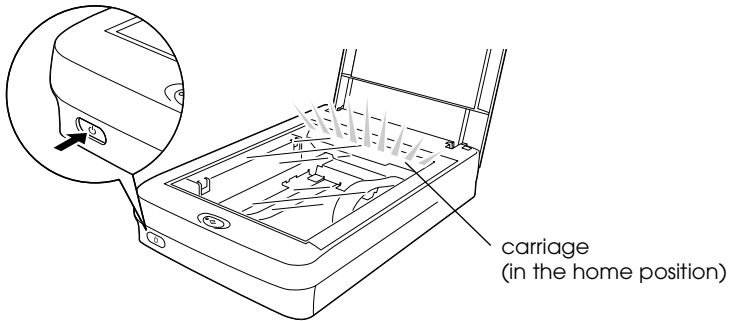


**Caution:**

*It is not possible to change the scanner's voltage. If the label on the back of the scanner does not show the correct voltage for your country, contact your dealer. Do not plug in the power cord.*

4. Open the document cover so you can see the operation of the scanner during initialization (startup).

5. Turn on the scanner by pressing the  Operate button. The indicator light starts flashing.
6. Make sure the carriage moves slightly and the fluorescent lamp on the carriage turns on.



7. The indicator light stays on in green, meaning the scanner has completed initialization.
8. Turn off the scanner.

If the scanner does not work as described, make sure the power cord is firmly plugged in and that you have released the transportation lock, then try again.

**Note:**

*The scanner turns off the fluorescent lamp if it does not receive any commands from the computer within 15 minutes.*



**Caution:**

*Whenever you turn off the scanner, wait at least 10 seconds before plugging it back in. Rapidly plugging and unplugging the scanner can damage the scanner.*

---

# Connecting the Scanner (SCSI) to Your Computer

Before you connect the scanner to your computer using the SCSI interface, read the following sections to determine your systems.

## **SCSI Board**

### For PC users:

You need to install the board and SCSI driver software if you have not done so. Check your system documentation to see whether the driver is included with your operating system already, or if necessary use the documentation included with the board and SCSI driver software for installation instructions.

### For Macintosh users:

Your Macintosh may or may not have SCSI ports, depending on which model you own. Check your system documentation whether you need to install the SCSI board and driver

## **Daisy Chain**

The SCSI interface allows you to connect up to seven devices (such as scanner, hard disk, CD-ROM, and so on) to the computer, in what is called a “daisy chain” arrangement. Only the first SCSI device in a daisy chain is connected to the computer; each of the other devices is connected to another SCSI device.

## **SCSI Cables**

You may need to purchase SCSI cables before setting up your SCSI daisy chain. Be sure the SCSI cable connectors are suitable for your hardware, depending on the maker of your SCSI device and SCSI interface board.

## **SCSI ID number**

Each device has a SCSI ID number. The scanner's default SCSI ID number is 2. See "Changing the SCSI ID Number or SCSI Board" in your *Online Reference Guide* to learn how to change the SCSI ID number.

## **Terminator**

The scanner has a built-in internal terminator (always ON), which allows SCSI devices to communicate properly with each other. Make sure the scanner is the last device in the daisy chain and the other devices in the daisy chain are terminated properly.

Connect the scanner to your computer or to another SCSI device as follows:

### **Note:**

*The combination of connectors on the SCSI interface cable you need varies depending on the maker of your SCSI device and SCSI interface board.*

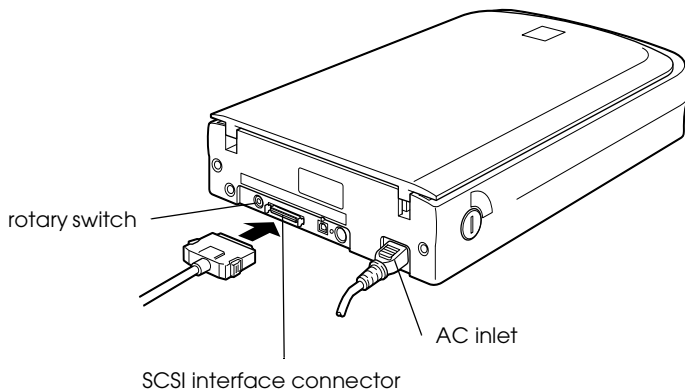
1. Make sure the scanner, computer, and all other SCSI devices are turned off and unplugged from the power source.



### **Caution:**

*Do not connect the scanner to the computer or other devices while they are turned on as damage may occur.*

2. Connect one end of the interface cable to the scanner SCSI connector until the locks on both sides snap in.



**Note:**

- To connect the scanner to a PC using SCSI-2, the length of the cable must not exceed 3 meters.
  - Make sure no other interface is used.
3. Connect the other end of the cable to the SCSI port of your computer or another SCSI device.

**Note:**

*The SCSI port on the Macintosh is the larger port with the SCSI icon over it.*

4. Plug in the power cords of your computer, scanner, and other external SCSI devices.

**Note:**

*Before turning on your system, be sure to read "Power-on/off sequence" following.*

## ***Power-on/off sequence***

Keep the following in mind every time you turn on your computer and SCSI devices, including the scanner.

- ❑ When turning on SCSI devices in a daisy chain as well as your computer, always start from the SCSI device farthest away from the computer. Turn them on one by one in sequence until you reach the computer which should be the last one to turn on. (If you turn on a SCSI device after the computer, the SCSI or the computer may not work properly.) Similarly, when you want to turn off the system, start from your computer and end with the SCSI device farthest away from the computer.
- ❑ Do not turn the scanner off and back on while using your computer, otherwise the scanner may not work properly.
- ❑ **For Windows 95, 98 or 2000 users:**  
The first time you turn on the computer after turning on the scanner, the “Add New Hardware Wizard” dialog box appears to prompt you to install the scanner driver. Follow the instructions in Chapter 2, “Installing the Software,” to install the scanner driver.



---

## Connecting the Scanner (USB) to Your Computer

Make sure that your system meets the requirements. (See “Technical Specifications” in your *Online Reference Guide* for details.) Then connect the scanner to your computer or USB hub as follows:

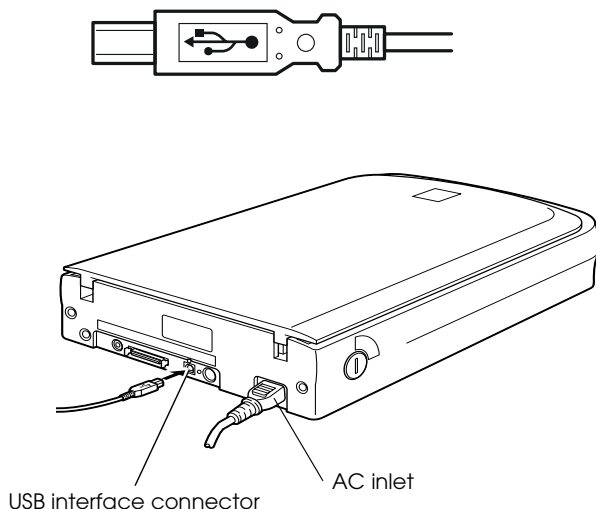
**Note for Macintosh users:**

*Be sure to install the scanner software before connecting the scanner to your computer. See Chapter 2, “Installing the Software,” for details.*

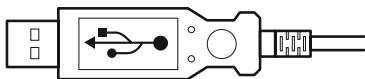
**Note:**

*If you connect the scanner through more than one hub, your system may not work properly. In this case, try connecting the scanner directly to the computer’s USB port. Also, your system may not work properly if you use a USB cable other than that supplied by EPSON.*

1. Connect one end of the cable (Type B) to the USB port on the back of the scanner.



2. Connect the other end of the cable (Type A) to the USB port on your computer, or USB hub.



**Note:**

- ❑ *USB cables enable you to connect the scanner whether your computer is on or off. If you connect the scanner while your computer is on, the “Add New Hardware Wizard” dialog box (for Windows) or a message (for Macintosh) appears to prompt you to install the scanner driver. Follow the instructions in Chapter 2 to install the scanner driver.*
- ❑ *Connect the USB cable to your computer, then install or start the scanner software. Do not connect or disconnect the USB cable while the scanner software is running.*
- ❑ *Make sure no other interface is used.*

**Note for Macintosh users:**

*If you connect the scanner while your Macintosh® is on, a message appears telling you that the scanner driver needs to be installed (Mac OS® 8.X), or a message appears to prompt you to download the scanner driver from the Internet (Mac OS 9). When this happens, click OK (Mac OS 8.X) or Cancel (Mac OS 9) and then insert the EPSON Scanner Software CD in the CD-ROM drive. Then follow the instructions in Chapter 2 to install the scanner software.*

## Chapter 2

---

# ***Installing the Software***

Installing the Scanner Software for Windows. . . . .	2-2
For Windows 98 and Windows 2000 users. . . . .	2-2
For Windows 95 and Windows NT 4.0 users (For SCSI users) . . . . .	2-7
Installing the Scanner Software for Macintosh . . . . .	2-13
Calibrating Your Screen . . . . .	2-15

---

## ***Installing the Scanner Software for Windows***

After connecting the scanner to your computer, install the scanner software (EPSON TWAIN) from the CD-ROM.

For Windows 98 and 2000 users, see the instructions in the section below on this page. For Windows 95 and NT 4.0 users, see “For Windows 95 and Windows NT 4.0 users (For SCSI users)” on page 2-7.

### ***For Windows 98 and Windows 2000 users***

***Note:***

- If the scanner software is already installed and you are upgrading your system to Windows® 2000, be sure to uninstall it before the upgrade, and then re-install it using the same steps described in this section. For more information, see “Maintenance and Troubleshooting” in your Online Reference Guide.*
  - Screen displays of Windows 98 are used to represent all versions of Windows unless differences in operating procedure arise, in such cases the specific Windows version such as “Windows 98” or “Windows 2000” is identified.*
1. Make sure that the scanner is turned on.
  2. Turn on the computer, and start Windows.
  3. When the Add New Hardware Wizard dialog box appears, insert the scanner software CD in the CD-ROM drive, then click Next.

4. Select the Search for the best driver for your device option (for Windows 98) or the Search for a suitable drive for my device option (for Windows 2000), then click Next.



5. Make sure only the Specify a location check box is selected, then proceed to step 6 (for Windows 98 users) or click Next (for Windows 2000 users) before proceeding to step 6.
6. Browse and select or type in the CD-ROM drive letter, the EPSON folder, the folder of your preferred language, and the Win98 (for Windows 98 users) or Win2000 (for Windows 2000 users) folder as the location, as shown below. Finally, click Next (OK).



Windows 98

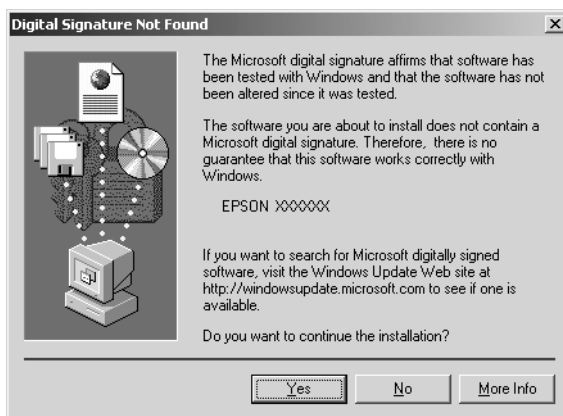


Windows 2000

7. Follow the instructions on the screen.

**For Windows 2000 users:**

When the following dialog box appears, click **Yes** to continue.



**Note:**

*If you click **No** and stop installation, your scanner will appear under **Other Devices** with a question (?) mark in the **Device Manager** menu. You must reinstall **EPSON TWAIN**. Follow the instructions on “**Maintenance and Troubleshooting**” in your **Online Reference Guide**.*

8. The EPSON Screen Calibration utility automatically starts. Follow the instructions on the screen. For details, see “Calibrating Your Screen” on page 2-15.

**Note:**

*If the EPSON Screen Calibration utility does not start automatically, see your Online Reference Guide to calibrate your screen after installing the scanner software.*

9. When a dialog box similar to the one shown below appears, click Finish.



**Note:**

*If necessary, restart your computer.*

This completes the EPSON TWAIN installation. You can now continue and install the utility and applications from the scanner software CD.

## Installing the application software for Windows

1. Double-click the My Computer icon.
2. Double-click the CD-ROM drive icon. A dialog box asking for your preferred language appears. If no dialog box appears, double-click the Cdsetup.exe icon.
3. Select your preferred language and click OK.
4. When the following dialog box appears, click Add Software.



5. From the list of applications, select those you want to install. Make sure EPSON SMART PANEL for Scanner is selected for installation.

**Note:**

*If Adobe® Acrobat® Reader is not installed on your computer, make sure the Acrobat Reader is selected for installation.*

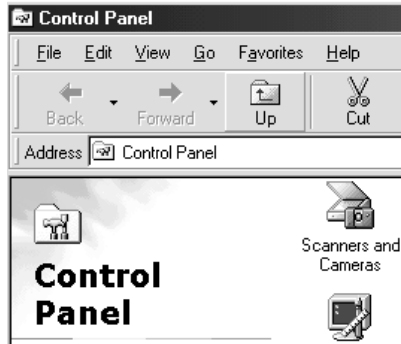
6. Click OK, then follow the instructions on the screen.

The setup program installs the selected applications.



**Note:**

- ❑ *If you see README files in the application folders on the CD-ROM, be sure to read them as they contain up-to-date information on the applications.*
- ❑ *The Scanners and Cameras icon appears in Control Panel as shown below, after EPSON TWAIN is installed.*



### ***For Windows 95 and Windows NT 4.0 users (For SCSI users)***

1. Make sure that the scanner is turned on.
2. Turn on the computer, and start Windows.

If you are using Windows NT<sup>®</sup> 4.0, insert the scanner software CD in the CD-ROM drive. Go to step 3.

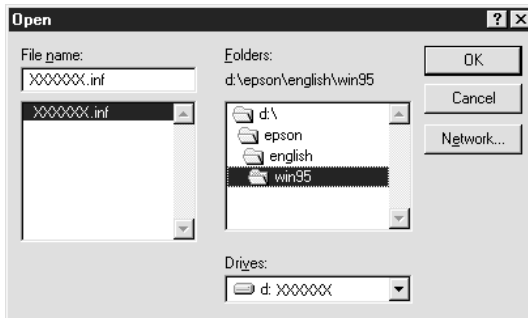
If you are using Windows 95, one of the following dialog boxes will appear.

- ❑ If the dialog box below appears, insert the scanner software CD in the CD-ROM drive.



Select Driver from disk provided by hardware manufacturer, then click OK, and Browse.

Select the CD-ROM drive, EPSON folder, the folder of your preferred language, and Win95 folder, then click OK. Go to step 3.



- ❑ If the dialog box below appears, insert the scanner software CD in the CD-ROM drive, then click Next.



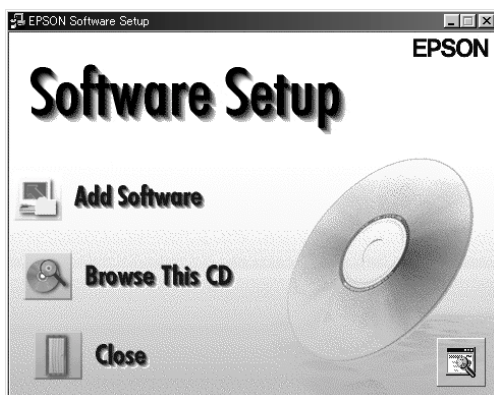
When you are asked for the drive and folder, select the CD-ROM drive, EPSON folder, your language preference, and Win95 folder. An example is shown below.



When the following dialog box or similar appears, click Finish and go to step 3.



3. Double-click the My Computer icon.
4. Double-click the CD-ROM drive icon. A dialog box asking for your preferred language appears on your monitor. If no dialog box appears, double-click the Cdsetup.exe icon.
5. Select your preferred language and click OK.
6. You will see the following dialog box. Click Add Software.



- From the list of applications, select those you want to install. Make sure EPSON TWAIN and EPSON SMART PANEL for Scanner are selected for installation.

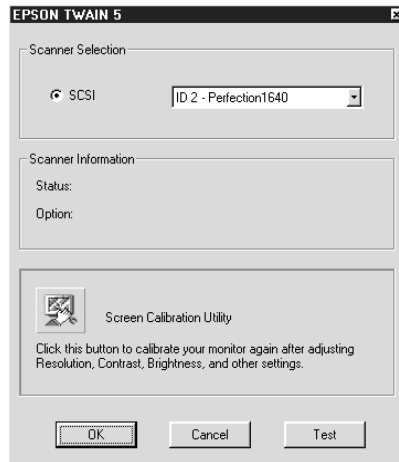
**Note:**

*If Adobe Acrobat Reader is not installed on your computer, make sure the Acrobat Reader is selected for installation.*

- Click OK. Then follow the instructions on the screen.

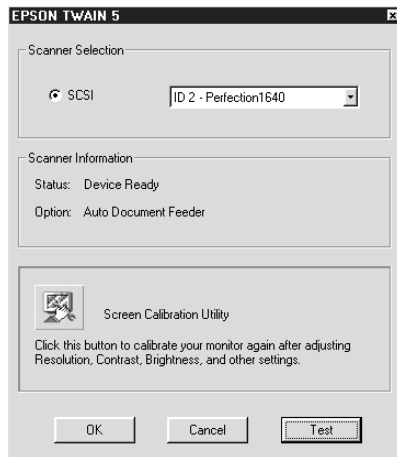
The setup program installs the selected applications.

- After EPSON TWAIN is installed, the EPSON TWAIN 5 dialog box appears.



- Make sure that SCSI is selected and your EPSON scanner appears in the Scanner Selection list. If not, see “Maintenance and Troubleshooting” in your *Online Reference Guide*.

11. Click **Test** to check the connection. If everything is properly installed and connected, **Status: Device Ready** appears under **Scanner Information** in the dialog box.



If the “Device Ready” message does not appear, see “Maintenance and Troubleshooting” in your *Online Reference Guide*.

12. Click **OK** to close the EPSON TWAIN 5 dialog box.

The EPSON Screen Calibration utility automatically starts. Follow the instructions on the screen. For details, see “Calibrating Your Screen” on page 2-15.

---

## Installing the Scanner Software for Macintosh

2

Before connecting the scanner to your Macintosh computer, install the EPSON scanner software (EPSON TWAIN, EPSON SMART PANEL for Scanner, etc.) from the CD-ROM, as follows:

1. Turn on the computer.

**Note for Macintosh users:**

*If you connect the scanner while your Macintosh is on, a message appears telling you that the scanner driver needs to be installed (Mac OS 8.X), or a message appears to prompt you to download the scanner driver from the Internet (Mac OS 9). When this happens, click OK (Mac OS 8.X) or Cancel (Mac OS 9). Then follow the instructions below to install the scanner software.*

2. Insert the CD in the CD-ROM drive.
3. Double-click the EPSON TWAIN folder.

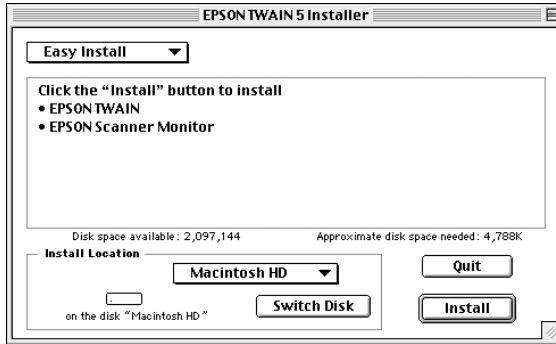
The EPSON TWAIN folder contains multiple-language versions of the software. Double-click the folder of your preferred language.

4. Double-click the EPSON TWAIN 5 Installer icon.



EPSON TWAIN 5 Installer

5. When a dialog box appears, click **Install** and then follow the instructions on the screen.



When you complete the installation, the EPSON Screen Calibration utility automatically starts. Follow the instructions on “Calibrating Your Screen” on page 2-15, and then restart the computer and continue from step 6 below to install other applications.

6. Double-click the folder which contains the applications you want to install.

The Software folder contains multiple-language versions of the applications. Double-click the folder of your preferred language.

**Note:**

- ❑ *Be sure to install EPSON SMART PANEL for Scanner.*
  - ❑ *If Adobe Acrobat Reader is not installed on your computer, install it.*
7. Double-click the installer icon to start the installation program. Then follow the instructions on the screen.
  8. After installing the software, connect the scanner to your computer as described in Chapter 1.



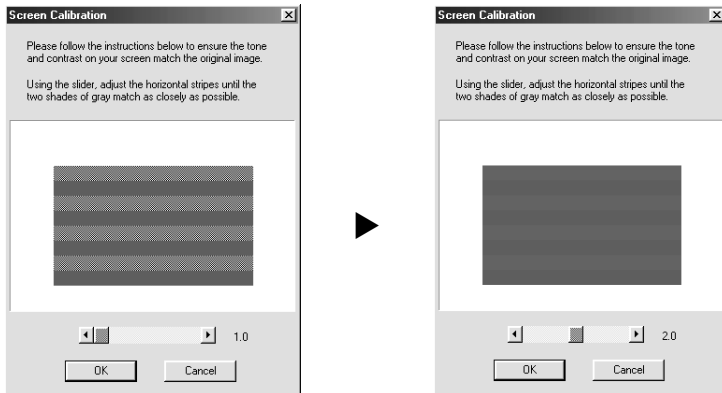
---

## Calibrating Your Screen

To calibrate your screen follow the steps below:

1. Look at the screen and move the slider right or left until the two shades of the gray horizontal stripes match.

2



**Note:**

*View the screen from a short distance. While the gray stripes do not blend perfectly well, try to adjust until the different tones match as closely as possible.*

2. Click OK to finish calibrating your scanner and monitor.

Screen calibration is not required any more until you change to a different monitor.



## Chapter 3

---

# **Using Your Scanner**

Scanning an Image .....	3-2
Scanning by using the Start button .....	3-5
Scanning with a TWAIN-compliant application .....	3-8
Getting Information from Online Guide .....	3-11
Opening the Online Guide .....	3-12


---

## Scanning an Image

Before scanning a document, remember to respect the rights of copyright owners. Do not scan published text or images without first checking the copyright status.

**Note for Perfection 1640SU Office users:**

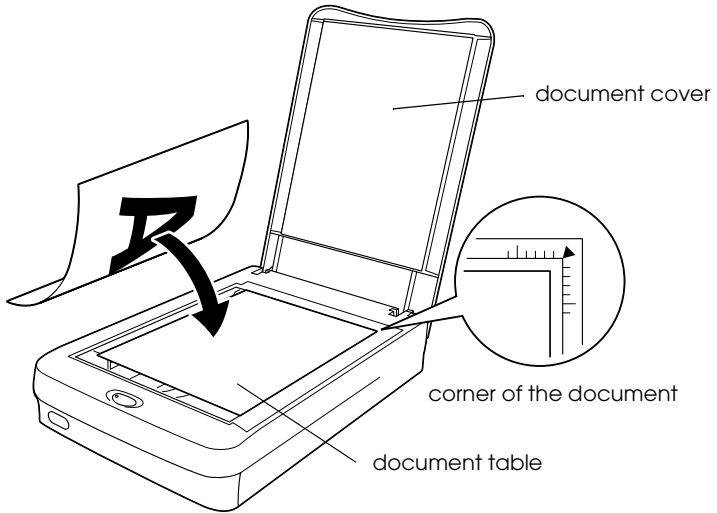
See “Options” in your Online Reference Guide to learn how to scan an image using the Automatic Document Feeder.

1. Place the scanner on a flat, stable surface.
2. Turn on the scanner by pressing the  Operate button. The fluorescent lamp in the carriage turns on.
3. Turn on the computer and make sure that the scanner's indicator light has stopped flashing and now stays on (green).

**Note:**

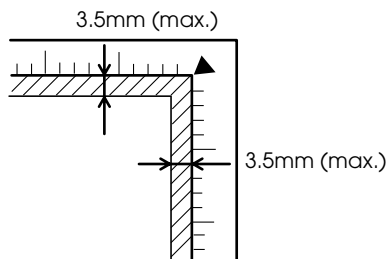
- ❑ *A flashing indicator light (red) indicates an error; in this case see “Maintenance and Troubleshooting” in your Online Reference Guide to troubleshoot the problem.*
  - ❑ *The fluorescent lamp turns off if no command arrives from the computer within 15 minutes. This is normal and the lamp turns back on once you start scanning.*
4. Open the document cover.

5. Place the document on the document table, with the side to be scanned facing down. Make sure that the document is carefully aligned.



**Note:**


*The area with a width of maximum 3.5mm from both the horizontal and vertical guides is not scanned.*



6. Close the document cover gently so that the document does not move.

**Note:**


- ❑ *Do not leave photographs on the document table for an extended period of time as they may stick to the glass.*
- ❑ *Do not place heavy objects on top of the scanner.*
- ❑ *For a thick or large document, you can remove the document cover or the Automatic Document Feeder, depending on your scanner model, to make it easier to align the document. See “Maintenance and Troubleshooting” in your Online Reference Guide.*
- ❑ *See your Online Reference Guide to learn how to use the options.*

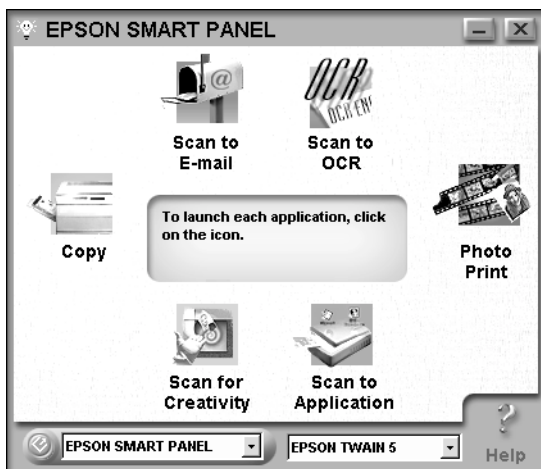
There are two ways to scan: using the  Start button (see the following section), or using a TWAIN-compliant application (see “Scanning with a TWAIN-compliant application” on page 3-8).

**Note:**

- ❑ *You cannot scan an image which exceeds the available memory or disk space. If you try to scan a very large image, an alert appears on the screen.*
- ❑ *Before scanning, be sure to calibrate your screen. For details, see “Calibrating Your Screen” in your Online Reference Guide.*
- ❑ *After an image is scanned, be sure to save it.*

## Scanning by using the Start button

1. Press the  Start button on your scanner. The EPSON SMART PANEL window appears.



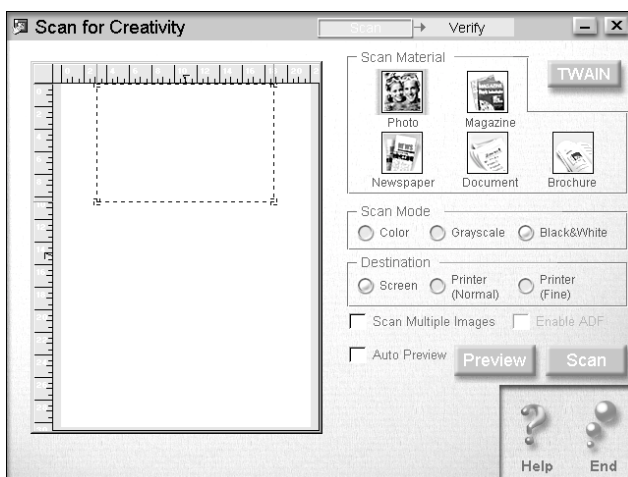
The applications available in the EPSON SMART PANEL window are as follows:

- |                 |   |
|-----------------|---|
| Copy:           | Makes copies of your scanned image.   |
| Scan to E-mail: | Performs scanning process and saves the result or sends e-mails with your scanned image.    |
| Scan to OCR:    | Performs document recognition and saves the result or sends to word processing application. |
| Photo Print:    | Prints your photos in various sizes.  |

Scan to Application: Performs scanning process and sends image data to desired application for further editing.

Scan for Creativity: Scans photos and sends the image data to Adobe® PhotoDeluxe® for creating calendars, cards, labels, and more.

2. Click an application icon. (The example used here is Scan for Creativity.) The following window appears.

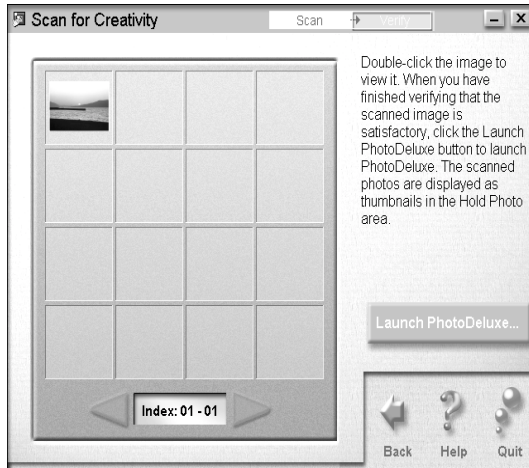


**Note:**

*You can use the Scan for Creativity only if Adobe PhotoDeluxe is installed.*



3. Click Scan. The following window appears.



4. Click Launch PhotoDeluxe.... The scanned image is sent to PhotoDeluxe.

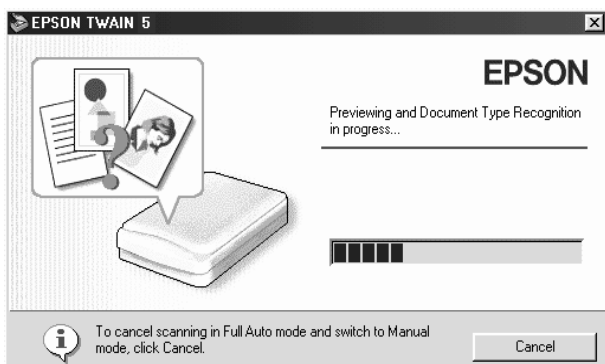
If you want to change more settings, refer to the EPSON SMART PANEL for Scanner documentation.

## Scanning with a TWAIN-compliant application

1. Start a TWAIN-compliant application. (The example used here is PhotoDeluxe.)
2. Select Open Special from the File menu, and then select Scan Photo.
3. Choose EPSON TWAIN 5 from the Select your input source list and click OK to open EPSON TWAIN. The following window appears.

**Note:**

*You usually need to perform this step only the first time you use the scanner with your application.*

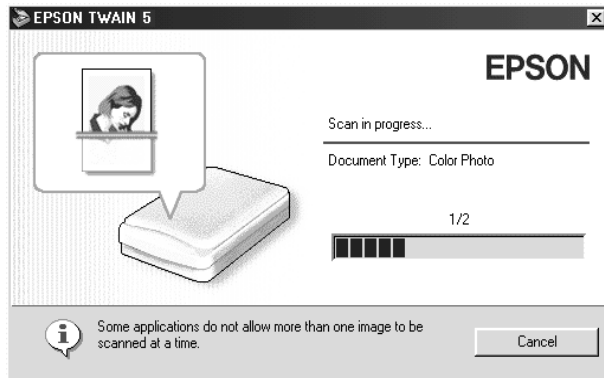


EPSON TWAIN automatically previews the image and recognizes the image type.

**Note for Macintosh users:**

*Most illustrations shown in this chapter are for Windows, so they may be different from the actual dialog boxes that appear on your screen. However, you can use the dialog boxes for both Macintosh and Windows reference, as almost all the settings and functions are the same.*

- The following window appears with a progress bar to indicate the scanning progress. You can see the type of document being scanned. When scanning multiple photos, you can also see the number of scanned images.

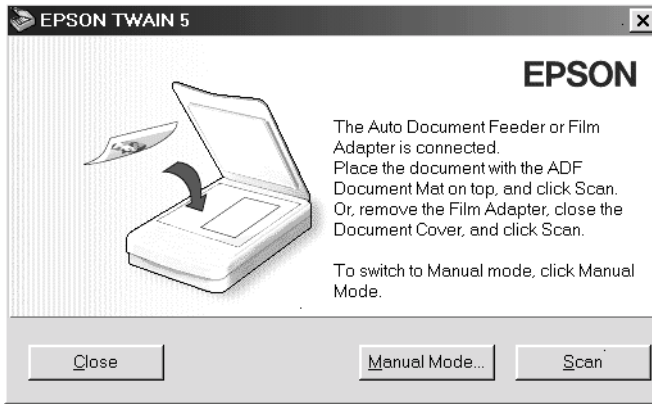


Images are automatically optimized. You can scan easily and quickly without changing any complex settings. EPSON TWAIN automatically recognizes the image type, locates the target image, detects the skew of the target image, adjusts the exposure, and then starts scanning.

If you want to change more settings, see your *Online Reference Guide*.

## When you install the option

When you install the option, the following window appears first. Follow the instructions in the window.



If you want to scan from the Automatic Document Feeder or Film Adapter, click the Manual Mode button. For more details, see your *Online Reference Guide*.

---

## **Getting Information from Online Guide**

### *Reference Guide*

To learn more about your scanner, see the *Online Reference Guide* which includes detailed information on scanning and troubleshooting. You can view the *Online Reference Guide* directly from the CD, or install it on the hard disk of your computer for viewing.

**3**

### *Color Guide*

See this guide to learn about color imaging basics and advanced techniques. It includes samples and troubleshooting information to help answer your color printing questions. View it directly from the CD.

**Note:**

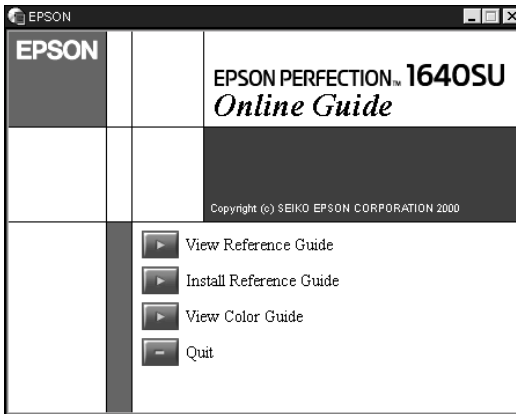
*A Web browser must be installed on your computer to view the Online Reference Guide.*

## Opening the Online Guide

1. Insert the online guide CD in your CD-ROM drive.
2. **For Windows users:**  
The following dialog box appears. If it does not appear, double-click the My Computer icon, and then double-click the CD-ROM icon. Finally, double-click PF1640SU.exe.

### For Macintosh users:

Double-click EPSON Perfection 1640SU. A dialog box similar to the one shown below appears.



3. Click the appropriate View button to open the guide of your choice.

To install the *Online Reference Guide* on your hard disk, click Install Reference Guide and follow the on-screen instructions. When the installation is complete, the Reference Guide icon appears in the EPSON folder (for Windows users) or in the EPSON Perfection 1640SU folder (for Macintosh users). Double-click the icon to open the guide.

### Note:

*If your hard disk does not have enough space for installing the Reference Guide, view it directly from the CD.*

<b>EPSON OVERSEAS MARKETING LOCATIONS</b>
---

---

**EPSON AMERICA, INC.**

20770 Madrona Ave.  
P.O. Box 2842  
Torrance, CA 90509-2842  
Phone: (800) 922-8911  
Fax: (310) 782-5220

**EPSON UK LTD.**

Campus 100, Maylands Avenue,  
Hemel Hempstead, Herts,  
HP2 7TJ, U.K.  
Phone: (+44) 01442 261144  
Fax: (+44) 01442 227227

---

**EPSON DEUTSCHLAND GmbH**

Zülpicher Straße 6,  
40549 Düsseldorf Germany  
Phone: (0211) 56030  
Fax: (0211) 5047787

**EPSON FRANCE S.A.**

68 bis, rue Marjolin  
92300, Levallois-Perret, France  
Phone: 33.1.40.87.37.37  
Telex: 610657

---

**EPSON AUSTRALIA PTY. LTD.**

70 GIBBES STREET, CHATSWOOD 2067 NSW.  
Phone: 2-9903-9000  
Fax: 2-9903-9177

**EPSON SINGAPORE PTE. LTD.**

No. 1 Temasek Avenue #36-00  
Millenia Tower, Singapore 039192  
Phone: (065) 33 77 911  
Fax: (065) 33 41 185

---

**EPSON HONG KONG LTD.**

Rooms 4706-10, 47/F,  
China Resources Bldg.,  
26 Harbour Road, Wanchai, Hong Kong  
Phone: 2585-4300  
Fax: 2827-7083

**EPSON TAIWAN TECHNOLOGY & TRADING LTD.**

10F, No. 287 Nanking E. Road, Sec. 3,  
Taipei, Taiwan, R.O.C.  
Phone: (02) 717-7360  
Fax: (02) 712-9164

---

**EPSON ITALIA S.p.A.**

V.le F.lli Casiraghi 427  
20099 Sesto S.Giovanni  
MI, Italy  
Phone: 2-262331  
Fax: 2-2440750

**EPSON IBERICA S.A.**

Av. de Roma, 18-26  
08290 Cerdanyola del Valles  
Barcelona, Spain  
Phone: 582. 15.00  
Fax: 582. 15.55

---

**SEIKO EPSON CORPORATION  
(Hirooka Office)**

80 Harashinden, Hirooka  
Shiojiri-shi, Nagano-ken  
399-0785 Japan

**EPSON PORTUGAL, S.A.**

R. do Progresso, 471, 1° Perafita  
4460 Matosinhos, Portugal  
Phone: (02) 996 14 02  
Fax: (02) 996 14 11

**EPSON**

Color Image Scanner

EPSON PERFECTION™ **1640SU**  
EPSON PERFECTION™ **1640SU PHOTO**  
EPSON PERFECTION™ **1640SU OFFICE**

*Startup Guide*

Printed in Japan  
XX.XX-XX