

Color Image Scanner

EPSON PERFECTION™ 1660 PHOTO
EPSON PERFECTION™ 2400 PHOTO

EPSON

Setup

English
4025230-00
xxx

Warnings, Cautions, and Notes



Warnings must be followed carefully to avoid bodily injury.

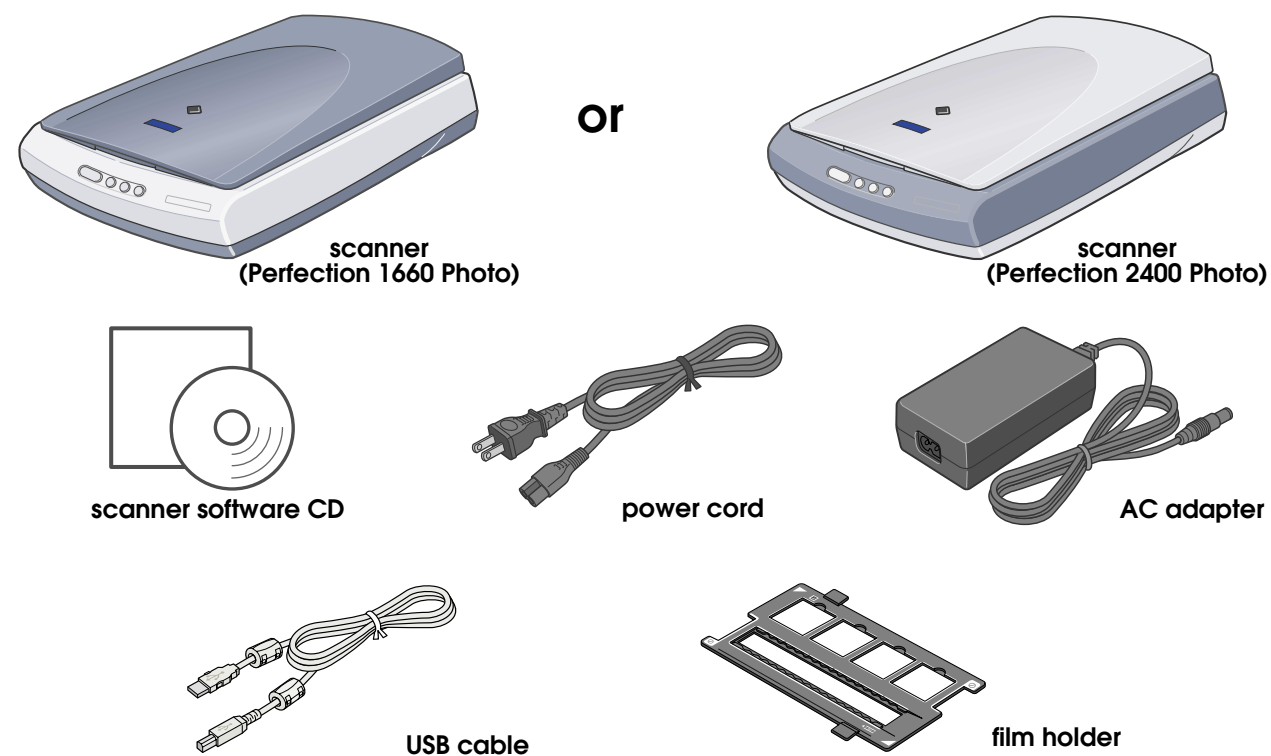


Cautions must be observed to avoid damage to your equipment.

Notes contain important information and useful tips on the operation of your scanner.

1 Unpacking

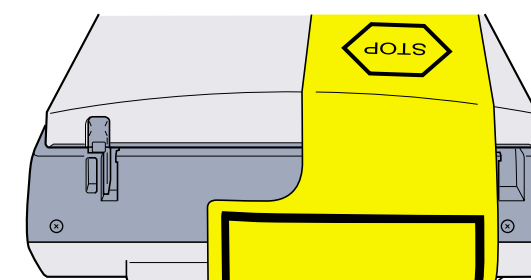
1. Make sure the following items are included and not damaged. If any items are missing or damaged, contact your EPSON dealer immediately.



The contents may vary in certain locations.

2. Remove the packing tape from your scanner, but leave the yellow sticker in place until instructed to remove it.

Important!
Leave the yellow sticker in place until you are instructed to remove it.



2 Installing the Software

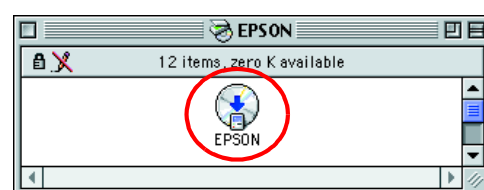
The scanner software CD-ROM contains the EPSON TWAIN driver, software, and electronic manuals.

You must install the software BEFORE connecting the scanner to your computer.

1. Insert the scanner software CD-ROM into the CD-ROM or DVD drive.

Macintosh users:

After inserting the CD-ROM, the EPSON folder appears on the desktop. (If the EPSON folder does not appear, double-click the **EPSON** icon on the desktop.) Double-click the **EPSON** icon inside the folder.



2. The EPSON Installation Program dialog box appears. Select **Install Software** and click **OK**.

Note for Windows users:

If the EPSON Installation Program dialog box does not appear, double-click the **My Computer** icon. Click the CD-ROM icon, then select **Open** from the File menu. Double-click **Setup.exe**.



The appearance of dialog boxes on this sheet may differ slightly from those on your screen.

3. Follow the on-screen instructions until all of the software is installed. When a message appears informing you that installation is complete, click **OK**.
4. Restart your computer if a message appears instructing you to do so.

Note for Mac OS X users:
The software will be installed for use in the Classic mode.

For Perfection 2400 Photo users

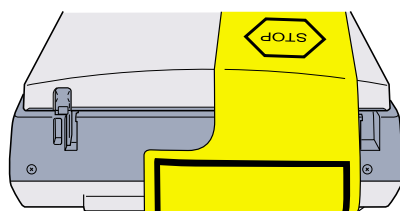
To install Adobe® Photoshop® Elements, insert the Photoshop CD into the CD-ROM or DVD drive, then follow the on-screen instructions.

Macintosh users:

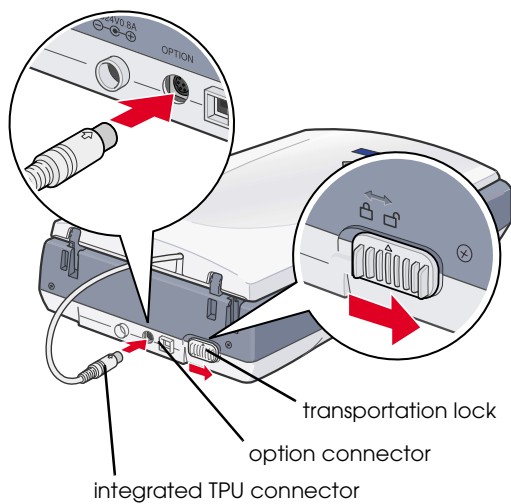
After inserting the CD-ROM, double-click the **Adobe® Photoshop® Elements** icon that appears on the desktop. Then double-click the folder of your preferred language, and double-click the **Adobe® Photoshop® Elements** folder. To begin installation, double-click the installer icon. Then follow the on-screen instructions.

3 Setting Up the Scanner

1. Remove the yellow sticker from the back of the scanner.

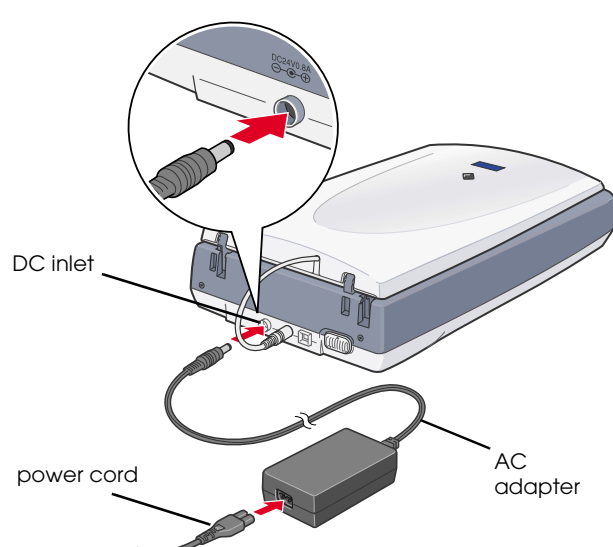


2. Connect the integrated TPU connector to the scanner's option connector.



3. Slide the transportation lock all the way to the right.

4. Connect the power cord and AC adapter, as shown.



5. Connect the AC adapter to the DC inlet on the back of the scanner.

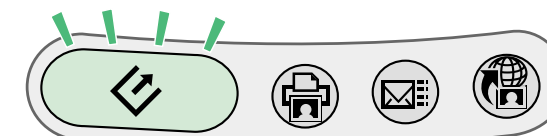
6. Plug the other end of the power cord into an electrical outlet.



Caution:
 It is not possible to change the AC adapter's input or output voltage. If the label on the AC adapter does not show the correct voltage, contact your dealer. Do not plug in the power cord.
 Whenever you unplug the scanner, wait at least 10 seconds before plugging it back in. Rapidly plugging and unplugging the scanner can damage it.

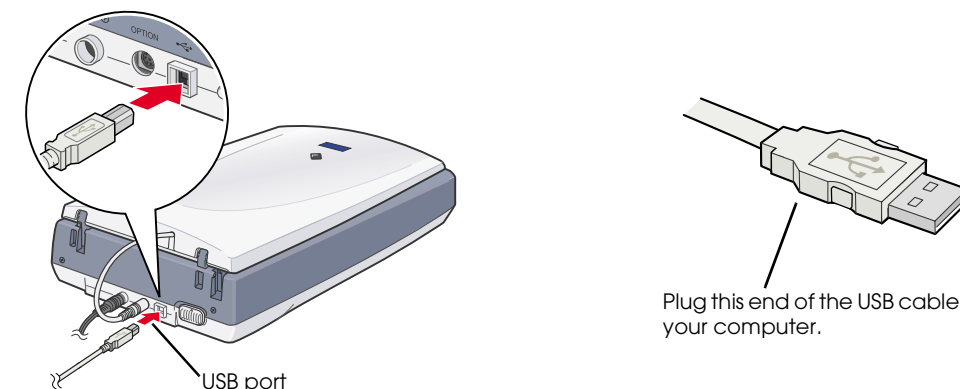
Note:
This scanner does not have a power button. It turns on when you connect the AC adapter and then plug in the power cord.

The scanner turns on and begins to warm up. The Start button blinks green until the scanner finishes warming up, then stops blinking and stays green. This indicates that the scanner is ready for use.



Note:
The Start button light turns off if you do not use the scanner for about 15 minutes.

7. Connect the square connector on the USB cable to the USB port on the back of the scanner. Then connect the other end of the USB cable to any available USB port on your computer.



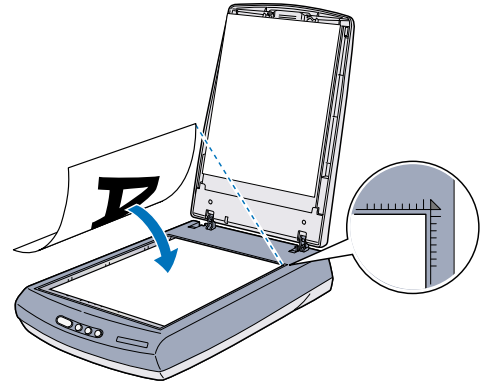
Note:
 Do not connect the scanner through any hubs.

To turn off the scanner, unplug the power cord from the electrical outlet.

4 Your First Scan

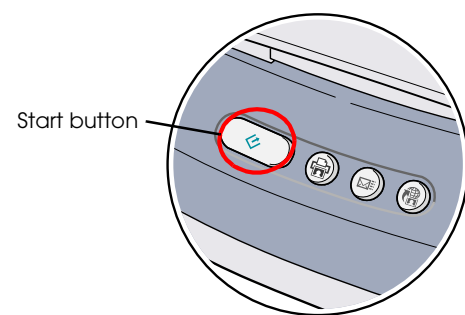
To scan using the Start button and EPSON Smart Panel, follow these steps.

1. Open the integrated TPU and place your document face down on the document table. Then close the integrated TPU.

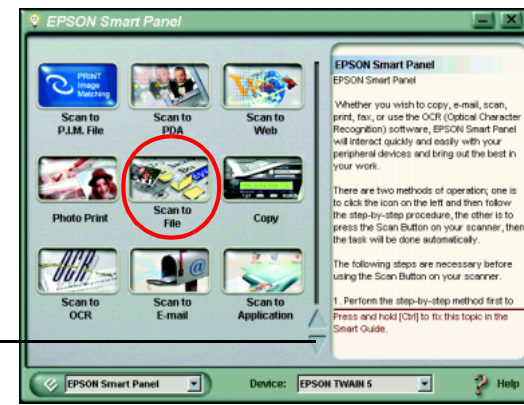


2. Press the Start button on the scanner. After EPSON Smart Panel automatically opens, click the Scan to File icon.

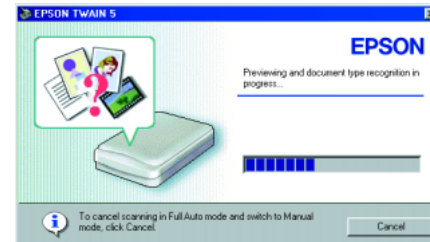
Note:
If the Scan to File icon does not appear in the dialog box, you must first click the down arrow to make the icon appear.



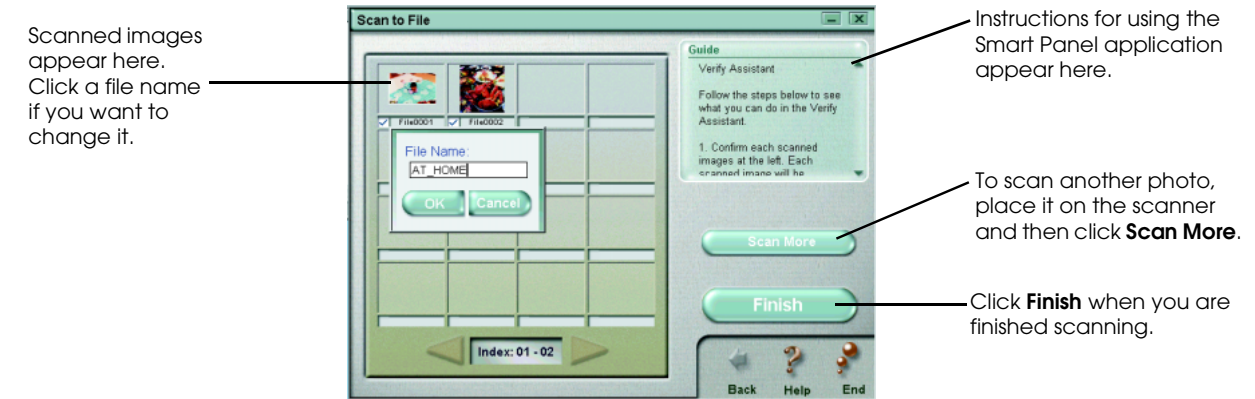
Click this arrow if the Scan to File icon does not appear.



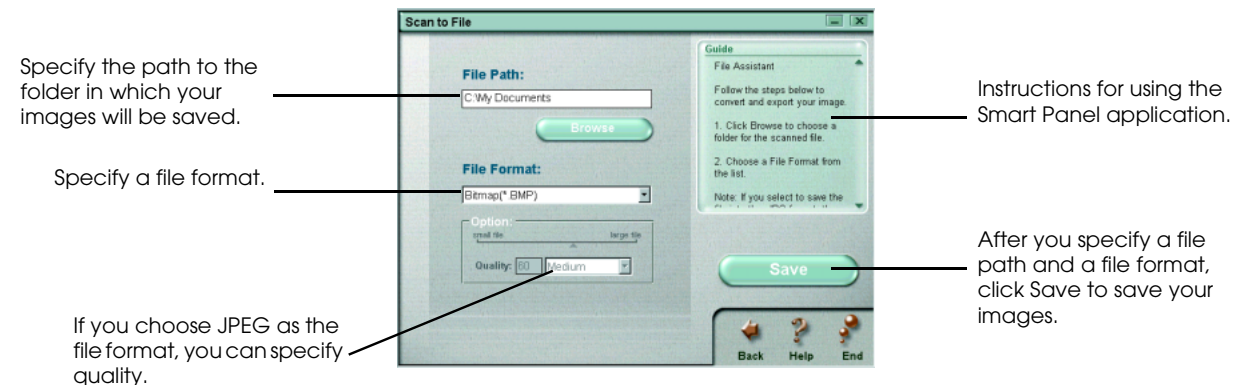
A progress meter appears on the screen and your photo is automatically scanned.



3. After your photo is scanned, the Scan to File dialog box opens. If you want to scan another photo, place it on the document table, close the integrated TPU, then click **Scan More**. Otherwise, click **Finish**.



4. The following dialog box appears allowing you to save your scanned images. First, click the **Browse** button and specify a folder in which to save your images. Then select a file format from the File Format list. Click the **Save** button to save your images.

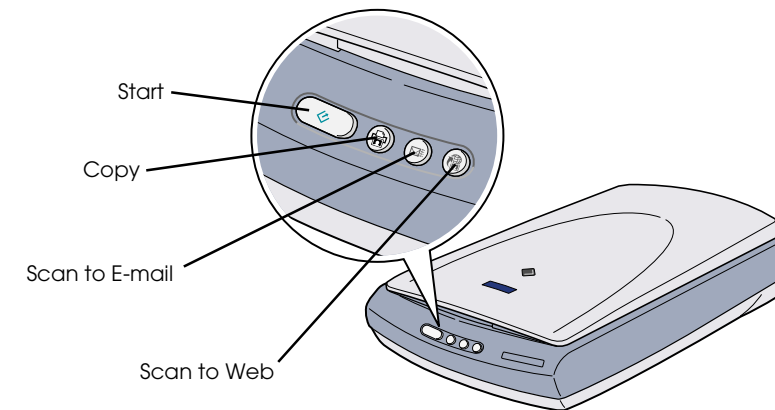


The image files are saved in the designated folder. You can now use the software of your choice to view, edit, or print the images.

Note:
For help with EPSON Smart Panel, click the question mark in the lower right corner of the screen.

Using the Scanner Buttons

The Scanner buttons work with EPSON Smart Panel to provide shortcuts to common scanning functions. You can use them to automatically scan and print a photo, to attach a photo to e-mail, or to scan and upload photos to an EPSON photo sharing site on the Web. For more information, see the *Reference Guide* included on the scanner software CD-ROM, and the electronic *EPSON Smart Panel Help*.



Note for Mac OS X users:
You can use the scanner buttons only when in the Classic mode.

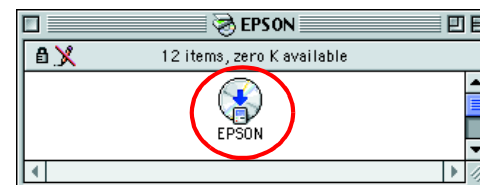
Viewing the Reference Guide

To learn more about your scanner, see the *EPSON Perfection 1260/1660/2400 Reference Guide*.

1. Insert the scanner software CD-ROM into the CD-ROM or DVD drive. If the CD has not been removed since installing the software, remove it and then insert it again.

Macintosh users:

After inserting the CD-ROM, the EPSON folder appears on the desktop. (If the EPSON folder does not appear, double-click the EPSON icon on the desktop.) Double-click the EPSON icon inside the folder.

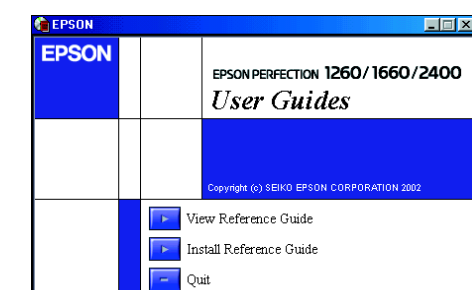


2. The EPSON Installation Program dialog box appears. Select **User Guides** and click **Next**.

Note for Windows users:
If the EPSON Installation Program dialog box does not appear, double-click the My Computer icon. Click the CD-ROM icon, then select **Open** from the File menu. Then, double-click **Setup.exe**.

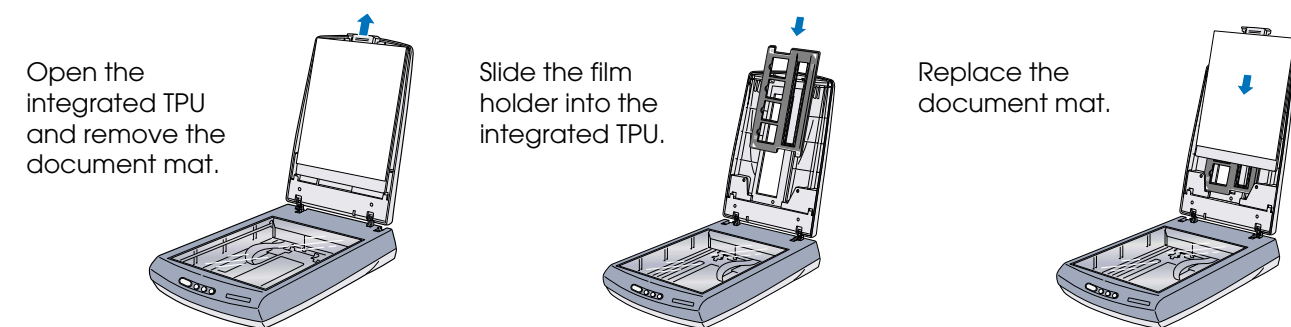


3. To view the *Reference Guide*, click **View Reference Guide**. To copy the *Reference Guide* to your computer, click **Install Reference Guide**.



Storing the Film Holder

When not using the film holder, you can store it inside the integrated TPU.



Safety Instructions

Read all these instructions and save them for later reference. Follow all warnings and instructions marked on the scanner.

Caution: Be sure AC power cord meets the relevant local safety standards.

Place the scanner close enough to the computer for the interface cable to reach it easily. Do not place or store the scanner or the AC adapter outdoors, near excessive dirt or dust, water, heat sources, or in locations subject to shocks, vibrations, high temperature or humidity, direct sunlight, strong light sources, or rapid changes in temperature or humidity. Do not use with wet hands.

Place the scanner and the AC adapter near an electrical outlet where the power cord can be easily unplugged. Power-supply cords should be placed to avoid abrasions, cuts, fraying, crimping, and kinking. Do not place objects on top of power-supply cords and do not allow the AC adapter, or allow power-supply cords to be stepped on or run over. Be particularly careful to keep all power-supply cords straight of the ends and the points where they enter and leave the transformer.

Use only the AC adapter model A171B/E that comes with your scanner. Using any other adapter could cause fire, electrical shock, or injury. The AC adapter is designed for use with the scanner with which it was included. Do not attempt to use it with other electronic devices unless specified.

Use only the type of power source indicated on the AC adapter's label, and always supply power directly from a standard domestic electrical outlet with the AC power cord that meets the relevant local safety standards.

Avoid using outlets on the same circuit as photocopiers or air control systems that regularly switch on and off.

If you use an extension cord with the scanner, make sure the total ampere rating of the devices plugged into the extension cord does not exceed the cord's ampere rating. Also, make sure the total ampere rating of all devices plugged into the electrical outlet does not exceed the electrical outlet's ampere rating. Do not place multiple loads on the electrical outlet.

Never disassemble, modify, or attempt to repair the AC adapter, power cord, scanner, and option by yourself except as specifically explained in the scanner's guides.

Do not insert objects into any openings as they may touch dangerous voltage points or short out parts. Beware of electrical shock hazards.

Unplug the scanner and the AC adapter, and refer servicing to qualified service personnel under the following conditions:
The power cord or plug is damaged; liquid has entered the scanner or the AC adapter; the scanner or the AC adapter has been dropped or the case damaged; the scanner or the AC adapter does not operate normally or exhibits a distinct change in performance. (Do not adjust controls that are not covered by the operating instructions.)

Unplug the scanner and the AC adapter before cleaning. Clean with a damp cloth only. Do not use liquid or aerosol cleaners. If you are not going to use the scanner for a long period, be sure to unplug the AC adapter from the electrical outlet.

For US and Canadian users:
To reduce the risk of fire, use only the included power cord or a 6 to 10 feet long UL-approved type SPT-2 or heavier, 2 x 18 AWG cord with a 125 V 10 A plug and 125 V 7 A connector.

If your AC Adapter is equipped with a polarized alternating-current line plug (a plug having one blade wider than the other) and a polarized power inlet, you must insert the plug into a power outlet in a specific way. This is a safety feature. If you are unable to insert the plug properly, try reversing the plug. If this fails again, contact an electrician to replace your outlet. Be sure to use only the polarized AC cord which comes with the scanner.

For United Kingdom, Singapore, and Hong Kong users:
Replace fuses only with fuses of the correct size and rating.

For United Kingdom users:
The following safety information applies to the AC adapter.

Warning: Refer to the rating plate for the voltage and check that the appliance voltage corresponds to the supply voltage.

Important: The wires in the mains lead fitted to this appliance are coloured in accordance with the following code:

Blue - Neutral

Brown - Live

If you have to fit a plug:
As the colours of the mains lead of this appliance may not match the coloured markings used to identify the terminals in a plug, please observe the following:

The blue wire must be connected to the terminal in the plug marked with the letter N.

The brown wire must be connected to the terminal in the plug marked with the letter L.

If damage occurs to the plug, replace the cord set or consult a qualified electrician.

All rights reserved. No part of this publication may be reproduced, stored in a retrieval system, or transmitted in any form or by any means, electronic, mechanical, photocopying, recording, or otherwise, without the prior written permission of SEIKO EPSON CORPORATION. The information contained herein is designed only for use with this EPSON scanner. EPSON is not responsible for any use of this information as applied to other scanners. Neither SEIKO EPSON CORPORATION nor its affiliates shall be liable to the purchaser of this product or third parties for damages, losses, costs, or expenses incurred by the purchaser or third parties as a result of: accident, misuse, or abuse of this product or unauthorized modifications, repairs, or alterations to this product, or (excluding the U.S.) failure to strictly comply with SEIKO EPSON CORPORATION's operating and maintenance instructions.

SEIKO EPSON CORPORATION shall not be liable for any damages or problems arising from the use of any options or any consumable products other than those designated as Original EPSON Products or EPSON Approved Products by SEIKO EPSON CORPORATION. SEIKO EPSON CORPORATION shall not be held liable for any damage resulting from electromagnetic interference that occurs from the use of any interface cables other than those designated as EPSON Approved Products by SEIKO EPSON CORPORATION. EPSON is a registered trademark of SEIKO EPSON CORPORATION. Microsoft and Windows are registered trademarks of Microsoft Corporation.

General Notice: Other product names used herein are for identification purposes only and may be trademarks of their respective owners. EPSON disclaims any and all rights in those marks.