

# Start Here

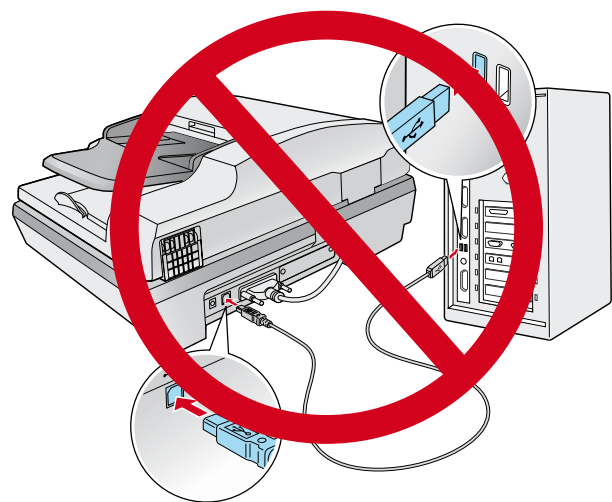
GT-2500



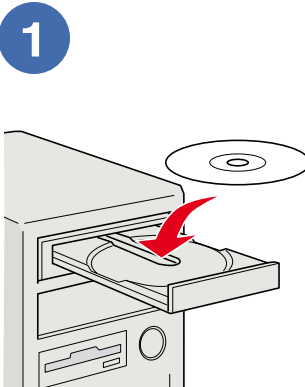
## 1 Unpack



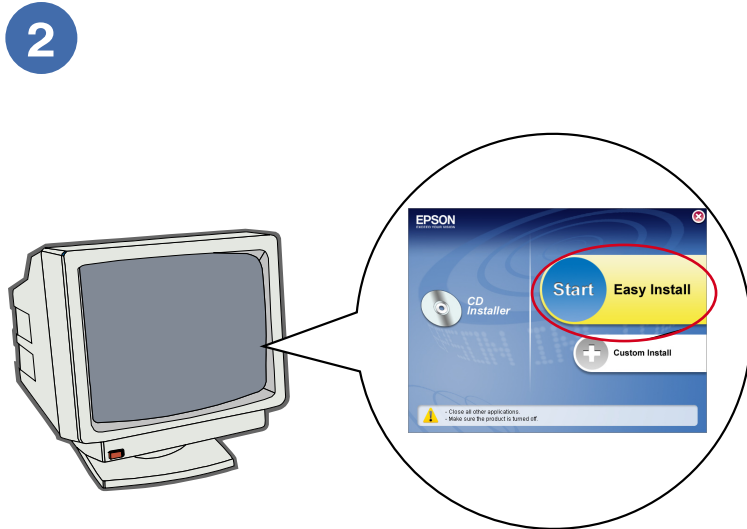
## 2 Install Software



Do not connect the USB cable yet.

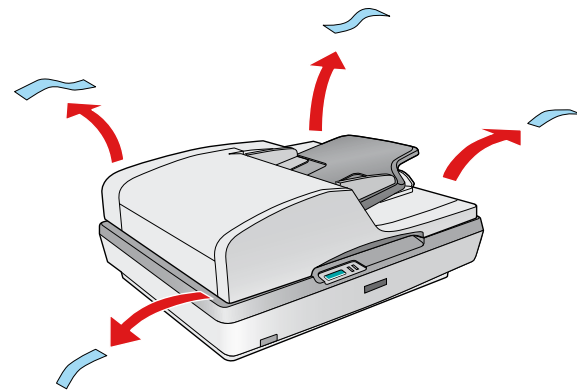


**Macintosh OS X:** Double-click the CD-ROM icon on the desktop.

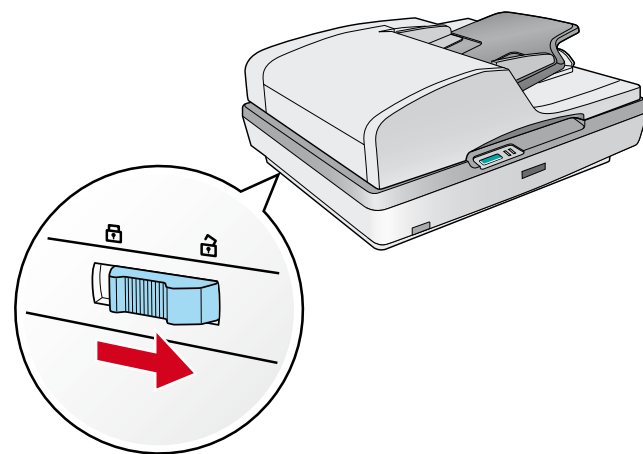


**3** Follow the on-screen instructions and select the default options.

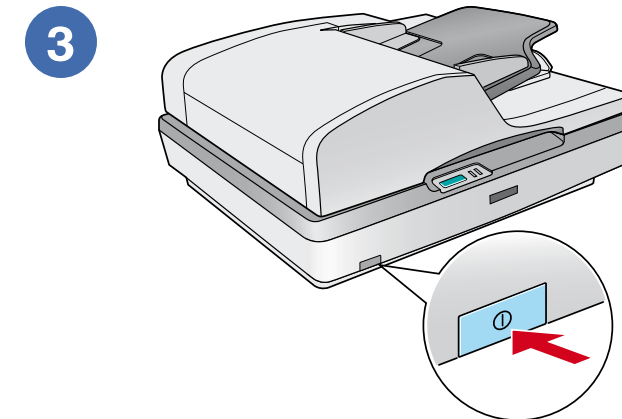
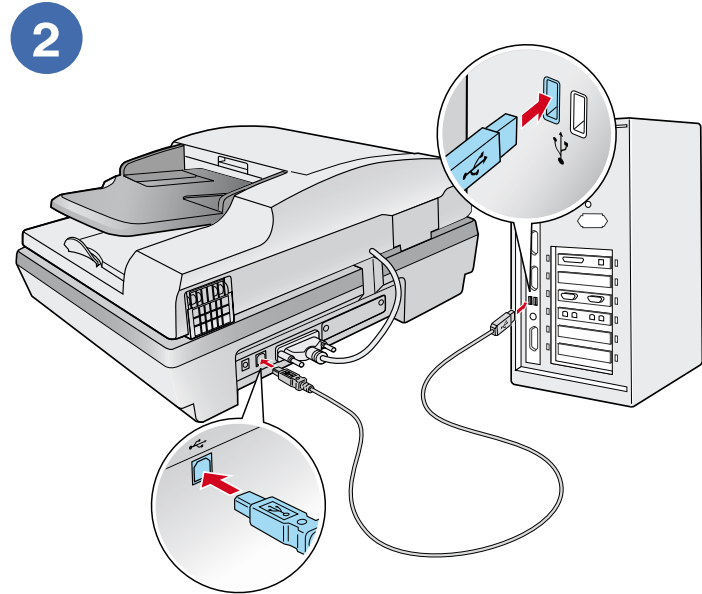
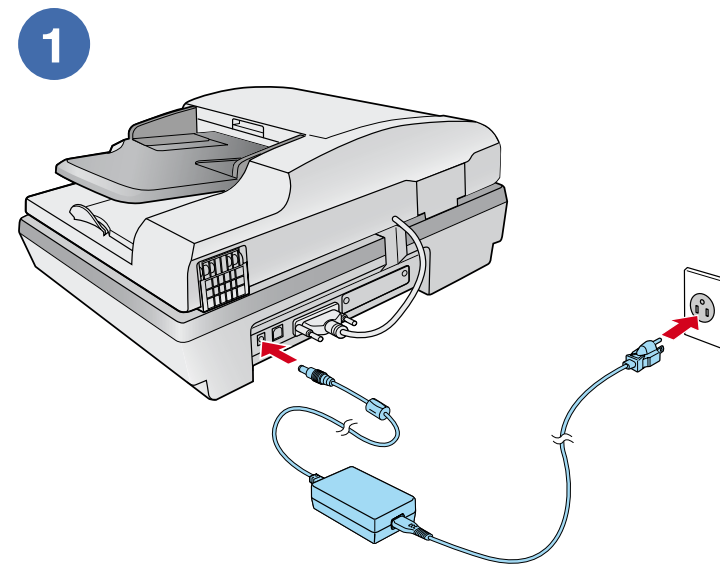
## 3 Remove Protective Tape



## 4 Unlock



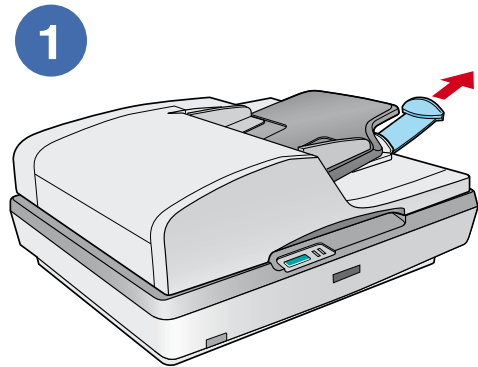
## 5 Connect and turn on



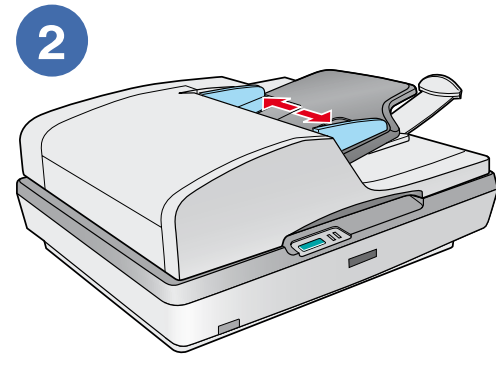
\*410522500\*

Printed in XXXXXX XX.XX-XX XXX

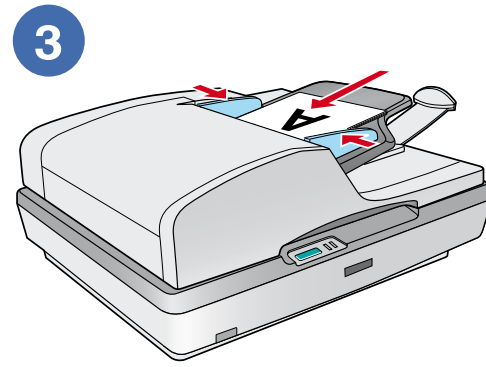
# 6 Scan a document



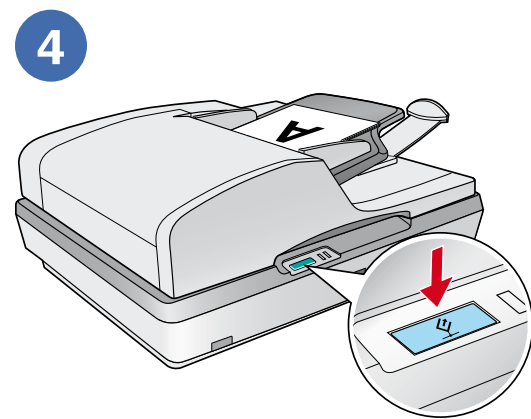
Pull out the paper support.



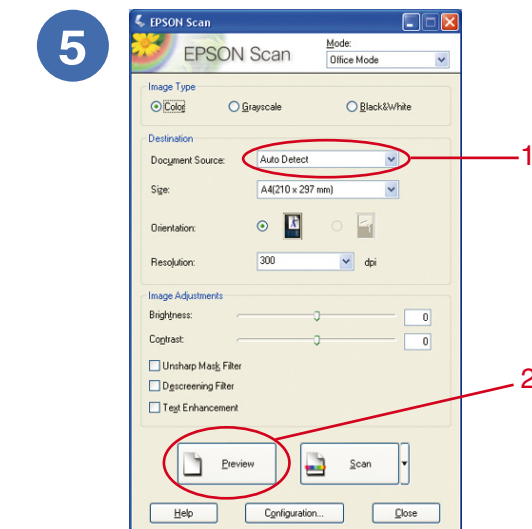
Slide the edge guides outward.



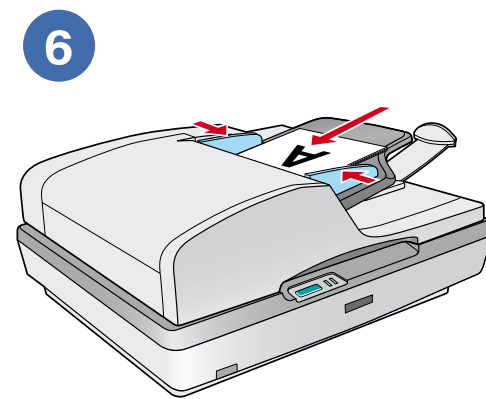
Load the first page of your original document face-up and top edge first. Then slide in the edge guides.



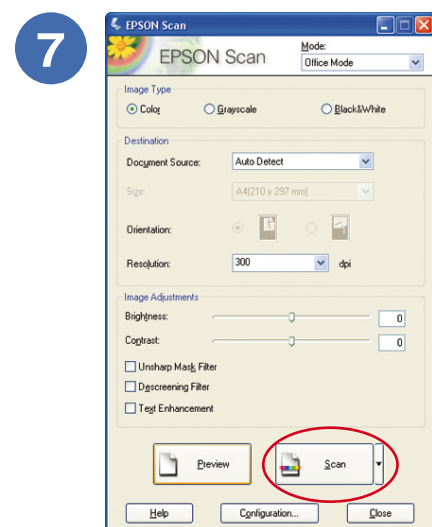
Press the  Start button.



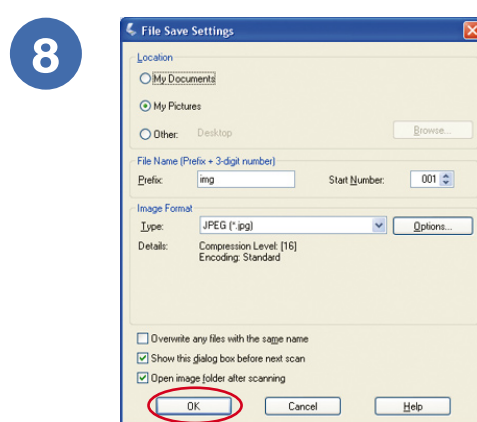
Make sure **Auto Detect** is selected, then click **Preview**.



Remove the first page after it ejects. Then place it on top of the rest of your document (up to 50 pages) and reload it.



Click **Scan**.

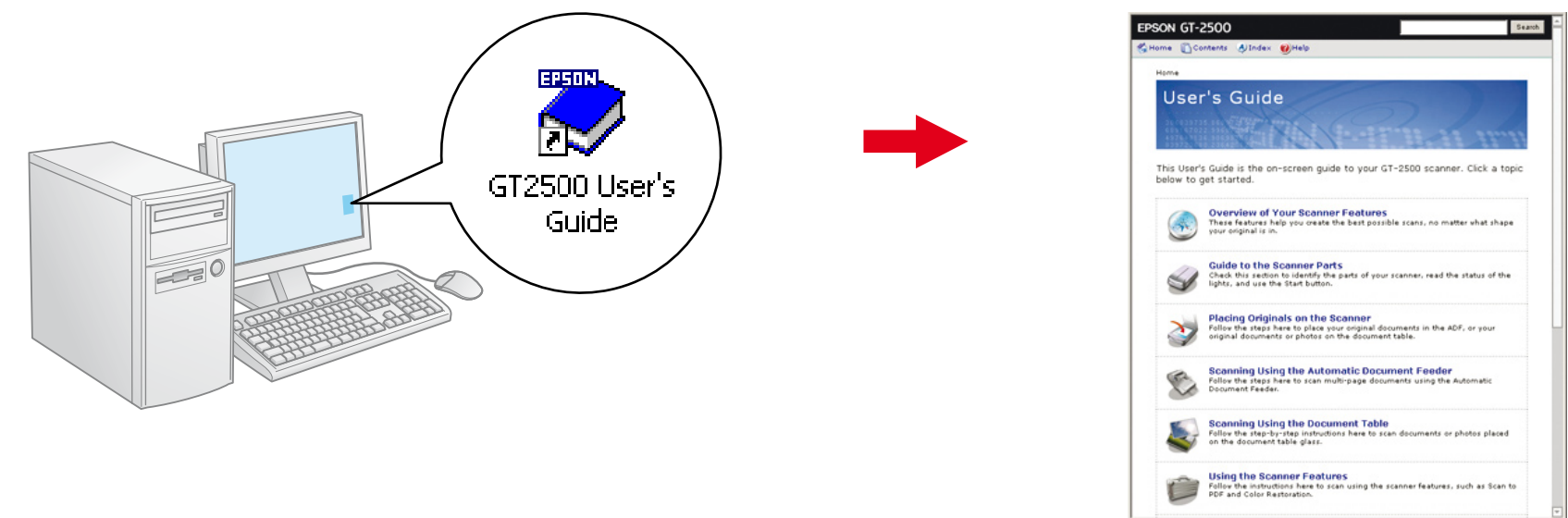


Select your file settings and click **OK**.

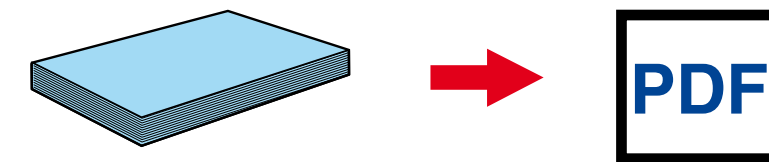
**Note:** You can also place documents or photos directly on the document table glass and scan them from there. See your on-screen *User's Guide* for instructions.

## Do more

View the on-screen *User's Guide* for instructions on using your scanner features.



### Scanning to a PDF file



2 Click  **Using the Scanner Features**.

## Help

### EPSON Scan

