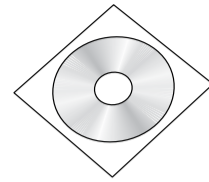
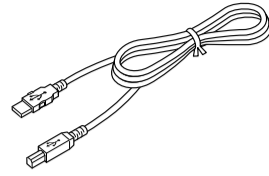
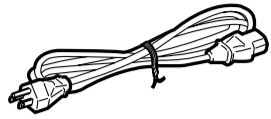
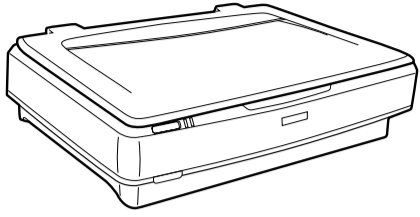
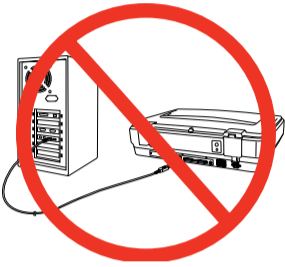




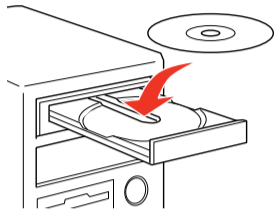
## 1 Unpack



## 2 Install software

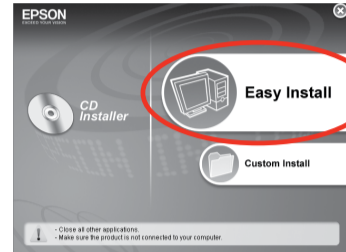


Do not connect the USB cable yet.



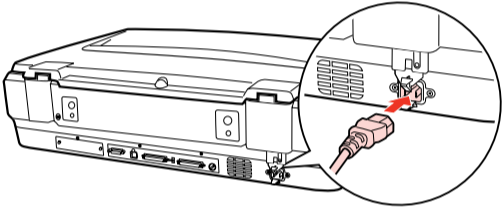
For Windows, if you don't see this screen, double-click the CD-ROM icon.

For Mac, double-click the Mac OS X icon.

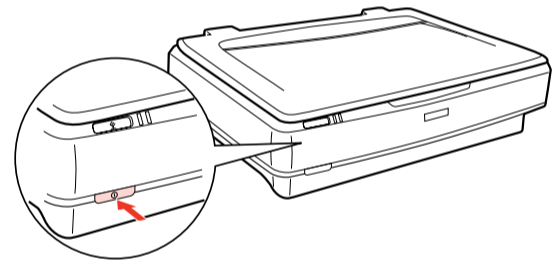
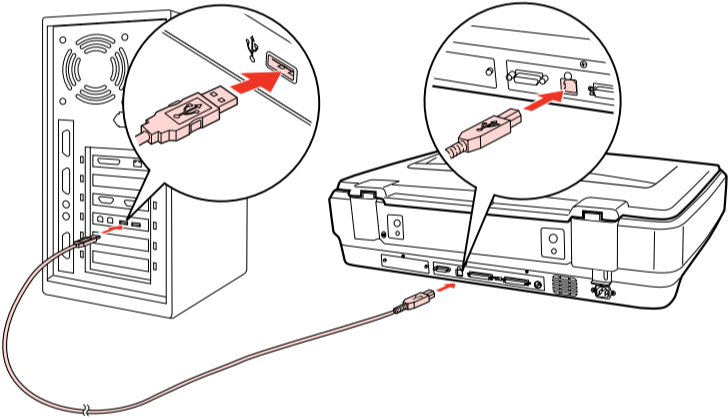


Follow the on-screen instructions and select the default options.

## 3 Connect and turn on

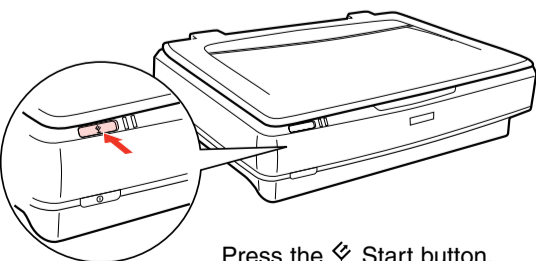
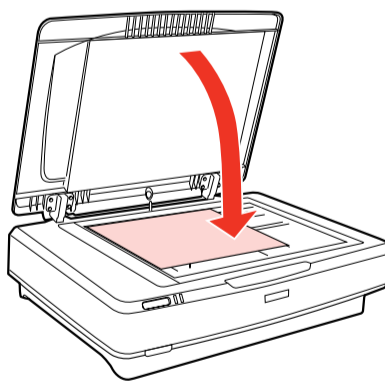
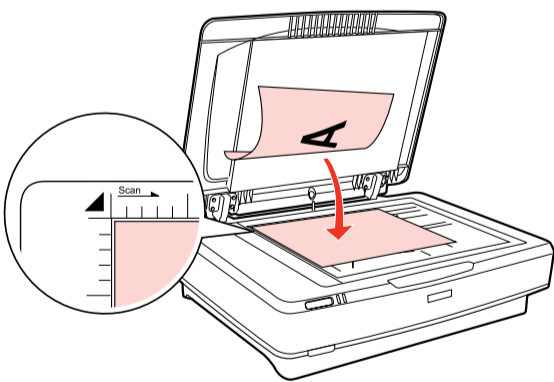


Plug the power cord into the scanner. You may feel some resistance, but make sure you plug the cord in fully. As you plug it in, the power cord will automatically move the transportation lock to the unlocked position. Plug the other end of the cord into an electrical outlet.

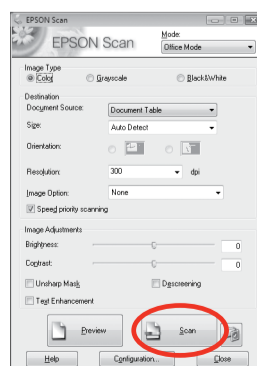


Turn on the scanner.

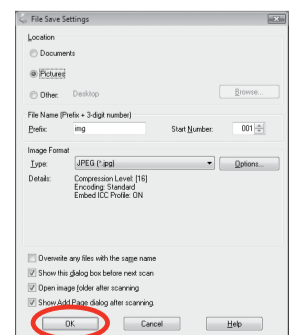
## 4 Scan a document



Press the Start button.



Click Scan.

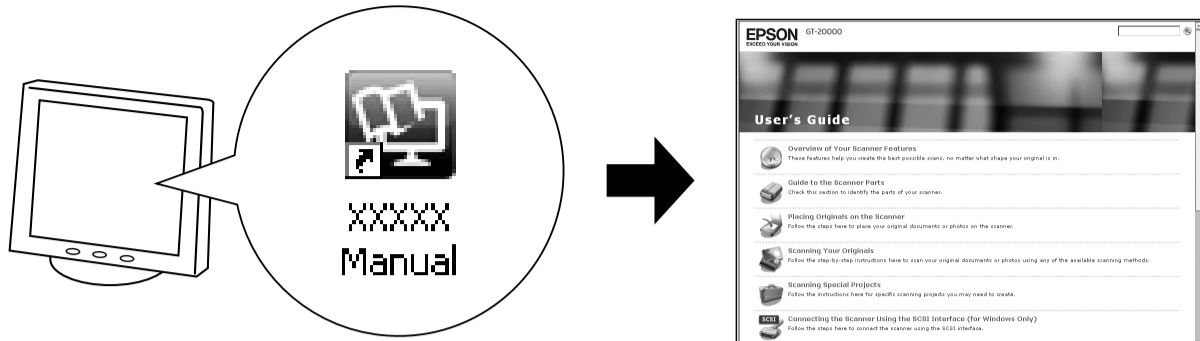


Epson Scan scans your document. Wait for your scan to finish.

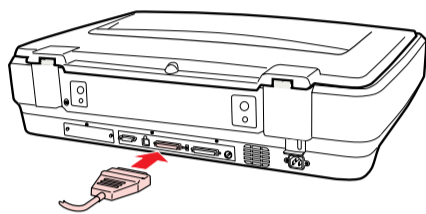



## Do more

View the On-screen User's Guide to:

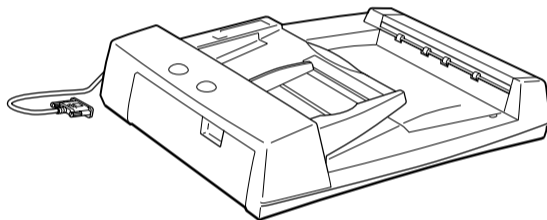



- **Connect the scanner using a SCSI cable**



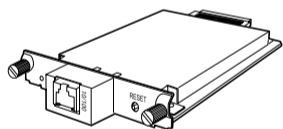
Click  **Connecting the Scanner Using the SCSI Interface.**


- **Scan multiple pages using the optional Automatic Document Feeder**



Click  **Using the Optional Automatic Document Feeder.**

- **Scan over a network using the optional Epson Network Image Express Card**



Click  **Using the Optional Network Image Express Card.**

**Note:** For more information about these and other features, see your on-screen *User's Guide*.



## Help

### Epson Scan

