

**EPSON**

EPSON Scanner Utility Programs

**EPSON Scan Server**  
**EPSON TWAIN Pro Network**

*User's Guide*

4012422-01  
S01

# EPSON® Scan Server & EPSON TWAIN Pro Network

## SCANNER UTILITY PROGRAMS

All rights reserved. No part of this publication may be reproduced, stored in a retrieval system, or transmitted in any form or by any means, electronic, mechanical, photocopying, recording, or otherwise, without the prior written permission of SEIKO EPSON CORPORATION. No patent liability is assumed with respect to the use of the information contained herein. Neither is any liability assumed for damages resulting from the use of the information contained herein.

Neither SEIKO EPSON CORPORATION nor its affiliates shall be liable to the purchaser of this product or third parties for damages, losses, costs, or expenses incurred by purchaser or third parties as a result of: accident, misuse, or abuse of this product or unauthorized modifications, repairs, or alterations to this product.

SEIKO EPSON CORPORATION and its affiliates shall not be liable against any damages or problems arising from the use of any options or any consumable products other than those designated as Original EPSON Products or EPSON Approved Products by SEIKO EPSON CORPORATION.

EPSON is a registered trademark of SEIKO EPSON CORPORATION.

IBM and PS/2 are registered trademarks of International Business Machines Corporation.

Apple, Macintosh, Mac, iMac, and Power Macintosh are registered trademarks of Apple Computer, Inc.

Microsoft and Windows are registered trademarks of Microsoft Corporation in the United States of America and other countries.

*General Notice: Other product names used herein are for identification purposes only and may be trademarks of their respective companies.*

Copyright © 2000 by SEIKO EPSON CORPORATION, Nagano, Japan.



Printed on Recycled Paper.

---

## User's Guide



---

# Contents

## **Introduction**

---

Features . . . . .	1
About This Guide . . . . .	3
References . . . . .	4

## **Chapter 1 Installing the Software**

---

System Requirements . . . . .	1-2
Software for Scanning over a Network . . . . .	1-2
Installing EPSON Scan Server . . . . .	1-3
Setting the default scanner for Windows 98 and 2000 users	1-9
Changing the start up mode . . . . .	1-12
Installing EPSON TWAIN Pro Network . . . . .	1-13
Calibrating Your Screen . . . . .	1-19

## **Chapter 2 Network Scanning Basics**

---

Network Scanning Procedure . . . . .	2-2
Starting EPSON Scan Server . . . . .	2-2
Starting EPSON TWAIN Pro Network . . . . .	2-3
Scanning an Image . . . . .	2-5
Using the EPSON TWAIN Pro Network dialog box on the client	
PC . . . . .	2-5
Using the Start button on the scanner . . . . .	2-7
Using the Start button in the EPSON Scan Server dialog box	2-8
Getting Information from Online Help . . . . .	2-10

## **Chapter 3 Troubleshooting**

---

Problems and Solutions . . . . .	3-2
----------------------------------	-----

## ***Appendix A Scanner Server PC Setup***

---

Setting up the Scanner Server PC. . . . .	A-2
Installing the TCP/IP Protocol. . . . .	A-2
Installing the TCP/IP protocol (Windows 98, 95) . . . . .	A-2
Installing the TCP/IP protocol (Windows 2000) . . . . .	A-6
Installing the TCP/IP protocol (Windows NT 4.0) . . . . .	A-9
Setting the Scanner Server PC's IP Address. . . . .	A-12
Assigning an IP address to a scanner server PC on Windows 98/95. . . . .	A-12
Assigning an IP address to a scanner server PC on Windows 2000 A-15	
Assigning an IP address to a scanner server PC on Windows NT 4.0 . . . . .	A-17
Connecting the Scanner to the Scanner Server PC . . . . .	A-18

## ***Glossary***

---

## ***Index***

---

---

# ***Introduction***

---

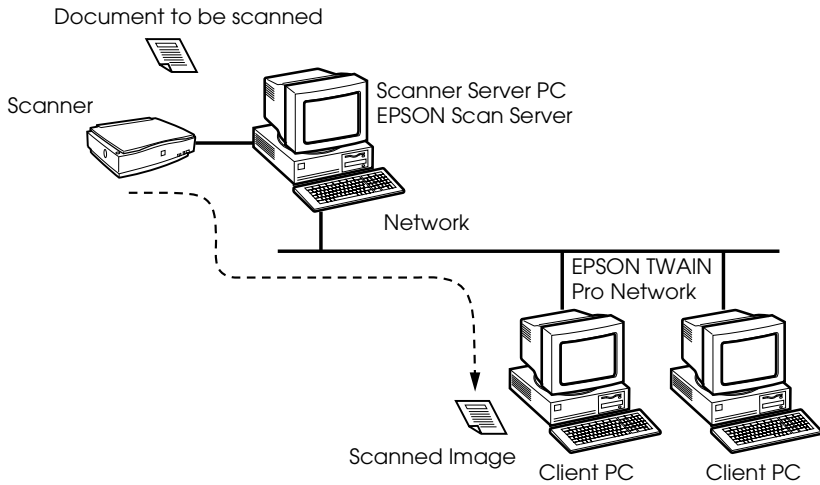
## ***Features***

EPSON Scan Server and EPSON TWAIN Pro Network software work together to directly control all of the features of your EPSON scanner in a networked environment. Through the use of these software packages, you can share one or more scanners among the users in a network and allow scanned images to be imported into any TWAIN-compliant application.

EPSON Scan Server software is installed on a PC running on Windows which is connected to an EPSON scanner (hereafter, the PC is called the scanner server PC), and makes the EPSON scanner shareable in the network. The scanner can be accessed from all client PCs which have EPSON TWAIN Pro Network software installed.

EPSON TWAIN Pro Network software controls the functions of your scanner just like EPSON TWAIN Pro software and can be used in a networked environment. On the other hand, EPSON TWAIN Pro software is designed to be used only in a stand-alone configuration in which only one PC is connected to an EPSON scanner.

The illustration below shows a sample network configuration in which networked scanning is available. One of the clients can be connected to the scanner server PC and import a scanned image from the scanner. After disconnecting, another client can access the scanner server PC.



If there are multiple EPSON scanners and scanner server PCs in the network, you can select which scanner to be used in the EPSON TWAIN Pro Network setup dialog box on the client. To share an EPSON scanner by clients in the network, only one EPSON scanner can be connected to one scanner server PC.

---

## About This Guide

This *User's Guide* provides detailed instructions for installing and using EPSON Scan Server and EPSON TWAIN Pro Network software.

- ❑ Chapter 1 contains information about installing EPSON Scan Server and EPSON TWAIN Pro Network software.
- ❑ Chapter 2 provides basic information about networked scanning.
- ❑ Chapter 3 contains troubleshooting information.
- ❑ The Appendix describes the procedure for initially setting up a computer to be a scanner server PC.

*Notes in this Guide contain important information and useful tips on operating your scanner or software.*

This *User's Guide* assumes that you have a basic understanding of the Windows operating system.

In this guide, the word "Windows" generally includes Windows 95, 98, NT 4.0, and Windows 2000 versions. Furthermore, screen displays of Windows 98 are used to represent displays of all versions of Windows unless the operating procedure differs between versions. When explanations cover specific versions of Windows, phrases such as "Windows 95", "Windows NT 4.0", or "Windows 2000" will be used to identify the version.



---

## **References**

There are other detailed user guides which contain useful information for scanning. Please refer to those manuals to achieve the best quality scanned images.

### ***Online Reference Guide***

Provides basic information about scanning and detailed reference on settings and functions of EPSON TWAIN Pro and other EPSON scanner utility software. It also includes information on how to calibrate your system, maintenance and troubleshooting tips, technical specifications, and customer support information. Since the settings and functions for EPSON TWAIN Pro and EPSON TWAIN Pro Network are the same, please refer to this guide for details on the settings and functions of EPSON TWAIN Pro Network.

### ***Setup Guide for your EPSON scanner***

Leads you through scanner setup and options installation, tells you how to use the scanner and how to make basic scans. Be sure to read this guide before connecting your scanner to a computer running EPSON Scan Server.

---

## ***Installing the Software***

System Requirements .....	1-2
Software for Scanning over a Network .....	1-2
Installing EPSON Scan Server .....	1-3
Setting the default scanner for Windows 98 and 2000 users .....	1-9
Changing the start up mode .....	1-12
Installing EPSON TWAIN Pro Network .....	1-13
Calibrating Your Screen .....	1-19

---

## **System Requirements**

Computer:	IBM PC/AT compatible computer (Intel Pentium or faster processor is recommended)
Operating System:	Windows 98/95, Windows NT 4.0, or Windows 2000
System Configuration:	Minimum two PCs in a network
Scanner:	EPSON GT-10000+
Hardware Interface for scanner:	SCSI, IEEE1394
Hardware Interface for networking:	10BASE-T/100BASE-TX, 10BASE-5, 10BASE-2
Ethernet Communication Protocol:	TCP/IP

---

## **Software for Scanning over a Network**

To use EPSON scanners in a networked environment and send scanned images to client PCs, you need to install the following software:

- EPSON Scan Server on the PC connected to the EPSON scanner you want to use
- EPSON TWAIN Pro Network on network clients

**Note:**

*To install the scanner software in Windows 2000 or NT 4.0, you need to log on to Windows as an Administrator.*

---

## ***Installing EPSON Scan Server***

Before installing EPSON Scan Server, you need to do the following:

1. Connect your scanner to the scanner server PC.
2. Turn on the scanner, then the scanner server PC.
3. Insert the EPSON Scanner Software CD in the CD-ROM drive.

If Windows 98, Windows 95, or Windows 2000 is used, it automatically detects the connected scanner and starts the New Hardware Found Wizard.

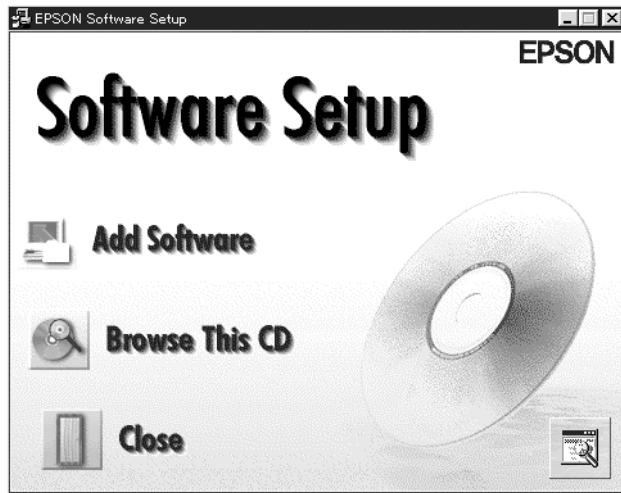
Type X:\EPSON\language\Win98 if you are using Windows 98, or X:\EPSON\language\Win95 if you are using Windows 95, or X:\EPSON\language\Win2000 if you are using Windows 2000 as the location, where X is the drive letter of the CD-ROM drive and language is your language such as English or French.

If using Windows 95, the .inf file is installed. On Windows 98 and Windows 2000, EPSON TWAIN Pro is installed.

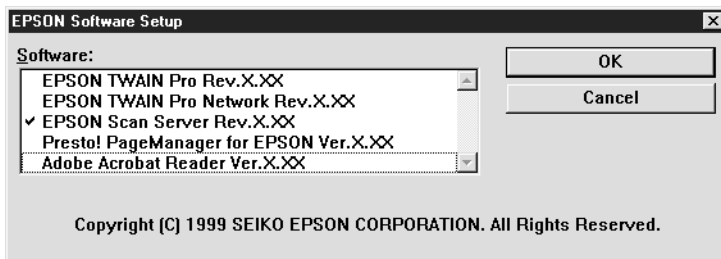
4. Start the Windows Explorer and double-click Cdsetup.exe in the CD-ROM drive.
5. Select the language that you want to use in the Select Language dialog box and click OK.

The EPSON Software Setup dialog box appears.

6. Click Add Software in the EPSON Software Setup dialog box.

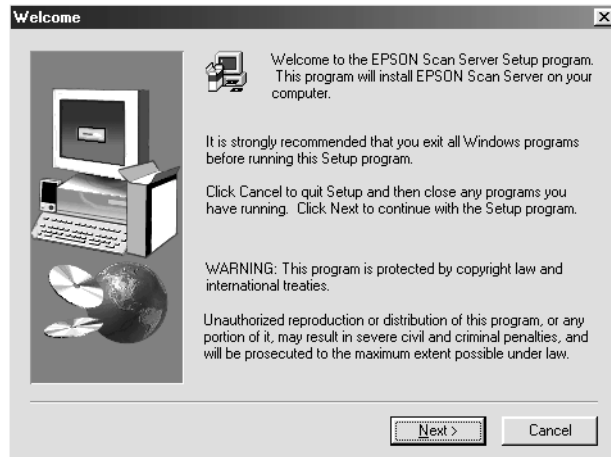


7. Select EPSON Scan Server by checking to the left of the name in the EPSON Software Setup dialog box. At this point, you can select other applications to be installed. Make sure to remove the check mark from application which is already installed on the scanner server PC.



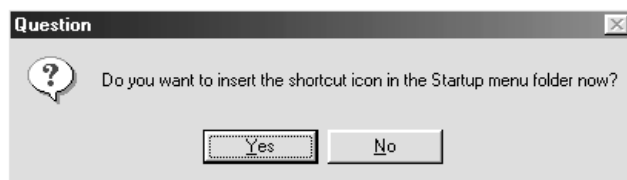
8. Click OK to start the installation of selected applications.  
The Welcome dialog box appears.

9. Click Next to continue.



The File Copy Progress bar appears. After files are copied, the Question dialog box appears.

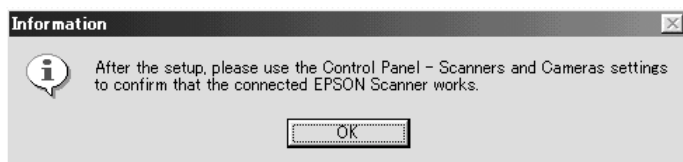
10. Click Yes or No.



11. Find your version of Windows below and follow the instructions.

## For Windows 98 and 2000 users:

The information dialog box appears. Click OK, then go to step 16 to finish the setup procedure.



### **Note:**

*After you finish the setup procedure, be sure to double-click the Scanners and Cameras icon on the Control Panel and select EPSON GT-10000 in the Scanners and Cameras Properties list. See "Setting the default scanner for Windows 98 and 2000 users" on page 1-9 for details.*

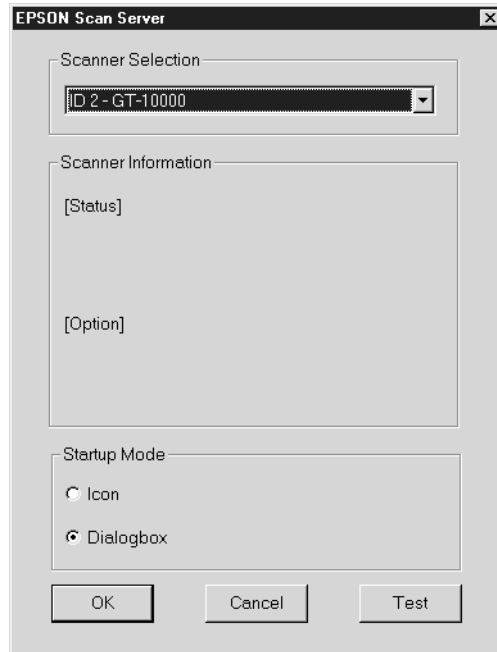
## For Windows 95 and NT 4.0 users:

The EPSON Scan Server dialog box appears.



Click Next, the EPSON Scan Server setup dialog box appears.

1



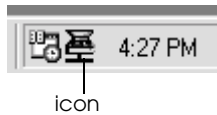
12. Select the scanner to be used from the Scanner Selection box.

**Note:**

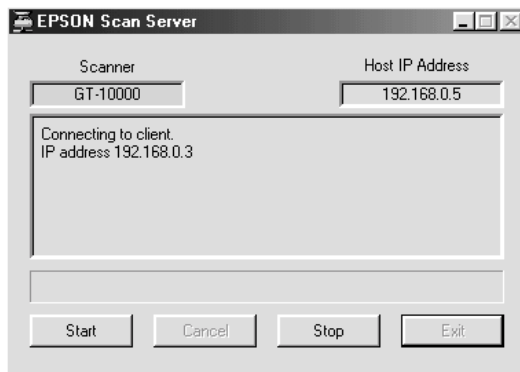
*If the EPSON TWAIN Pro software or device information file is not already installed on the scanner server PC using Windows 95, no available scanners will appear on the list at this point. In this case, skip selection of the scanner name and continue the installation. Then proceed with the installation of the EPSON TWAIN Pro software. After the installation, select EPSON Scan Server from the Control Panel. Now the scanner name is on the list and can be selected.*



13. Select the desired start up mode between Icon or Dialog box.  
In icon start up mode, the EPSON Scan Server icon appears in the Taskbar tray when Scan Server starts as shown below.



In dialog box mode, the following dialog box appears when Scan Server starts.



14. To test the status of the scanner, click Test.

After the test is completed, information about the scanner status is displayed below the [Status] heading.

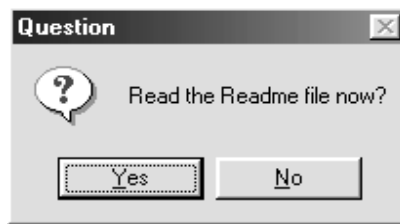
15. After setting this dialog box, click OK.

The Setup Complete dialog box appears.

16. Click OK.



17. Click Yes or No.



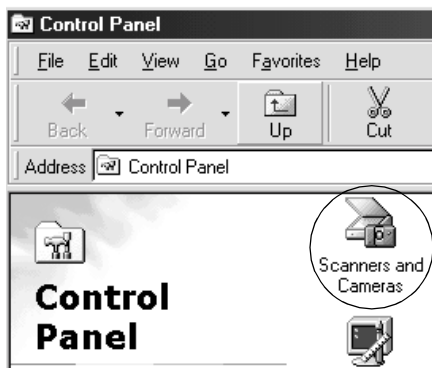
Installation of EPSON Scan Server is complete.

## ***Setting the default scanner for Windows 98 and 2000 users***

Windows 98 and 2000 users can select the default scanner they want to use from Scanners and Cameras on the Control Panel once they have installed EPSON Scan Server. The following describes how to select the default scanner.

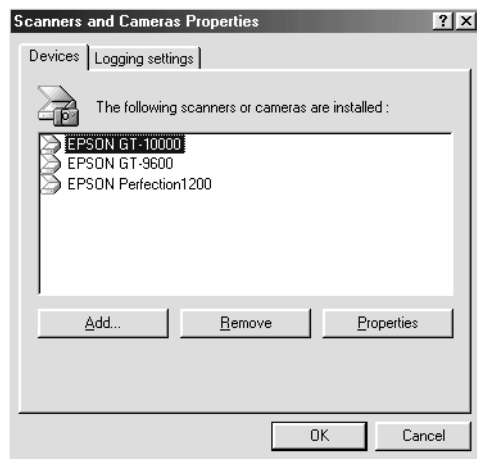
1. Make sure you have completed installation of EPSON Scan Server as described on pages 1-3 to 1-9.

2. Double-click the Scanners and Cameras icon on the Control Panel.



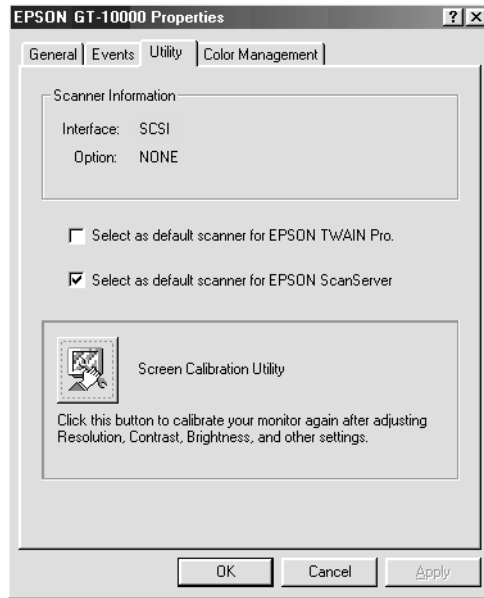
The Scanners and Cameras Properties dialog box appears showing a list of scanners and cameras installed on your computer.

3. Select EPSON GT-10000 and click the Properties button.



The EPSON GT-10000 Properties dialog box appears.

- Click the Utility tab, make sure Select as default scanner for EPSON Scan Server is checked and then click OK.



- Click OK.

## ***Changing the start up mode***

### **Dialog box to Taskbar icon:**

To change from the dialog box start up mode to the Taskbar icon start up mode, click the scanner icon in the upper left corner of the EPSON Scan Server dialog box and select Taskbar Icon from the drop down menu. A check mark will appear next to Taskbar Icon.

### **Taskbar icon to dialog box:**

To change from the Taskbar icon start up mode to the dialog box start up mode, right-click the Scan Server icon in the Taskbar tray and click Taskbar Icon to remove the check mark.

Your settings will take effect the next time you start EPSON Scan Server.

---

## Installing EPSON TWAIN Pro Network

Install and use EPSON TWAIN Pro Network on a client PC that is connected to your network. Make sure you know the IP address or host name of the host computer on which you installed EPSON Scan Server as you will need it while installing EPSON TWAIN Pro Network.

1. Insert the EPSON Scanner Software CD in the CD-ROM drive.

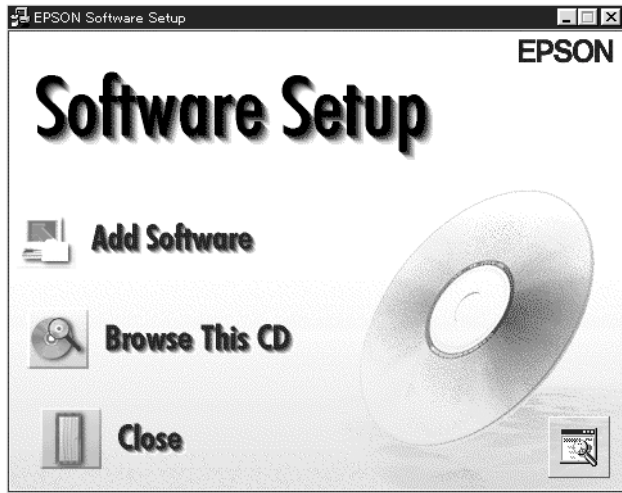
The installer automatically starts and the Select language dialog box appears. If the dialog box doesn't appear, start Windows Explorer and double-click Cdsetup.exe in the CD-ROM drive.

2. Select the language that you want to use in the Select Language dialog box and click OK.

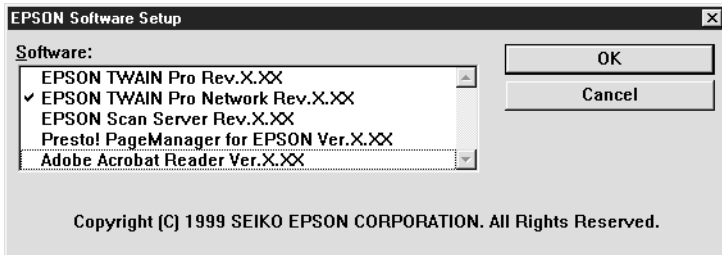


The EPSON Software Setup dialog box appears.

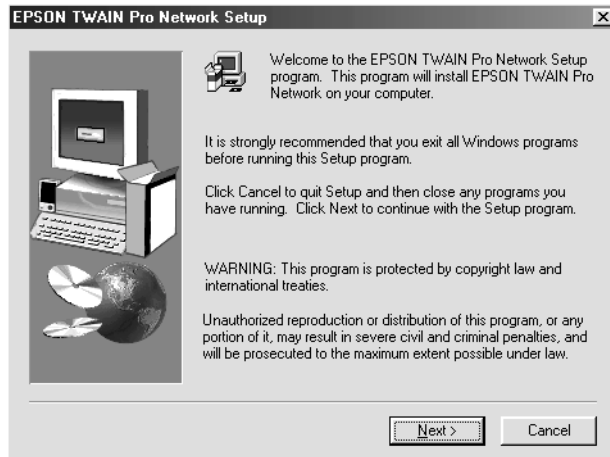
3. Click Add Software in the EPSON Software Setup dialog box.



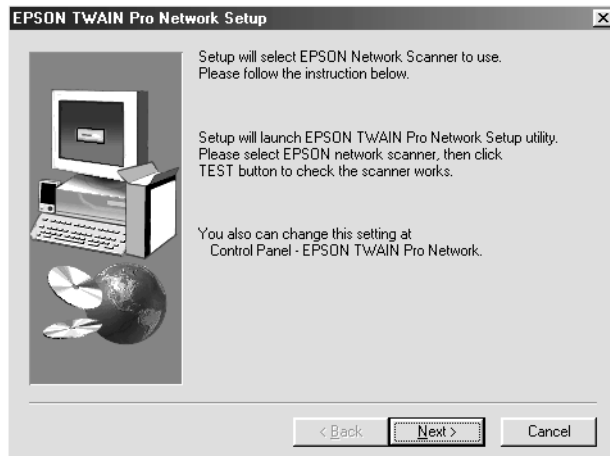
4. Select EPSON TWAIN Pro Network by checking at the left of the name in the EPSON Software Setup dialog box. A check mark will appear to indicate that EPSON TWAIN Pro Network is selected. You can also select other applications to be installed. Make sure to remove the check mark from application which is already installed on your PC.



5. Click OK to start the installation of selected applications.
6. Click Next.

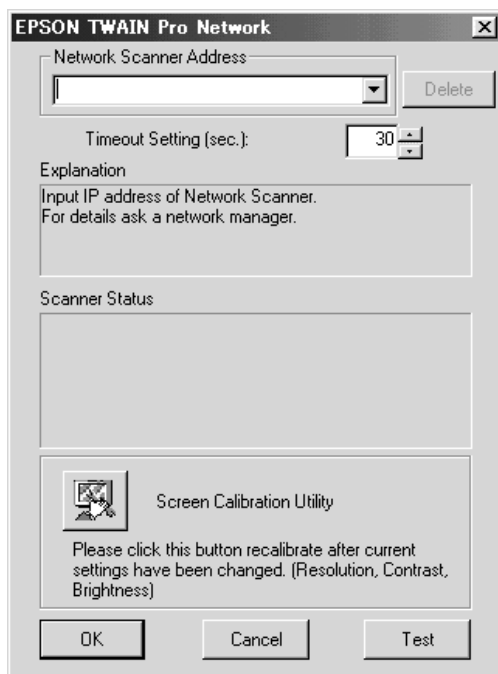


7. Click Next.





The EPSON TWAIN Pro Network setup dialog box appears.



**Note:**

To change the settings in the EPSON TWAIN Pro Network setup dialog box after the setup is already complete, click Start and point to Settings, then select Control Panel. Then double-click the EPSON TWAIN Pro Network icon.

8. Enter the IP address or Host name of the scanner server PC in the Network Scanner Address box.

**Note:**

- ❑ Host name can be used on networks that employ the DNS, WINS or LMHOSTS naming service.
- ❑ To delete the IP address or Host name, select it and then click Delete.

- Specify the Timeout Setting. Normally you do not need to change this value. Valid values range from 30 to 300 seconds.

For screen calibration, refer to the section “Calibrating Your Screen” described later in this chapter.

- To test the status of the scanner, click **Test**.

After the test is complete, information about the scanner's status is displayed below the heading **Scanner Status**.

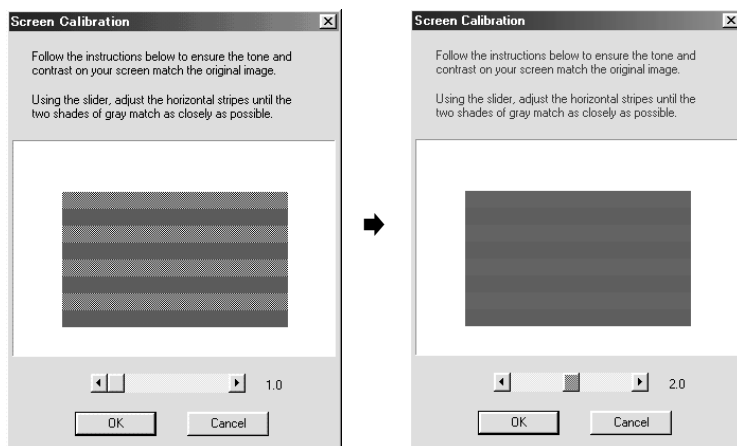
- After setting this dialog box, click **OK**.

The Screen Calibration dialog box appears.

- Click **Next**.



The Screen Calibration dialog box appears.



13. Move the slide bar right or left until the two shades of the gray horizontal stripes match and click OK. For details, refer to the next section "Calibrating Your Screen."
14. Click OK.



Installation of EPSON TWAIN Pro Network is complete.

---

## **Calibrating Your Screen**

You need to calibrate your screen so that scanned images will be reproduced on the screen as closely as possible to the original.

During the installation of EPSON TWAIN Pro Network software, the calibration utility automatically starts and you can calibrate your screen at that point.

To manually start the calibration utility, follow the instructions for your system below.

### ***For Windows 95 and NT 4.0 users:***

Click Start and point to Settings, then select Control Panel. Then double-click the EPSON TWAIN Pro Network icon and click the Calibration Utility button in the EPSON TWAIN Pro Network setup dialog box.

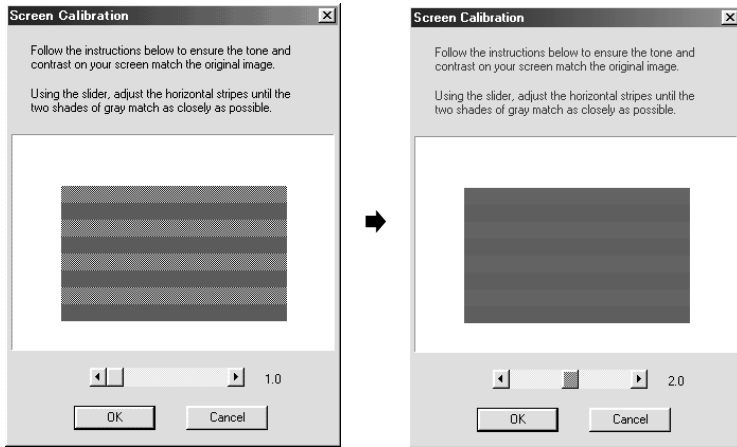
### ***For Windows 98 and 2000 users:***

Click Start and point to Settings, then select Control Panel. Then double-click the Scanners and Cameras icon. Select EPSON GT-10000 from the list when the Scanners and Cameras Properties dialog box appears, then click the Properties button. When the EPSON GT-10000 Properties dialog box appears, click the Utility tab and then the Screen Calibration Utility button.

### ***Calibrating your screen:***

To calibrate your screen follow the steps below:

1. Move the slider to the right or left until the two shades of the gray horizontal stripes match.



**Note:**

*View the screen from a short distance. While the gray stripes do not blend perfectly well, try to adjust until the different tones match as closely as possible.*

2. Click OK to register the calibration setting.

Screen calibration is not required any more until you change to a different monitor.

---

## **Network Scanning Basics**

Network Scanning Procedure .....	2-2
Starting EPSON Scan Server .....	2-2
Starting EPSON TWAIN Pro Network .....	2-3
Scanning an Image .....	2-5
Using the EPSON TWAIN Pro Network dialog box on the client PC.....	2-5
Using the Start button on the scanner.....	2-7
Using the Start button in the EPSON Scan Server dialog box .....	2-8
Getting Information from Online Help .....	2-10

---

## ***Network Scanning Procedure***

You need to perform the following procedures to use your EPSON scanner in a networked environment and to send scanned images to a client PC. Details are described below.

1. Start the EPSON Scan Server software and specify which EPSON scanner is to be used from the scanner server PC.
2. Specify the scanner server PC to be used by using the EPSON TWAIN Pro Network setup dialog box in the Control Panel on the client PC.
3. Start the TWAIN-compliant application and open EPSON TWAIN Pro Network from the application on the client PC.

This chapter describes the above procedures in detail.

---

## ***Starting EPSON Scan Server***

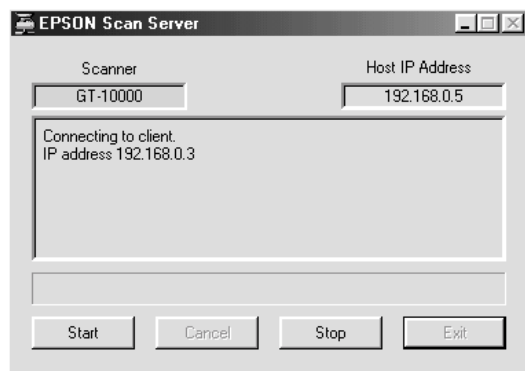
1. Turn on the scanner to be used for networked scanning.
2. Turn on the scanner server PC.

The Enter Network Password dialog box appears.

3. Enter your password for the network in the Password box and click OK.

Windows will automatically launch EPSON Scan Server and display the EPSON Scan Server dialog box or its icon on the Windows taskbar (if you have included the software in the Start up folder of Windows).

To manually start EPSON Scan Server, click Start and point to EPSON Scan Server, then select EPSON Scan Server.



**Note:**

- Make sure no other interface is used.
- To exit EPSON Scan Server, click Exit on the EPSON Scan Server dialog box. Make sure that no client is using the scanner before attempting to quit.

---

## Starting EPSON TWAIN Pro Network

**Note:**

Windows 2000 or NT 4.0 users who use the NTFS file system and do not have Administrator privileges need to have permission to modify the following folder and subfolder:

C:\WINNT\TWAIN\_32\EPFBPRON

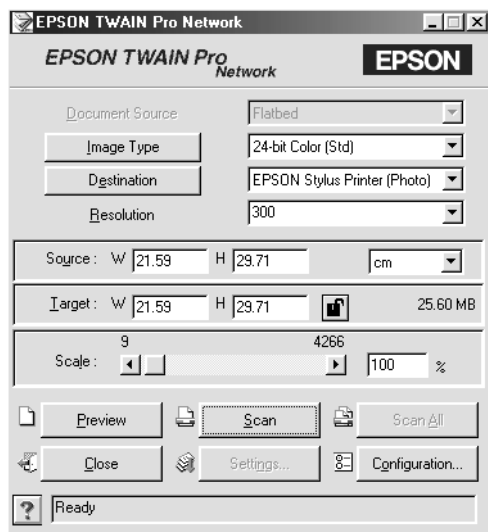
1. From the client PC, start the TWAIN-compliant application you want to use, such as Microsoft Imaging for Windows or Adobe Photoshop.

Refer to the User's manual of the application to check if the application supports TWAIN.



- From the TWAIN-compliant application's menu, select EPSON TWAIN Pro Network as the TWAIN data source and open EPSON TWAIN Pro Network using a command such as Acquire. The exact procedure depends on the application. Refer to the *Setup Guide* or documentation included with the application.

The EPSON TWAIN Pro Network dialog box appears.



- Select the appropriate scanning settings (Image Type or Resolution, etc.) for your purpose from this dialog box and click OK. For details on how to choose the correct settings, refer to “Understanding EPSON TWAIN Pro Features” in your *Online Reference Guide*.

---

## Scanning an Image

To use networked scanning, it is required that all of the devices (the EPSON scanner, the scanner server PC, and the client PC) are powered on and that EPSON Scan Server, the TWAIN-compliant application and EPSON TWAIN Pro Network are all started.

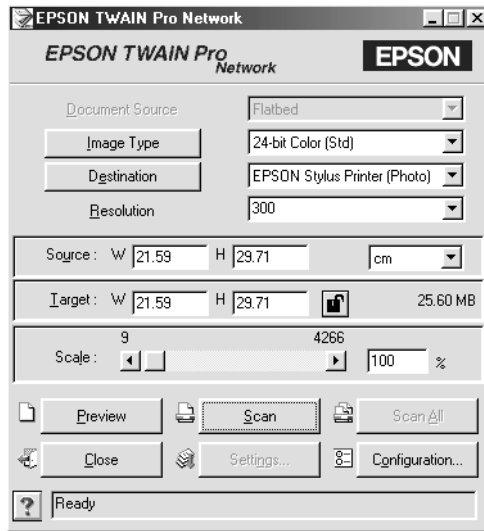
2

There are several ways to begin scanning a document. The basic method is to click the **Scan** button on the EPSON TWAIN Pro Network dialog box on the client PC. You can also start scanning by pushing the **Start** button on the EPSON scanner or by clicking the **Start** button on the EPSON Scan Server dialog box.

### ***Using the EPSON TWAIN Pro Network dialog box on the client PC***

1. Place the document on the document table, or a stack of documents in the Automatic Document Feeder.
2. Start EPSON TWAIN Pro Network from the TWAIN-compliant application and choose the appropriate settings for your document in the EPSON TWAIN Pro Network dialog box on the client PC. If you use the optional Automatic Document Feeder, remember to select the appropriate setting in the Document Source. If necessary, click **Preview** and check the scanned image in the Preview window.

3. Click Scan or Scan All in the EPSON TWAIN Pro Network dialog box. Scan All is available only if you have drawn more than one marquee in the Preview window.



Scanning starts and the Progress bar indicates how much of the document has been scanned.


**Note:**

- ❑ To cancel scanning, click Cancel on the Progress bar.
- ❑ When you are using the Automatic Document Feeder, do not open it until scanning is completed.

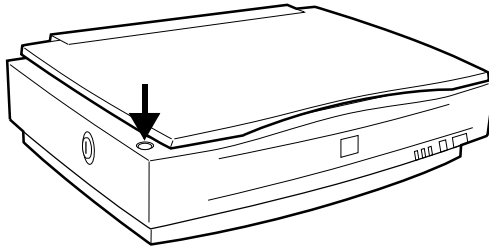
After the scanning is finished, the scanned image is displayed in the application.

4. Remember to remove the document(s) from the scanner.

## Using the Start button on the scanner

1. Start EPSON TWAIN Pro Network from the TWAIN-compliant application and choose the appropriate settings for your document in the EPSON TWAIN Pro Network dialog box on the client PC. If you use the optional Automatic Document Feeder, remember to select an appropriate setting in the Document Source.
2. Place the document on the document table, or a stack of documents in the Automatic Document Feeder.
3. Press the  Start button on the scanner.

Press the Start button



Scanning starts and the Progress bar indicates how much of the document has been scanned.


**Note:**

- To cancel scanning, click **Cancel** in the EPSON Scan Server dialog box on the scanner server PC, or **Cancel** on the Progress bar from the client PC.
- Clicking **Stop** in the EPSON Scan Server dialog box breaks the connection between the scanner server PC and the client PC, and exits EPSON TWAIN Pro Network on the client PC. To start scanning again, you will have to restart EPSON TWAIN Pro Network on the client PC.
- When you are using the Automatic Document Feeder, do not open it until scanning is completed.

4. After the scanning is finished, remember to remove the document(s) from the scanner.

When you return to the client PC, the scanned images will already be opened in the target application.

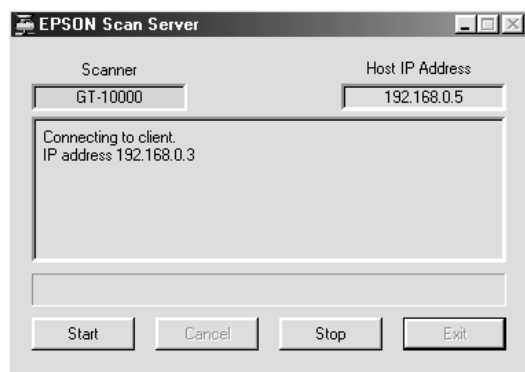
**Note:**

*When you are using EPSON Scanner Monitor (in Windows 95, Windows NT 4.0) or Scanner Events (in Windows 98, Windows 2000), starting EPSON Scan Server disables those functions, so pressing the  Start button does not activate those functions. After finishing EPSON Scan Server, you can then start EPSON Scanner Monitor.*

## **Using the Start button in the EPSON Scan Server dialog box**

1. Start EPSON TWAIN Pro Network from the TWAIN-compliant application and choose the appropriate settings for your document in the EPSON TWAIN Pro Network dialog box on the client PC. If you use the optional Automatic Document Feeder, remember to select an appropriate setting in the Document Source.
2. Place the document on the document table, or a stack of documents in the Automatic Document Feeder.

3. Click the Start button in the EPSON Scan Server dialog box.



Scanning starts and the Progress bar indicates how much of the document has been scanned.

**Note:**

- To cancel scanning, click **Cancel** in the EPSON Scan Server dialog box on the scanner server PC.
  - Clicking **Stop** in the EPSON Scan Server dialog box breaks the connection between the scanner server PC and the client PC, and exits EPSON TWAIN Pro Network on the client PC. To start scanning again, you will have to restart EPSON TWAIN Pro Network on the client PC.
  - When you are using the Automatic Document Feeder, do not open it until scanning is completed.
4. After the scanning is finished, remember to remove the document(s) from the scanner.

When you return to the client PC, the scanned images will already be opened in the target application.

---

## ***Getting Information from Online Help***

Online help is available from the dialog boxes of EPSON TWAIN Pro Network. The online help covers the scanning procedure, how to choose settings, and other topics.

To display the online help on the client PC, click the ? or Help button in the dialog box of EPSON TWAIN Pro Network. The Help for EPSON TWAIN Pro Network window appears.

## Chapter 3

---

# **Troubleshooting**

Problems and Solutions .....3-2

3



---

## Problems and Solutions

Most problems you will encounter while operating your scanner and software have simple solutions. Read the appropriate section to find the problem, then follow the recommended steps.

Refer also to the *Online Reference Guide* for solutions to problems with the appearance of the scanned image.

**Note:**

*If some settings appear dimmed in EPSON TWAIN Pro Network, they cannot be selected because of the capability of your scanner or your choice of other settings.*

If you cannot find the solution to your problem below, contact your dealer or a qualified customer support person for assistance.

<b>You cannot install EPSON TWAIN Pro Network and/or EPSON Scan Server.</b>
---

Cause	What to do
Incorrect system configuration	Check that both your computer and operating system match the system requirements on page 1-2.  Make sure your computer has enough memory (RAM) to run the application.

**For Windows 95 and NT 4.0:**

**The scanner does not appear in the Scanner Selection box in the EPSON Scan Server setup dialog box.**

**For Windows 98 and 2000:**

**Status: unavailable appears under the General tab of the EPSON GT-10000 Properties dialog box.**

Cause	What to do
Connection problem	Turn off the scanner and computer and check that they are connected properly.
Unavailable scanner	Make sure that a scanner supported by EPSON Scan Server and EPSON TWAIN Pro Network is connected to the scanner server PC.
SCSI ID number conflict	Change the scanner's SCSI ID number to one that is not being used by any other SCSI device.
Connection sequence problem	Check the connection sequence and make sure the scanner's terminator switch is set correctly. Refer to the <i>Setup Guide</i> that came with your scanner for details.
(Windows 98/2000) EPSON TWAIN Pro is not installed on the scanner server PC	Install EPSON TWAIN Pro (Version 1.75 or later) on the scanner server PC (the PC which is connected to the EPSON scanner).

### **You cannot start up EPSON Scan Server.**

<b>Cause</b>	<b>What to do</b>
Scanner is off	Turn on the scanner and then your computer.
Connection problem	Turn off the scanner and computer and check that they are connected properly.
Cable problem	Make sure the interface cable meets the requirements of your interface board. See the documentation that came with the interface board.
Interface board problem	Make sure the interface board is installed correctly.
Unavailable scanner	Make sure that a scanner supported by EPSON Scan Server and EPSON TWAIN Pro Network is connected to the scanner server PC.
(Windows 98/2000) EPSON TWAIN Pro is not installed on the scanner server PC	Install EPSON TWAIN Pro (version 1.75 or later) on the scanner server PC (the PC which is connected to the EPSON scanner).

### **You cannot select optional equipment for your scanner.**

<b>Cause</b>	<b>What to do</b>
Installation problem	Make sure the optional equipment is installed correctly. Refer to the documentation that came with the equipment for details.

**You cannot scan from the Automatic Document Feeder.**

<b>Cause</b>	<b>What to do</b>
The Document Source setting in EPSON TWAIN Pro Network is incorrect.	Make sure ADF-Single-sided or ADF-Double-sided is selected.
The Automatic Document Feeder is open.	Close the Automatic Document Feeder and try again. If the Automatic Document Feeder is opened while scanning, remove any jammed paper, and reload any document which has not yet been scanned and restart EPSON TWAIN Pro Network.
Paper is jammed.	Take the jammed paper out and reload the document, then restart EPSON TWAIN Pro Network.

**EPSON TWAIN Pro Network dialog box does not appear on the client PC when you try to start EPSON TWAIN Pro Network from a TWAIN-compliant application.**

<b>Cause</b>	<b>What to do</b>
Scanner and/or scanner server PC is off	Turn on the scanner and then the scanner server PC.
Connection problem	Make sure that TCP/IP is selected as the networking protocol. Refer to "Installing the TCP/IP Protocol" in the Appendix of this guide.
Network cable problem	Make sure that the cables which connect the EPSON scanner, the scanner server PC and the client PC meet system requirements and are properly connected.
Network interface card problem	Make sure the interface card is installed correctly.
IP address for the scanner server PC is not entered in the EPSON TWAIN Pro Network setup dialog box or incorrect IP address is entered.	Enter correct IP address in the EPSON TWAIN Pro Network setup dialog box.
Host name is entered instead of the IP address for the scanner server PC in the EPSON TWAIN Pro Network setup dialog box where no network naming service is available.	Make sure if the one of naming service such as DNS, WINS, or LMHOSTS is used in your network. Otherwise use IP address to specify the scanner server PC in the TWAIN Pro Network setup dialog box.

**Network connection is terminated before the scanned image is transferred to the client PC.**

Cause	What to do
Timed out	Check the time out setting and increase the value, if necessary. Refer to page 1-16 of this manual to change the time out setting.



---

## **Scanner Server PC Setup**

Setting up the Scanner Server PC .....	A-2
Installing the TCP/IP Protocol .....	A-2
Installing the TCP/IP protocol (Windows 98, 95) .....	A-2
Installing the TCP/IP protocol (Windows 2000) .....	A-6
Installing the TCP/IP protocol (Windows NT 4.0) .....	A-9
Setting the Scanner Server PC's IP Address .....	A-12
Assigning an IP address to a scanner server PC on Windows 98/95 .....	A-12
Assigning an IP address to a scanner server PC on Windows 2000 .....	A-15
Assigning an IP address to a scanner server PC on Windows NT 4.0 .....	A-17
Connecting the Scanner to the Scanner Server PC .....	A-18





---

## ***Setting up the Scanner Server PC***

To allow networking, the scanner server PC and the client PCs in the network require a Network Interface Card and a Network Interface Card (NIC) driver. Install the Network Interface Card and Network Interface Card (NIC) driver in the scanner server PC and the client PCs. For installation procedures, refer to the corresponding manuals included with the card.

---

## ***Installing the TCP/IP Protocol***

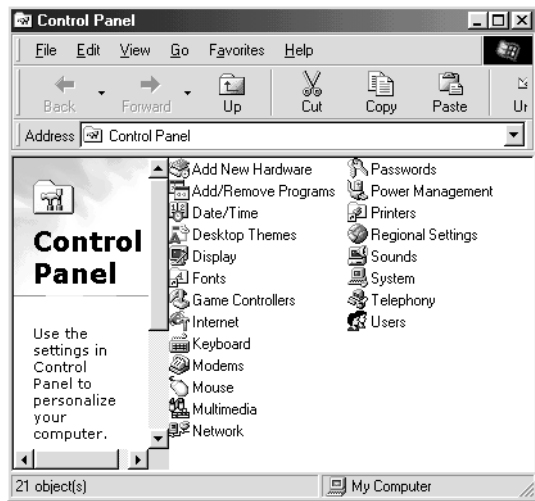
### ***Installing the TCP/IP protocol (Windows 98, 95)***

To install the TCP/IP protocol on the scanner server PC and client PCs in the network:

1. Click Start and point to Settings, then select Control Panel.

The Control Panel window appears.

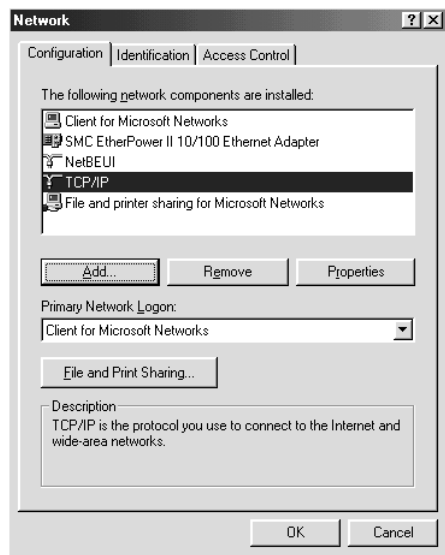
2. Double-click the Network icon in the Control Panel window.



The Network dialog box appears.

3. Click the Configuration tab to bring it to the top of the dialog box.

4. Check that TCP/IP protocol is included in the The following network components are installed: list box.

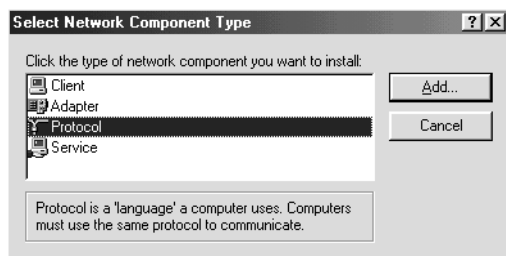


If the TCP/IP protocol appears in the list box, proceed to the following section “Setting the Scanner Server PC’s IP Address” on page A-12. Otherwise, proceed to step 5.

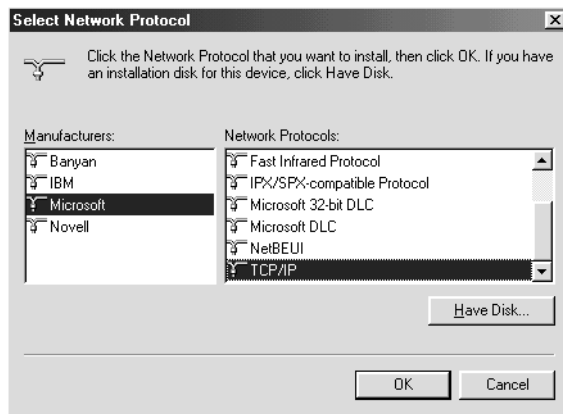
5. Click Add.

The Select Network Component Type dialog box appears.

6. Select Protocol from the list and click Add.



7. Select Microsoft from Manufacturers box and TCP/IP from Network Protocols, and click OK.



8. Follow the instructions displayed on the screen. After you finish this step, proceed to the section "Setting the Scanner Server PC's IP Address" on page A-12.



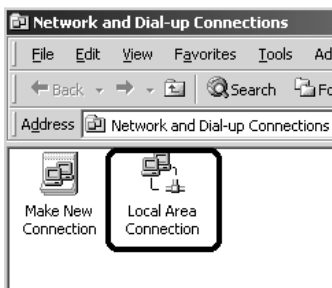
## Installing the TCP/IP protocol (Windows 2000)

To install the TCP/IP protocol on the scanner server PC and client PCs in the network:

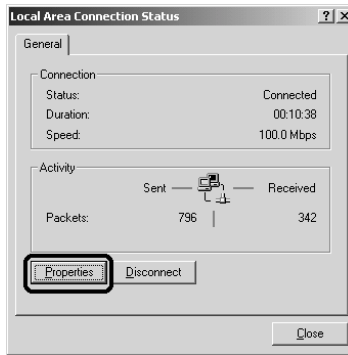
1. Right-click the My Network Places icon and select Properties.



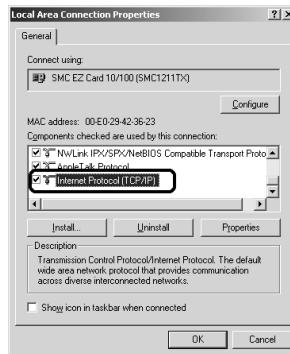
2. Double-click Local Area Connection.



3. Click Property.



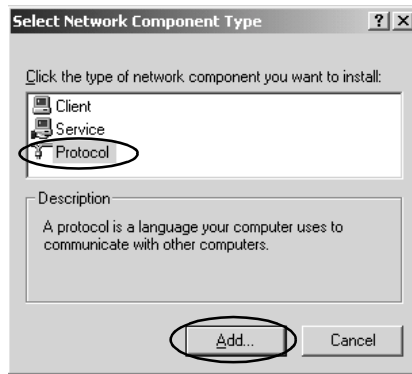
4. Check that Internet Protocol (TCP/IP) is included in the Local Area Connection Properties list box.



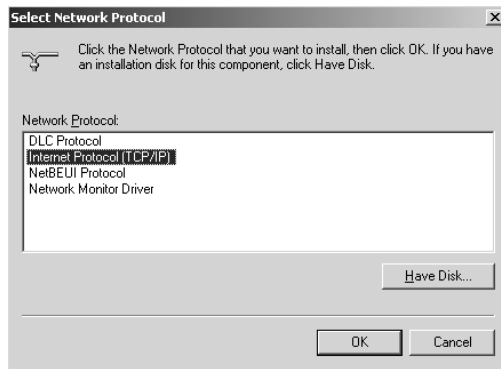
If the Internet Protocol (TCP/IP) appears in the list box, proceed to “Setting the Scanner Server PC’s IP Address” on page A-12. Otherwise, proceed to step 5.

5. Click Install. The Select Network Component Type box appears.

6. Select Protocol from the list and click Add.



7. Select Internet Protocol (TCP/IP) in the Network Protocol list box and click OK.



8. Check that Internet Protocol is installed and click Close. After you finish this setup, proceed to "Setting the Scanner Server PC's IP Address" on page A-12.

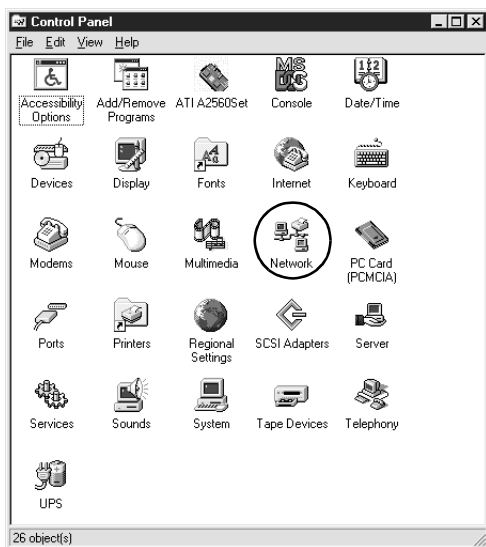
## Installing the TCP/IP protocol (Windows NT 4.0)

To install the TCP/IP protocol on the scanner server PC and client PCs in the network:

1. Click Start and point to Settings, then select Control Panel.

The Control Panel window appears.

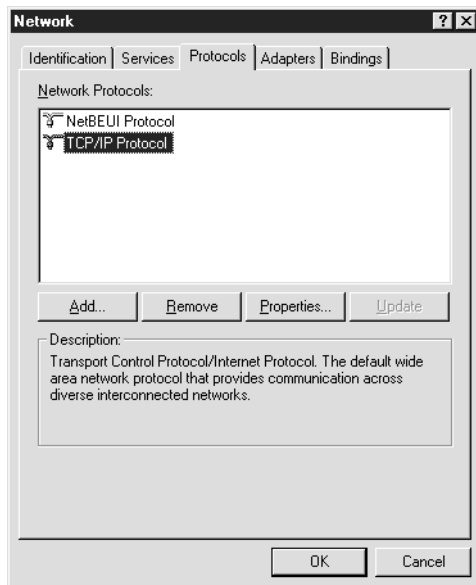
2. Double-click the Network icon in the Control Panel window.



3. Click the Protocols tab to bring it to the top of the dialog box.



4. Check that TCP/IP protocol is included in the Network Protocols: list box.

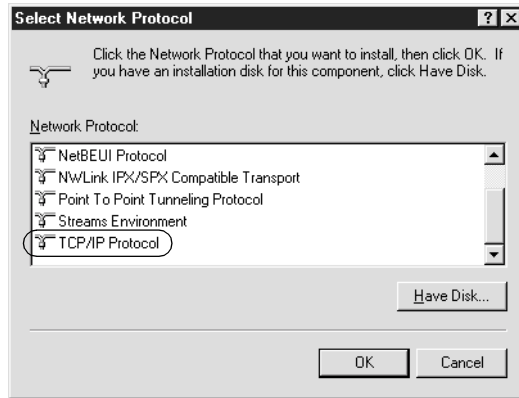


If TCP/IP already appears in the list box, proceed to the section “Setting the Scanner Server PC's IP Address” on page A-12. Otherwise, proceed to step 5.

5. Click Add.

The Select Network Protocol dialog box appears.

6. Select TCP/IP Protocol from the list and click OK.



7. Follow the instructions displayed on the screen. After you finish this step, proceed to the section "Setting the Scanner Server PC's IP Address" below.



---

## ***Setting the Scanner Server PC's IP Address***

To use EPSON scanners in a network environment, you need to assign IP addresses to the scanner server PC and client PCs.

If EPSON scanners are installed in an internal LAN (Local Area Network), that is, isolated from the Internet, the following IP addresses can be assigned to the scanner server PC.

***Note:***

*If you use IP addresses from these ranges, you will not be able to connect this LAN to the Internet in the future, otherwise there will be IP address conflicts.*

10.0.0.0 - 10.255.255.255

172.16.0.0 - 172.31.255.255

192.168.0.0 - 192.168.255.255

If you plan to use a scanner server PC in a network connected to the Internet, you should acquire a formal IP address for the scanner server PC from the Internet organization of your country.

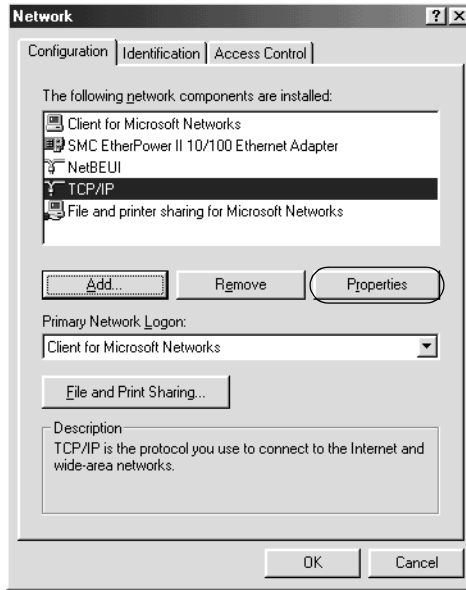
## ***Assigning an IP address to a scanner server PC on Windows 98/95***

1. Click Start and point to Setting, then select Control Panel and double-click the Network icon in the Control Panel window.

The Network dialog box appears with Configuration tab on the top.

2. Select TCP/IP in the list box and click Properties.

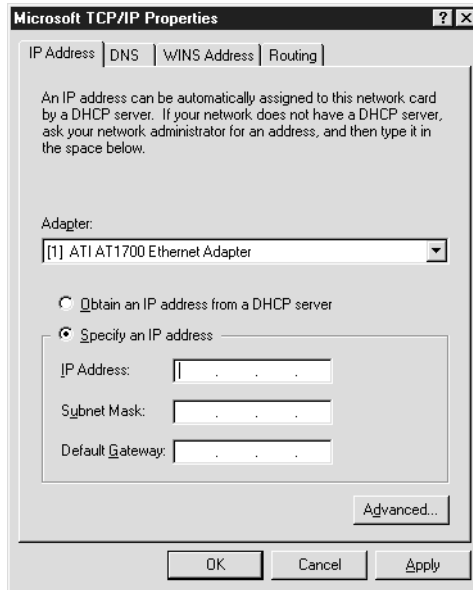
The TCP/IP Properties dialog box appears.



3. Click the IP Address tab.

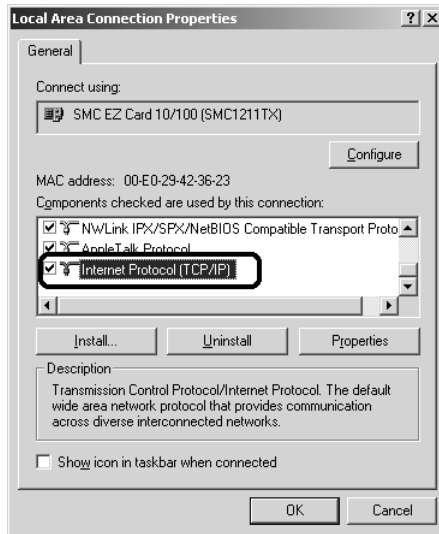
The IP Address dialog box appears on the top.

4. If you are using a DHCP server in your network, you can assign an IP address to your scanner server PC automatically by selecting Obtain an IP address automatically and clicking OK. To manually assign an IP address, select Specify IP address then enter the IP Address and Subnet Mask. Click OK.

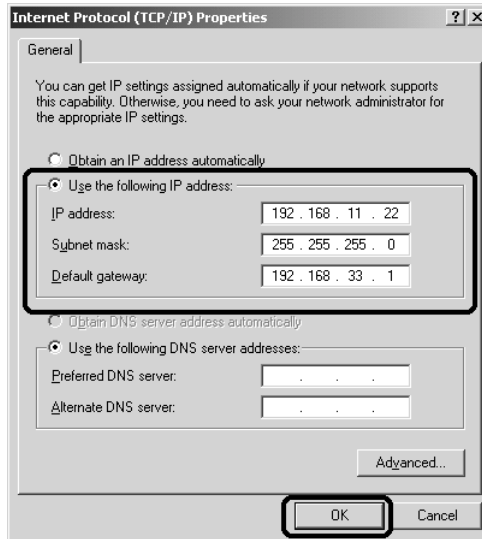


# Assigning an IP address to a scanner server PC on Windows 2000

1. Right-click the My Network Places icon, then select Properties and double-click Local Area Connection.
2. Click Property, and then double-click Internet Protocol (TCP/IP).
3. Make sure that Internet Protocol (TCP/IP) is included in the Local Area Connection Properties list box.



4. Select Use the following IP address, then enter the IP address. Click OK to close the dialog box.



**Note:**

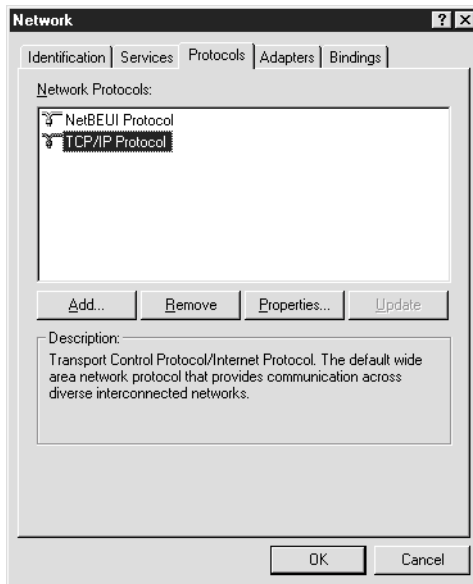
- ❑ *Make the settings appropriate for your network.*
  - ❑ *Confirm the IP address and other network settings with your network administrator.*
5. Click OK to close the Local Area Connection Properties dialog box, then click Close to close the Local Area Connection Status dialog box.

# Assigning an IP address to a scanner server PC on Windows NT 4.0

1. Click Start and point to Settings, then select Control Panel and double-click the Network icon in the Control Panel window.

The Network dialog box appears with the Identification tab on the top.

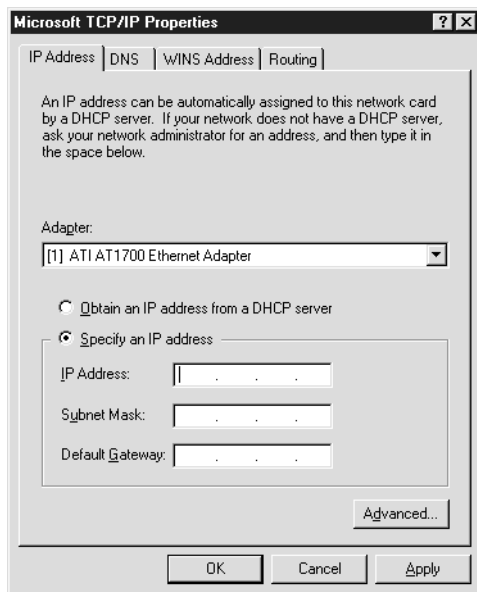
2. Click the Protocols tab.
3. Select TCP/IP Protocol in the list box and click Properties...



The Microsoft TCP/IP Properties dialog box appears.



4. If you are using a DHCP server in your network, you can assign an IP address to your scanner server PC by selecting Obtain an IP address from a DHCP server and clicking OK. To manually assign an IP address, select Specify an IP address then enter the IP Address, Subnet Mask and Default Gateway. Click OK.



---

## ***Connecting the Scanner to the Scanner Server PC***

Connect the EPSON scanner to your scanner server PC. Refer to the *Setup Guide* of your scanner for details.

---

# Glossary

***bit***

Short for binary digit. The smallest unit of data in computer processing. A bit can represent two values: on and off, or 1 and 0.

***bit/pixel***

The unit that indicates the number of bits allocated for a pixel. The larger the bit value, the more detail of a pixel will be reproduced.

***daisy chain***

A SCSI bus arrangement that allows several devices to be connected simultaneously in a line to a single computer. See SCSI.

***default***

A set of values used when no other selections have been made. These are sometimes called factory defaults if the original values have not been changed since the scanner left the factory.

***Default Gateway (Address)***

The IP address of a special device used to route data from one part of a network using TCP/IP to another. See also IP address, TCP/IP, and Internet.

***DHCP***

Dynamic Host Configuration Protocol, A TCP/IP network protocol that enables hosts to obtain temporary IP addresses from one or more centrally administered servers.

***DHCP server***

Dynamic Host Configuration Protocol server, A computer which has been configured to respond to DHCP requests from other computers on the network.

***DNS***

Domain Name System, a naming service which allows the looking up of IP addresses based on host (domain) names.

***document***

The item, such as a sheet of paper or a book, that is placed on the document table for the scanner to read.

***dpi***

Short for dots per inch. A unit of measurement for resolution. The higher the value, the higher the resolution.

***interface***

A piece of hardware, a method, or a standard used for connection between or among computer devices.

**Internet**

A worldwide network of computers and communication devices, the largest of its kind, originally conceived as a research project of the US government. The Internet is composed of many different types of connections, including electrical and fiber optic cabling as well as wireless communications.

**IP address**

Internet Protocol address, A numeric address which uniquely identifies a computer connected to a network using TCP/IP, such as the Internet. See also Internet and TCP/IP.

**Network Interface Card**

A name for the adapter (printed circuit board), installed in a PC, that enables it to communicate over a LAN.

**LAN**

Short for Local Area Network, a computer network in which the attached devices are in close proximity (like in the same office or building).

**LMHOSTS**

A file of IP addresses and their associated host (domain) names. An IP address and its associated host (domain) name can be found by referring to this file.

**port**

An interface channel through which data is transmitted between devices.

**scan**

An operation performed by the sensor and the carriage. The image is divided into pixels by scanning.

**scanning area**

The physical size of the image that can be scanned by the scanner.

**screen calibration**

Adjustment of the monitor display to reproduce as closely as possible the original image data.

**SCSI**

Small Computer System Interface. This is one method used to connect your computer to peripherals such as scanners, hard disk drives, CD-ROM drives, and others.

**SCSI ID**

The numbers that all devices in a SCSI connection (see daisy chain) use to identify each other. If the same ID number is used by two devices in the same daisy chain, the devices cannot operate properly.

**Subnet mask**

A numeric designation, with the same format as an IP address, which determines how much of an IP address is used to partition a network using TCP/IP into smaller entities called subnets. See also IP address, TCP/IP, and Internet.

**TCP/IP**

A widely used family of protocols for communicating data between computers in a network.

**WINS**

Windows Internet Naming Service, a naming service which allows the looking up of IP addresses based on host (domain) names.



---

# Index

## Symbols

.inf file, 1-3

## A

assigning an IP address to a scanner  
server PC  
Windows 2000, A-15  
Windows 95, A-12  
Windows 98, A-12  
Windows NT 4.0, A-17

## C

calibrating  
screen, 1-19  
cancel  
scanning, 2-6  
Cdsetup.exe, 1-3  
client PCs, 1

## D

definition  
scanner server PC, 1  
deleting host name, 1-16  
deleting IP address, 1-16

## E

entering host name, 1-16  
entering IP address, 1-16  
EPSON Scanner Software CD, 1-3, 1-13  
EPSON Scan Server  
dialog box, 1-8  
features, 1  
icon, 1-8  
installing, 1-3  
starting, 2-2  
EPSON TWAIN Pro Network  
dialog box, 2-4

features, 1  
installing, 1-13  
starting, 2-3

Ethernet, 1-2

## F

features  
EPSON Scan Server, 1  
EPSON TWAIN Pro Network, 1

## G

glossary, 1

## H

hardware interface  
for networking, 1-2  
for scanner, 1-2  
Help button, 2-10

## I

installing  
EPSON Scan Server, 1-3  
EPSON TWAIN Pro Network, 1-13  
installing the TCP/IP protocol  
Windows 2000, A-6  
Windows 95, A-2  
Windows 98, A-2  
Windows NT 4.0, A-9  
Internet, A-12  
IP address, A-12

## L

LAN, A-12

## N

networked environment, 2

## O

online help, 2-10  
Online Reference Guide, 4

## P

Preview window, 2-6  
problems and solutions, 3-2

## R

references, 4

## S

scanner models, 1-2  
scanner server PC  
    definition, 1  
    setting up, A-2  
scanner to be used  
    selecting, 1-7  
scanning, 2-5  
    cancel, 2-6  
screen, calibrating, 1-19  
selecting  
    language, 1-3, 1-13  
    scanner to be used, 1-7  
    startup mode, 1-8  
setting the Scanner Server PC's IP  
    address, A-12  
setting up  
    scanner server PC, A-2  
specifying  
    timeout setting, 1-17  
Start button  
    in the EPSON Scan Server dialog  
        box, 2-8  
    on the scanner, 2-7  
starting  
    EPSON Scan Server, 2-2  
    EPSON TWAIN Pro Network, 2-3  
startup mode  
    selecting, 1-8  
system requirements, 1-2

## T

TCP/IP protocol, A-2  
testing the status of the scanner, 1-8  
timeout setting  
    specifying, 1-17  
Troubleshooting, 3-1  
TWAIN-compliant application, 2-2

## U

using the EPSON TWAIN Pro  
    Network dialog box on the client  
        PC, 2-5  
using the Start button in the EPSON  
    Scan Server dialog box, 2-8  
using the Start button on the scanner,  
    2-7

## W

Windows 2000  
    assigning IP address to a scanner  
        server PC, A-15  
    installing the TCP/IP protocol, A-6  
Windows 95  
    assigning an IP address to a  
        scanner server PC, A-12  
    installing the TCP/IP protocol, A-2  
Windows 98  
    assigning an IP address to a  
        scanner server PC, A-12  
    installing the TCP/IP protocol, A-2  
Windows NT 4.0  
    assigning IP address to a scanner  
        server PC, A-17  
    installing the TCP/IP protocol, A-9

**EPSON**

**EPSON Scan Server  
EPSON TWAIN Pro Network**

***User's Guide***

Printed in XXXXX  
XX.XX-X