



DS-40

Network Guide

NPD5022-00 EN

Contents

Introduction

Notices.	3
About this manual.	3
Caution, Important and Note.	3
Operating System Versions.	3
Wi-Fi (Wireless) Network Basics.	4
Infrastructure mode (To communicate through the access point).	4
Direct connection (To communicate without using an access point).	5

Using Product via Network

Setup the Product from Network Devices.	6
Windows.	6
Mac OS X.	7
Smartphone or tablet.	7
Setting up the Infrastructure Connection Manually.	7
Wi-Fi Protected Setup (WPS).	7
Using EpsonNet Config.	11
Direct Wi-Fi Connection.	14
Using WPS push button for direct Wi-Fi connection.	15
Configuring Scanning Software on Your Computer	17
Setting up the scanner driver.	17
Checking the product's IP address.	19

Troubleshooting

Tips for Solving Network Problems.	21
Checking product settings.	21
Updating product firmware.	21
Initializing the product.	22
Checking the communication using the Ping command.	23
Setup Problems.	24
Connecting to Wi-Fi.	24
Connecting with direct Wi-Fi connection.	25
Scanning Problems.	26
Connecting to Wi-Fi.	26
Software Problems.	27
Unblocking Epson software.	27

Copyrights and Licenses for Network Features

Copyrights, Trademarks, and Licenses.	28
Info-ZIP copyright and license.	28
OPEN SOURCE SOFTWARE LICENSE.	29

Introduction

Notices

About this manual

This Network Guide provides instructions on wireless network settings for your computer, smartphone, or product, as well as how to solve problems.

The contents of this manual and the product's specifications are subject to change without notice.

Caution, Important and Note

Caution, Important, and Note in this manual are indicated as below and have the following meaning.

**Caution**

must be followed carefully to avoid bodily injury.

**Important**

must be observed to avoid damage to your equipment.

Note

contain useful tips and restrictions on product operation.

Operating System Versions

In this manual, the following abbreviations are used.

- Windows 8.1 refers to Windows 8.1 and Windows 8.1 Pro.
- Windows 8 refers to Windows 8 and Windows 8 Pro.
- Windows 7 refers to Windows 7 Home Basic, Windows 7 Home Premium, Windows 7 Professional, and Windows 7 Ultimate.
- Windows Vista refers to Windows Vista Home Basic Edition, Windows Vista Home Premium Edition, Windows Vista Business Edition, Windows Vista Enterprise Edition, and Windows Vista Ultimate Edition.
- Windows XP refers to Windows XP Home Edition, Windows XP Professional x64 Edition, and Windows XP Professional.
- Mac OS X v10.9.x refers to OS X Mavericks and Mac OS X v10.8.x refers to OS X Mountain Lion. Additionally, Mac OS X refers to Mac OS X v10.9.x, Mac OS X v10.8.x, Mac OS X v10.7.x, Mac OS X v10.6.x, and Mac OS X v10.5.8.

Introduction

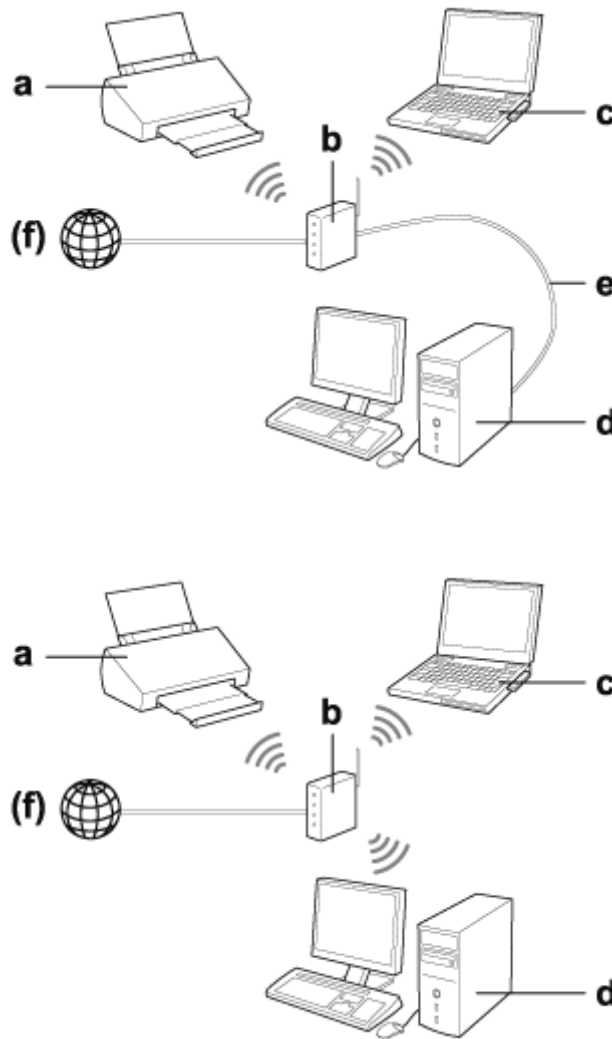
- ❑ iOS refers to iOS 5.x, iOS 6.x, and iOS 7.x.
- ❑ Android refers to Android 4.0.x, Android 4.1.x, Android 4.2.x, Android 4.3.x, and Android 4.4.x.

Wi-Fi (Wireless) Network Basics

There are two types of Wi-Fi connection; Infrastructure mode (to communicate through the access point) and direct Wi-Fi connection (to communicate directly with devices without using an access point).

Infrastructure mode (To communicate through the access point)

In the Infrastructure mode, both wireless and wired computers can communicate through an access point (such as wireless router) to send data to the network interface.



- a. Product
- b. Wireless router (or access point)

Introduction

- c. Computer with Wi-Fi interface (built-in or added via USB/PC card and so on)
- d. Computer with LAN port or Wi-Fi interface
- e. Ethernet cable (if you connect the computer and the wireless router directly)
- (f. Internet access)

Direct connection (To communicate without using an access point)

To use the product in a wireless environment without an access point is to use a direct Wi-Fi connection.

You can connect the product wirelessly without using an access point.

For more details, see [“Direct Wi-Fi Connection”](#) on page 14.



a. Product

b. Computer (with a Wi-Fi interface) or a Wi-Fi device

Using Product via Network

Setup the Product from Network Devices

This section describes how to operate your product from network devices running Windows, Mac OS X, iOS, and Android. The following outlines the recommended network settings for each device.

- ❑ Windows: Using the software disc or installer from the Epson Web site.
- ❑ Mac OS X: Using EpsonNet Setup from the Epson Web site.
- ❑ iOS and Android: Using the Epson DocumentScan application.

See the following sections for more details on each operating system.

Windows

Setting up using the product's software disc

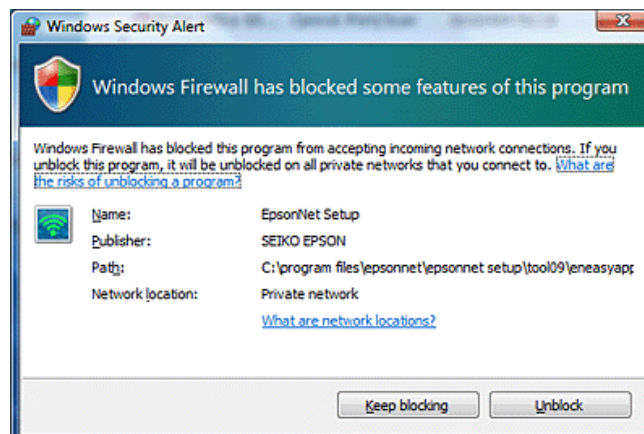
To use your product from a Windows computer, set up using the product's software disc. You can also use the software disc if you want to use the product from a second computer or change the product from a USB connection to a network connection.

If your computer does not have a CD/DVD drive, you can download the installer from the following Epson web site.

<http://support.epson.net/setupnavi/>

Note:

- ❑ Before beginning setup for a computer, check that your network devices such as the router, wireless adapter, or hub are working properly.
- ❑ If the security alert screen for your OS or the application appears, click **Unblock** or **Allow** to create a Firewall exception. Do not click **Keep Blocking**, **Block**, or similar command on commercially available security software screen. Depending on the commercially available security software used, the above procedure may not establish a connection. In this case, temporarily exit the security software and then use the product's software.



Using Product via Network

- 1 Insert the software disc into the CD-ROM/DVD drive.

Note:

If the installation screen does not automatically appear in Windows, double-click the Disk icon in **Computer** (or **My Computer**).

- 2 Follow the on-screen instructions.

Mac OS X

For Mac OS X, download the software from the Epson Web site.

Note:

Check that your network devices, such as the router or wireless adapter, are working properly before starting computer setup.

Go to the following Epson web site and follow the on-screen instructions to set up the product and a network connection.

<http://support.epson.net/setupnavi/>

Smartphone or tablet

For iOS or Android smartphones or tablets, use the Epson DocumentScan application.

Epson DocumentScan allows you to wirelessly scan to your product from your smartphone or tablet.

For more information, search for **Epson DocumentScan** in the App Store or in Google Play to find the application.

Setting up the Infrastructure Connection Manually

Follow the steps below to manually setup the product's infrastructure Wi-Fi connection.

Note:

Check that your Wi-Fi network is enabled before connecting to the product.

Wi-Fi Protected Setup (WPS)

There are two types of Wi-Fi Protected Setup (WPS); the WPS push button method, and the WPS PIN code method.

Note:

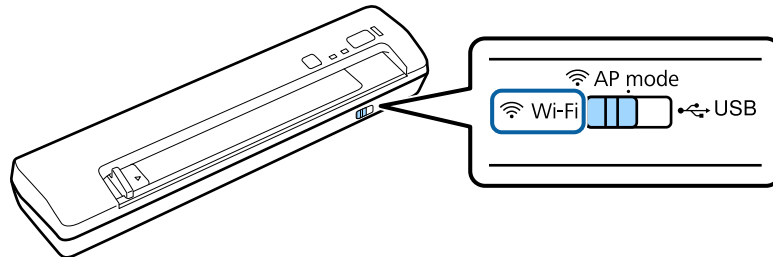
- Before connecting the product to the network, check that the access point supports the WPS function.
- For details on the access point WPS function or troubleshooting, see the access point's user's guide.

Using Product via Network

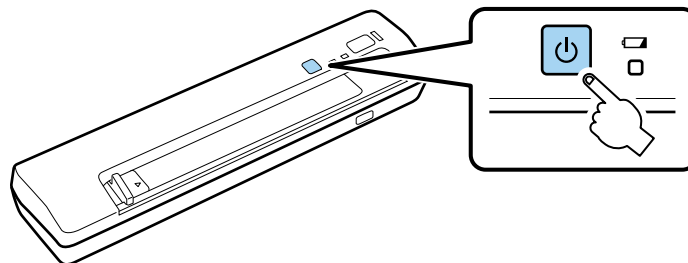
WPS push button

You can setup by pushing the WPS button on a wireless router (access point). Use this method if you have already connected other Wi-Fi enabled devices using WPS.

- 1 Set the connection mode switch on the product to **Wi-Fi**.



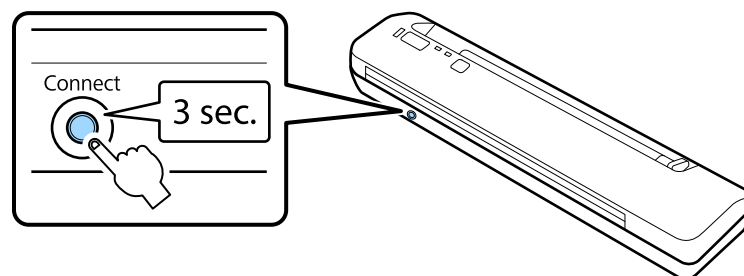
- 2 Turn on the product.



Note:

You need to wait until the Wi-Fi light stays on, and then go to the next step.

- 3 Hold down the **Connect** button on the product for at least three seconds, until the Ready and Wi-Fi lights on the product flash alternately.



- 4 Press the Wi-Fi Protected Setup (WPS) button on the wireless router (access point).

Note:

If the wireless router (access point) does not have a WPS button, you can enable WPS using the software supplied with your wireless router (access point). For more details, see the documentation supplied with the wireless router (access point).

When the Ready and Wi-Fi lights on the product stay on, the connection has been established. It may take a few minutes.

Using Product via Network

To scan you need to configure the scanning software on your computer.

➔ “Configuring Scanning Software on Your Computer” on page 17

Note:

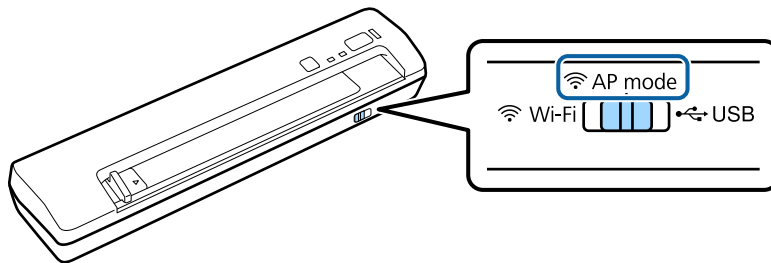
See the following section if Wi-Fi setup fails.

➔ “Cannot connect to access point” on page 24

WPS PIN code

To perform the setup, enter eight numbers (PIN code) into the wireless router (access point). The PIN code for the product is **01234565**.

- 1 Set the connection mode switch on the product to **AP mode**.

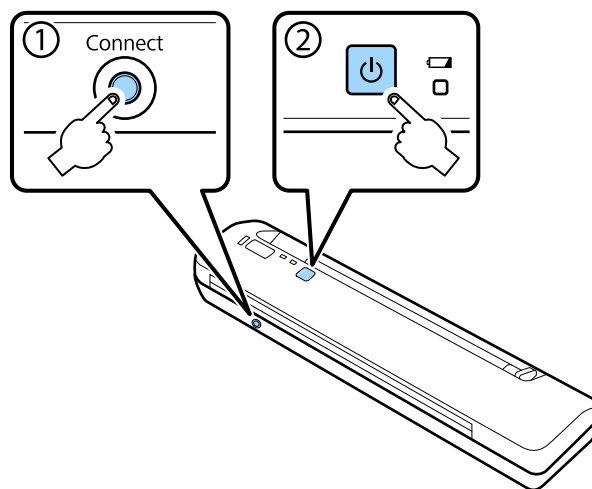


Note:

Even though the WPS PIN code method sets up the product for an infrastructure network, you need to set the connection mode switch to **AP mode** in this step.

- 2 Hold down the **Connect** button on the product and turn it on.

Continue holding down the **Connect** button until the Ready and Wi-Fi lights on the product periodically flash alternately.



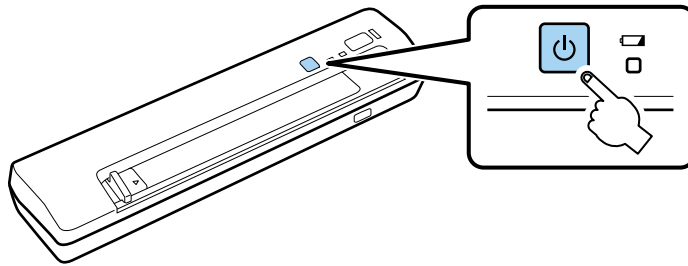
Using Product via Network

- 3 Enter the PIN code (01234565) into the wireless router (access point).

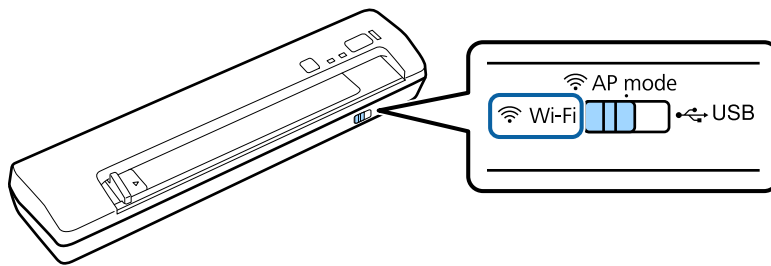
Note:
See the documentation supplied with the wireless router (access point) for more information on entering the PIN code.

When the Ready and Wi-Fi lights on the product stay on, Wi-Fi setup for the product is complete.

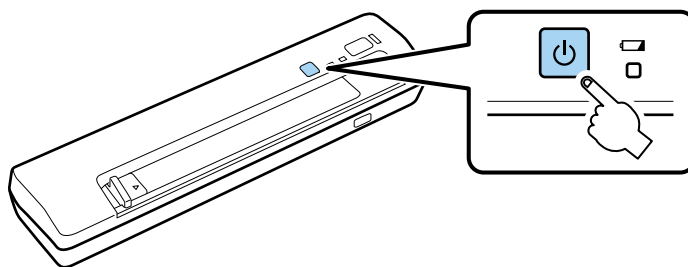
- 4 Turn off the product.



- 5 Set the connection mode switch on the product to Wi-Fi.



- 6 Turn on the product.



When the Ready and Wi-Fi lights on the product stay on, the connection has been established.

To scan you need to configure the scanning software on your computer.

➔ [“Configuring Scanning Software on Your Computer” on page 17](#)

Note:
See the following section if Wi-Fi setup fails.
➔ [“Cannot connect to access point” on page 24](#)

Using Product via Network

Using EpsonNet Config

You can use EpsonNet Config to connect the product to a Wi-Fi network using infrastructure mode.

Connect the product to your computer using a direct Wi-Fi connection to register the infrastructure network settings on the scanner. Next, reboot the scanner in infrastructure connection mode to connect it to your infrastructure network.

Note:

If you are using iOS or Android devices, you can use Epson DocumentScan to connect the product using infrastructure mode. See the following section for more information on Epson DocumentScan.

➔ *“Smartphone or tablet” on page 7*

Check the following settings before you start.

- EpsonNet Config is installed on your computer.
If it is not installed, install it from the software disc or download it from the following web site.
<http://support.epson.net/setupnavi/>
- The product and your computer are turned on and connected with a direct Wi-Fi connection.
➔ *“Direct Wi-Fi Connection” on page 14*

1

Start EpsonNet Config on your computer.

Windows 8.1/Windows 8:

Start screen > **Apps** > **EpsonNet** > **EpsonNet Config**

Windows 7/Windows Vista/Windows XP:

Start > **All Programs** or **Programs** > **EpsonNet** > **EpsonNet Config VX*** > **EpsonNet Config**

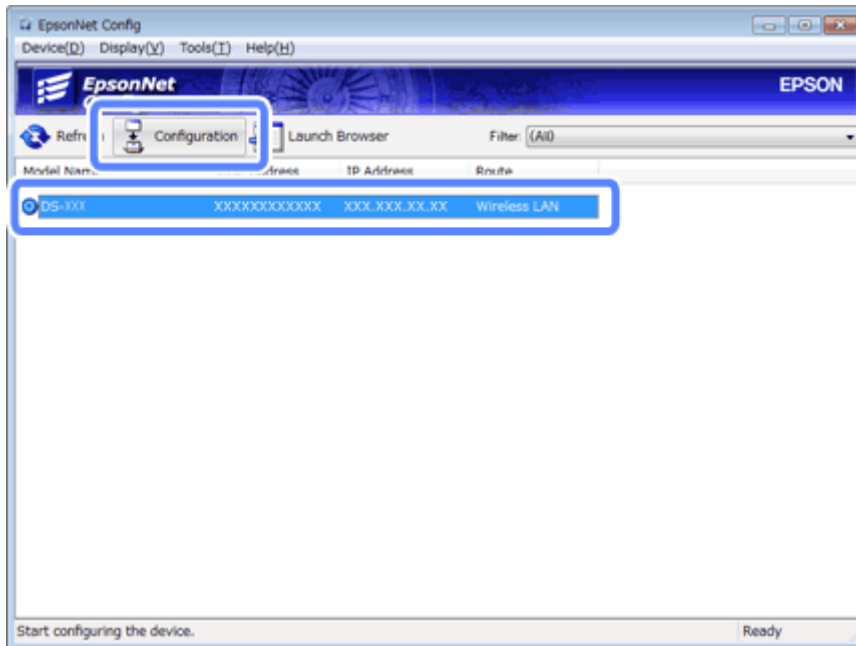
Mac OS X:

Select **Applications** > **Epson Software** > **EpsonNet** > **EpsonNet Config VX*** > **EpsonNet Config**.

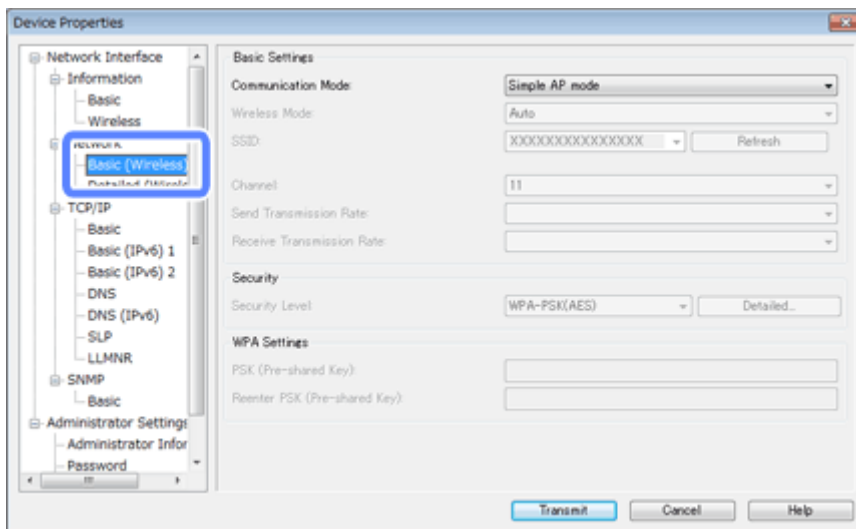
* Where "X" is the software version.

Using Product via Network

- 2 Select your product from the list, and then click **Configuration**.

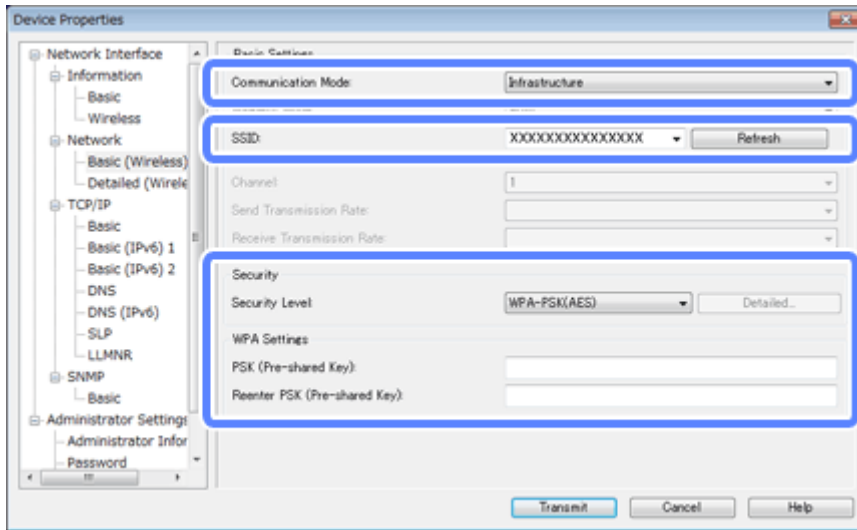


- 3 Select **Network Interface - Network - Basic (Wireless)**.



Using Product via Network

- 4 Make the necessary settings for your infrastructure connection.



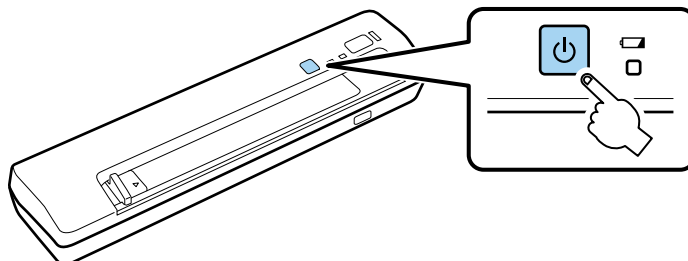
Item	Setting
Communication mode	Set to Infrastructure .
SSID	Set the SSID of the wireless router (access point) you want to connect to.
Security level	Set the security level of your wireless connection.
WEP Settings WPA Settings	Set the security key of your wireless connection.

Make additional settings if necessary.

Note:

If you do not know the security settings for the wireless router (access point), see the documentation supplied with the wireless router (access point) or contact your network administrator.

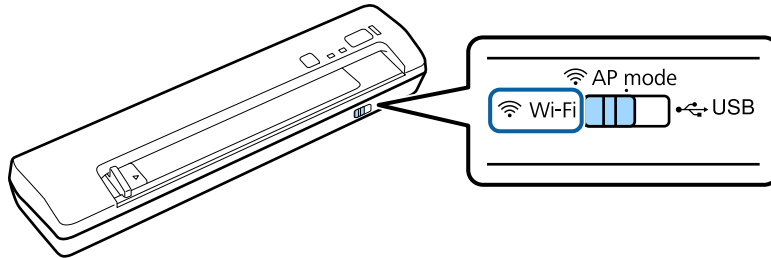
- 5 Click **Transmit**.
- 6 Quit EpsonNet Config.
Click **Device**, and then click **Quit**.
- 7 Turn off the product.



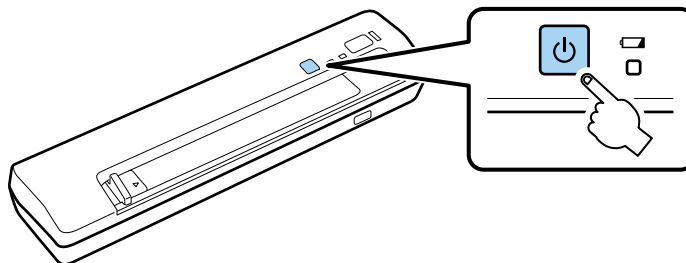
Using Product via Network

8 Connect your computer to your infrastructure network.

9 Set the connection mode switch on the product to **Wi-Fi**.



10 Turn on the product.



When the Ready and Wi-Fi lights on the product stay on, the connection has been established.

To scan you need to configure the scanning software on your computer.

➔ [“Configuring Scanning Software on Your Computer” on page 17](#)

Note:

See the following section if Wi-Fi setup fails.

➔ [“Cannot connect to access point” on page 24](#)

Direct Wi-Fi Connection

You can connect the product directly to devices that have a Wi-Fi function without using a wireless router (access point). The product acts as an access point; this connection method is known as "access point mode".

Note:

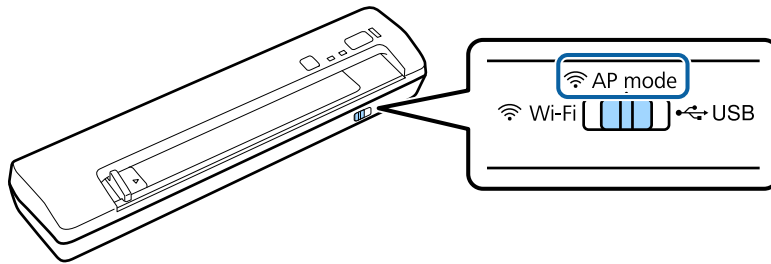
- This connection mode does not support Windows 8.1/Windows 8.
- When using a direct Wi-Fi connection, your computer's Internet access could be disabled.

The connection specifications are as follows:

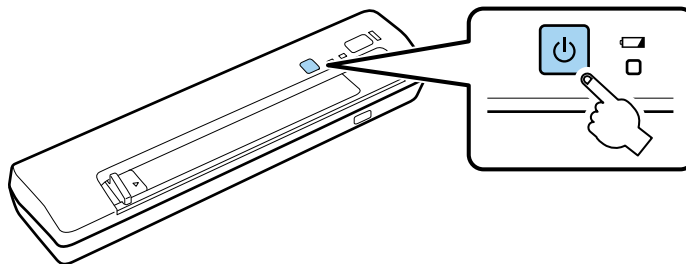
- Number of concurrent connections: 4
- Security: WPA2-PSK (AES)
- Standard: 802.11b/g

Using Product via Network

- 1 Set the connection mode switch on the product to **AP mode**.



- 2 Turn on the product.



Note:

You need to wait until the Ready and Wi-Fi lights stay on, and then go to the next step.

- 3 From your computer or device, search for and select the SSID shown on the label on the bottom of the product.
- 4 Enter the password shown on the label on the bottom of the product into the Wi-Fi settings on your computer or device.

To scan you need to configure the scanning software on your computer.

➔ [“Configuring Scanning Software on Your Computer” on page 17](#)

Note:

See the following section if Wi-Fi setup fails.

➔ [“Cannot connect to access point” on page 24](#)

Using WPS push button for direct Wi-Fi connection

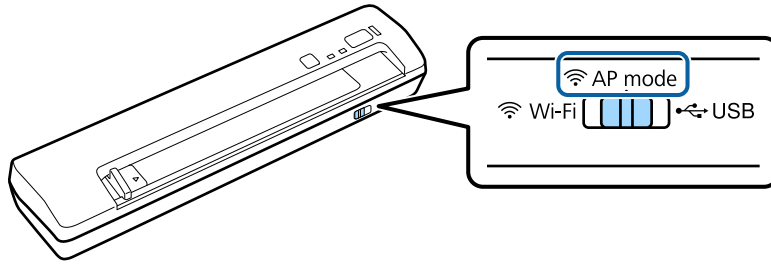
You can setup a direct connection by pushing the WPS push button or by using the WPS function if your device supports this method.

Note:

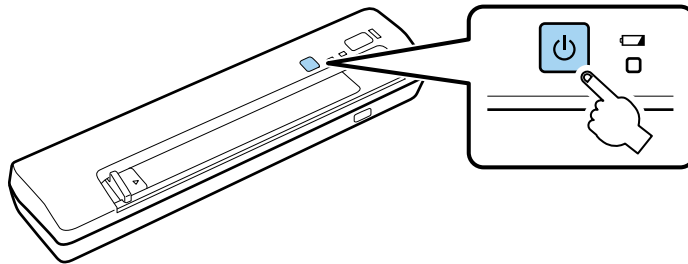
- ❑ Before connecting the product to the network, check that your device supports the WPS function.
- ❑ See the documentation supplied with your device for more information on the access point WPS function or troubleshooting.

Using Product via Network

- 1 Set the connection mode switch on the product to **AP mode**.

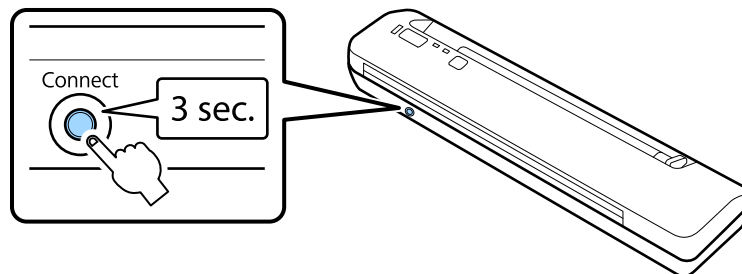


- 2 Turn on the product and wait until the Wi-Fi and Ready lights stay on.



- 3 Hold down the **Connect** button on the product for at least three seconds until the Ready and Wi-Fi lights on the product flash alternately.

The product enters standby status for WPS connection for two minutes, and the Ready and Wi-Fi lights stay on.



- 4 On the device you want to connect the product to, press the WPS button or start the WPS function.

Note:
 You need to finish this step within approximately two minutes. Otherwise, the standby status for WPS connection is cancelled.

Check whether or not connection has been established correctly on your computer or device.

To scan you need to configure the scanning software on your computer.

➔ [“Configuring Scanning Software on Your Computer” on page 17](#)

Note:
 See the following section if Wi-Fi setup fails.
 ➔ [“Cannot connect to access point” on page 24](#)

Configuring Scanning Software on Your Computer

If you are setting up the product without the CD installer, you need to configure scanning software on your computer. Register the product's IP address in the scanner driver.

Setting up the scanner driver

This section describes how to setup scanning software on your computer.

Check the following settings before you start.

- Epson Scan is installed on your computer.
If it is not installed, install it from the software disc or download it from the following web site.
<http://support.epson.net/setupnavi/>
- You have the IP address of the product you want to use if there are multiple scanners in your network. See the following section for information on how to check the IP address.
➔ [“Checking the product's IP address” on page 19](#)
- Your product is turned on and connected to a wireless network.

Note for Windows:

Log in as a user with administrator's authority, and then install. If you are asked to enter an administrator's password, enter the password, and then continue with the operations.

Note for Mac OS X:

- Do not use the Fast User Switching function while using your scanner.
- You must log on to a Computer Administrator account.

1 Start Epson Scan Settings.

Windows 8.1/Windows 8:

Start screen > **Apps** > **Epson** > **Epson Scan Settings**

Windows 7/Windows Vista/Windows XP:

Start > **All Programs** or **Programs** > **EPSON** > **EPSON Scan** > **EPSON Scan Settings**

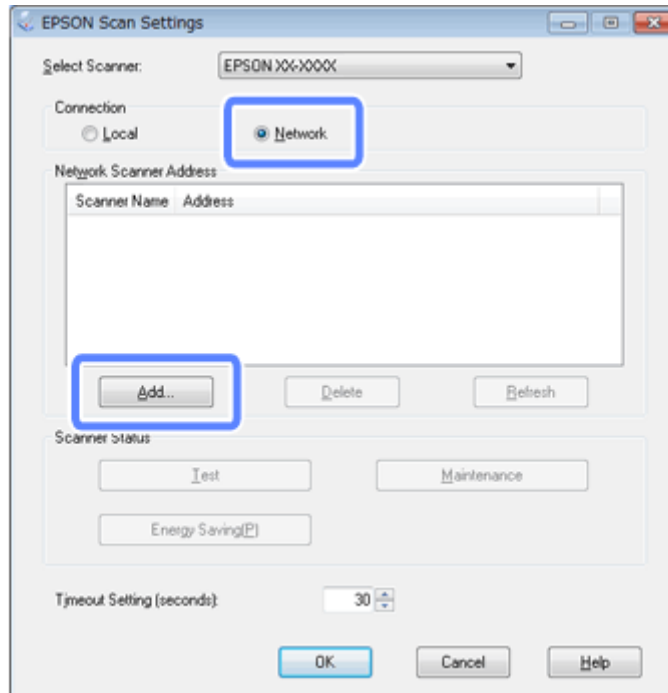
Mac OS X:

Select **Applications** > **EPSON Software** > **EPSON Scan Settings**.

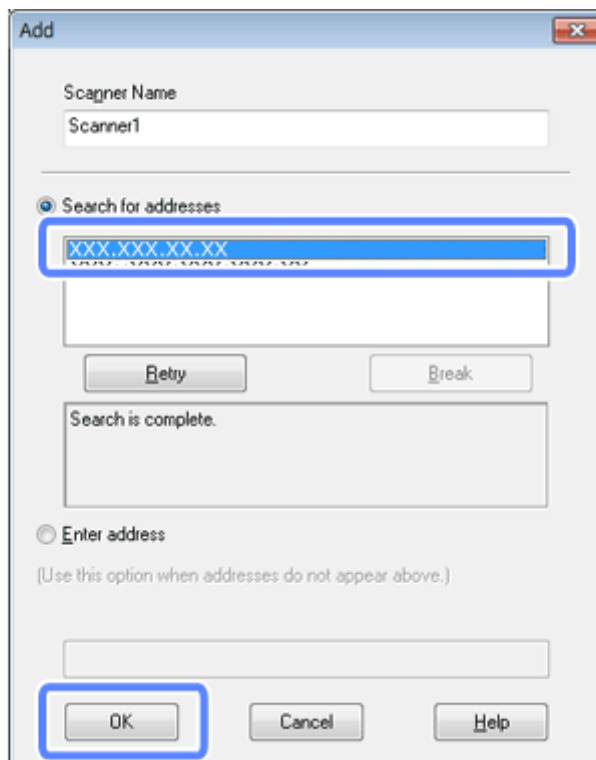
2 Select your scanner from the **Select Scanner** drop-down list.

Using Product via Network

3 Select **Network**, then click **Add**.



4 In the Add window, choose the product's IP address under Search for addresses. Then click **OK**.



Note:
You can add the product's IP address manually.
Select **Enter address**, type in the address, and then click **OK**.

Using Product via Network

- 5 In the Epson Scan Settings window, click **Test** to check the connection. If everything works properly, you see a successful connection message appears.
- 6 Click **OK** to save the settings.

Checking the product's IP address

This section describes how to check your product's IP address.

Check the following points before you start.

- EpsonNet Config is installed on your computer.
If it is not installed, install it from the software disc or download it from the following web site.
<http://support.epson.net/setupnavi/>
- The product is turned on and connected to a wireless network.

- 1 Start EpsonNet Config on your computer.

Windows 8.1/Windows 8:

Start screen > Apps > EpsonNet > EpsonNet Config

Windows 7/Windows Vista/Windows XP:

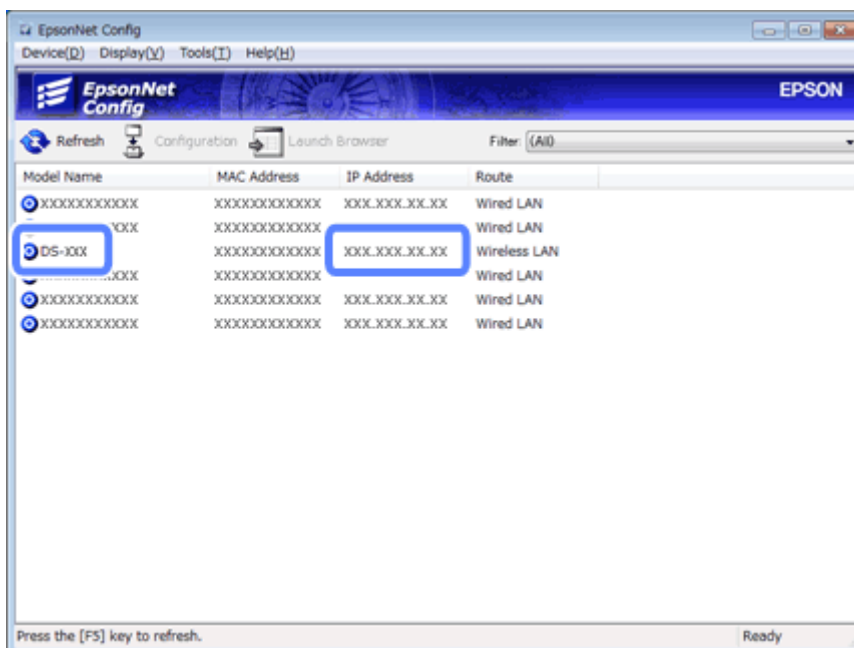
Start > All Programs or Programs > EpsonNet > EpsonNet Config VX* > EpsonNet Config

Mac OS X:

Select **Applications > Epson Software > EpsonNet > EpsonNet Config VX* > EpsonNet Config**.

* Where "X" is the software version.

- 2 Find your product in the list displayed, and then check the product's IP address.



Using Product via Network

Note:

You need the product's IP address if you want to check the connection using a Ping command.

➡ *[“Checking the communication using the Ping command” on page 23](#)*

Troubleshooting

Tips for Solving Network Problems

Network problems may be caused by the network environment, computer, and product. To help resolve problems, you can check and confirm the network status using the following methods.

Note:

When changes are made to the network settings, it takes about 30 to 60 seconds to reflect the setup changes. (The time until the changes are reflected varies depending on the setting method, wireless router, access point, and so on.)

Checking product settings

Make sure the connection mode switch on your product is set correctly.

If you are using infrastructure mode, set it to **Wi-Fi**. If you are using direct Wi-Fi connection set it to **AP mode**.

Updating product firmware

Network problems may be resolved by updating the product firmware. Confirm that you are using the latest version of the product firmware. Check the Epson web site for the latest firmware update releases. If there is no firmware information on the Epson web site, you are already using the latest firmware.

<http://www.epson.com/>

**Important:**

Do not turn off the product while the firmware is updating. If the product is turned off, the firmware may not be updated correctly, or your product could be damaged and have to be repaired.

Note:

There are two types of firmware for the product; the scanner's main firmware and the Wi-Fi module firmware. To update your firmware, follow the instructions in the firmware release information.

See the following section to check the firmware version.

- ➔ “Checking the scanner’s main firmware version” on page 21
- ➔ “Checking the Wi-Fi module firmware version” on page 22

Checking the scanner’s main firmware version

1

Start Epson Scan Settings.

Windows 8.1/Windows 8:

Start screen > Apps > Epson > EPSON Scan Settings

Troubleshooting

Windows 7/Windows Vista/Windows XP:

Start > All Programs or Programs > EPSON > EPSON Scan > EPSON Scan Settings

Mac OS X:

Select **Applications > EPSON Software > EPSON Scan Settings**.

2 Click **Test**.

Checking the Wi-Fi module firmware version

1 Start EpsonNet Config.

Windows 8.1/Windows 8:

Start screen > Apps > EpsonNet > EpsonNet Config

Windows 7/Windows Vista/Windows XP:

Start > All Programs or Programs > EpsonNet > EpsonNet Config VX* > EpsonNet Config

Mac OS X:

Select **Applications > Epson Software > EpsonNet > EpsonNet Config VX* > EpsonNet Config**.

* Where "X" is the software version.

2 Select your scanner, and then click **Configuration**.

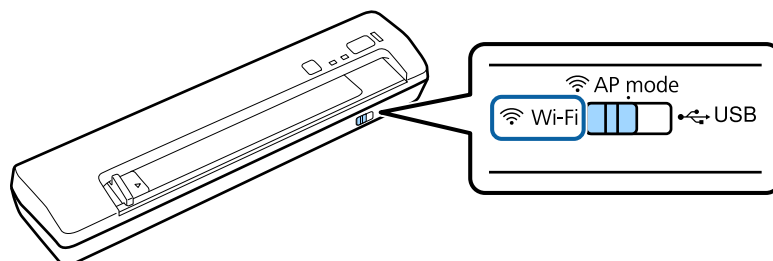
3 Select **Network Interface - Information - Basic**.

4 Click **Software Information....**

Initializing the product

You can initialize network settings such as information on the product's access point.

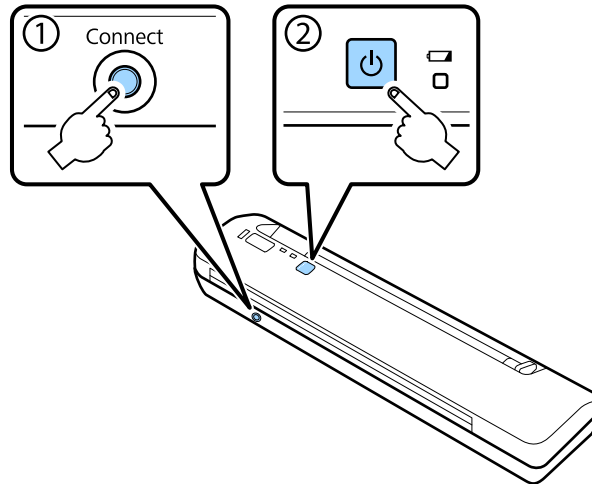
1 Set the connection mode switch on the product to **Wi-Fi**.



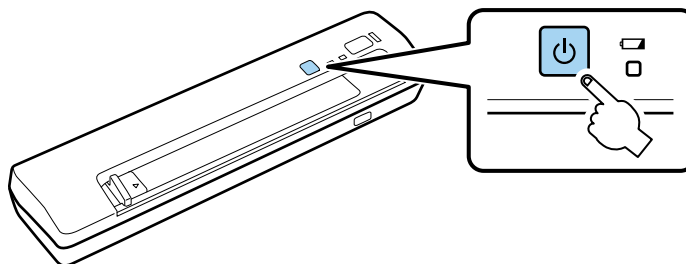
Troubleshooting

- 2** Hold down the **Connect** button on the product and turn it on.

Continue holding down the **Connect** button until the Ready and Wi-Fi lights on the product periodically flash alternately.



- 3** Turn off the product.



Checking the communication using the Ping command

You can use this feature to confirm whether communication is established between the computer and the product.

This method is only available if you have acquired the product's IP address in advance, such as in the following situations.

- You have set a static IP address for the product and have taken a note of it.
- You took a note of the product's IP address when you setup the network, and it has not been changed by settings on the access point or the product.

For more details about operating the computer, refer to [“Ping command” on page 23](#).

Ping command

In the TCP/IP network environment, confirm the IP addresses set on the computer and product, then check whether communication is established between the computer and product.

Troubleshooting

Confirming in Windows 8.1/8/7/Vista/XP

- 1 Make sure you have the product's IP address.
- 2 For Windows 8.1/8: **Start** screen > **Apps** > **Command Prompt**
For Windows 7/Vista/XP: Click the Start button or **start**, **All Programs** or **Programs, Accessories**, and then **Command Prompt**.
- 3 Type 'ping', a space, and '<the product's IP address>', then press the Enter key.
- 4 If a communication is established, **Reply from <the product's IP address>** is displayed.
If communication is not established, **Destination host unreachable** or **Request timed out** is displayed. Check the device's network settings on the computer.

Confirming in Mac OS X

- 1 Make sure you have the product's IP address.
- 2 Double-click **Macintosh HD**, **Applications**, **Utilities**, and then **Network Utility**.
- 3 Click the **Ping** tab.
- 4 Enter the product's IP address in the network address field.
- 5 Click **Ping**.
- 6 If communication is established, all signals are returned and **0% packet loss** is displayed.
If communication is not established, no signal is returned, and **100% packet loss** is displayed. Check the device's network settings on the computer.

Setup Problems

Connecting to Wi-Fi

Cannot connect to access point

- Is the product far from the access point, or is there an obstacle between them?**
Move the product close to the access point, or remove the obstacle.

Troubleshooting

Is the password correct?

The password is case-sensitive. Verify that the entered password is correct. A password may be called a “WEP key”, a “WPA passphrase”, a “Pre-Shared Key”, and so on according to the access point or security system being used.

Is the DHCP function for the access point enabled?

If it is disabled, change it to enabled. For more information on checking the settings or changing settings, see the manual supplied with your access point (or wireless router).

Are access restrictions set on the access point?

If access restrictions are set on the access point (wireless router, etc.), register the product’s MAC address or IP address on the access point to allow communication. For details, see the access point user’s guide.

Are usable wireless channels restricted on the WLAN-equipped computer?

Usable wireless channels may be restricted on a wireless-equipped computer. See the computer’s or wireless card’s user’s guide to confirm usable wireless channels. Verify that wireless channels confirmed above include channels set to the access point. If not, change the access point wireless channels.

Is the security mode set for your access point supported by your product?

If it is not, change the security mode to one that is supported by the product. For more information on checking the settings or changing settings, see the manual supplied with your access point (or wireless router).

Does the access point allow communication between wireless devices?

If the product and your computer are connected to the same access point and cannot communicate, the access point may be blocking communication between wireless devices connected to it. Allow communication between wireless devices on the access point. For more details, see the documentation supplied with the access point.

Cannot connect to network

Does your computer have more than one network interface?

The scanner may not be able to communicate with computers that have multiple network interfaces. To communicate with the scanner, disable all network interfaces on your computer except for the interface connected to the scanner.

When using TCP/IP, is the IP address set correctly for your environment?

The factory setting is not available as is. To use this IP address, delete it once and reenter the same address. Change the product’s IP address as appropriate for your environment.

Connecting with direct Wi-Fi connection

Cannot access the internet when connecting a product to a computer which has multiple network interfaces by using direct Wi-Fi connection

Is the network adapter connected to the Internet set to low priority?

If you connect a computer to the product by using direct Wi-Fi connection (access point mode) while using a low-speed Internet connection, you may not be able to access the internet.

1

Display the Windows Network Connections screen.

For Windows 8.1/8: Select **Desktop > Settings** charm > **Control Panel**, and then select **View network status and tasks > Change adapter settings**

Troubleshooting

For **Windows 7**: Click **Start > Control Panel > Network and Internet > Network and Sharing Center > View network status and tasks > Change adapter settings**

For **Windows Vista**: Click **Start > Control Panel > Network and Internet > Network and Sharing Center > View network status and tasks > Manage network connections**

For **Windows XP**: **Start > Control Panel > Network and Internet Connections > Network Connections**

2 Right-click **Wireless Network Connection (DIRECT-xxxxxxx)**, and then select **Properties**.

3 Select **Internet Protocol Version 4 (TCP/IPv4)**, and then click **Properties**.

4 Click **Advanced**.

5 Clear **Automatic metric**, enter "100" in **Internet metric**, and then click **OK**.

Note:

- If you still cannot connect to the Internet, perform the same operations from step 3 for **Internet Protocol Version 6 (TCP/IPv6)**.*
- You may need to set a larger value for the Internet metric, or you may need to change the setting for the Gateway's metric. Contact your network administrator for more details.*

Scanning Problems

Connecting to Wi-Fi

Cannot start, set or scan with EPSON Scan

- Are you using the product's button?**
When using a wireless connection, launch Epson Scan on your computer before scanning from the product button.
- Was the connection test successful?**
If it fails, verify that there are no problems with the network.
- Is the message "Network product is not available: currently being used by user." displayed?**
There may be a communication error between the product and your computer. Turn off the product, and then turn it back on.
- Are you using an IPv6 network?**
Epson Scan does not support networks that use IPv6 only. Use Epson Scan on a network that uses IPv4.
- Is the IP address set correctly on the computer?**
For details on network settings such as the IP address, see "[Setup Problems](#)" on page 24.

Troubleshooting

- ❑ **Was the communication disconnected?**
If the communication was disconnected during EPSON Scan startup, exit EPSON Scan, and restart after a while. If EPSON Scan cannot restart, turn the product off and back on, then retry.
Check the **Timeout Setting** in **EPSON Scan Settings**. For details, see the EPSON Scan Help.
- ❑ **Is the Firewall function active in Windows XP or later, or commercially available security software?**
If the Firewall function is active, the search may not work in **EPSON Scan Settings**. In this case, click **EPSON Scan Settings - Add - Enter address**, and directly enter the IP address.
- ❑ **Are you scanning a wide range in high resolution?**
If a wide range is scanned in high resolution, a communication error may occur. If the scan did not work, lower the resolution.

Software Problems

Unblocking Epson software

- ❑ **Did you click the Keep Blocking button on the Firewall screen?**
If you clicked the **Keep Blocking** button on the Windows Security Alert window during or after installation of the Epson software, follow the steps below to unblock Epson software.

- 1** For Windows 8.1/8: Select **Desktop > Settings** charm > **Control Panel**, and then select **System and Security**.
For Windows 7: Click **Start > Control Panel**, and then click **System and Security**.
For Windows Vista: Click **Start > Control Panel**, and then click **Security**.
For Windows XP: Click **start > Control Panel**, and then click **Security Center**.
- 2** For Windows 8.1/8: Select **Allow an app through Windows Firewall**.
For Windows 7: Click **Allow a program through Windows Firewall**.
For Windows Vista: Click **Allow a program through Windows Firewall**.
For Windows XP: Click **Windows Firewall**.
- 3** For Windows 8.1/8: Select **Change settings**, and then select **Allow another app**.
For Windows 7: Click **Allow another program**.
For Windows Vista: Click the **Exceptions** tab, and then click **Add Program**.
For Windows XP: Click the **Exceptions** tab, and then click **Add Program**.

Note for Windows Vista users:

Click **Change settings** if you cannot find the **Exceptions** tab.

- 4** Select Epson software from the list, and then select **Add** (for 8/7) or **OK** (for Vista/XP).
- 5** Confirm that the Epson software check box is selected in **Allow apps and features** (for 8), **Allowed programs and features** (for 7), **Programs or port** (for Vista), or **Programs and Services** (for XP), and then select **OK**.

Copyrights and Licenses for Network Features

Copyrights, Trademarks, and Licenses

Microsoft®, Windows®, and Windows Vista® are registered trademarks of Microsoft Corporation.

Apple, Mac OS, and Macintosh are trademarks of Apple Inc., registered in the U.S. and other countries.

Android™ is trademark of Google Inc.

Wi-Fi®, Wi-Fi Alliance®, and Wi-Fi Protected Access® (WPA) are registered trademarks of the Wi-Fi Alliance. Wi-Fi Protected Setup™, and WPA2™ are trademarks of the Wi-Fi Alliance.

Copyright 2014 Seiko Epson Corporation. All rights reserved.

Info-ZIP copyright and license

This is version 2007-Mar-4 of the Info-ZIP license. The definitive version of this document should be available at <ftp://ftp.info-zip.org/pub/infozip/license.html> indefinitely and a copy at <http://www.info-zip.org/pub/infozip/license.html>.

Copyright © 1990-2007 Info-ZIP. All rights reserved.

For the purposes of this copyright and license, “Info-ZIP” is defined as the following set of individuals:

Mark Adler, John Bush, Karl Davis, Harald Denker, Jean-Michel Dubois, Jean-loup Gailly, Hunter Goatley, Ed Gordon, Ian Gorman, Chris Herborth, Dirk Haase, Greg Hartwig, Robert Heath, Jonathan Hudson, Paul Kienitz, David Kirschbaum, Johnny Lee, Onno van der Linden, Igor Mandrichenko, Steve P. Miller, Sergio Monesi, Keith Owens, George Petrov, Greg Roelofs, Kai Uwe Rommel, Steve Salisbury, Dave Smith, Steven M. Schweda, Christian Spieler, Cosmin Truta, Antoine Verheijen, Paul von Behren, Rich Wales, Mike White.

This software is provided "as is," without warranty of any kind, express or implied. In no event shall Info-ZIP or its contributors be held liable for any direct, indirect, incidental, special or consequential damages arising out of the use of or inability to use this software.

Permission is granted to anyone to use this software for any purpose, including commercial applications, and to alter it and redistribute it freely, subject to the above disclaimer and the following restrictions:

1. Redistributions of source code (in whole or in part) must retain the above copyright notice, definition, disclaimer, and this list of conditions.
2. Redistributions in binary form (compiled executables and libraries) must reproduce the above copyright notice, definition, disclaimer, and this list of conditions in documentation and/or other materials provided with the distribution. The sole exception to this condition is redistribution of a standard UnZipSFX binary (including SFXWiz) as part of a self-extracting archive; that is permitted without inclusion of this license, as long as the normal SFX banner has not been removed from the binary or disabled.

Copyrights and Licenses for Network Features

3. Altered versions--including, but not limited to, ports to new operating systems, existing ports with new graphical interfaces, versions with modified or added functionality, and dynamic, shared, or static library versions not from Info-ZIP--must be plainly marked as such and must not be misrepresented as being the original source or, if binaries, compiled from the original source. Such altered versions also must not be misrepresented as being Info-ZIP releases--including, but not limited to, labeling of the altered versions with the names "Info-ZIP" (or any variation thereof, including, but not limited to, different capitalizations), "Pocket UnZip," "WiZ" or "MacZip" without the explicit permission of Info-ZIP. Such altered versions are further prohibited from misrepresentative use of the Zip-Bugs or Info-ZIP e-mail addresses or the Info-ZIP URL(s), such as to imply Info-ZIP will provide support for the altered versions.

4. Info-ZIP retains the right to use the names "Info-ZIP," "Zip," "UnZip," "UnZipSFX," "WiZ," "Pocket UnZip," "Pocket Zip," and "MacZip" for its own source and binary releases.

OPEN SOURCE SOFTWARE LICENSE

1) This product includes open source software programs listed in Section 6) according to the license terms of each open source software program.

2) We provide the source code of the GPL Programs, LGPL Programs and Apache License Program (each is defined in Section 6) until five (5) years after the discontinuation of same model of this product. If you desire to receive the source code above, please see the "Contacting Epson Support" in User's Guide, and contact the customer support of your region. You shall comply with the license terms of each open source software program.

3) The open source software programs are WITHOUT ANY WARRANTY; without even the implied warranty of MERCHANTABILITY AND FITNESS FOR A PARTICULAR PURPOSE. See the license agreements of each open source software program for more details, which are described on \Manual\OSS.pdf in the Software disk.

4) OpenSSL toolkit

This product includes software developed by the OpenSSL project for use in the OpenSSL Toolkit (<http://www.openssl.org/>).

This product includes cryptographic software written by Eric Young (eay@cryptsoft.com).

5) The license terms of each open source software program are described on \Manual\OSS.pdf in the Software disk.

6) The list of open source software programs which this product includes are as follows.

GNU GPL

This product includes the open source software programs which apply the GNU General Public License Version 2 or later version ("GPL Programs").

Copyrights and Licenses for Network Features

The list of GPL Programs:

base-passwd-3.5.7
 busybox-1.2.2.1
 ifupdown-0.6.8
 kernel-2.6.18
 lsp-arm-versatile926ejs-2.6.18_pro500
 module-init-tools-3.2pre1
 mount-2.12
 net-tools-1.60
 netbase-4.29
 psmisc-21.5
 readline-libs-5.0
 sysvinit-2.86
 udev-0.093
 udhcp 0.9.8cvs20050124-5
 util-linux-2.12
 usb8786

GNU LGPL

This product includes the open source software programs which apply the GNU Lesser General Public License Version 2 or later version (“LGPL Programs”).

The list of LGPL Programs:

uclibc-0.9.29
 libusb-libs-0.1.12
 zeroconf 0.6.1-1
 iksemel 1.4

Apache License

This product includes the open source software program “Bonjour” which apply the Apache License Version2.0 (“Apache License Program”).

Bonjour License

This product includes the open source software program “Bonjour” which applies the terms and conditions provided by owner of the copyright to the “Bonjour”.

Net-SNMP license

This product includes the open source software program “Net-SNMP” which applies the terms and conditions provided by owner of the copyright to the “Net-SNMP”.

OpenSSL License/Original SSLeay License

This product includes the open source software program “OpenSSL toolkit” which applies the license terms of OpenSSL License and Original SSLeay License.

BSD License (Berkeley Software Distribution License)

This product includes the open source software programs which apply the Berkeley Software Distribution License (“BSD Programs”).

Copyrights and Licenses for Network Features

The list of BSD Programs:

busybox-1.2.2.1
util-linux-2.12
mount-2.12
mvlutils-2.8.4
netkit-ftp-0.17
netkit-base-0.17
portmap-5beta

Sun RPC License

This product includes the open source software programs which apply the Sun RPC License (“Sun RPC Programs”).

The list of Sun RPC Programs:

busybox- 1.2.2.1
netkit-inetd-0.17
portmap-5beta

TCP Wrappers license

This product includes the open source software program “libwrap-libs-7.6” which applies the terms and conditions provided by owner of the copyright to the “TCP Wrappers”.

libncurses license

This product includes the open source software program “libncurses-5.4” which applies the terms and conditions provided by owner of the copyright to the “libncurses”.

busybox license

This product includes the open source software program “busybox- 1.2.2.1” which applies the terms and conditions provided by owner of the copyright to the “busybox”.

linux-ftpd license

This product includes the open source software program “linux-ftpd-0.17” which applies the terms and conditions provided by owner of the copyright to the “linux-ftpd”.

SHA1 license

This product includes the open source software program “SHA1” which applies the terms and conditions provided by owner of the copyright to the “SHA1”.

ARC4 license

This product includes the open source software program “ARC4” which applies the terms and conditions provided by owner of the copyright to the “ARC4”.

json_parser license

This product includes the open source software program “json_parser” which applies the terms and conditions provided by owner of the copyright to the “json_parser”.

MD5 license

Copyrights and Licenses for Network Features

This product includes the open source software program “MD5” which applies the terms and conditions provided by owner of the copyright to the “MD5”.

AES license

This product includes the open source software program “AES” which applies the terms and conditions provided by owner of the copyright to the “AES”.