



AL-M200/AL-MX200 PS

**PostScript Level3
Compatible User's Guide**

Copyright and Trademarks

No part of this publication may be reproduced, stored in a retrieval system, or transmitted in any form or by any means, mechanical, photocopying, recording, or otherwise, without the prior written permission of Seiko Epson Corporation. No patent liability is assumed with respect to the use of the information contained herein.

Neither is any liability assumed for damages resulting from the use of the information contained herein. Neither Seiko Epson Corporation nor its affiliates shall be liable to the purchaser of this product or third parties for damages, losses, costs, or expenses incurred by purchaser or third parties as a result of: accident, misuse, or abuse of this product or unauthorized modifications, repairs, or alterations to this product, or (excluding the U.S.) failure to strictly comply with Seiko Epson Corporation's operating and maintenance instructions.

Seiko Epson Corporation and its affiliates shall not be liable against any damages or problems arising from the use of any options or any consumable products other than those designated as Original Epson Products or Epson Approved Products by Seiko Epson Corporation.

Apple®, Bonjour®, ColorSync®, Macintosh®, and Mac OS® are trademarks of Apple Inc. in the United States and/or other countries.

Microsoft®, Windows Vista®, Windows®, and Windows Server® are trademarks of Microsoft Corporation in the United States and/or other countries.

EPSON is a registered trademark of Seiko Epson Corporation.

General Notice: Other product names used herein are for identification purposes only and may be trademarks of their respective owners. Epson disclaims any and all rights in those marks.

Copyright © 2013 Seiko Epson Corporation. All rights reserved.

Contents

Chapter 1 Overview

PPD File Names Corresponding to Print Drivers.	4
Printer Names / PPD File Names for Windows.	4
Printer Names / PPD File Names for Macintosh.	4
Available Software and Supported OS.	4
For Windows.	4
For Macintosh.	5
PostScript Level3 Compatible Print Driver.	5

Chapter 2 Installing of Print Drivers for Windows Computers

Supplied Software Disc.	6
Hardware/Software Requirements.	6
Computer System.	6
Basic Software.	7
Installing the Print Driver.	7
Using "Easy Install Navi".	8
Using Add Printer Wizard.	10
Using the USB Port.	17

Chapter 3 Installing of Print Drivers for Macintosh Computers

Supplied Software Disc.	20
Hardware/Software Requirements.	20
Installing the Print Driver.	20
Installation Procedure (Mac OSX 10.5-10.7).	21
Adding a Printer (Mac OS X 10.5-10.7).	23

Index

Chapter 1

Overview

PPD File Names Corresponding to Print Drivers

PPD file names correspond to printer names as follows.

Printer Names / PPD File Names for Windows

Model being used	PPD File Name	Printer Name
AL-M200DN	seapn1m.ppd	EPSON AL-M200DN PS3
AL-M200DW	seapn1m.ppd	EPSON AL-M200DW PS3
AL-MX200DNF	seapn2m.ppd	EPSON AL-MX200DNF PS3
AL-MX200DWF	seapn2m.ppd	EPSON AL-MX200DWF PS3

Printer Names / PPD File Names for Macintosh

Model being used	PPD File Name	Printer Name
AL-M200DN	EPSON AL-M200DN PS3	EPSON AL-M200DN
AL-M200DW	EPSON AL-M200DW PS3	EPSON AL-M200DW
AL-MX200DNF	EPSON AL-MX200DNF PS3	EPSON AL-MX200DNF
AL-MX200DWF	EPSON AL-MX200DWF PS3	EPSON AL-MX200DWF

Available Software and Supported OS

For Windows

Installation software, Windows PostScript Level3 Compatible print driver and PPD file are provided.

Supported OS

- Windows XP
- Windows XP (64-bit)
- Windows Server 2003
- Windows Server 2003 (64-bit)
- Windows Vista
- Windows Vista (64-bit)
- Windows Server 2008
- Windows Server 2008 (64-bit)
- Windows Server 2008 R2
- Windows 7
- Windows 7 (64-bit)

For Macintosh

All-in-one installation package is provided.

Supported OS

Mac OS X 10.5.8 - 10.6, 10.7

PostScript Level3 Compatible Print Driver

This print driver supports 80 PostScript Level3 Compatible fonts and PostScript Level3 Compatible printing in this product.

Chapter 2

Installing of Print Drivers for Windows Computers

Supplied Software Disc

The Software Disc provided with the product contains the following contents.

Note:

The Software Disc supports Windows XP, Windows Server 2003, Windows Vista, Windows Server 2008, Windows 7 and Windows Server 2008 R2.

❑ **PS folder in Drivers folder**

Contains the PPD files, the plug-in files, and the inf file for installing the print driver.

❑ [x32] folder in [Win_7VistaXP] folder: Supports the 32-bit version OS.

❑ [x64] folder in [Win_7VistaXP] folder: Supports the 64-bit version OS.

❑ **SetupAssistance folder**

Contains the installation software (Easy Install Navi) for Windows use.

❑ **User_Guide folder**

Contains the *User's Guide*, *Wireless Network Setup Guide*, and *Software Installation Guide* in the PDF format.

Hardware/Software Requirements

The minimum system requirements for the Windows print driver are described below.

Computer System

Personal computer running Windows XP/Windows Server 2003/Windows Vista/Windows 7/
Windows Server 2008/Windows Server 2008 R2.

Basic Software

- Windows XP
- Windows XP (64-bit)
- Windows Server 2003
- Windows Server 2003 (64-bit)
- Windows Vista
- Windows Vista (64-bit)
- Windows Server 2008
- Windows Server 2008 (64-bit)
- Windows Server 2008 R2
- Windows 7
- Windows 7 (64-bit)

Installing the Print Driver

Installing the print driver via the Windows "Add Printer Wizard" or the "Easy Install Navi" stored on the Software Disc enables you to add our product's functions to your PostScript Level3 Compatible driver. For installing the print driver, the following three methods are available:

- Using "Easy Install Navi"

Use "Easy Install Navi" to install print driver and printer. Connect the printer to be installed with a PC directly using USB cable or specify a printer to be installed from the TCP/IP network.

For the method of installation, see "Using "Easy Install Navi"" on page 8.

- Using "Add Printer Wizard" of Windows PC

Use "Add Printer Wizard" wizard to install print driver and printer.

For the method of installation, see "Using Add Printer Wizard" on page 10.

- Using the USB Port

Connect the printer with a PC using USB cable to install print driver and printer.

For the method of installation, see "Using the USB Port" on page 17.

Using "Easy Install Navi"

This section describes how to start the "Easy Install Navi" and add printers to computers by following the procedure below.

This section describes how to install the print driver for Windows 7, as an example.

Note:

To cancel the installation of the print driver during installation, click [Cancel] in the dialog box. You can also click [Back] to delete the settings in that dialog box and return to the previous dialog box.

Installing Using the USB cable

1. Start Windows 7.

Note:

Make sure that you are logged on as an Administrator.

2. Insert the USB cable into the USB interface connector of the printer.
3. Insert the other end of the USB cable into the USB interface connector of the computer.
4. Turn on the power to the printer.
5. Insert the Software Disc in the CD-ROM drive.

The [Install Navi] window is displayed.

Note:

If the [AutoPlay] dialog box is displayed, click [Run setup.exe] to start the Install Navi.

6. Click [Easy Install]. The [SOFTWARE LICENSE AGREEMENT] appears.
7. If you agree to the terms of the [SOFTWARE LICENSE AGREEMENT], select [Agree] and then click [Next].The [Easy Install Navi] launches.
8. Click [Installing Drivers and Software].

9. Select [Personal Installation] and click [Next].

Installation begins.

10. Click [Finish] to exit the wizard.

This completes the installation of the print driver.

Installing via a TCP/IP Network

1. Start Windows 7.

Note:

Make sure that you are logged on as an Administrator.

2. Connect the printer to the network in a TCP/IP (LPD) environment.
3. Turn on the power to the printer.
4. Insert the Software Disc in the CD-ROM drive.

The [Install Navi] window is displayed.

Note:

If the [AutoPlay] dialog box is displayed, click [Run setup.exe] to start the Install Navi.

5. Click [Easy Install]. The [SOFTWARE LICENSE AGREEMENT] appears.
6. If you agree to the terms of the [SOFTWARE LICENSE AGREEMENT], select [Agree] and then click [Next]. The [Easy Install Navi] launches.
7. Click [Installing Drivers and Software].
8. Select [Network Installation] and click [Next].

Printers connected to LPD and TCP/IP within the same subnet are listed in [Select Printer].

9. Check if the printer to be installed is listed in [Select Printer], and then click [Next].

Note:

If the printer to be installed is not listed in [Select Printer], try either of the following steps:

- Click [Refresh] to update the information.

❑ Click [Add Printer], and then enter the details of the printer manually.

10. Confirm that the [Install PS printer driver] check box is checked and select the other required items on [Enter Printer Settings], and then click [Next].
11. Select the software to be installed, and then click [Install].

Installation begins, and then the [InstallShield Wizard Complete] dialog box appears.

12. Select whether to restart your computer and click [Finish] to exit the wizard.

This completes the installation of the print driver.

Using Add Printer Wizard

For Windows XP/Windows Server 2003

The section described the installation procedure for Windows XP and Windows Server 2003. In this manual, Windows XP is used as an example.

Note:

To cancel installation of the print driver during installation, click [Cancel] in the dialog box. You can also click [Back] to delete the settings in that dialog box and return to the previous dialog box.

1. Start Windows XP.

Note:

Log in as an user of an Administrator group. Refer to the Windows XP documentation for details about the Administrator group.

2. Connect the printer to the computer with a USB cable, or to the network in a TCP/IP (LPD) environment.
3. Turn on the power to the printer.
4. On the [start] menu, click [Printers and Faxes].

Note:

For Windows Server 2003, select [Printers and Faxes] from the [Start] menu.

5. In the [Printers and Faxes] window, click [Add a printer].

Note:

For Windows Server 2003, select [Add a printer] in [Printer Tasks].

6. Click [Next].
7. Select [Local printer attached to this computer].

Note:

- When you select [Local printer attached to this computer], deselect the [Automatically detect and install my Plug and Play printer] check box.
- Specify the target printer in the [Specify a Printer] dialog box if you selected [A network printer, or a printer attached to another computer].

8. Select the port you are using and click [Next].

When the printer is connected in a TCP/IP(LPD) environment:

- 1) Click [Create a new port].
- 2) Select [Standard TCP/IP Port] in the [Type of port] list and click [Next].
- 3) Click [Next].
- 4) Enter the IP address of the printer in [Printer Name or IP Address], and click [Next].
- 5) Click [Finish] in the dialog box that will be displayed.

When using a USB port:

When using a USB port, select [LPT1] here.

9. Insert the Software Disc in the CD-ROM drive.
10. Click [Have Disk].
11. For 32-bit editions of Windows, enter "Drive Name:\Drivers\PS\Win_7VistaXP\x32\English" in the [Copy manufacturer's files from] box, and click [OK].

For 64-bit editions of Windows, enter "Drive Name:\Drivers\PS\Win_7VistaXP\x64\English" in the [Copy manufacturer's files from] box, and click [OK].

Note:

- The above directory indicates the folder where the PS driver for English is stored as an example. To confirm the folder name for the other languages, refer to the directory directly in the Software Disc.*
- Click [Browse] to specify a folder on the Software Disc.*

12. Select your printer model from the Printers list and click [Next].

13. Enter the printer name, and click [Next].

14. Select [Do not share this printer], and click [Next].

Note:

We recommend that you install the driver on each computer with the procedure appropriate to the Operating System.

15. Specify whether to print a test page, and click [Next].

16. After confirming the settings displayed, click [Finish].

Installation begins.

Note:

If the [Hardware Installation] dialog box appears, click [Continue Anyway] to continue the installation.

17. Confirm that the printer has been added in the [Printers] window.

This completes the installation of the print driver. Remove the Software Disc from the drive.

Store the Software Disc in a safe place.

For Windows Vista/Windows Server 2008

This section describes the installation procedure for Windows Vista and Windows Server 2008. In this manual, Windows Vista is used as an example.

Note:

To cancel the installation of the print driver during installation, click [Cancel] in the dialog box.

1. Start Windows Vista.

Note:

Make sure that you are logged in as an Administrator.

2. Connect the printer to the computer with a USB cable, or to the network in a TCP/IP (LPD) environment.
3. Turn on the power to the printer.
4. On the [Start] menu, select [Control Panel].
5. Select [Printers] under [Hardware and Sound].
6. Select [Add a printer].
7. If the printer is connected directly to your computer or to the network in a TCP/IP (LPD) environment, select [Add a local printer]. Otherwise, select [Add a network, wireless or Bluetooth printer].
8. Select the port you are using, and click [Next].

When the printer is connected in a TCP/IP(LPD) environment:

- 1) Select [Create a new port].
- 2) Select [Standard TCP/IP Port] in the [Type of port] list, and click [Next].
- 3) Enter the IP address of the printer in [Hostname or IP address], and click [Next].
- 4) When “Additional Port Information Required” is displayed, select the series name of the model being used with [Standard] of [Device Type].
- 5) Click [Finish] in the dialog box that will be displayed.

When using a USB port:

When using a USB port, select [LPT1] here. When installation of the print driver completes, set the USB port.

See “Using the USB Port” on page 17 to configure the USB port.

The screen for selecting the model and the manufacturer of the printer is displayed.

9. Insert the Software Disc in the CD-ROM drive.

10. Click [Have Disk].
11. For 32-bit editions of Windows, enter "Drive Name:\Drivers\PS\Win_7VistaXP\x32\English" in the [Copy manufacturer's files from] box, and click [OK].

For 64-bit editions of Windows, enter "Drive Name:\Drivers\PS\Win_7VistaXP\x64\English" in the [Copy manufacturer's files from] box, and click [OK].

Note:

- The above directory indicates the folder where the PS driver for English is stored as an example. To confirm the folder name for the other languages, refer to the directory directly in the Software Disc.*
- Click [Browse] to specify a folder on the Software Disc.*

12. Select your printer model from the Printers list and click [Next].
13. Enter the printer name, and click [Next].
14. Select [Do not share this printer], and click [Next].

Note:

We recommend that you install the driver on each computer with the procedure appropriate to the Operating System.

15. Specify whether to print a test page, and click [Next].
16. After confirming the settings displayed, click [Finish].

Note:

If the [Digital Signature Not Found] dialog box appears, click [Yes] to continue the installation. Installation begins.

17. Confirm that the printer has been added in the [Printers] window.

This completes the installation of the print driver. Remove the Software Disc from the drive.

Store the Software Disc in a safe place.

For Windows 7/Windows Server 2008 R2

This section describes the installation procedure for Windows 7 and Windows Server 2008 R2. In this manual, Windows 7 is used as an example.

Note:

To cancel the installation of the print driver during installation, click [Cancel] in the dialog box.

1. Start Windows 7.

Note:

Make sure that you are logged on as an Administrator.

2. Connect the printer to the computer with a USB cable, or to the network in a TCP/IP (LPD) environment.
3. Turn on the power to the printer.
4. On the [Start] menu, select [Devices and Printers].
5. In the [Devices and Printers] window, select [Add a printer].
6. Select how the printer is connected to the computer.

If the printer is connected directly to your computer or to the network in a TCP/IP (LPD) environment, select [Add a local printer].

7. Select the port you are using, and click [Next].

When the printer is connected in a TCP/IP (LPD) environment:

- 1) Select [Create a new port].
 - 2) Select [Standard TCP/IP Port] in the [Type of port] list, and click [Next].
 - 3) Enter the IP address of the printer in [Hostname or IP address], and click [Next].
 - 4) When [Additional port information required] is displayed, select the series name of the model being used with [Standard] of [Device Type], and click [Next].
 - 5) Click [Finish] in the dialog box that will be displayed.
8. Insert the Software Disc in the CD-ROM drive.
 9. Click [Have Disk].

10. For 32-bit editions of Windows, enter "Drive Name:\Drivers\PS\Win_7VistaXP\x32\English" in the [Copy manufacture's files from] box, and click [OK].

For 64-bit editions of Windows, enter "Drive Name:\Drivers\PS\Win_7VistaXP\x64\English" in the [Copy manufacture's files from] box, and click [OK].

Note:

- The above directory indicates the folder where the PS driver for English is stored as an example. To confirm the folder name for the other languages, refer to the directory directly in the Software Disc.*
- Click [Browse] to specify a folder on the Software Disc.*

11. Select your printer model from the Printers list, and click [Next].
12. Enter the printer name, and click [Next].
13. Select [Do not share this printer], and click [Next].

Note:

We recommend that you install the driver on each computer with the procedure appropriate to the Operating System.

14. Specify whether to print a test page.
15. After confirming the settings displayed, click [Finish].

Installation begins.

Note:

If the [User Account Control] dialog box appears, click [Yes] to continue the installation.

16. Confirm that the printer has been added in the [Devices and Printers] window.

This completes the installation of the print driver. Remove the Software Disc from the drive.

Store the Software Disc in a safe place.

Using the USB Port

This section explains how to use the OS standard USB port with computers on which Windows XP, Windows Server 2003, Windows Vista, Windows 7, Windows Server 2008 or Windows Server 2008 R2 is installed, for printing.

For Windows XP, Windows Server 2003 / 2008 or Windows Vista

As an example, this section describes how to install the print driver for Windows XP.

1. Insert the USB cable into the USB interface connector of the printer.
2. Insert the other end of the USB cable into the USB interface connector of the computer.
3. Turn on the power to the printer.

The [Found New Hardware Wizard] dialog box is displayed.

4. Select [No, not this time], and click [Next].
5. Select [Install from a list or specific location (Advanced)], and click [Next].
6. Select [Search for the best driver in these locations].
7. Insert the Software Disc in the CD-ROM drive.
8. Select [Search removable media (floppy, CD-ROM...)], and click [Next].

Note:

If the [Hardware Installation] dialog box appears, click [Continue Anyway] to continue the installation.

9. Select the driver to be used from the list and click [Next].
10. Click [Finish]. The print driver is installed.
11. From the [start] menu, select [Printers and Faxes].

The [Printers and Faxes] window is displayed.

Note:

For Windows Vista and Windows Server 2008, select [Control Panel] from the [Start] menu, and select [Hardware and Sound] — [Printers].

12. Right-click the icon of the printer that you installed and select [Properties].

The [Properties] dialog box is displayed.

13. Check that the USB port for the printer in use is added correctly under [Print to the following port(s)] in the [Ports] tab.

14. Click [Print Test Page] in the [General] tab.

The dialog box appears to confirm whether or not the test print is completed successfully.

15. Check the print result, and if the test print is completed successfully, click [OK].

16. Click [OK] in the [Properties] dialog box.

You have completed the settings to use the printer.

For Windows 7, Windows Server 2008 R2

As an example, this section describes how to install the print driver for Windows 7.

1. Insert the USB cable into the USB interface connector of the printer.
2. Insert the other end of the USB cable into the USB interface connector of the computer.
3. Turn on the power to the printer.

Displays the message indicating the driver is not installed correctly.

4. Select [Devices and Printers] from the [Start] menu for Windows 7.

The [Devices and Printers] window is displayed.

5. Right-click the printer icon is added to the [Unspecified] in the [Devices and Printers] window and select [Properties].

The [Properties] dialog box is displayed.

Note:

The printer icon with the "!" mark is added at [Printers and Faxes] depending on the driver software to install.

6. Click the [Hardware] tab and select the printer is added from the [Device Functions], click the [Properties] button.
7. Click the [General] tab on the [Properties] dialog box and click the [Change settings] button.
8. Click the [Driver] tab on the [Properties] dialog box and click the [Update Driver] button.

The [Update Driver Software] window is displayed.

9. Select [Browse my computer for driver software].
10. Insert the Software Disc in the CD-ROM drive.
11. Click the [Browse] button to select the driver software and click the [Next].

Start the installation of the driver software, and the window appears to indicate a successful installation.

12. Click the [Close] button.

The printer icon is displayed at the [Printers and Faxes] on the [Devices and Printers] window, and you can use the printer.

Note:

If the printer icon with the "!" is added at the [Printers and Faxes], "!" mark will disappear.

Chapter 3

Installing of Print Drivers for Macintosh Computers

Supplied Software Disc

The Software Disc provided with the product contains the following contents.

- ❑ AL-M200 Software Installer.mpkg/AL-MX200 Software Installer.mpkg
All-in-one installation software allows to install the printer and drivers.
- ❑ [Users_Guide] folder
Contains *User's Guide* in the PDF format.

Hardware/Software Requirements

The minimum system requirements for the Macintosh print driver are described below.

Computer System

- ❑ A Macintosh computer running a supported version of Mac OS.

Basic Software

- ❑ For PPD & Plug-in Installer - Mac OS X 10.5-10.7

Installing the Print Driver

This section explains the procedures for adding printers to Mac OS X.

Before starting, verify that the USB or Ethernet port has been selected to match your computing environment with the printer. For details, see the documentation that came with your printer.

Note:

The windows in this section show AL-MX200 Series as an example.

Installation Procedure (Mac OSX 10.5-10.7)

Install the drivers including PPD file.

1. Start Macintosh.
2. Insert the Software Disc in the CD-ROM drive.
3. Double-click [EPSON].

The [EPSON] window appears.

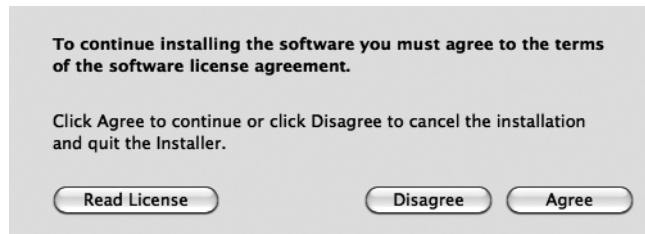
4. Double-click [AL-M200 Software Installer] (for AL-M200 Series) or [AL-MX200DNF_DNW Software Installer] (for AL-MX200 Series).
5. When the first screen of the installation program appears, click [Continue].

The license window appears.

6. Read through the license agreement carefully and if you have no objections to it, click [Continue].



- Click [Agree].



Note:

When the window to select the installation location appears, click [Continue].

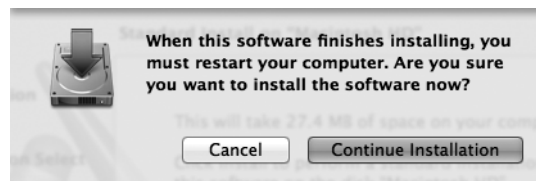
- Confirm the Installation Location and click [Install].
- Enter an Administrator name and password, and click [OK].

Note:

For Mac OS X 10.7, click [Install Software].



- (For AL-MX200 Series only) When the restart confirmation screen appears, click [Continue Installation].



- When a message appears telling you installation has completed, click [Close] (for AL-M200 Series) or [Restart] (for AL-MX200 Series).

This completes the installation.

Adding a Printer (Mac OS X 10.5-10.7)

After the PPD file has been installed, set the PPD file for the print driver, and then add the printer.

The print driver controls the printer functions based on the information in the PPD file.

As an example, this section describes how to add a printer in a Mac OS X 10.6.

1. When using a USB port, execute the following procedure. If not using a USB port, proceed to Step 2.
 - 1) If the USB cable is connected, temporarily disconnect it.
 - 2) Make sure the computer is turned on, and the printer is turned off.
 - 3) Connect the printer and the computer with the USB cable.
 - 4) Turn ON the power of the printer.

2. Make sure the printer port is set to Enable.

- When using IP Printing

Set the LPD port to Enable.

Note:

Printers on an IP network can be detected automatically. To enable the discovery function, start [Bonjour].

- When using [USB-1(2.0)] / [USB-2(2.0)]

Set the USB port to Enable.

To enable the USB port, see the documentation that came with your printer. Depending on the model being used, specification of the print mode may be unnecessary.

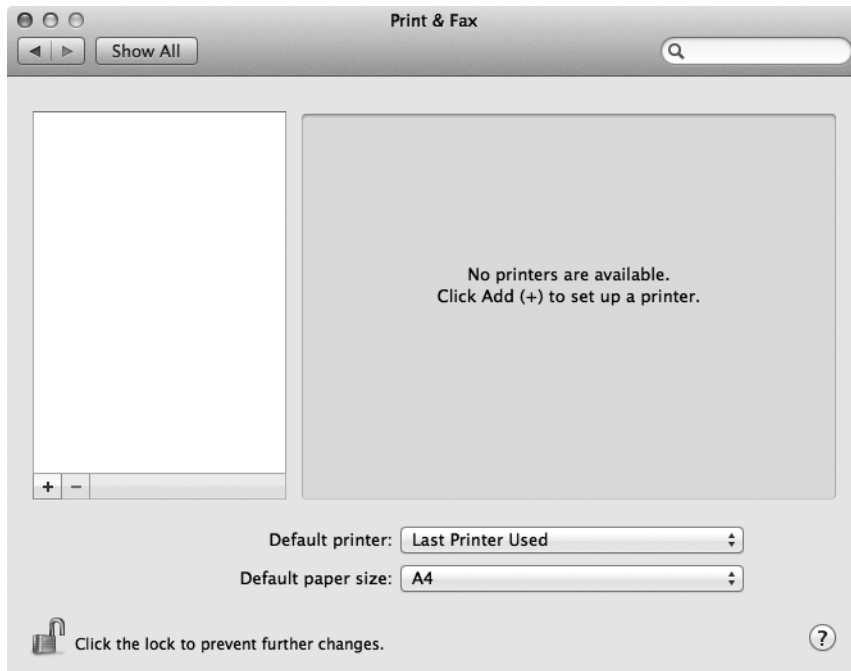
3. Start [System Preferences].
4. Click [Print & Fax].

Note:

For Mac OS X 10.7, click [Print & Scan].



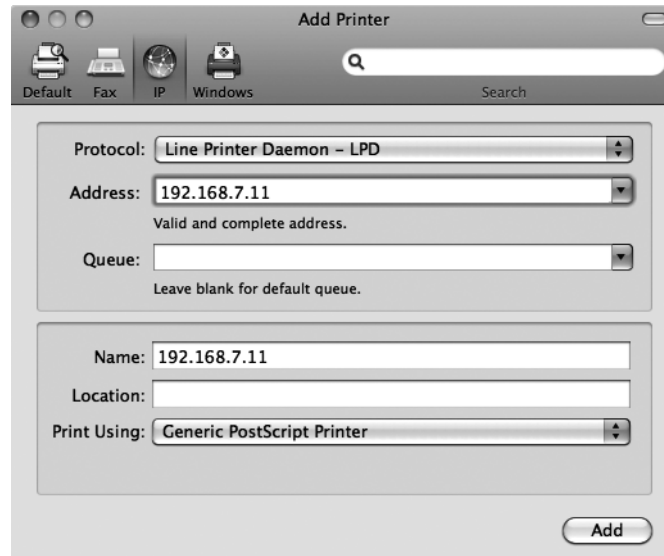
5. Click [+].



6. Select the protocol used to connect the printer.

When using IP Printing

1. Select [IP] from the menu, and select [Line Printer Daemon - LPD] for Protocol.
2. Enter the IP address for the printer being used in [Address].



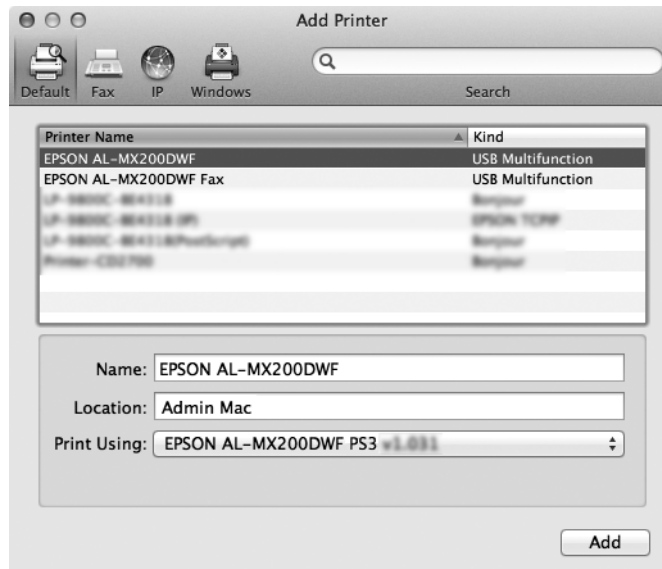
3. Select [Select Printer Software] from the dropdown list of [Print Using].
4. Select the printer to be used and click [OK].
5. Click [Add].

This completes the addition of a printer.

When using [USB-1(2.0)] / [USB-2(2.0)] or Bonjour

1. Select [Default] from the menu.

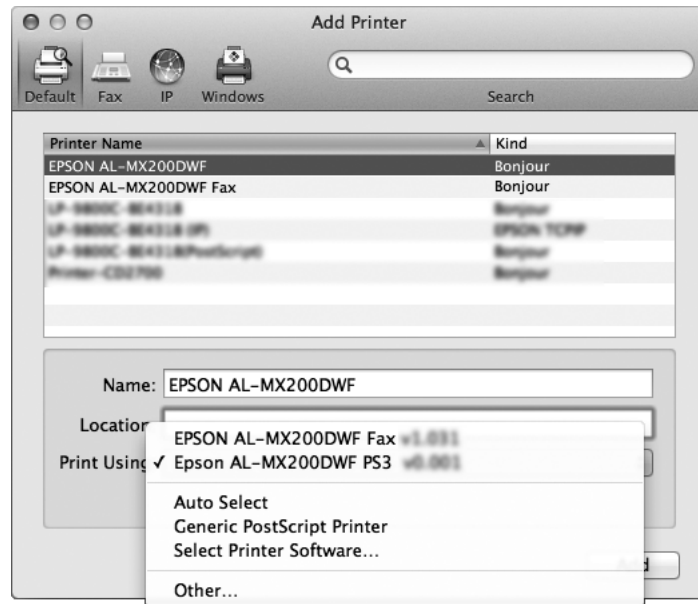
The following window appears.



Note:

Normally, the driver of the printer being searched is recognized automatically. If the driver is not recognized automatically, or you desire to select the driver manually, perform the following procedure a) to c); otherwise, proceed to step 2.

- a) Select [Select Printer Software] from the dropdown list of [Print Using]. A list of the drivers installed on the computer is displayed.



- b) Select the driver to install and click [OK].
- c) Click [Add]. The printer is added.
2. Select the printer to be used.
3. Click [Add].

This completes the addition of a printer.

Index

I

Installing the Print Driver

Mac OS.....	20
Windows OS.....	7