

AL-M200 Series

Wireless Network Setup Guide

Wireless Network Setup Guide

Checking Your Network

Confirm your computer's network settings, and then choose what to do next. Follow the instructions for the environment in which your network devices such as a wireless router or a wireless adapter work properly.

Windows 7

1. Select **Start — Control Panel — Network and Internet**.
2. Click **Network and Sharing Center**.
3. Click **Change adapter settings**.
4. On the window that appears, answer the following questions in “Checking items” on page 3.

Windows XP

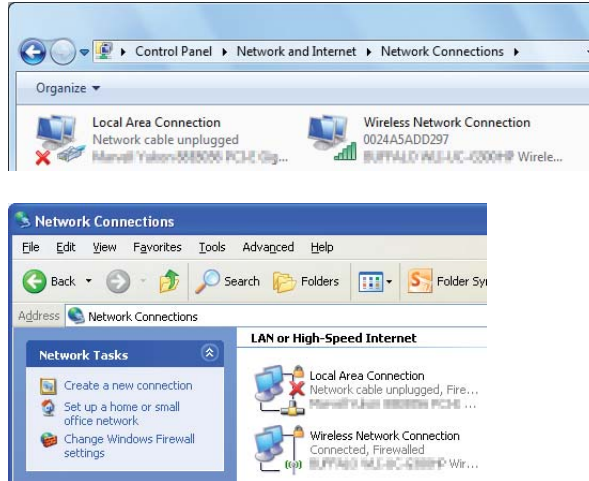
1. Select **start — Control Panel**.
2. Click **Network Connections**.
3. On the window that appears, answer the following questions in “Checking items” on page 3.

Mac OS X

1. Select **System Preferences** from the Apple Menu.
2. Click **Network** icon.
3. Proceed to “Configuring Wireless Settings (For Mac OS X)” on page 26.

Checking items

1. Is there the **Wireless Network Connection** icon?



Yes: Wireless LAN connection is available. Proceed to step 2.

No: Proceed to step 3.

2. Does the **Wireless Network Connection** icon have a red ?

Yes: Wireless LAN (Ad Hoc) connection is available.

Windows 7	Windows XP
	

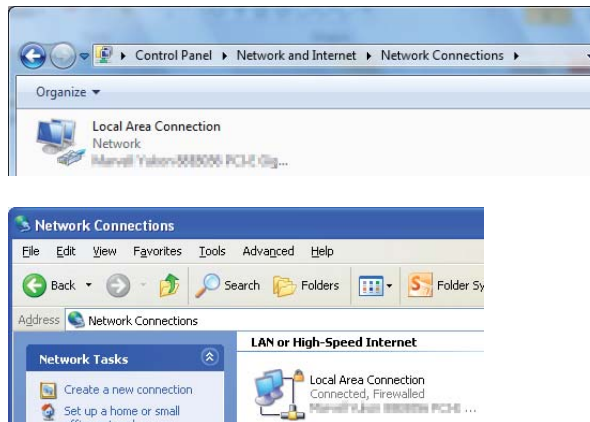
Go to “Ad Hoc Settings for Windows” on page 15.

No: Wireless LAN (Wi-Fi) connection is available.

Windows 7	Windows XP
	

Go to “Configuring Wireless Settings (for Windows)” on page 5.

3. Is there the **Local Area Connection** icon?



Yes: Proceed to step 4.

No: Network connection is not available. You need to set up network environment for your computer.

4. Does the **Local Area Connection** icon have a red ❌?

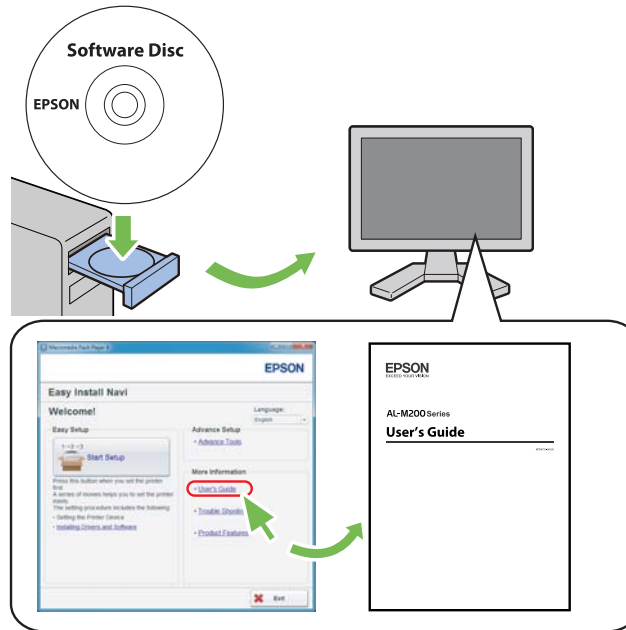
Yes: Network connection is not available. You need to set up network environment for your computer.

Windows 7	Windows XP
	

No: Wired LAN connection is available. Go to step 5.

Windows 7	Windows XP
	

5. Refer to *User's Guide* for more information.



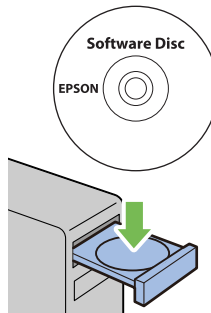
Configuring Wireless Settings (for Windows)

Note:

Be sure to get the SSID and security information from a system administrator in advance when you use other than WPS.

The following procedure uses Windows 7 as an example.

1. Insert the Software Disc provided with the printer in your computer.



When the **AutoPlay** window appears, click **Run setup.exe** to start the **Install Navi**.

Note:

*If the CD does not automatically launch or the **AutoPlay** window does not appear, click **Start — Computer — D:\setup.exe** (where D is the drive letter of your CD), and then click **OK**.*

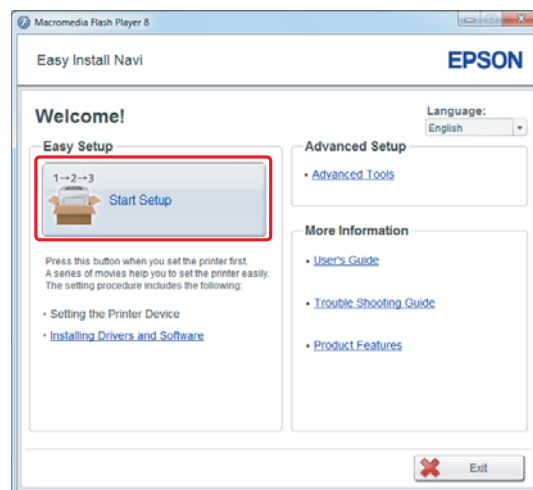
2. Click **Easy Install**.

The **SOFTWARE LICENSE AGREEMENT** appears.

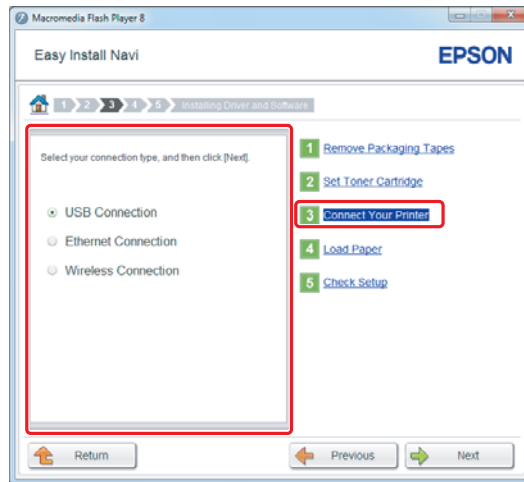
3. If you agree to the terms of the **SOFTWARE LICENSE AGREEMENT**, select **Agree** and then click **Next**.

Easy Install Navi launches.

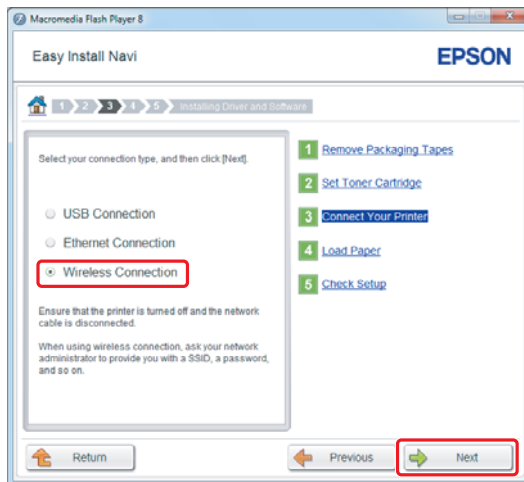
4. Click **Start Setup**.



5. Ensure that **Connect Your Printer** is selected and the Select your type of connection screen is displayed.

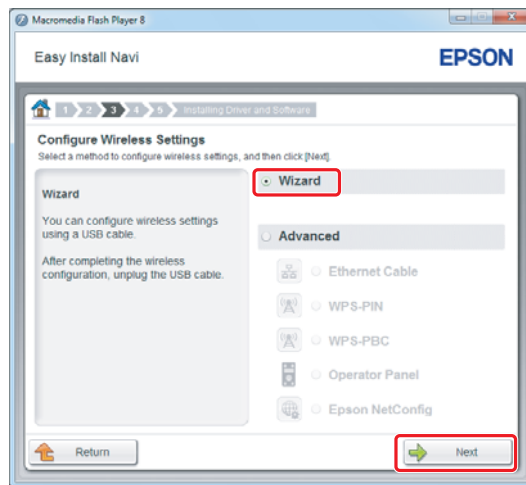


6. Select **Wireless Connection**, and then click **Next**.



The setting method selection window appears.

7. Ensure that **Wizard** is selected, and then click **Next**.



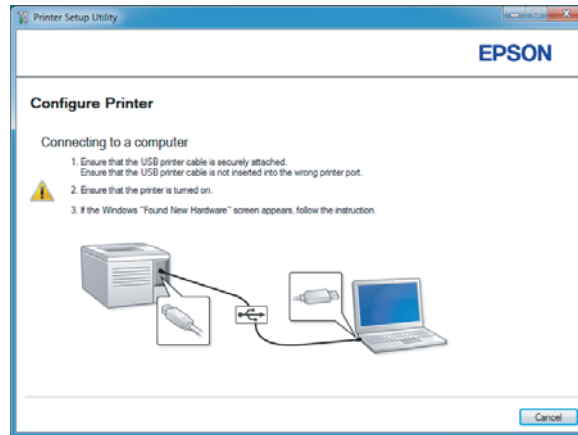
Note:

If you select **Advanced**, refer to *User's Guide* for more information.

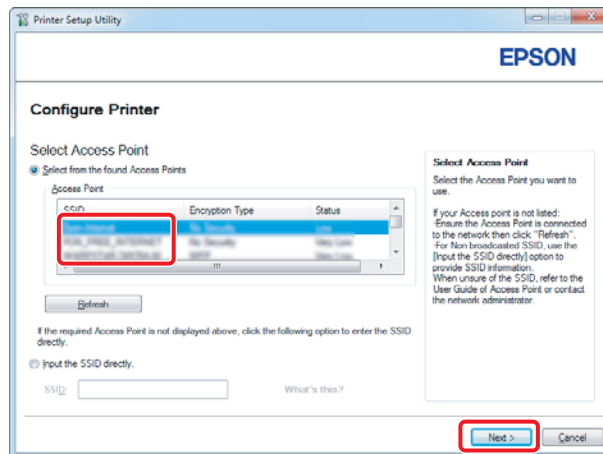
8. Follow the instructions until the Printer Setup Utility screen appears.



If the following window appears, make sure the USB cable is connected to the USB port on the printer.



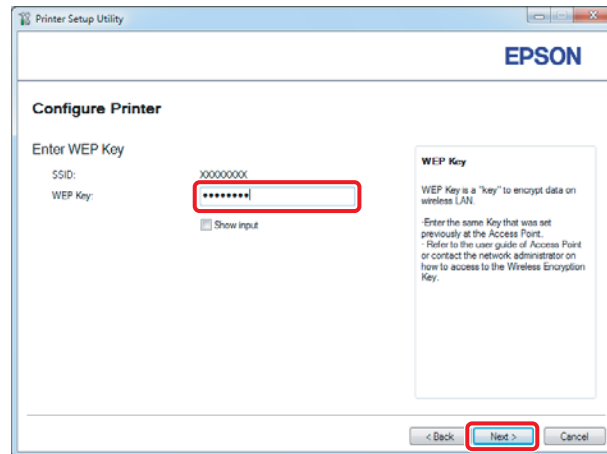
9. Select the SSID that you want to connect to as an access point, and then click **Next**.



Note:

To enter the SSID directly, click *Input the SSID directly* radio button and enter the SSID in the SSID box.

10. Enter the **WEP Key** for the selected access point, and then click **Next**.



Note:

To display the entered character, select the Show input check box.

11. Select **IP Mode** depending on your network scheme.

When **IPv4** is selected, configure the following:

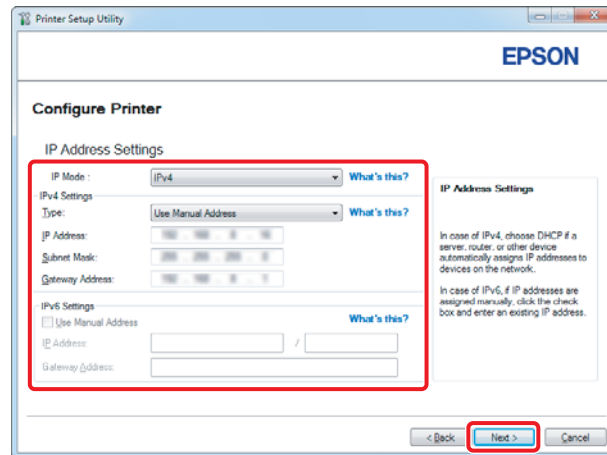
- a Select **Type**.
- b If you have selected **Use Manual Address** from **Type**, enter the following items:
 - ☐ **IP Address** of your printer
 - ☐ **Subnet Mask**
 - ☐ **Gateway Address**

When **Dual Stack** is selected, configure the following:

- a Configure **IPv4 Settings**.

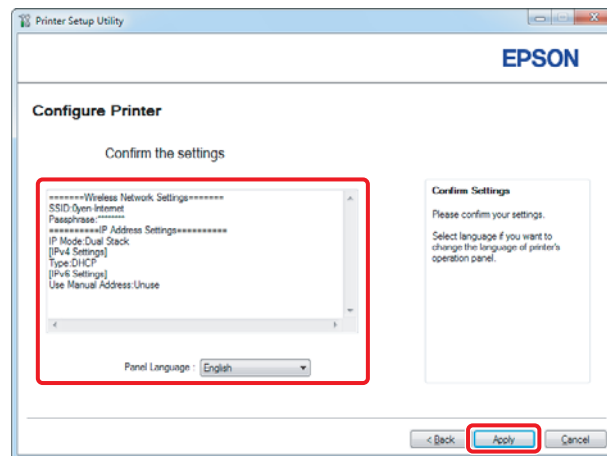
- b If you have selected the **Use Manual Address** check box under **IPv6 Settings**, enter the following items:

- ☐ **IP Address** of your printer
- ☐ **Gateway Address**

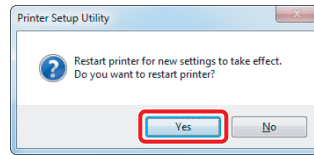


12. Click **Next**.

13. Ensure that the wireless settings are displayed, and then click **Apply**.



14. Click **Yes** to restart your printer.

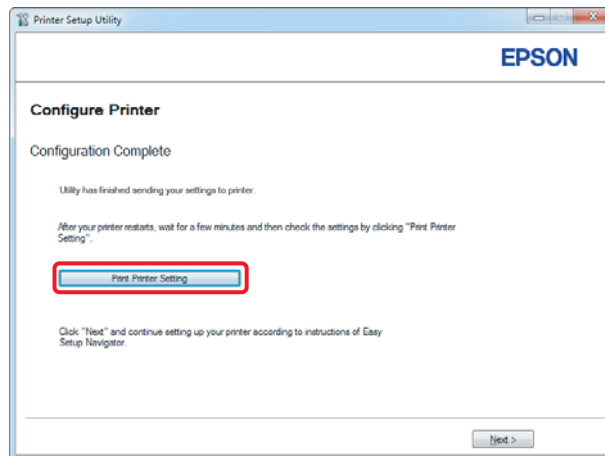


The Configuration Complete screen appears.

Note:

Wait a few minutes until the printer restarts to establish the wireless network.

15. Click **Print Printer Setting**, and confirm that "Link Quality" is shown as "Good", "Acceptable" or "Low" on the report.

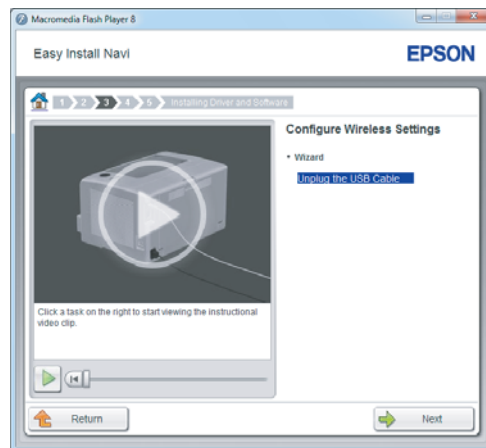


Note:

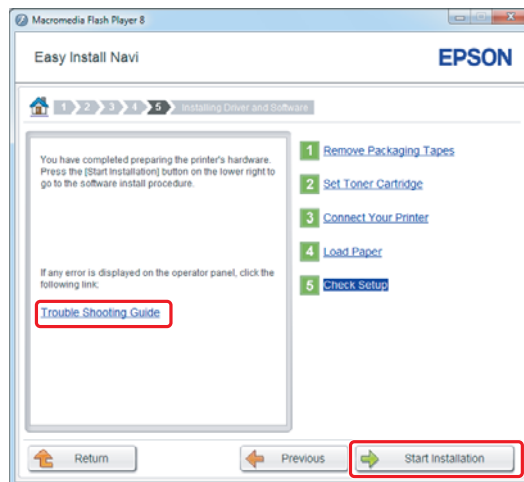
*When "Link Quality" is "No Reception", check if the wireless settings are correctly configured. To reconfigure the wireless settings, click **Next** on the Configuration Complete screen and then click **Return**.*

16. Click **Next**.

17. Follow the on-screen instructions until the Check Setup screen appears.



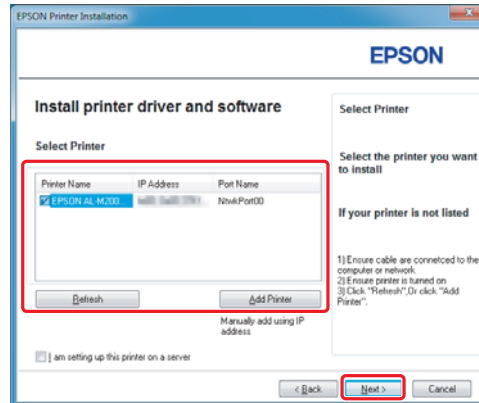
18. Confirm there are no errors displayed on the LCD panel, and then click **Start Installation**.



Note:

If you see any errors, click **Trouble Shooting Guide** and follow the instruction.

19. Check if the printer to be installed is listed in the Select Printer screen, and then click **Next**.

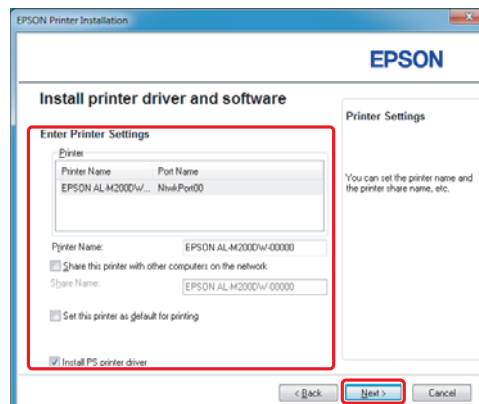


Note:

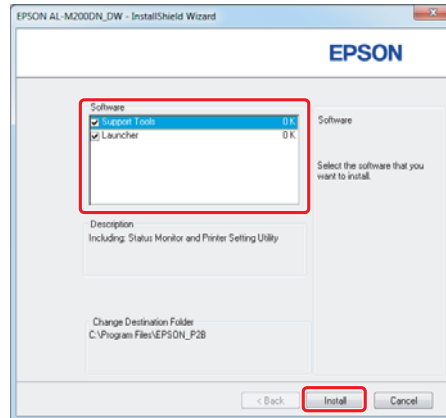
If the printer to be installed is not listed in the Select Printer screen, try the following steps:

- ☐ Click **Refresh** to update the information.
- ☐ Click **Add Printer**, and then enter the details of the printer manually.

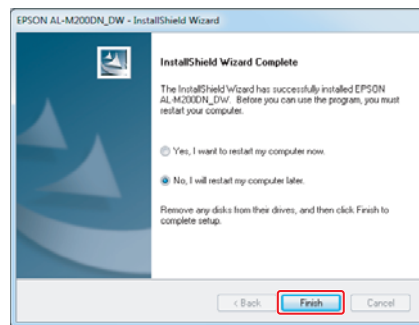
20. Select the required items on the Enter Printer Settings screen, and then click **Next**.



21. Select the software to be installed, and then click **Install**.



22. Select whether to restart your computer and click **Finish** to exit the wizard.



The wireless configuration is complete.

Ad Hoc Settings for Windows

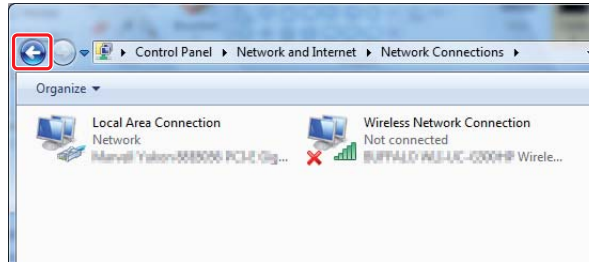
The procedure to set up Ad Hoc by computer depends on your OS, computer, and the manufacturer of your wireless devices. For details, refer to the documentation of the wireless devices or contact the manufacturer's customer support. The following section describes setup for Windows XP or Windows 7 standard settings.

Note:

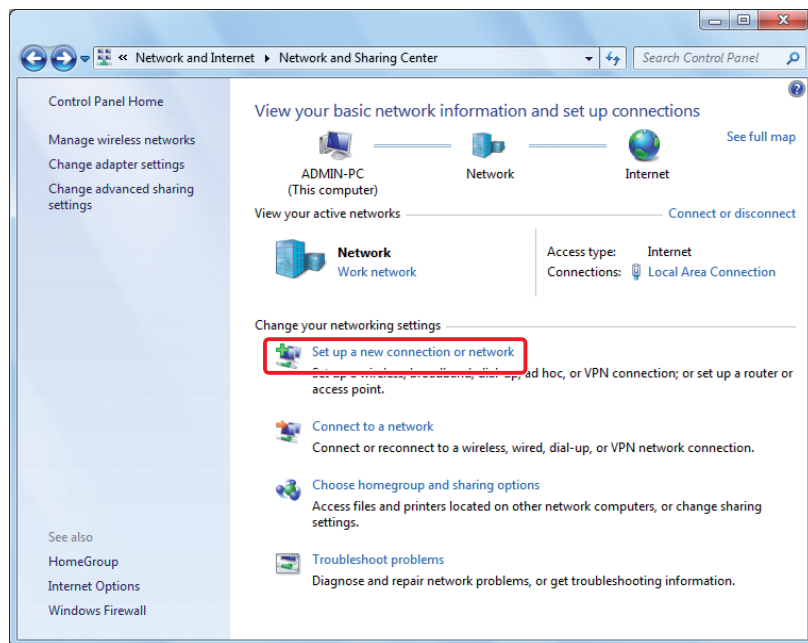
Even if you have a wireless network connection, the printer and computer may not be able to communicate in your environment when you make the Ad Hoc settings described in this section. Set up an Ad Hoc connection only when you use direct wireless communication between the printer and computer.

Windows 7

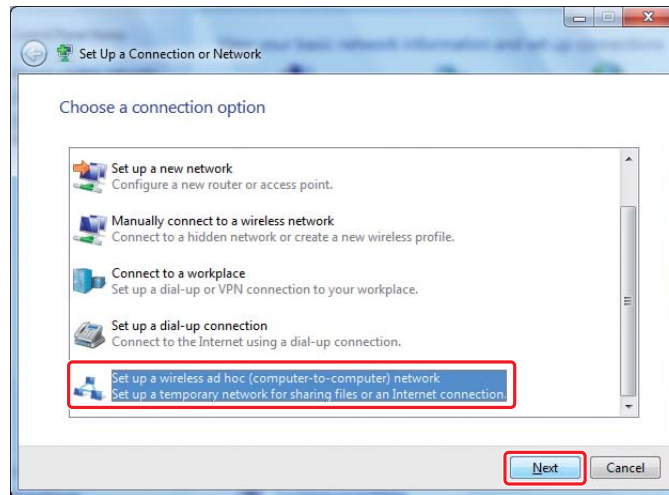
1. Return to the **Network and Sharing Center** window.



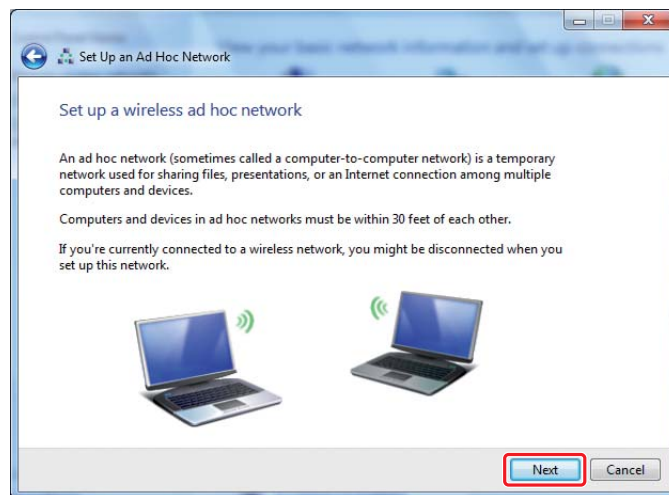
2. Click **Set up a new connection or network**.



3. Select **Set up a wireless ad hoc (computer-to-computer) network**, and then click **Next**.



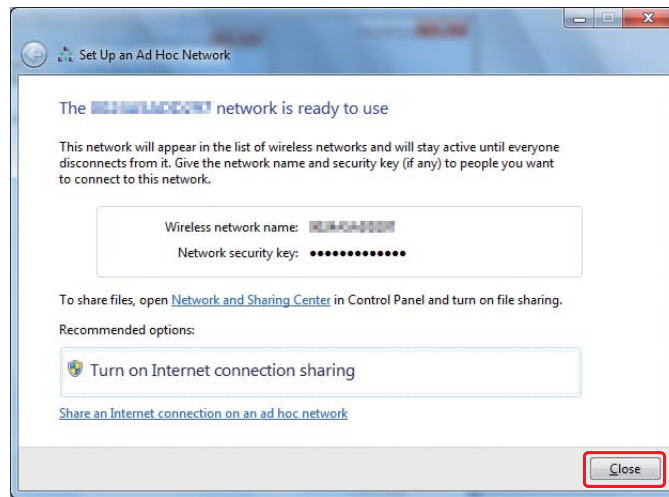
4. Click **Next**.



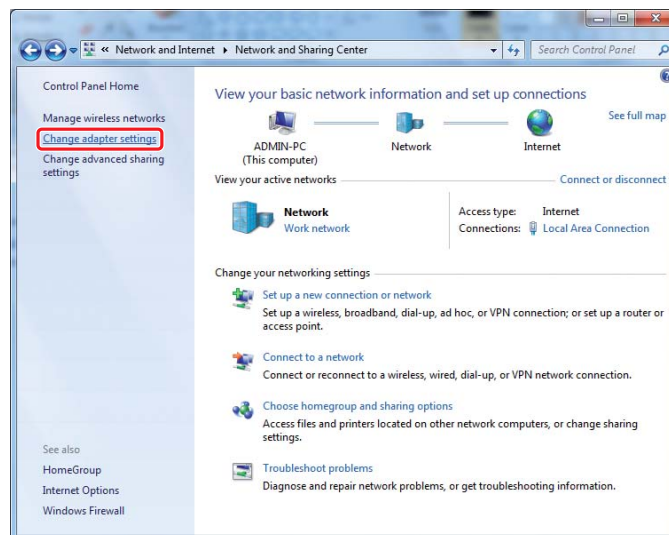
5. Refer to the following table to make settings, and then click **Next**.

a	Network name: Enter a name using any of the characters below. 0123456789 !"#\$%&'()*+,-./:; ABCDEFGHIJKLMNOPQRSTUVWXYZ abcdefghijklmnopqrstuvwxyz [\]^_`{ }~<=>?@
b	Security type: Select WEP.
c	Security key: Enter a word using 5 or 13 characters.
d	Save this network: Select this check box.

6. Click **Close**.



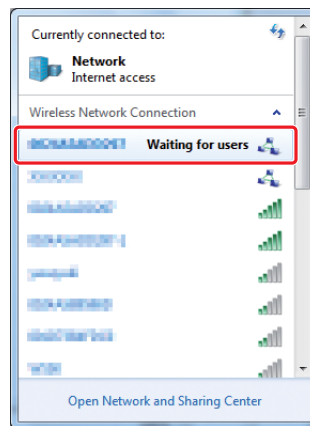
7. Click **Change adapter settings**.



8. Double-click the **Wireless Network Connection** icon.



9. Make sure the Ad Hoc connection has been registered.



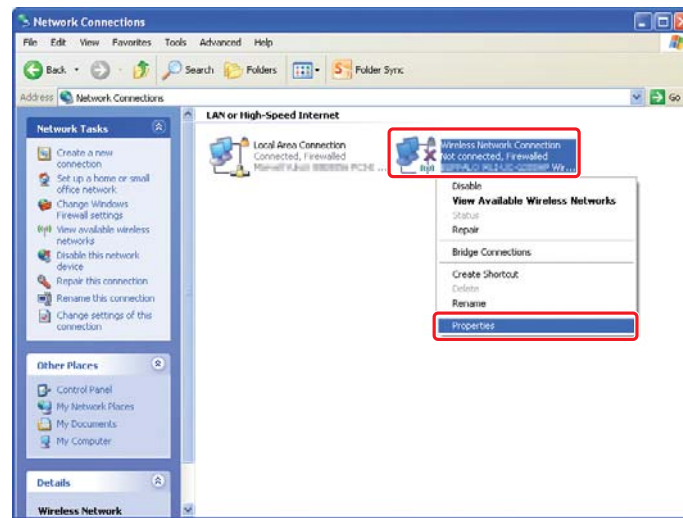
See “Configuring Wireless Settings (for Windows)” on page 5.

Windows XP

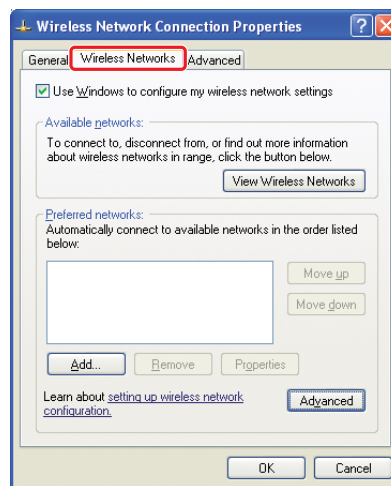
Note:

Depending on your environment, you may not be able to use the function to obtain an IP address automatically. In that case, you need to set a static IP address. For details, refer to the documentation of your computer or wireless devices.

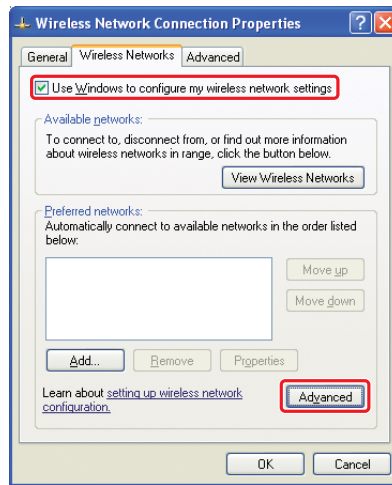
1. Right-click **Wireless Network Connection** and select **Properties**.



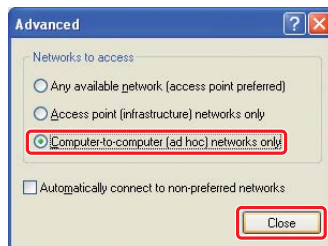
2. Select the **Wireless Networks** tab.



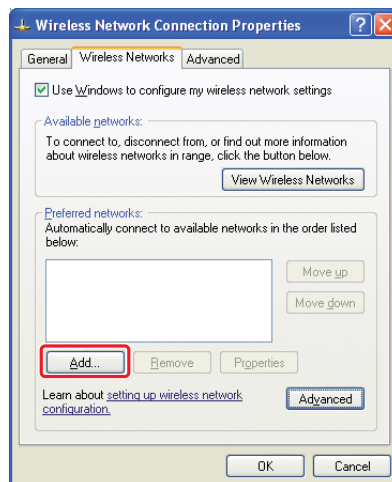
3. Ensure that the check box for **Use Windows to configure my wireless network settings** is selected, and then click **Advanced**.



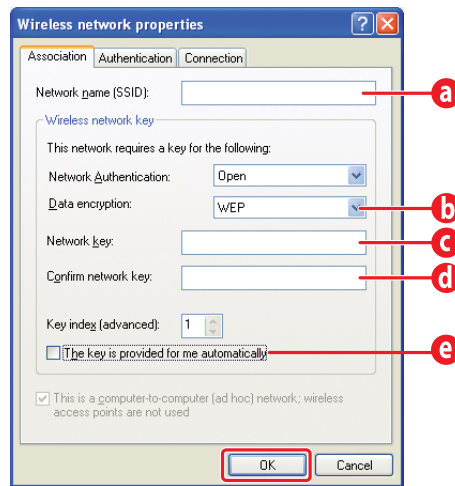
4. Select **Computer-to-computer (ad hoc) networks only**, and then click **Close**.



5. Click **Add**.

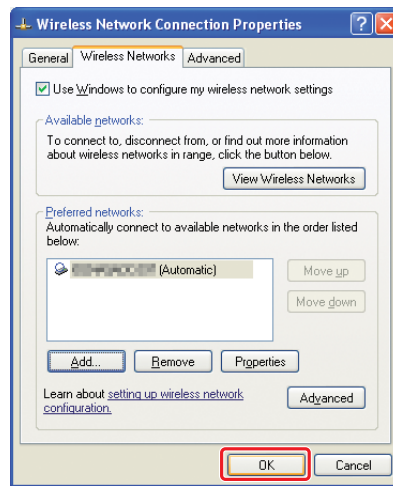


6. Refer to the following table to make settings, and then click **OK**.

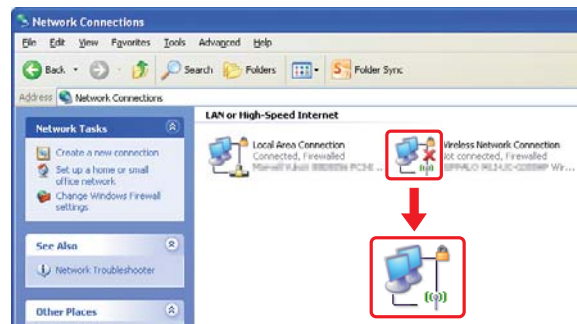


a	Network name (SSID): Enter a name using any of the characters below. 0123456789 !"#\$%&'()*+,-./:; ABCDEFGHIJKLMNOPQRSTUVWXYZ abcdefghijklmnopqrstuvwxyz []^_`{ }~<=>?@
b	Data encryption: Select WEP.
c	Network key: Enter a word using 5 or 13 characters.
d	Confirm network key: Enter the security key for confirmation again.
e	The key is provided for me automatically: Clear this box to enter the security key.


7. Click **OK**.



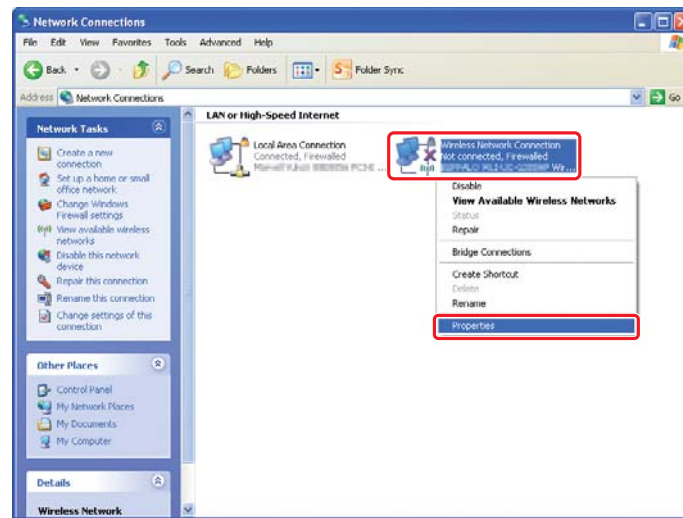
8. Wait until the  icon disappears.



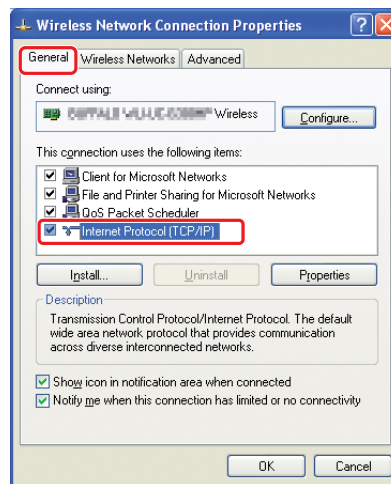
Go to “Configuring Wireless Settings (for Windows)” on page 5.

If the  icon does not disappear after 5 minutes, follow the following steps to set a static IP address.

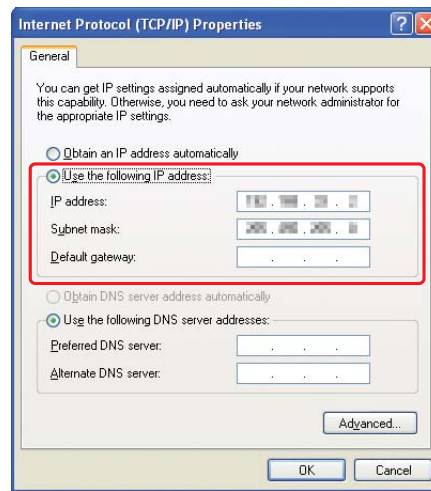
9. Right-click **Wireless Network Connection** and select **Properties**.



10. Double-click **Internet Protocol (TCP/IP)** from **General** tab.



11. Select **Use the following IP address**. Enter the value as the **IP address** and **Subnet mask** and click **OK**, and then click **OK** at the step 10 screen.

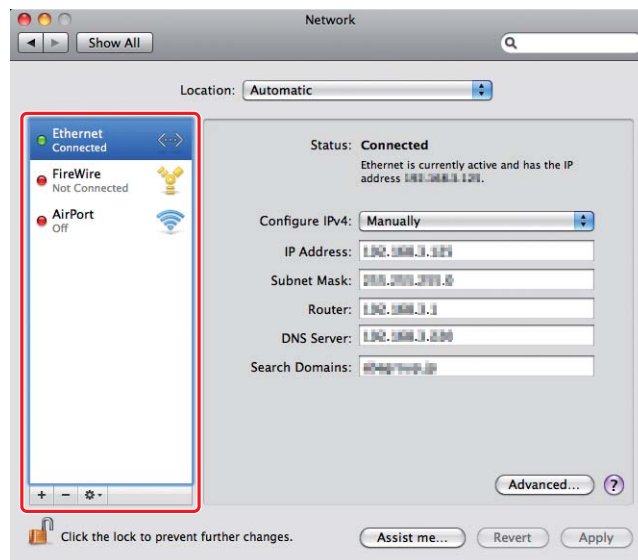






Go to “Configuring Wireless Settings (for Windows)” on page 5.

Configuring Wireless Settings (For Mac OS X)

This section shows the case of Mac OS X 10.6 as an example.

Check the connection condition and follow the following instructions.



AirPort		Wireless LAN (Wi-Fi) connection is available. See "Wi-Fi Setup" on page 27 or "Auto Setup With the Access Point" on page 28
		Wireless LAN (Ad Hoc) connection is available. See "Ad Hoc Setting on the Operator Panel" on page 30
Ethernet		Wired LAN connection is available. Refer to <i>User's Guide</i> for more information.
		Network connection is not available. You need to set up network environment for your Mac.






Configuring Wireless Settings

Wi-Fi Setup



You can manually configure wireless settings to connect your printer to an access point (infrastructure) network or computer-to-computer (ad-hoc) network.



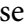

Connecting to Access Point Network


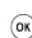
To configure the wireless settings through an access point such as a wireless router:

1. On the operator panel, press the  (**Menu**) button.
2. Select **Admin Menu**, and then press the  button.
3. Select **Network**, and then press the  button.
4. Select **Wi-Fi Setup**, and then press the  button.
5. Select the desired access point, and then press the  button.

If the desired access point does not appear:


- a Select **Manual Setup**, and then press the  button.
- b Enter the SSID, and then press the  button.





Use the  or  button to enter the desired value, and press the  or  button to move a cursor.

- c Select Infrastructure, and then press the  button.
- d Select an encryption type, and then press the  button.

Important:

Be sure to use one of the supported encryption methods to protect your network traffic.

6. Enter the WEP key or pass phrase, and then press the  button.

Use the  or  button to enter the desired value, and press the  or  button to move a cursor.

When the encryption type is WEP, select a transmit key after entering the WEP key.

7. Wait a few minutes until the printer restarts to establish the wireless network.
8. Print a System Settings page from the operator panel.

For more information, see the *User's Guide*.

9. Confirm that "Link Quality" is shown as "Good", "Acceptable" or "Low" on the report.

Note:

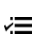


When "Link Quality" is "No Reception", check if the wireless settings are correctly configured.

Auto Setup With the Access Point

If the access point such as a wireless router supports the WPS, security settings can be made automatically.

WPS-PBC**Note:**

WPS-PBC is a method to authenticate and register devices required for wireless configuration, by pressing the button provided on the access point via wireless routers, and then performing WPS-PBC setting on the operator panel. This setting is available only when the access point supports WPS.

1. On the operator panel, press the  (**Menu**) button.
2. Select Admin Menu, and then press the  button.
3. Select Network, and then press the  button.

4. Select **WPS Setup**, and then press the **OK** button.
5. Select **Push Button Control**, and then press the **OK** button.
6. Select **Start**, and then press the **OK** button.
7. Press and hold the WPS button on the access point.
8. Wait a few minutes until the printer restarts to establish the wireless network.
9. Print a System Settings page from the operator panel.

For more information, see the *User's Guide*.

10. Confirm that "Link Quality" is shown as "Good", "Acceptable" or "Low" on the report.


Note:

When "Link Quality" is "No Reception", check if the wireless settings are correctly configured.

WPS-PIN

Note:

- ❑ *WPS-PIN is a method to authenticate and register devices required for wireless configuration, by entering PIN code to a printer and computer. This setting, performed through access point, is available only when the access points of your wireless router supports WPS.*
 - ❑ *Before WPS-PIN starts, you will need to enter your PIN code at the web page of the wireless access point. See the access point manual for the details.*
1. On the operator panel, press the **≡ (Menu)** button.
 2. Select **Admin Menu**, and then press the **OK** button.
 3. Select **Network**, and then press the **OK** button.
 4. Select **WPS Setup**, and then press the **OK** button.
 5. Select **PIN Code**, and then press the **OK** button.
 6. Take a note of PIN code displayed on the operator panel.
 7. Select **Start Configuration**, and then press the **OK** button.

8. If SSID selection screen appears, select the SSID, and then press the  button.
9. Enter the PIN code of the printer at the web page of the wireless access point.
10. Wait a few minutes until the printer restarts to establish the wireless network.
11. Print a System Settings page from the operator panel.

For more information, see the *User's Guide*.






12. Confirm that "Link Quality" is shown as "Good", "Acceptable" or "Low" on the report.

Note:



When "Link Quality" is "No Reception", check if the wireless settings are correctly configured.





Ad Hoc Setting on the Operator Panel



To configure the wireless settings for an ad-hoc connection where the wireless devices communicate directly with each other without an access point:

1. On the operator panel, press the  (**Menu**) button.
2. Select Admin Menu, and then press the  button.
3. Select Network, and then press the  button.
4. Select Wi-Fi Setup, and then press the  button.
5. Select the desired access point, and then press the  button.

If the desired access point does not appear:


- a Select Manual Setup, and then press the  button.
- b Enter the SSID, and then press the  button.



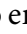
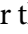
Use the  or  button to enter the desired value, and press the  or  button to move a cursor.

- c Select Ad-hoc, and then press the  button.
- d Select an encryption type, and then press the  button.

Important:

Be sure to use one of the supported encryption methods to protect your network traffic.

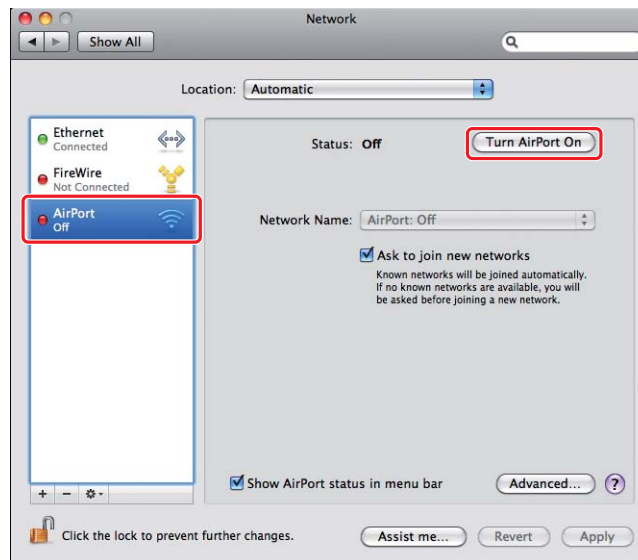
6. Enter the WEP key, and then press the  button.

Use the  or  button to enter the desired value, and press the  or  button to move a cursor.

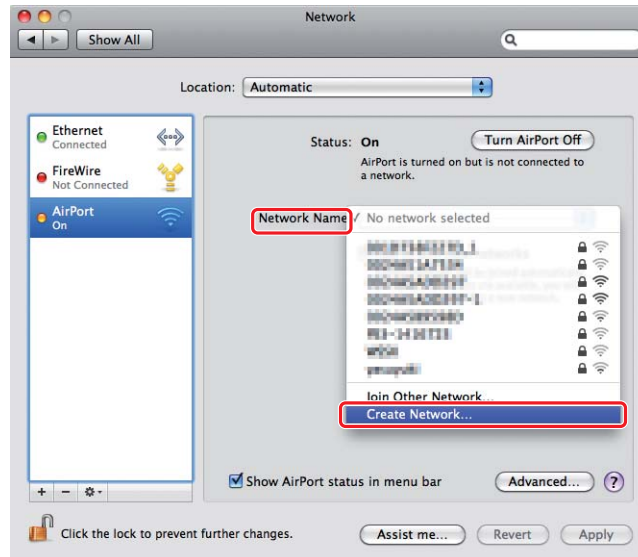
7. Select a transmit key.
8. Wait a few minutes until the printer restarts to establish the wireless network.

Ad Hoc Setting on Your Computer

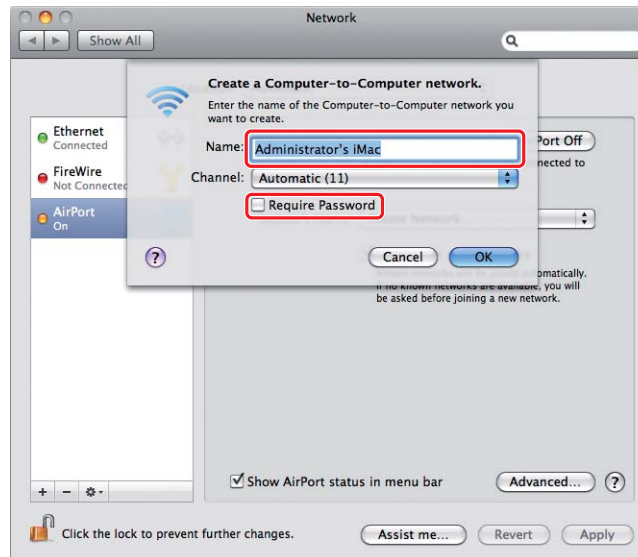
1. Select **AirPort**, and then click **Turn AirPort On**.



- From the **Network Name** list, select **Create Network**.



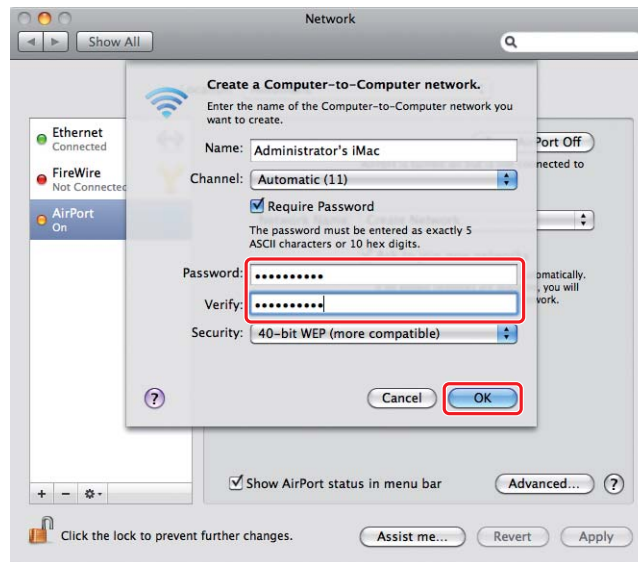
- Enter a network name, and then select the **Require Password** check box.



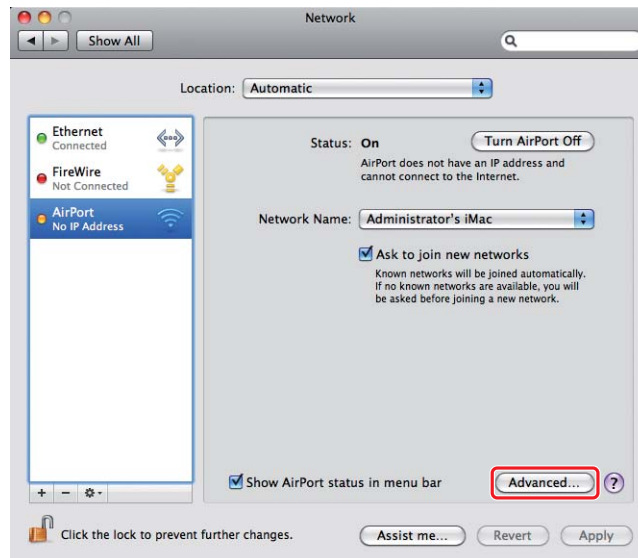
Note:

For later use, jot down the network name and password.

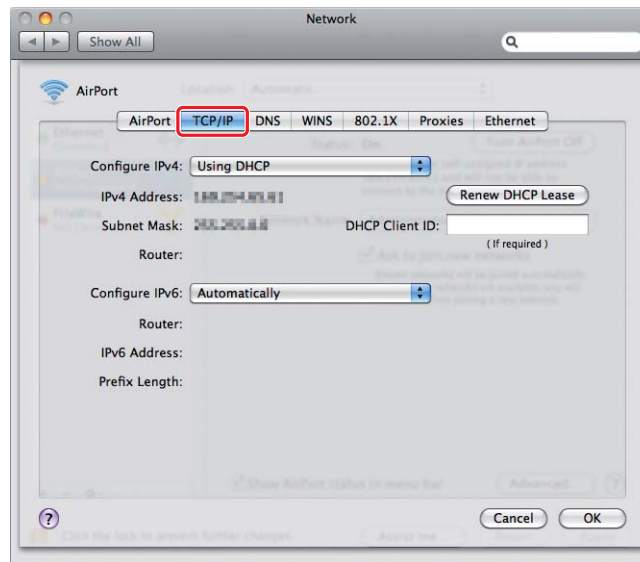
4. Enter a password, and then click **OK**.



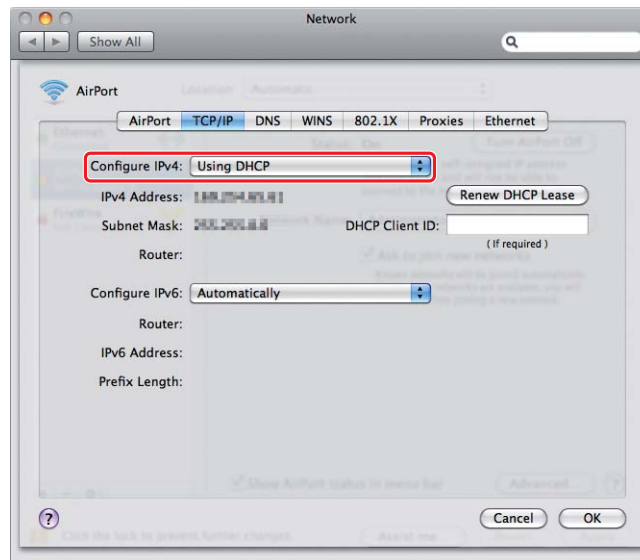
5. Click **Advanced**.



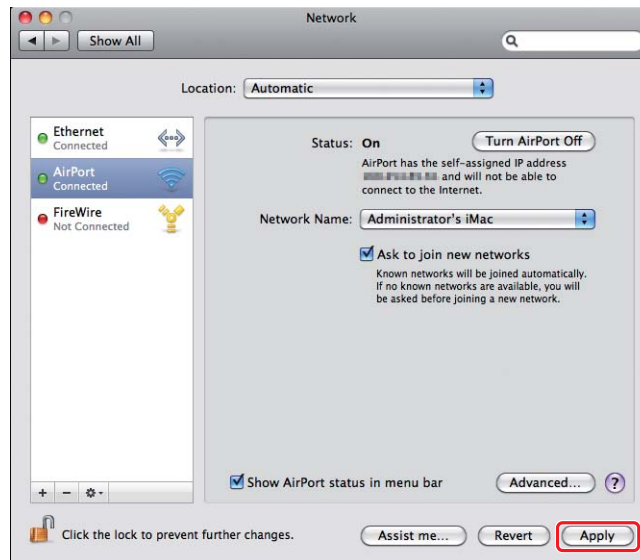
6. Click **TCP/IP**.



7. Select **Using DHCP** from the **Configure IPv4** list, and then click **OK**.



- Click **Apply**.



- Print a System Settings page from the operator panel.

For more information, see the *User's Guide*.

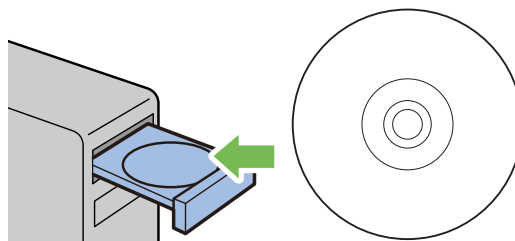
- Confirm that "Link Quality" is shown as "Good", "Acceptable" or "Low" on the report.

Note:

When "Link Quality" is "No Reception", check if the wireless settings are correctly configured.

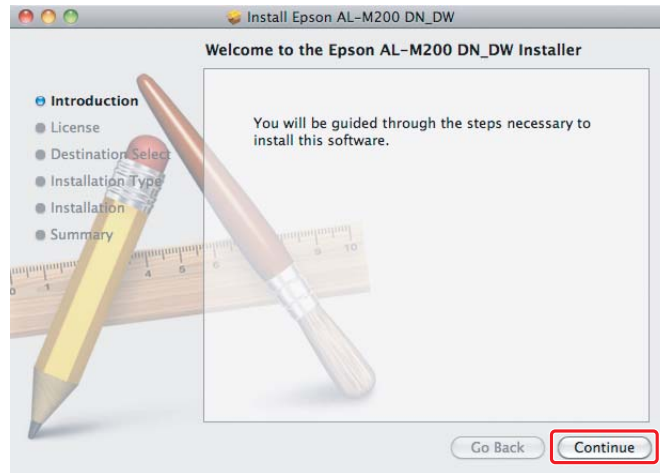
Installing Print Drivers on Computers

- Insert the Software Disc.

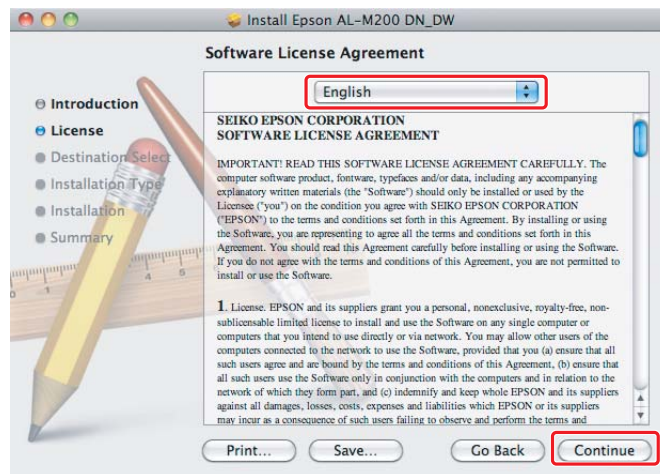


- Double-click the executable file for installing the software you want to install.

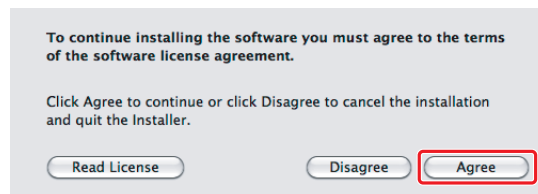
3. Click **Continue**.



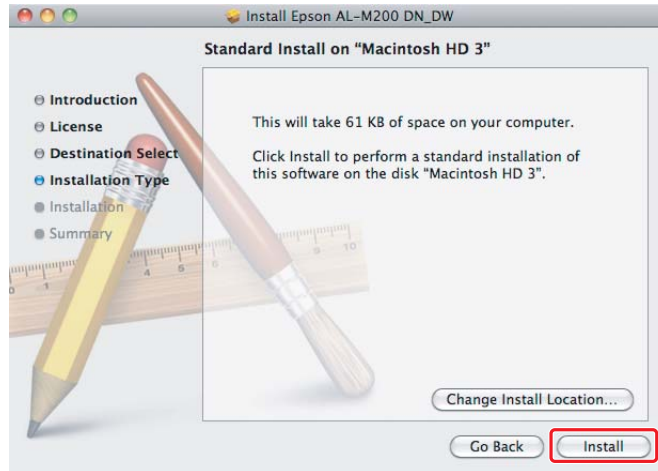
4. Select a language and click **Continue**.



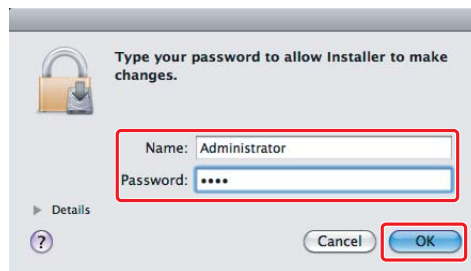
5. If you agree to the terms of the software license agreement, click **Agree**.



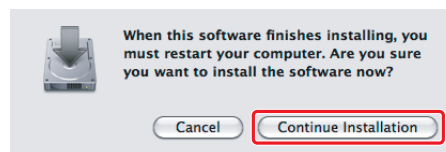
6. Click **Install**.



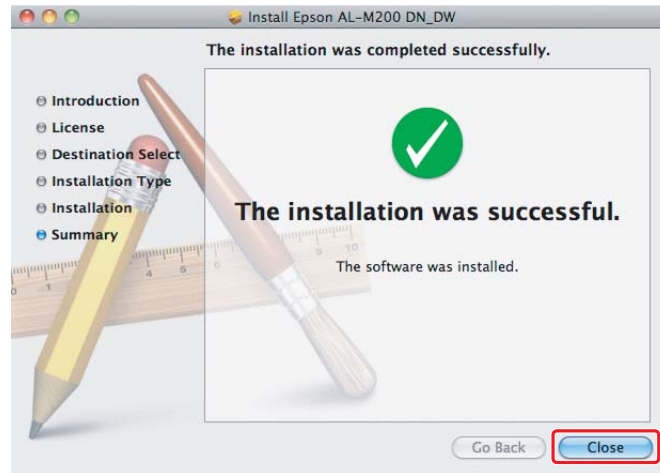
7. Enter the administrator's name and password, and click **OK**.



8. Click **Continue Installation**.



9. Click **Close**.

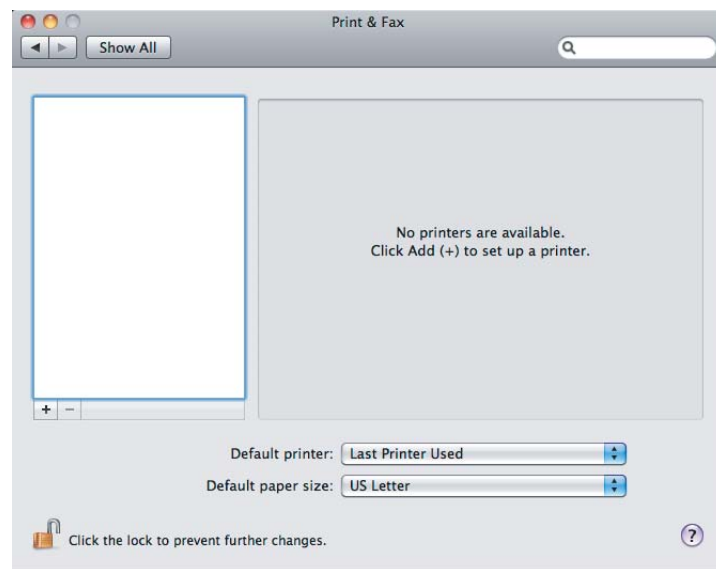


Adding a Printer

Note:

Confirm your computer is connected on the network.

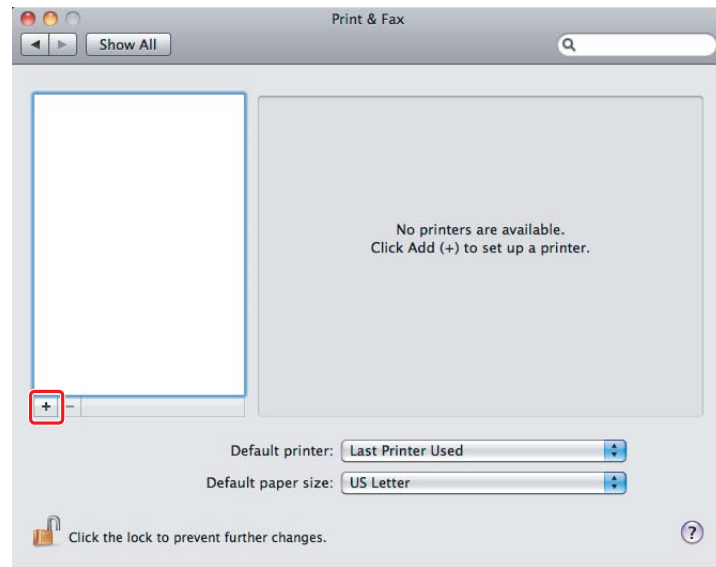
1. Open **Print & Fax** (**Print & Scan** for Mac OS X 10.7).



Note:

*You can find **Print & Fax** (**Print & Scan** for Mac OS X 10.7) in **System Preferences**.*

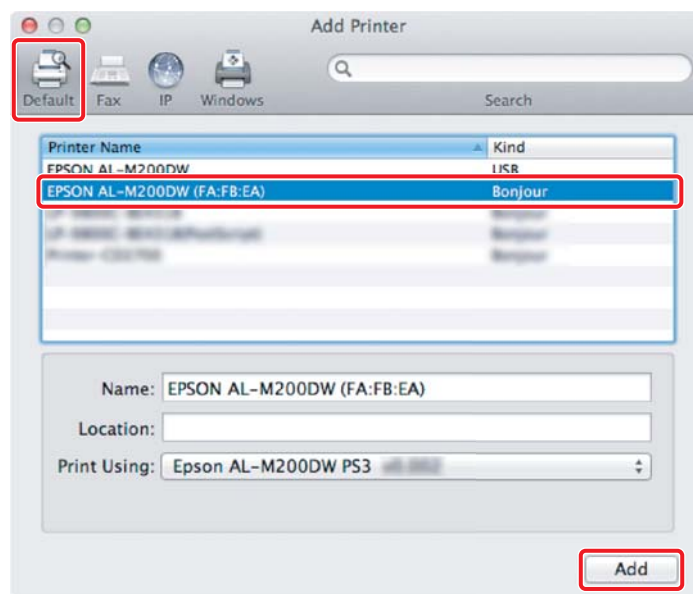
2. Click +.



3. Select the printer to be used.

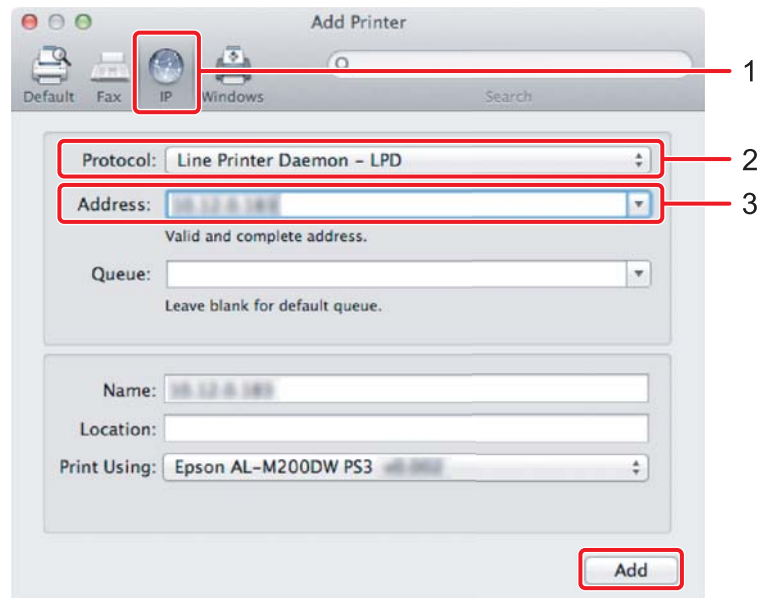
For **Bonjour**

Click **Default**, select the printer, and click **Add**.



For IP Printing

Specify the IP printing settings and click **Add**.



1	Click IP .
2	Select Line Printer Daemon - LPD for Protocol .
3	Enter the IP address of the printer.