

**SL-D700**

**Printer Driver Operation  
Guide**

---

## Copyrights and Trademarks

### ***Copyrights and Trademarks***

## Copyrights and Trademarks

No part of this publication may be reproduced, stored in a retrieval system, or transmitted in any form or by any means, electronic, mechanical, photocopying, recording, or otherwise, without the prior written permission of Seiko Epson Corporation. The information contained herein is designed only for use with this Epson printer. Epson is not responsible for any use of this information as applied to other printers.

Neither Seiko Epson Corporation nor its affiliates shall be liable to the purchaser of this product or third parties for damages, losses, costs, or expenses incurred by the purchaser or third parties as a result of accident, misuse, or abuse of this product or unauthorized modifications, repairs, or alterations to this product, or (excluding the U.S.) failure to strictly comply with Seiko Epson Corporation's operating and maintenance instructions.

Seiko Epson Corporation shall not be liable for any damages or problems arising from the use of any options or any consumable products other than those designated as Original Epson Products or Epson Approved Products by Seiko Epson Corporation.

Seiko Epson Corporation shall not be held liable for any damage resulting from electromagnetic interference that occurs from the use of any interface cables other than those designated as Epson Approved Products by Seiko Epson Corporation.

EPSON®, EPSON EXCEED YOUR VISION, EXCEED YOUR VISION and their logos are registered trademarks or trademarks of Seiko Epson Corporation.


Microsoft® and Windows® are registered trademarks of Microsoft Corporation.

Apple®, Macintosh®, Mac OS®, and OS X® are registered trademarks of Apple Inc.

General Notice: Other product names used herein are for identification purposes only and may be trademarks of their respective owners. Epson disclaims any and all rights in those marks.

© 2015 Seiko Epson Corporation. All rights reserved.

## Meaning of Symbols

 <b>Important:</b>	Important must be followed to avoid damage to this product.
<b>Note:</b>	Notes contain important information on the operation of this product.

## Operating System Versions

In this documentation, the following abbreviations are used.

## Copyrights and Trademarks

### **Windows refers to Windows 10, 8, 7.**

- Windows 10 refers to Windows 10 Pro.
- Windows 8.1 refers to Windows 8.1, Windows 8.1 Pro.
- Windows 8 refers to Windows 8, Windows 8 Pro.
- Windows 7 refers to Windows 7 Professional.

### **Macintosh refers to Mac OS X.**

- Mac OS X refers to Mac OS X 10.5.8/10.6.x/10.7.x/10.8.x/10.9.x/10.10.x.

## Contents

### Copyrights and Trademarks

Copyrights and Trademarks. . . . .	2
Meaning of Symbols. . . . .	2
Operating System Versions. . . . .	2

### Installing the printer driver

System Requirements. . . . .	5
Windows. . . . .	5
Mac OS X. . . . .	5
Installing the Printer Driver (Windows). . . . .	6
Installing the Printer Driver (Mac OS X). . . . .	10

### Printer Driver Functions

Settings Screen (Windows). . . . .	13
<b>Main</b> screen. . . . .	13
<b>Status Monitor</b> screen. . . . .	15
<b>Driver Settings</b> Screen. . . . .	15
Settings Screen (Mac OS X). . . . .	17
<b>Page Setup</b> Screen. . . . .	17
<b>Color Matching</b> screen. . . . .	18
<b>Print Settings</b> screen. . . . .	19

### Basic Printing Methods (Windows)

Printing from PhotoShop. . . . .	20
Canceling Printing. . . . .	24

### Basic Printing Methods (Mac OS X)

Printing from PhotoShop. . . . .	25
Canceling Printing. . . . .	29

### Various Print Functions

Color Management. . . . .	30
Color Management Settings. . . . .	30
Setting colors manually (Windows only). . . . .	31
Color management from the application (no color management). . . . .	34
Color management from the printer driver (ICM) (Windows). . . . .	36
Color management by printer driver (ColorSync) (Mac OS X). . . . .	38
Borderless Printing. . . . .	40
Setting Procedure. . . . .	41

Printing on Non-regular Paper Sizes. . . . .	44
Setting Procedure. . . . .	44

### Troubleshooting

When an Error Message Is Displayed. . . . .	47
You cannot print (because the printer does not work). . . . .	47
The printer sounds like it is printing, but nothing prints. . . . .	48
The prints are not what you expected. . . . .	48

### Updating Printer Driver (Windows)

### Updating Printer Driver (Mac OS X)

### Uninstalling the Printer Driver (Windows)

### Uninstalling the Printer Driver (Mac OS X)

## Installing the printer driver

---

# Installing the printer driver

---

## System Requirements

The following operating systems support the printer driver.

Make sure your computer meets the following requirements.

---

### Windows

Operating system	Windows 7 Professional/Ultimate (SP1) 32/64 bit
	Windows 8 Pro 32/64 bit
	Windows 8.1 Pro 32/64 bit
	Windows 10 Pro 32/64 bit
CPU	Depends on the application
Memory	4 GB or more *1 (8 GB or more recommended *2)
HDD	64 GB or more free space

\*1 When connecting four printers and printing at a paper size of 102 x 89 mm (4 x 3.5 inch) to 127 x 178 mm (5 x 7 inch).

\*2 When connecting four printers and printing at a paper size larger than 127 x 178 mm (5 x 7 inch).

---

### Mac OS X

Operating system	Mac OS X 10.5.8/10.6.x/10.7.x/10.8.x/10.9.x/10.10.x
CPU	Depends on the application
Memory	1 GB or more
HDD	32 GB or more free space

## Installing the printer driver

## Installing the Printer Driver (Windows)

The Maintenance Tool is also installed with the printer driver. After installing, you need to update the paper information in the Maintenance Tool.


**Important:**

- You must log on as a user with administrative privileges.
- If an Administrator password or confirmation is requested, enter the password and then continue with the operation.

**1**

Turn off the printer and then connect the printer to a computer with a USB cable.


**2**

Insert the software disc, and then double-click Setup.exe in the **SystemApplication - Windows** folder.

**3**

Follow the on-screen instructions to install.

The printer driver name is registered as "EPSON SL-D700 EX". Specify this name when printing from an application.



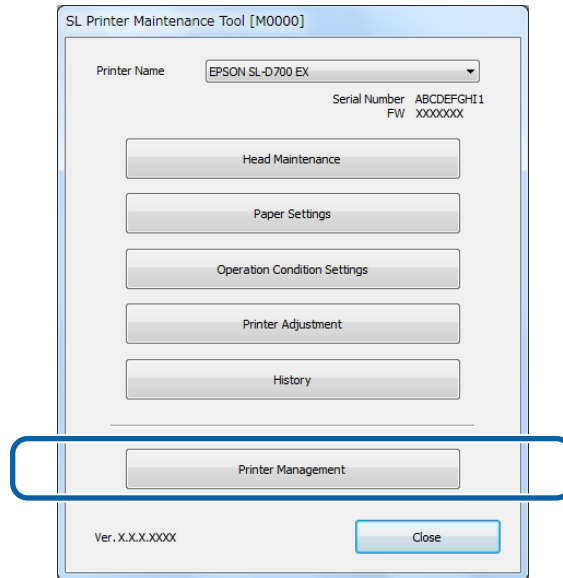
When the printer driver installation is complete, update the paper information (register information for a paper type file to the printer).

## Installing the printer driver

**4** Start the Maintenance Tool.

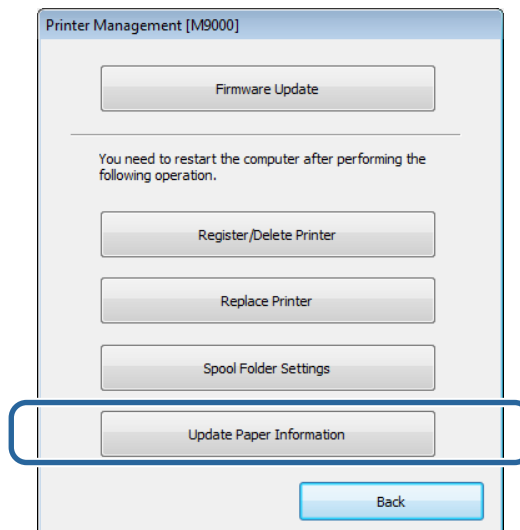
Click **Start - All Programs - EPSON - EPSON SL-D700 - SL Printer Maintenance Tool**.

**5** Click **Printer Management**.



The **Printer Management** screen is displayed.

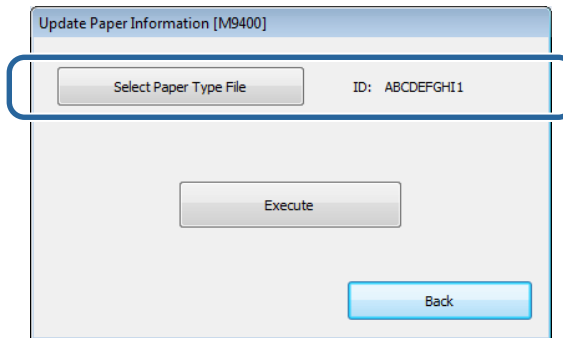
**6** Click **Update Paper Information**.



The **Update Paper Information** screen is displayed.

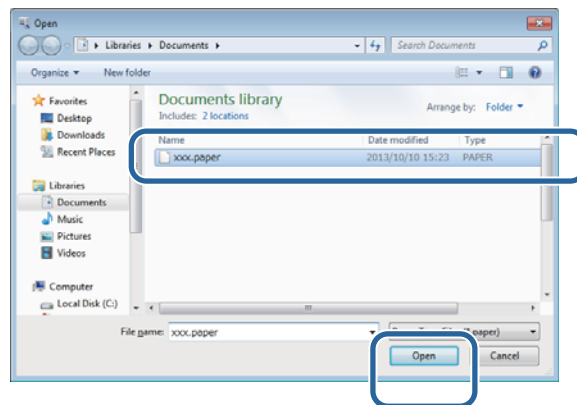
## Installing the printer driver

### 7 Click **Select Paper Type File**.



The select file screen is displayed.

### 8 Select a paper type file, and then click **Open**.



The ID for the selected paper type file is displayed.

**!** **Important:**  
Make sure you select a paper type file.

**Note:**  
Contact your local dealer for information on acquiring paper type files.

### 9 Check that the printer is connected and turned on.

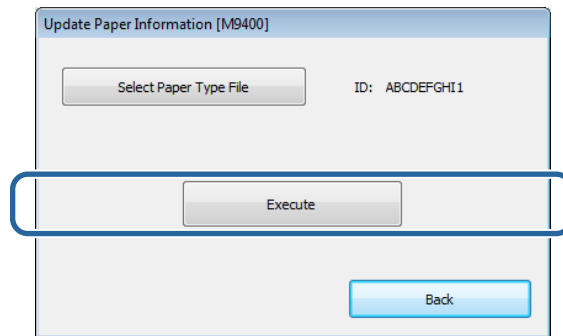
When multiple printers are connected, check all of the printers.

**!** **Important:**  
Do not print while during updating the paper information.



## Installing the printer driver

**10** Click **Execute**.



The paper information is updated.

A confirmation message is displayed when the update is complete.

## Installing the printer driver

# Installing the Printer Driver (Mac OS X)

The Maintenance Tool is also installed with the printer driver.

**Important:**

- You must log on as a user with administrative privileges.
- If an Administrator password or confirmation is requested, enter the password and then continue with the operation.
- Update the paper information when you install the printer driver.

**1**

Turn off the printer and then connect the printer to a computer with a USB cable.

**2**

Insert the software disc, and then double-click SL Printer Setup.dmg in the **SystemApplication - Mac OS X** folder.

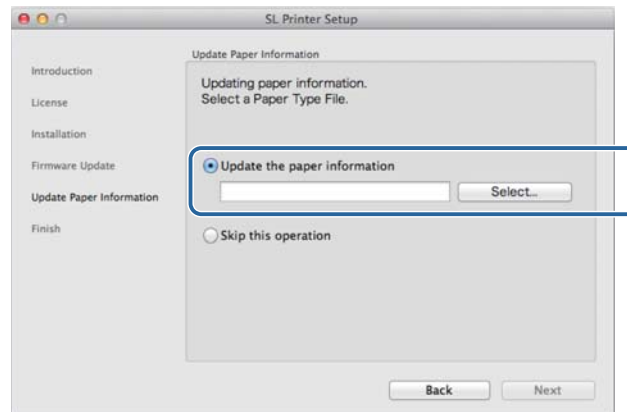
**3**

When the screen is displayed, double-click **SL Printer Setup.app**.

## Installing the printer driver

**4** Follow the on-screen instructions to install.

When the following screen is displayed, click **Update the paper information - Select**, and then select the paper type file.



**Note:**

Contact your local dealer for information on acquiring paper type files.

---

# Printer Driver Functions

---

The printer driver coordinates print instructions from another application to the printer.

The main functions of the printer driver are described below.

- ❑ Converts print data received from applications into printable data and sends it to the printer.
- ❑ Set print conditions such as the paper type and size on the printer driver's Settings screen.
- ❑ Windows only ;  
Start the Maintenance Tool, and then from your computer you can perform adjustment and maintenance operations such as checking the printer's status, making settings, performing head cleaning and so on.

 "Maintenance Tool Operation Guide"

## Printer Driver Functions

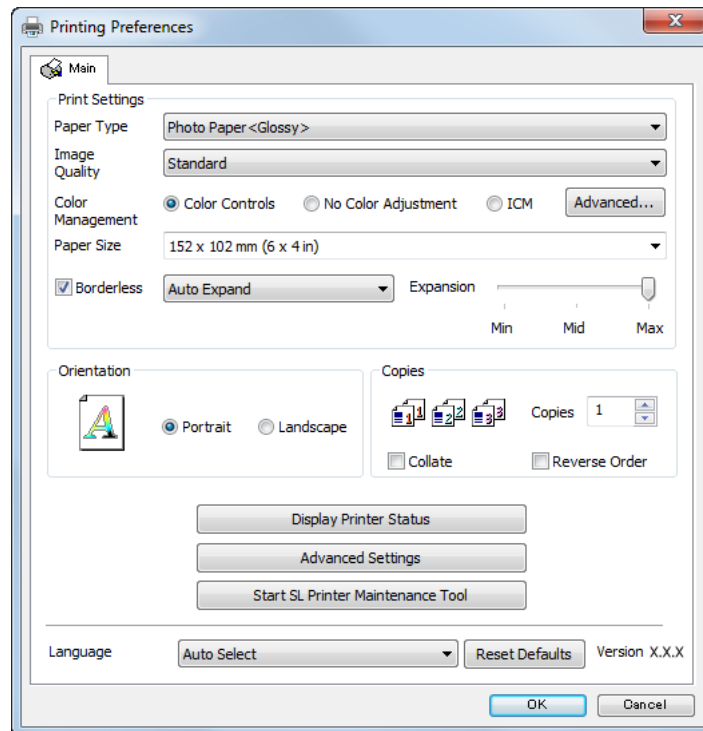
# Settings Screen (Windows)

## Main screen

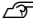
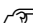
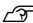
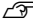
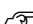

On the **Main** screen, you can set items and the print quality to create the best prints possible.

For more information on displaying the printer driver's **Main** screen, see "Basic Printing Methods (Windows)".

 ["Basic Printing Methods \(Windows\)"](#) on page 20



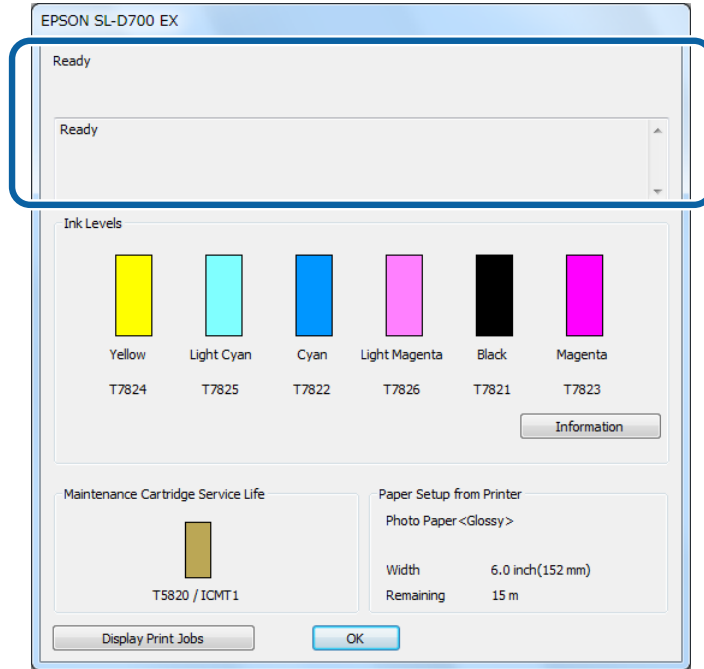
## Printer Driver Functions

Setting Item		Explanation
Print Settings	Paper Type	Select the paper type to match the paper being used.
	Image Quality	You can select the print quality from <b>High Speed</b> (360 dpi), <b>Standard</b> (720 dpi), or <b>High Image Quality</b> (1440 dpi). Normally, select <b>Standard</b> . If you want to print using high image quality, set <b>High Image Quality</b> . If you want to print quickly, set <b>High Speed</b> . When <b>High Speed</b> is set, the printing speed is quicker, however the quality may decline a little.
	Color Management	Select the color management method used when printing.  <a href="#">"Color Management" on page 30</a>
	Paper Size	Set the paper size used for printing. Paper sizes not in the list can be registered to <b>User Defined</b> .  <a href="#">"Printing on Non-regular Paper Sizes" on page 44</a>
	Borderless	Select to print without borders (margins). Select <b>Auto Expand</b> or <b>Retain Size</b> as the borderless method. When <b>Auto Expand</b> is selected, set the amount of enlargement.  <a href="#">"Borderless Printing" on page 40</a>
	Expansion	When <b>Auto Expand</b> is selected in <b>Borderless</b> , you can set the amount of enlargement with the slider.
Orientation		Click <b>Portrait</b> or <b>Landscape</b> to select the print direction. Make sure you match this with the direction set in the application.
Copies	Copies	Set the number of copies.
	Collate	Select when printing multiple copies of a multi-page document to output collated copies.
	Reverse Order	Prints pages in reverse order.
Display Printer Status		Displays the printer's status. Allows you to check the amount of ink remaining, the free space in the maintenance cartridge, and the paper settings on the printer.  <a href="#">"Settings Screen (Windows)" on page 13</a>
Advanced Settings		This should not normally be used. Only use this when specified in an application. <b>Driver Settings</b> is displayed.  <a href="#">"Driver Settings Screen" on page 15</a>
Start SL Printer Maintenance Tool		Starts the Maintenance Tool. See the "Maintenance Tool Operation Guide" for more details on the Maintenance Tool.  "Maintenance Tool Operation Guide"
Language		Select the printer driver's display language. <b>Auto Select</b> automatically selects the language to match the operating systems language.
Reset Defaults		Returns all settings to their defaults. Paper sizes saved in <b>User Defined</b> are not deleted.

**Printer Driver Functions**

**Status Monitor screen**

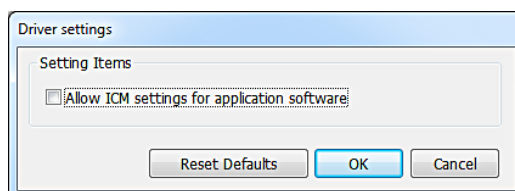
On the **Main** screen, click **Display Printer Status** to display the **Status Monitor** screen.



Setting Item	Explanation
Printer Status	Displays the printer's status.
Ink Levels	Displays how much ink remains.
Information	Displays detailed information for each ink cartridge.
Maintenance Cartridge Service Life	Displays the free space in the maintenance cartridge. The capacity is reset automatically when the maintenance cartridge is replaced.
Paper Setup from Printer	Displays the type, width, and the remaining amount of loaded paper. Set the Paper Type and the Paper Level in the Maintenance Tool.
Display Print Jobs	Displays the print queue list. You can delete print jobs from here.

**Driver Settings Screen**

On the **Main** screen, click **Advanced Settings** to display the **Driver Settings** screen.



**Printer Driver Functions**

<b>Setting Item</b>	<b>Explanation</b>
Allow ICM settings for application software	Select this if the application's ICM settings have been enabled and the print results are not as you expected. This does not normally need to be selected.
Reset Defaults	Returns settings to their defaults.



## Printer Driver Functions

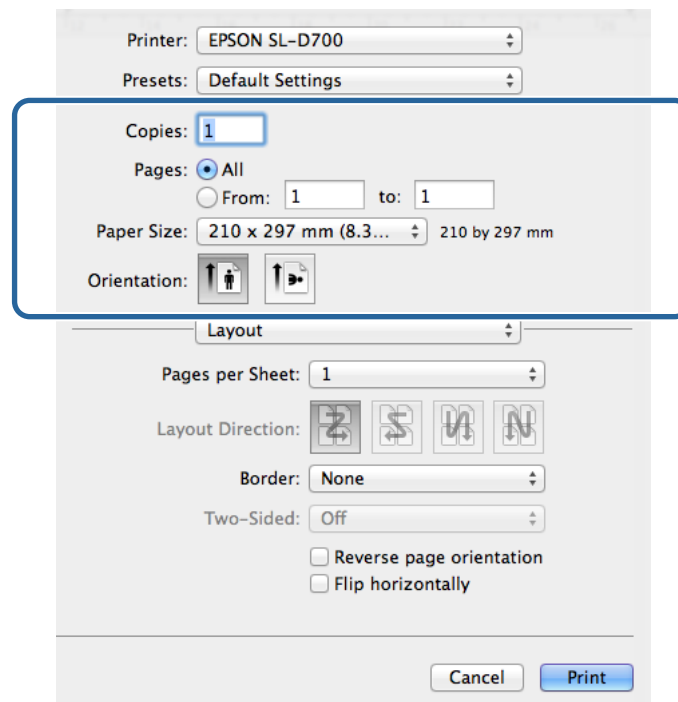
# Settings Screen (Mac OS X)


## Page Setup Screen

On the **Page Setup** screen you can set the paper size and direction.

For more information on displaying the printer driver's **Page Setup** screen, see "Basic Printing Methods (Mac OS X)".

 ["Basic Printing Methods \(Mac OS X\)" on page 25](#)

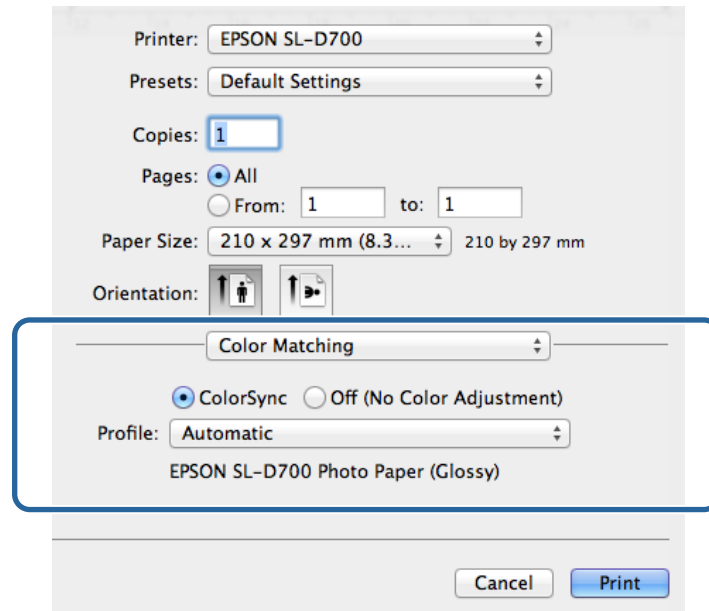


Setting Item	Explanation
Copies	Set the number of copies.
Pages	Set the print range.
Paper Size	Set the paper size used for printing. Paper sizes not in the list can be registered to <b>User Defined</b> .  <a href="#">"Printing on Non-regular Paper Sizes" on page 44</a>
Orientation	Set the paper direction.

## Printer Driver Functions

### Color Matching screen

When selecting **Color Matching** from the list, you can set ColorSync from the color management system provided in Mac OS X.

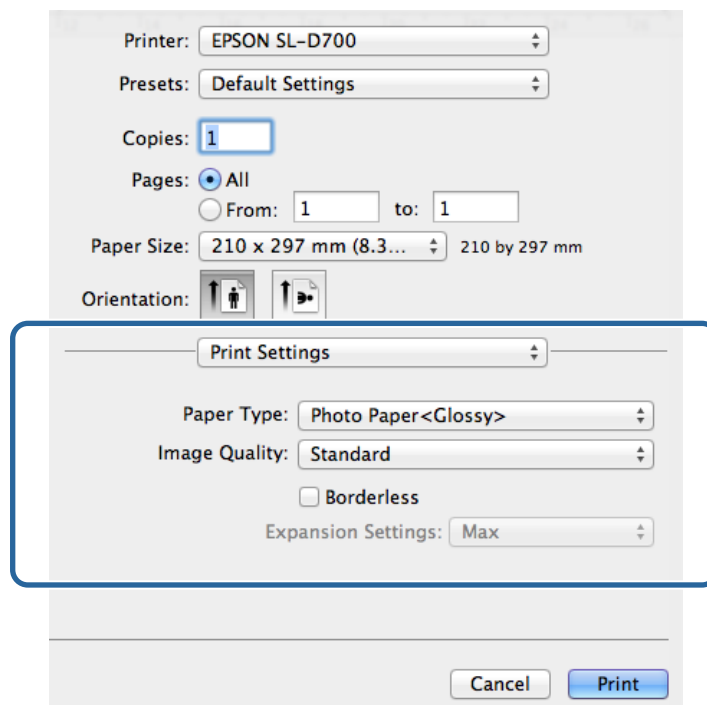


Setting Item	Explanation
ColorSync / Off (No Color Adjustment)	Set whether or not to use ColorSync. You can use ColorSync when printing from applications that support color management.
Profile	Set the printer profile used for color management.

## Printer Driver Functions

### Print Settings screen

When selecting **Print Settings** from the list, you can set the paper type and image quality.



Setting Item	Explanation
Paper Type	Select the paper type to match the paper being used.
Image Quality	You can select the print quality from <b>High Speed</b> (360 dpi), <b>Standard</b> (720 dpi), or <b>High Image Quality</b> (1440 dpi). Normally, select <b>Standard</b> . If you want to obtain higher quality prints, set <b>High Image Quality</b> . If you want to print quickly, set <b>High Speed</b> . When <b>High Speed</b> is set, the printing speed is quicker, however the quality may decline a little.
Borderless	Select to print without borders (margins). <a href="#">🔗 "Borderless Printing" on page 40</a>
Expansion Settings	When performing <b>Borderless</b> printing, set the amount of enlargement to <b>Max</b> , <b>Mid</b> , or <b>Min</b> .

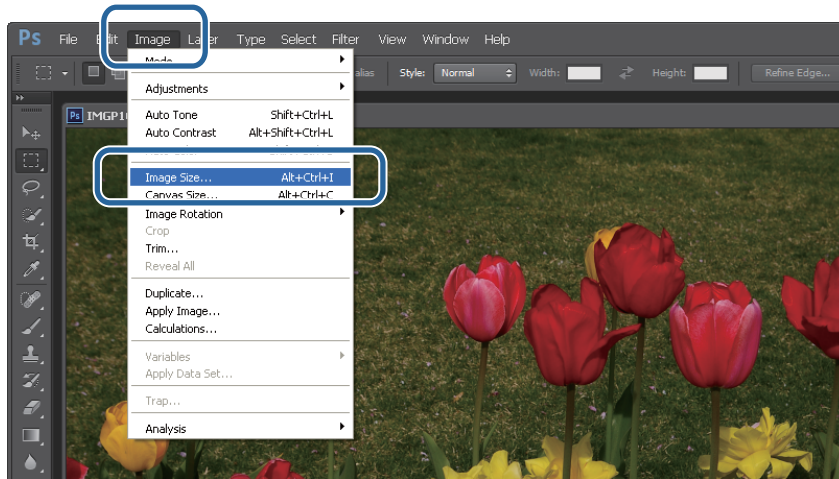
# Basic Printing Methods (Windows)

## Printing from PhotoShop

This section uses Adobe Photoshop CS6 as an example of printing image data on your computer.

Operations may differ depending on the application software being used. See the manual supplied with the application software for more details.

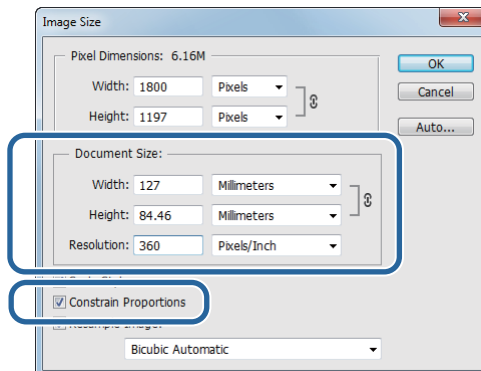
- 1 Start Adobe Photoshop CS6, and open an image.
- 2 Click **Image Size** from the **Image** menu to display the **Image Size** screen.



- 3 Set the image size and resolution.  
Select **Constrain Proportions**, and match the **Width** and **Height** settings to the paper size.

Set the **Resolution**. In this example, we set 360 pixel/inch.

When you have finished making settings, click **OK**.



## Basic Printing Methods (Windows)

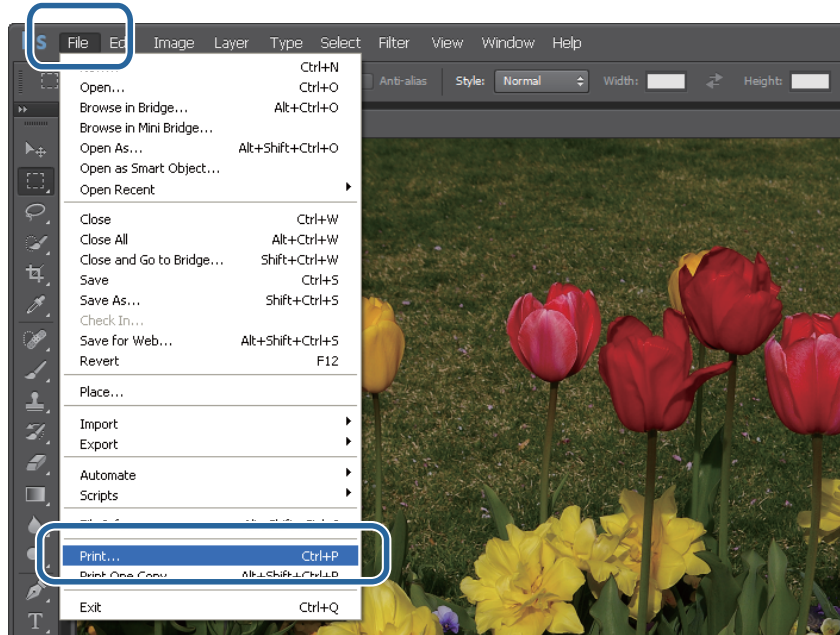
### Note:

You can create clear print outs by setting the **Resolution** so that a multiple of this setting is the printer's **Image Quality** resolution.

We recommend setting multiples of 180 pixel/inch because the settings for **Image Quality** are either **High Speed** (360 dpi), **Standard** (720 dpi), or **High Image Quality** (1440 dpi).

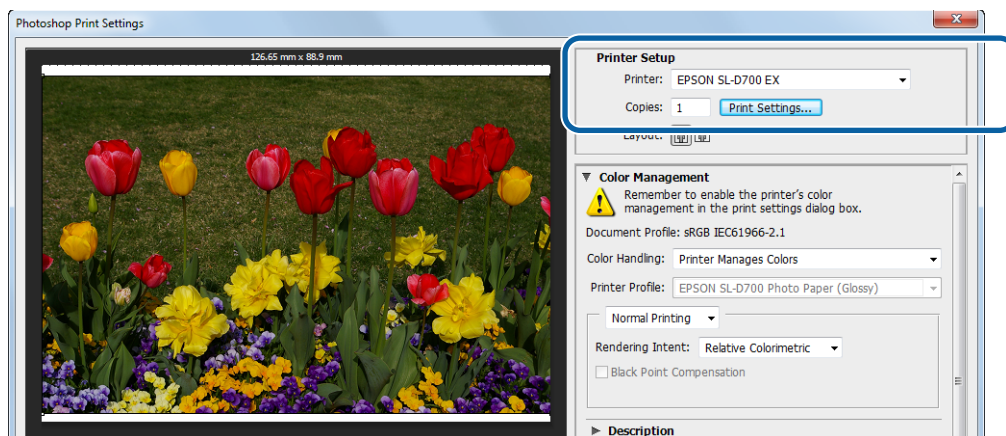
4

Click **Print** from the **File** menu to display the **Print Settings** screen.



5

Select this printer from **Printer** on the **Main** screen, and then click **Print Settings**.



6

Make the necessary settings.

**Paper Type:** Set the paper being used.

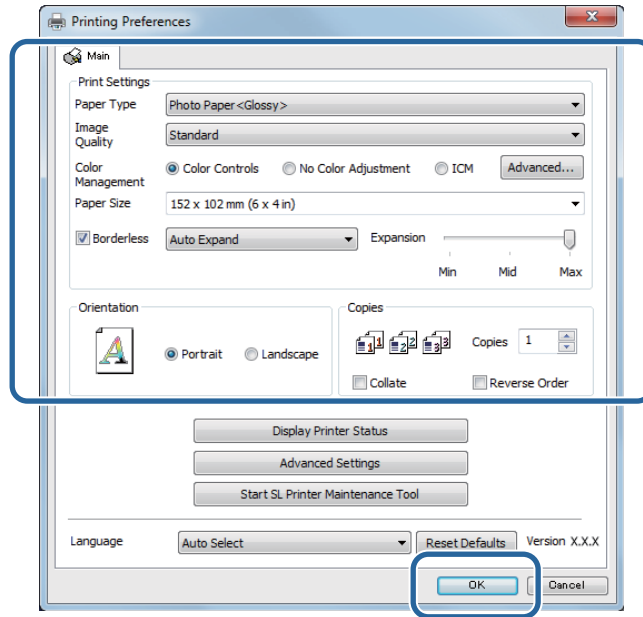
**Image Quality:** Normally set **Standard**. If you want to print using high image quality, set **High Image Quality**. If you want to print quickly, set **High Speed**.

**Paper Size:** Set the size of the paper used for printing. Make sure this is the same as the image size you set in step 3.

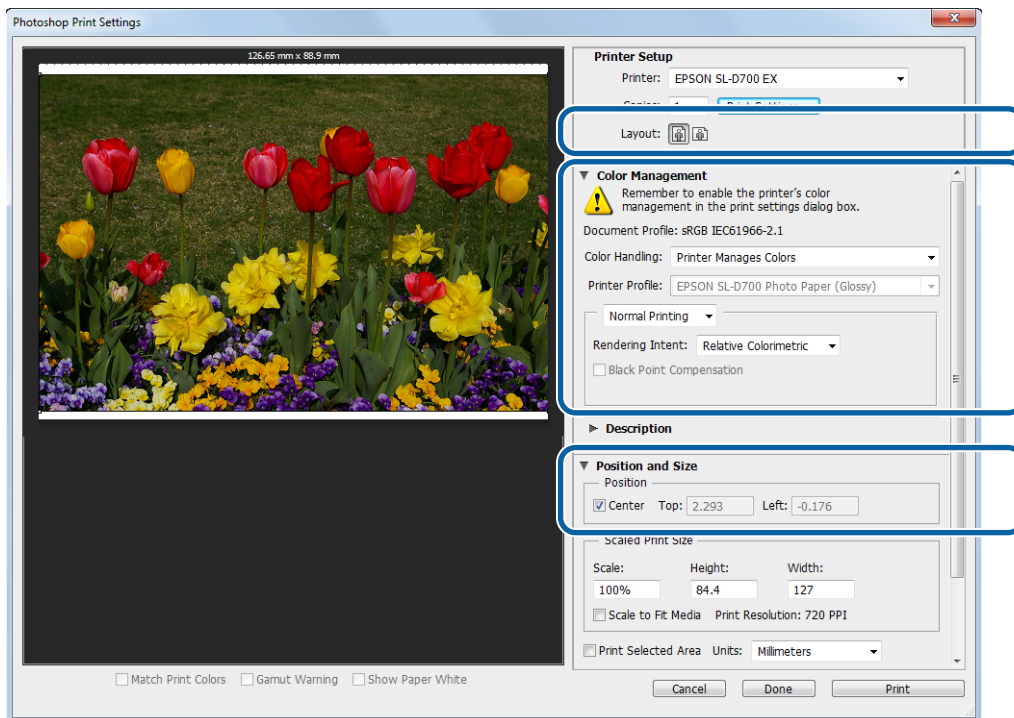
### Basic Printing Methods (Windows)

 “Settings Screen (Windows)” on page 13

When you have finished making settings, click **OK**.



- 7 Set each item, such as color management and print position, while checking the image displayed on the **Print Settings** screen.



## Basic Printing Methods (Windows)

**Note:**

- ❑ When the printer driver's **Color Management** is set to **Color Controls** (default), select **Document** in **Color Management**, and then select **Printer Manages Colors** in **Color Handling**.

 ["Color Management" on page 30](#)

- ❑ When performing detailed color management using the Photoshop functions, match the **Color Management** conditions to these settings. See the manual supplied with Photoshop for more details on each function.

 ["Color Management" on page 30](#)

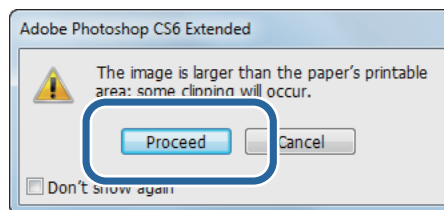
**8**

Click **Print**.

**Note:**

If the image size is larger than the print size, the following screen is displayed.

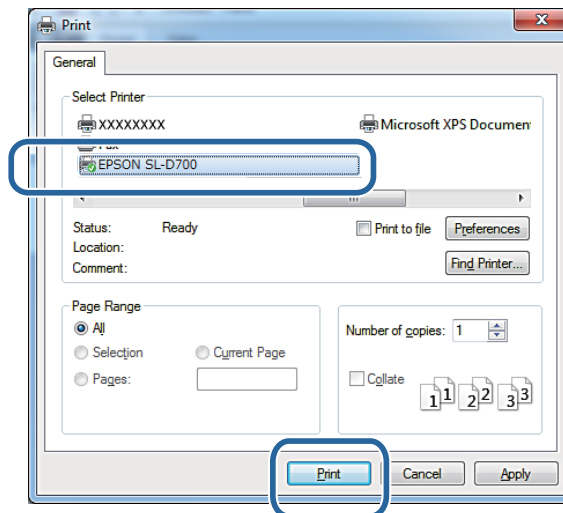
Click **Proceed**. If you click **Cancel**, printing is canceled and you are returned to the application's screen.



**9**

Select this printer, and then click **Print**.

Print data is sent to the printer.



**Note:**

This screen may not be displayed depending on the application. After performing step 8, print data is sent to the printer.

This completes this section.

## Basic Printing Methods (Windows)

# Canceling Printing

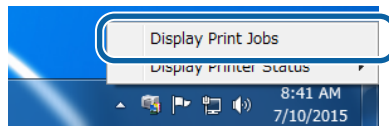
This section explains how to cancel printing.

You can cancel printing from the computer while data is being sent.

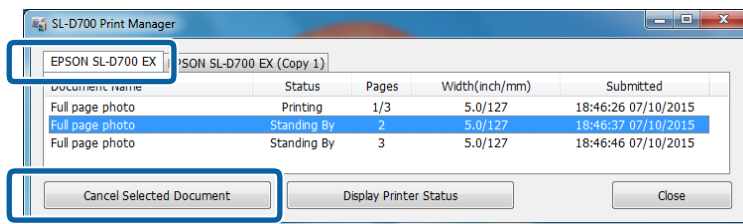
- 1 Right-click **SL-D700 Print Manager** on the Taskbar.



- 2 Click **Display Print Jobs**.



- 3 Select the printer you are using, select the print data you want to cancel, and then click **Cancel Selected Document**.



**Note:**

*You cannot delete print data that has already been sent to the printer.*

This completes this section.



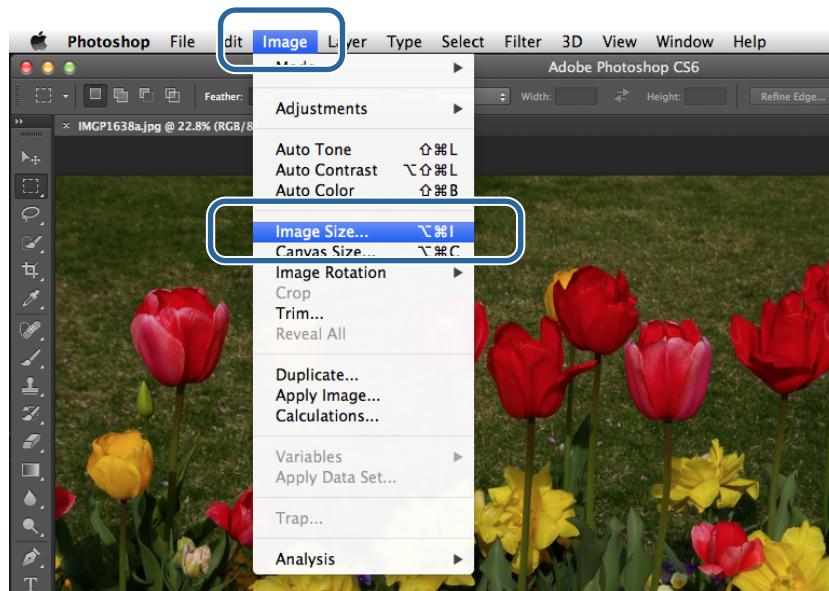
# Basic Printing Methods (Mac OS X)

## Printing from PhotoShop

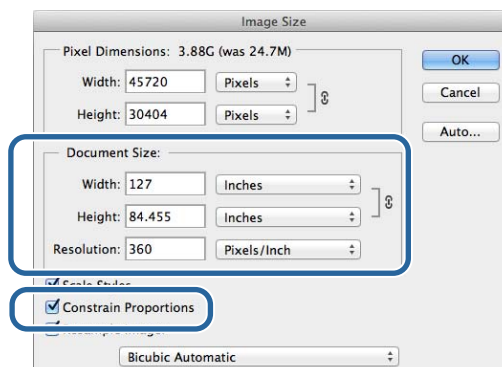
This section uses Adobe Photoshop CS6 as an example of printing image data on your computer.

Operations may differ depending on the application software being used. See the manual supplied with the application software for more details.

- 1 Start Adobe Photoshop CS6, and open an image.
- 2 Click **Image Size** from the **Image** menu to display the **Image Size** screen.



- 3 Set the image size and resolution.
  - Select **Constrain Proportions**, and match the **Width** and **Height** settings to the actual paper size.
  - Set the **Resolution**. In this example, we set 360 pixel/inch.
  - When you have finished making settings, click **OK**.



## Basic Printing Methods (Mac OS X)

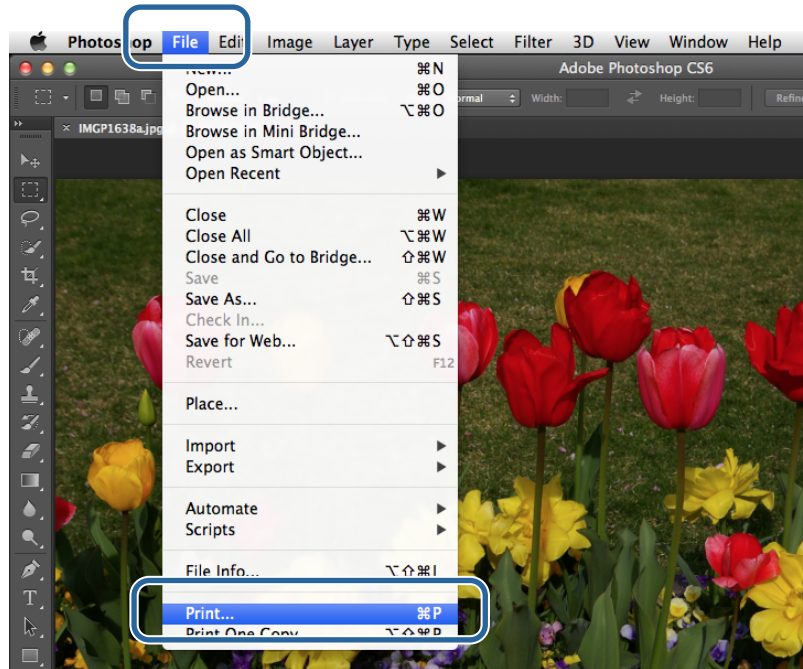
### Note:

You can create clear print outs by setting the **Resolution** to a multiple of the printer's **Image Quality** resolution.

We recommend setting multiples of 180 pixel/inch because the settings for **Image Quality** are either **High Speed** (360 dpi), **Standard** (720 dpi), or **High Image Quality** (1440 dpi).

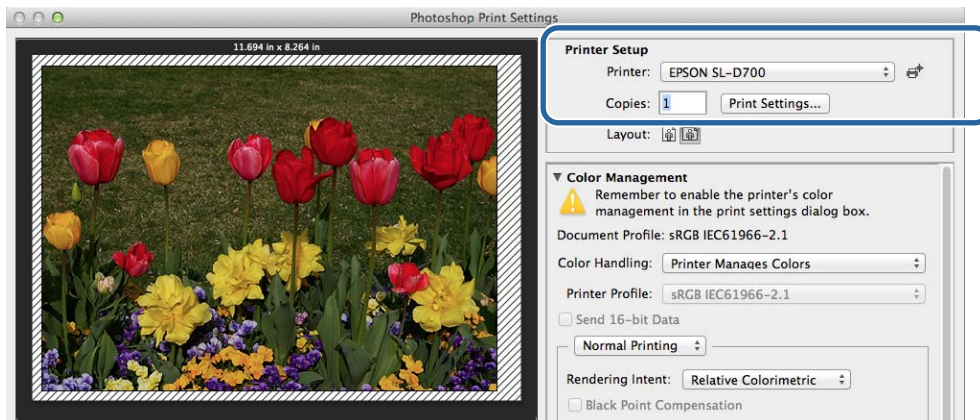
4

Click **Print** from the **File** menu to display the **Print Settings** screen.



5

Select this printer from **Printer** on the **Printer Settings** screen, and then click **Print Settings**.



6

Make the necessary settings.

**Paper Size:** Set the size of the paper used for printing. Make sure this is the same as the image size you set in step 3.

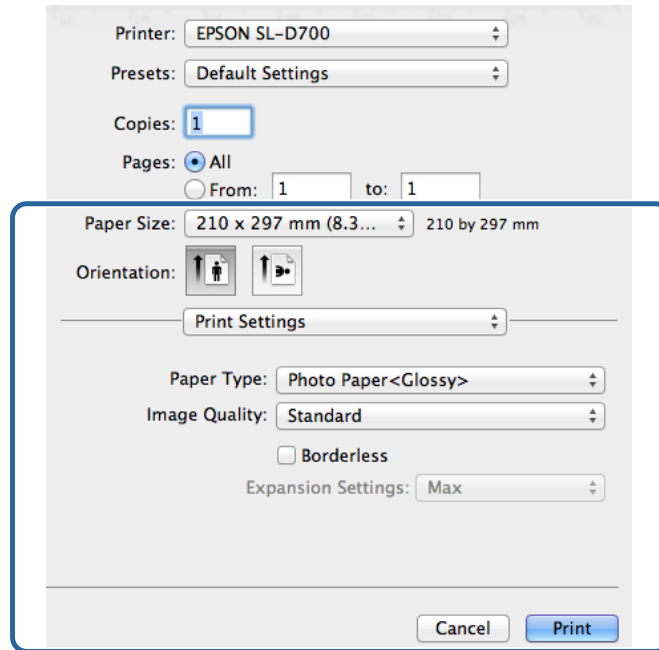
**Paper Type:** Set the paper being used.

**Image Quality:** Normally set **Standard**. If you want to print using high image quality, set **High Image Quality**. If you want to print quickly, set **High Speed**.

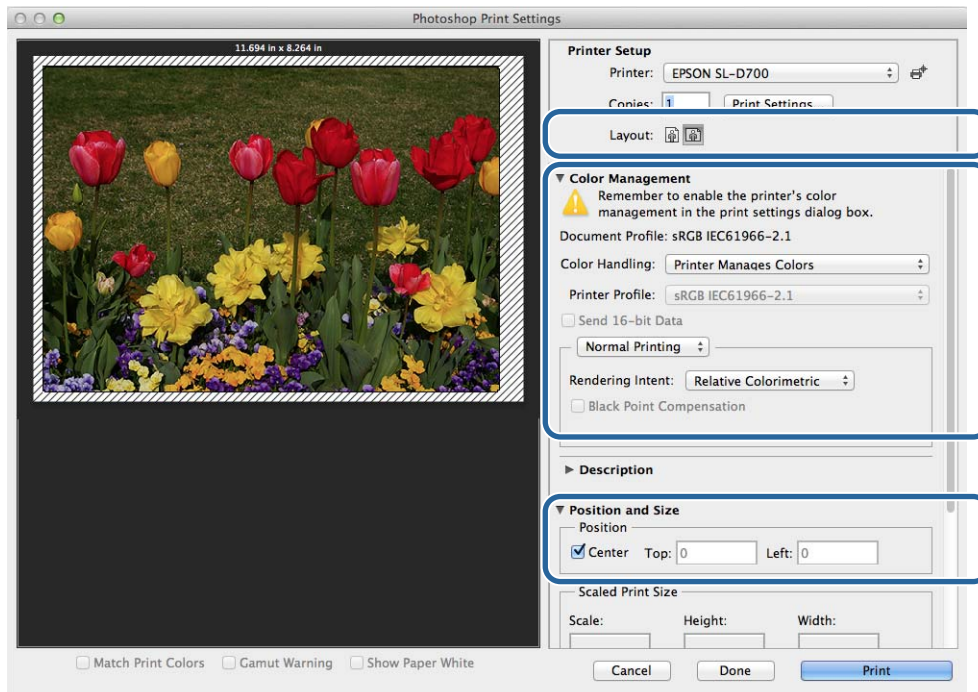
## Basic Printing Methods (Mac OS X)

 [“Settings Screen \(Mac OS X\)” on page 17](#)

When you have finished making settings, click **Print**.



- 7** Set each item, such as print direction or position and color management, while checking the image displayed on the **Print Settings** screen.



**Note:**

When performing detailed color management using the PhotoShop functions, set the **Color Management** to match these settings. See the manual supplied with PhotoShop for more details on each function.

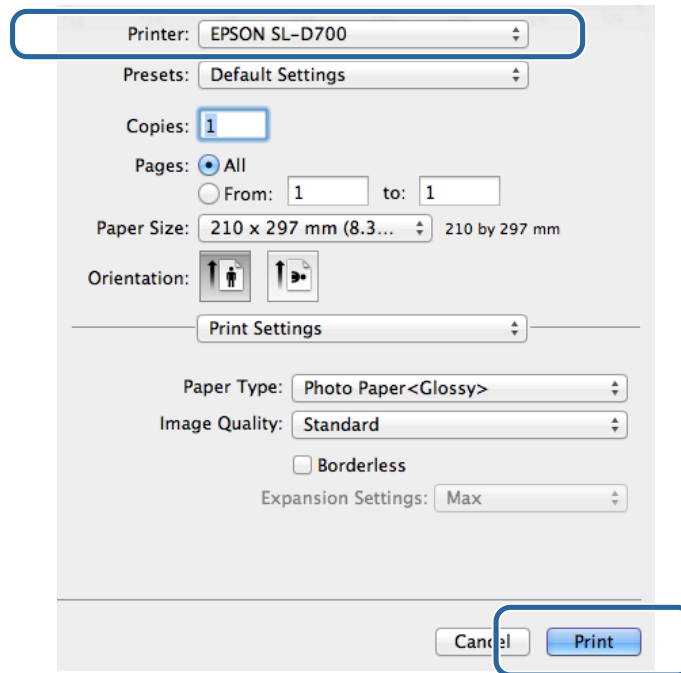
 [“Color Management” on page 30](#)

**Basic Printing Methods (Mac OS X)**

**8** Click **Print**.

**9** Select this printer, and then click **Print**.

Print data is sent to the printer.

**Note:**

*This screen may not be displayed depending on the application. After performing step 8, print data is sent to the printer.*

This completes this section.

## Basic Printing Methods (Mac OS X)

# Canceling Printing

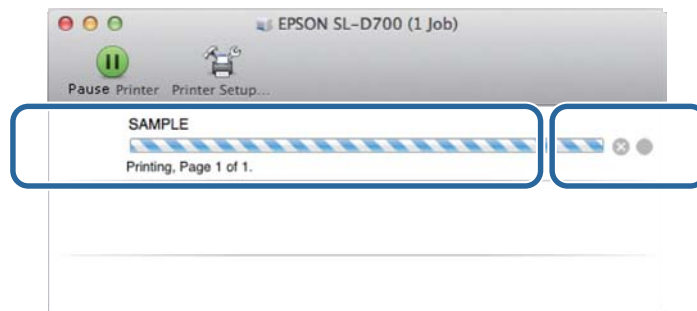
This section explains how to cancel printing.

You can cancel printing from the computer while data is being sent.

- 1 Click the printer icon in the Dock.



- 2 Select the job you want to cancel, and then click X (or **Delete**).

**Note:**

*You cannot delete print data that has already been sent to the printer.*

This completes this section.

---

# Various Print Functions

---

## Color Management

---

### Color Management Settings

You can perform color management using the printer driver in the following three ways.

Choose the best method according to the application you are using, the operating system environment, the aim of the print out and so on.

#### Setting colors manually (Windows only)

Manually adjust the color space and color tone settings used for printing. This is useful if the application does not have its own color management function.

 [“Setting colors manually \(Windows only\)” on page 31](#)

#### Color management from the application (no color management)

This method is for printing from applications that support color management. All color management processes are carried out by the application's color management system. This method is useful when you want to obtain the same color management results using a common application among different operating system environments.

 [“Color management from the application \(no color management\)” on page 34](#)

#### Color management from the printer driver

Performs color management using the operating system's color management system. Windows uses ICM and Mac OS X uses ColorSync. This is effective in producing similar print results from different applications under the same operating systems. However, you also need an application that supports color management.

 [“Color management from the printer driver \(ICM\) \(Windows\)” on page 36](#)

 [“Color management by printer driver \(ColorSync\) \(Mac OS X\)” on page 38](#)

## Various Print Functions

### Setting colors manually (Windows only)

You can select the color space used for color management from sRGB or Adobe RGB. You can also adjust the color tone manually while viewing a preview image.

- sRGB: Normally, select sRGB.
- Adobe RGB: Select when printing data based on the Adobe RGB color space.

When Color Controls is selected, you can fine tune the brightness, contrast, saturation, color balance, and so on.

**1** When using applications featuring a color management function, specify how to adjust colors from these applications.

When using applications without a color management function, start from step 2.

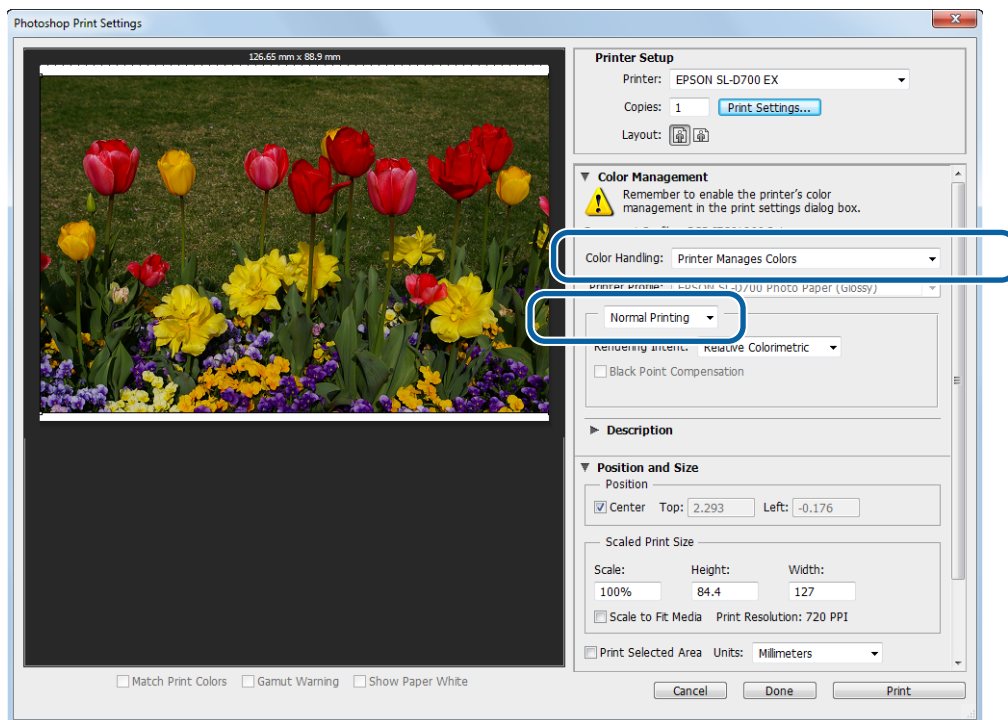
Depending on the type of the application, make the settings following the table below.

Application software	Color Management Settings
Adobe Photoshop CS5/CS6	Printer Manages Colors
Adobe Photoshop Lightroom 3/4	
Other applications	No Color Adjustment

#### Example of Adobe Photoshop CS6

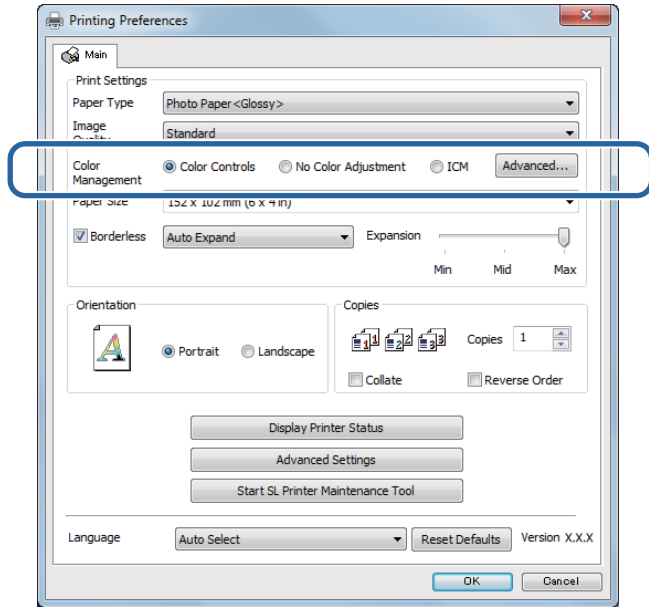
Open the **Print Settings** screen.

Select **Normal Printing** from **Color Management**. Select **Printer Manages Colors** in **Color Handling**.



### Various Print Functions

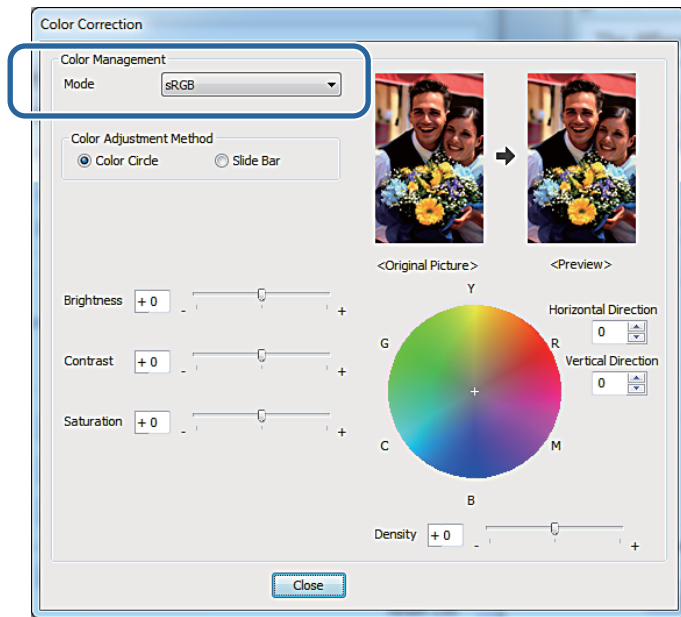
- 2 Click **Print Settings** to display the printer driver's Settings screen.
- 3 On the **Main** screen, select **Color Controls** in **Color Management**, and then click **Advanced**.



- 4 Select **Mode**.

**sRGB:** Manages colors using sRGB. Prints at the optimum color tones. This should normally be selected.

**Adobe RGB:** Manages colors based on the larger Adobe RGB color space. Select when printing image data using the Adobe RGB color space information.





## Various Print Functions

5

Make the necessary settings.

**Color Adjustment Method:** Select the color adjustment method.

**Brightness:** Adjusts the brightness of the image.

**Contrast:** Adjusts the contrast (difference between light and dark) of the image.

When the contrast is raised, bright sections become brighter, and dark sections become darker. When the contrast is lowered, the difference between light and dark sections decreases.

**Saturation:** Adjusts the saturation (color clarity) of the image. When the saturation is raised, colors become vivid. When the saturation is lowered, the colors become dull until they are close to gray.

**Color Circle:** When the color circle is selected as the **Color Adjustment Method**, you can click on the color circle to adjust the density bar.

You can also adjust the tone by entering horizontal and vertical coordinates.

**Slide Bar:** When the slide bar is selected as the **Color Adjustment Method**, you can adjust the colors with the slide bar.

**Note:**

*You can adjust the correction value while checking the sample image at the top of the screen.*

6

Set other items if necessary, and then print.

This completes this section.

## Various Print Functions

### Color management from the application (no color management)

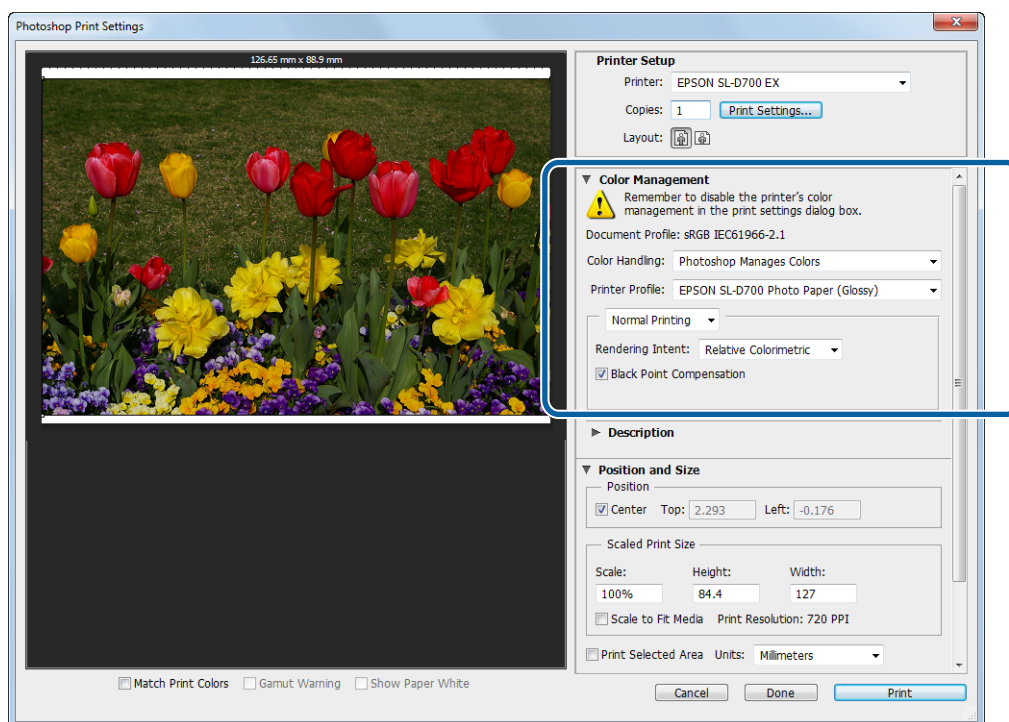
Print using applications with a color management function. Enable the color management settings in the application and disable the printer driver's color adjustment function.

- 1 Make the settings for color adjustment using the application.

#### Example of Adobe Photoshop CS6

Open the **Print Settings** screen.

Select **Normal Printing** from **Color Management**. Select **Photoshop Manages Colors** as the **Color Handling** setting, and then select the **Printer Profile** and the **Rendering Intent**.



**Note:**

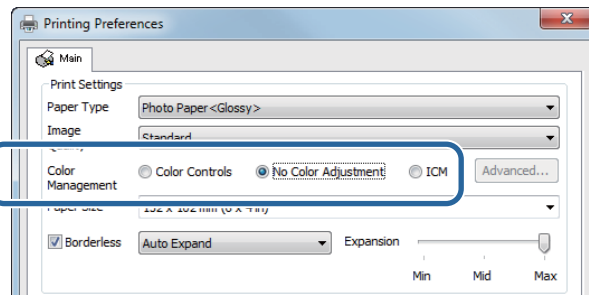
If you are not using an original printer profile, select a profile for each paper type from the **Printer Profile** drop-down menu.

- 2 Click **Print Settings** to display the printer driver's Settings screen.

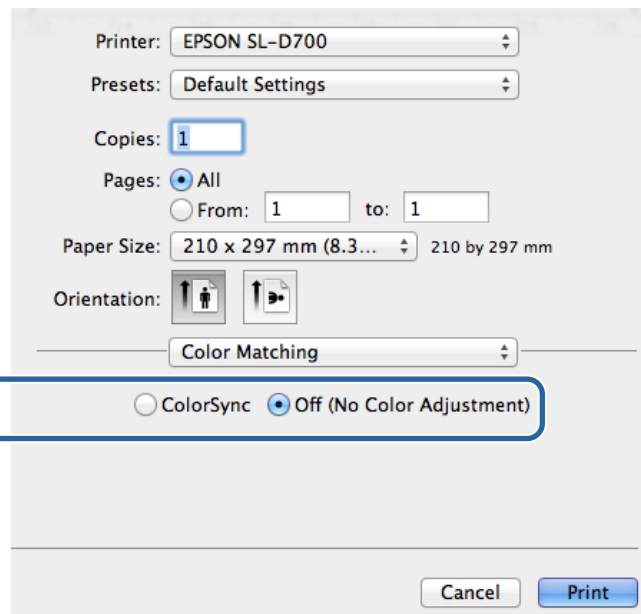
## Various Print Functions

**3** Turn off color management.

Windows: On the **Main** screen, select **No Color Adjustment** from **Color Management**.



Mac OS X: Select **Color Matching** from the list, and then click **Off (No Color Adjustment)**.



**4** Set other items if necessary, and then print.

This completes this section.

## Various Print Functions

### Color management from the printer driver (ICM) (Windows)

Performs color management from the printer driver. If the application does not support color management, select Driver ICM (Basic) or Driver ICM (Advanced). If the application does support color management, select Host ICM. When performing color management using Host ICM, use image data that contains an embedded input profile.

- 1 Make the settings for color adjustment using the application.

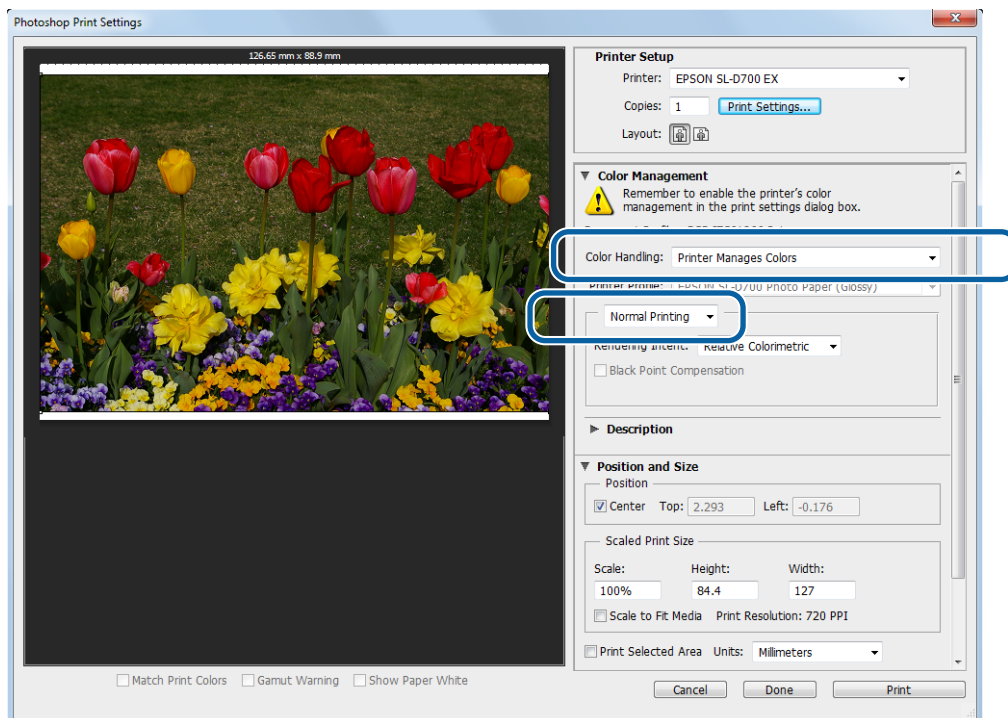
Depending on the type of the application, make the settings following the table below.

Application software	Color Management Settings
Adobe Photoshop CS5/CS6	Printer Manages Colors
Adobe Photoshop Lightroom 3/4	
Other applications	No Color Adjustment

#### Example of Adobe Photoshop CS6

Open the **Print Settings** screen.

Select **Normal Printing** from **Color Management**. Select **Printer Manages Colors** in **Color Handling**.

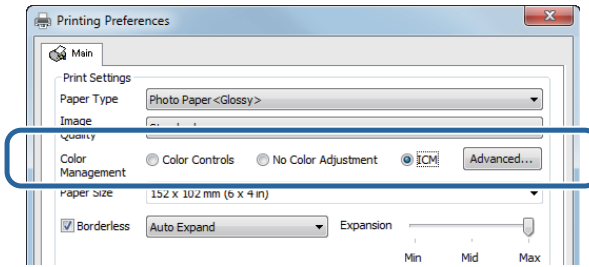


When using applications without a color management function, start from step 2.

- 2 Click **Print Settings** to display the printer driver's Settings screen.

### Various Print Functions

**3** On the **Main** screen, select **ICM** in **Color Management**, and then click **Advanced**.

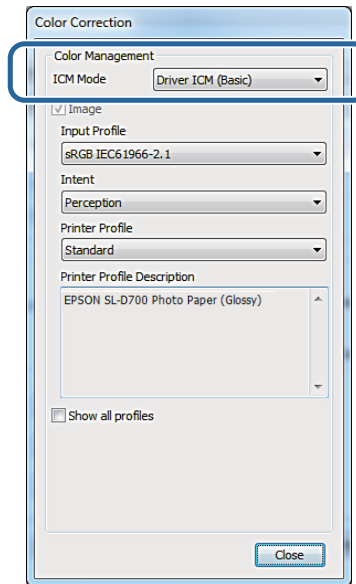


**4** Select **ICM Mode**.

**Driver ICM (Basic):** Specify the input profile used to process the entire image data.

**Driver ICM (Advanced):** Specify the input profile for each image such as photos, graphics, and text data.

**Host ICM:** Specify when printing from applications that support color management.



**5** Make the necessary settings.

When **Driver ICM (Basic)** or **Driver ICM (Advanced)** is selected, specify an input profile.

When **Show all profiles.** is selected, specify the **Intent** and **Printer Profile**.

Intent	Explanation
Saturation	Performs conversion, without changing the current saturation.
Perceptual	Performs conversion so that a more visually natural image is produced. This feature is used when a wider gamut of color is used for image data.
Relative Colorimetric	Performs conversion so that a set of color gamut coordinates and white point (color temperature) coordinates in original data match their corresponding print coordinates. This feature is used for many types of color matching.

### Various Print Functions

Intent	Explanation
Absolute Colorimetric	Performs conversion so that absolute color gamut coordinates are assigned to both the original and print data. Therefore, color tone adjustment is not performed on any white point (or color temperature) for the original or print data. This feature is used for special purposes such as logo color printing.

- 6 Set other items if necessary, and then print.

This completes this section.

## Color management by printer driver (ColorSync) (Mac OS X)

Performs color management from the printer driver. The application needs to support ColorSync. When performing color management using ColorSync, use image data in which an input profile is embedded.

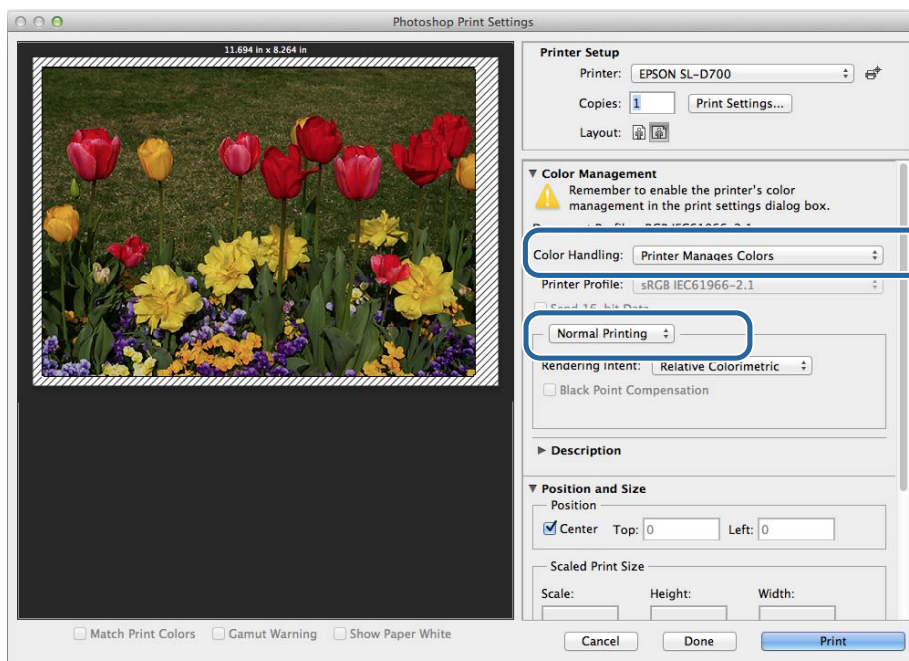
- 1 Make the settings for color adjustment using the application.

Depending on the type of the application, make the settings following the table below.

Application software	Color Management Settings
Adobe Photoshop CS5/CS6	Printer Manages Colors
Adobe Photoshop Lightroom 3/4	
Other applications	No Color Adjustment

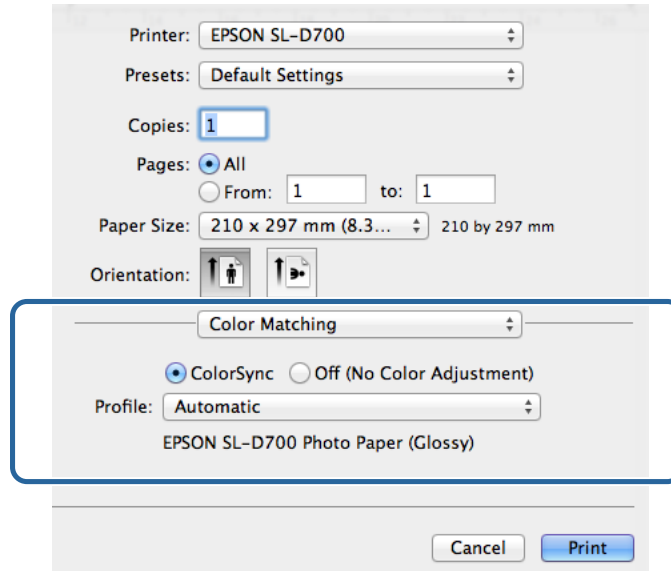
**Example of Adobe Photoshop CS6**  
Open the **Print Settings** screen.

Select **Normal Printing** from **Color Management**. Select **Printer Manages Colors** in **Color Handling**.



## Various Print Functions

- 2 Click **Print Settings** to display the printer driver's Settings screen.
- 3 Select **Color Matching** from the list, and then click **ColorSync**. And then select **Profile**.



- 4 Set other items if necessary, and then print.

This completes this section.

## Various Print Functions

# Borderless Printing

You can print your data without borders (margins).

The printer driver enlarges the print data to a size slightly larger than the paper size and prints the enlarged image. The sections which are beyond the paper edges are not printed; therefore, resulting in borderless printing. You can set the amount that extends beyond the edges of the paper in the printer driver.

### Types of Borderless Printing Methods

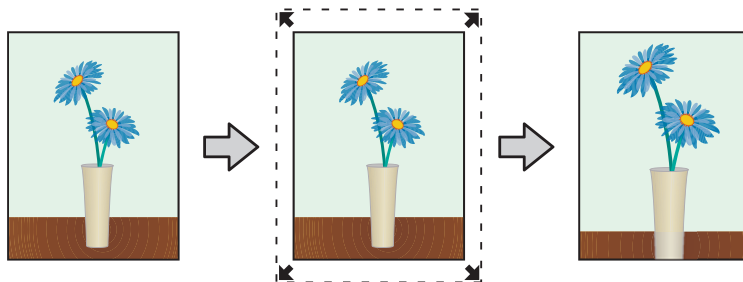
You can perform borderless printing using the following two methods: Auto Expand or Retain Size.

#### Auto Expand

The printer driver enlarges the print data to a size slightly larger than the paper size and prints the enlarged image. The sections which are beyond the paper edges are not printed; therefore, resulting in borderless printing.

Use settings such as Page Layout in the applications to set the size of the image data as follows.

- Match the paper size and page setting for the print data.
- If the application has margin settings, set the margins to 0 mm.
- Make the image data as large as the paper size.



#### Retain Size

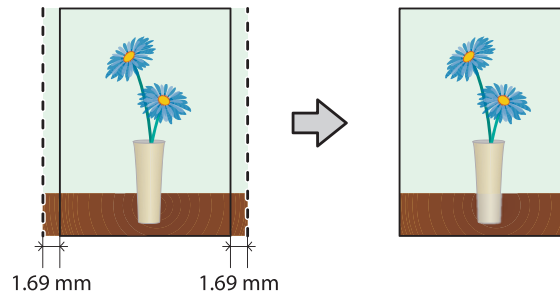
Create the print data larger than the actual paper size in the applications to produce borderless output. The printer driver does not enlarge the image data. Use settings such as Page Layout in the applications to set the size of the image data as follows.

- Make image size setting so that the print data is 1.69 mm larger to the left and right than the actual paper size.
- If the application has margin settings, set the margins to 0 mm.
- Make the image data as large as the paper size.



## Various Print Functions

Select this setting if you want to avoid image enlargement by the printer driver.



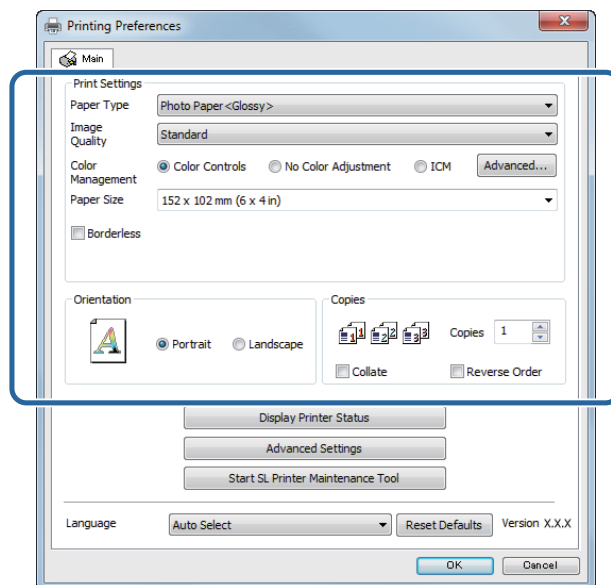
## Setting Procedure

### Windows

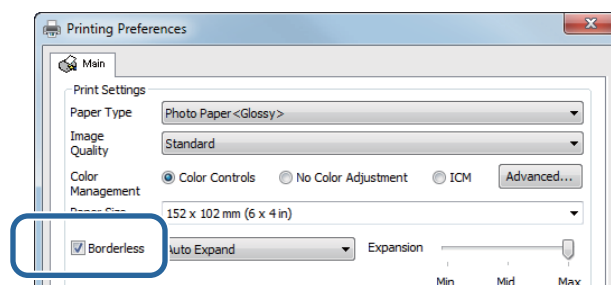
- 1 Display the printer driver's **Main** screen.

[“Settings Screen \(Windows\)” on page 13](#)

- 2 On the **Main** screen, set items necessary for printing such as the **Paper Type** and the **Paper Size**.



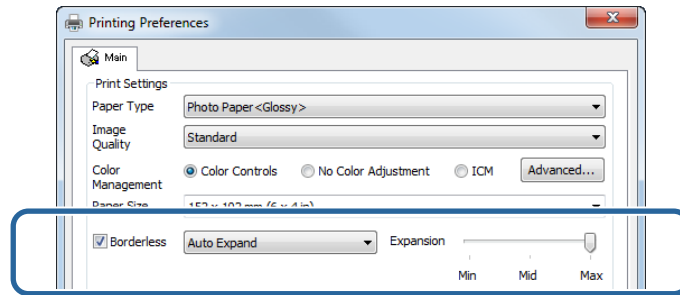
- 3 Select **Borderless**.



## Various Print Functions

- 4 Select **Auto Expand** or **Retain Size** as the borderless method.

When **Auto Expand** is selected, set the slider to set the amount of enlargement.



**Note:**

Moving the slider towards **Mid** or **Min** decreases the image enlargement ratio. Therefore, some margins may appear at the edges of the paper depending on the paper and printing environment.

- 5 Set other items if necessary, and then print.

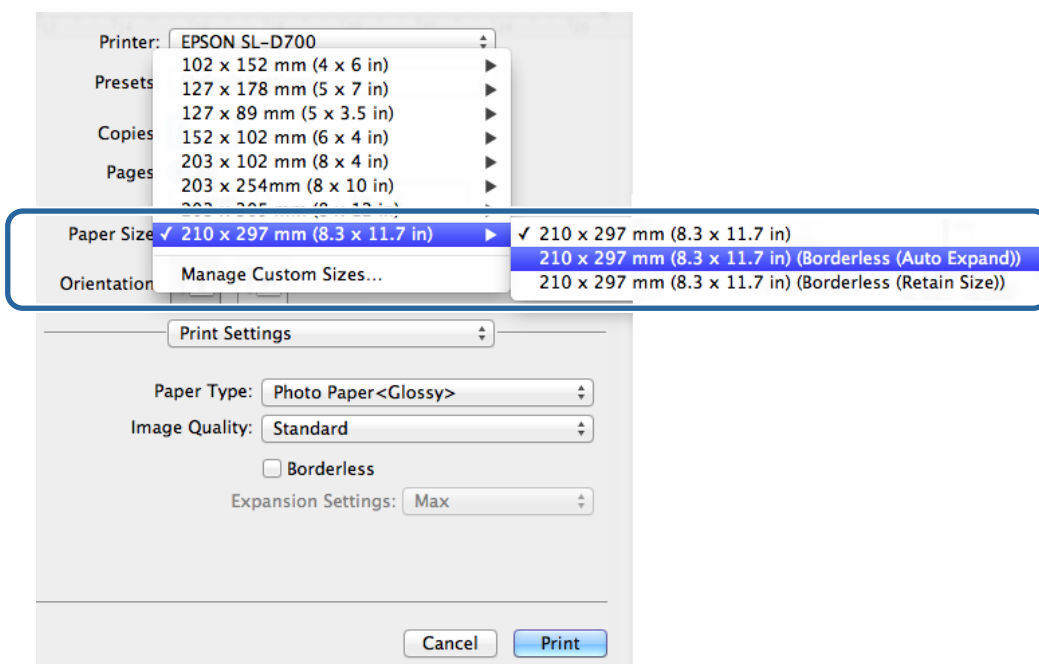
This completes this section.

## Mac OS X

- 1 Display the printer driver's **Printer Settings** screen.

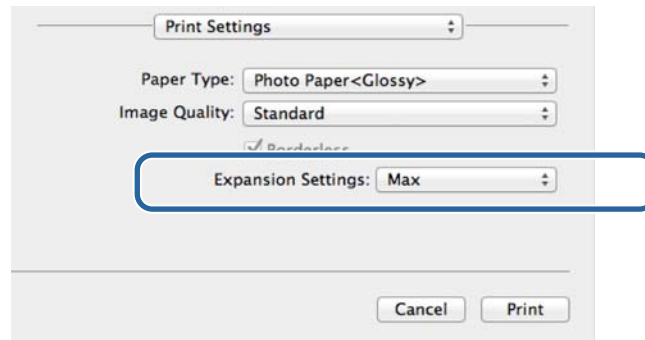
[☞ “Settings Screen \(Mac OS X\)” on page 17](#)

- 2 Select the print size and borderless printing method in Paper Size.



## Various Print Functions

- 3** When **Auto Expand** is selected in Paper Size, select the amount of enlargement.



**Note:**

Selecting **Mid** or **Min** decreases the image enlargement ratio. Therefore, some margins may appear at the edges of the paper depending on the paper and printing environment.

- 4** Set other items if necessary, and then print.

This completes this section.

## Various Print Functions

# Printing on Non-regular Paper Sizes

You can print on paper sizes not included in the printer driver. The printer can be used with paper of the following sizes.

Width *	102, 127, 152, 203, 210 mm
Length	89 to 1,000 mm

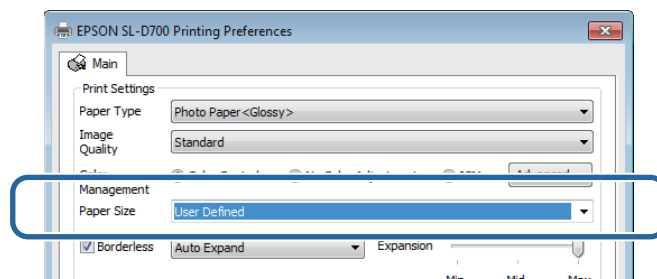
\* Although you can set 102 to 210 mm in Mac OS X, paper sizes that are not supported by this printer cannot be printed correctly.

**!** **Important:**  
Depending on the application, output sizes may be restricted.

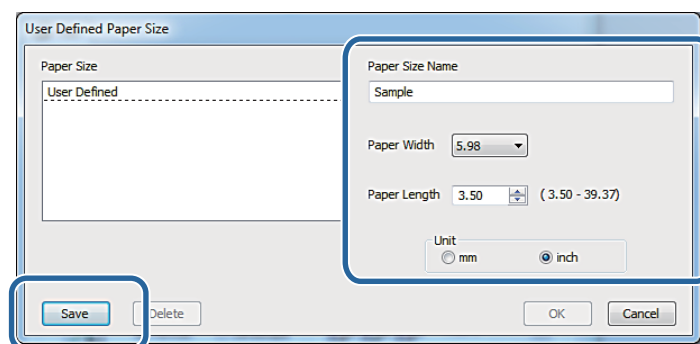
## Setting Procedure

### Windows

- 1 Display the printer driver's **Main** screen.  
[☞ “Basic Printing Methods \(Windows\)” on page 20](#)
- 2 On the **Main** screen, select **User Defined** from **Paper Size**.



- 3 On the **User Defined Paper Size** screen enter a **Paper Size Name**, set the paper size, and then click **Save**.



## Various Print Functions

**Note:**

- To change the registered paper size, select the paper size name from the list on the left.
- To delete a registered paper size, select the paper size name from the list on the left, and then click **Delete**.
- You can register up to 30 paper sizes.

**4** Click **OK**.

The size entered in the paper size list box is registered.

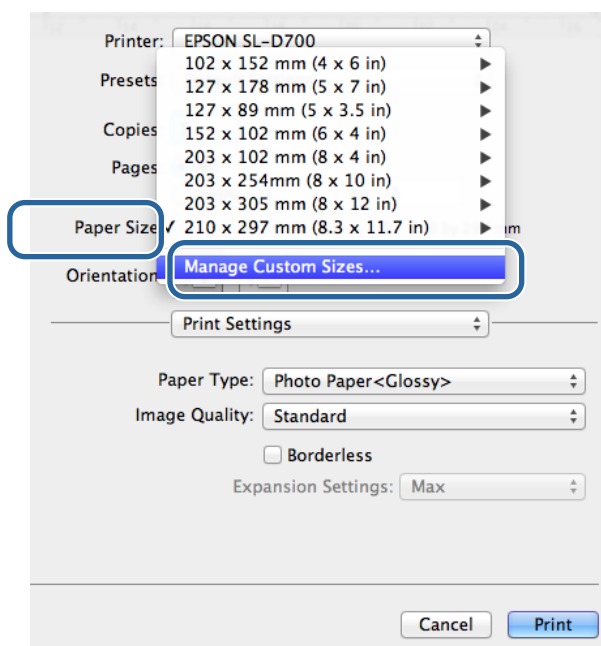
You can then print as normal.

## Mac OS X

**1** Display the printer driver's **Page Setup** screen.

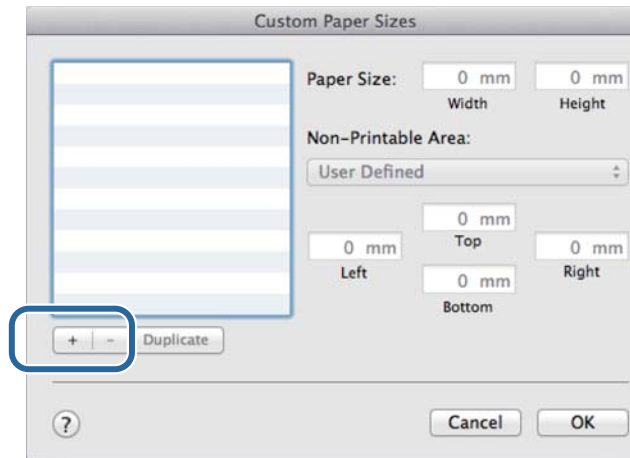
 [“Settings Screen \(Mac OS X\)” on page 17](#)

**2** Select **Manage Custom Sizes** from **Paper Size**.



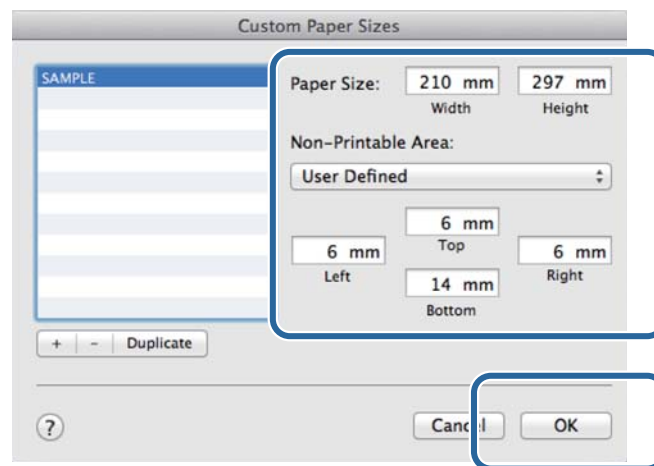
## Various Print Functions

- 3 Click +, and then enter the paper size name.



- 4 Enter the **Width** and **Height** for the **Paper Size** as well as the margins, and then click **OK**.

Set the page size range and the printer margins according to the printing method.



**Note:**

- To edit a saved custom size, choose its name from the list on the left of the **Custom Paper Sizes** screen.
- To copy a saved custom size, select the size in the list on the left and click **Duplicate**.
- To delete a saved custom size, select it in the list on the left and click -.
- The custom paper size setting differs depending on the operating system version. See your operating system's documentation for details.

- 5 Click **OK**.

You can select the paper size you saved from the Paper Size pop-up menu.

You can then print as usual.

# Troubleshooting

**Note:**

For problems not related to the printer driver, see the "Operation Guide".

☞ "Operation Guide" - "Troubleshooting"

## When an Error Message Is Displayed

When an error message is displayed, check the solution on the screen and take the required measures.

### You cannot print (because the printer does not work)

Cause	What to do
The printer driver is not installed correctly.	<p><b>Is the icon for this printer displayed in the Devices and Printers, Printers and Faxes folder?</b></p> <p><input type="checkbox"/> Yes</p> <p>The printer driver is installed. See the following item, "The printer is not connected correctly to the computer".</p> <p><input type="checkbox"/> No (An icon is displayed under "Unspecified")</p> <p>Do the following:</p> <ol style="list-style-type: none"> <li>1. Click <b>Start - Control Panel - Hardware and Sound - Device Manager - Other devices.</b></li> <li>2. Right-click <b>EPSON SL-D700</b>, and then click <b>Update Driver Software.</b></li> <li>3. Click <b>Search automatically for updated driver software.</b></li> <li>4. After the driver software is updated, click <b>Close.</b></li> <li>5. See "Maintenance Tool Operation Guide" and register the printer.</li> </ol> <p>If the printer driver is still not installed even after the procedure above, install the printer driver again.</p> <hr/> <p><b>Does the printer port setting match the printer connection port?</b></p> <p>Check the printer port.</p> <p>Click the <b>Port</b> tab on the printer's Properties screen, and check if the printer name's port is set.</p> <p>If it is not indicated, the printer driver is not installed correctly.</p> <p>Delete and reinstall the printer driver.</p>
The printer is not communicating with the computer.	<p><b>Is the cable plugged in correctly?</b></p> <p>Confirm that the interface cable is securely connected to both the printer connector and the computer. Also, make sure the cable is not broken nor bent. If you have a spare cable, try connecting with the spare cable.</p>
An error has occurred on the printer.	<p><b>Check the lights on the printer and the message on the screen.</b></p> <p>See the "Operation Guide" for the solution.</p>

## Troubleshooting

Cause	What to do
The printer stops printing.	<p><b>Is the status of the print queue Pause?</b></p> <p>If you stop printing or the printer stops printing because of an error, the print queue enters a <b>Pause</b> status. You cannot print in this status.</p> <p>Double-click the printer icon in the <b>Devices and Printers</b> or <b>Printers and Faxes</b> folder; if printing is paused, open the <b>Printer</b> menu and clear the <b>Pause</b> check box.</p>

## The printer sounds like it is printing, but nothing prints


Cause	What to do
The print head moves, but nothing prints.	<p><b>Confirm the printer operation.</b></p> <p>See the "Maintenance Tool Operation Guide" to print a nozzle check pattern, and then check the printer's operations and status.</p>
The nozzle check pattern is not printed correctly.	<p><b>Perform head cleaning.</b></p> <p>The nozzles may be clogged. See the "Maintenance Tool Operation Guide" to perform head cleaning, and then try printing the nozzle check pattern again.</p>

## The prints are not what you expected

Cause	What to do
Print quality is poor, uneven, too light, or too dark.	<p><b>Are the print head nozzles clogged?</b></p> <p>If the nozzles are clogged, specific nozzles do not fire ink and the print quality declines. See the "Maintenance Tool Operation Guide" to perform a nozzle check.</p>
	<p><b>Are the Paper Type settings correct?</b></p> <p>Make sure the <b>Paper Type</b> settings on the printer driver's <b>Printer Settings</b> screen match the paper to be printed on.</p>
	<p><b>Have you compared the printing result with the image on the display monitor?</b></p> <p>Since monitors and printers produce colors differently, printed colors will not always match on-screen colors perfectly.</p>
The color is not exactly the same as another printer.	<p><b>Colors vary depending on the printer type due to each printer's characteristics.</b></p> <p>Because inks, printer drivers, and printer profiles are developed for each printer model, the colors printed by different printer models are not exactly the same.</p>



## Troubleshooting

Cause	What to do
The print is not positioned properly on the paper.	<p><b>Have you specified the print area?</b></p> <p>Check the print area in the settings of the application and the printer.</p>
	<p><b>Are the paper size settings correct?</b></p> <p>If the option selected for <b>Paper Size</b> in the printer driver does not match the paper size (width) loaded in the printer, the print may not be in the correct position or some of the data may be printed over the edges of the paper.</p> <p>Check the <b>Paper Size</b> setting on the printer driver's <b>Printer Settings</b> screen.</p>
Margins appear in borderless printing.	<p><b>Are the settings for the print data in the application correct?</b></p> <p>Make sure that the paper settings in the application are correct as well as in the printer driver.</p> <p> <a href="#">"Borderless Printing" on page 40</a></p>

## Updating Printer Driver (Windows)

# Updating Printer Driver (Windows)

Follow the procedure below to update the printer driver.

**!** **Important:**

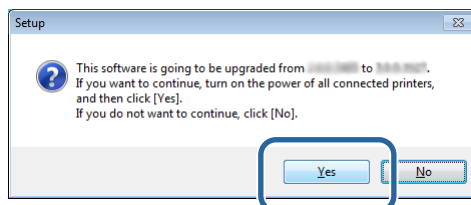
- Connect all printers and turn on the power.
- You must log on as a user with administrative privileges.
- If an Administrator password or confirmation is requested, enter the password and then continue with the operation.

- 1** Turn off the printer and then connect the printer to a computer with a USB cable.



- 2** Insert the software disc, and then double-click Setup.exe in the **SystemApplication - Windows** folder.

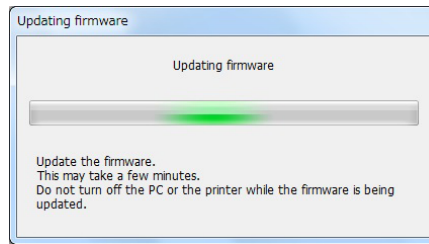
- 3** When the following screen is displayed, click **Yes**.



## Updating Printer Driver (Windows)

- 4** Follow the on-screen instructions to complete installation.

The following screen is displayed when you need to update the firmware.



**!** **Important:**  
*Do not turn off the printer while updating the firmware.*

- 5** When the printer driver installation is complete, update the paper information (register information for a paper type file to the printer).

Perform steps 4 to 10 in "Installing the Printer Driver (Windows)".

[🔗 "Installing the Printer Driver \(Windows\)" on page 6](#)

## Updating Printer Driver (Mac OS X)

---

# Updating Printer Driver (Mac OS X)

---

Follow the same procedure as installing the printer driver.

 [“Installing the Printer Driver \(Mac OS X\)” on page 10](#)

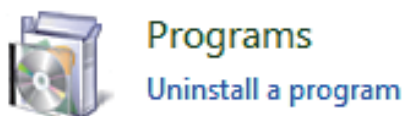
## Uninstalling the Printer Driver (Windows)

# Uninstalling the Printer Driver (Windows)

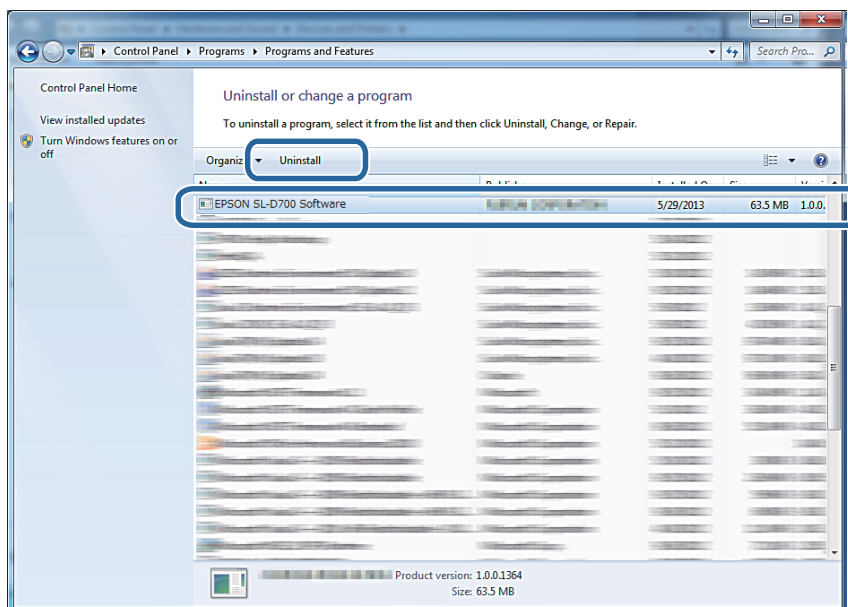
**Note:**

- ❑ You must log on as a user with administrative privileges.
- ❑ In Windows 7/Windows 8, if an Administrator password or confirmation is requested, enter the password and then continue with the operation.

1 From the **Control Panel** click **Uninstall program** (or **Add or remove programs**).



2 Select "EPSON SL-D700 Software", and then click **Uninstall** (or **Del**).



3 Follow the on-screen instructions to continue.

When the delete confirmation message appears, click **Yes**.

The Maintenance Tool and the printer driver are removed at the same time.

Restart the computer if you are reinstalling the printer driver.

## Uninstalling the Printer Driver (Mac OS X)

---

# Uninstalling the Printer Driver (Mac OS X)

---

Use the "Uninstaller" to uninstall the printer driver.

### **Downloading the Uninstaller**

Download the Uninstaller from the Epson website.

<http://www.epson.com/>

### **Using the Uninstaller**

Follow the instructions on the Epson website.