

SureLab Layout and ID Operation Guide

Copyrights and Trademarks

Meaning of Symbols

Important: Important must be followed to avoid damage to this product.

Note: Notes contain useful or additional information on the operation of this product.

Operating System Versions

In this manual, the following abbreviations are used. **Windows** refers to **Windows 8, 7**.

- Windows 8 refers to Windows 8 Pro.
- Windows 7 refers to Windows 7 Professional.

Copyrights and Trademarks

No part of this publication may be reproduced, stored in a retrieval system, or transmitted in any form or by any means, electronic, mechanical, photocopying, recording, or otherwise, without the prior written permission of Seiko Epson Corporation. The information contained herein is designed only for use with this Epson printer. Epson is not responsible for any use of this information as applied to other printers.

Neither Seiko Epson Corporation nor its affiliates shall be liable to the purchaser of this product or third parties for damages, losses, costs, or expenses incurred by the purchaser or third parties as a result of accident, misuse, or abuse of this product or unauthorized modifications, repairs, or alterations to this product, or (excluding the U.S.) failure to strictly comply with Seiko Epson Corporation's operating and maintenance instructions.

Seiko Epson Corporation shall not be liable for any damages or problems arising from the use of any options or any consumable products other than those designated as Original Epson Products or Epson Approved Products by Seiko Epson Corporation.

Seiko Epson Corporation shall not be held liable for any damage resulting from electromagnetic interference that occurs from the use of any interface cables other than those designated as Epson Approved Products by Seiko Epson Corporation.

EPSON® is registered trademark, and EPSON EXCEED YOUR VISION or EXCEED YOUR VISION is a trademark of Seiko Epson Corporation.

Microsoft®, Windows® and Windows Vista® are registered trademarks of Microsoft Corporation.

Adobe®, Photoshop®, Elements®, Lightroom®, and Adobe® RGB are registered trademarks of Adobe Systems Incorporated.

BEMCOT is a trademark of Asahi Kasei Fibers Corporation.

General Notice: Other product names used herein are for identification purposes only and may be trademarks of their respective owners. Epson disclaims any and all rights in those marks.

© 2015 Seiko Epson Corporation. All rights reserved.

Contents

Copyrights and Trademarks

Meaning of Symbols.	2
Operating System Versions.	2
Copyrights and Trademarks.	2

Installing the Software

System Configurations.	4
System Requirements.	4
Installing the software.	4

Starting and Closing

Starting.	6
Standalone startup.	6
Starting from SureLab OrderController.	6
Closing.	9

Before Starting Operations

Preparing in Advance.	10
Adding and setting frames.	10
Adding and setting a layout.	14
Adding and setting memory devices.	16
Setting the output destination.	18
Preset settings.	19
Basic Operation Workflow.	23

Operating Each Service

Common Operations.	25
Detail.	33
Enter Text.	37

Setup Explanations

Frame Settings screen.	39
Layout Settings Screen.	41
Media Screen.	42
System Screen.	43

Appendix

Removing the Software.	44
SEIKO EPSON CORPORATION SOFTWARE LICENSE AGREEMENT.	45

Installing the Software

System Configurations

This software comes with a photo processing function and a layout function.

You can place received photos in various layouts.

You can register orders by linking with SureLab OrderController.

System Requirements

The following hardware and system requirements are necessary for the computer on which the software is being installed.

Operating System	Windows 7 Professional (32bit/64bit) Windows 8 Pro (32bit/64bit)
CPU	Intel Core2Duo 2 GHz or faster (Intel Core i5 2.5 GHz or faster recommended)
Main Memory	2 GB or more (4 GB or more recommended)
Free Hard Disk Space	250 GB or more during installation (500 GB or more recommended)
Display	1280 x 1024, 24 bit color or higher
Supported Image Formats	JPEG, TIFF, BMP at 10,000 x 10,000 pixels or less 3000 items or less
Necessary software	SureLab OrderController Ver. 3.0 or later

Installing the software



Important:

- Do not turn off the computer during installation.
- Log on to the computer as a user with administrator authority. If a password entry screen or confirmation message is displayed, enter the password to continue.
- Install applications necessary to perform print operations, such as SureLab OrderController, on the computer in advance.

1

Close all running applications on the computer.

2

Insert the software disc for SureLab OrderController Ver. 3.0 or later in the computer, and run **Install.exe** from the SureLab Layout and ID folder. Or, decompress the downloaded SureLab Layout and ID file and run the **Install.exe**.

Installing the Software

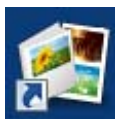
- 3 Follow the on-screen instructions.
- 4 When the screen requesting the license number is displayed, enter the license number supplied on the cover of the installation guide.



Important:

The SureLab Layout and ID license number and the SureLab OrderController license number are different.

- 5 Restart the computer when the restart screen is displayed.
- 6 When installation is complete, the following icon is displayed on the desktop.



- 7 Start SureLab Layout and ID and set software operations.

 [“Preparing in Advance” on page 10](#)

Starting and Closing

Starting

Standalone startup

Double-click the **SureLab Layout and ID** icon on the desktop.

If there is no icon on the desktop, follow the steps below.

For Windows 7:

Click **Start - All Programs - EPSON SureLab Layout and ID - SureLab Layout and ID**.

For Windows 8:

Select **Search** from charms, and then enter and select the application name.



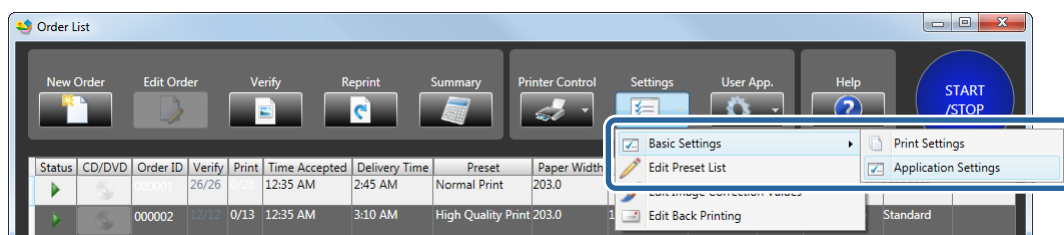
The SureLab Layout and ID START screen is displayed.

Starting from SureLab OrderController

Registering

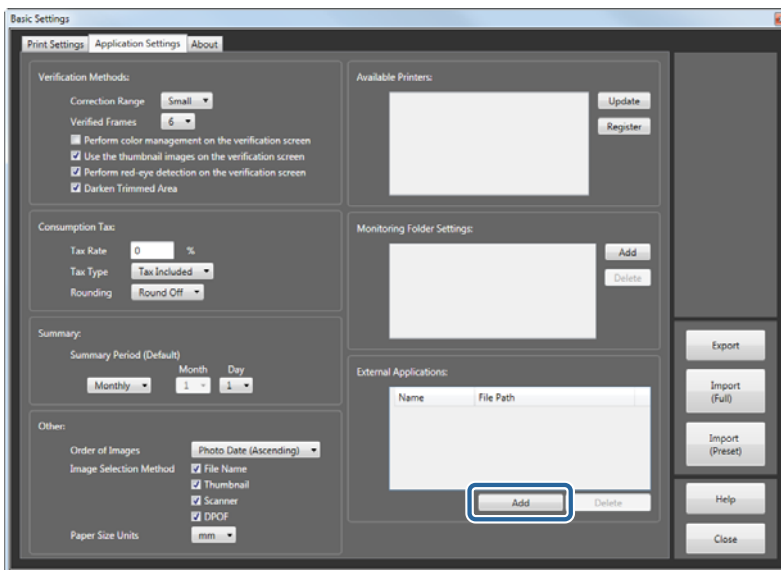
You need to register the following to start SureLab Layout and ID from SureLab OrderController.

- 1 Start SureLab OrderController.
- 2 Click **Settings** on the **Order List** screen, and then click **Basic Settings - Application Settings**.



Starting and Closing

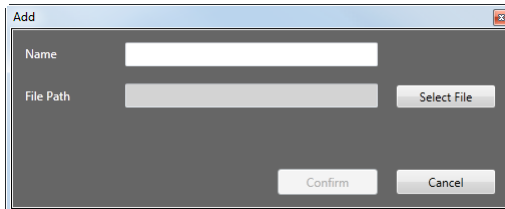
3 Click **Add** from **External Applications**.



4 Enter the application name in **Name**, and then specify the SureLab Layout and ID execution file (EMLLayoutAndID.exe) in **File Path**.

You can enter up to 16 characters for the name.
Click **Select File**, and then set the following file.

C:\Program Files (x86)\EPSON\SureLab Layout and ID\EMLLayoutAndID.exe



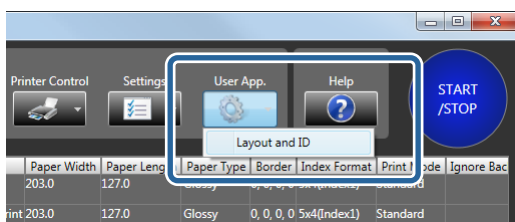
5 Click **Confirm**.

The file is added to the list of external applications, and can now be started from **User App**.

Starting

1 Start SureLab OrderController.

2 Click **User App** from the **Order List** screen in SureLab OrderController, and then click the name of the registered SureLab Layout and ID.



The SureLab Layout and ID START screen is displayed.

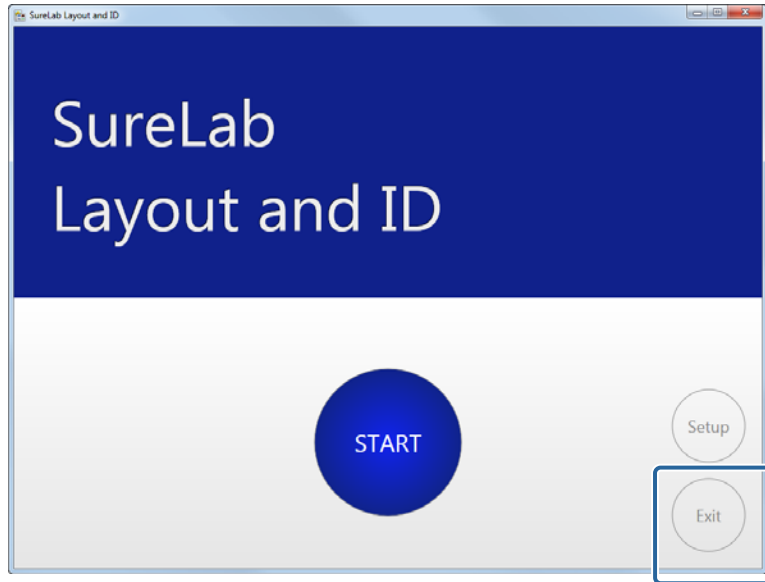
Starting and Closing

This completes this section.

Starting and Closing

Closing

Click **Exit** on the **START** screen.



SureLab Layout and ID closes.

Note:

*If **Do not display confirm completion message** is not selected in **Message Display Settings** from **System**, a confirm completion message is displayed.*

[🔗](#) "System Screen" on page 43

Before Starting Operations

Before Starting Operations

Preparing in Advance

Before creating an order, register the frames, presets, and so on that will be used in the **Setup**.

Setting Content	Summary	Settings Screen	Reference
Frame	<ul style="list-style-type: none"> <input type="checkbox"/> Add the frame you want to use. <input type="checkbox"/> Add the category for the frame you want to use. 	Frame Settings	🔗 “Adding and setting frames” on page 10
Print Layout	<ul style="list-style-type: none"> <input type="checkbox"/> Add the layout you want to use. <input type="checkbox"/> Register the layout for assigning a frame to the paper. 	Layout Settings	🔗 “Adding and setting a layout” on page 14
Media	Add and register media that can be displayed when selecting photos.	Media	🔗 “Adding and setting memory devices” on page 16
Output Destination	<p>Set the location to save the orders.</p> <p>The order output destination needs to be the same for the SureLab OrderController monitored folder and SureLab Layout and ID.</p>	System	🔗 “Setting the output destination” on page 18
Print Settings	<p>Load the print setup (print size and so on) assigned to the frame.</p> <p>You need to export the setup file (SQL file) from SureLab OrderController in advance, and import to SureLab Layout and ID.</p>	System	🔗 “Preset settings” on page 19

To create an easy-to-use environment, use **Setup** to change the default settings for the following items if necessary.

Item	Summary	Settings Screen	Reference
Order Settings	Set the save period and the output destination for the order.	System	🔗 “System Screen” on page 43
Font Settings	Register the font used for text entered in a frame.		

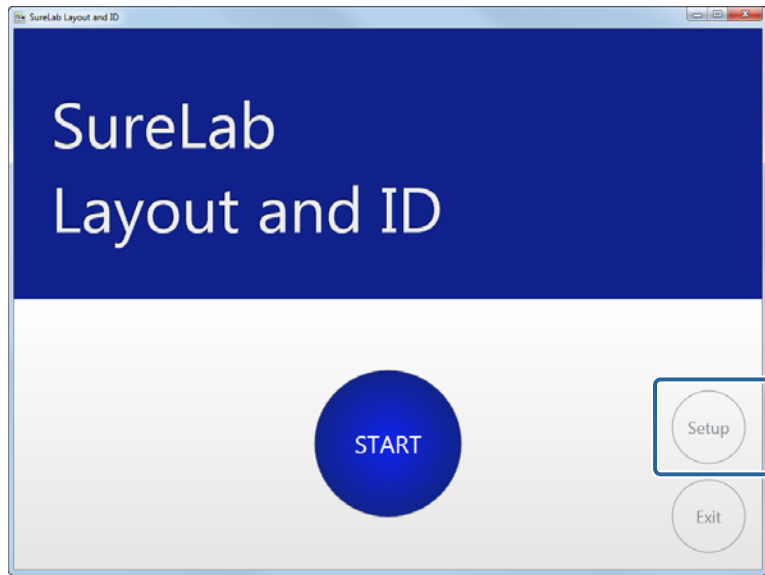
Adding and setting frames

Add files created with the tool, or png files to a frame.

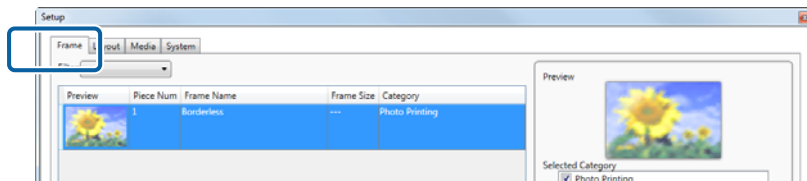
You can also make settings for frames already registered or add frames.

Before Starting Operations

- 1 Click **Setup** on the **START** screen in SureLab Layout and ID.

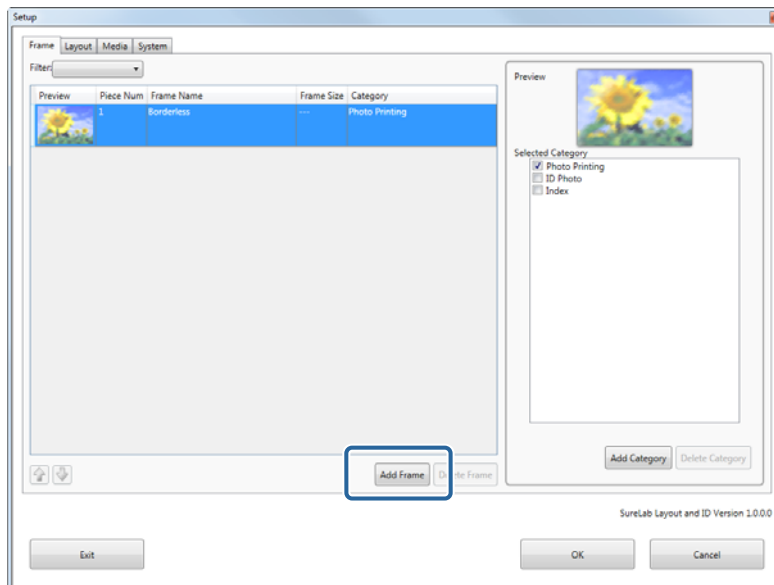


- 2 Click **Frame**.



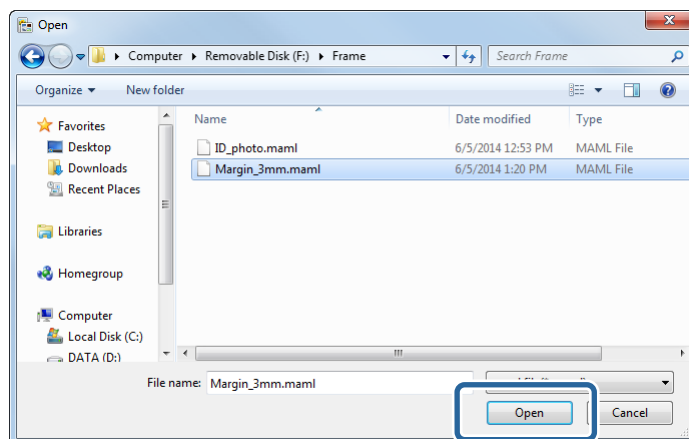
- 3 Click **Add Frame**.

If you do not want to add a frame, go to step 5.



Before Starting Operations

4 Select the frame file, and then click **Open**.

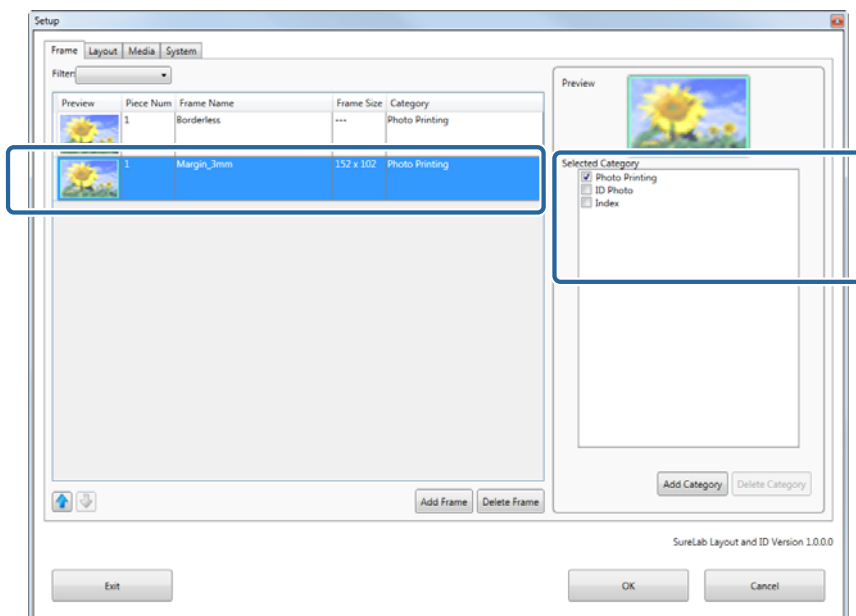


The frame is added to the bottom of the list.

Note:

- You can add files created with the tool, or png files to a frame.
- You can register up to 300 frames.

5 Click a frame, and then select the service category in **Selected Category**.

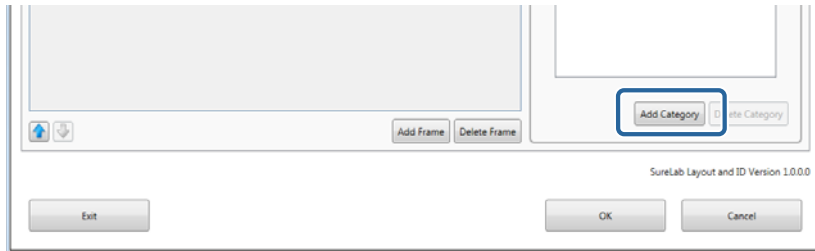


Before Starting Operations

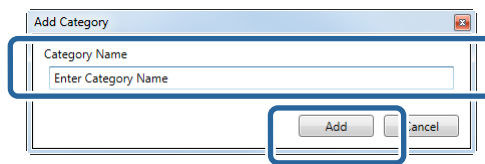
Note:

Follow the steps below to add a service category.

(1) Click **Add Category**.



(2) Enter the **Category Name**, and then click **Add**.



The new category is registered to the **Selected Category** screen.

You can register up to 10 categories.

6 Select a category for all frames to be used.

7 Click **OK**.

You are returned to the START screen.



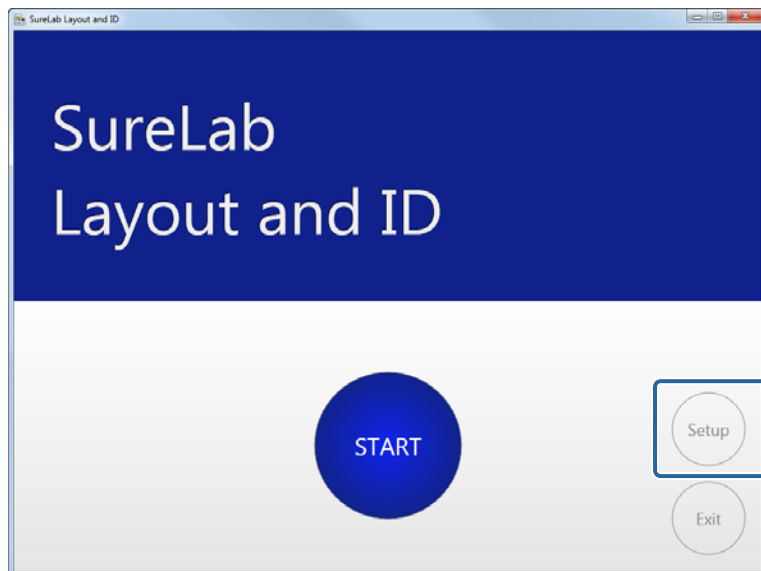
Note:

Click **Exit** to close SureLab Layout and ID.

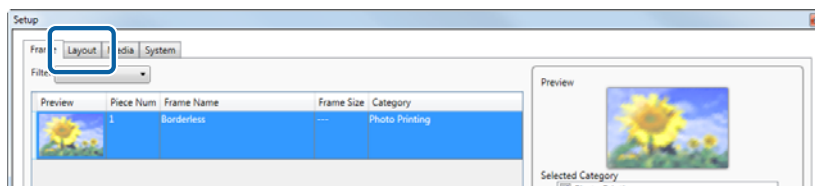
Before Starting Operations

Adding and setting a layout

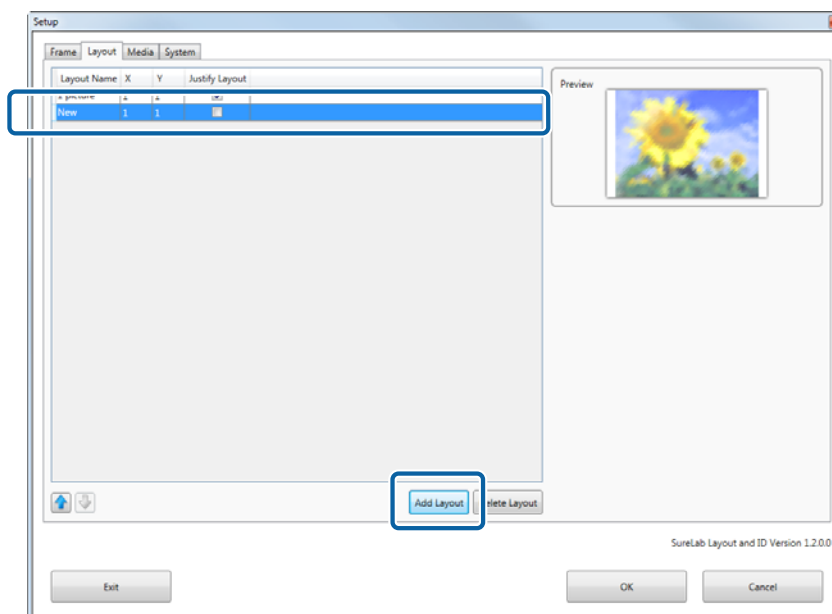
- 1 Click **Setup** on the **START** screen in SureLab Layout and ID.



- 2 Click **Layout**.



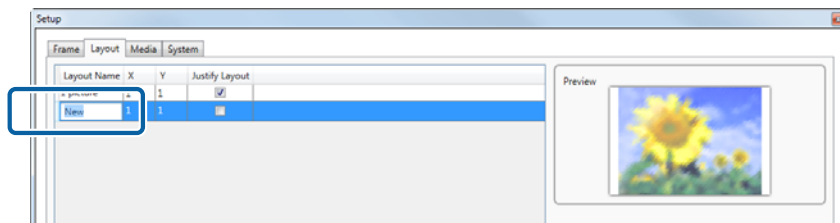
- 3 When you click **Add Layout**, the layout is added to the bottom of the list.



Before Starting Operations

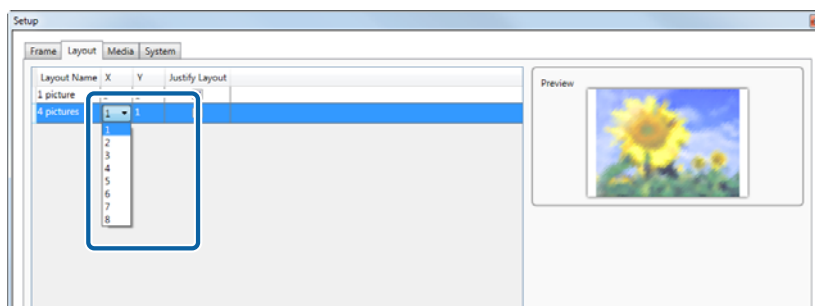
Note:
You can register up to 30 layouts.

4 Click **Layout Name**, and then enter the layout name.



5 Click **X / Y**, and then select the number of images.

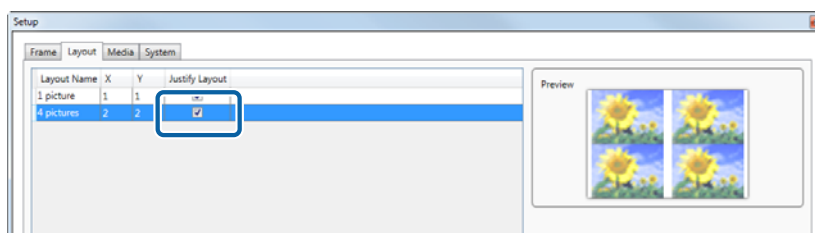
X indicates the horizontal line, and Y indicates the vertical line.



6 To justify the layout, select **Justify Layout**.

When **Justify Layout** is selected: The paper is divided equally for the number of photos, and photos are placed.

When **Justify Layout** is not selected: The frame size is maintained, and photos are placed.



7 Click **OK**.

You are returned to the START screen.

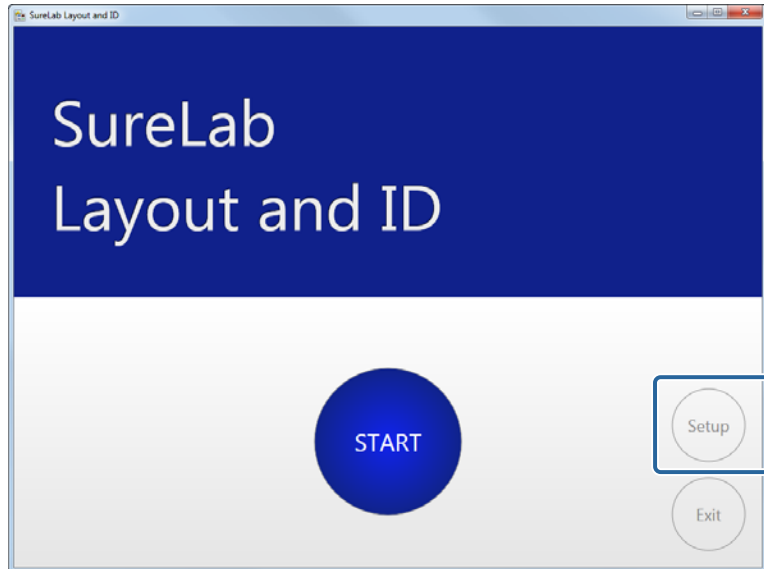


Note:
Click **Exit** to close SureLab Layout and ID.

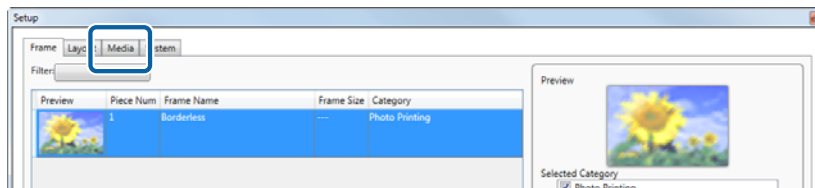
Before Starting Operations

Adding and setting memory devices

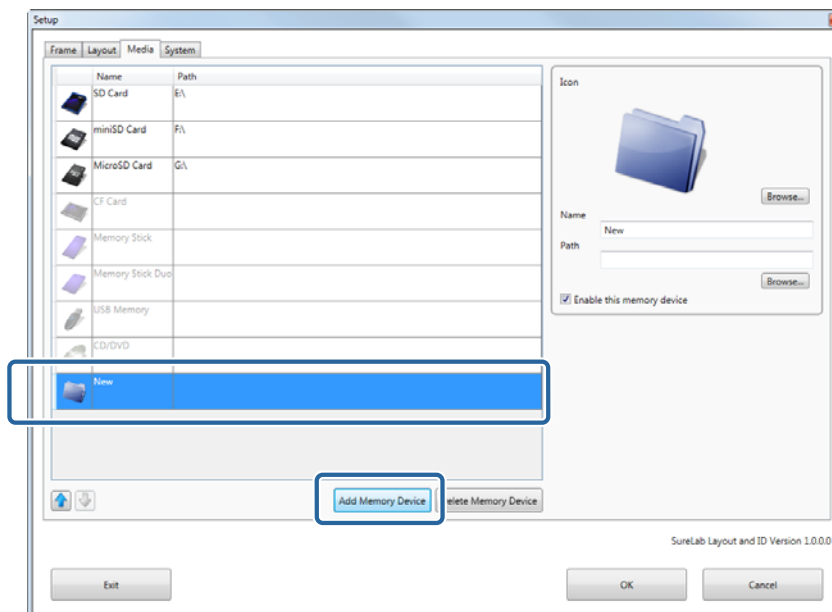
- 1 Click **Setup** on the **START** screen in SureLab Layout and ID.



- 2 Click **Media**.



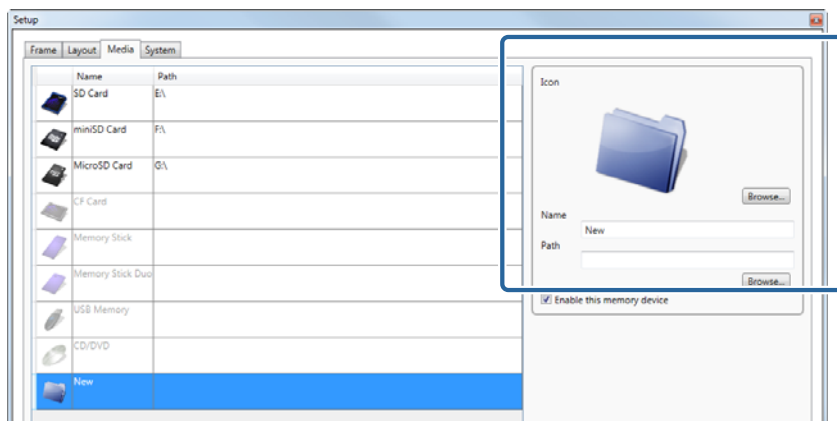
- 3 When you click **Add Memory Device**, the memory device is added to the bottom of the list.



Before Starting Operations

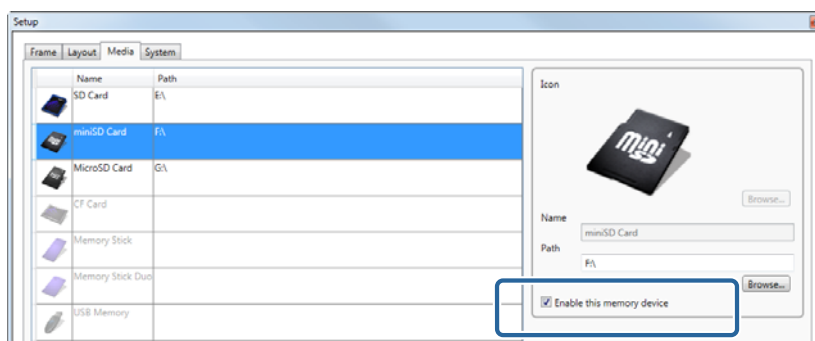
Note:
You can register up to 8 memory devices.

4 Set the **Icon**, **Name**, and **Path**.



5 When setting a memory device that has already been registered, click the memory device you want to use, and perform step 4.

6 Select **Enable this memory device**.



7 Click **OK**.

You are returned to the START screen.

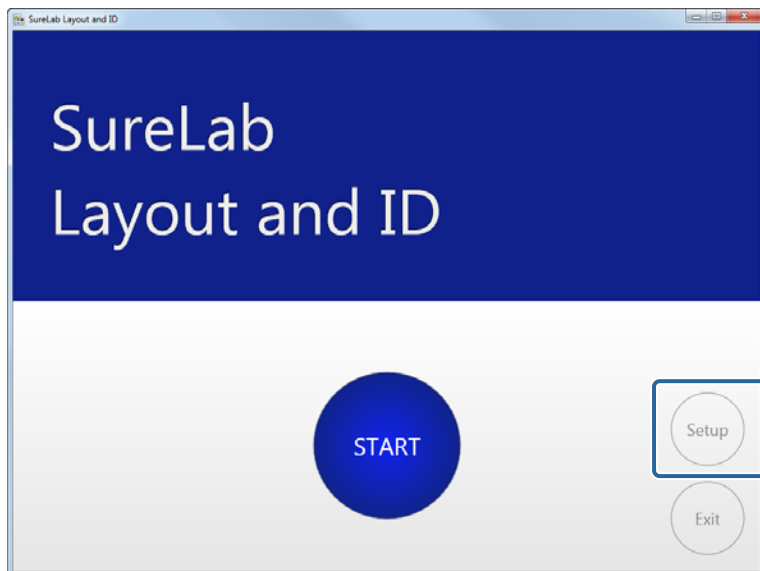


Note:
Click **Exit** to close SureLab Layout and ID.

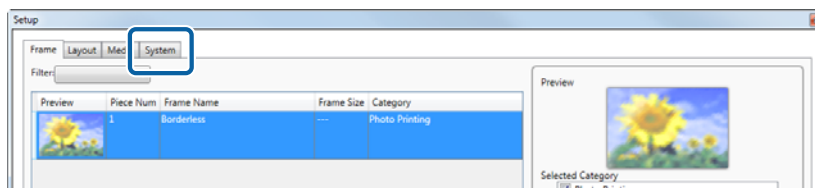
Before Starting Operations

Setting the output destination

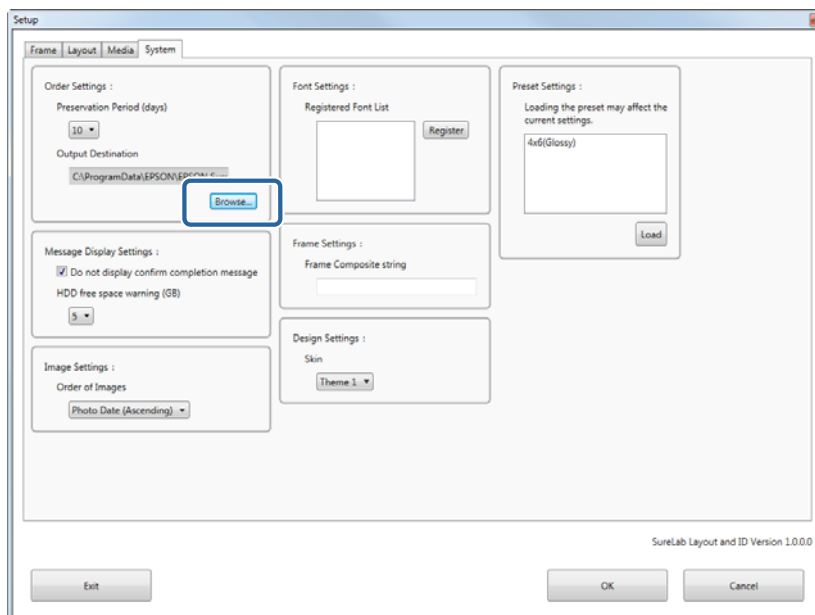
- 1 Click **Setup** on the **START** screen in SureLab Layout and ID.



- 2 Click **System**.



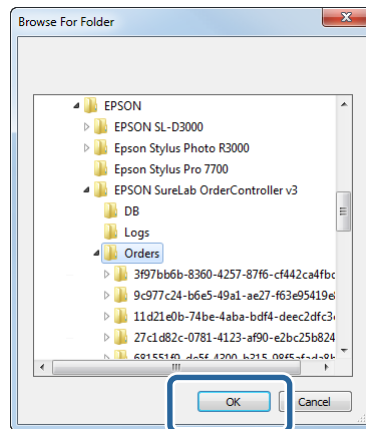
- 3 Click **Browse...** in **Output Destination** from **Order Settings**.



Before Starting Operations

- 4 Select the same folder as the folder set as the monitoring folder in SureLab OrderController, and then click **OK**.

For information on setting up the monitored folder in SureLab OrderController, see the "SureLab OrderController Operation Guide".



- 5 Click **OK**.

You are returned to the START screen.



Note:
Click *Exit* to close SureLab Layout and ID.

Preset settings

You need to export the setup file (SQL file) from SureLab OrderController in advance, and import to SureLab Layout and ID.

- 1 Export the setup file currently being used in SureLab OrderController.

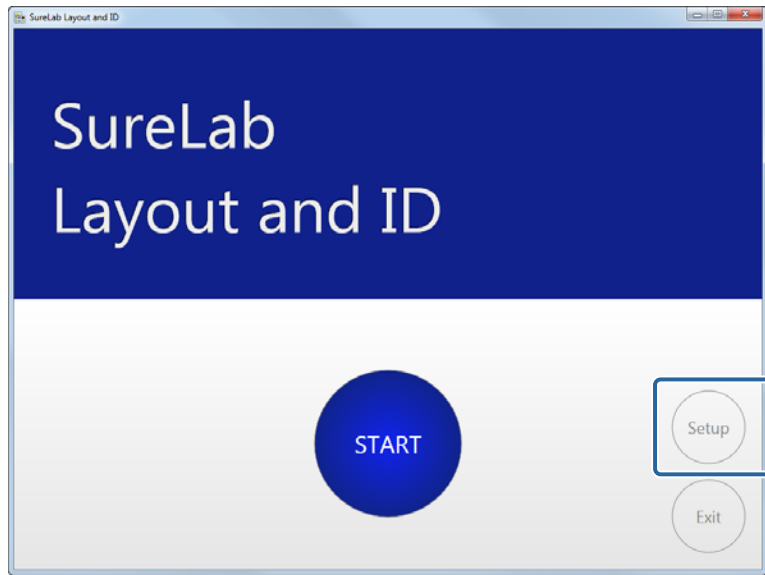
Use the current information in the setup file for SureLab OrderController.

For more information on exporting the setup file from SureLab OrderController, see the "SureLab OrderController Operation Guide". Export the setup file from the basic settings screen of the Setup screen.

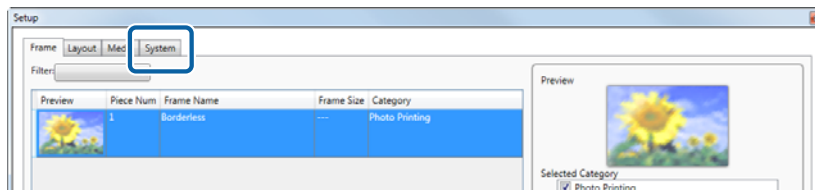
csv format files exported from the Edit Preset screen cannot be used.

Before Starting Operations

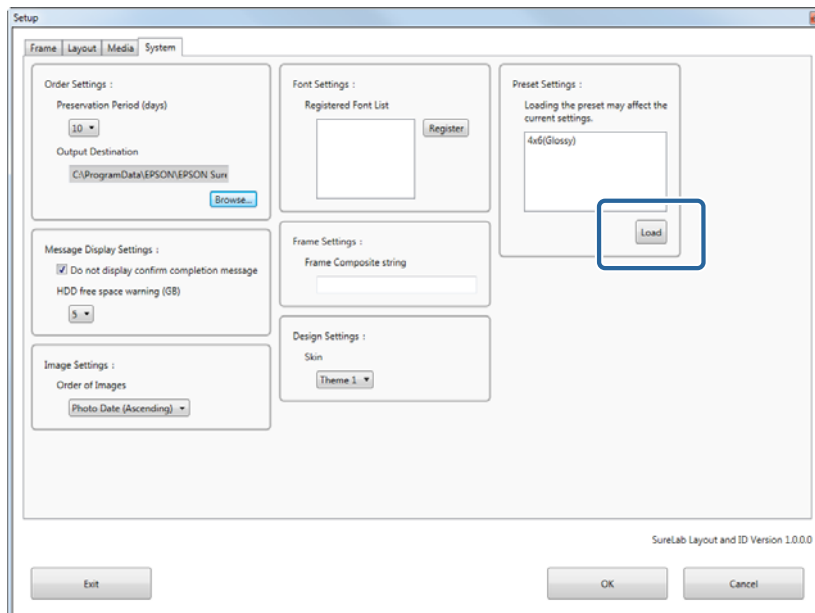
2 Click **Setup** on the **START** screen in SureLab Layout and ID.



3 Click **System**.

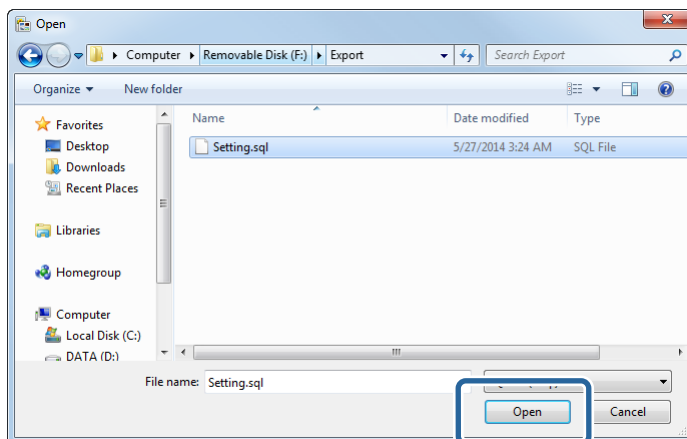


4 Click **Load** from **Preset Settings**.

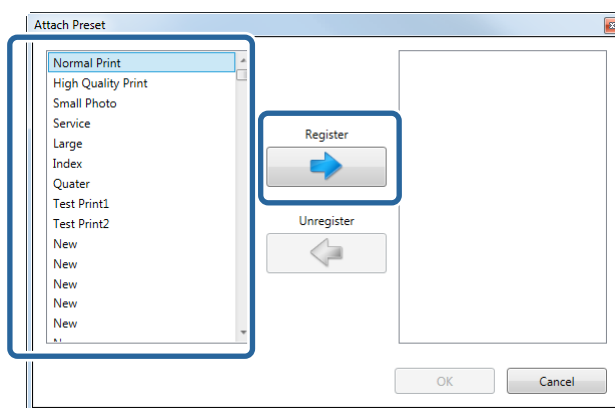


Before Starting Operations

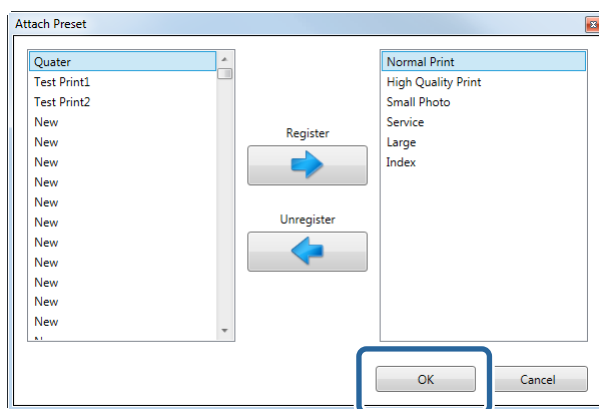
5 Select the file you exported in step 1, and then click **Open**.



6 Select the **Preset Settings** you want to use, and then click **Register**.



7 Click **OK**.



Registered presets are displayed in **Select Paper Size** when creating orders.

8 Click **OK**.

You are returned to the START screen.



Before Starting Operations

Note:

Click **Exit** to close *SureLab Layout and ID*.


Before Starting Operations

Basic Operation Workflow

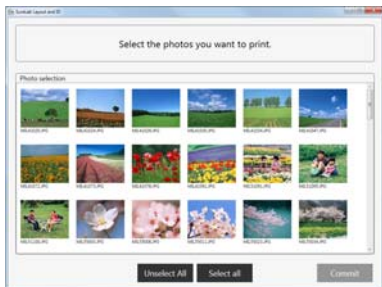
This section explains the basic operation workflow for creating an order.

1 Start		Start SureLab Layout and ID.
----------------	--	------------------------------

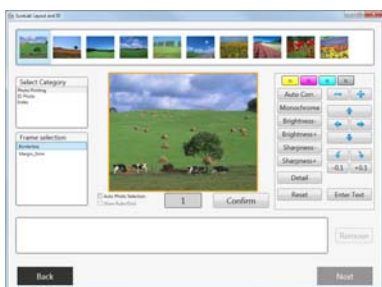


2 Select memory device		Select the memory device where your photos are saved.
-------------------------------	---	---




3 Select photos		Select the photos.
------------------------	---	--------------------



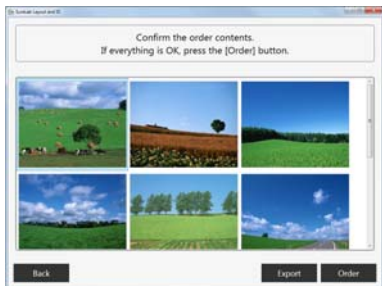
4 Select the category/ frame		Select a service category and frame for each photo. Edit and adjust photos if necessary.
---	---	---



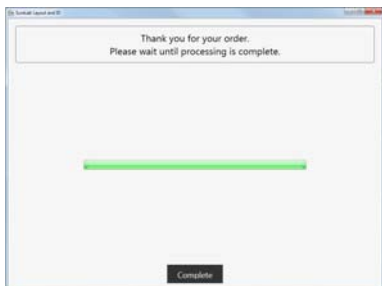
Before Starting Operations

<p>5 Select paper size</p>		<p>Select the paper size and the print layout.</p>
-----------------------------------	---	--



<p>6 New order</p>		<p>Click to create a new order.</p>
---------------------------	---	-------------------------------------



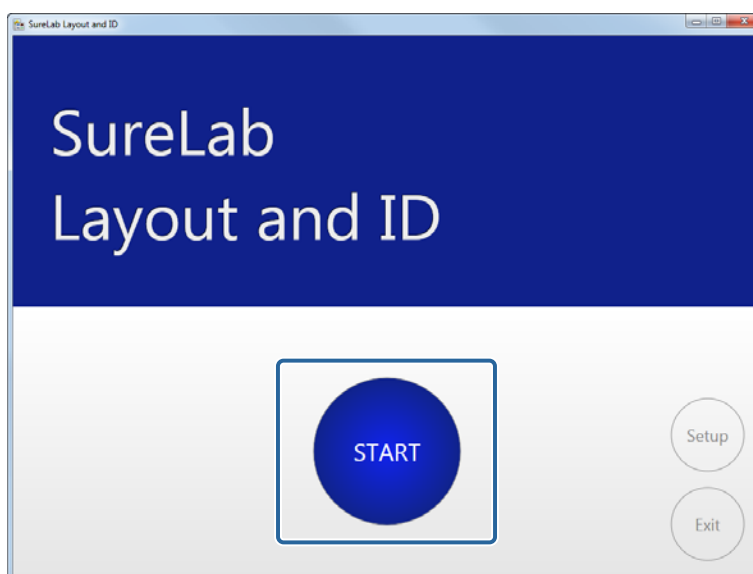
<p>7 Complete</p>		<p>Completes the operations.</p>
--------------------------	---	----------------------------------

Operating Each Service

Common Operations

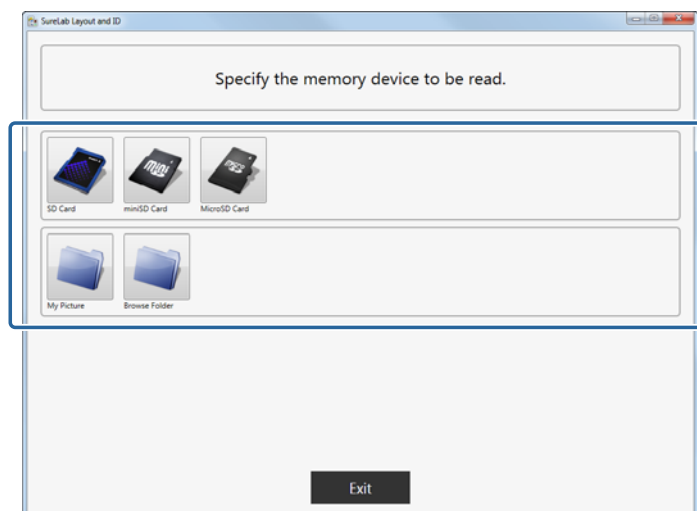
This section explains how to create an order.

- 1 Load the memory device into the computer.
- 2 Click **START** on the **START** screen in SureLab Layout and ID.



The screen for selecting a memory device is displayed.

- 3 Click the memory device or folder where the photos are saved.



The screen for selecting photos is displayed.

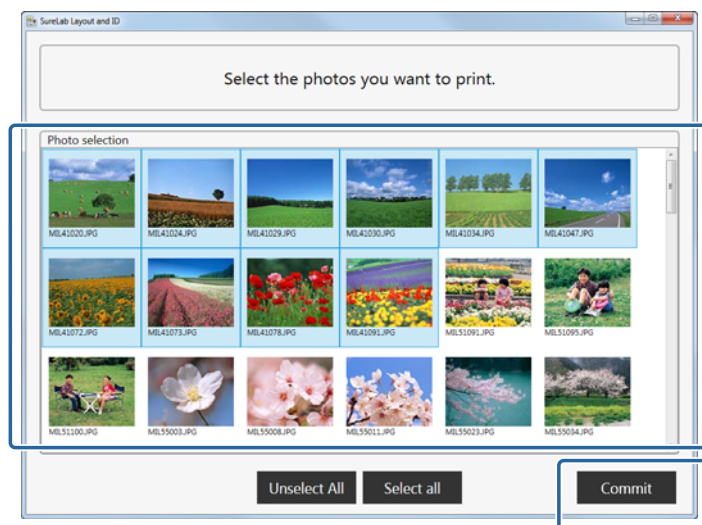
Operating Each Service

Note:

- If a confirmation screen is displayed when you select a removable memory device, check the content, and then accept.
- Register the memory device you want to use in advance in Media.
[☞ “Adding and setting memory devices” on page 16](#)

4 Select the photos, and then click **Commit**.

You can select or deselect a photo each time it is clicked, as well as select multiple photos.



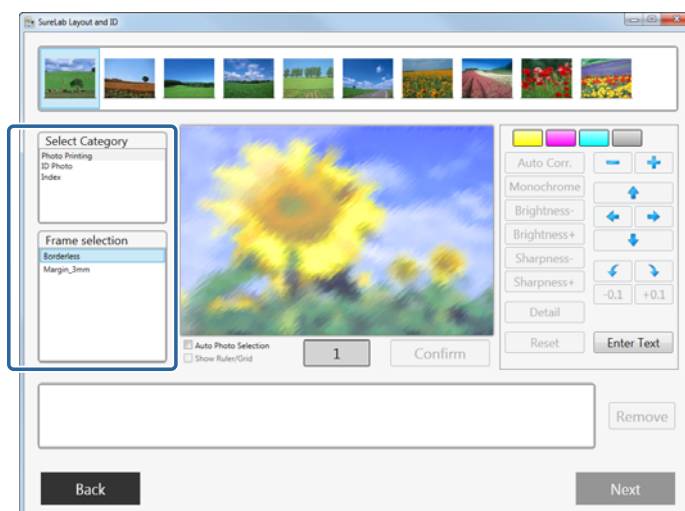
Click **Commit** to display the frame settings screen.

Note:

- Click **Select All** to select all of the photos.
- Click **Unselect All** to deselect all of the photos.

5 Select the category and frame.

Available frames differ depending on the category.



Operating Each Service

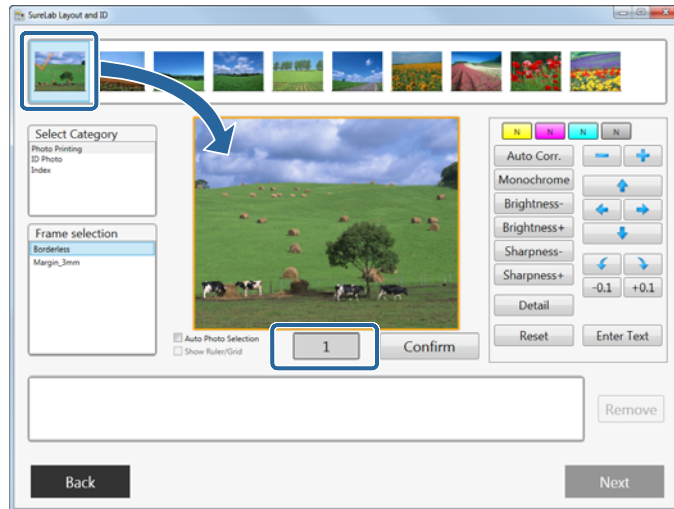
Note:

Register the category and frames to be used in advance in Frame Settings.

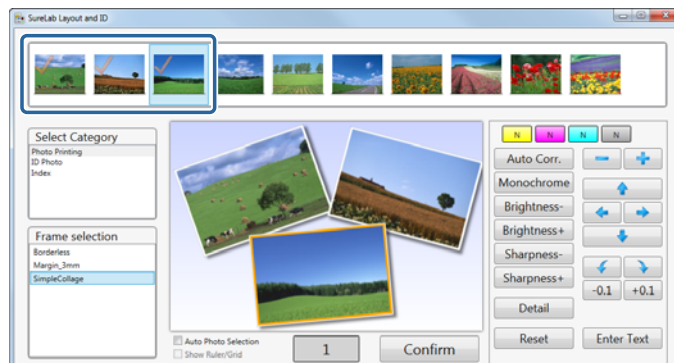
[☞ “Adding and setting frames” on page 10](#)

6 Select the photos and number of copies.

Drag the photos to the layout area, and enter the number of copies. Left click to increase the number, and right click to decrease the number.



For frames that allow you to place multiple photos, drag and arrange multiple photos.

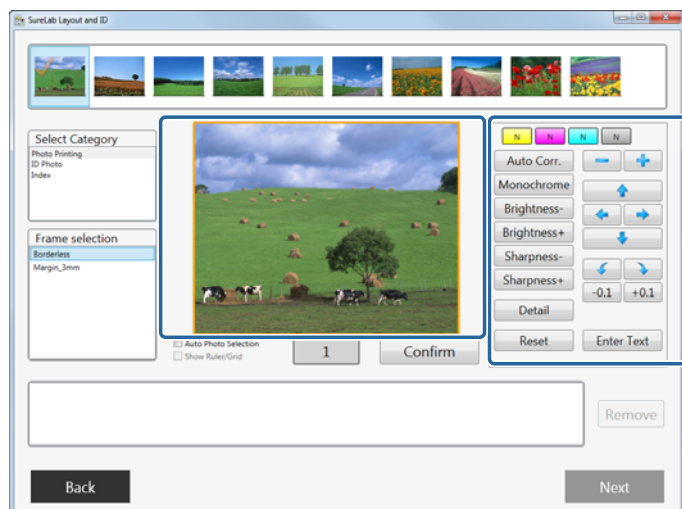


Note:

- ❑ If you reselect the frame, the photos selected are cleared.
- ❑ You can place the same photos in multiple frames.

Operating Each Service

7 When editing a photo, select the photo in the layout area, and then edit using the tool buttons on the right.



Item		Functions
Image Correction	Color Correction (Y M C)	Corrects colors for Y, M, and C. Click the button for each color and adjust the correction level. You can adjust the correction level within a range of +50 to -50. When the correction level is zero, "N" is displayed. Left-click to increase the level, and right-click to decrease the level.
	Density Correction (N)	Corrects the density. Click the button to adjust the correction level. You can adjust the correction level within a range of +70 to -70. When the correction level is zero, "N" is displayed. Left-click to increase the level, and right-click to decrease the level.
	Auto Corr.	Automatically corrects the brightness and sharpness.
	Monochrome	Changes the photos to monochrome.
	Brightness (-/+)	Adjusts the brightness. The smaller the value, the darker the image. The higher the value, the brighter the image.
	Sharpness (-/+)	Emphasizes the outlines. The smaller the value, the softer the image. The higher the value, the sharper the image.
Size (- +)		Adjusts the size. While holding down the Ctrl key, click the buttons to fine-tune the size.
Justify (↑ ↓ ← →)		Adjusts the position. While holding down the Ctrl key, click the buttons to fine-tune the position.
Rotate	↺ ↻	Rotates by 90 degrees.
	-0.1/+0.1	Rotates by 0.1 degrees.
Detail		Displays the Detail screen that allows you to setup the saturation and color processing. 📖 "Detail" on page 33

Operating Each Service

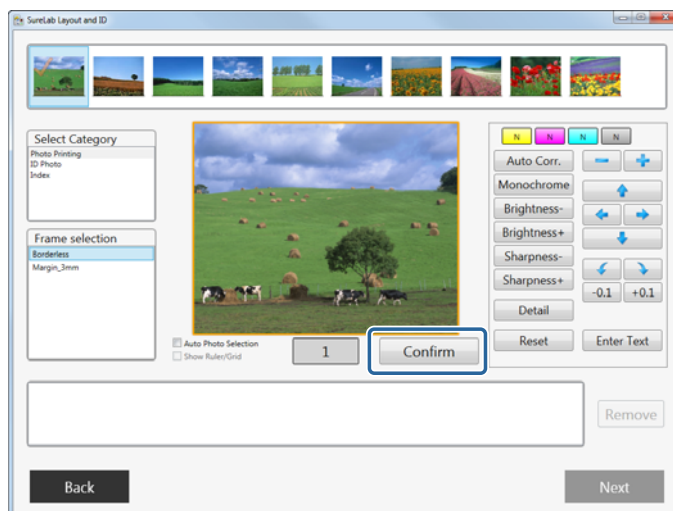
Item	Functions
Reset	Clears changed editing information and returns settings to their initial status.
Enter Text	Add and edit text on a photo. “Enter Text” on page 37

Note:

A ruler and grid are displayed when **Show Ruler/Grid** is selected. This is useful when you need to adjust the positions accurately, such as for ID photos.

8

When you have finished making photo settings, click **Confirm**.



When you click **Confirm**, photos to be printed are added to the field at the bottom.

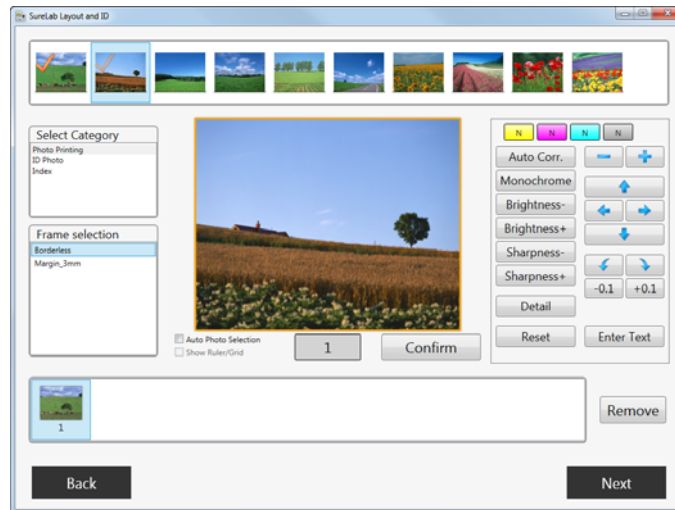
Checkmarks are added to confirmed photos.

Note:

- When **Auto Photo Selection** is selected, once you have confirmed the first frame, the next photo is automatically placed in the same frame.
- If you do not want to print a photo that has been added to the field at the bottom, select the photo, and then click **Remove**.
- Double-click a photo in the bottom field to display the **Preview** screen where you can check the photo at a larger size.

Operating Each Service

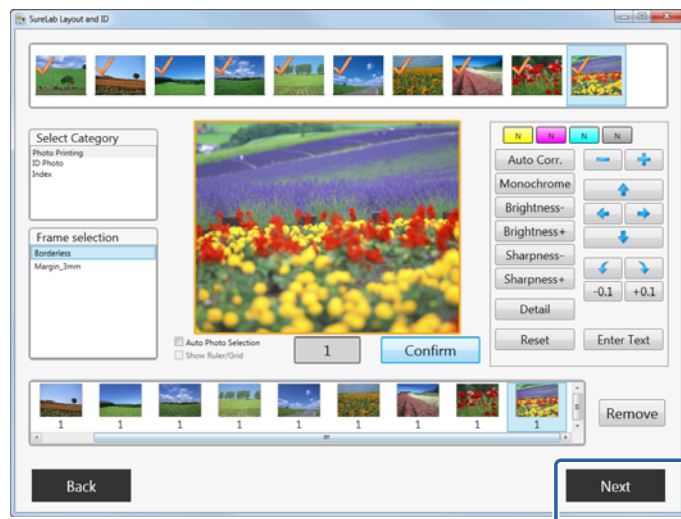
- 9 Repeat steps 5 to 8 for the next photo, and then set the number of copies for the photos.



Note:

- If you reselect the frame, the photos selected are cleared.
- You can place the same photos in multiple frames.

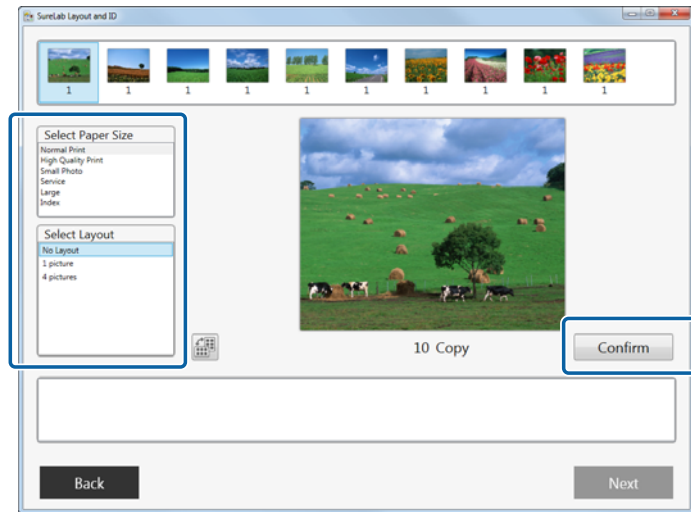
- 10 Click **Next** when you have finished making settings for all of the photos you want to print.



The screen that allows you to select the paper size and the layout is displayed.


Operating Each Service

11 Select the paper size and the layout for the paper, and then click **Confirm**.



The paper size and layout for the selected photos are confirmed, and they are displayed in the field at the bottom.

Note:

- Double-click a photo in the bottom field to display the **Preview** screen where you can check the photo at a larger size.
- Click  to switch the vertical and horizontal directions.

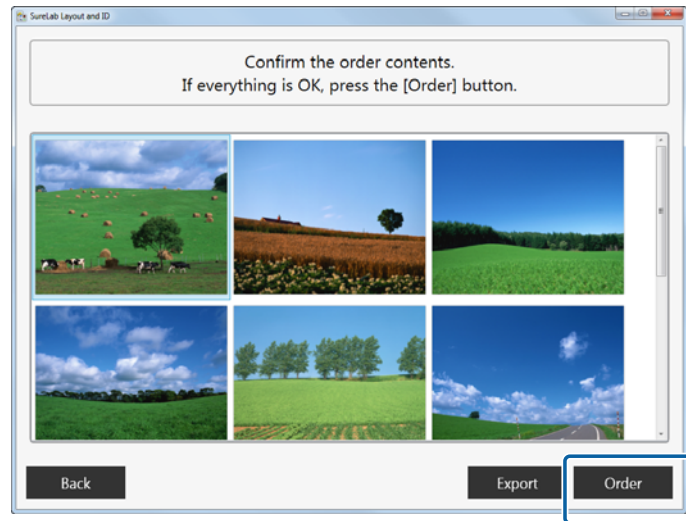
12 Click **Next**.



The order confirmation screen is displayed.

Operating Each Service

13 Check the content, and then click **Order**.

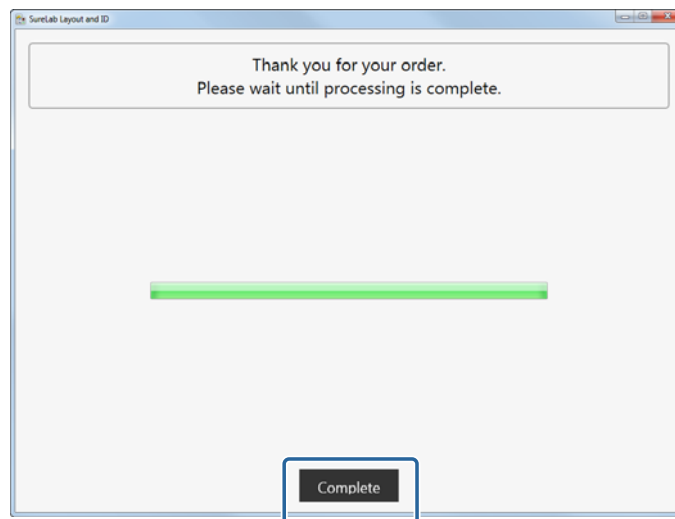


Note:

- Double-click a photo to display the **Preview** screen where you can check the photo at a larger size.
- Click **Export** to export the edited image data as a new file. When this is clicked, a folder containing the edited image data is created on your desktop. A 12-digit number is used for the folder name showing the date and time when the folder was created (the last 2-digits from the current Year + Month and Day + Hours and Seconds). The file name for each image has a number starting from 0000.

The order is registered.

14 When processing is finished, click **Complete**.



You are returned to the memory device selection.

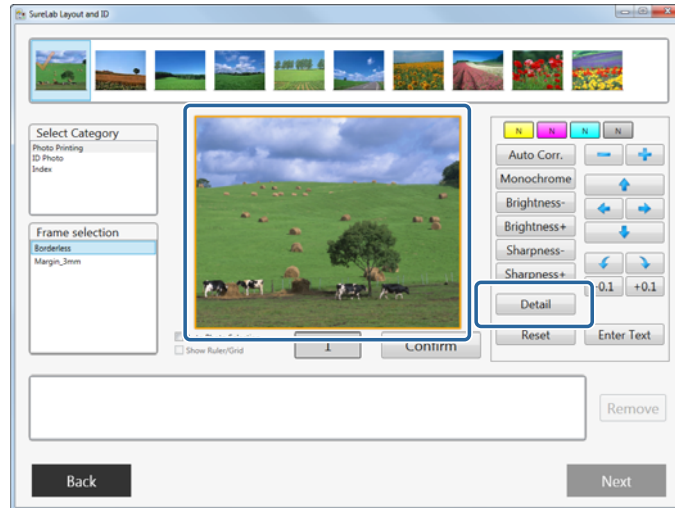
This completes this section.

Operating Each Service

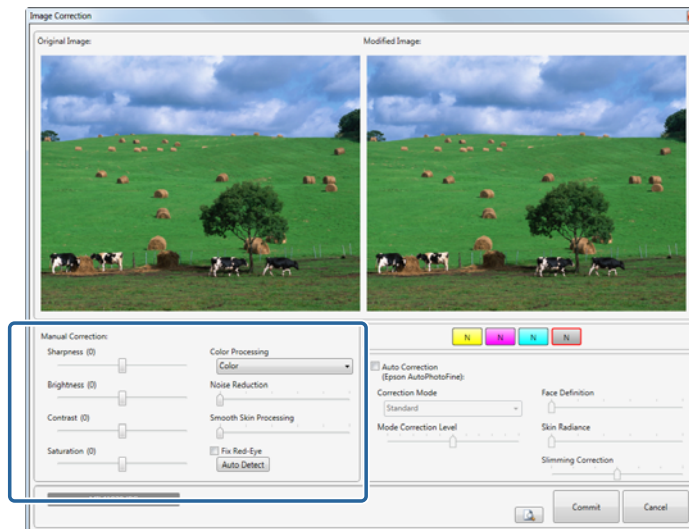
Detail

This section explains the operations when setting **Detail** on the frame settings screen.

- 1 Select the photo to be edited on the frame settings screen, and then click **Detail**.



- 2 Correct each item for manual correction.
Adjust while checking the image on the right-hand side after corrections.




Item	Functions
Sharpness	Emphasizes the outlines. You can adjust between -20 and +20. The outlines become softer as the number decreases, and sharper as the number increases.
Brightness	Adjusts the brightness. You can adjust between -20 and +20. The image becomes darker as the number decreases, and brighter as the number increases.
Contrast	Adjusts the contrast. You can adjust between -20 and +20. The gap between contrasts in the image becomes smaller as the number decreases, and bigger and clearer as the number increases.

Operating Each Service

Item	Functions
Saturation	Corrects the vividness of colors in the images. You can adjust between -20 and +20. The colors becomes dull as the number decreases, and becomes vivid as the number increases.
Color Processing	Select the color processing method from Color/Monochrome/Sepia1/Sepia2/Cool Monotone (Cool Tone)/Warm Monotone (Warm Tone).
Noise Reduction	Decreases noise in colors. You can adjust between 0 and 5. The effect becomes stronger as the number increases.
Smooth Skin Processing	Applies smooth skin effect. You can adjust between 0 and 5. The effect becomes stronger as the number increases.
Fix Red-Eye	When enabling Fix Red-Eye, check this box, and then click the area in the original image that you want to correct. When you click Auto Detect , red-eye is detected automatically and then corrected.

Note:

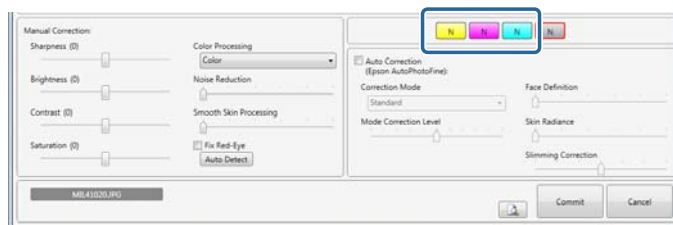
Click  (preview image) to enlarge and check the photo.

Click the **Preview** screen to close it once you have finished checking the image.

3 Click the button for each color to correct the color.

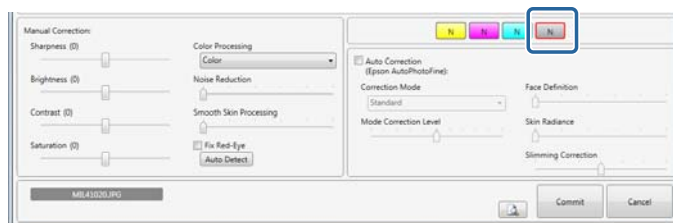
The color buttons are in the order Y (yellow), M (magenta), C (cyan).

You can adjust the correction level within a range of +50 to -50. When the correction level is zero, "N" is displayed. Left click to increase the level, and right click to decrease the level.



4 Click the Density button to correct the density.

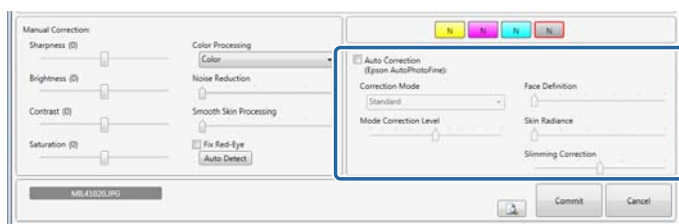
You can adjust the correction level within a range of +70 to -70. When the correction level is zero, "N" is displayed. Left click to increase the level, and right click to decrease the level.



Operating Each Service

5 Correct each item for auto correction.

Adjust while checking the image on the right-hand side after corrections.



Item	Functions	
Auto Correction	Using the Epson AutoPhotoFine (APF) function, corrections are made automatically to obtain the optimum tone.	
Correction Mode	Select the Auto Correction method according to the subject of the photo or the photo mode.	
	Standard	Automatically recognizes the subject of the photo, and applies suitable color tones.
	Portrait	Automatically recognizes people in the photo, and corrects colors using suitable flesh tones.
	Scenery	Heightens contrast and saturation, giving skies and greenery suitable color tones.
	Sunset	Strengthens red tinges in the photo, and reduces noise.
	Night	Darkens the entire photo, and reduces noise.
	Flower	Lowers the contrast and increases the saturation.
	Macro	Heightens contrast, and emphasizes outlines.
	Sport	Heightens contrast and saturation, and emphasizes outlines.
	Backlight	Brightens the backlight to correct photographic subjects that are too dark.
	Red Leaves	Corrects red colors to a suitable shade.
	Souvenir Picture	Emphasizes outlines to restore details in smaller subjects.
Filmphoto	Corrects to colors closer to film photos.	
Mode Correction Level	Changes the mode correction level. You can make adjustments from -5 to +5. The higher the value, the larger the amount of correction applied.	
Face Definition	Applies face definition effects to the image. You can adjust between 0 and 5. The effect becomes stronger as the number increases.	
Skin Radiance	Applies whitening effects to the image. You can adjust between 0 and 5. The skin color becomes whiter as the number increases.	
Slimming Correction	Applies a slimming effect to the image. You can adjust between -3 and +3. Lower values adjust vertically, and higher values adjust horizontally.	

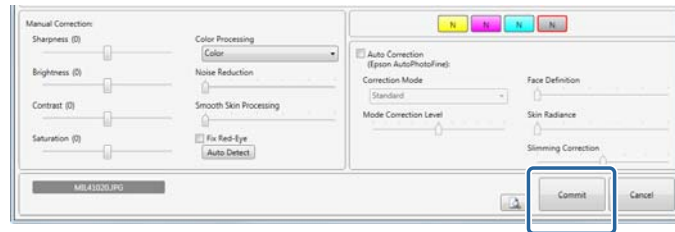
Operating Each Service

Note:

The following results may occur when printing using **Auto Correction**. If these results do occur, do not use **Auto Correction**.

- If the colors change before and after applying image processing such as rotation, enlargement, reduction, trimming, borderless printing, and so on.
- If the photos focus is not correct, and gradation is not smooth.

6 Click **Commit**.



Returns you to the frame settings screen.

This completes this section.

Operating Each Service

Enter Text

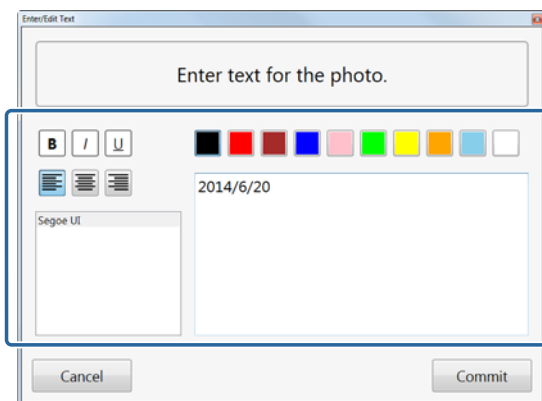
This section explains the operations when entering text on the frame settings screen.

- 1 Select the photo to which you want to add text on the frame settings screen, and then click **Enter Text**.



- 2 Enter the text and set the format.

You can set **B** (bold), *I* (italics), U (underline), text color, layout, and the font.



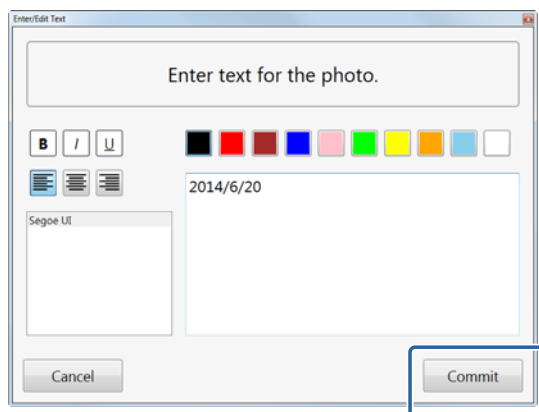
Note:

Register the font you want to use in advance in *Font Settings from System*.

[☞ "System Screen" on page 43](#)

Operating Each Service

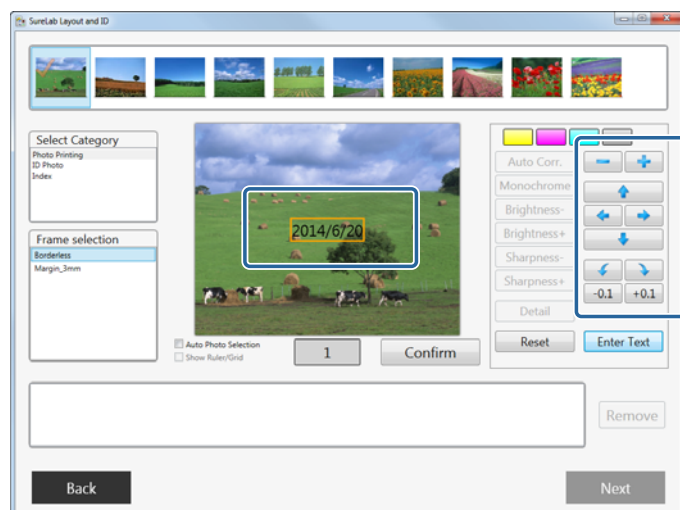
3 Click **Commit**.



The entered content is confirmed, and you are returned to the frame settings screen.

The text is entered in the frame.

4 Select the text frame, and then adjust the position and size using the tool buttons on the right.



Note:

- Text entered in the frame is retained until the frame is selected again.
- To remove text, click **Reset**.

This completes this section.

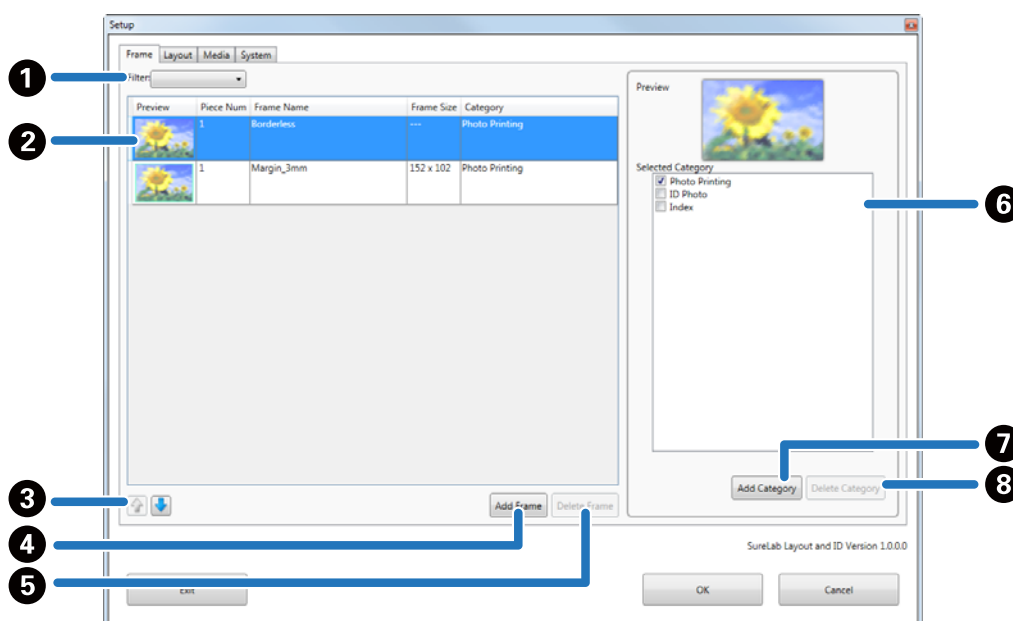
Setup Explanations

Setup Explanations

Click each setup screen to open **Setup** on the **START** screen from SureLab Layout and ID.

Frame Settings screen

You can add and delete frames and categories that can be used in Frame Settings.



Functions		Explanation
①	Filter	Select a registered category. A frame list for each category is displayed.
②	Frame name list	Displays the list of registered frames for each category.
③	Change the Priority (↑ ↓)	Changes the display order.
④	Add Frame	Click to display the screen where you can choose a frame, and then add the frame.
⑤	Delete Frame	Click to delete the selected frame.
⑥	Selected Category	Select the category you want to use.
⑦	Add Category	Enter a category name and add the category.
⑧	Delete Category	Click to delete the selected category.

Setup Explanations

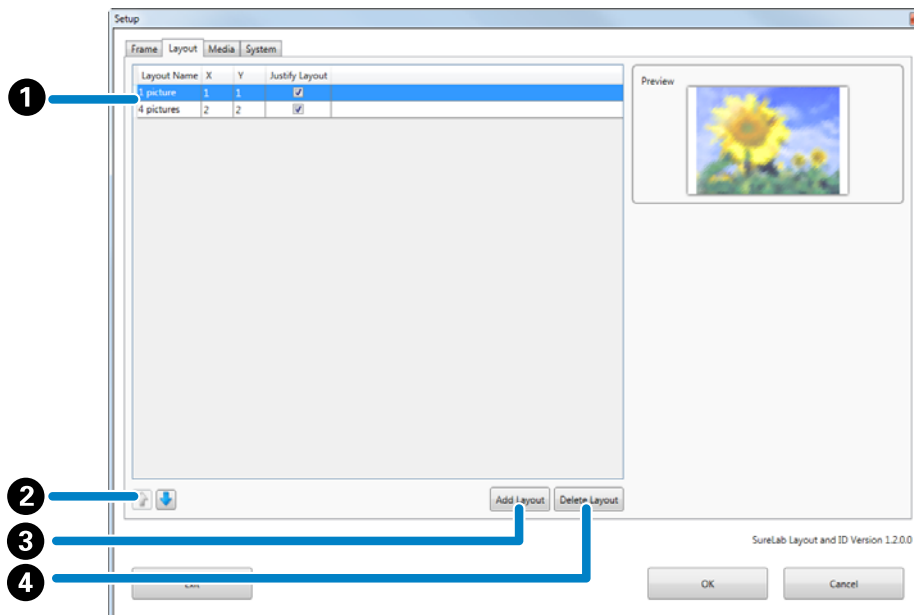
Note:

- You can add files created with the tool, or png files to a frame.
- You can register up to 300 frames.
- You can register up to 10 categories. You cannot edit or delete default categories.
- Frame Size** contains three patterns; fixed size, fixed aspect size, and free size.

Setup Explanations

Layout Settings Screen

In Layout Settings, you can set the paper or paper layout specified for printing.



Functions		Explanation
1	Layout List	<ul style="list-style-type: none"> <input type="checkbox"/> Displays the list of registered layouts. <input type="checkbox"/> You can click and change each item directly. <input type="checkbox"/> You can select the Number of Images from X and Y. X indicates the horizontal line, and Y indicates the vertical line. <input type="checkbox"/> Select Justify Layout to divide paper equally for the number of photos. For ID photos and so on, clear this to maintain the frame size.
2	Change the Priority (↑ ↓)	Changes the display order.
3	Add Layout	Click to add a layout.
4	Delete Layout	Deletes the selected layout.

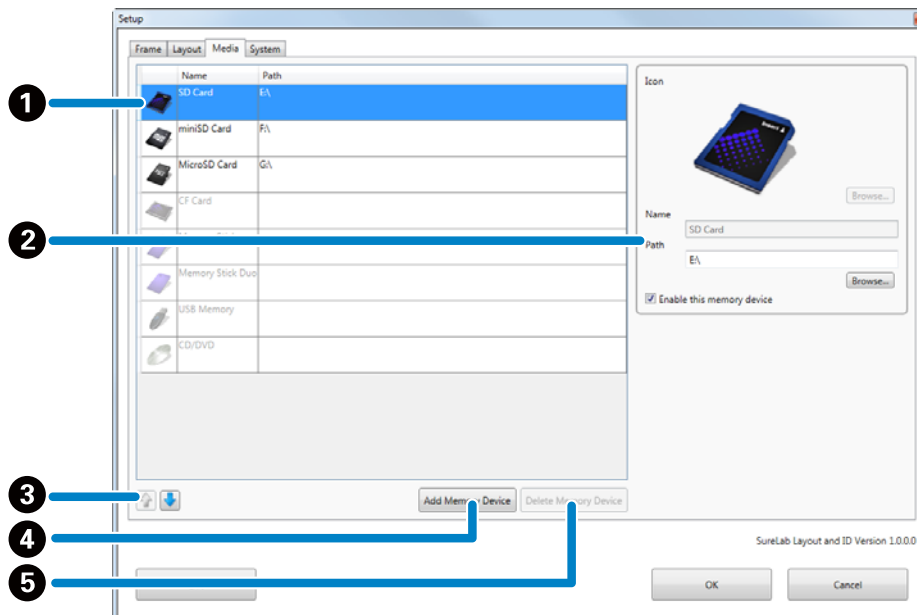
Note:

You can register up to 30 layouts.

Setup Explanations

Media Screen

In Media, you can set the drive or folder containing your saved photos.



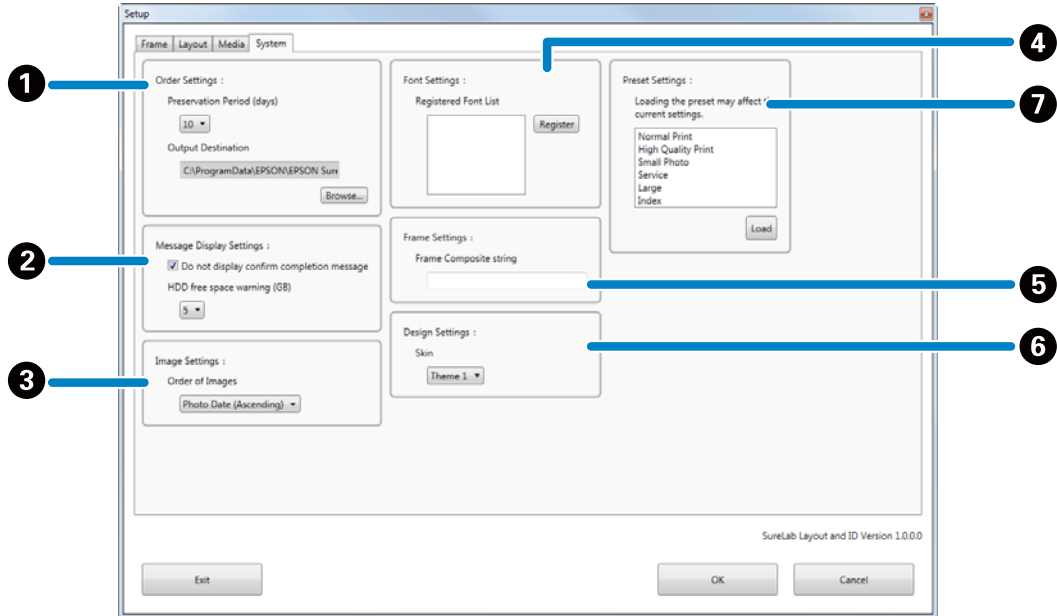
Functions		Explanation	
1	Media List	Display the list of registered memory devices.	
2	Media	Icon	Set the icon for the memory device. Use Browse... to specify an icon file on your computer.
		Name	Enter the memory device name.
		Path	Set the path. Use Browse... to set a folder on your drive or computer.
		Enable this memory device	Select whether or not to display memory devices on the Select Memory Device screen.
3	Change the Priority ()	Changes the display order.	
4	Add Memory Device	Add a new memory device.	
5	Delete Memory Device	Click to delete the selected memory device.	

Note:
 You can register up to 8 memory devices. You cannot edit or delete default memory devices.

Setup Explanations

System Screen

In System, you can change the save period and presets for an order, and the setup when creating an order.



Functions			Explanation
1	Order Settings	Preservation Period (days)	Set the preservation period. Orders for which the specified period has elapsed are deleted automatically.
		Output Destination	Set the output destination. Select Browse... , and specify the destination folder where you want to save the orders.
2	Message Display Settings	Do not display confirm completion message	Set whether or not to display a confirmation screen when closing SureLab Layout and ID.
		HDD free space warning (GB)	At startup, the free space on the hard disk for target orders is checked. The warning message is displayed when the capacity drops below the set value.
3	Image Settings	Order of Images	Set the order to display photos in selected images.
4	Font Settings	Registered Font List	Add or delete fonts that can be used for text input and editing.
5	Frame Settings	Frame Composite string	The text entered in Frame Composite string is displayed on frames that support text display area.
6	Design Settings	Skin	Change the background color and so on by changing the theme.
7	Preset Settings	Preset List	Load the preset information. In SureLab OrderController, export the setup file including the information for the preset in advance. 🔗 "Preset settings" on page 19

Appendix

Removing the Software

Follow the steps below to remove the software.



Important:

Log on to the computer as a user with administrator authority. If a password entry screen or confirmation message is displayed, enter the password to continue.

- 1 Turn on the computer.
- 2 On the **Control Panel**, click **Programs - Uninstall a program**.
- 3 Select **SureLab Layout and ID**, and then click **Uninstall/Change**.

Appendix

SEIKO EPSON CORPORATION SOFTWARE LICENSE AGREEMENT

IMPORTANT! READ THIS SOFTWARE LICENSE AGREEMENT CAREFULLY. The computer software product, fontware, typefaces and/or data, including any accompanying explanatory written materials (the "Software") should only be installed or used by the Licensee ("you") on the condition you agree with SEIKO EPSON CORPORATION ("EPSON") to the terms and conditions set forth in this Agreement. By installing or using the Software, you are representing to agree all the terms and conditions set forth in this Agreement. You should read this Agreement carefully before installing or using the Software. If you do not agree with the terms and conditions of this Agreement, you are not permitted to install or use the Software.

1. License. EPSON and its suppliers grant you a personal, nonexclusive, royalty-free, non-sublicensable limited license to install and use the Software on any single computer or computers that you intend to use directly or via network. You may allow other users of the computers connected to the network to use the Software, provided that you (a) ensure that all such users agree and are bound by the terms and conditions of this Agreement, (b) ensure that all such users use the Software only in conjunction with the computers and in relation to the network of which they form part, and (c) indemnify and keep whole EPSON and its suppliers against all damages, losses, costs, expenses and liabilities which EPSON or its suppliers may incur as a consequence of such users failing to observe and perform the terms and conditions of this Agreement. You may also make copies of the Software as necessary for backup and archival purposes, provided that the copyright notice is reproduced in its entirety on the backup copy. The term "Software" shall include the software components, media, all copies made by you and any upgrades, modified versions, updates, additions and copies of the Software licensed to you by EPSON or its suppliers. EPSON and its suppliers reserve all rights not granted herein.

2. Other Rights and Limitations. You agree not to modify, adapt or translate the Software. You also agree not to attempt to reverse engineer, decompile, disassemble or otherwise attempt to discover the source code of the Software. You may not share, rent, lease, encumber, sublicense or lend the Software. You may, however, transfer all your rights to use the Software to another person or legal entity provided that you transfer this Agreement, the Software, including all copies, updates and prior versions, to such person or entity, and that you retain no copies, including copies stored on a computer. Some states or jurisdictions, however, do not allow the restriction or limitation on transfer of the Software, so the above limitations may not apply to you.

3. Ownership. Title, ownership rights, and intellectual property rights in and to the Software and any copies thereof shall remain with EPSON or its suppliers. There is no transfer to you of any title to or ownership of the Software and this License shall not be construed as a sale of any rights in the Software. The Software is protected by Japanese Copyright Law and international copyright treaties, as well as other intellectual property laws and treaties. Except as otherwise provided in this Agreement, you may not copy the Software. You also agree not to remove or alter any copyright and other proprietary notices on any copies of the Software.

4. Protection and Security. You agree to use your best efforts and take all reasonable steps to safeguard the Software to ensure that no unauthorized person has access to them and that no unauthorized copy, publication, disclosure or distribution of any of the Software is made. You acknowledge that the Software contains valuable, confidential information and trade secrets, that unauthorized use and copying are harmful to EPSON and its suppliers, and that you have a confidentiality obligation as to such valuable information and trade secrets.

Appendix

5. Limited Warranty. In case of that you obtained the Software by media from EPSON or a dealer, EPSON warrants that the media on which the Software is recorded will be free from defects in workmanship and materials under normal use for a period of 90 days from the date of delivery to you. If the media is returned to EPSON or the dealer from which the media was obtained within 90 days of the date of delivery to you, and if EPSON determines the media to be defective and provided the media was not subject to misuse, abuse, misapplication or use in defective equipment, EPSON will replace the media, upon your return to EPSON of the Software, including all copies of any portions thereof. ALL IMPLIED WARRANTIES ON THE MEDIA, INCLUDING IMPLIED WARRANTIES OF MERCHANTABILITY AND FITNESS FOR A PARTICULAR PURPOSE, ARE LIMITED TO THE DURATION OF THE EXPRESS WARRANTY SET FORTH ABOVE.

You acknowledge and agree that the use of the Software is at your sole risk. THE SOFTWARE IS PROVIDED "AS IS" AND WITHOUT ANY WARRANTY OF ANY KIND. EPSON AND ITS SUPPLIERS DO NOT AND CANNOT WARRANT THE PERFORMANCE OR RESULTS YOU MAY OBTAIN BY USING THE SOFTWARE. THE FOREGOING STATES THE SOLE AND EXCLUSIVE REMEDIES FOR EPSON'S AND ITS SUPPLIERS' BREACH OF WARRANTY. EXCEPT FOR THE FOREGOING LIMITED WARRANTY, EPSON AND ITS SUPPLIERS MAKE NO WARRANTIES, EXPRESS OR IMPLIED, AS TO NON-INFRINGEMENT, MERCHANTABILITY OR FITNESS FOR ANY PARTICULAR PURPOSE. Some states or jurisdictions do not allow the exclusion of implied warranties or limitations on how long an implied warranty may last, so the above limitations may not apply to you. This warranty gives you specific legal rights. You may have other rights which vary from state to state or jurisdiction to jurisdiction.

IN NO EVENT WILL EPSON OR ITS SUPPLIERS BE LIABLE TO YOU, WHETHER ARISING UNDER CONTRACT, TORT (INCLUDING NEGLIGENCE), STRICT LIABILITY, BREACH OR WARRANTY, MISREPRESENTATION OR OTHERWISE, FOR ANY DIRECT, CONSEQUENTIAL, INCIDENTAL OR SPECIAL DAMAGES, INCLUDING ANY LOST PROFITS OR LOST SAVINGS, EVEN IF EPSON, ITS SUPPLIERS OR ANY REPRESENTATIVE HAS BEEN ADVISED OF THE POSSIBILITY OF SUCH DAMAGES, OR FOR ANY CLAIM BY ANY THIRD PARTY. Some states or jurisdictions, however, do not allow the exclusion or limitation of incidental, consequential or special damages, so the above limitations may not apply to you.

6. Termination. Without prejudice to any other rights EPSON has, this Agreement shall automatically terminate upon failure by you to comply with its terms. You may also terminate this Agreement at any time by uninstalling and destroying the Software and all copies thereof.

7. Export Restriction. You agree not to transfer, export or re-export the Software and any data or information which you obtained from EPSON or use the Software without a proper license under Japanese law, restrictions and regulations, or the laws of the jurisdiction in which the Software is obtained.

8. Governing Law and General Provisions. This Agreement shall be governed and construed under by the laws of Japan without regard to its conflicts of law rules. This Agreement is the entire agreement between the parties with respect to the Software, and supersedes any purchase order, communication, advertisement, or representation concerning the Software. This Agreement shall be binding upon, and inure to the benefit of, the parties hereto and their respective successors, assigns and legal representatives. If any provision herein is found void or unenforceable, it will not affect the validity of the balance of the Agreement, which shall remain valid and enforceable according to its terms. This Agreement may only be modified in writing signed by an authorized officer of EPSON.

Appendix

9. U.S. Government End Users. If you are acquiring the Software on behalf of any unit or agency of the United States Government, the following provisions apply. The Government agrees: (i) if the Software is supplied to the Department of Defense (DoD), the Software is classified as "Commercial Computer Software" and the Government is acquiring only "restricted rights" in the Software and its documentation as that term is defined in Clause 252.227-7013(c)(1) of the DFARS; and (ii) if the Software is supplied to any unit or agency of the United States Government other than DoD, the Government's rights in the Software and its documentation will be as defined in Clause 52.227-19(c)(2) of the FAR or, in the case of NASA, in Clause 18-52.227-86(d) of the NASA supplement to the FAR.

10. Internet Connection. The Software may have the ability to connect over the Internet to transmit data and/or information to and from your computer regarding the EPSON hardware and/or software that you use ("EPSON Products") including, but not limited to, EPSON Products model information, the country/region where you live, the condition of EPSON Products, etc. EPSON may alter the items of such data and/or information without your prior approval. EPSON does not collect any personally identifiable information without your permission. EPSON may, however, use non personally identifiable information for statistical purposes to improve the level of service we provide to our users. If you agree to install the Software, any transmissions to or from the Internet will be in accordance with EPSON's then-current Privacy Policy provided in EPSON Internet site.

11. Updating Software Version. The Software may have the ability to connect over the Internet to a server of EPSON or any third party entrusted by EPSON in order to update the software version (i) automatically or (ii) with your consent in advance. Such updated software shall be deemed to be the Software and be governed by this Agreement.

EPSON EULA EN 10/30/2009