

# Adobe<sup>®</sup> PostScript<sup>®</sup> 3<sup>™</sup> Expansion Unit

## User's Guide

---

CMP0020-01 EN



## Copyrights and Trademarks

---

### **Copyrights and Trademarks**

No part of this publication may be reproduced, stored in a retrieval system, or transmitted in any form or by any means, electronic, mechanical, photocopying, recording, or otherwise, without the prior written permission of Seiko Epson Corporation. The information contained herein is designed only for use with this Epson printer. Epson is not responsible for any use of this information as applied to other printers.

Neither Seiko Epson Corporation nor its affiliates shall be liable to the purchaser of this product or third parties for damages, losses, costs, or expenses incurred by the purchaser or third parties as a result of accident, misuse, or abuse of this product or unauthorized modifications, repairs, or alterations to this product, or (excluding the U.S.) failure to strictly comply with Seiko Epson Corporation's operating and maintenance instructions.

Seiko Epson Corporation shall not be liable for any damages or problems arising from the use of any options or any consumable products other than those designated as Original Epson Products or Epson Approved Products by Seiko Epson Corporation.

Seiko Epson Corporation shall not be held liable for any damage resulting from electromagnetic interference that occurs from the use of any interface cables other than those designated as Epson Approved Products by Seiko Epson Corporation.

EPSON®, EPSON EXCEED YOUR VISION, EXCEED YOUR VISION and their logos are registered trademarks or trademarks of Seiko Epson Corporation.

Microsoft®, Windows®, Windows Vista® and PowerPoint® are registered trademarks of Microsoft Corporation. Wingdings is a registered trademark of Microsoft Corporation in the United States and other countries.

Apple®, Mac®, Mac OS®, and TrueType® are registered trademarks of Apple Inc.

Intel® is a registered trademark of Intel Corporation.

PowerPC® is a registered trademark of International Business Machines Corporation.

Adobe, the Adobe logo, Adobe RGB(1998), PostScript®3™, and Reader are either registered trademarks or trademarks of Adobe Systems Incorporated in the United States and/or other countries.

Monotype is a trademark of Monotype Imaging, Inc. registered in the United States Patent and Trademark Office and may be registered in certain jurisdictions.

Albertus, Arial, Gill Sans, Joanna and Times New Roman are trademarks of The Monotype Corporation.

Coronet is a registered trademark of Ludlow Type Foundry.

ITC AvantGarde, ITC Bookman, ITC Lubalin, ITC Mona Lisa Recut, ITC Symbol, ITC Zapf Chancery and ITC Zapf Dingbats are trademarks of International Typeface Corporation.

Clarendon, Helvetica, New Century Schoolbook, Optima, Palatino, Stemple Garamond, Times and Univers are trademarks of Linotype Library GmbH and/or its subsidiaries.

Marigold and Oxford are trademarks of AlphaOmega Typography.

Antique Olive is a trademark of Marcel Olive and may be registered in certain jurisdictions.

Eurostile is trademark of Nebiolo.

## Copyrights and Trademarks

NewYork, Apple Chancery, Chicago, Geneva, Hoefler Text and Monaco are trademarks of Apple Computer, Inc.

This software is based in part on the work of the Independent JPEG Group.

*General Notice: Other product names used herein are for identification purposes only and may be trademarks of their respective owners. Epson disclaims any and all rights in those marks.*

© 2015 Seiko Epson Corporation. All rights reserved.

## Contents

### Copyrights and Trademarks

#### Before You Begin

Notes on This Guide. . . . .	5
Meanings of Symbols. . . . .	5
Operating System Versions. . . . .	5
License Information. . . . .	5
Features. . . . .	5
Simulation. . . . .	5
Direct Print. . . . .	5
Hard Disk. . . . .	5
Notes on Use. . . . .	6
Introducing the Supplied Software. . . . .	7
Contents of the Software Disc. . . . .	7

#### Setting up the Software

Windows. . . . .	8
How to install. . . . .	8
Mac OS X. . . . .	8
Installation and Setup. . . . .	8
Installing PS Folder. . . . .	9
Uninstalling PS Driver Software. . . . .	10
Windows. . . . .	10
Mac OS X. . . . .	10

#### Using the Supplied Software

PS Driver. . . . .	11
EPSON LFP Remote Panel 2. . . . .	11
Storing and Using Custom Paper Sizes. . . . .	11
PS Folder. . . . .	13
Supported File Types. . . . .	13
Using PS Folder. . . . .	13
Advanced Settings. . . . .	14

#### Troubleshooting

Control Panel Messages. . . . .	16
Unable to Print. . . . .	17
Errors Occur. . . . .	17
Printer Inoperable. . . . .	17
Encrypted PDFs Not Printing. . . . .	17
PS Files Not Printing. . . . .	17
Print Quality Issues. . . . .	17

Printed Font/Characters Do Not Match	
Display. . . . .	17
Letters or Images Are Ragged. . . . .	17
Light-Colored Lines Are Broken. . . . .	17
Colors Do Not Match. . . . .	17
Printing Results Are Uneven. . . . .	18
Other Issues. . . . .	18
PS Driver Limitations. . . . .	18
Restrictions on Installing Printer Fonts. . . . .	18

#### Appendix

System Requirements. . . . .	19
Samples of Built-in Fonts. . . . .	19
PostScript Fonts. . . . .	19
TrueType Fonts. . . . .	23

#### Software License Terms

Open Source Software Licenses. . . . .	25
--	----


## Before You Begin


# Before You Begin

## Notes on This Guide

### Meanings of Symbols

 <b>Warning:</b>	Warnings must be followed to avoid serious bodily injury.
---	---

 <b>Caution:</b>	Cautions must be followed to avoid damage to this product or bodily injury.
---	---

 <b>Important:</b>	Notes contain important information on the operation of this product.
---	---

<b>Note:</b>	Tips contain useful or additional information on the operation of this product.
--------------	---

## Operating System Versions

In this documentation, the following abbreviations are used.

### Windows

"Windows" refers to "Windows 10", "Windows 8.1", "Windows 8", "Windows 7", "Windows Vista", "Windows XP", "Windows Server 2012", "Windows Server 2008, and "Windows Server 2003".

### Mac OS X

"Mac OS X" refers to "OS X Yosemite", "OS X Mavericks", "OS X Mountain Lion", "OS X Lion", "Mac OS X v10.7.x", and "Mac OS X v10.6.8".

## License Information

Adobe Systems holds the rights to portions of this manual, which are used with permission.

## Features

The main features of this product are described below.

### Simulation

This product supports "SWOP", "Euroscale", "Japan Color2001" and other CMYK simulations, allowing you to preview results for offset printing. RGB colors can also be simulated using RGB profiles. The RGB simulations available include Adobe RGB, sRGB, and Apple RGB. The product is also capable of RGB output close to that produced by the (standard) printer driver supplied with the printer. The product supports the following color correction options: "Business Graphics", "Epson Standard (sRGB)", and "Line Drawing".

### Direct Print

The supplied "PS Folder" utility lets you print files by dragging and dropping them onto the PS Folder icon. There is no need to launch an application.

### Hard Disk

The hard disk supports the same features as the optional hard disk unit. You can:

- Display pending print jobs
- View and restart paused print jobs
- View and restart saved jobs

Attached to a compatible printer with an optional scanner for large-format multifunction printers, the product allows the device to double as a copier and scanner. For information on supported accessories and hard disk and scanning features, see the manual supplied with the printer.

## Notes on Use

Observe the following precautions when using this product:

- This product is for printers only and can not be used with computers or other devices.

For the latest information on supported printers, visit the Epson website (<http://www.epson.com>).

- The hard disk may require formatting before the product can be used with other supported printers. The hard disk can be formatted using the Administrator Menu > **Manage HDD** option in the device control panel.
- Data transferred to this product can not be copied to computers or other devices.
- Data may be recoverable from this product after it has been formatted. Epson recommends that this product be physically destroyed prior to disposal.

### Data Stored on This Product

Data stored on this product can not be copied to a computer. Be sure that the original data for print jobs stored on this device have been saved to a computer. Data may be deleted from this device as a result of:

- Static electricity or electrical noise
- Operator error
- Malfunction or repairs
- Natural disasters and other acts of God

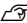
Even should it occur within the warranty period, Epson will not be held liable for loss or recovery of data stored on this device as a result of any cause, including but not limited to those listed above.

**Before You Begin**

# Introducing the Supplied Software

## Contents of the Software Disc

The supplied software disc contains the following software. Install as required.

Software name	
Epson Driver and Utilities	<p>The following software is installed.</p> <p><b>Printer Driver (PS Driver)</b> The PS printer driver is required when using this device.</p> <p>The PS printer driver is installed if installation is performed during product setup. See online help for details.</p> <p><b>EPSON LFP Remote Panel 2</b> This application is used for custom paper settings. See online help for details.</p>
PS Folder	<p>This application lets you print files in supported formats (PS, EPS, PDF, TIFF, JPEG, and CALS-G4) by dragging and dropping them onto the PS Folder icon, eliminating the need to open files in another application.</p> <p> <a href="#">"PS Folder" on page 13</a></p>

Setting up the Software

# Setting up the Software

If your computer is not equipped with a disk drive, download the latest versions of the manual and software from the Epson website.

## Windows

When installing this software, log in to an account with administrator privileges.

### How to install

Install the following software:

- PS driver
- EPSON LFP Remote Panel 2
- PS Folder

**Note:**

- Exit any anti-virus software before running the installer.
- For information on your network setup, contact the network administrator.
- If the computer is part of a network, configure the printer so it is visible on the network. Adjust network settings with reference to the printer manual.

- 1 Confirm that the printer is off.
- 2 Start Windows and insert the supplied software disc.
  - (1) In the **AutoPlay** dialog, confirm that the publisher is SEIKO EPSON and click to proceed.
  - (2) Click **Yes** or **Continue** in the **User Account Control** dialog.

- 3 When the license agreement is displayed, read the agreement, select **Accept**, and click **Next**.
- 4 Follow the on-screen instructions to complete installation.

## Mac OS X

### Installation and Setup

Configure the printer after installing the PS driver and EPSON LFP Remote Panel 2.

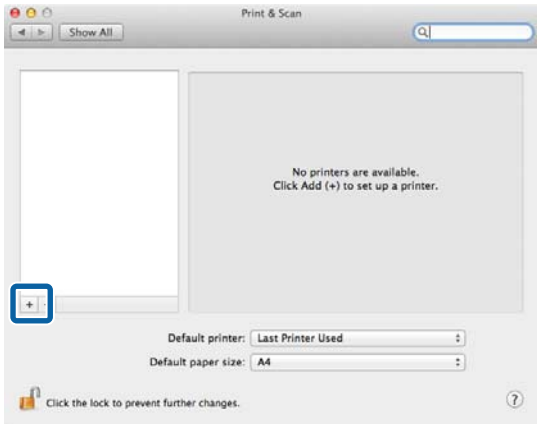
- 1 Confirm that the printer is off.
- 2 Start Mac OS X and insert the supplied software disc.
- 3 Click **Install Navi**.
- 4 When the license agreement is displayed, read the agreement, select **Accept** and click **Next**.
- 5 Follow the on-screen instructions to complete installation.
- 6 Turn the printer on.
- 7 Select **System Preferences** in the Apple menu and click **Print & Scan** (or **Print & Fax**).





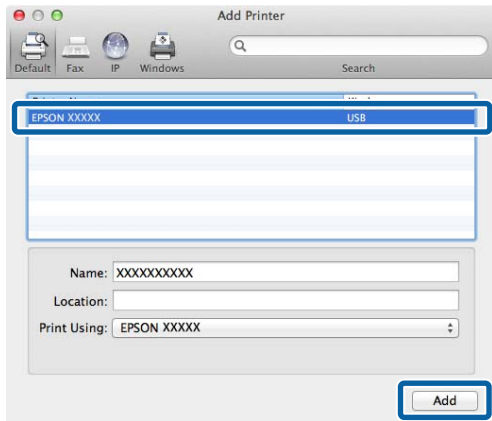
## Setting up the Software

8 Click +.



9 Select your printer and click **Add**.

**Note:**  
If your printer does not appear next to **Print Using**, reselect your printer and click **Add**.

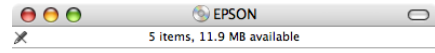


## Installing PS Folder

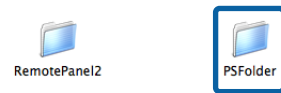
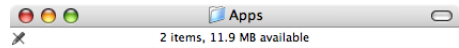
This section describes how to install PS Folder. Install as required.

1 Start Mac OS X and insert the supplied software disc.

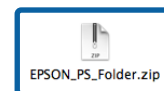
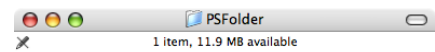
2 Scroll down to the **Apps** folder, which is concealed at the bottom of the window, and open it.



3 Click **PSFolder**.



4 Copy the zip file to the desktop and extract it.



Setting up the Software

# Uninstalling PS Driver Software

## Windows

Follow the steps below to uninstall the PS driver and the supplied software.



**Important:**

- Log in to an account with administrator privileges.
- Enter the administrator password if prompted.

**1** In the case of PS Folder, the first step is to manually delete user-created folders by dragging them into the Recycle Bin.

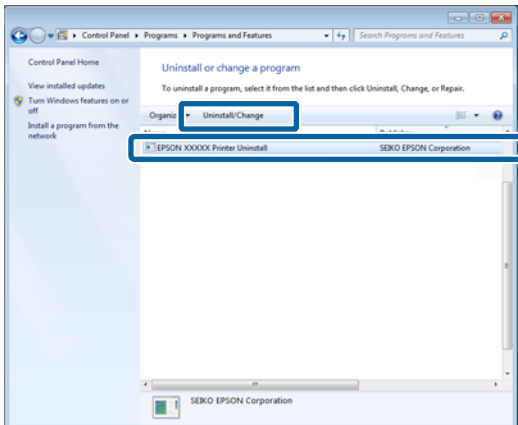
Proceed to the next step to delete the driver and other software.

**2** Turn the product off and disconnect the interface cable.

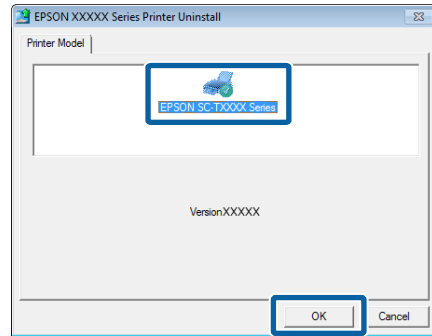
**3** Open the **Control Panel** and select **Programs > Uninstall a program**.



**4** Select the software you want to uninstall and click **Uninstall/Change** (or **Change/Remove** or **Add/Remove**).



**5** If you selected the printer driver, select the icon for this product and click **OK**.



**6** Follow the on-screen instructions to complete the process.

If a confirmation dialog is displayed, click **Yes**.

If you intend to reinstall the PS driver, restart the computer.

## Mac OS X

Uninstall the PS driver or software before upgrading to a new version or reinstalling the current version.

### Uninstalling the Printer Driver

Use the “Uninstaller”.

#### Downloading the Uninstaller

Download the “Uninstaller” from the Epson website.

<http://www.epson.com/>

#### Using the Uninstaller

Follow the instructions provided at the site from which you downloaded the “Uninstaller”.

### Uninstalling the EPSON LFP Remote Panel 2

Drag the **EPSON Remote Panel 2** folder from **Applications** into the **Trash**.

### Uninstalling the PS Folder

Manually delete user-created folders by dragging them into the **Trash**.

## Using the Supplied Software

# Using the Supplied Software

## PS Driver

This is operated in the same way as the driver provided with the printer. For details on each item, see the online help for the PS driver.

## EPSON LFP Remote Panel 2

This chapter describes features in the version of EPSON LFP Remote Panel 2 supplied on the software disc bundled with this product that are available only when this product is connected. See online help for information on other features.

## Storing and Using Custom Paper Sizes

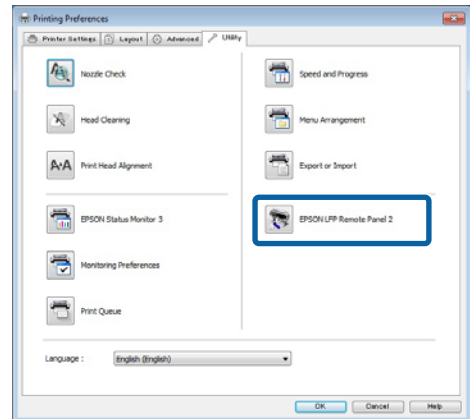
When this product is connected to the printer, you can store custom paper sizes that include printer profiles from EPSON LFP Remote Panel 2. This section describes how to store and use custom paper sizes.

## Launching EPSON LFP Remote Panel 2

### Windows

- 1 Open the **Utility** tab in the **Print Setup** dialog for your PS driver.

- 2 Click **EPSON LFP Remote Panel 2**.



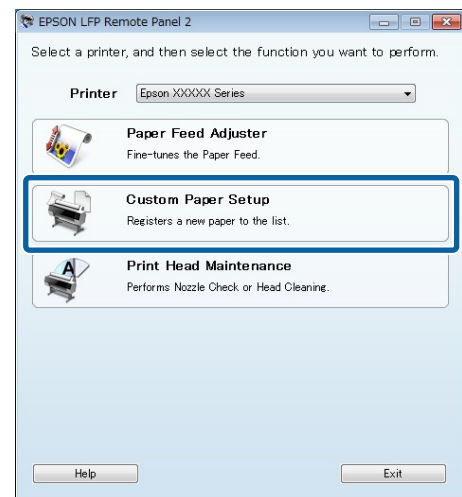
### Mac OS X

- 1 Select **System Preferences** in the Apple menu and click **Print & Scan** (or **Print & Fax**).
- 2 Select your printer and click **Options & Supplies** > **Utility** > **Open Printer Utility**.

## Saving Custom Paper Sizes

Although the description in this section is illustrated with Windows dialogs, the procedure for Mac OS X is similar.

- 1 Click **Custom Paper Setup**.

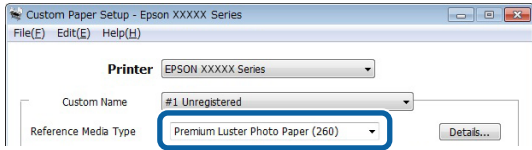


- 2 Select **#X Unregistered** for Custom Name.



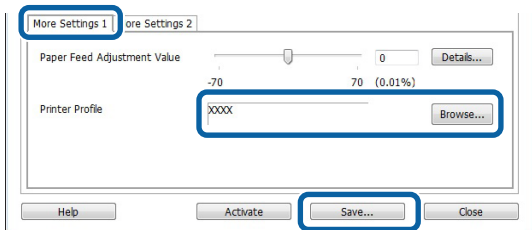
## Using the Supplied Software

- 3** For **Reference Media Type**, select the media type used when the printer profile was created.

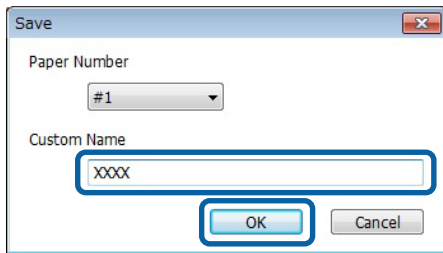


- 4** Adjust settings as required.

- 5** Click the **More Settings 1** tab, select a profile, and click **Save**.

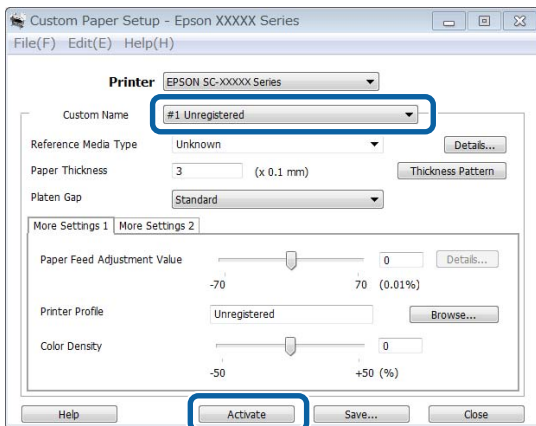


- 6** Enter a paper name in the **Save** dialog and click **OK**.



- 7** Confirm that the new custom paper name is displayed in the **Custom Paper Setup** dialog and click **Activate**.

After clicking **Activate**, exit the software.



**Note:**

Custom paper settings can also be activated from the printer control panel. For details, see the manual supplied with the printer.

- 8** Check custom paper settings.

Use the **PS Status Sheet** and **Print Paper List** options in the printer control panel to confirm that the new settings have been saved. For information on printing the status sheet and paper list, see the manual supplied with the printer.

**Note:**

Note that because custom paper settings may be changed if multiple users have access to the product, it is a good idea to provide a detailed description of each option (and file copies of the status sheet and paper list) when creating custom paper settings.

## Print Settings

Configure the PS printer driver as follows when printing using custom paper settings:

- Confirm that the **PostScript Color Transformation** option is checked or that **On** is selected for **PostScript Color Transformation**.
- Confirm that the Media Type matches the **Reference Media Type** selected when the custom paper settings were created.

**Note:**

If the printer supports multiple rolls, confirm that the desired roll is selected for **Source**.

## Deleting Custom Paper Settings

Custom paper settings can be deleted using the **Reset PS Settings** option in the printer control panel. Settings can not be deleted individually.

## Using the Supplied Software

# PS Folder

This section describes how to use the PS Folder application included on the software disc supplied with this product.

PS Folder lets you print files in supported formats by dragging and dropping them onto the PS Folder icon, eliminating the need to open files in another application. See the following sections for installation instructions.

Windows  [“How to install” on page 8](#)

Mac OS X  [“Installing PS Folder” on page 9](#)

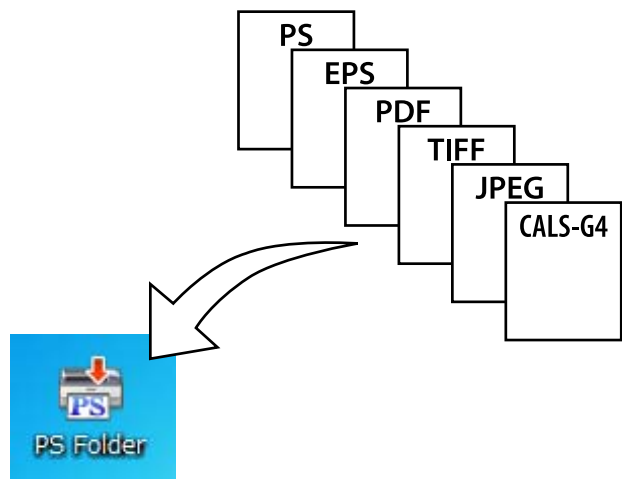
## Supported File Types

File type	Description
PS	PostScript files (ASCII only)
EPS	Encapsulated PostScript files (ASCII only; binary not supported)  If you are unable to print EPS files, select <b>Add showpage</b> in the file options and try again.
PDF	PDF version: PDF 1.7 Extension Level 3 (Adobe Acrobat 10.0 equivalent files with password protection are also supported)  PDF files in versions later than 1.7 Extension Level 3 will print without errors so long as they do not use Extension Level functions.
TIFF	Tagged Image File Format files Baseline TIFF is supported.  One pixel is treated as equivalent to one point.  The following types of compression are supported: CCITT1D, Group 3 Fax, Group 4 Fax, LZW, JPEG, and PackBits (Run Length Encoding).  ZIP compression, TIFF (TTN2), and 1-bit, YCbCr, multi-page, and alpha-channel TIFFs are not supported.
JPEG	Joint Photographic Experts Group files Baseline JPEG is supported.  JPEG 2000 are not supported.

File type	Description
CALS-G4 (Type 1)	Rasterized image files in CALS Type 1 format

## Using PS Folder

An icon for this application is created on the desktop at installation. Files can be printed simply by dropping them onto the icon.



## Creating Additional Icons

You can create additional PS Folder icons for other printers or printer settings. This section describes how to add PS Folder icons.

### Windows

- 1 Right click on an empty area of the desktop to display a context menu.
- 2 Select **EPSON PS Folder** from the New submenu.  
  
Enter a name for the new PS Folder.

### Mac OS X

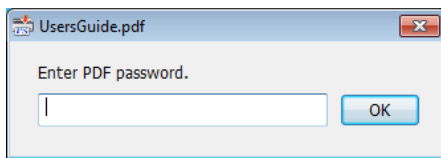
- 1 Double-click the EPSON\_PS\_Folder.zip icon on the desktop.
- 2 Move the newly-extracted copy of PS Folder to the desired location.

## Using the Supplied Software

### Printing Password-Protected PDF Files

Printing password-protected PDF files is simple. When you drop a password-protected PDF file onto the application icon on the desktop, you will be prompted to enter a password.\* Enter the password and click **OK** to print the file.

- \* Depending on PDF settings, you may not be prompted to enter a password. If a password-entry dialog is not displayed, enter the password using the printer control panel. For information on using the control panel, see the manual supplied with the printer.

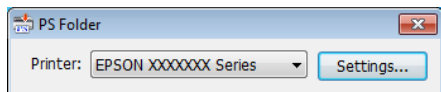


### Advanced Settings

To display the main application dialog, double-click the icon on the desktop. Click **Settings** or **OK** to open the application properties dialog and view or adjust printer settings and file options.

### Choosing a Printer

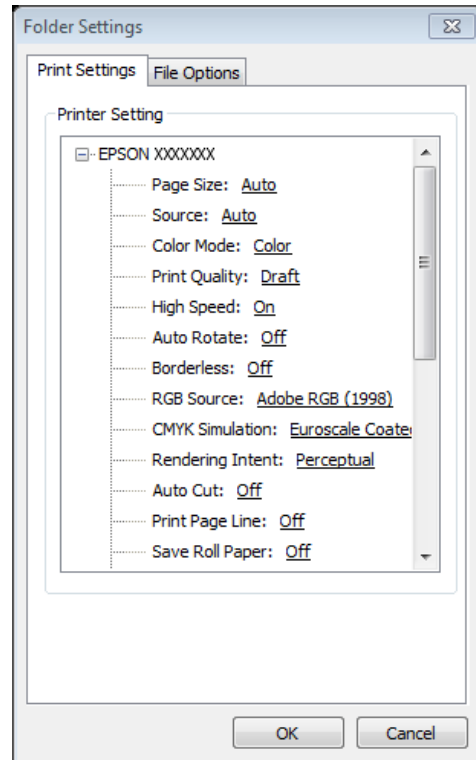
If a printer list is not displayed even though a PS driver supported by the application is installed on the computer, check that the PS driver is correctly installed. Choose a printer from the list. Under Mac OS X, the printer list will not be displayed again after you have selected a printer.



### Printer Settings

Select the **Printer Settings** tab in the dialog displayed when you click the **Settings** button in the printer selection dialog (Windows) or double-click the application icon (Mac OS X).

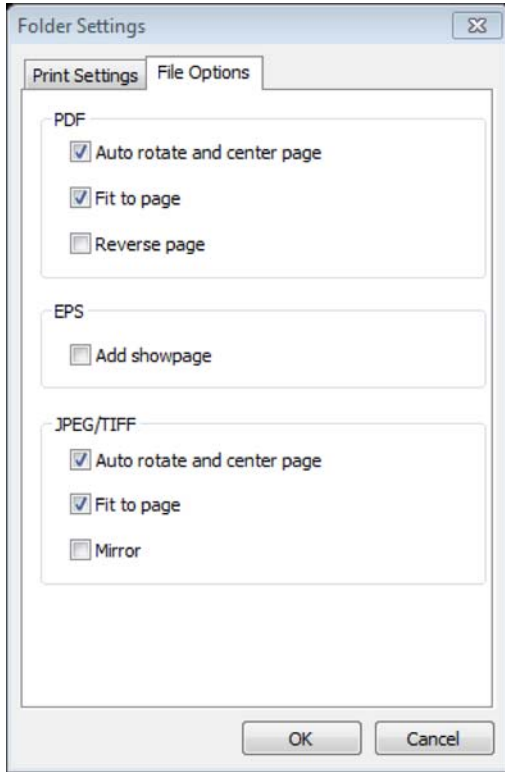
Adjust basic print settings for the application as a whole or make changes to print settings for individual files.



Using the Supplied Software

**File Option**

Select the **File Option** tab in the dialog displayed when you click the **Settings** button in the printer selection dialog (Windows) or double-click the application icon (Mac OS X). Adjust settings for each file type.



**PDF**

Option	Description
Auto rotate and Center Page	The print job is automatically rotated and printed in the center of pages of the selected size. Use the <b>Page Size</b> option in the <b>Printer Settings</b> tab to choose the page size. This option has no effect when <b>Auto</b> is selected for <b>Page Size</b> .
Fit to page	Fit output to the selected page size. Use the <b>Page Size</b> option in the <b>Printer Settings</b> tab to choose the page size. This option has no effect when <b>Auto</b> is selected for <b>Page Size</b> .
Reverse page	Reverse the order of pages when printing multi-page documents.

**EPS**

Option	Description
Add showpage	Select this option if you are unable to print EPS files.  This option adds a "showpage" command to EPS files. Some EPS files may require a "showpage" command; select this option if you are unable to print EPS files. If the file already contains a "showpage" command, selecting this option will result in a blank page being printed.

**TIFF/JPEG**

Option	Description
Auto rotate and Center Page	The print job is automatically rotated and printed in the center of pages of the selected size. Use the <b>Page Size</b> option in the <b>Printer Settings</b> tab to choose the page size. This option has no effect when <b>Auto</b> is selected for <b>Page Size</b> .
Fit to page	Fit output to the selected page size. Use the <b>Page Size</b> option in the <b>Printer Settings</b> tab to choose the page size. This option has no effect when <b>Auto</b> is selected for <b>Page Size</b> .
Mirror	Print a mirror image.

## Troubleshooting

---

# Troubleshooting

---

This chapter lists PostScript error messages and details the steps to take when the printer fails to print. For information on troubleshooting non-PostScript-related issues, see the manual supplied with the printer.

## Control Panel Messages

If the message shown below is displayed, refer to the solution listed and take the necessary steps.

Message	What to do
Firmware Error Firmware mismatch between PS3 Expansion Unit and printer. Refer to manual for details.	The firmware version for this product does not match the printer firmware version. Update the firmware for the product and printer to the latest versions. The latest versions can be downloaded from the Epson website.



## Unable to Print

This section describes how to deal with PostScript-related issues. For information on troubleshooting other problems, see the manual supplied with the printer.

### Errors Occur

- **Does your operating system meet PS driver system requirements?**

PS driver system requirements are listed on the following page.

 ["System Requirements" on page 19](#)

### Printer Inoperable

- **Are you using the correct printer driver?**

- **Windows**

Confirm that the PS driver is selected as the default printer.

(1) Click **Start** and select **Devices and Printers**.

In Windows 8.1/Windows 8, right click on the bottom left corner of the display and select **Control Panel** from the menu that appears. In Windows XP, click **Start** and select **Settings > Printers and Faxes**,

(2) Right click the icon for your PS driver.

(3) Confirm that the **Set as Default Printer** box is checked. If it is not, check it.

- **Mac OS X**

Confirm that your printer is listed in the Printer Setup Utility.

 ["Installation and Setup" on page 8](#)

### Encrypted PDFs Not Printing

- **Does your account have printing privileges?**

Check your account privileges.

### PS Files Not Printing

- **Does the printer recognize this product?**

Use the **Option Setup** command in the printer control panel to check whether the printer recognizes this product.

## Print Quality Issues

### Printed Font/Characters Do Not Match Display

- **Are the fonts embedded in the PDF file?**

If they are not, the fonts will be replaced as appropriate for printing.

### Letters or Images Are Ragged

- **Is Speed selected for Printer Settings > Resolution?**

Select **Quality** or **High Quality** for **Resolution** in the **Advanced Settings** for **Print Quality** or **Mode**.

### Light-Colored Lines Are Broken

- **Use Dot Correction.**

### Colors Do Not Match

- **Are you comparing the output to that produced by the standard driver supplied with the printer?**

Try disabling the PostScript Color Transformation option in the PS driver supplied with this product.

- **Does the media match the Reference Media Type selected for custom paper settings that include printer profiles?**

Colors will not match if you do not use media selected for **Reference Media Type**. Check the **Reference Media Type**.

- **Have custom paper settings that include a printer profile been changed?**

If this product available to multiple users, custom settings may have been changed by another user. Check that current settings match those listed in the status sheet printed when the custom settings were created.

## Troubleshooting

- **Is the printer set to the Paper Number used in the creation of custom paper settings that include a printer profile?**

If this product is available to multiple users, the setting may have been changed by another user. Use the printer driver **Acquire Info** option to check the **Paper Number**.

---

## Printing Results Are Uneven

- **Is the print head pausing frequently?**

The print head may be pausing while the printer waits for data during printing. Try selecting **On for Caching To HDD** in the printer control panel menus.

## Other Issues

---

### PS Driver Limitations

Windows may not correctly spool the data for large print jobs. If this occurs, select **Print Directly to Printer** for **Advanced Options** in the printer properties dialog.

---

### Restrictions on Installing Printer Fonts

- Do not print or perform other operations while installing printer fonts.
- When installing printer fonts, select **PostScript** for Administrator Menu > **Printer Mode** in the control panel. We recommend that you select **Auto** once installation is complete.

# Appendix

## System Requirements

The system requirements for installing and using the software for this product are listed below.

### Windows

OS	Windows XP Windows Vista Windows 7 Windows 8 Windows 8.1 Windows 10 Windows Server 2003* Windows Server 2008* Windows Server 2012*
CPU	Core 2 Duo 3.05 GHz or better
Available memory	1 GB or more
Available hard disk space	32 GB or more
Display resolution	WXGA (1280 × 768) or higher

\* EPSON PS Folder and EPSON LFP Remote Panel 2 are not supported.

**Note:**  
Log in to an "Administrator" account (an account with administrator privileges) when installing the software.

### Mac OS X

OS	Mac OS X 10.6.8 or later
CPU	Core 2 Duo 3.06 GHz or better
Memory	4 GB or more
Available hard disk space	32 GB or more
Display resolution	WXGA (1280 × 768) or higher

## Samples of Built-in Fonts

### PostScript Fonts

Albertus  
 ABCDEFGHIJKLMNOPQRSTUVWXYZ  
 abcdefghijklmnopqrstuvwxyz 0123456789

Albertus Italic  
 ABCDEFGHIJKLMNOPQRSTUVWXYZ  
 abcdefghijklmnopqrstuvwxyz 0123456789

Albertus Light  
 ABCDEFGHIJKLMNOPQRSTUVWXYZ  
 abcdefghijklmnopqrstuvwxyz 0123456789

Antipue Olive Roman  
**ABCDEFGHIJKLMNOPQRSTUVWXYZ**  
**abcdefghijklmnopqrstuvwxyz 0123456789**

Antipue Olive Italic  
**ABCDEFGHIJKLMNOPQRSTUVWXYZ**  
**abcdefghijklmnopqrstuvwxyz 0123456789**

Antipue Olive Bold  
**ABCDEFGHIJKLMNOPQRSTUVWXYZ**  
**abcdefghijklmnopqrstuvwxyz 0123456789**

Antipue Olive Compact  
**ABCDEFGHIJKLMNOPQRSTUVWXYZ**  
**abcdefghijklmnopqrstuvwxyz 0123456789**

Appendix

ITC Avant Garde Gothic Book  
ABCDEFGHIJKLMN**OPQRSTUVWXYZ**  
abcdefghijklmnpqrstuvwxy **0123456789**

ITC Avant Garde Gothic Book Oblique  
*ABCDEFGHIJKLMN**OPQRSTUVWXYZ***  
*abcdefghijklmnpqrstuvwxy 0123456789*

ITC Avant Garde Gothic Demi  
**ABCDEFGHIJKLMN**OPQRSTUVWXYZ****  
**abcdefghijklmnpqrstuvwxy 0123456789**

ITC Avant Garde Gothic Demi Oblique  
***ABCDEFGHIJKLMN**OPQRSTUVWXYZ*****  
***abcdefghijklmnpqrstuvwxy 0123456789***

Bodoni  
ABCDEFGHIJKLMN**OPQRSTUVWXYZ**  
abcdefghijklmnpqrstuvwxy 0123456789

Bodoni Italic  
*ABCDEFGHIJKLMN**OPQRSTUVWXYZ***  
*abcdefghijklmnpqrstuvwxy 0123456789*

Bodoni Bold  
**ABCDEFGHIJKLMN**OPQRSTUVWXYZ****  
**abcdefghijklmnpqrstuvwxy 0123456789**

Bodoni Bold Italic  
***ABCDEFGHIJKLMN**OPQRSTUVWXYZ*****  
***abcdefghijklmnpqrstuvwxy 0123456789***

Bodoni Poster  
**ABCDEFGHIJKLMN**OPQRSTUVWXYZ****  
**abcdefghijklmnpqrstuvwxy 0123456789**

Bodoni Poster Compressed  
**ABCDEFGHIJKLMN**OPQRSTUVWXYZ****  
**abcdefghijklmnpqrstuvwxy 0123456789**

ITC Bookman Light  
ABCDEFGHIJKLMN**OPQRSTUVWXYZ**  
abcdefghijklmnpqrstuvwxy 0123456789

ITC Bookman Light Italic  
*ABCDEFGHIJKLMN**OPQRSTUVWXYZ***  
*abcdefghijklmnpqrstuvwxy 0123456789*

ITC Bookman Demi  
**ABCDEFGHIJKLMN**OPQRSTUVWXYZ****  
**abcdefghijklmnpqrstuvwxy 0123456789**

ITC Bookman Demi Italic  
***ABCDEFGHIJKLMN**OPQRSTUVWXYZ*****  
***abcdefghijklmnpqrstuvwxy 0123456789***

Carta  
  
 0123456789

Clarendon  
**ABCDEFGHIJKLMN**OPQRSTUVWXYZ****  
**abcdefghijklmnpqrstuvwxy 0123456789**

Clarendon Light  
ABCDEFGHIJKLMN**OPQRSTUVWXYZ**  
abcdefghijklmnpqrstuvwxy 0123456789

Clarendon Bold  
**ABCDEFGHIJKLMN**OPQRSTUVWXYZ****  
**abcdefghijklmnpqrstuvwxy 0123456789**

Cooper Black  
**ABCDEFGHIJKLMN**OPQRSTUVWXYZ****  
**abcdefghijklmnpqrstuvwxy 0123456789**

Cooper Black Italic  
***ABCDEFGHIJKLMN**OPQRSTUVWXYZ*****  
***abcdefghijklmnpqrstuvwxy 0123456789***

Copperplate Gothic 32BC  
ABCDEFGHIJKLMN**OPQRSTUVWXYZ**  
ABCDEFGHIJKLMN**OPQRSTUVWXYZ** 0123456789

Copperplate Gothic 33BC  
**ABCDEFGHIJKLMN**OPQRSTUVWXYZ****  
**ABCDEFGHIJKLMN**OPQRSTUVWXYZ** 0123456789**

Coronet  
*ABCDEFGHIJKLMN**OPQRSTUVWXYZ***  
*abcdefghijklmnpqrstuvwxy 0123456789*

Courier  
ABCDEFGHIJKLMN**OPQRSTUVWXYZ**  
abcdefghijklmnpqrstuvwxy 0123456789

Courier Oblique  
*ABCDEFGHIJKLMN**OPQRSTUVWXYZ***  
*abcdefghijklmnpqrstuvwxy 0123456789*

Courier Bold  
**ABCDEFGHIJKLMN**OPQRSTUVWXYZ****  
**abcdefghijklmnpqrstuvwxy 0123456789**

Courier Bold Oblique  
***ABCDEFGHIJKLMN**OPQRSTUVWXYZ*****  
***abcdefghijklmnpqrstuvwxy 0123456789***

Eurostile  
ABCDEFGHIJKLMN**OPQRSTUVWXYZ**  
abcdefghijklmnpqrstuvwxy 0123456789

Eurostile Bold  
**ABCDEFGHIJKLMN**OPQRSTUVWXYZ****  
**abcdefghijklmnpqrstuvwxy 0123456789**

Eurostile Bold Extended No.2  
**ABCDEFGHIJKLMN**OPQRSTUVWXYZ****  
**abcdefghijklmnpqrstuvwxy 0123456789**

Eurostile Extended No.2  
ABCDEFGHIJKLMN**OPQRSTUVWXYZ**  
abcdefghijklmnpqrstuvwxy 0123456789

Appendix

GillSans

ABCDEFGHIJKLMNOPQRSTUVWXYZ  
 abcdefghijklmnopqrstuvwxyz 0123456789

GillSans Italic

ABCDEFGHIJKLMNOPQRSTUVWXYZ  
 abcdefghijklmnopqrstuvwxyz 0123456789

GillSans Bold

**ABCDEFGHIJKLMNOPQRSTUVWXYZ**  
**abcdefghijklmnopqrstuvwxyz 0123456789**

GillSans Bold Italic

**ABCDEFGHIJKLMNOPQRSTUVWXYZ**  
**abcdefghijklmnopqrstuvwxyz 0123456789**

GillSans Condensed

ABCDEFGHIJKLMNOPQRSTUVWXYZ  
 abcdefghijklmnopqrstuvwxyz 0123456789

GillSans Condensed Bold

**ABCDEFGHIJKLMNOPQRSTUVWXYZ**  
**abcdefghijklmnopqrstuvwxyz 0123456789**

GillSans Light

ABCDEFGHIJKLMNOPQRSTUVWXYZ  
 abcdefghijklmnopqrstuvwxyz 0123456789

GillSans Light Italic

ABCDEFGHIJKLMNOPQRSTUVWXYZ  
 abcdefghijklmnopqrstuvwxyz 0123456789

GillSans Extra Bold

**ABCDEFGHIJKLMNOPQRSTUVWXYZ**  
**abcdefghijklmnopqrstuvwxyz 0123456789**

Goudy Oldstyle

ABCDEFGHIJKLMNOPQRSTUVWXYZ  
 abcdefghijklmnopqrstuvwxyz 0123456789

Goudy Oldstyle Italic

ABCDEFGHIJKLMNOPQRSTUVWXYZ  
 abcdefghijklmnopqrstuvwxyz 0123456789

Goudy Bold

**ABCDEFGHIJKLMNOPQRSTUVWXYZ**  
**abcdefghijklmnopqrstuvwxyz 0123456789**

Goudy Bold Italic

**ABCDEFGHIJKLMNOPQRSTUVWXYZ**  
**abcdefghijklmnopqrstuvwxyz 0123456789**

Goudy Extra Bold

**ABCDEFGHIJKLMNOPQRSTUVWXYZ**  
**abcdefghijklmnopqrstuvwxyz 0123456789**

Helvetica

ABCDEFGHIJKLMNOPQRSTUVWXYZ  
 abcdefghijklmnopqrstuvwxyz 0123456789

Helvetica Oblique

ABCDEFGHIJKLMNOPQRSTUVWXYZ  
 abcdefghijklmnopqrstuvwxyz 0123456789

Helvetica Bold

**ABCDEFGHIJKLMNOPQRSTUVWXYZ**  
**abcdefghijklmnopqrstuvwxyz 0123456789**

Helvetica Bold Oblique

**ABCDEFGHIJKLMNOPQRSTUVWXYZ**  
**abcdefghijklmnopqrstuvwxyz 0123456789**

Helvetica Condensed

ABCDEFGHIJKLMNOPQRSTUVWXYZ  
 abcdefghijklmnopqrstuvwxyz 0123456789

Helvetica Condensed Oblique

ABCDEFGHIJKLMNOPQRSTUVWXYZ  
 abcdefghijklmnopqrstuvwxyz 0123456789

Helvetica Condensed Bold

**ABCDEFGHIJKLMNOPQRSTUVWXYZ**  
**abcdefghijklmnopqrstuvwxyz 0123456789**

Helvetica Condensed Bold Oblique

**ABCDEFGHIJKLMNOPQRSTUVWXYZ**  
**abcdefghijklmnopqrstuvwxyz 0123456789**

Helvetica Narrow

ABCDEFGHIJKLMNOPQRSTUVWXYZ  
 abcdefghijklmnopqrstuvwxyz 0123456789

Helvetica Narrow Oblique

ABCDEFGHIJKLMNOPQRSTUVWXYZ  
 abcdefghijklmnopqrstuvwxyz 0123456789

Helvetica Narrow Bold

**ABCDEFGHIJKLMNOPQRSTUVWXYZ**  
**abcdefghijklmnopqrstuvwxyz 0123456789**

Helvetica Narrow Bold Oblique

**ABCDEFGHIJKLMNOPQRSTUVWXYZ**  
**abcdefghijklmnopqrstuvwxyz 0123456789**

Joanna

ABCDEFGHIJKLMNOPQRSTUVWXYZ  
 abcdefghijklmnopqrstuvwxyz 0123456789

Joanna Italic

ABCDEFGHIJKLMNOPQRSTUVWXYZ  
 abcdefghijklmnopqrstuvwxyz 0123456789

Joanna Bold

**ABCDEFGHIJKLMNOPQRSTUVWXYZ**  
**abcdefghijklmnopqrstuvwxyz 0123456789**

Joanna Bold Italic

**ABCDEFGHIJKLMNOPQRSTUVWXYZ**  
**abcdefghijklmnopqrstuvwxyz 0123456789**

Letter Gothic

ABCDEFGHIJKLMNOPQRSTUVWXYZ  
 abcdefghijklmnopqrstuvwxyz 0123456789

Letter Gothic Slanted

ABCDEFGHIJKLMNOPQRSTUVWXYZ  
 abcdefghijklmnopqrstuvwxyz 0123456789



Appendix

Letter Gothic Bold  
 ABCDEFGHIJKLMNOPQRSTUVWXYZ  
 abcdefghijklmnopqrstuvwxyz 0123456789

Letter Gothic Bold Slanted  
 ABCDEFGHIJKLMNOPQRSTUVWXYZ  
 abcdefghijklmnopqrstuvwxyz 0123456789

ITC Lubalin Graph Book  
 ABCDEFGHIJKLMNOPQRSTUVWXYZ  
 abcdefghijklmnopqrstuvwxyz 0123456789

ITC Lubalin Graph Book Oblique  
 ABCDEFGHIJKLMNOPQRSTUVWXYZ  
 abcdefghijklmnopqrstuvwxyz 0123456789

ITC Lubalin Graph Demi  
**ABCDEFGHIJKLMNOPQRSTUVWXYZ**  
**abcdefghijklmnopqrstuvwxyz 0123456789**

ITC Lubalin Graph Demi Oblique  
**ABCDEFGHIJKLMNOPQRSTUVWXYZ**  
**abcdefghijklmnopqrstuvwxyz 0123456789**

Marigold  
 ABCDEFGHIJKLMNOPQRSTUVWXYZ  
 abcdefghijklmnopqrstuvwxyz 0123456789

ITC MonaLisa Recut  
 ABCDEFGHIJKLMNOPQRSTUVWXYZ  
 abcdefghijklmnopqrstuvwxyz 0123456789

NewCentury Schoolbook Roman  
 ABCDEFGHIJKLMNOPQRSTUVWXYZ  
 abcdefghijklmnopqrstuvwxyz 0123456789

NewCentury Schoolbook Italic  
 ABCDEFGHIJKLMNOPQRSTUVWXYZ  
 abcdefghijklmnopqrstuvwxyz 0123456789

NewCentury Schoolbook Bold  
**ABCDEFGHIJKLMNOPQRSTUVWXYZ**  
**abcdefghijklmnopqrstuvwxyz 0123456789**

NewCentury Schoolbook Bold Italic  
**ABCDEFGHIJKLMNOPQRSTUVWXYZ**  
**abcdefghijklmnopqrstuvwxyz 0123456789**

Optima  
 ABCDEFGHIJKLMNOPQRSTUVWXYZ  
 abcdefghijklmnopqrstuvwxyz 0123456789

Optima Italic  
 ABCDEFGHIJKLMNOPQRSTUVWXYZ  
 abcdefghijklmnopqrstuvwxyz 0123456789

Optima Bold  
**ABCDEFGHIJKLMNOPQRSTUVWXYZ**  
**abcdefghijklmnopqrstuvwxyz 0123456789**

Optima Bold Italic  
**ABCDEFGHIJKLMNOPQRSTUVWXYZ**  
**abcdefghijklmnopqrstuvwxyz 0123456789**

Oxford  
 ABCDEFGHIJKLMNOPQRSTUVWXYZ  
 abcdefghijklmnopqrstuvwxyz 0123456789

Palatino Roman  
 ABCDEFGHIJKLMNOPQRSTUVWXYZ  
 abcdefghijklmnopqrstuvwxyz 0123456789

Palatino Italic  
 ABCDEFGHIJKLMNOPQRSTUVWXYZ  
 abcdefghijklmnopqrstuvwxyz 0123456789

Palatino Bold  
**ABCDEFGHIJKLMNOPQRSTUVWXYZ**  
**abcdefghijklmnopqrstuvwxyz 0123456789**

Palatino Bold Italic  
**ABCDEFGHIJKLMNOPQRSTUVWXYZ**  
**abcdefghijklmnopqrstuvwxyz 0123456789**

Stempel Garamond Roman  
 ABCDEFGHIJKLMNOPQRSTUVWXYZ  
 abcdefghijklmnopqrstuvwxyz 0123456789

Stempel Garamond Italic  
 ABCDEFGHIJKLMNOPQRSTUVWXYZ  
 abcdefghijklmnopqrstuvwxyz 0123456789

Stempel Garamond Bold  
**ABCDEFGHIJKLMNOPQRSTUVWXYZ**  
**abcdefghijklmnopqrstuvwxyz 0123456789**

Stempel Garamond Bold Italic  
**ABCDEFGHIJKLMNOPQRSTUVWXYZ**  
**abcdefghijklmnopqrstuvwxyz 0123456789**

Symbol  
 ABXΔEΦΓHIθKAMNOΠΘΡΣΤΥζΩΞΨΖ  
 αβγδεφγηηικλμνοπρθστυωξψζ 0123456789

Tekton  
 ABCDEFGHIJKLMNOPQRSTUVWXYZ  
 abcdefghijklmnopqrstuvwxyz 0123456789

Times Roman  
 ABCDEFGHIJKLMNOPQRSTUVWXYZ  
 abcdefghijklmnopqrstuvwxyz 0123456789

Times Italic  
 ABCDEFGHIJKLMNOPQRSTUVWXYZ  
 abcdefghijklmnopqrstuvwxyz 0123456789

Times Bold  
**ABCDEFGHIJKLMNOPQRSTUVWXYZ**  
**abcdefghijklmnopqrstuvwxyz 0123456789**

Times Bold Italic  
**ABCDEFGHIJKLMNOPQRSTUVWXYZ**  
**abcdefghijklmnopqrstuvwxyz 0123456789**

Univers55  
 ABCDEFGHIJKLMNOPQRSTUVWXYZ  
 abcdefghijklmnopqrstuvwxyz 0123456789



Appendix

Times New Roman  
 ABCDEFGHIJKLMNOPQRSTUVWXYZ  
 abcdefghijklmnopqrstuvwxyz 0123456789

Times New Roman Italic  
*ABCDEFGHIJKLMNOPQRSTUVWXYZ*  
*abcdefghijklmnopqrstuvwxyz 0123456789*

Times New Roman Bold  
**ABCDEFGHIJKLMNOPQRSTUVWXYZ**  
**abcdefghijklmnopqrstuvwxyz 0123456789**

Times New Roman Bold Italic  
***ABCDEFGHIJKLMNOPQRSTUVWXYZ***  
***abcdefghijklmnopqrstuvwxyz 0123456789***

Wingdings  
 Ŷ ŷ Ÿ Ź Ž ƶ Ʒ ƹ ƺ ƻ Ƽ ƿ ƿ̄ ƿ̅ ƿ̆ ƿ̇ ƿ̈ ƿ̉ ƿ̊ ƿ̋ ƿ̌ ƿ̍ ƿ̎ ƿ̏ ƿ̐ ƿ̑ ƿ̒ ƿ̓ ƿ̔ ƿ̕ ƿ̖ ƿ̗ ƿ̘ ƿ̙ ƿ̚ ƿ̛ ƿ̜ ƿ̝ ƿ̞ ƿ̟ ƿ̠ ƿ̡ ƿ̢ ƿ̣ ƿ̤ ƿ̥ ƿ̦ ƿ̧ ƿ̨ ƿ̩ ƿ̪ ƿ̫ ƿ̬ ƿ̭ ƿ̮ ƿ̯ ƿ̰ ƿ̱ ƿ̲ ƿ̳ ƿ̴ ƿ̵ ƿ̶ ƿ̷ ƿ̸ ƿ̹ ƿ̺ ƿ̻ ƿ̼ ƿ̽ ƿ̾ ƿ̿ ƿ̸̅ ƿ̸̆ ƿ̸̇ ƿ̸̈ ƿ̸̉ ƿ̸̊ ƿ̸̋ ƿ̸̌ ƿ̸̍ ƿ̸̎ ƿ̸̏ ƿ̸̐ ƿ̸̑ ƿ̸̒ ƿ̸̓ ƿ̸̔ ƿ̸̕ ƿ̸̖ ƿ̸̗ ƿ̸̘ ƿ̸̙ ƿ̸̚ ƿ̸̛ ƿ̸̜ ƿ̸̝ ƿ̸̞ ƿ̸̟ ƿ̸̠ ƿ̸̡ ƿ̸̢ ƿ̸̣ ƿ̸̤ ƿ̸̥ ƿ̸̦ ƿ̸̧ ƿ̸̨ ƿ̸̩ ƿ̸̪ ƿ̸̫ ƿ̸̬ ƿ̸̭ ƿ̸̮ ƿ̸̯ ƿ̸̰ ƿ̸̱ ƿ̸̲ ƿ̸̳ ƿ̸̴ ƿ̸̵ ƿ̸̶ ƿ̸̷ ƿ̸̸ ƿ̸̹ ƿ̸̺ ƿ̸̻ ƿ̸̼ ƿ̸̽ ƿ̸̾ ƿ̸̿



---

# Software License Terms

---

## Open Source Software Licenses

### OPEN SOURCE SOFTWARE LICENSE

- 1) This printer product includes open source software programs listed in Section 5) according to the license terms of each open source software program.
- 2) We provide the source code of the GPL Programs, LGPL Programs (each is defined in Section 5) until five (5) years after the discontinuation of same model of this printer product. If you desire to receive the source code above, please see the "Contacting Epson Support" in the User's Guide, and contact the customer support of your region. You shall comply with the license terms of each open source software program.
- 3) The open source software programs are WITHOUT ANY WARRANTY; without even the implied warranty of MERCHANTABILITY AND FITNESS FOR A PARTICULAR PURPOSE. See the license agreements of each open source software program for more details, which are described on \Manual\data\OSS.pdf in the Printer Software Disc.
- 4) The license terms of each open source software program are described on \Manual\data\OSS.pdf in the Printer Software Disc.
- 5) The list of open source software programs which this printer product includes are as follows.

#### GNU GPL

This printer product includes the open source software programs which apply the GNU General Public License Version 2 or later version ("GPL Programs").

The list of GPL Programs:

u-boot-2011.12-axp  
linux-3.2.40-axp  
busybox-1.18.4  
lzo-2.06  
mtd-utils-1.4.4  
scrub-2.4  
smartmontools-5.40

#### GNU Lesser GPL

This printer product includes the open source software programs "libusb-1.0.8" which apply the GNU Lesser General Public License Version 2 or later version ("Lesser GPL Programs").

#### BSD License (Berkeley Software Distribution License)

This printer product includes the open source software program "busybox-1.18.4" which apply the Berkeley Software Distribution License ("BSD Program").

#### Sun RPC License

This printer product includes the open source software program "busybox-1.18.4" which apply the Sun RPC License ("Sun RPC Program").