

EN Notes on Change in Firmware

❑ Chip units can now be replaced at any time.

Previously, there were limits on the period in which chip units could be replaced. However, the addition of the “Charge” and “Reservation” functions makes it possible to change the chip units in advance without having to wait for the ink level to be less than 70 mm from the base of the ink tank.

❑ On the control panel, you can now see the information about the amount of available ink, which was written (charged) to the printer from the ink chip.

When you attach a new chip unit to the printer, information about the amount of ink available in one ink pack is written (charged) to the printer. The information that was written (charged) to the printer about the amount of ink that is available appears as blue bars on the control panel. The blue bars decrease in accordance with the estimated consumption of the remaining ink.

❑ Chip units can now be reserved.

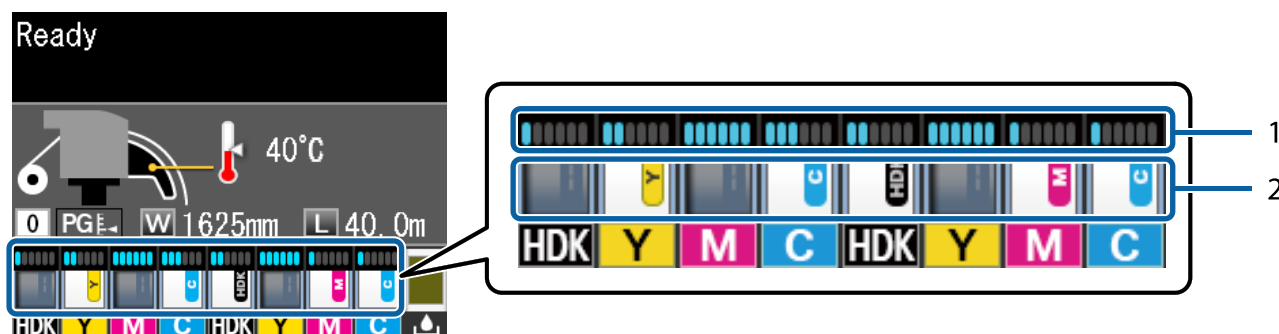
A chip unit that has finished charging can be replaced with a new chip unit at any time. By leaving the following new chip unit installed as is (reservation) on the slider on a printer that shows the estimated ink amount, the chip data is written (charged) to the printer when the estimated remaining ink has been expended.

The above changes result in the following three changes. For more information, see the following items and read them in place of the latest User's Guide (PDF).

- Changes to the control panel display
- Chip unit replacement by reservation and ink refills
- Added menu to the control panel

Changes to the control panel display

An icon indicating the charge status has been added to the printer, and the form of the icon that show the chip unit status was changed.



1. Charge status

The ink level is estimated from the status of ink usage and information about the available amount of ink in one chip unit that was written (charged) to the printer; and then it is displayed.



: There is no problem because the estimated ink level is more than 70 mm from the ink tank base. The display changes according to the conditions of ink usage.



: Check the ink level. When the ink level is 70 mm or less from the base of the ink tank, replace the chip unit and refill from one ink pack. If there is more than 70 mm, continue using the ink until it is below 70 mm, and then replace and refill it.

2. Chip unit status

The chip unit status is indicated below.



: Chip unit has not been reserved.
A chip unit is not attached or a chip unit is attached that has completed charging (expended) to the printer.



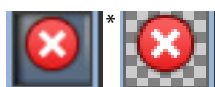
: A new chip unit has been reserved.
If a chip unit is removed in this state, the reservation is canceled and the icon starts blinking. A chip unit that has been removed can be used because it has not charged the printer yet.



: A chip unit that is not new (old) that may have been partially used has been reserved.
We recommend preparing a new chip unit (ink pack) because information about the available amount of ink is unclear. The same display pattern as for the above icon is displayed unless the information about the available amount of ink is unclear.



: The slider's lock lever has been raised up. Because of this, the printer cannot be charged from the reserved chip unit. Lower the lock lever. If the charge has expended, it flashes.



* : An error occurred. Check the message on the screen, and clear the error.



: Chip unit is nearing end of service life. When the ink level is 70 mm or less from the base of the ink tank, replace the chip unit and refill from one ink pack. As it gets closer to the time to replace the chip unit, it will begin to flash.



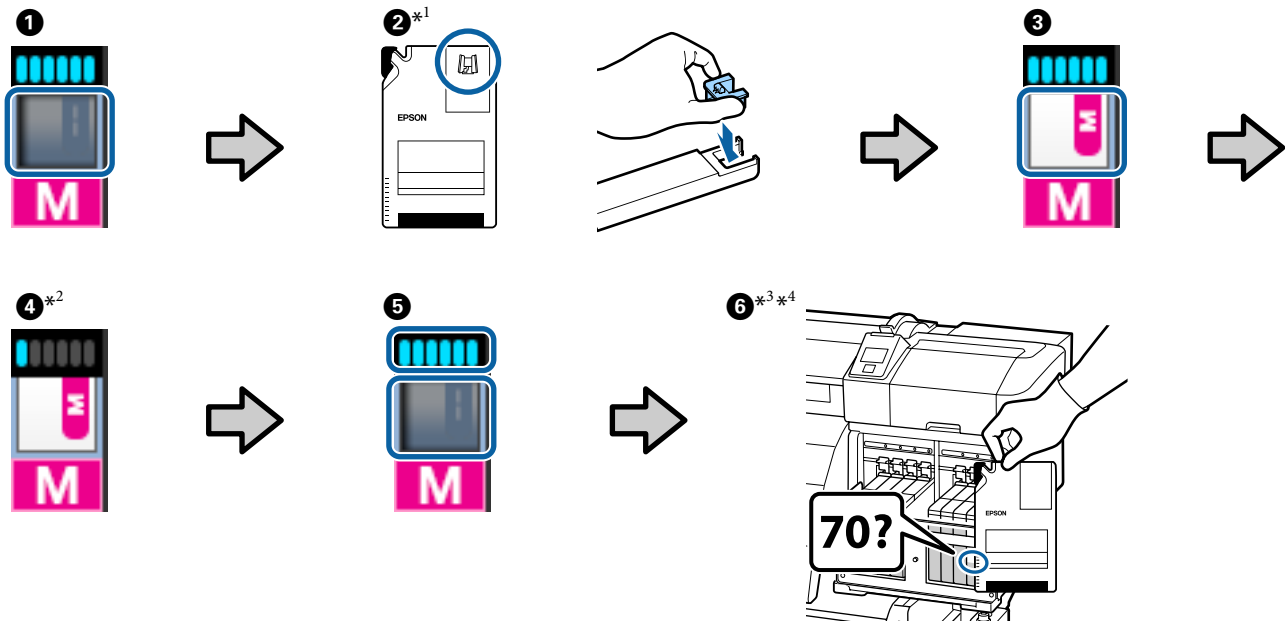
* : The chip unit could not be recognized or reservation failed. If the charge fails, it flashes. Check the on-screen message.

* If an error or warning appears indicating a chip unit, do not refill ink from the ink pack on which that chip unit was attached. This could lead to problems, such as mixing different colors of ink. Follow the instructions in the messages to clear the error or warning. Then, refill the ink from the ink pack on which that chip unit was attached.

Chip unit replacement by reservation and ink refills

This section explains the basic flow when using a chip unit that has been reserved. The method to use a chip unit without a reservation is the same as before the firmware update. When a message appears (or the charge has expended), check the ink level, then replace the chip unit and refill from one ink pack. Refer to the manual for details about the procedure to replace a chip unit and refill from one ink pack.


- 1 Chip unit reservation is available: The charge status is indicated in blue, and the chip unit status is gray
- 2 Replace with new chip unit
- 3 Chip unit is reserved on printer
- 4 Chip unit is reserved while the charge in the printer is being consumed
- 5 At the same time as the charge is expended, the reserved chip unit automatically charges the printer
- 6 Check the ink level. If the ink is 70 mm or less from the base of the ink tank, refill from one ink pack



*1 Do not open ink packs until it is time to refill an ink tank (refill from one ink pack when the ink level is 70 mm from the base of the ink tank).

*2 Refer to **Forced Charge** in “Added menu to the control panel” on the following page if the ink needs to be refilled before it is automatically charged (refill from one ink pack when the ink level is 70 mm from the base of the ink tank).

*3 When the ink level is more than 70 mm from the base of the tank, continue to use it until it is below 70 mm and then refill from the ink pack 2.


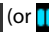




*4 Refer to **Extend Charge Timing** in “Added menu to the control panel” on the following page if you use the printer after automatic charging is done and see  on the screen when it is time to refill the ink (refilled from one ink pack when the ink level is 70 mm from the base of the ink tank).

Added menu to the control panel

The **Charge Setting** menu was added to the Printer Setup menu.

Depending on the operating environment and the operating status, the charge status display may not match the time to refill the ink (refilled from one ink pack when the ink level is 70 mm from the base of the ink tank). You may be able to clear the mismatch by doing this setting.

If the following settings do not clear the mismatch, continue to use the ink, without reserving the chip unit, until the mismatch is cleared.

Item	Parameter	Explanation
Charge Setting		
Extend Charge Timing		Turn this setting On if the display is  (or  ) after an automatic charge is done and you are continuing to use the ink until it is 70 mm from the base of the ink tank.
Select Ink Color to Set	On	However, if you leave this setting On while you continue to use the printer, you may need to do Forced Charge . Turn this setting Off if you see  or  when it is time to refill the ink. Set this setting if the consumption of the ink gets ahead of the consumption of the charge in the printer.
	Off*	
Forced Charge		This can only be executed if the charge status is  when it is time to refill the ink (refilled from one ink pack when the ink is 70 mm from the base of the ink tank) and the automatic charge has not been done yet. If you select a color to set after reserving a chip unit and then executing this, the current charge is canceled and the printer is charged from the reserved chip unit. The canceled charge cannot be recovered, such as for recharging.
Select Ink Color to Set	-	Set this setting if the consumption of the charge in the printer gets ahead of the consumption of the ink.

* indicates the default setting.

Set **Extend Charge Timing** if the status is as shown in the following figure after an automatic charge is done and you are continuing to use the ink until it is 70 mm from the base of the ink tank.

