

WF-100

EPSON
 EXCEED YOUR VISION

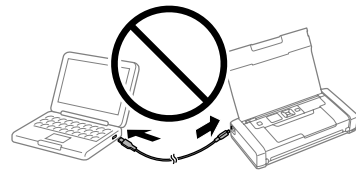
Start Here



412783100

 © 2014 Seiko Epson Corporation.
 All rights reserved.
 Printed in XXXXXX


Do not open the ink cartridge package until you are ready to install it in the printer. The cartridge is vacuum packed to maintain its reliability.

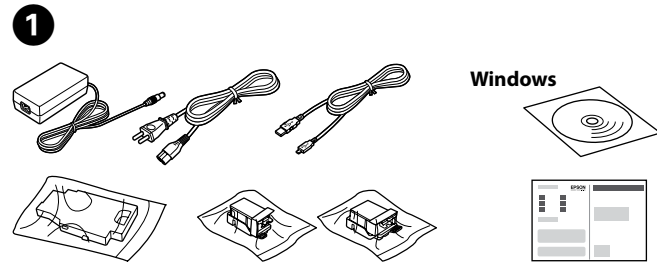


Do not connect a micro USB cable unless instructed to do so.



Important; must be observed to avoid damage to your equipment.

1

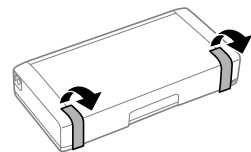


Contents may vary by location.



Maintenance box: If the maintenance box full error appears, replace it. See the "Replacing Maintenance Box" section.

2



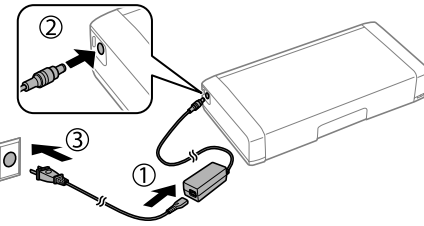
Remove all protective materials.



For the initial setup, make sure you use the ink cartridges that came with this printer. These cartridges cannot be saved for later use. The initial ink cartridges will be partly used to charge the print head. These cartridges may print fewer pages compared to subsequent ink cartridges.

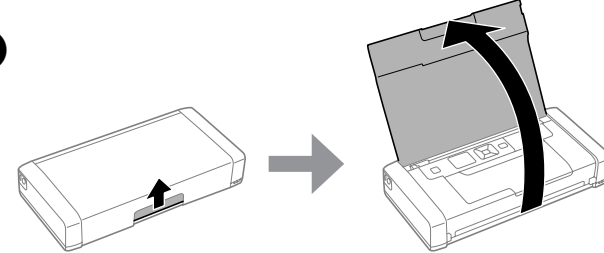
2

1



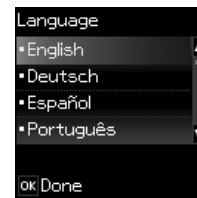
Connect the power cord and plug in.

2



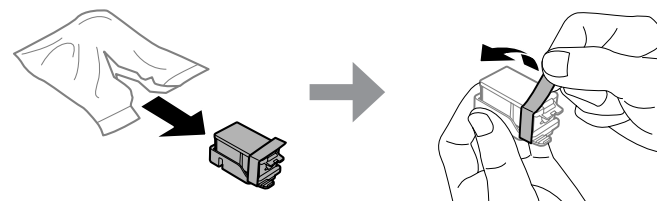
Turn on.

3



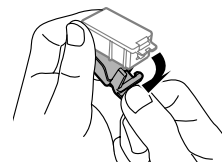
Select a language.

4



Remove from the package and then remove only the yellow tape.

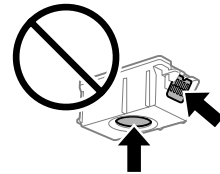
5



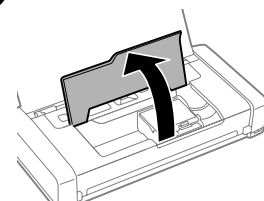
Remove the caps and dispose of them correctly.



Do not touch the sections.

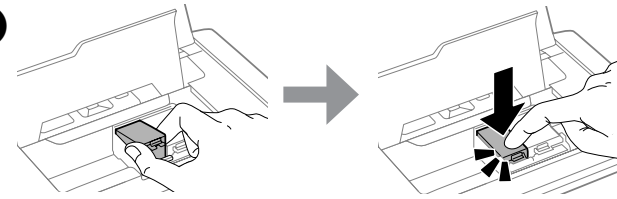


6



Open.

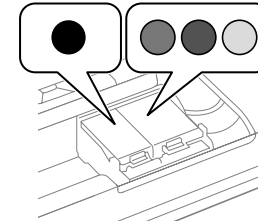
7



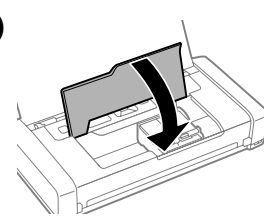
Insert diagonally and push.



Make sure you insert the black cartridge into the left holder, and the color cartridge into the right holder.

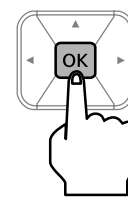


8



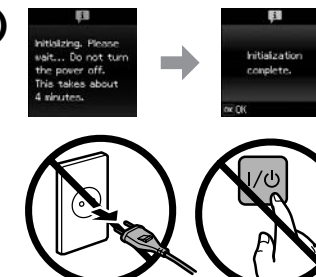
Close.

9



Press OK. Charging ink is started.

10



Charging ink takes about 4 minutes. Wait until a completion message is displayed.

11



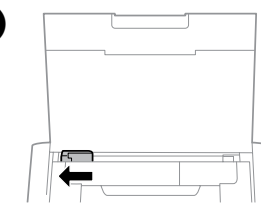
Check the home screen on the LCD display.



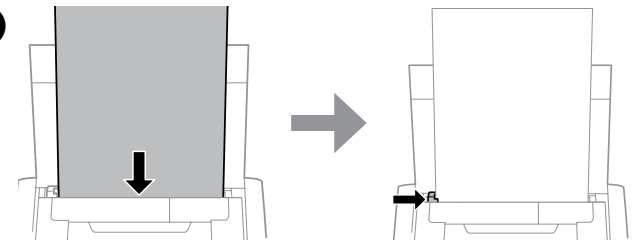
The capacity level of the maintenance box decreases. The initial maintenance box is partly filled after charging the print head.

3

1

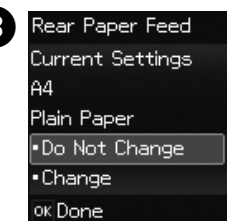


2



Load A4 size paper for the test print.

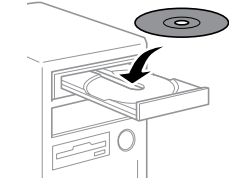
3



Check the paper size and type.

4

Windows



If the Firewall alert appears, allow access for Epson applications.

Windows (No CD/DVD drive) Mac OS X



<http://epson.sn>

Visit the website to install the software and configure network settings.

iOS / Android



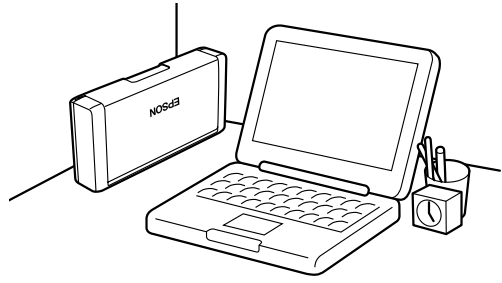
<http://epson.sn>

Visit the website to install the Epson iPrint application and configure network settings.

Storing the Printer



When the printer is not in use, you can place it with the sliver clip face up in a cool dry place.



Questions?



You can open the *User's Guide* (PDF) and *Network Guide* (PDF) from the shortcut icon, or download the latest versions from the following website.

➔ <http://support.epson.net/>

Tips for Smart Use

You can bring the printer to the various places and print using the special functions. How to utilize the mobile printer, refer to "Tips for Smart Use" section in *User's Guide*.



Epson Connect

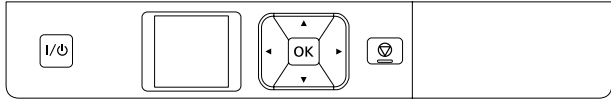


Using your mobile device, you can print from any location worldwide to your Epson Connect compatible product. Visit the website for more information.

➔ <https://www.epsonconnect.com/>

Printer Basics

Guide to Control Panel

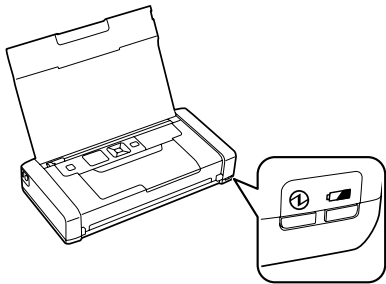


- Turns the product on or off.
- Press , , , to select menus. Press **OK** to confirm your selection or run the selected feature.
- Cancels the current operation or returns to the previous screen.



- Displays the amount of battery remaining.
- Indicates that the battery is too hot or too cold. Select **Menu** > **Battery** to check the status.
- Displays the approximate service life of the maintenance box.
- Displays the approximate levels of the ink cartridges.
- Indicates the network status. See *User's Guide* for details.
-
- Indicates the print density status when you change the setting.
- Indicates the color management status when you change the setting.

Lights



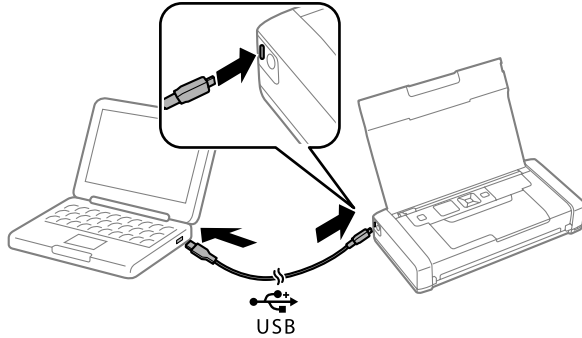
- Turn on when the power is on. Flashes when the error occurs.
- Turn on when the battery is charging.

Travelling with Printer

Connecting

You can easily connect the printer to your computer or other device using the following methods.

■USB cable (PC)



Connect with a micro USB cable.

■Wi-Fi Direct



For details on network connection settings, see *Network Guide* (PDF).

1



Select **Wi-Fi Setup** > **Wi-Fi Direct Setup** > **Connection Setup**.

2



Press **OK** and follow the on-screen instructions.

3



Check the SSID and password on the LCD screen.

4

On your device, select the SSID and enter the password.

Printing- Windows

If you have already installed Epson Windows printer driver on your PC, you can use it to print. If you have not, or if you do not have access to the product CD or a network, you can install a basic driver from the printer from the printer using a USB cable and then print. Follow the steps below.

■Installing the Epson Basic Driver

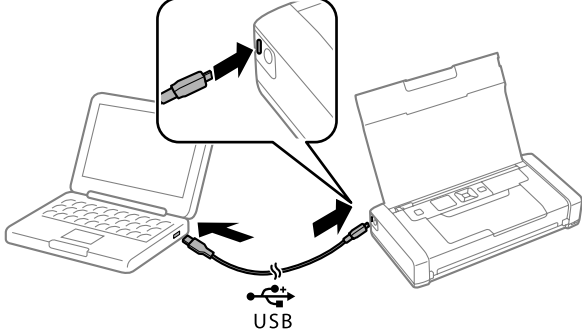
1 Disconnect the printer from the computer.

2



Select **Menu** > **WF-100 Basic Driver** on the control panel. Press the **OK** button to start installing.

3



When the on-screen instructions are displayed, connect the printer and the computer with a micro USB cable, and then press the **OK** button on the control panel.

4

In **Computer** or **My Computer** on the computer, double-click **EPSON** > **SETUP**.

5

Follow the on-screen instructions to complete the installation.

■Printing - Epson Basic Driver

1

Load paper in the printer.

2

Open the file you want to print.

3

Access the printer driver window.

4

Select the orientation you set in the application as the **Orientation** on the **Layout** tab.

5

Make the following settings on the **Paper/Quality** tab.

- ☐ Media: Select the type of paper you loaded.
- ☐ Color: Select to print in full color or monochrome.

6

Click **Advanced**, make the following setting, and then click **OK**.
Paper Size: Select the paper size you set in the application.

7

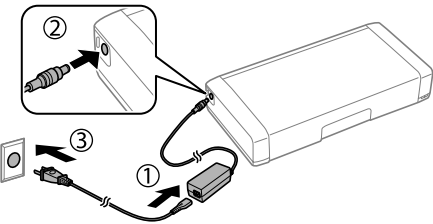
Click **OK**.

8

Click **Print**.

Battery Charging

■Using AC adapter



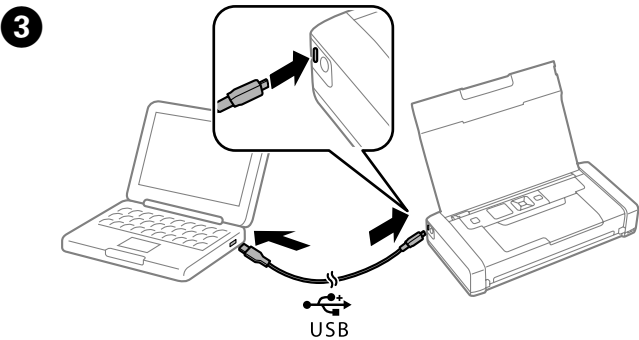
Connect the power cord to the AC adapter, connect the AC adapter to the printer, and then plug in the power cord.

The battery charging light turns on when the battery is charging, and turns off when the battery charge is finished.

■Using PC

1 Make sure that the computer is on. Wake the computer if it is in hibernate or sleep mode.

2 Press the I/⏻ button to turn on the printer.



Connect the printer to the computer using a micro USB cable.

4 Press the I/⏻ button to turn off the printer.

If battery charging does not start, select **Menu > Battery > Battery Settings** on the control panel, enable **USB Power Supply via PC**, and then try again.

You can charge the battery when the printer is in sleep mode even if you do not turn off the printer.

Error Indicators

A code is displayed on the LCD screen if there is an error or information. Use the following table to solve the problem.

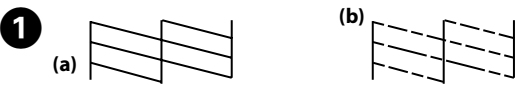
E-01	Remove any paper or protective material in the printer. If the error message is still displayed even after turning off and then on again, contact Epson support.
E-12	Turn the power off. Refer to the steps in "Replacing Maintenance Box" section to replace the maintenance box.
E-13	Turn the power off, and then install the maintenance box.
E-14	Turn the power off, and then install the maintenance box again. If the message continues to be displayed even after reinstalling the maintenance box, replace it with a new maintenance box.
E-21	Battery error. Contact Epson support.
E-22	Use the battery at a temperature of 10 to 35 °C.
E-23	
E-24	Charge the battery or connect the AC adapter to the printer.
W-01	Remove the paper from the printer and press the OK button. See the "Clearing Paper Jam" section.
W-02	
W-11	Contact Epson or an authorised Epson service provider to replace the ink pad. Press the OK button to resume printing.
W-12	Press down each of the ink cartridges gently. Make sure they click into place.
I - 81	The print speed may be slower when the printer is in battery mode. Connect the AC adapter to the printer when you do not want to change the print speed.
Recovery mode	The firmware update has failed. Follow the steps below to try to update the firmware again. 1. Connect the printer with the AC adapter. 2. Connect the computer and the printer with a USB cable. (During recovery mode, you cannot update the firmware over a network connection.) 3. Visit your local Epson website for further instructions.

See the online *User's Guide* for more information on what to do when an other error is displayed.

Maintenance

Print Quality Help

■If you see missing segments or broken lines in your printouts, try the following solutions.



Print a nozzle check pattern to check if the print head nozzles are clogged. Select **Menu > Maintenance > Nozzle Check**. If you notice any missing segments or broken lines as shown in (b), go to step 2.

2 Run the print head cleaning. Select **Menu > Maintenance > Head Cleaning**. The cleaning uses some ink from all cartridges, so run the cleaning only if print quality declines on your prints.

■You can adjust the density and color on the printer's control panel.

- Select **Menu > Plain Paper Density Setting** on the control panel, and then adjust the density.
- Select **Menu > Color Adjustment** on the control panel, and then adjust the color.

Ink Cartridge Code

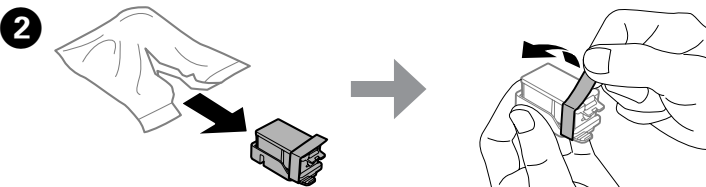
Black / Color	215
---------------	-----

Replacing Ink Cartridges

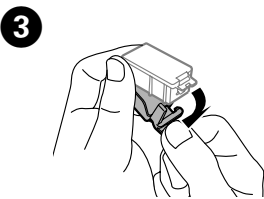
1 Prepare a new ink cartridge.

When prompted to replace ink cartridges Check which ink cartridge needs to be replaced, and then press the **OK** button. Select **Replace now**, and then press the **OK** button.

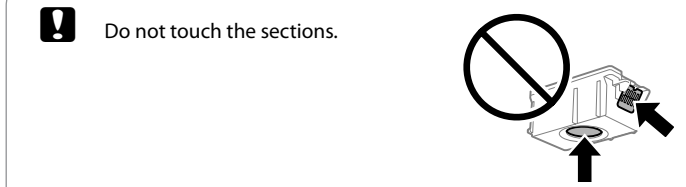
When replacing ink cartridges before they are expended From the home screen, select **Menu > Maintenance > Ink Cartridge Replacement**, and then press the **OK** button.



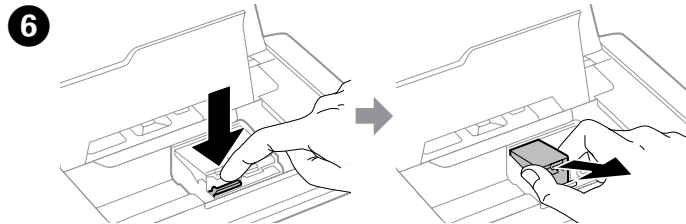
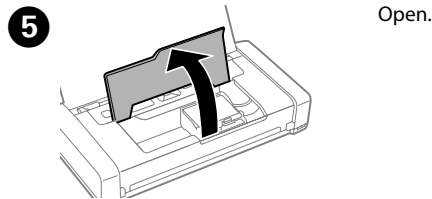
Remove from the package and then remove only the yellow tape.



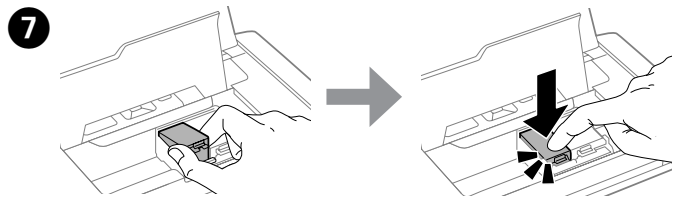
Remove the cap.



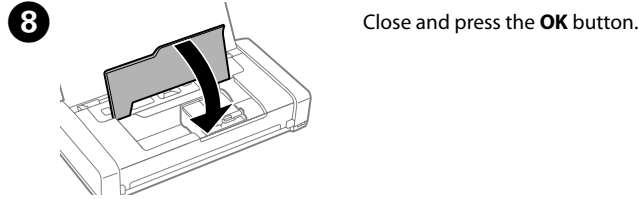
4 Press the **OK** button.



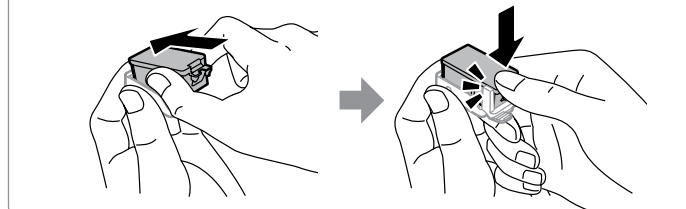
Push the lever to unlock the ink cartridge, and then pull out the cartridge diagonally.



Insert the new ink cartridge diagonally into the cartridge holder and gently push it down until it clicks into place.



! If you remove the cartridge from the printer for later use or to dispose of it, make sure you put the cap back on the cartridge's ink supply port to prevent ink from drying out or to prevent surrounding areas from getting smeared by ink.

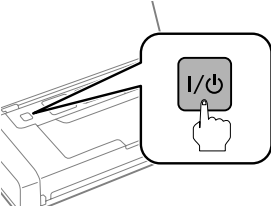


Maintenance Box Code T2950

Replacing Maintenance Box

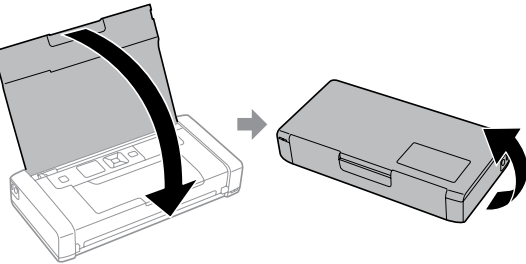
- 1

Remove the new maintenance box from its package.
- 2

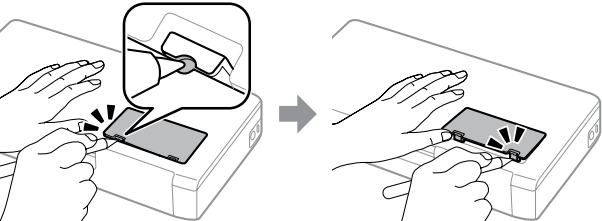


Turn off the printer.
- 3

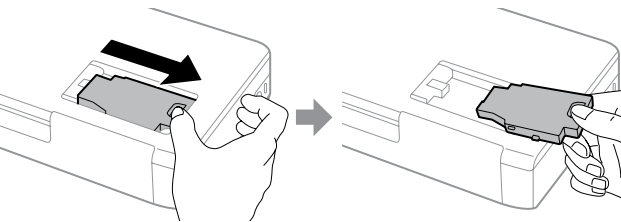
Disconnect all cables such as the AC cable and micro USB cable.
- 4



Close the printer cover, and then turn the printer over.
- 5



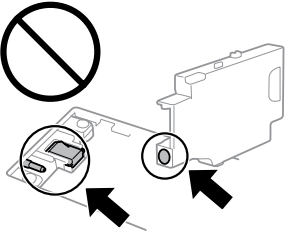
Take off the cover.
- 6



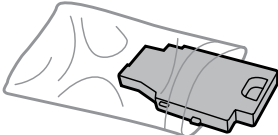
Slide the maintenance box as shown in the illustration, and then remove the box.

!

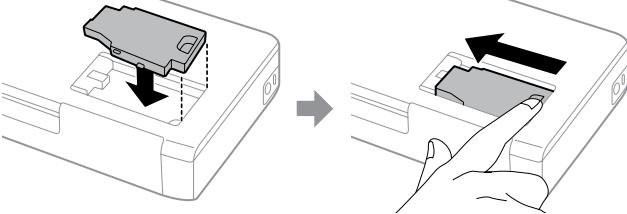
Do not touch the sections shown in the illustration.



- 7



Put the used maintenance box in the transparent bag that came with the new maintenance box and seal the bag shut.
- 8

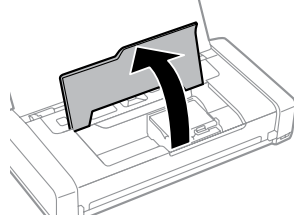


Place the new maintenance box straight down, and then slide it to install it.
- 9

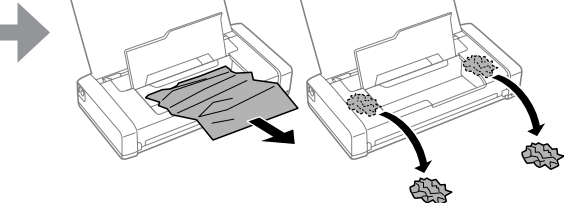
Reattach the maintenance box cover.

Clearing Paper Jam

- 1



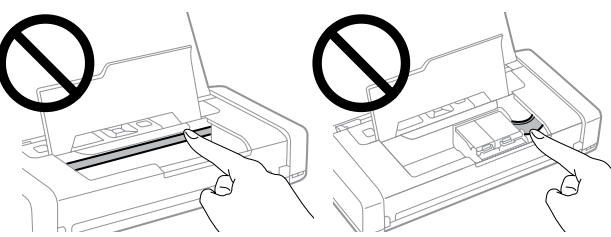
Open the inner cover and remove the jammed paper.
- 2



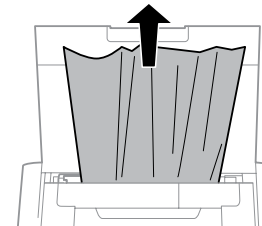
If the jammed paper remains inside the rear paper feed, carefully remove the paper.

!

Do not touch the white flat cable or translucent part inside the printer. Doing so may cause a malfunction.





- 2

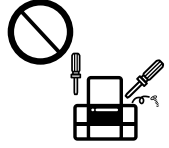



If the jammed paper remains inside the rear paper feed, carefully remove the paper.


Safety Instructions


- 


Use only the AC adapter supplied with the product and do not use the adapter with any other equipment. Use of any other adapter with this product or the use of the supplied AC adapter with other equipment may result in fire or electric shock.
- 


Be sure your AC power cord meets the relevant local safety standard.
- 


Never disassemble, modify, or attempt to repair the AC adapter, plug, printer unit or options by yourself, except as specifically explained in the product's guides.
- 

Unplug the product and the AC adapter, and refer servicing to qualified service personnel under the following conditions:
The AC adapter or plug is damaged; liquid has entered the product or the AC adapter; the product or the AC adapter has been dropped or the casing damaged; the product or the AC adapter does not operate normally or exhibits a distinct change in performance. Do not adjust controls that are not covered by the operating instructions.
- 


Place the product near a wall outlet where the plug can be easily unplugged.
- 

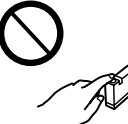
Do not place or store the product or the AC adapter outdoors, near excessive dirt or dust, water, heat sources, or in locations subject to shocks, vibrations, high temperature or humidity.
- 


Take care not to spill liquid on the product and not to handle the product with wet hands.
- 

Keep this product at least 22 cm away from cardiac pacemakers. Radio waves from this product may adversely affect the operation of cardiac pacemakers.
- 

If the LCD screen is damaged, contact your dealer. If the liquid crystal solution gets on your hands, wash them thoroughly with soap and water. If the liquid crystal solution gets into your eyes, flush them immediately with water. If discomfort or vision problems remain after a thorough flushing, see a doctor immediately.

- 

Keep ink cartridges out of the reach of children.
- 

Be careful when you handle used ink cartridges, as there may be some ink around the ink supply port.
If ink gets on your skin, wash the area thoroughly with soap and water.
If ink gets into your eyes, flush them immediately with water.
- 

If discomfort or vision problems continue after a thorough flushing, see a doctor immediately.
If ink gets into your mouth, spit it out immediately and see a doctor right away.

Instructions for the Battery

- Do not leave the printer in a vehicle, and keep it out of direct sunlight and away from heat sources. Otherwise, the printer may be deformed or ink may leak.
- Do not place the printer in a microwave oven or a high-pressure container. Otherwise, the battery could become hot, emit smoke, rupture, or catch fire.
- If the liquid leaks from the printer (or the printer gives out bad smell), let the printer leave from flammable objects immediately. Unless do that, the electrolyte leaked from battery will catch fire and it will cause the smoke, flame or rupture of it.
- Do not drop or throw the printer or subject it to strong shocks. Otherwise, the battery could leak or the protection circuit in the battery could be damaged. As a result, the battery could become hot, emit smoke, rupture, or catch fire.
- Do not use or leave the printer in a hot location(more than 80°C), such as near a fire or a heater. Otherwise, the plastic separator could melt and the individual cells could short-circuit. As a result, the battery could become hot, emit smoke, rupture, or catch fire.
- Do not use the printer if it is leaking or damaged in any way. Otherwise, the battery could become hot, emit smoke, rupture, or catch fire.
- Do not leave the printer in a vehicle to prevent the battery from overheating.

Instructions for the AC adapter

- The AC adapter cord should be placed to avoid abrasions, cuts, fraying, crimping, and kinking. Do not place objects on top of the cord and do not allow the AC adapter or the cord to be stepped on or run over. Be particularly careful to keep the cord straight at the end.
- Use only the type of power source indicated on the AC adapter's label, and always supply power directly from a standard domestic electrical outlet with the AC adapter that meets the relevant local safety standards.
- If you are not going to use the product for a long period, be sure to unplug the AC adapter from the electrical outlet.
- Windows® is a registered trademark of the Microsoft Corporation.
Mac OS is a trademark of Apple Inc., registered in the U.S. and other countries.
Android™ is a registered trademark of Google Inc.
- The contents of this manual and the specifications of this product are subject to change without notice.

