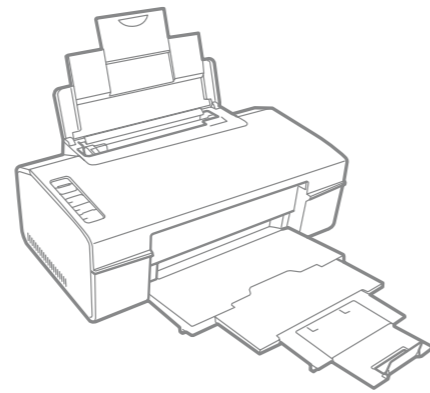


EN Start Here

ID Mulai di sini



Copyright © 2008 Seiko Epson Corporation. All rights reserved.
Printed in XXXXXX

No. Reg: 03/DJPDN/MG/III/2001
Tgl. 13 Maret 2001

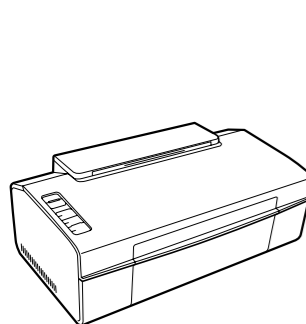


Unpacking
Buka Kemasan

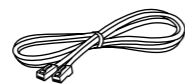
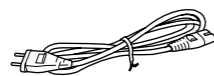
1

Contents may vary by location.
Isi tergantung lokasi.

Do not open the ink cartridge package until you are ready to install it in the printer. The cartridge is vacuum packed to maintain its reliability.
Jangan buka kemasan kartrid tinta sampai Anda siap memasangnya pada printer. Kartrid dikemas kedap udara untuk menjaga mutunya.



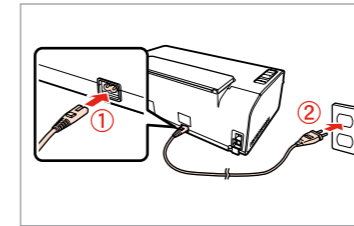
Remove all protective materials.
Lepas semua pelindung.



Turning On
Menyalakan

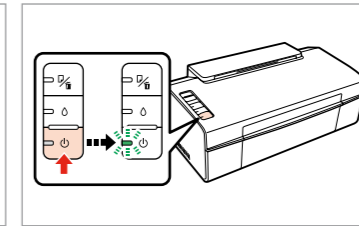
2

1



Connect and plug in.
Hubungkan dan colokkan.

2

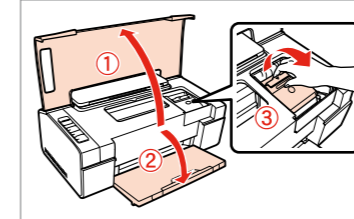


Turn on.
Nyalakan.

Installing the Ink Cartridges
Memasang Kartrid Tinta

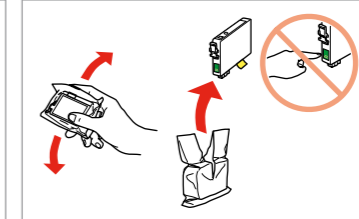
3

1



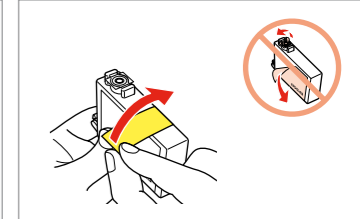
Open.
Buka.

2



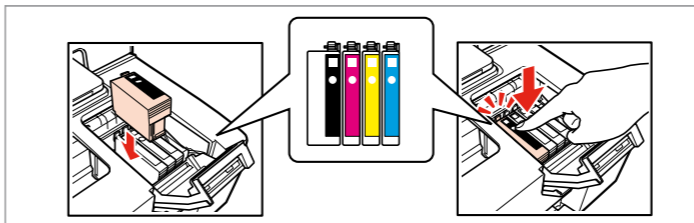
Shake and unpack.
Kocok dan buka.

3



Remove yellow tape.
Lepas pita kuning.

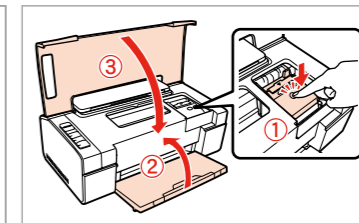
4



Install.
Pasang.

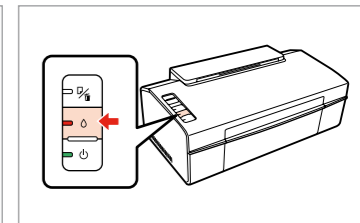
Press (click).
Tekan (klik).

5



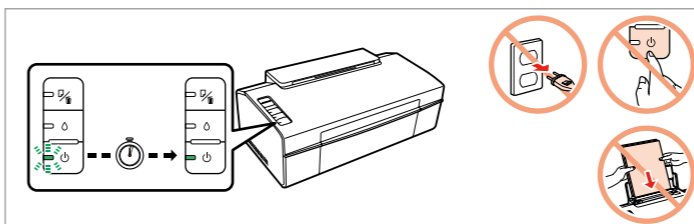
Close.
Tutup.

6



Press.
Tekan.

7

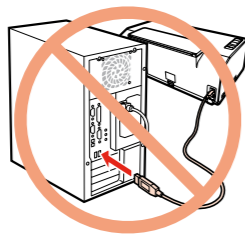


Wait about 4 min.
Tunggu sekitar 4 mnt.

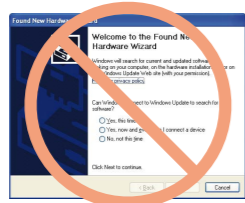
The ink cartridges first installed in your printer will be partly used to charge the print head. These cartridges print fewer pages compared to subsequent ink cartridges. Kartrid tinta yang pertama dipasang pada printer Anda sebagian akan digunakan untuk mengisi kepala cetak. Kartrid ini akan mencetak lebih sedikit halaman daripada kartrid tinta berikutnya.

Installing the Software
Menginstal Perangkat Lunak

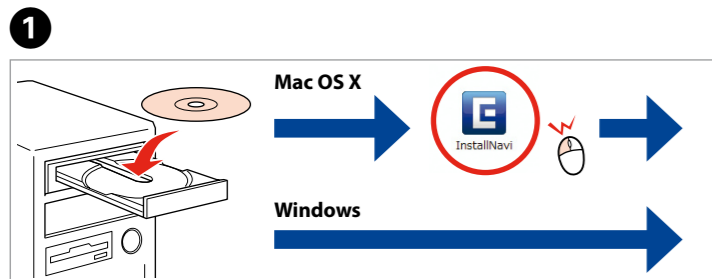
4



Do not connect the USB cable until you are instructed to do so.
Jangan hubungkan kabel USB sampai Anda diminta untuk melakukannya.

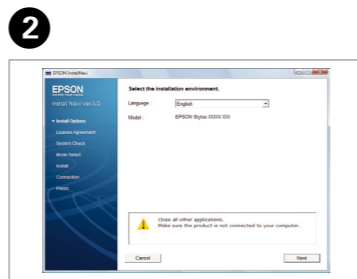


If this screen appears, click **Cancel**.
Jika layar ini muncul, klik **Cancel (Batal)**.

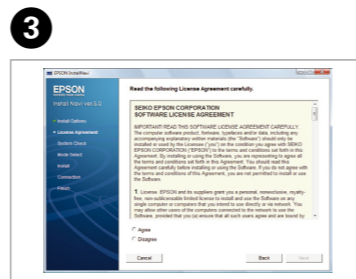


Insert.
Masukkan.

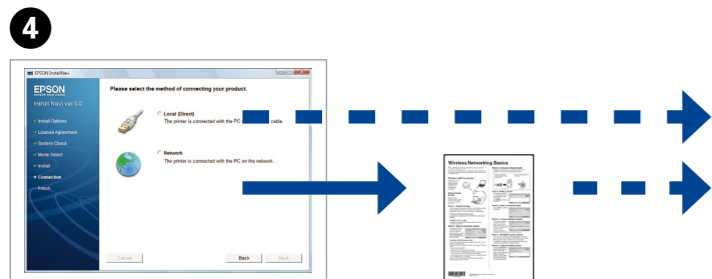
Windows: No installation screen? →
Windows: Tidak ada layar instalasi? →



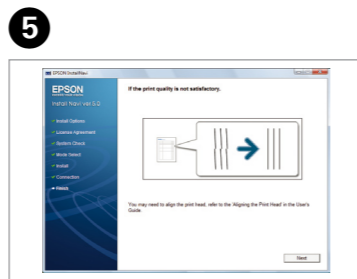
Select a language.
Pilih bahasa.



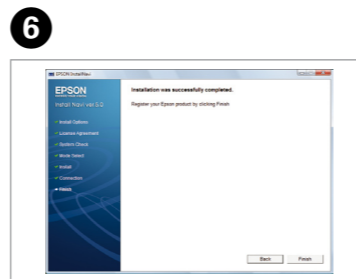
Follow the instructions.
Ikuti petunjuk.



Select connection type and follow instructions.
Pilih jenis koneksi dan ikuti petunjuknya.



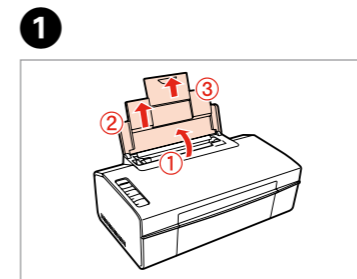
Check.
Periksa.



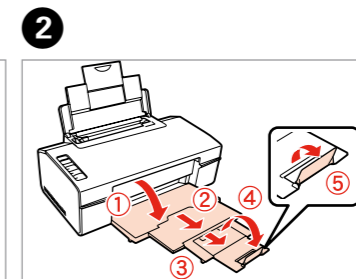
Installation complete.
Instalasi selesai.

Loading Paper
Memasukkan Kertas

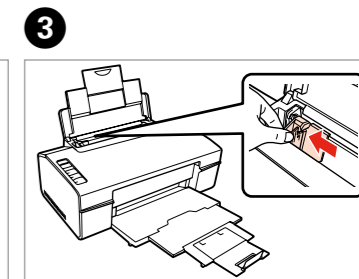
5



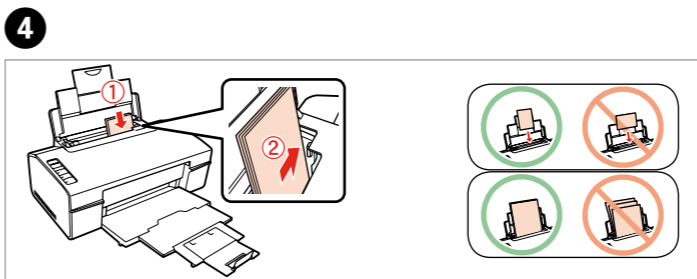
Open.
Buka.



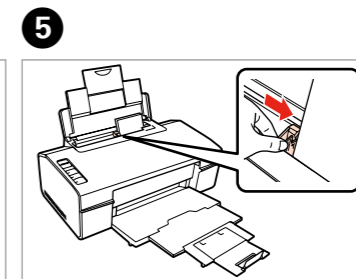
Open and pull out.
Buka dan tarik keluar.



Pinch and slide.
Tekan dan geser.

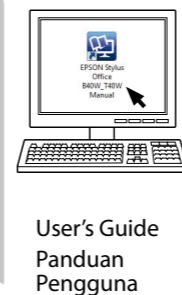


Load the paper with the printable side up.
Masukkan kertas dengan sisi cetak menghadap atas.



Fit.
Rapikan.

Getting More Information
Memperoleh Informasi Tambahan



Printing/Networking/Troubleshooting and maintenance
Mencetak/Jaringan/Pemecahan Masalah dan pemeliharaan