

User's Guide

Copyright

No part of this publication may be reproduced, stored in a retrieval system, or transmitted in any form or by any means, electronic, mechanical, photocopying, recording, or otherwise, without the prior written permission of Seiko Epson Corporation. No patent liability is assumed with respect to the use of the information contained herein. Neither is any liability assumed for damages resulting from the use of the information herein. The information contained herein is designed only for use with this Epson product. Epson is not responsible for any use of this information as applied to other products.

Neither Seiko Epson Corporation nor its affiliates shall be liable to the purchaser of this product or third parties for damages, losses, costs, or expenses incurred by the purchaser or third parties as a result of accident, misuse, or abuse of this product or unauthorized modifications, repairs, or alterations to this product, or (excluding the U.S.) failure to strictly comply with Seiko Epson Corporation's operating and maintenance instructions.

Seiko Epson Corporation and its affiliates shall not be liable for any damages or problems arising from the use of any options or any consumable products other than those designated as Original Epson Products or Epson Approved Products by Seiko Epson Corporation.

Seiko Epson Corporation shall not be held liable for any damage resulting from electromagnetic interference that occurs from the use of any interface cables other than those designated as Epson Approved Products by Seiko Epson Corporation.

© 2015 Seiko Epson Corporation. All rights reserved.

The contents of this manual and the specifications of this product are subject to change without notice.

Trademarks

Trademarks

- ❑ EPSON® is a registered trademark, and EPSON EXCEED YOUR VISION or EXCEED YOUR VISION is a trademark of Seiko Epson Corporation.
- ❑ PRINT Image Matching™ and the PRINT Image Matching logo are trademarks of Seiko Epson Corporation. Copyright © 2001 Seiko Epson Corporation. All rights reserved.
- ❑ SDXC Logo is a trademark of SD-3C, LLC.



- ❑ PictBridge is a trademark.



- ❑ Microsoft®, Windows®, and Windows Vista® are registered trademarks of Microsoft Corporation.
- ❑ Apple, Macintosh, Mac OS, OS X, Bonjour, Safari, iPad, iPhone, iPod touch, and iTunes are trademarks of Apple Inc., registered in the U.S. and other countries. AirPrint and the AirPrint logo are trademarks of Apple Inc.
- ❑ Google Cloud Print™, Chrome™, Chrome OS™, and Android™ are trademarks of Google Inc.
- ❑ Adobe, Adobe Reader, Acrobat, and Photoshop are trademarks of Adobe systems Incorporated, which may be registered in certain jurisdictions.
- ❑ General Notice: Other product names used herein are for identification purposes only and may be trademarks of their respective owners. Epson disclaims any and all rights in those marks.

Contents

Copyright

Trademarks

About This Manual

Introduction to the Manuals.	7
Marks and Symbols.	7
Definitions of Terms Used in this Manual.	8
Descriptions Used in this Manual.	8
Operating System References.	8

Important Instructions

Safety Instructions.	9
Printer Advisories and Warnings.	10
Advisories and Warnings for Setting Up/ Using the Printer.	10
Advisories and Warnings for Using the Printer with a Wireless Connection.	11

Printing from a Computer

Printing Basics - Windows.	12
Printing Basics - Mac OS X.	13
Printing on 2-Sides (for Windows only).	16
Printing Several Pages on One Sheet.	17
Printing Several Pages on One Sheet - Windows.	17
Printing Several Pages on One Sheet - Mac OS X.	17
Printing to Fit the Paper Size.	18
Printing to Fit the Paper Size - Windows.	18
Printing to Fit the Paper Size - Mac OS X.	19
Printing One Image on Multiple Sheets to Create a Poster (for Windows Only).	19
Making Posters Using Overlapping Alignment Marks.	20
Printing Using Advanced Features.	25
Adding a Printing Preset to Print Easily.	25
Printing a Reduced or Enlarged Document.	26
Adjusting the Print Color.	26
Printing a Watermark (for Windows Only).	27
Printing Photos Using Epson Easy Photo Print.	27

Canceling Printing

Canceling Printing - Windows.	28
---------------------------------------	----

Canceling Printing - Mac OS X.	28
--	----

Checking the Ink Levels

Checking the Ink Levels - Windows.	29
Checking the Ink Levels - Mac OS X.	29

Checking and Cleaning the Print Head

Checking and Cleaning the Print Head - Windows.	30
Checking and Cleaning the Print Head - Mac OS X.	30

Network Service and Software Information

Epson Connect Service.	31
Web Config.	31
Running Web Config on a Web Browser.	32
Running Web Config on Windows.	32
Running Web Config on Mac OS X.	32
Windows Printer Driver.	33
Guide to Windows Printer Driver.	33
Making Operation Settings for the Windows Printer Driver.	36
Mac OS X Printer Driver.	36
Guide to Mac OS X Printer Driver.	37
Making Operation Settings for the Mac OS X Printer Driver.	38
Epson Easy Photo Print.	39
EPSON Software Updater.	39
Uninstalling Applications.	39
Uninstalling Applications - Windows.	39
Uninstalling Applications - Mac OS X.	40
Installing Applications.	41
Updating Applications and Firmware.	41

Connecting the Printer to the Smart Device or Computer

Connection Types Between the Printer and a Smart Device.	42
Connection Type - Wi-Fi.	42
Connection Type - Wi-Fi Direct (Direct Connection).	42
Connection Settings Between the Printer and a Smart Device.	43

Contents

Procedure Outline for Connecting through an Access Point.	43
Making Wi-Fi Network Settings from the Printer's Control Panel.	44
Connecting the Smart Device to the Same Network as the Printer.	56
Procedure Outline for Wi-Fi Direct Connection (Simple AP Mode).	56
Connecting the Smart Device to the Printer Directly by Wi-Fi.	57
Connecting the Smart Device to the Printer Directly by Wi-Fi Direct (for Android Only).	59
Connecting the Smart Device and Printer by Wi-Fi Direct Mode (for Android Only).	60
Checking the Connection Using Epson iPrint.	62
Changing the Connection Method Between the Printer and the Smart Device.	64
Additional Connections for a Smart Device.	64
Checking the Printer's Network Status.	65
Checking the Network Status Using Network Icon.	65
Checking the Network Status from the Control Panel.	65
Checking the Network Status by Printing Network Connection Report.	66
Messages and Solutions on the Network Connection Report.	66
Connecting the Printer and a Computer.	66
Connecting the Printer to the Computer.	66
Changing a Connection Method Between the Printer and a Computer.	67
Adding Computers.	72

Disconnecting or Initializing the Network

Disabling Wi-Fi from the Printer's Control Panel.	75
Disconnecting Wi-Fi Direct from the Printer's Control Panel.	75
Initializing the Network Settings from the Printer's Control Panel.	75

Solving Problems

Checking the Printer Status.	76
Checking the Printer Status - Windows.	76
Checking Printer Status - Mac OS X.	76
Paper Does Not Feed Correctly.	76
Paper Jams.	77
Paper Feeds at a Slant.	77
Several Sheets of Paper are Fed at a Time.	77

No Paper Feeds.	77
Cannot Print from a Computer.	77
Cannot Make Network Connection Settings.	78
Cannot Connect to the Network Even Though the Network Connection Report Does Not Show Any Problems.	78
Checking the SSID Connected to the Printer.	80
Checking the SSID for the Computer.	80
Suddenly the Printer Cannot Print over a Network Connection.	81
Suddenly the Printer Cannot Print Using a USB Connection.	81
Cannot Use AirPrint.	81
Printout Problems.	82
Nothing or a Very Faint Image is Printed.	82
Printouts Become Faint, Banding, or Unexpected Colors Appear.	82
Blurry Prints, Vertical Banding, or Misalignment.	82
Mosaic-Like Patterns in the Prints.	83
Print Photo Quality is Poor.	83
Printed Photos are Sticky.	83
Images or Photos are Printed in Unexpected Colors.	83
The Position, Size, or Margins of the Printout Are Incorrect.	83
Cannot Print Without Margins.	83
Edges of the Image are Cropped During Borderless Printing.	84
Paper Is Smearred or Scuffed.	84
Printed Characters Are Incorrect or Garbled.	84
The Printed Image Is Inverted.	84
Cannot Clear the Printout Problem After Trying All Solutions.	85
Other Printing Problems.	85
Printing Is Too Slow.	85
Printing Slows Down Dramatically During Continuous Printing.	85
Cannot Print Microsoft Word Files (.doc) Correctly.	85
Cannot Cancel Printing from a Computer Running Mac OS X v10.6.8.	86
Other Problems.	86
Slight Electric Shock when Touching the Printer.	86
Application Is Blocked by a Firewall (for Windows Only).	86

Appendix

Technical Specifications.	87
-----------------------------------	----

Contents

Printer Specifications.	87
Interface Specifications.	88
Wi-Fi Specifications.	88
Security Protocol.	88
Supported Third Party Services.	88
External Storage Device Specifications.	89
Dimensions.	90
Electrical Specifications.	90
Environmental Specifications.	91
System Requirements.	92
Regulatory Information.	92
Standards and Approvals for U.S. Model.	92
Restrictions on Copying.	92
Accessing a Memory Card From a Computer.	93
Where to Get Help.	94
Technical Support Web Site.	94
Contacting Epson Support.	94

About This Manual

Introduction to the Manuals

The following manuals are supplied with your Epson printer. As well as the manuals, check the various types of help information available from the printer itself or from the Epson software applications.

Start Here (paper manual)

Provides you with information on setting up the printer.

Operation Guide (paper manual)

Provides instructions on using the printer, replacing ink cartridges, maintenance, and solving problems.

User's Guide (digital manual)

This manual. Provides information on important instructions, printer specifications, printing from a computer, network settings, and solving problems when using the printer on a network.

You can obtain the latest versions of the above manuals with the following methods.

Paper manual

Visit the Epson worldwide support website at <http://support.epson.net/>.

Digital manual

Start EPSON Software Updater on your computer. EPSON Software Updater checks for available updates of Epson software applications and the digital manuals, and allows you to download the latest ones.

Related Information

➔ [“EPSON Software Updater” on page 39](#)

Marks and Symbols



Caution:

Instructions that must be followed carefully to avoid bodily injury.



Important:

Instructions that must be observed to avoid damage to your equipment.

Note:

Provides complementary and reference information.

➔ Related Information

Links to related sections.

Definitions of Terms Used in this Manual

The following terms are used in this manual.

Wi-Fi (Wireless LAN)

Wi-Fi (Wireless LAN) is a network that wirelessly communicates data. This term is the same as the term "Infrastructure mode" that communicates data through a relay point (for example, an access point) when connecting printers and computers.

Access Point

This relays communication between Wi-Fi devices. We also use the term "access point" for a wireless router that has a relay function. Many wireless routers have a LAN port to allow wired LAN connections. These can also be used as a hub for wired LAN connections.

Smart Device

This term is a generic term for Android devices and iOS devices that are capable of communicating with a printer. This term includes smart phones and tablets.

Password

This is an encryption key used in the security for the access point. A password may also be called a "WEP key", a "WPA passphrase", a "Pre-Shared Key", and so on according to the access point or security system being used. We use "Password" in this manual.

Descriptions Used in this Manual

- Screenshots of the printer driver are from Windows 8.1 or Mac OS X v10.10.x. The content displayed on the screens varies depending on the model and situation.

Operating System References

Windows

In this manual, terms such as "Windows 8.1", "Windows 8", "Windows 7", "Windows Vista", and "Windows XP" refer to the following operating systems. Additionally, "Windows" is used to refer to all versions.

- Microsoft® Windows® 8.1 operating system
- Microsoft® Windows® 8 operating system
- Microsoft® Windows® 7 operating system
- Microsoft® Windows Vista® operating system
- Microsoft® Windows® XP operating system
- Microsoft® Windows® XP Professional x64 Edition operating system

Mac OS X

In this manual, "Mac OS X v10.10.x" refers to OS X Yosemite, "Mac OS X v10.9.x" refers to OS X Mavericks, and "Mac OS X v10.8.x" refers to OS X Mountain Lion. Additionally, "Mac OS X" is used to refer to "Mac OS X v10.10.x", "Mac OS X v10.9.x", "Mac OS X v10.8.x", "Mac OS X v10.7.x", and "Mac OS X v10.6.8".

Important Instructions

Safety Instructions



Read and follow these instructions to ensure safe use of this printer. Make sure you keep this manual for future reference. Also, be sure to follow all warnings and instructions marked on the printer.

- Use only the AC adapter supplied with the printer and do not use the cord with any other equipment. Use of other cords with this printer or the use of the supplied AC adapter with other equipment may result in fire or electric shock.
- Use only the type of power source indicated on the AC adapter's label, and always supply power directly from a standard domestic electrical outlet with the AC power cord that meets the relevant local safety standards.
- Never disassemble, modify, or attempt to repair the AC adapter, power cord, printer, and options by yourself except as specifically explained in the printer's guides. Doing so may result in injury, electric shock, or fire.
- Unplug the printer and refer servicing to qualified service personnel under the following conditions:
The power cord or plug is damaged; liquid has entered the printer; the printer has been dropped or the casing damaged; the printer does not operate normally or exhibits a distinct change in performance. Do not adjust controls that are not covered by the operating instructions.
- Place AC adapter near a wall outlet where the plug can be easily unplugged.
- Do not place or store the printer and the AC adapter outdoors, near excessive dirt or dust, water, heat sources, or in locations subject to shocks, vibrations, high temperature or humidity.
- Do not leave the printer in direct sunlight, near heaters, inside cars or other locations that are subject to high temperatures. The printer may be deformed or ink may leak.
- Take care not to spill liquid on the printer and the AC adapter, and not to handle the printer and the AC adapter with wet hands.
- The AC adapter model A461H or A462E is designed for use with the printer with which it was included. Do not attempt to use it with other electronic devices unless specified.
- Keep the printer at least 22 cm away from cardiac pacemakers. Radio waves from this printer may adversely affect the operation of cardiac pacemakers.
- If the LCD screen is damaged, contact your dealer. If the liquid crystal solution gets on your hands, wash them thoroughly with soap and water. If the liquid crystal solution gets into your eyes, flush them immediately with water. If discomfort or vision problems remain after a thorough flushing, see a doctor immediately.
- If you use the printer in places where the use of electronic devices is limited, such as in airplanes or hospitals, follow all instructions in those places.
- Be careful when you handle used ink cartridges, as there may be some ink around the ink supply port.
 - If ink gets on your skin, wash the area thoroughly with soap and water.
 - If ink gets into your eyes, flush them immediately with water. If discomfort or vision problems continue after a thorough flushing, see a doctor immediately.
 - If ink gets into your mouth, see a doctor right away.
 - Do not disassemble the ink cartridge; otherwise ink may get into your eyes or on your skin.
- Do not shake ink cartridges too vigorously and do not drop them. Also, be careful not to squeeze them or tear their labels. Doing so may cause ink leakage.
- Keep ink cartridges out of the reach of children.

Printer Advisories and Warnings

Read and follow these instructions to avoid damaging the printer or your property. Make sure you keep this manual for future reference.

Advisories and Warnings for Setting Up/Using the Printer

- Do not block or cover the vents and openings in the printer.
- Avoid using outlets on the same circuit as photocopiers or air control systems that regularly switch on and off.
- Avoid electrical outlets controlled by wall switches or automatic timers.
- Keep the entire computer system away from potential sources of electromagnetic interference, such as loudspeakers or the base units of cordless telephones.
- The AC adapter cords should be placed to avoid abrasions, cuts, fraying, crimping, and kinking. Do not place objects on top of the power-supply cord and do not allow the AC adapter or the cord to be stepped on or run over. Be particularly careful to keep the cord straight at the ends.
- If you use an extension cord with the printer, make sure that the total ampere rating of the devices plugged into the extension cord does not exceed the cord's ampere rating. Also, make sure that the total ampere rating of all devices plugged into the wall outlet does not exceed the wall outlet's ampere rating.
- If you plan to use the AC adapter in Germany, the building installation must be protected by a 10 or 16 amp circuit breaker to provide adequate short-circuit protection and over-current protection for the printer.
- When connecting the printer to a computer or other device with a cable, ensure the correct orientation of the connectors. Each connector has only one correct orientation. Inserting a connector in the wrong orientation may damage both devices connected by the cable.
- Place the printer on a flat, stable surface that extends beyond the base of the printer in all directions. The printer will not operate properly if it is tilted at an angle.
- Leave enough space in front of the printer for the paper to be fully ejected.
- Avoid places subject to rapid changes in temperature and humidity. Also, keep the printer and the AC adapter away from direct sunlight, strong light, water, or heat sources.
- Do not insert objects through the slots in the printer.
- Do not put your hand inside the printer during printing.
- Do not touch the white flat cable inside the printer.
- Do not use aerosol products that contain flammable gases inside or around the printer. Doing so may cause fire.
- Do not move the print head by hand; otherwise, you may damage the printer.
- Always turn the printer off using the  button. Do not unplug the printer or turn off the power at the outlet until the  light stops flashing.
- Before transporting the printer, make sure that the print head is in the home (far right) position and the ink cartridges are in place.
- If you are not going to use the printer for a long period, be sure to unplug the AC adapter from the electrical outlet.

Important Instructions

Advisories and Warnings for Using the Printer with a Wireless Connection

- ❑ Radio waves from this printer may negatively affect the operation of medical electronic equipment, causing them to malfunction. When using this printer inside medical facilities or near medical equipment, follow directions from the authorized personnel representing the medical facilities, and follow all posted warnings and directions on the medical equipment.
- ❑ Radio waves from this printer may negatively affect the operation of automatically controlled devices such as automatic doors or fire alarms, and could lead to accidents due to malfunction. When using this printer near automatically controlled devices, follow all posted warnings and directions on these devices.
- ❑ Follow the instructions given by airline crews to use this printer in flight. Turn off the printer during takeoff and landing according to the in-flight announcement.

Printing from a Computer

Printing Basics - Windows

Note:

- See the online help for explanations of the setting items. Right-click an item, and then click **Help**.
- Operations differ depending on the application. See the application's help for details.

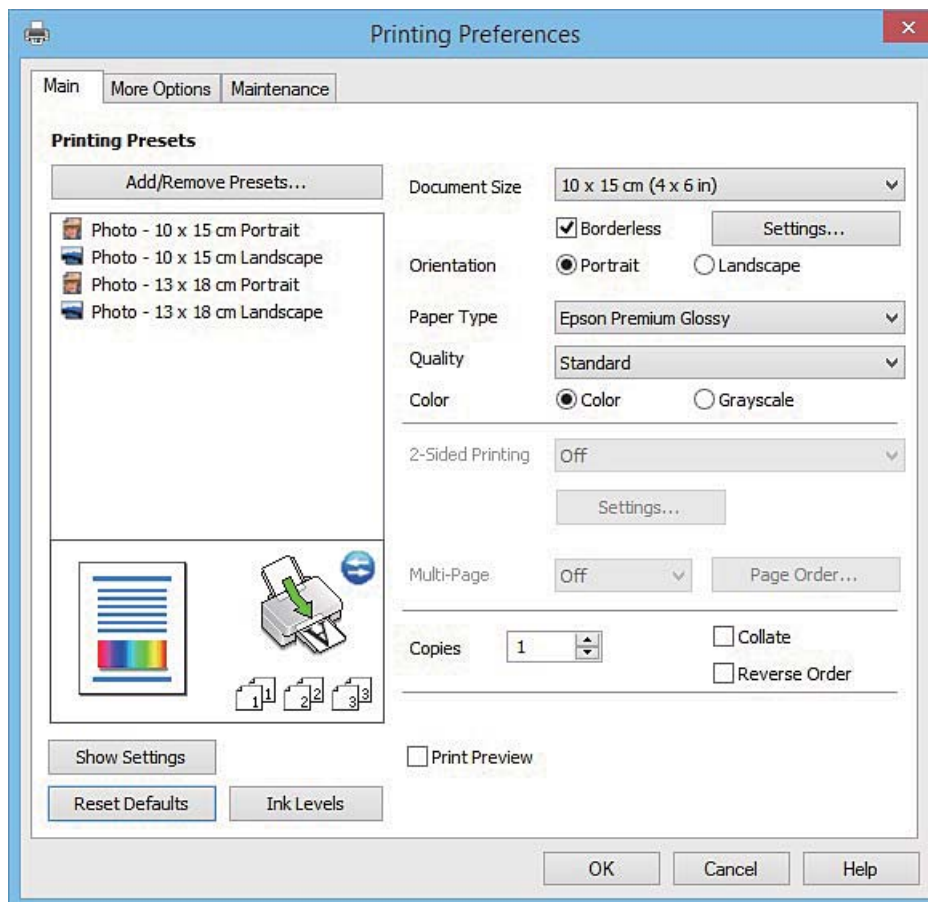
1. Load paper in the printer.



Important:

Make the paper settings on the control panel.

2. Open the file you want to print.
3. Select **Print** or **Print Setup** from the **File** menu.
4. Select your printer.
5. Select **Preferences** or **Properties** to access the printer driver window.



Printing from a Computer

6. Make the following settings.

Document Size: Select the paper size you loaded in the printer.

Borderless: Select to print with no margins around the image.

In borderless printing, the print data is enlarged slightly more than the paper size so that no margins are printed around the edges of the paper. Click **Settings** to select the amount of enlargement.

Orientation: Select the orientation you set in the application.

Paper Type: Select the type of paper you loaded.

Color: Select **Grayscale** when you want to print in black or shades of gray.

Note:

*When printing on envelopes, select **Landscape** as the **Orientation** setting.*

7. Click **OK** to close the printer driver window.

8. Click **Print**.

Related Information

➔ [“Guide to Windows Printer Driver” on page 33](#)

Printing Basics - Mac OS X

Note:

Explanations in the section use TextEdit as an example. Operations and screens differ depending on the application. See the application's help for details.

1. Load paper in the printer.



Important:

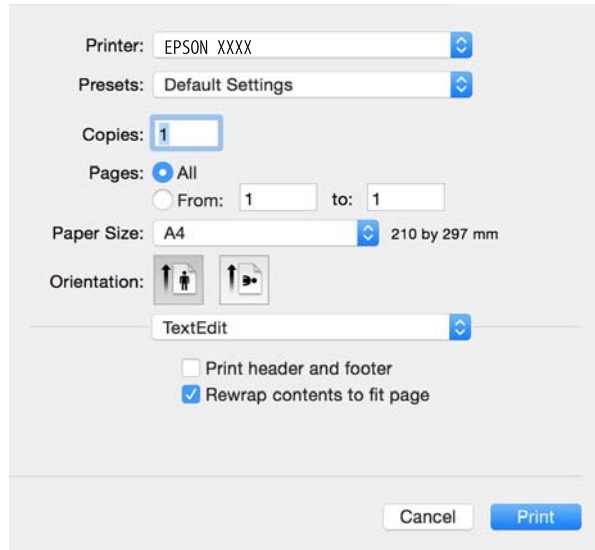
Make the paper settings on the control panel.

2. Open the file you want to print.

Printing from a Computer

3. Select **Print** from the **File** menu or another command to access the print dialog.

If necessary, click **Show Details** or ▼ to expand the print window.



4. Make the following settings.

- Printer: Select your printer.
- Presets: Select when you want to use the registered settings.
- Paper Size: Select the paper size you loaded in the printer.
When printing with no margins, select a "borderless" paper size.
- Orientation: Select the orientation you set in the application.

Note:

- If the above setting menus are not displayed, close the print window, select **Page Setup** from the **File** menu, and then make settings.
- When printing on envelopes, select landscape orientation.

Printing from a Computer

5. Select **Print Settings** from the pop-up menu.

Printer: EPSON XXXX Series

Presets: Default Settings

Copies: 1

Pages: All
 From: 1 to: 1

Paper Size: A5 148 by 210 mm

Orientation: Portrait Landscape

Print Settings

Media Type: Epson Premium Glossy

Print Quality: Quality


Borderless
Expansion: Max

Grayscale
 Mirror Image

Cancel Print

Note:

On Mac OS X v10.8.x or later, if the **Print Settings** menu is not displayed, the Epson printer driver has not been installed correctly.

Select **System Preferences** from the  menu > **Printers & Scanners** (or **Print & Scan, Print & Fax**), remove the printer, and then add the printer again. See the following to add a printer.

<http://epson.sn>

6. Make the following settings.

Media Type: Select the type of paper you loaded.

Expansion: Available when selecting a borderless paper size.

In borderless printing, the print data is enlarged slightly more than the paper size so that no margins are printed around the edges of the paper. Select the amount of enlargement.

Grayscale: Select to print in black or shades of gray.

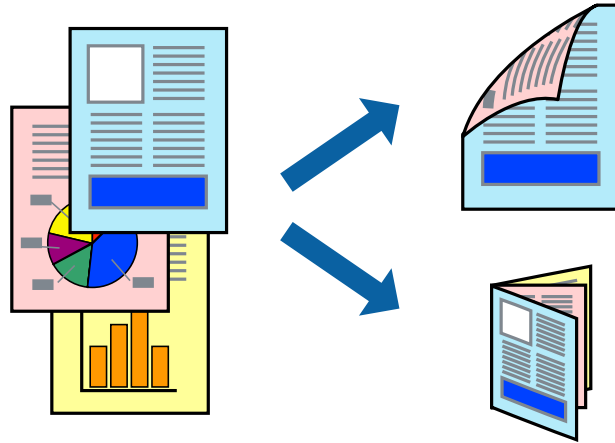
7. Click **Print**.

Related Information

➔ [“Guide to Mac OS X Printer Driver” on page 37](#)

Printing on 2-Sides (for Windows only)

The printer driver prints automatically separating even pages and odd pages. When the printer has finished printing the odd pages, flip the paper over following the instructions to print the even pages. You can also print a booklet that can be created by folding the printout.



Note:

- This feature is not available for borderless printing.
- If you do not use paper that is suitable for 2-sided printing, the print quality may decline and paper jams may occur.
- Depending on the paper and the data, ink may bleed through to the other side of the paper.
- If **EPSON Status Monitor 3** is disabled, access the printer driver, click **Extended Settings** on the **Maintenance** tab, and then select **Enable EPSON Status Monitor 3**.
- 2-sided printing may not be available when the printer is accessed over a network or is used as a shared printer.

1. Load paper in the printer.
2. Open the file you want to print.
3. Access the printer driver window.
4. Select **Manual (Long-edge binding)** or **Manual (Short-edge binding)** from **2-Sided Printing** on the **Main** tab.
5. Click **Settings**, make the appropriate settings, and then click **OK**.

Note:

To print as a booklet, select **Booklet**.

6. Set the other items on the **Main** and **More Options** tabs as necessary, and then click **OK**.
7. Click **Print**.

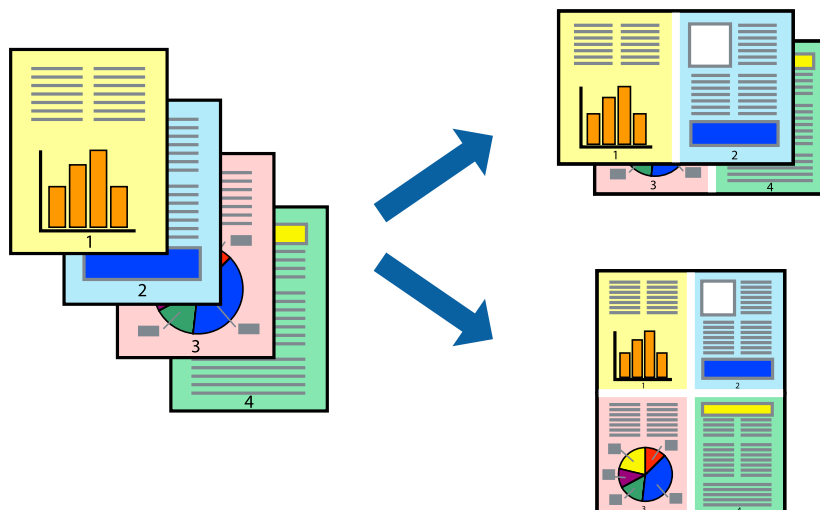
When the first side has finished printing, a pop-up window is displayed on the computer. Follow the on-screen instructions.

Related Information

- ➔ [“Printing Basics - Windows” on page 12](#)

Printing Several Pages on One Sheet

You can print two or four pages of data on a single sheet of paper.



Printing Several Pages on One Sheet - Windows

Note:

This feature is not available for borderless printing.

1. Load paper in the printer.
2. Open the file you want to print.
3. Access the printer driver window.
4. Select **2-Up** or **4-Up** as the **Multi-Page** setting on the **Main** tab.
5. Click **Page Order**, make the appropriate settings, and then click **OK** to close the window.
6. Set the other items on the **Main** and **More Options** tabs as necessary, and then click **OK**.
7. Click **Print**.

Related Information

➔ [“Printing Basics - Windows” on page 12](#)

Printing Several Pages on One Sheet - Mac OS X

1. Load paper in the printer.
2. Open the file you want to print.
3. Access the print dialog.
4. Select **Layout** from the pop-up menu.

Printing from a Computer

5. Set the number of pages in **Pages per Sheet**, the **Layout Direction** (page order), and **Border**.
6. Set the other items as necessary.
7. Click **Print**.

Related Information

➔ [“Printing Basics - Mac OS X” on page 13](#)

Printing to Fit the Paper Size

You can print to fit the paper size you loaded in the printer.



Printing to Fit the Paper Size - Windows

Note:

This feature is not available for borderless printing.

1. Load paper in the printer.
2. Open the file you want to print.
3. Access the printer driver window.
4. Make the following settings on the **More Options** tab.
 - Document Size: Select the paper size you set in the application.
 - Output Paper: Select the paper size you loaded in the printer.

Fit to Page is selected automatically.

Note:

*If you want to print a reduced image at the center of the page, select **Center**.*

5. Set the other items on the **Main** and **More Options** tabs as necessary, and then click **OK**.
6. Click **Print**.

Related Information

➔ [“Printing Basics - Windows” on page 12](#)

Printing to Fit the Paper Size - Mac OS X

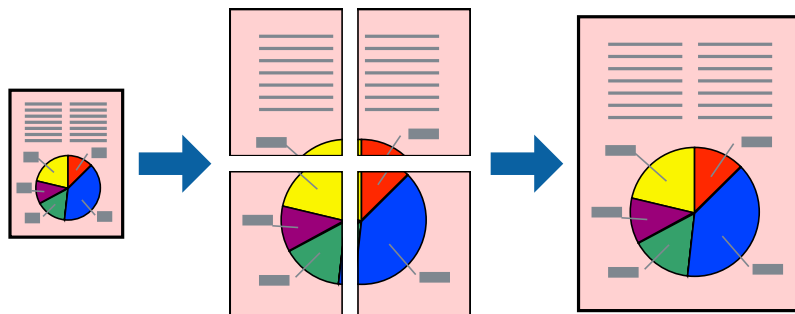
1. Load paper in the printer.
2. Open the file you want to print.
3. Access the print dialog.
4. Select the size of the paper you set in the application as the **Paper Size** setting.
5. Select **Paper Handling** from the pop-up menu.
6. Select **Scale to fit paper size**.
7. Select the paper size you loaded in the printer as the **Destination Paper Size** setting.
8. Set the other items as necessary.
9. Click **Print**.

Related Information

➔ [“Printing Basics - Mac OS X” on page 13](#)

Printing One Image on Multiple Sheets to Create a Poster (for Windows Only)

This feature allows you to print one image on multiple sheets of paper. You can create a larger poster by taping them together.

**Note:**

This feature is not available for borderless printing.

1. Load paper in the printer.
2. Open the file you want to print.

Printing from a Computer

3. Access the printer driver window.
4. Select **2x1 Poster**, **2x2 Poster**, **3x3 Poster**, or **4x4 Poster** from **Multi-Page** on the **Main** tab.
5. Click **Settings**, make the appropriate settings, and then click **OK**.

Note:

Print Cutting Guides allows you to print a cutting guide.

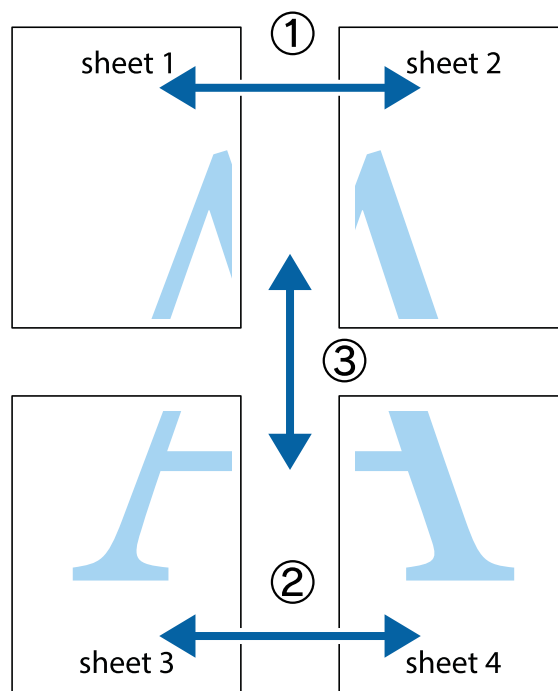
6. Set the other items on the **Main** and **More Options** tabs as necessary, and then click **OK**.
7. Click **Print**.

Related Information

➔ [“Printing Basics - Windows” on page 12](#)

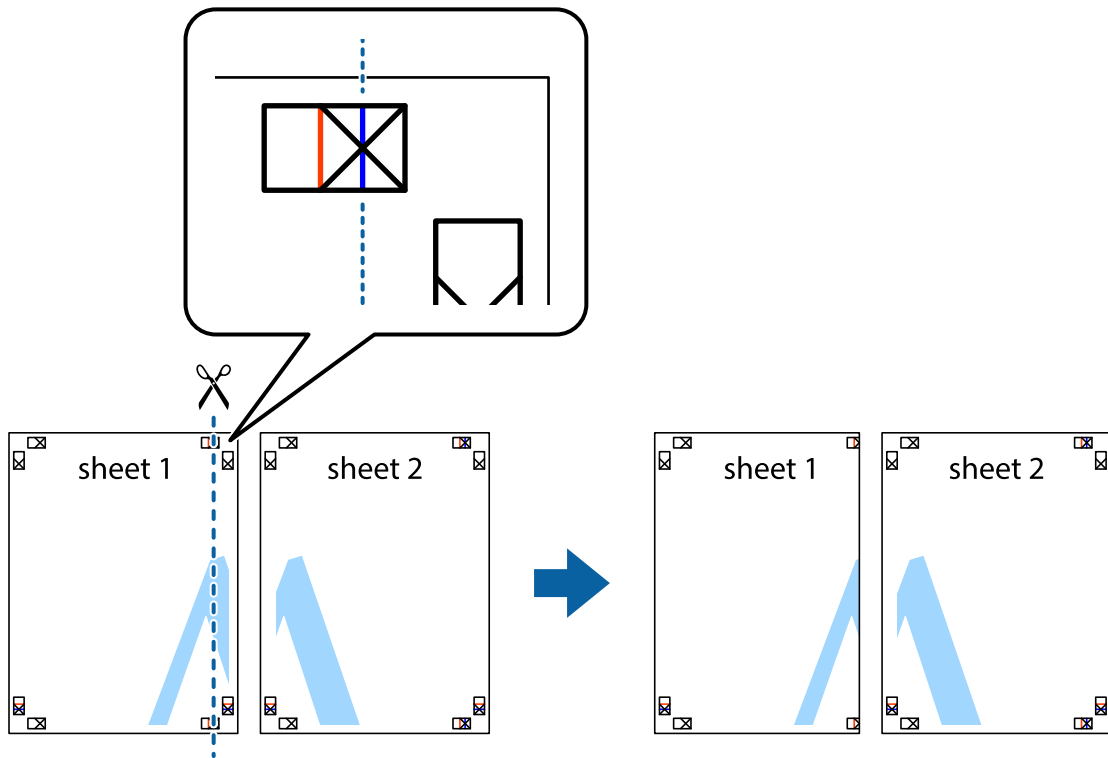
Making Posters Using Overlapping Alignment Marks

Here is an example of how to make a poster when **2x2 Poster** is selected, and **Overlapping Alignment Marks** is selected in **Print Cutting Guides**.

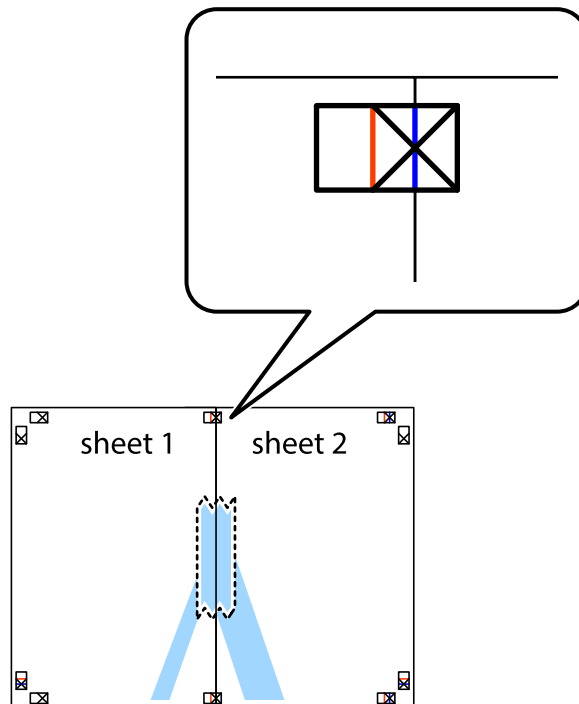


Printing from a Computer

1. Prepare Sheet 1 and Sheet 2. Cut off the margins of Sheet 1 along the vertical blue line through the center of the top and bottom cross marks.

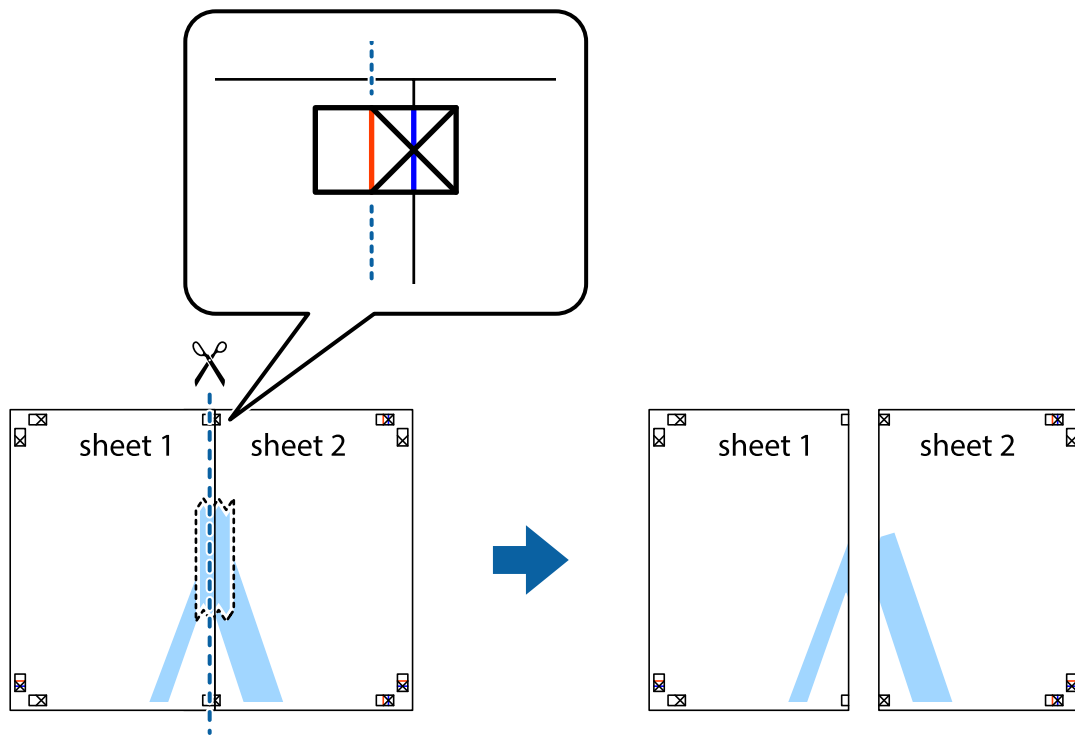


2. Place the edge of Sheet 1 on top of Sheet 2 and align the cross marks, then temporarily tape the two sheets together from the back.

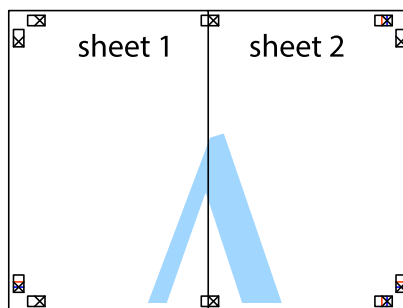


Printing from a Computer

- Cut the taped sheets in two along the vertical red line through the alignment markers (this time, the line to the left of the cross marks).



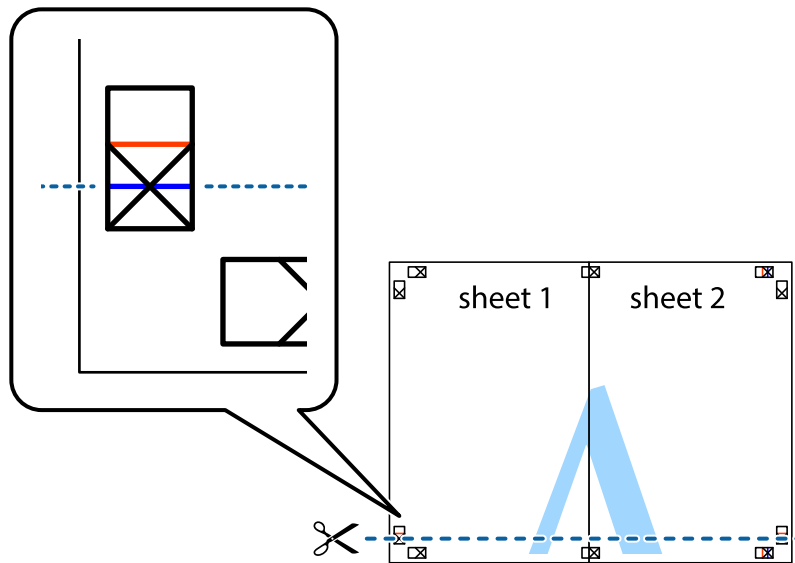
- Tape the sheets together from the back.



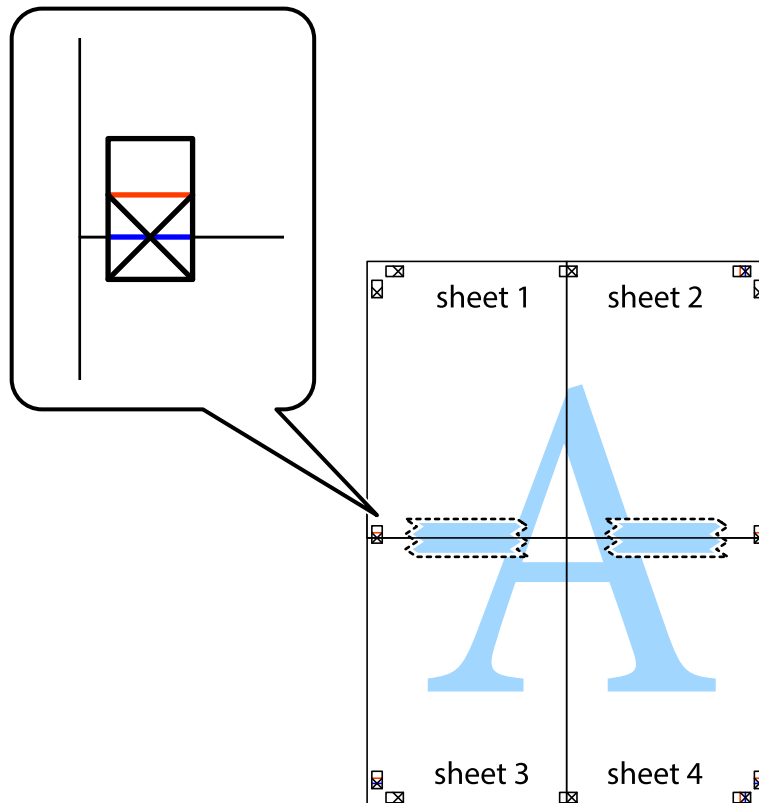
- Repeat steps 1 to 4 to tape Sheet 3 and Sheet 4 together.

Printing from a Computer

6. Cut off the margins of Sheet 1 and Sheet 2 along the horizontal blue line through the center of the left and right side cross marks.

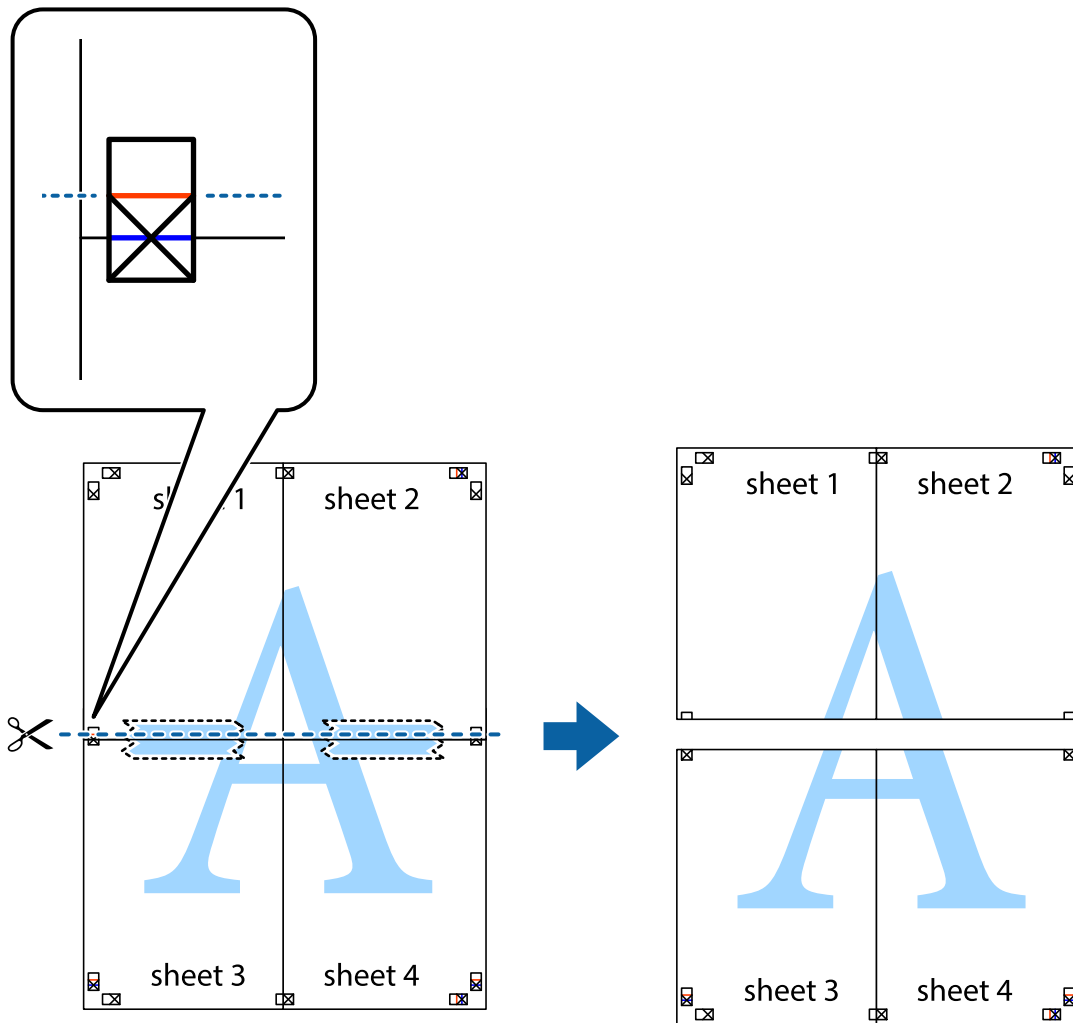


7. Place the edge of Sheet 1 and Sheet 2 on top of Sheet 3 and Sheet 4 and align the cross marks, and then temporarily tape them together from the back.

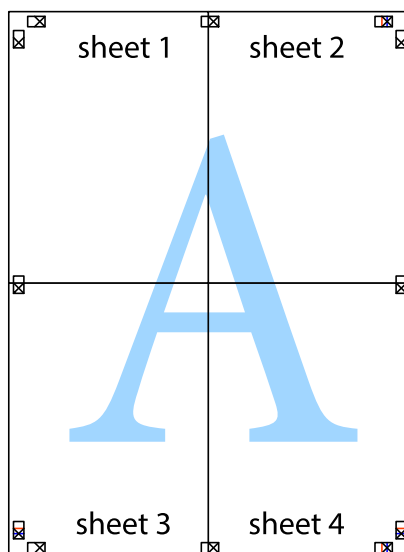


Printing from a Computer

- Cut the taped sheets in two along the horizontal red line through the alignment markers (this time, the line above the cross marks).

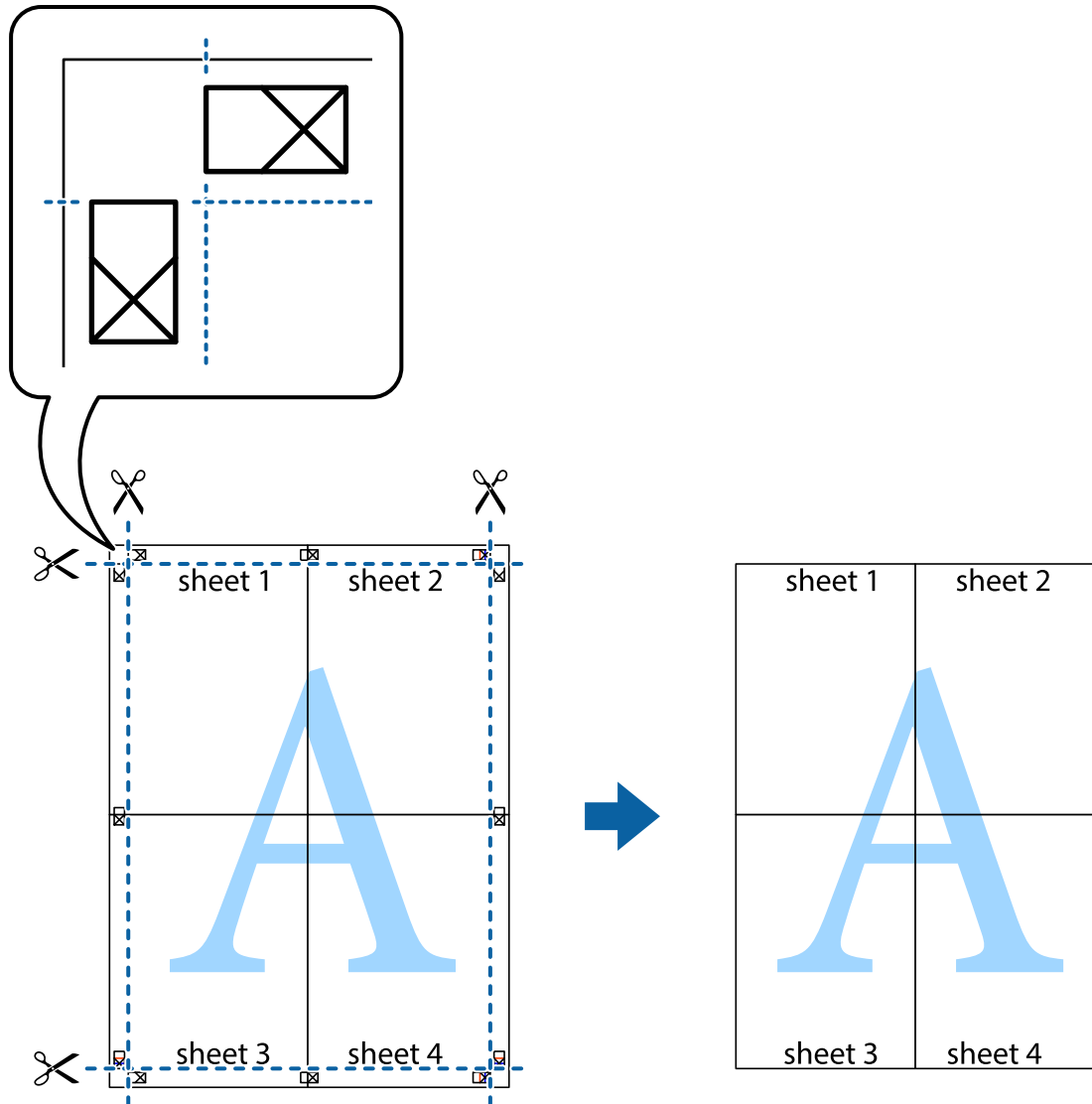


- Tape the sheets together from the back.



Printing from a Computer

10. Cut off the remaining margins along the outer guide.



Printing Using Advanced Features

This section introduces a variety of additional layout and printing features available on the printer driver.

Related Information

- ➔ [“Windows Printer Driver” on page 33](#)
- ➔ [“Mac OS X Printer Driver” on page 36](#)

Adding a Printing Preset to Print Easily

If you create your own preset of frequently used print settings on the printer driver, you can print easily by selecting the preset from the list.

Printing from a Computer

Windows

To add your own preset, set items such as the **Document Size** and **Paper Type** on the **Main** or **More Options** tab, and then click **Add/Remove Presets** in **Printing Presets**.

Note:

To delete an added preset, click **Add/Remove Presets**, select the preset name you want to delete from the list, and then delete it.

Mac OS X

Access the print dialog. To add your own preset, set items such as the **Paper Size** and **Media Type**, and then save the current settings as the preset in the **Presets** setting.

Note:

To delete an added preset, click **Presets > Show Presets**, select the preset name you want to delete from the list, and then delete it.

Printing a Reduced or Enlarged Document

You can reduce or enlarge the size of a document by a specific percentage.

Windows

Note:

This feature is not available for borderless printing.

Set the **Document Size** on the **More Options** tab. Select **Reduce/Enlarge Document**, **Zoom to**, and then enter a percentage.

Mac OS X

Note:

Operations differ depending on the application. See the application's help for details.

Select **Page Setup** (or **Print**) from the **File** menu. Select the printer from **Format For**, select the paper size, and then enter a percentage in **Scale**. Close the window, and then print following the basic printing instructions.

Adjusting the Print Color

You can adjust the colors used in the print job.

PhotoEnhance produces sharper images and more vivid colors by automatically adjusting the contrast, saturation, and brightness of the original image data.

Note:

- These adjustments are not applied to the original data.
- PhotoEnhance** adjusts the color by analyzing the location of the subject. Therefore, if you have changed the location of the subject by reducing, enlarging, cropping, or rotating the image, the color may change unexpectedly. Selecting the borderless setting also changes the location of the subject resulting in changes in color. If the image is out of focus, the tone may be unnatural. If the color is changed or becomes unnatural, print in a mode other than **PhotoEnhance**.

Windows

Select the method of color correction from **Color Correction** on the **More Options** tab.

Printing from a Computer

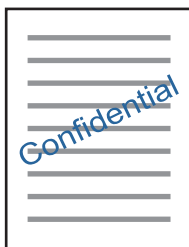
If you select **Automatic**, the colors are automatically adjusted to match the paper type and print quality settings. If you select **Custom** and click **Advanced**, you can make your own settings.

Mac OS X

Access the print dialog. Select **Color Matching** from the pop-up menu, and then select **EPSON Color Controls**. Select **Color Options** from the pop-up menu, and then select one of the available options. Click the arrow next to **Advanced Settings** and make the appropriate settings.

Printing a Watermark (for Windows Only)

You can print a watermark such as "Confidential" on your printouts. You can also add your own watermark.



Note:

This feature is not available with borderless printing.

Click **Watermark Features** on the **More Options** tab, and then select a watermark. Click **Settings** to change details such as the density and position of the watermark.

Printing Photos Using Epson Easy Photo Print

Epson Easy Photo Print lets you lay out and print photos easily on various types of paper. See the application's help for details.

Note:

- By printing on genuine Epson photo paper, the ink quality is maximized and the printouts are vivid and clear.*
- To perform borderless printing using a commercially available application, make the following settings.*
 - Create image data to fit the paper size. If a margin setting is available in the application you are using, set the margin to 0 mm.*
 - Enable the borderless printing setting in the printer driver.*

Related Information

➔ ["Epson Easy Photo Print" on page 39](#)

Canceling Printing

Note:

- ❑ *In Windows, you cannot cancel a print job from the computer once it has been completely sent to the printer. In this case, cancel the print job by using the printer's control panel.*
- ❑ *When printing several pages from Mac OS X, you cannot cancel all of the jobs by using the control panel. In this case, cancel the print job from the computer.*
- ❑ *If you have sent a print job from Mac OS X v10.6.8 through the network, you may not be able to cancel printing from the computer. In this case, cancel the print job by using the printer's control panel.*


Canceling Printing - Windows

1. Access the printer driver window.
2. Select the **Maintenance** tab.
3. Click **Print Queue**.
4. Right-click on the job you want to cancel and then select **Cancel**.

Related Information

➔ [“Windows Printer Driver” on page 33](#)

Canceling Printing - Mac OS X

1. Click the printer icon in the **Dock**.
2. Select the job you want to cancel.
3. Cancel the job.
 - ❑ Mac OS X v10.8.x or later
Click  next to the progress meter.
 - ❑ Mac OS X v10.6.8 to v10.7.x
Click **Delete**.

Checking the Ink Levels

You can check the approximate ink levels from the computer.

Checking the Ink Levels - Windows

1. Access the printer driver window.
2. Click **Ink Levels** on the **Main** tab.


Note:

*If EPSON Status Monitor 3 is disabled, the ink levels are not displayed. Click **Extended Settings** on the **Maintenance** tab, and then select **Enable EPSON Status Monitor 3**.*

Related Information

➔ [“Windows Printer Driver” on page 33](#)

Checking the Ink Levels - Mac OS X

1. Select **System Preferences** from the  menu > **Printers & Scanners** (or **Print & Scan**, **Print & Fax**), and then select the printer.
2. Click **Options & Supplies** > **Utility** > **Open Printer Utility**.
3. Click **EPSON Status Monitor**.

Checking and Cleaning the Print Head

If the nozzles are clogged, the printouts become faint, there is visible banding, or unexpected colors appear. When print quality has declined, use the nozzle check feature and check if the nozzles are clogged. If the nozzles are clogged, clean the print head.

**Important:**

Do not turn off the printer during head cleaning. If the head cleaning is incomplete, you may not be able to print.

Note:

- Because print head cleaning uses some ink, clean the print head only if quality declines.
- When ink is low, you may not be able to clean the print head. Replace the ink cartridge first.
- If print quality has not improved after repeating nozzle check and head cleaning about two times, wait for at least six hours without printing, and then run the nozzle check again and repeat the head cleaning if necessary. We recommend to turn off the printer. If print quality has still not improved, contact Epson support.
- To prevent the print head from drying out, do not unplug the printer while the power is on.


Checking and Cleaning the Print Head - Windows

1. Load 3.5×5 in. (9×13 cm) size or larger paper in the printer.
2. Access the printer driver window.
3. Click **Nozzle Check** on the **Maintenance** tab.
4. Follow the on-screen instructions.

Related Information

➔ [“Windows Printer Driver” on page 33](#)

Checking and Cleaning the Print Head - Mac OS X

1. Load 3.5×5 in. (9×13 cm) size or larger paper in the printer.
2. Select **System Preferences** from the  menu > **Printers & Scanners** (or **Print & Scan**, **Print & Fax**), and then select the printer.
3. Click **Options & Supplies** > **Utility** > **Open Printer Utility**.
4. Click **Nozzle Check**.
5. Follow the on-screen instructions.

Network Service and Software Information

This section introduces the network services and software products available for your printer from the Epson website.

Epson Connect Service

By using Epson Connect service available on the Internet, you can print from your smartphone, tablet PC, or laptop, anytime and practically anywhere.

The features available on the Internet are as follows.

Email Print	Epson iPrint remote print	Scan to Cloud	Remote Print Driver
✓	✓	-	✓

See the Epson Connect portal website for details.

<https://www.epsonconnect.com/>

<http://www.epsonconnect.eu> (Europe only)

Web Config

Web Config is an application that runs in a web browser, such as Internet Explorer and Safari, on a computer or smart device. You can confirm the printer status or change the network service and printer settings. To use the Web Config, connect the printer and the computer or device to the same network.

Note:

The following browsers are supported.

OS	Browser
Windows XP or later	Internet Explorer 8 or later, Firefox [*] , Chrome [*]
Mac OS X v10.6.8 or later	Safari [*] , Firefox [*] , Chrome [*]
iOS [*]	Safari [*]
Android 2.3 or later	Default browser
Chrome OS [*]	Default browser

*: Use the latest version.

Running Web Config on a Web Browser

1. Check the printer's IP address.

Select **Setup** > **Network Settings** > **Network Status** from the home screen, and then check the printer's IP address.

2. Launch a Web browser from a computer or smart device, and then enter the printer's IP address.

Format:

IPv4: http://the printer's IP address/

IPv6: http://[the printer's IP address]/

Examples:

IPv4: http://192.168.100.201/

IPv6: http://[2001:db8::1000:1]/

Note:

Using the smart device, you can also run Web Config from the maintenance screen of Epson iPrint.

Running Web Config on Windows

When connecting a computer to the printer using WSD, follow the steps below to run Web Config.

1. Access the devices and printers screen in Windows.

- Windows 8.1/Windows 8

Select **Desktop** > **Settings** > **Control Panel** > **View devices and printers in Hardware and Sound** (or **Hardware**).

- Windows 7

Click the start button, and select **Control Panel** > **View devices and printers in Hardware and Sound**.


- Windows Vista

Click the start button, and select **Control Panel** > **Printers in Hardware and Sound**.

2. Right-click on your printer and select **Properties**.

3. Select the **Web Service** tab and click the URL.

Running Web Config on Mac OS X

1. Select **System Preferences** from the  menu > **Printers & Scanners** (or **Print & Scan, Print & Fax**), and then select the printer.
2. Click **Options & Supplies** > **Show Printer Webpage**.

Windows Printer Driver

The printer driver controls the printer according to the commands from an application. Making settings on the printer driver provides the best printing results. You can also check the status of the printer or keep it in top operating condition using the printer driver utility.

Note:

*You can change the language of the printer driver. Select the language you want to use from the **Language** setting on the **Maintenance** tab.*

Accessing the printer driver from applications

To make settings that apply only to the application you are using, access from that application.

Select **Print** or **Print Setup** from the **File** menu. Select your printer, and then click **Preferences** or **Properties**.

Note:

Operations differ depending on the application. See the application's help for details.

Accessing the printer driver from the control panel

To make settings that apply to all of the applications, access from the control panel.

 Windows 8.1/Windows 8

Select **Desktop > Settings > Control Panel > View devices and printers** in **Hardware and Sound**. Right-click on your printer, or press and hold it and then select **Printing preferences**.

 Windows 7

Click the start button, and select **Control Panel > View devices and printers** in **Hardware and Sound**. Right-click on your printer and select **Printing preferences**.

 Windows Vista

Click the start button, and select **Control Panel > Printers** in **Hardware and Sound**. Right-click on your printer and select **Printing preferences**.

 Windows XP

Click the start button, and select **Control Panel > Printers and Other Hardware > Printers and Faxes**. Right-click on your printer and select **Printing preferences**.

Accessing the printer driver from the printer icon on the task bar

The printer icon on the desktop task bar is a shortcut icon allowing you to quickly access the printer driver.

If you click the printer icon and select **Printer Settings**, you can access the same printer settings window as the one displayed from the control panel. If you double-click this icon, you can check the status of the printer.

Note:

*If the printer icon is not displayed on the task bar, access the printer driver window, click **Monitoring Preferences** on the **Maintenance** tab, and then select **Register the shortcut icon to the taskbar**.*

Guide to Windows Printer Driver

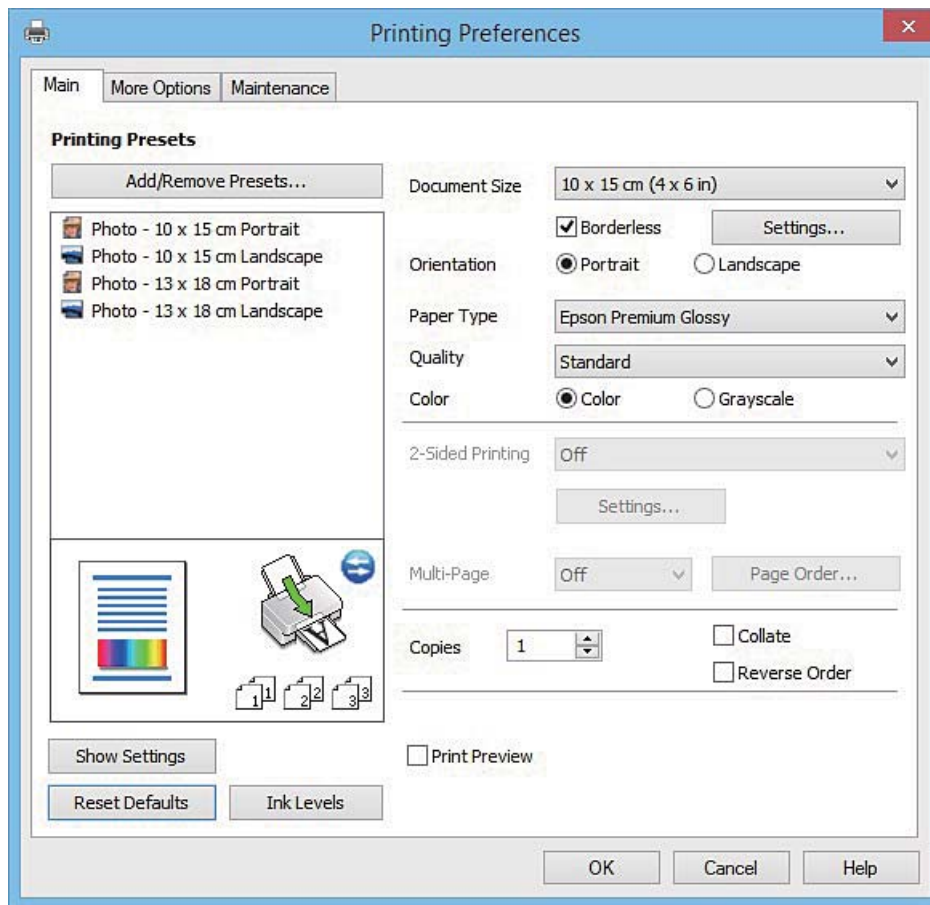
Help is available in the printer driver for Windows. To view explanations of the setting items, right-click on each item, and then click **Help**.

Main Tab

You can make basic settings for printing, such as paper type or paper size.

Network Service and Software Information

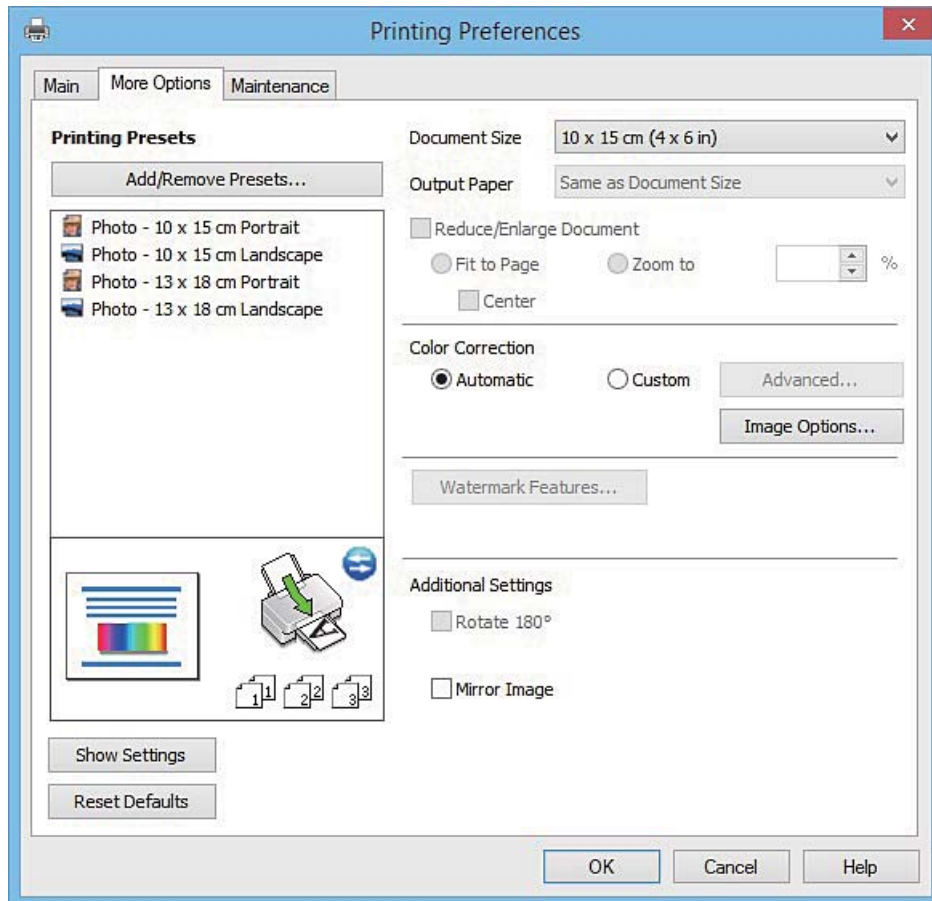
You can also make settings for printing both sides of the paper or printing multiple pages on one sheet.



Network Service and Software Information

More Options Tab

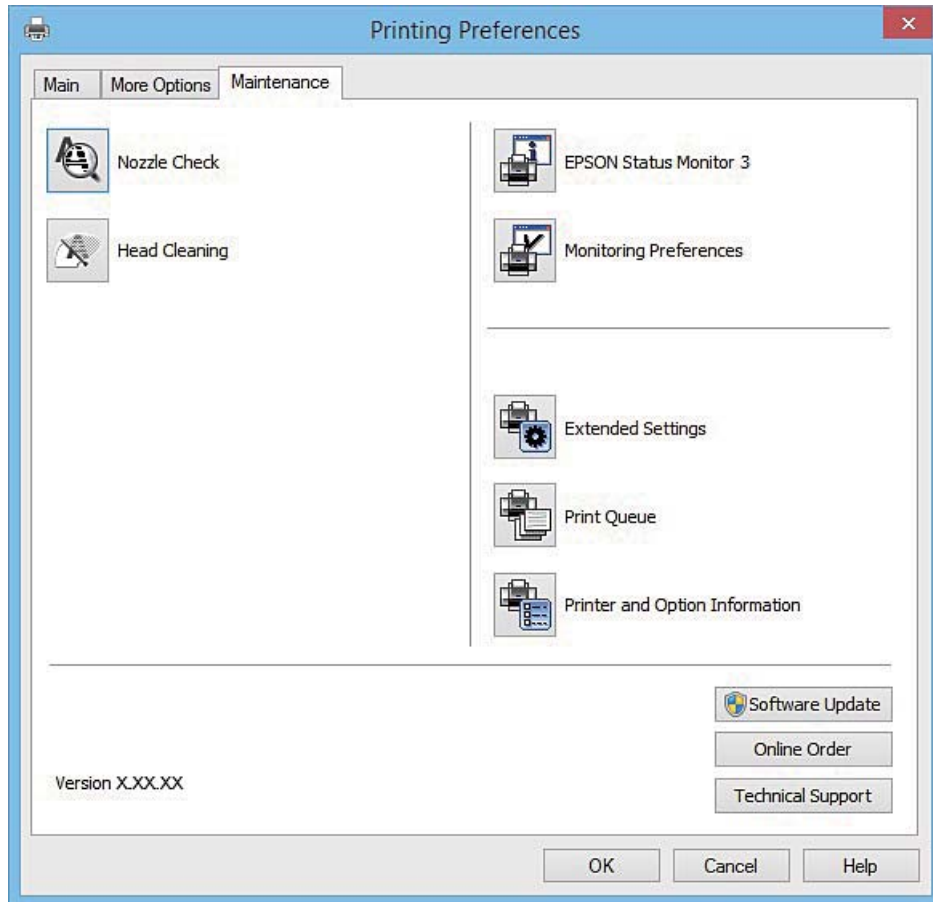
You can select additional layout and printing options such as changing the size of a printout or making color corrections.



Network Service and Software Information

Maintenance Tab

You can run maintenance features such as nozzle check and print head cleaning, and by starting **EPSON Status Monitor 3**, you can check printer status and error information.



Making Operation Settings for the Windows Printer Driver

You can make settings such as enabling **EPSON Status Monitor 3**.

1. Access the printer driver window.
2. Click **Extended Settings** on the **Maintenance** tab.
3. Make the appropriate settings, and then click **OK**.
See the online help for explanations of the setting items.

Related Information

➔ [“Windows Printer Driver” on page 33](#)

Mac OS X Printer Driver

The printer driver controls the printer according to the commands from an application. Making settings on the printer driver provides the best printing results. You can also check the status of the printer or keep it in top operating condition using the printer driver utility.

Network Service and Software Information

Accessing the printer driver from applications

Click **Page Setup** or **Print** on the **File** menu of your application. If necessary, click **Show Details** (or ▼) to expand the print window.

Note:

Depending on the application being used, **Page Setup** may not be displayed in the **File** menu, and the operations for displaying the print screen may differ. See the application's help for details.

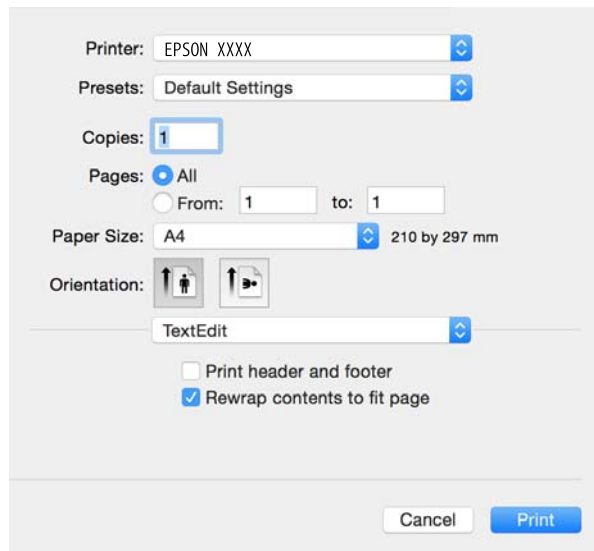
Starting the utility

Select **System Preferences** from the  menu > **Printers & Scanners** (or **Print & Scan, Print & Fax**), and then select the printer. Click **Options & Supplies** > **Utility** > **Open Printer Utility**.

Guide to Mac OS X Printer Driver

Print dialog

Switch the pop-up menu on the center of the screen to show more items.



Pop-up Menu	Descriptions
Print Settings	You can make the basic print settings such as paper type and print quality.
Layout	You can select a layout for printing several pages on one sheet or select to print a border.
Paper Handling	You can reduce or enlarge the size of the print job to automatically fit the paper size you loaded.
Color Matching	You can adjust the colors.
Color Options	When you select EPSON Color Controls from the Color Matching menu, you can select a color correction method.

Network Service and Software Information

Note:

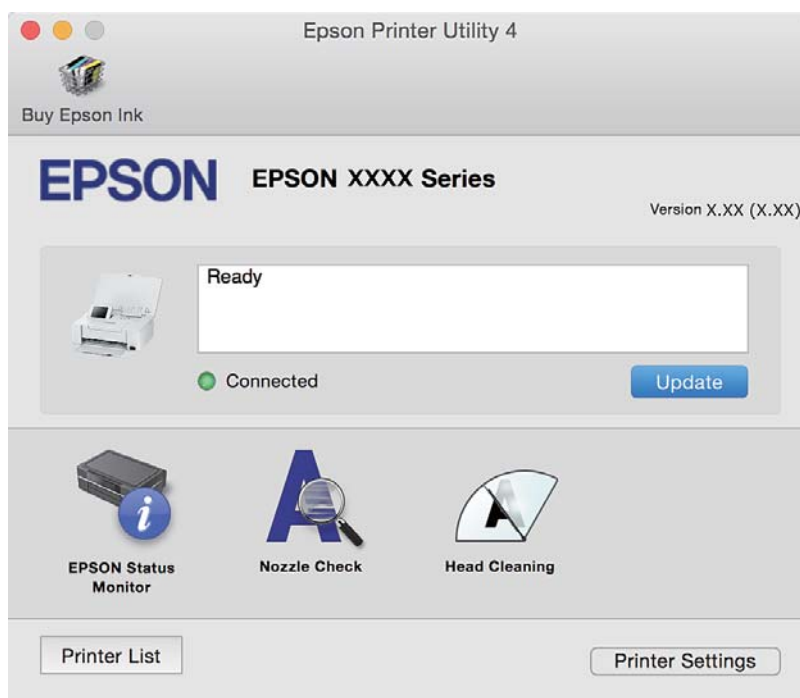
On Mac OS X v10.8.x or later, if **Print Settings** menu is not displayed, Epson printer driver has not been installed correctly.

Select **System Preferences** from the  menu > **Printers & Scanners** (or **Print & Scan**, **Print & Fax**), remove the printer, and then add the printer again. See the following to add a printer.

<http://epson.sn>


Epson Printer Utility

You can run a maintenance feature such as nozzle check and print head cleaning, and by starting **EPSON Status Monitor**, you can check printer status and error information.



Making Operation Settings for the Mac OS X Printer Driver

Accessing the Operation Settings Window of the Mac OS X Printer Driver

Select **System Preferences** from the  menu > **Printers & Scanners** (or **Print & Scan**, **Print & Fax**), and then select the printer. Click **Options & Supplies** > **Options** (or **Driver**).

Operation Settings of the Mac OS X Printer Driver

- Warning Notifications: Allows the printer driver to display warning notifications.
- Establish bidirectional communication: Usually, this should be set to **On**. Select **Off** when acquiring the printer information is impossible because the printer is shared with Windows computers on a network or for any other reason.

Epson Easy Photo Print

Epson Easy Photo Print is an application that allows you to easily print photos with various layouts. You can preview the photo image and adjust the images or position. You can also print photos with a frame. See the application's help for details.

Note:

To use this application, the printer driver needs to be installed.

Starting on Windows

- Windows 8.1/Windows 8

Enter the application name in the search charm, and then select the displayed icon.

- Except for Windows 8.1/Windows 8

Click the start button, and then select **All Programs** or **Programs > Epson Software > Epson Easy Photo Print**.

Starting on Mac OS X

Select **Go > Applications > Epson Software > Epson Easy Photo Print**.

EPSON Software Updater

EPSON Software Updater is an application that checks for new or updated software on the internet and installs it. You can also update the printer's firmware and manual.

Starting on Windows

- Windows 8.1/Windows 8

Enter the application name in the search charm, and then select the displayed icon.

- Except for Windows 8.1/Windows 8

Click the start button, and select **All Programs** or **Programs > Epson Software > EPSON Software Updater**.

Note:

*You can also start EPSON Software Updater by clicking the printer icon on the task bar on the desktop, and then selecting **Software Update**.*

Starting on Mac OS X


Select **Go > Applications > Epson Software > EPSON Software Updater**.

Uninstalling Applications

Note:

Log on to your computer as an administrator. Enter the administrator password if the computer prompts you.

Uninstalling Applications - Windows



1. Press the  button to turn off the printer.

Network Service and Software Information

2. Quit all running applications.
3. Open **Control Panel**:
 - Windows 8.1/Windows 8
Select **Desktop > Settings > Control Panel**.
 - Except for Windows 8.1/Windows 8
Click the start button and select **Control Panel**.
4. Open **Uninstall a program** (or **Add or Remove Programs**):
 - Windows 8.1/Windows 8/Windows 7/Windows Vista
Select **Uninstall a program** in **Programs**.
 - Windows XP
Click **Add or Remove Programs**.
5. Select the application you want to uninstall.
6. Uninstall the applications:
 - Windows 8.1/Windows 8/Windows 7/Windows Vista
Click **Uninstall/Change** or **Uninstall**.
 - Windows XP
Click **Change/Remove** or **Remove**.

Note:
If the **User Account Control** window is displayed, click **Continue**.
7. Follow the on-screen instructions.

Uninstalling Applications - Mac OS X

1. Download the Uninstaller using EPSON Software Updater.
Once you have downloaded the Uninstaller, you do not need to download it again each time you uninstall the application.
2. Press the  button to turn off the printer.
3. To uninstall the printer driver, select **System Preferences** from the  menu > **Printers & Scanners** (or **Print & Scan, Print & Fax**), and then remove the printer from the enabled printers list.
4. Quit all running applications.
5. Select **Go > Applications > Epson Software > Uninstaller**.
6. Select the application you want to uninstall, and then click **Uninstall**.



Important:

The Uninstaller removes all drivers for Epson inkjet printers on the computer. If you use multiple Epson inkjet printers and you only want to delete some drivers, delete all of them first, and then install the necessary printer driver again.

Network Service and Software Information

Note:

If you cannot find the application you want to uninstall in the application list, you cannot uninstall using the Uninstaller. In this situation, select **Go > Applications > Epson Software**, select the application you want to uninstall, and then drag it to the trash icon.

Related Information

➔ [“EPSON Software Updater” on page 39](#)

Installing Applications

Connect your computer to the network and install the latest version of applications from the website.

Note:

- Log on to your computer as an administrator. Enter the administrator password if the computer prompts you.
- When reinstalling an application, you need to uninstall it first.

1. Quit all running applications.
2. When installing the printer driver, disconnect the printer and the computer temporarily.

Note:

Do not connect the printer and the computer until you are instructed to do so.

3. Install the applications by following the instructions on the website below.

<http://epson.sn>

Related Information

➔ [“Uninstalling Applications” on page 39](#)

Updating Applications and Firmware

You may be able to clear certain problems and improve or add functions by updating the applications and the firmware. Make sure you use the latest version of the applications and firmware.

1. Make sure that the printer and the computer are connected, and the computer is connected to the internet.
2. Start EPSON Software Updater, and update the applications or the firmware.

**Important:**

Do not turn off the computer or the printer while updating.

Note:

If you cannot find the application you want to update in the list, you cannot update using the EPSON Software Updater. Check for the latest versions of the applications from your local Epson website.

<http://www.epson.com>

Related Information

➔ [“EPSON Software Updater” on page 39](#)

Connecting the Printer to the Smart Device or Computer

Connection Types Between the Printer and a Smart Device

Connection Type - Wi-Fi

Connect the printer and the smart device to the access point. This is the typical connection method for home or office networks where computers are connected by Wi-Fi through the access point. The illustrations may vary by model.



Related Information

➔ [“Procedure Outline for Connecting through an Access Point” on page 43](#)

Connection Type - Wi-Fi Direct (Direct Connection)

Use this connection method when you are not using Wi-Fi at home or at the office, or when you want to connect the printer and the smart device directly.

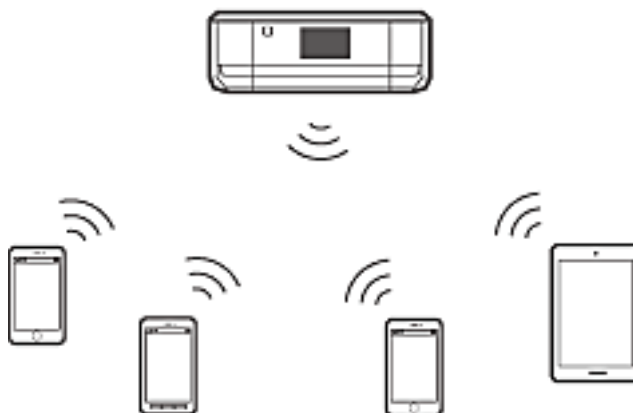
There are two Wi-Fi Direct modes. The illustrations may vary by model.

Simple AP Mode

In this mode, the printer acts as an access point and you can connect up to four devices to the printer without having to use a standard access point. However, devices directly connected to the printer cannot communicate

Connecting the Printer to the Smart Device or Computer

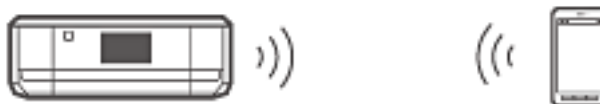
with each other through the printer. There are two ways to connect to the printer from a smart device; Wi-Fi connection and Wi-Fi Direct connection.



The printer can be connected by Wi-Fi and Simple AP mode simultaneously. However, if you start a network connection in Simple AP mode when the printer is connected by Wi-Fi, the Wi-Fi is temporarily disconnected.

Wi-Fi Direct Mode

You can establish a one-to-one connection between the printer and a smart device. Since the network connection is disconnected in Wi-Fi Direct mode, this type of connection should only be used as a temporary measure. Your smart device must be Wi-Fi Direct capable. See the manual provided with your smart device for details.



Related Information

➔ [“Procedure Outline for Wi-Fi Direct Connection \(Simple AP Mode\)” on page 56](#)

Connection Settings Between the Printer and a Smart Device

Procedure Outline for Connecting through an Access Point

Connect the printer to the access point by Wi-Fi, and then connect the smart device to the same network (SSID). Make the following settings in order.

Making Wi-Fi Network Settings from the Printer's Control Panel

Make Wi-Fi settings from the printer's control panel to set up the Wi-Fi and connect to the access point.

Connecting the Printer to the Smart Device or Computer

Connecting the Smart Device to the Same Network as the Printer

Install Epson iPrint on your smart device, and then connect it to the same network (SSID) as the printer. Epson iPrint is a free application for smart devices. This allows you to print photos and other content from the smart device.

Checking the Connection Using Epson iPrint

Check the connection between the printer and the smart device using Epson iPrint.

Related Information

- ➔ [“Making Wi-Fi Network Settings from the Printer's Control Panel” on page 44](#)
- ➔ [“Connecting the Smart Device to the Same Network as the Printer” on page 56](#)
- ➔ [“Checking the Connection Using Epson iPrint” on page 62](#)

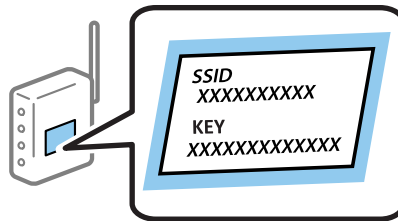
Making Wi-Fi Network Settings from the Printer's Control Panel

Making Wi-Fi Settings Manually from the Control Panel

You can manually set up the information necessary to connect to an access point from the printer's control panel. To set up manually, you need the SSID and password for an access point.

Note:

If you are using an access point with its default settings, the SSID and password are on the label. If you do not know the SSID and password, contact the person who set up the access point, or see the manual provided with the access point.

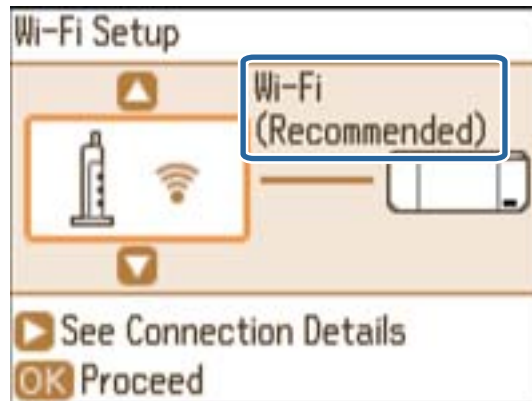


1. Select **Wi-Fi Setup** on the home screen, and then press the OK button.

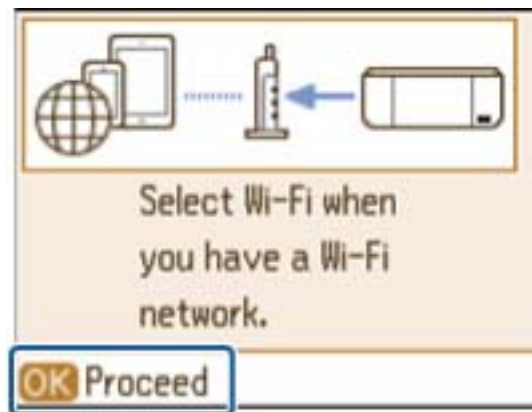


Connecting the Printer to the Smart Device or Computer

2. Select **Wi-Fi (Recommended)**, and then press the OK button.



3. Press the OK button.

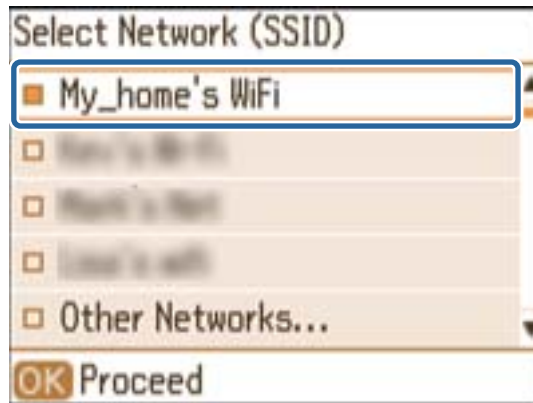


4. Select **Wi-Fi Setup Wizard**, and then press the OK button.



Connecting the Printer to the Smart Device or Computer

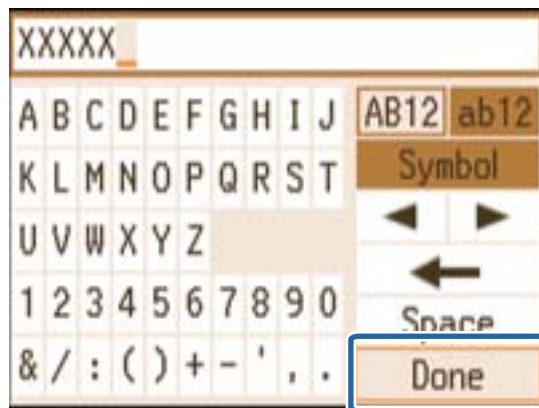
5. Select the SSID for the access point from printer's control panel, and then press the OK button.



Note:

- ❑ If the SSID you want to connect to is not displayed on the printer's control panel, select **Other Networks**, and then enter the SSID directly.
- ❑ If you do not know the SSID, check if it is written on the label of the access point. If you are using the access point with its default settings, use the SSID written on the label.

6. Enter the password, and then select **Done**. Press the OK button.

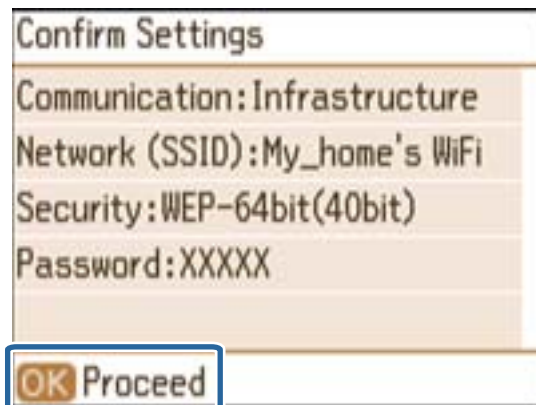


Note:

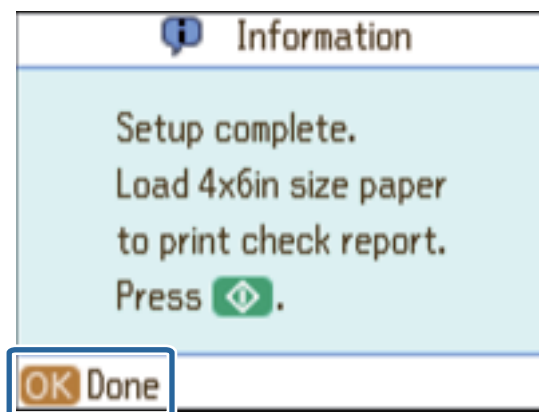
- ❑ The password is case-sensitive.
- ❑ If you do not know the password, check if it is written on the label of the access point. If you are using the access point with its default settings, use the password written on the label. The password may also be called a "Key", a "Passphrase", and so on.
- ❑ If you do not know the password for the access point, see the manual provided with the access point, or contact the person who set it up.

Connecting the Printer to the Smart Device or Computer


7. Check the settings, and then press the OK button.



8. Select whether or not you print a network connection report after finishing the settings.



Note:

If you fail to connect, load plain paper, and then print a connection report. Select **Yes**, press the OK button, and then press the  button.

Connect the smart device to the same network as the printer.

Related Information

- ➔ [“Messages and Solutions on the Network Connection Report” on page 66](#)
- ➔ [“Connecting the Smart Device to the Same Network as the Printer” on page 56](#)
- ➔ [“Adding Computers” on page 72](#)

Making Wi-Fi Settings by Push Button Setup (WPS) from the Control Panel

You can automatically set up a Wi-Fi network by pressing a button on the access point. If the following conditions are met, you can set up by using this method.

- The access point is compatible with WPS (Wi-Fi Protected Setup).
- The current Wi-Fi connection was established by pressing a button on the access point.

Note:

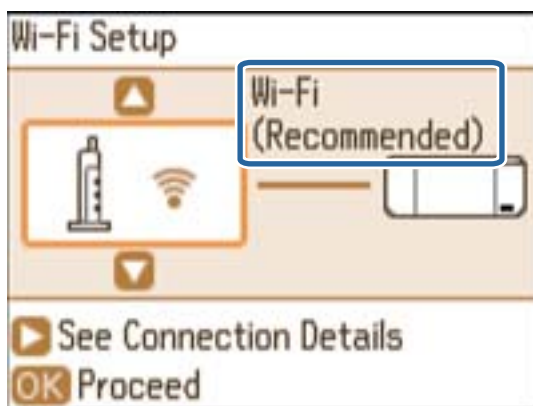
If you cannot find the button or you are setting up using the software, see the manual provided with the access point.

Connecting the Printer to the Smart Device or Computer

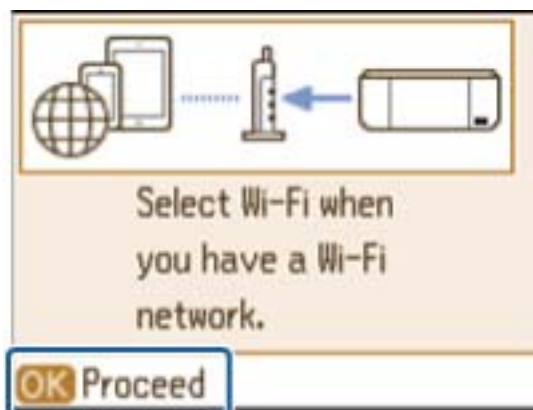
1. Select **Wi-Fi Setup** on the home screen, and then press the OK button.



2. Select **Wi-Fi (Recommended)**, and then press the OK button.

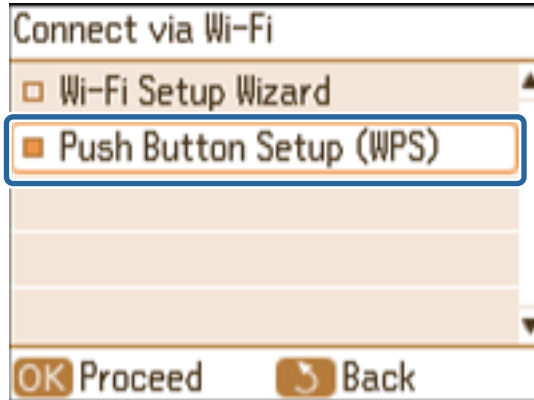


3. Press the OK button.



Connecting the Printer to the Smart Device or Computer

4. Select **Push Button Setup (WPS)**, and then press the OK button.

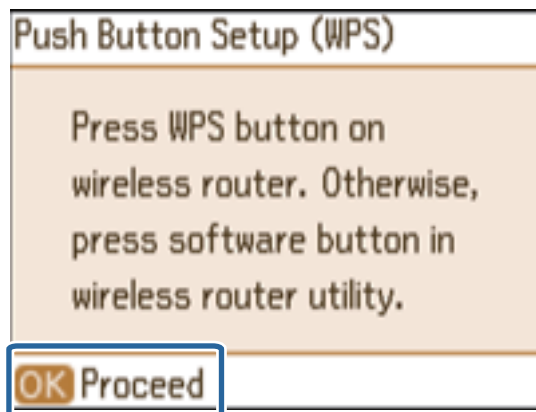


5. Hold down the [WPS] button on the access point until the security light flashes.



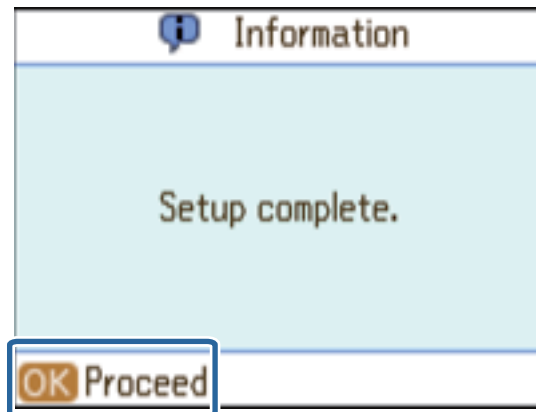
If you do not know where the [WPS] button is, or there are no buttons on the access point, see the manual provided with your access point for details.

6. Press the OK button on the printer's control panel.



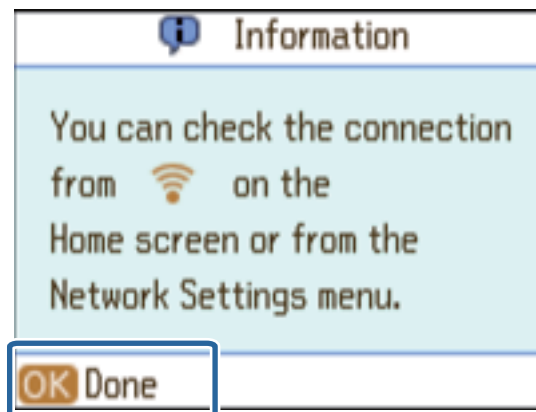
Connecting the Printer to the Smart Device or Computer

7. Press the OK button.



The screen automatically proceeds after a specific length of time if you do not press the OK button.

8. Press the OK button.



The screen automatically closes after a specific length of time if you do not press the OK button.

Note:

If an error screen is displayed, make network settings again.

Connect the smart device to the same network as the printer.

Related Information

- ➔ [“Messages and Solutions on the Network Connection Report” on page 66](#)
- ➔ [“Connecting the Smart Device to the Same Network as the Printer” on page 56](#)
- ➔ [“Adding Computers” on page 72](#)

Making Wi-Fi Settings by PIN Code Setup (WPS) from the Control Panel

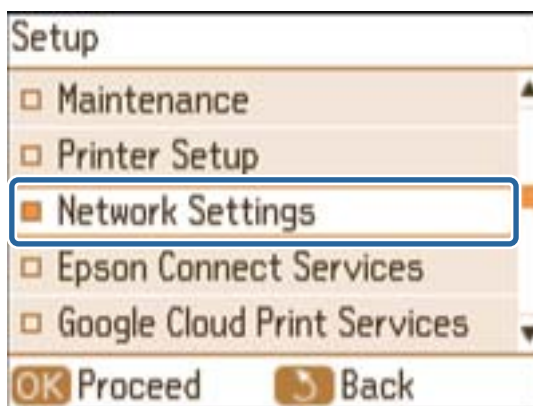
You can automatically connect to an access point by using a PIN code. You can use this method to set up if an access point is capable of WPS (Wi-Fi Protected Setup). Use a computer to enter a PIN code into the access point.

Connecting the Printer to the Smart Device or Computer

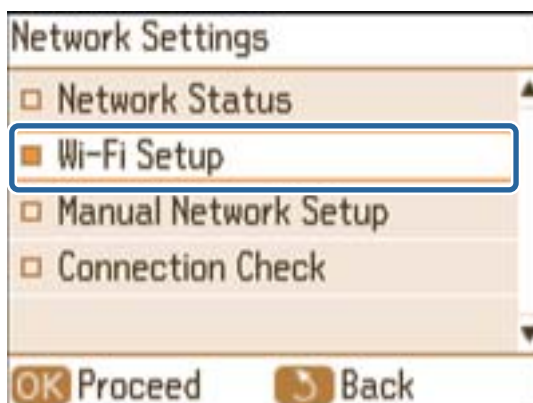
1. Select **Setup** on the home screen and then press the OK button.



2. Select **Network Settings** and then press the OK button.

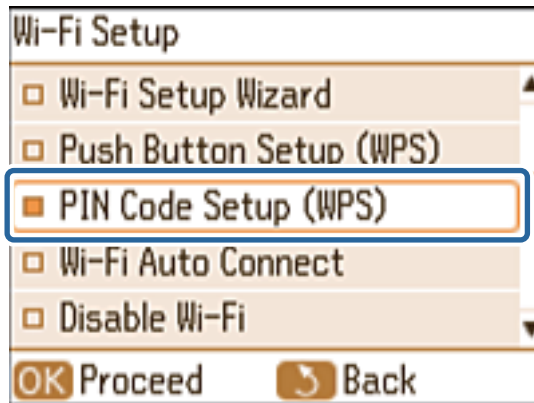


3. Select **Wi-Fi Setup** and then press the OK button.

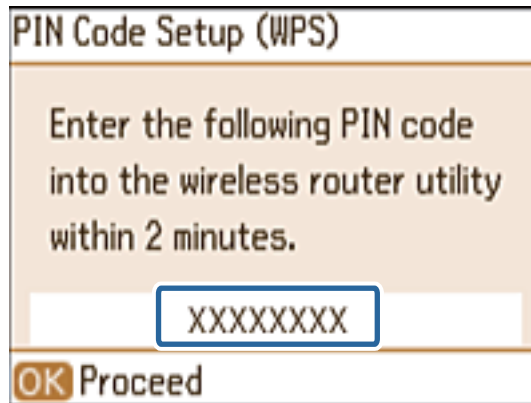


Connecting the Printer to the Smart Device or Computer

4. Select **PIN Code Setup (WPS)** and then press the OK button.



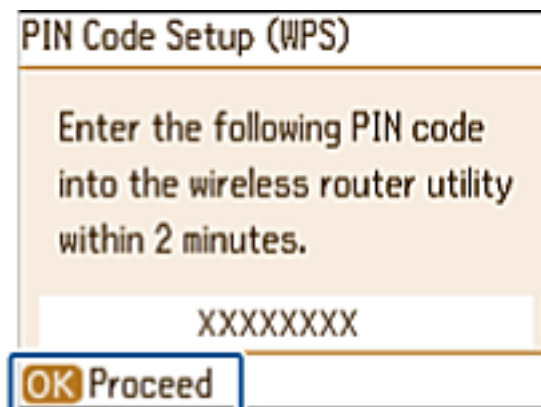
5. Use your computer to enter the PIN code (an eight digit number) displayed on the printer's control panel into the access point within two minutes.



Note:

See the manual provided with your access point for details on entering a PIN code.

6. Press the OK button.



Setup is complete when the setup completion message is displayed.

Note:

If connection fails, restart the access point, move it closer to the printer, and try again. If it still does not work, print a connection report and check the solution.

Connecting the Printer to the Smart Device or Computer

Connect the smart device to the same network as the printer.

Related Information

- ➔ [“Messages and Solutions on the Network Connection Report” on page 66](#)
- ➔ [“Connecting the Smart Device to the Same Network as the Printer” on page 56](#)
- ➔ [“Adding Computers” on page 72](#)

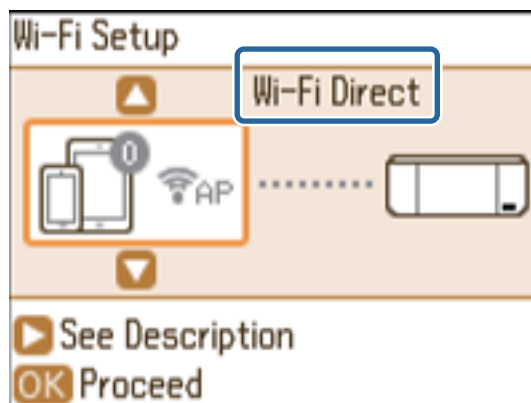
Making Wi-Fi Settings by Simple AP Mode from the Control Panel

This method allows you to connect the printer directly to devices without an access point. The printer acts as an access point.

1. Select **Wi-Fi Setup** on the home screen, and then press the OK button.

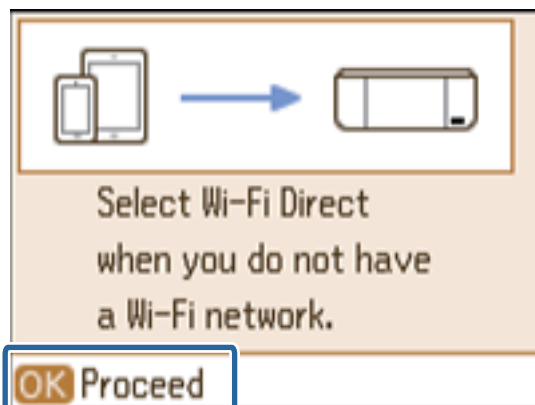


2. Select **Wi-Fi Direct**, and then press the OK button.

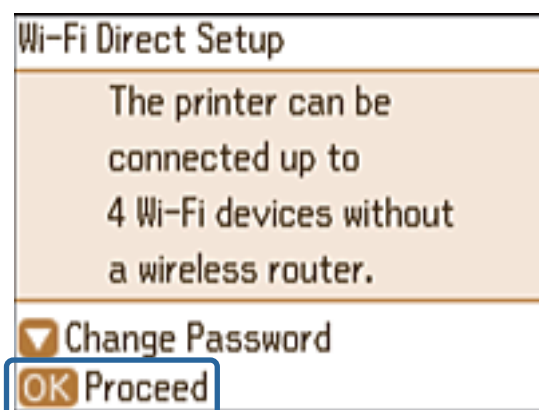


Connecting the Printer to the Smart Device or Computer

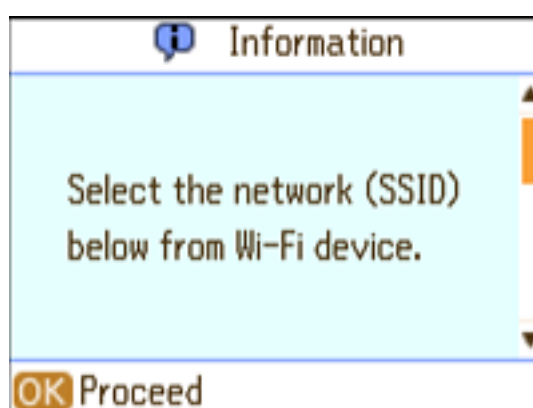
3. Press the OK button.



4. Press the OK button to start the setup.

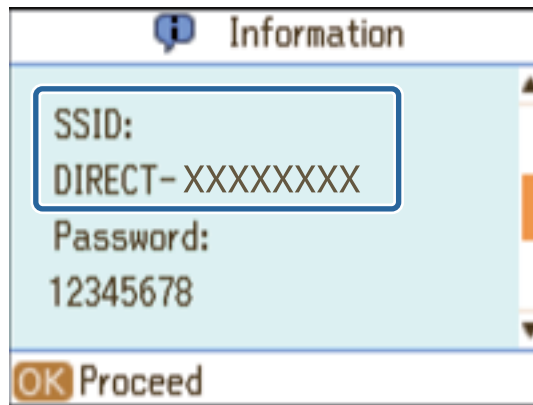


5. Press the ▼ button.

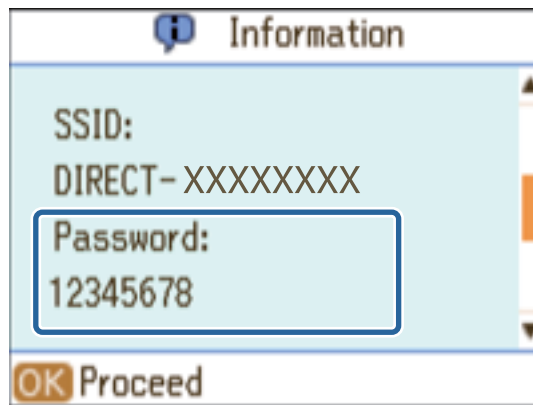


Connecting the Printer to the Smart Device or Computer

6. Check the SSID and password displayed on the printer's control panel. On the network connection screen of the smart device, select the SSID shown on the printer's control panel to connect.



7. Enter the password displayed on the printer's control panel on the smart device.



8. After the connection is established, press the OK button on the printer's control panel.



Check the connection between the printer and the smart device using Epson iPrint.

Related Information

➔ [“Making Wi-Fi Settings by Simple AP Mode from the Control Panel”](#) on page 53

Connecting the Printer to the Smart Device or Computer

Connecting the Smart Device to the Same Network as the Printer

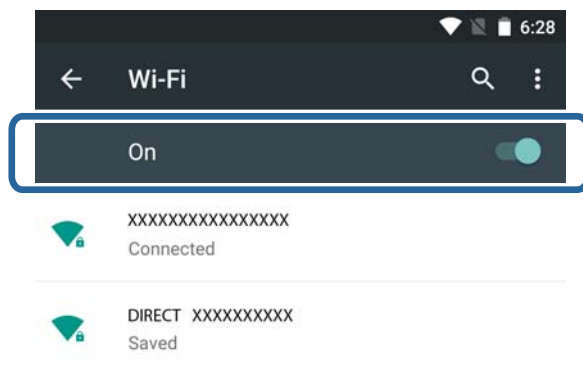
Connect a smart device to a printer that is already connected to the network by Wi-Fi.

1. Install Epson iPrint on your smart device from the following URL or QR code.

<http://ipr.to>



2. Select Wi-Fi from the settings screen on your smart device, and then enable Wi-Fi.
See the manual provided with your smart device for the operating instructions.



3. Select the same SSID as the printer, and then enter the password.
You can check the SSID that the printer has already connected to from the network status screen on the printer's control panel or by printing a network connection report. For the SSID and password, contact the person who set up the access point, or see the manual provided with the access point.
4. After establishing a connection, return to the home screen on the smart device.
You can check the connection between the printer and the smart device using Epson iPrint.

Related Information

- ➔ “Checking the Connection Using Epson iPrint” on page 62
- ➔ “Checking the Printer’s Network Status” on page 65

Procedure Outline for Wi-Fi Direct Connection (Simple AP Mode)

This connection method allows you to use the printer in Simple AP mode and connect devices by Wi-Fi. Make the following settings in order.

Connecting the Printer to the Smart Device or Computer

! Important:

- ❑ Devices directly connected to the printer cannot communicate with each other through the printer.
- ❑ Smart devices directly connected to the printer cannot access the Internet through the Wi-Fi.
- ❑ The printer can be connected by Wi-Fi and Simple AP mode simultaneously. However, if you start a network connection in Simple AP mode when the printer is connected by Wi-Fi, the Wi-Fi is temporarily disconnected.
- ❑ You cannot connect directly by Wi-Fi when the printer is connected to a computer in Ad Hoc mode.

Making Wi-Fi Settings by Simple AP Mode from the Control Panel

Make Simple AP mode settings from the printer's control panel to make the printer operating in Simple AP mode.

Connecting the Smart Device to the Printer Directly

Install Epson iPrint on your smart device, and then connect it to the printer. Epson iPrint is a free application for smart devices. This allows you to print photos and other content from the smart device.

Checking the Connection Using Epson iPrint

Check the connection between the printer and the smart device using Epson iPrint.

Related Information

- ➔ “Making Wi-Fi Settings by Simple AP Mode from the Control Panel” on page 53
- ➔ “Connecting the Smart Device to the Printer Directly by Wi-Fi” on page 57
- ➔ “Connecting the Smart Device to the Printer Directly by Wi-Fi Direct (for Android Only)” on page 59
- ➔ “Checking the Connection Using Epson iPrint” on page 62

Connecting the Smart Device to the Printer Directly by Wi-Fi

Connect the smart device to the printer in Simple AP mode.

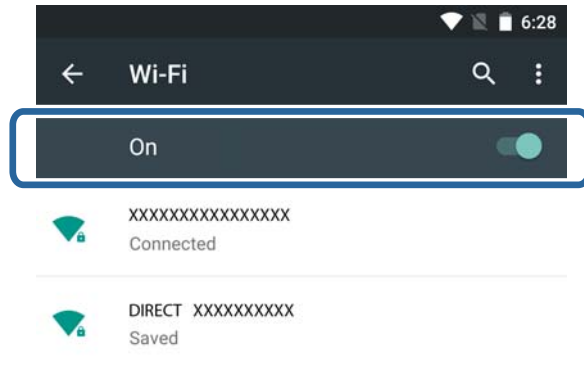
1. Install Epson iPrint on your smart device from the following URL or QR code.

<http://ipr.to>

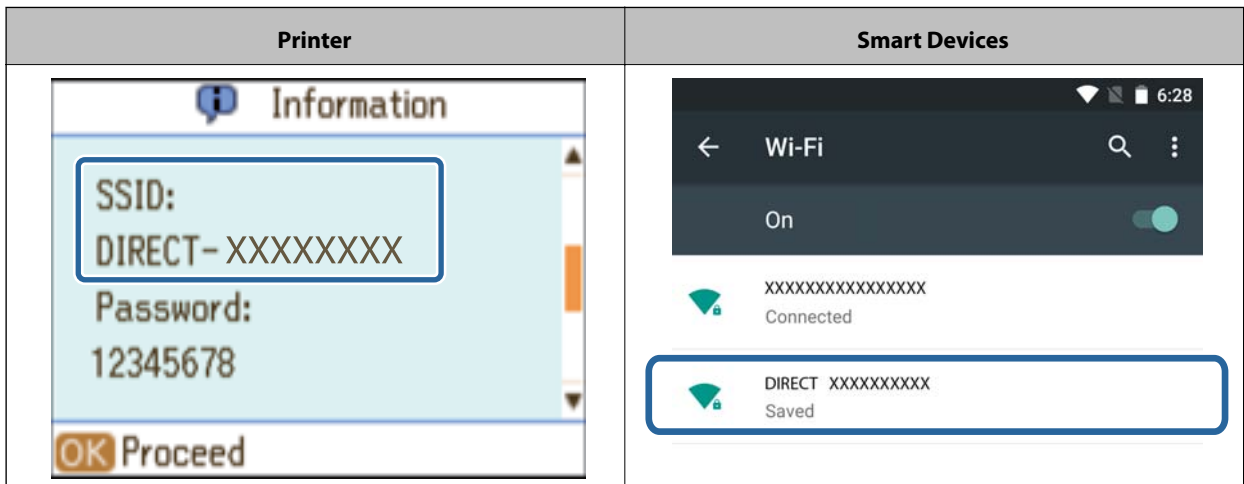


Connecting the Printer to the Smart Device or Computer

2. Select Wi-Fi from the settings screen on your smart device, and then enable Wi-Fi.
See the manual provided with your smart device for the operating instructions.



3. Select **Wi-Fi Setup** on the printer's home screen, and then press the OK button.
4. Select **Wi-Fi Direct**, and then press the OK button.
5. Press the OK button.
6. Press the ▼ button.
7. Select the same SSID that is displayed on the printer's control panel on the smart device.



8. Enter the password displayed on the printer's control panel in the smart device and connect.
9. After the connection is established, press the OK button on the printer's control panel.
You can check the connection between the printer and the smart device using Epson iPrint.

Related Information

- ➔ [“Checking the Connection Using Epson iPrint” on page 62](#)
- ➔ [“Checking the Printer's Network Status” on page 65](#)

Connecting the Printer to the Smart Device or Computer

Connecting the Smart Device to the Printer Directly by Wi-Fi Direct (for Android Only)

If you have an Android device that supports Wi-Fi Direct, you can connect the smart device to the printer in Simple AP mode by using Wi-Fi Direct mode on the Android device.

Note:

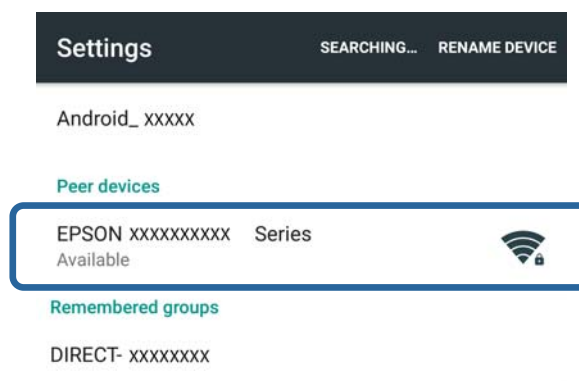
- Depending on the Android OS version or the model, you may not be able to connect the smart device to the printer by Wi-Fi Direct. The operating procedure is also different.
- If you cannot connect using the following procedure, set the printer to Wi-Fi Direct mode, and then try again.

1. Install Epson iPrint on your smart device from the following URL or QR code.

<http://ipr.to>



2. Open the Wi-Fi Direct settings screen on your smart device. Select the printer's device name, and then connect using Wi-Fi Direct.



Note:

See the manual provided with your smart device for the operating instructions.

3. Check the message on the printer's control panel, and then select whether or not to connect to the smart device.
 - To connect
Select **Approve**.
 - If you do not want to connect
Select **Reject**. If you received a connection request from an unknown device, select **Reject**.
4. Select whether or not to register the device information to the printer.
 - To register
Select **Yes**.

Connecting the Printer to the Smart Device or Computer

When you register the device after selecting **Approve**, the device connects automatically without asking you the next time it connects.

When you register the device after selecting **Reject**, the device is rejected without asking you the next time you try to connect.

- To reject
Select **No**.

When a connection request is sent from a device to the printer, the connection permission screen is displayed on the printer. Follow step 3 and 4 every time the screen is displayed.

Note:

- If you frequently receive a connection request from an unknown device, we recommend registering this device as a rejected device.
- You can delete the registered device information from **Delete Registered Device** in **Setup > Network Settings > Wi-Fi Setup > Wi-Fi Direct Setup** if you accidentally approve an unwanted device, or reject the device you want to connect. All information for rejected devices and approved devices is deleted.


You can check the connection between the printer and the smart device using Epson iPrint.

Related Information

- ➔ [“Making Wi-Fi Settings by Simple AP Mode from the Control Panel” on page 53](#)
- ➔ [“Connecting the Smart Device and Printer by Wi-Fi Direct Mode \(for Android Only\)” on page 60](#)
- ➔ [“Checking the Connection Using Epson iPrint” on page 62](#)
- ➔ [“Checking the Printer's Network Status” on page 65](#)

Connecting the Smart Device and Printer by Wi-Fi Direct Mode (for Android Only)

Connect the smart device to the printer in Wi-Fi Direct mode. The smart device needs to support Wi-Fi Direct to connect. See the manual provided with your smart device for the operating instructions.

 **Important:**

- Smart devices directly connected to the printer cannot access the Internet through the Wi-Fi.
- If you start a network connection in Wi-Fi Direct mode when the printer is connected either by Wi-Fi or Simple AP mode, the original connection is disconnected. If you disconnect Wi-Fi Direct mode, the original connection is re-established.
- Some of the functions (for example, printer firmware updates and Epson Connect setup) are disabled during Wi-Fi Direct connection.
- You cannot connect directly by Wi-Fi when the printer is connected to a computer in Ad Hoc mode.
- Use Web Config to make Wi-Fi Direct settings for the printer. To use Web Config, the IP address must be assigned to the printer, and the printer and the smart device must be connected to the same network.

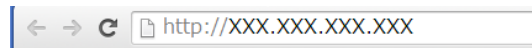
Connecting the Printer to the Smart Device or Computer

1. Install Epson iPrint on your smart device from the following URL or QR code.

<http://ipr.to>



2. Check the printer's IP address.
Check the IP address from the network status screen on the printer's control panel.
3. Run Web Config by entering the printer's IP address in the browser on your smart device.



Note:

See the manual provided with your smart device for the operating instructions.

4. Select **Advanced Settings > Services > Wi-Fi Direct**.
5. Select **Connect to the Wi-Fi Direct devices only** from **Connection Mode**.
6. Press **Next**, check the settings, and then press **OK** on the next screen.

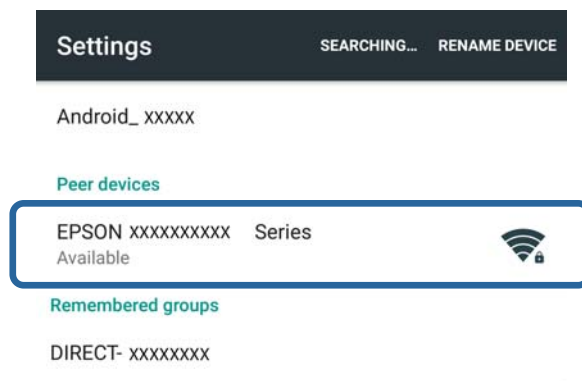
Note:

The printer is set to connect in Wi-Fi Direct mode. This setting is available until the next time you change the mode setting. You do not need to make settings every time.

7. Select **Wi-Fi Setup** on the printer's home screen, and then press the OK button.
8. Select **Wi-Fi Direct**, and then press the OK button.
9. Press the OK button after checking the message.
10. Press the OK button after checking the message.
11. Check the alert message, and then press the OK button.

Connecting the Printer to the Smart Device or Computer

12. Connect to the device name displayed on the printer by Wi-Fi Direct from the smart device.



Note:

- Wi-Fi Direct mode is disconnected if you turn the printer off or the smart device moves too far from the printer. Repeat steps 7 to 11 each time you want to use the printer.
- See the manual provided with your smart device for instructions on connecting from the device using Wi-Fi Direct.

You can check the connection between the printer and the smart device using Epson iPrint.

Related Information

- ➔ [“Checking the Connection Using Epson iPrint” on page 62](#)
- ➔ [“Checking the Printer's Network Status” on page 65](#)

Checking the Connection Using Epson iPrint

Make printer settings from a printing application and check the connection. Epson iPrint is used here as an example.

1. Run Epson iPrint.



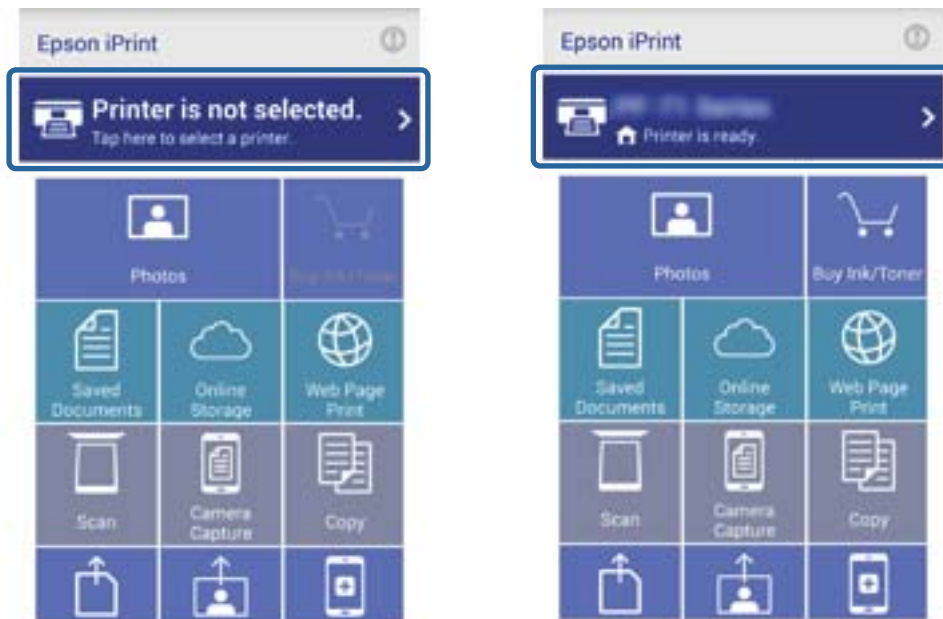
If Epson iPrint is not installed, install it on your smart device from the following URL or QR code.

<http://ipr.to>

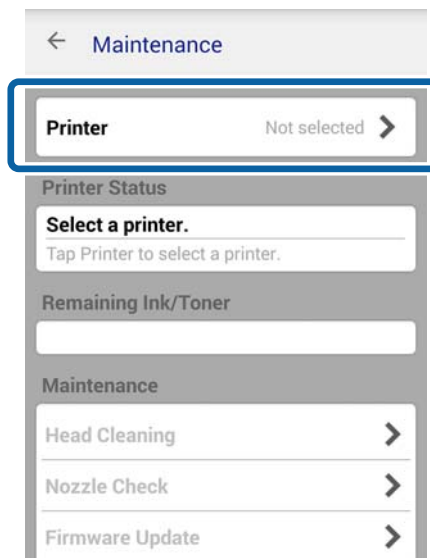


Connecting the Printer to the Smart Device or Computer

2. Tap **Printer is not selected.** at the top of the screen, or tap the printer name.



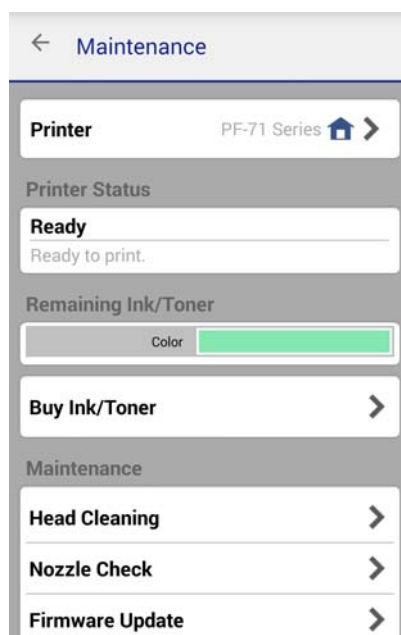
3. Tap **Printer.**



Connecting the Printer to the Smart Device or Computer

4. Select the printer name you want to connect to.

If the connection is successful, the remaining ink/toner levels are displayed.



Changing the Connection Method Between the Printer and the Smart Device

Follow the steps below to change to the connection method you want to use.

When changing to Wi-Fi, make sure that the smart device is connected to the same Wi-Fi network as the printer. See the manual provided with your smart device for instructions on making network settings.

When changing the connection method from Wi-Fi Direct mode to Simple AP mode, connect the printer and smart device in Wi-Fi Direct mode and run Web Config. Change the **Connection Mode** to **OFF** or **Simple AP** from **Advanced Settings > Services > Wi-Fi Direct**.

Related Information

- ➔ “Procedure Outline for Connecting through an Access Point” on page 43
- ➔ “Procedure Outline for Wi-Fi Direct Connection (Simple AP Mode)” on page 56
- ➔ “Connecting the Smart Device to the Printer Directly by Wi-Fi Direct (for Android Only)” on page 59
- ➔ “Connecting the Smart Device and Printer by Wi-Fi Direct Mode (for Android Only)” on page 60
- ➔ “Checking the Connection Using Epson iPrint” on page 62

Additional Connections for a Smart Device

1. Access the following website, and then enter the product's model number.

<http://epson.sn>

2. Go to **Setup**, and then run **Download** or **Connect** as necessary.

Connecting the Printer to the Smart Device or Computer

Related Information

- ➔ “Procedure Outline for Connecting through an Access Point” on page 43
- ➔ “Procedure Outline for Wi-Fi Direct Connection (Simple AP Mode)” on page 56
- ➔ “Connecting the Smart Device and Printer by Wi-Fi Direct Mode (for Android Only)” on page 60
- ➔ “Checking the Connection Using Epson iPrint” on page 62

Checking the Printer's Network Status

Checking the Network Status Using Network Icon

You can check the network connection status using the network icon on the printer's home screen. The icon changes depending on the connection type and strength of the radio wave.

Icon	Description
	Network is not set up.
	Wi-Fi is enabled. Simple AP mode is disabled.
	Wi-Fi is disabled. Simple AP mode is enabled.
	Wi-Fi and Simple AP mode are enabled.
	Wi-Fi is disabled. Wi-Fi Direct mode is enabled.
	Ad Hoc mode is enabled.

Checking the Network Status from the Control Panel

You can also view other network-related information by pressing the network menus you want to check.

1. Select **Setup** on the home screen, and then press the OK button.
2. Select **Network Settings - Network Status**.
3. To check other information, press the ◀ or ▶ button to select the menu you want to check, and then press the OK button.
 - Wi-Fi Status**
Displays the network information (Printer Name, Obtain IP Address, Default Gateway, DNS Server Setup Mode and so on) for Wi-Fi connections.
 - Wi-Fi Direct Status**
Displays the network information (Printer Name, Connection, Obtain IP Address, the number of connected devices, Default Gateway and so on) for Wi-Fi Direct connections.
 - Epson Connect Status**
Displays the registered information for Epson Connect services.
 - Google Cloud Print Status**
Displays the registered information for **Google Cloud Print Services** services and the connection status.

Connecting the Printer to the Smart Device or Computer

4. Press the **↵** button.

The printer's control panel returns to the previous screen.

Checking the Network Status by Printing Network Connection Report

1. Load paper.
2. Select **Setup** on the home screen, and then press the OK button.
3. Select **Network Settings > Connection Check**.

The connection check starts.

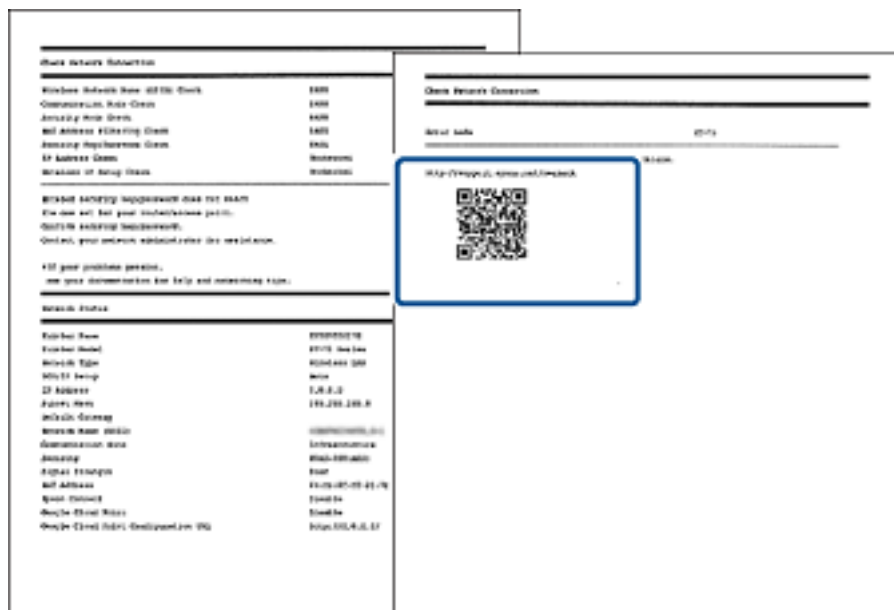
4. Press the **◇** button to print the network connection report.

If an error has occurred, check the network connection report, and then follow the printed solutions.

Messages and Solutions on the Network Connection Report

Check the messages and error codes on the network connection report.

You can check the solutions from the URL or QR code printed on the network connection report.



Connecting the Printer and a Computer

Connecting the Printer to the Computer

Connect the printer to the computer. You can make Wi-Fi settings or USB settings. You need an Internet connection to setup a printer connection from a computer. If you want to setup a connection from a computer that is not connected to the Internet, see the procedure for connecting without an Internet connection.

Connecting the Printer to the Smart Device or Computer

1. Access the following website, and then enter the product's model number.

<http://epson.sn>

2. Go to **Setup**, and follow the on-screen instructions.

When you have finished setting up the printer, download the software for making settings. Double-click the file you downloaded to start the setup.

Select the connection method, and then follow the on-screen instructions to make the settings.

Related Information

➔ [“If the Computer does not have an Internet Connection \(for Windows only\)” on page 67](#)

If the Computer does not have an Internet Connection (for Windows only)

Download the software for making settings from a computer that is connected to the Internet, and then save the data to a USB flash drive and so on. Next, start the connection setup procedure from the computer you want to connect to.

1. Access the following website from a computer that is connected to the Internet, and then enter the product's model number.

<http://epson.sn>

2. Go to the **Support** page, and then click **Download** from **Save Software (Windows)**.

3. Copy the file you have downloaded to a USB flash drive and so on.

4. Connect the USB flash drive to the computer you want to connect to the printer, and then double-click the file you copied to run the software.

Follow the on-screen instructions.

Changing a Connection Method Between the Printer and a Computer

You can use a different connection method when changing the network environment or adding another network.

Replacing or Adding New Access Points

If the SSID changes due to the replacement of an access point, or an access point is added and a new network environment is established, reset the Wi-Fi settings. If the SSID changes, you can use the same setup procedure as changing the printer connection.

Related Information

➔ [“Changing the Printer Connection to Wi-Fi” on page 68](#)

Connecting the Printer to the Smart Device or Computer

Changing the Printer Connection to Wi-Fi

Changing to a Wi-Fi Connection - Windows

The following is an example of when the print port is set as EpsonNet Print.

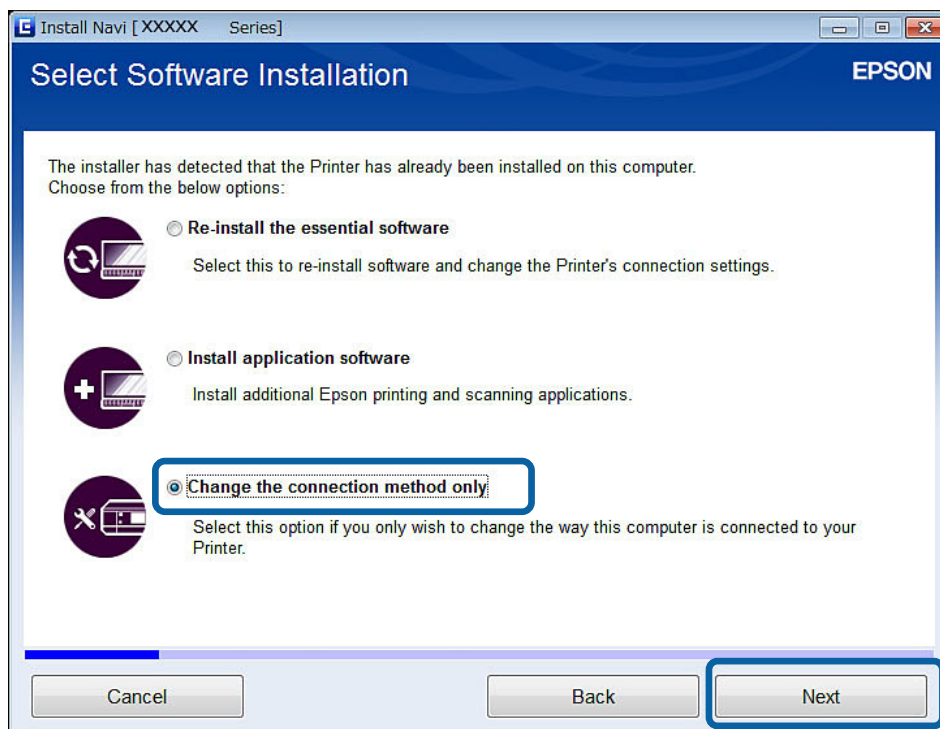
1. Connect the computer to the SSID for the access point that you want to connect to.
2. Access the following website, and then enter the product's model number.

<http://epson.sn>

Note:

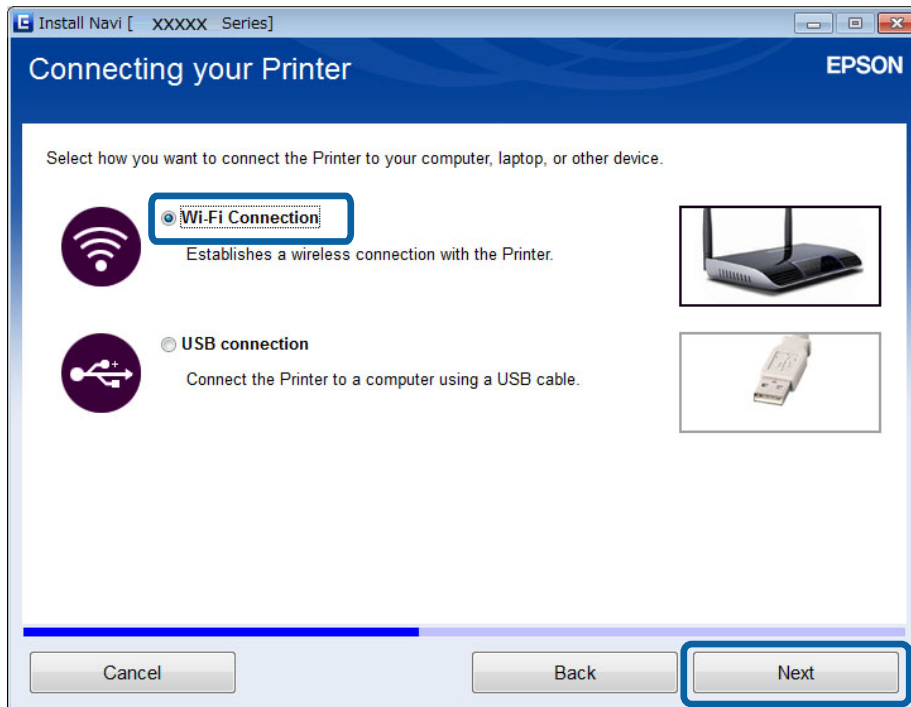
If the computer cannot connect to the Internet, see the page in this manual that explains what to do when you cannot connect to the Internet.

3. Go to **Setup**, and then download the software.
4. Run the software, and then follow the on-screen instructions.
5. Select **Change the connection method only** on the Select Software Installation screen.

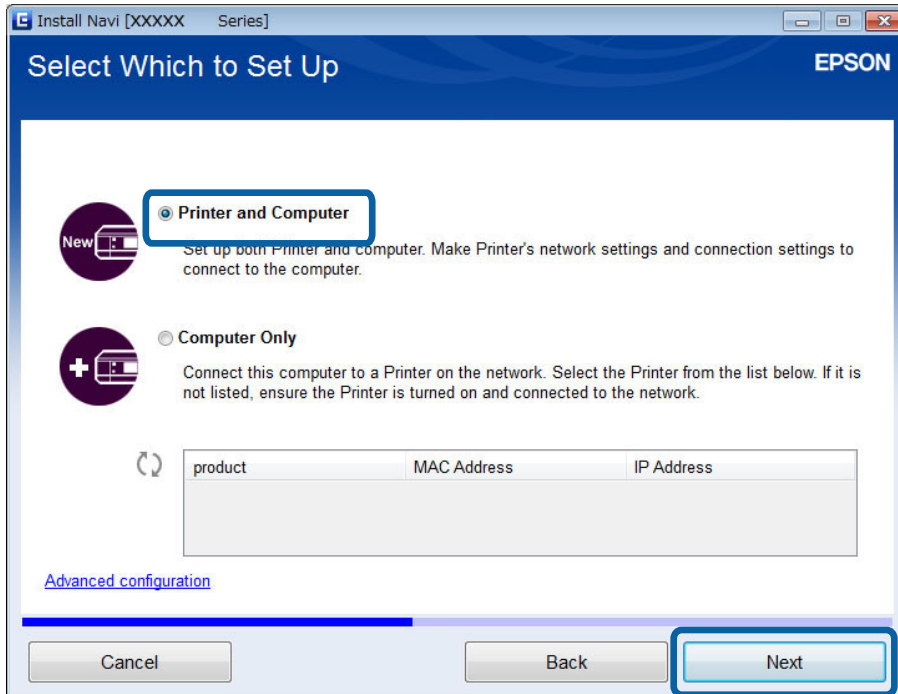


Connecting the Printer to the Smart Device or Computer

6. Select **Wi-Fi Connection** on the Connecting your Printer screen.



7. Select **Printer and Computer** on the Select Which to Set Up screen.



8. Follow the on-screen instructions.

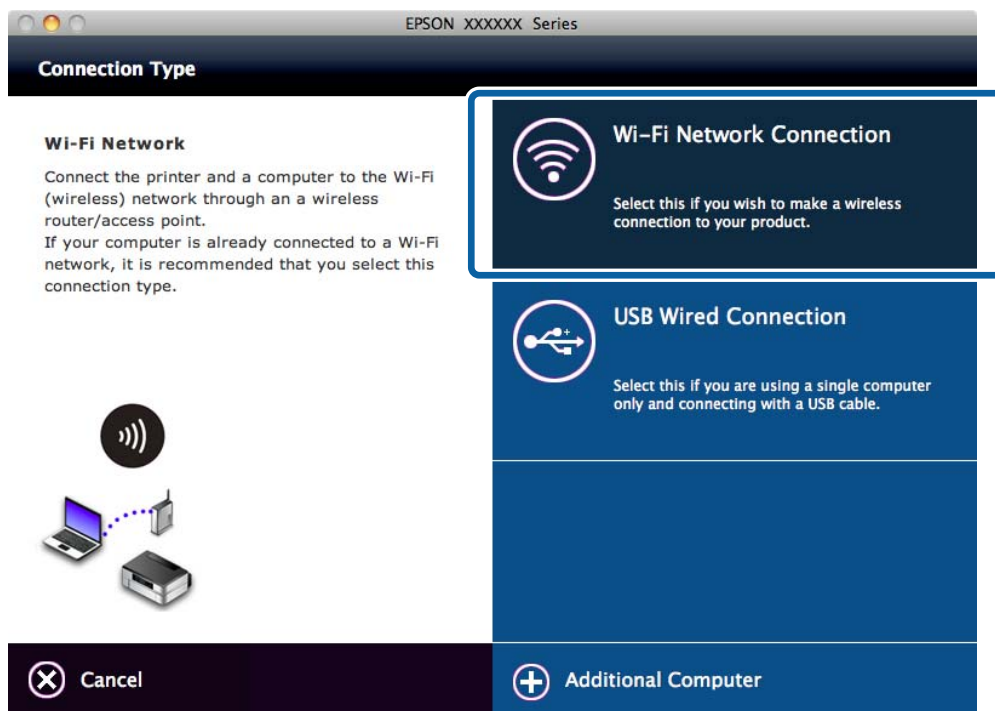
Related Information

➔ [“If the Computer does not have an Internet Connection \(for Windows only\)”](#) on page 67

Connecting the Printer to the Smart Device or Computer

Changing to a Wi-Fi Connection – Mac OS X

1. Access the following website, and then enter the product's model number.
<http://epson.sn>
2. Go to **Setup**, and then download the software.
3. Run the software, and then follow the on-screen instructions.
4. Select **Wi-Fi Network Connection** on the Connection Type screen.



5. Follow the on-screen instructions.

Adding a USB Connection to the Printer

You can connect the printer and a computer with a USB cable when the printer is connected to Wi-Fi. You can add a USB connection even when the printer is on a network.

Adding a USB Connection - Windows

1. Access the following website, and then enter the product's model number.
<http://epson.sn>

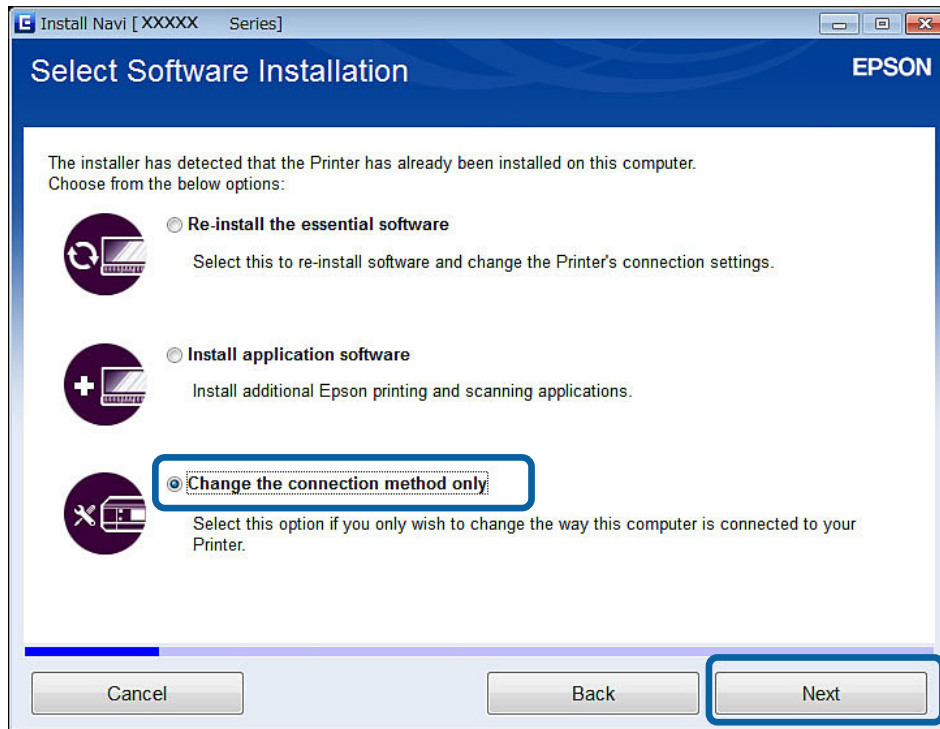
Note:

If the computer cannot connect to the Internet, see the page in this manual that explains what to do when you cannot connect to the Internet.

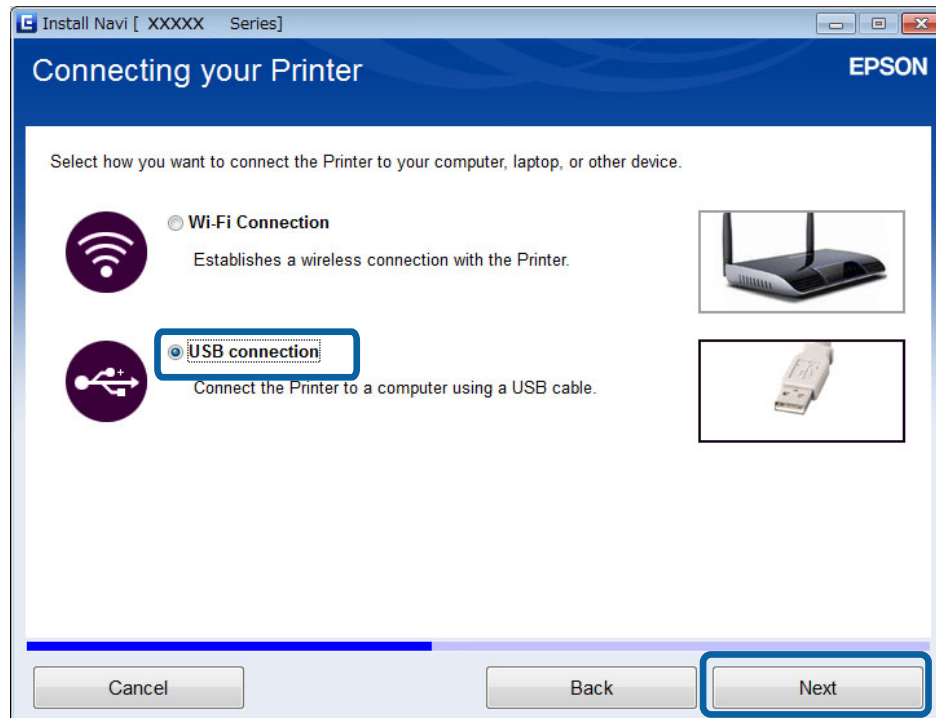
2. Go to **Setup**, and then download the software.
3. Run the software, and then follow the on-screen instructions.

Connecting the Printer to the Smart Device or Computer

4. Select **Change the connection method only** on the Select Software Installation screen.



5. Select **USB connection** on the Connecting your Printer screen.

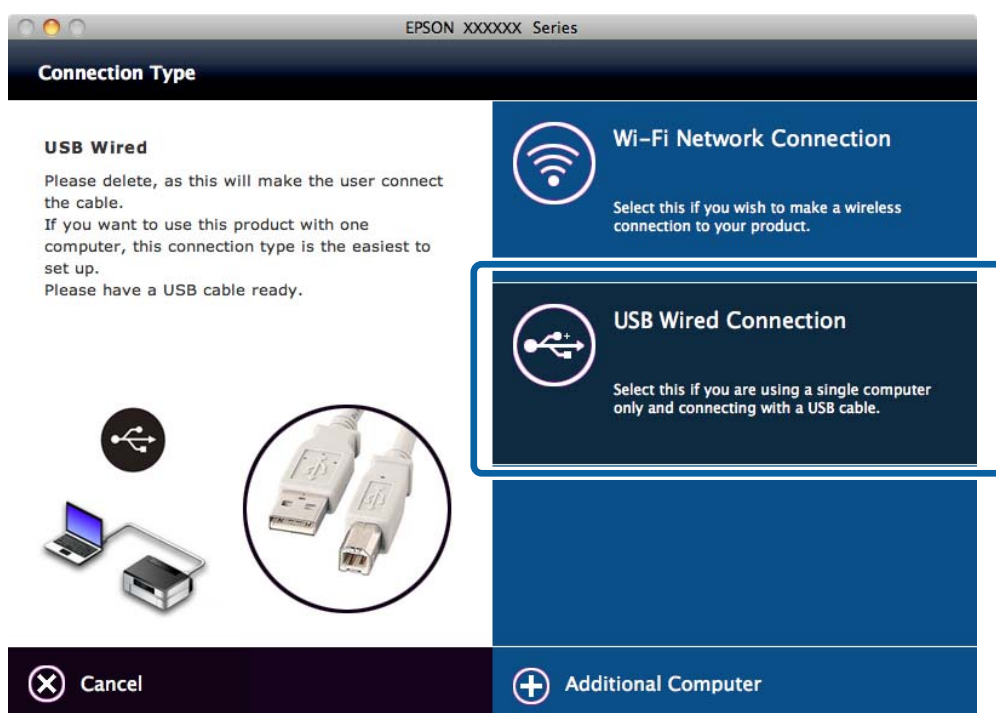


6. Follow the on-screen instructions.

Connecting the Printer to the Smart Device or Computer

Adding a USB Connection - Mac OS X

1. Access the following website, and then enter the product's model number.
<http://epson.sn>
2. Go to **Setup**, and then download the software.
3. Run the software, and then follow the on-screen instructions.
4. Select **USB Wired Connection** on the Connection Type screen.



5. Follow the on-screen instructions.

Adding Computers

You can set up the printer as a network printer that can be used from another computer.

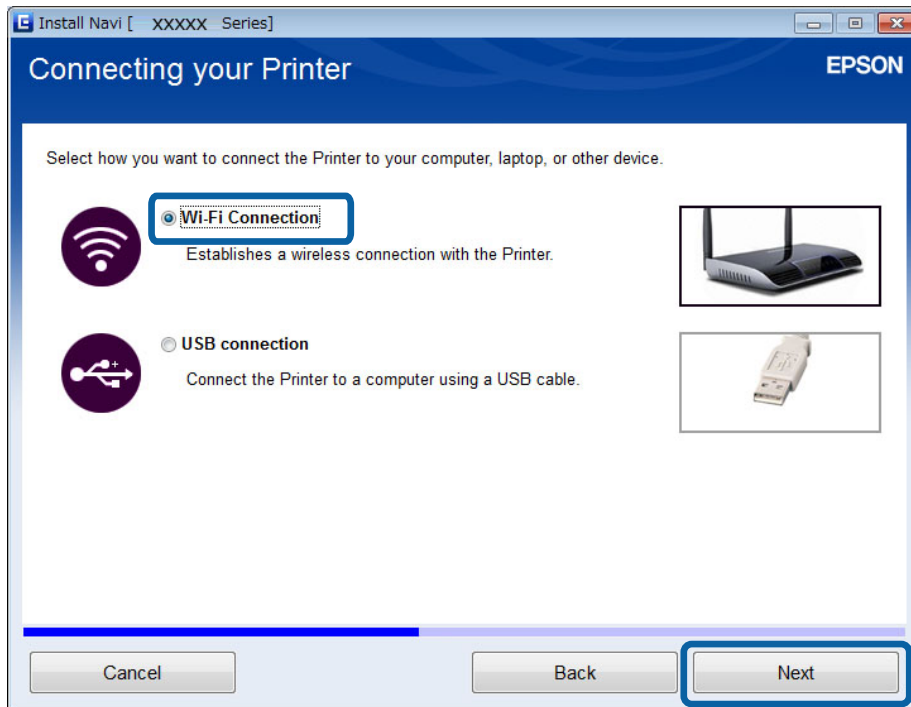
Adding Computers from the Website - Windows

Download the software from the website, and then make connection settings for adding a computer.

1. Access the following website from the computer you want to add, and then enter the product's model number.
<http://epson.sn>
2. Go to **Setup**, and then download the software.
3. Run the software, and then follow the on-screen instructions.
Follow the on-screen instructions until the screen of step 4 is displayed.

Connecting the Printer to the Smart Device or Computer

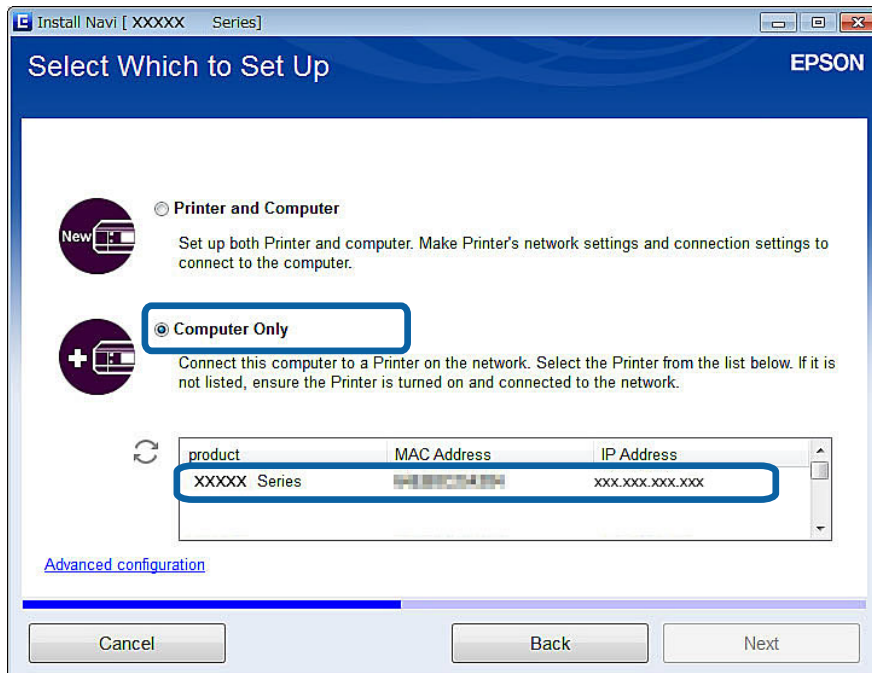
4. Select **Wi-Fi Connection** on the Connecting your Printer screen.



Note:

Select the connection according to your printer's connection setup.

5. Select **Computer Only** on the Select Which to Set Up screen, and then select the printer you want to connect to from the list.



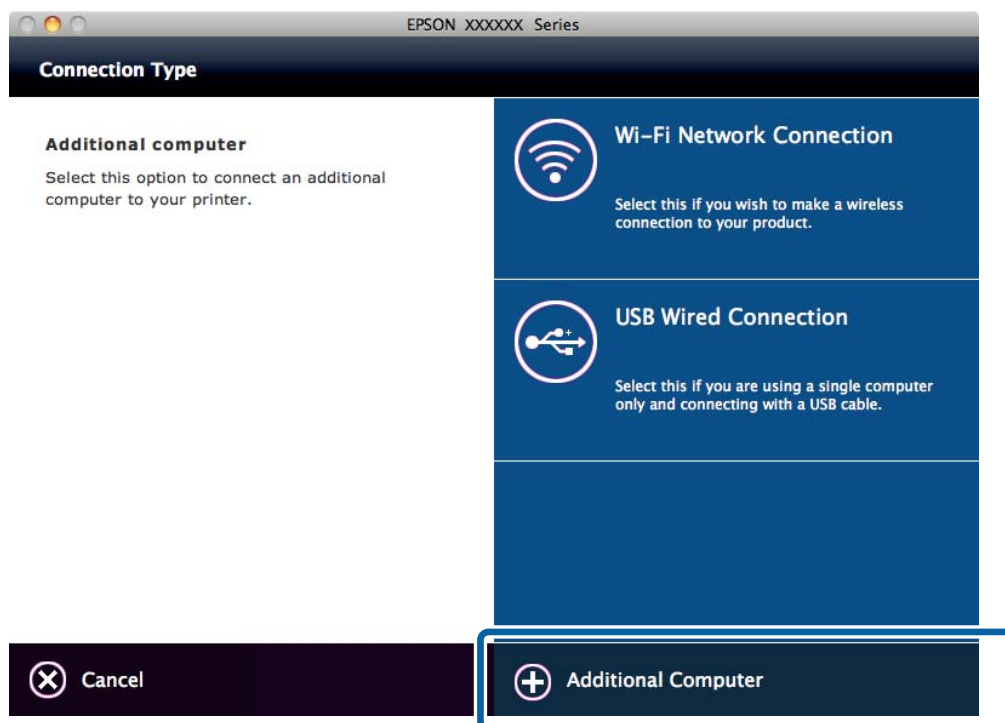
6. Follow the on-screen instructions.

Connecting the Printer to the Smart Device or Computer

Adding Computers from the Website - Mac OS X

Download the software from the website, and then make connection settings for adding a computer.

1. Access the following website from the computer you want to add, and then enter the product's model number.
<http://epson.sn>
2. Go to **Setup**, and then download the software.
3. Run the software, and then follow the on-screen instructions.
4. Select **Additional Computer** on the Connection Type screen.



5. Follow the on-screen instructions.

Disconnecting or Initializing the Network

Disabling Wi-Fi from the Printer's Control Panel

When Wi-Fi is disabled, the Wi-Fi connection is disconnected.

1. Select the **Setup** on the home screen, and then press the OK button.
2. Select **Network Settings > Wi-Fi Setup > Disable Wi-Fi**.
3. After checking the message, select **Yes** and then press the OK button.

Disconnecting Wi-Fi Direct from the Printer's Control Panel

Note:

- When Simple AP mode is disabled, all devices connected to the printer in Simple AP mode are disconnected. If you want to disconnect a specific device, disconnect from the device instead of the printer.*
- If you disconnect Wi-Fi Direct mode from the printer or from a device, the network is returned to its original setup.*

1. Select **Setup** on the home screen, and then press the OK button.
2. Select **Network Settings > Wi-Fi Setup > Wi-Fi Direct Setup > Disconnect**.
3. After checking the message, select **Yes** and then press the OK button.

Initializing the Network Settings from the Printer's Control Panel

You can restore all network settings to their defaults.

1. Select **Setup** on the home screen, and then press the OK button.
2. Select **Restore Default Settings > Network Settings**.
3. After checking the message, select **Yes** and then press the OK button.

Solving Problems

Checking the Printer Status

Checking the Printer Status - Windows

1. Access the printer driver window.
2. Click **EPSON Status Monitor 3** on the **Maintenance** tab.


Note:

- You can also check the printer status by double-clicking the printer icon on the taskbar. If the printer icon is not added to the taskbar, click **Monitoring Preferences** on the **Maintenance** tab, and then select **Register the shortcut icon to the taskbar**.
- If **EPSON Status Monitor 3** is disabled, click **Extended Settings** on the **Maintenance** tab, and then select **Enable EPSON Status Monitor 3**.

Related Information

➔ [“Windows Printer Driver” on page 33](#)

Checking Printer Status - Mac OS X

1. Select **System Preferences** from the  menu > **Printers & Scanners** (or **Print & Scan**, **Print & Fax**), and then select the printer.
2. Click **Options & Supplies** > **Utility** > **Open Printer Utility**.
3. Click **EPSON Status Monitor**.

Paper Does Not Feed Correctly

Check the following points, and then take the appropriate actions to solve the problem.

- Place the printer on a flat surface and operate in the recommended environmental conditions.
- Use paper supported by this printer. See the *Operation Guide* for a list of supported paper.
- Follow the paper handling precautions. See the *Operation Guide* for the paper handling precautions.
- Use paper with a thickness within 0.05 to 0.6 mm. Even when the paper thickness is within this range, the paper may not feed correctly depending on the hardness or transparency of the paper.
- Make sure the paper size and paper type settings match the actual paper size and paper type loaded in the printer. See the *Operation Guide* for the list of available paper sizes and paper types.

Related Information

➔ [“Environmental Specifications” on page 91](#)

Paper Jams

Load paper in the correct direction, and slide the edge guides against the edges of the paper. See the *Operation Guide* for the paper loading method.

Paper Feeds at a Slant

Load paper in the correct direction, and slide the edge guides against the edges of the paper. See the *Operation Guide* for the paper loading method.

Several Sheets of Paper are Fed at a Time

- Load one sheet of paper at a time.
- Fan the paper before loading.
- When several sheets of paper are fed at a time during manual 2-sided printing, remove any paper which is loaded in the printer before you reload the paper.

No Paper Feeds

- Do not load more than the maximum number of sheets specified for the paper. For plain paper, do not load above the line indicated by the triangle symbol on the edge guide. If the paper still does not feed, load one sheet of paper at a time.
- If you have the cleaning sheet that came with Epson genuine paper, use it to clean the roller inside the printer. See the *Operation Guide* for details.

Cannot Print from a Computer

- Connect the USB cable securely to the printer and the computer.
- If you are using a USB hub, try to connect the printer directly to the computer.
- If you cannot print over a network, see the page that describes the network connection method from the computer.
- If you are printing a large data size image, the computer may run out of memory. Print the image at a lower resolution or a smaller size.
- In Windows, click **Print Queue** on the printer driver's **Maintenance** tab, and then check the following.
 - Check if there are any paused print jobs.
Cancel printing if necessary.
 - Make sure the printer is not offline or pending.
If the printer is offline or pending, clear the offline or pending setting from the **Printer** menu.
 - Make sure the printer is selected as the default printer from the **Printer** menu (there should be a check mark on the menu item).
If the printer is not selected as the default printer, set it as the default printer.
 - Make sure the printer port is selected correctly in **Property** > **Port** from the **Printer** menu as follows.
Select "**USBXXX**" for a USB connection, or "**EpsonNet Print Port**" for a network connection.

Solving Problems

- ❑ In Mac OS X, make sure the printer status is not **Pause**.

Select **System Preferences** from the  menu > **Printers & Scanners** (or **Print & Scan**, **Print & Fax**), and then double-click the printer. If the printer is paused, click **Resume** (or **Resume Printer**).

- ❑ Install essential software. Run **Epson Software Updater** from **All Programs** > **Epson Software**. Check the software you want to install, and then click install.
- ❑ Connection settings between the printer and the computer have not been completed. You can make settings automatically by using the installer. Access the following website, enter the printer's model number, and then go to **Setup**.

<http://epson.sn>

Related Information

- ➔ [“Installing Applications” on page 41](#)
- ➔ [“Canceling Printing” on page 28](#)

Cannot Make Network Connection Settings

- ❑ Turn off the devices you want to connect to the network. Wait for about 10 seconds, and then turn on the devices in the following order; access point, computer or smart device, and then printer. Move the printer and computer or smart device closer to the access point to help with radio wave communication, and then try to make network settings again.
- ❑ Select **Setup** > **Network Settings** > **Connection Check**, and then print the network connection report. If the report shows that the network connection failed, access the website from the QR code or URL on the network connection report, and then solve the problem.

Related Information

- ➔ [“Cannot Connect to the Network Even Though the Network Connection Report Does Not Show Any Problems” on page 78](#)

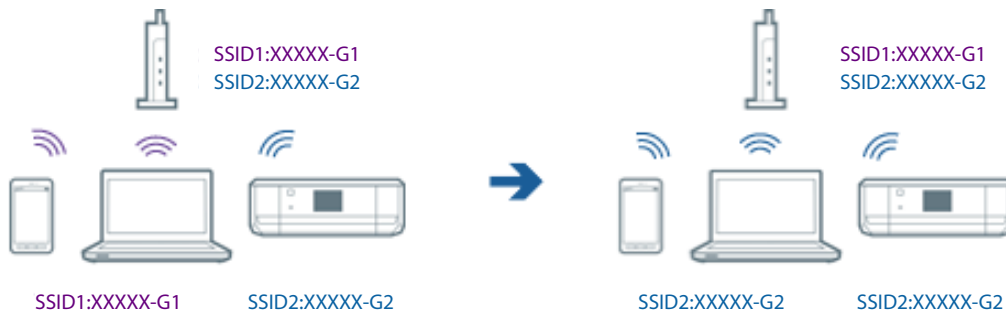
Cannot Connect to the Network Even Though the Network Connection Report Does Not Show Any Problems

- ❑ When you are using multiple access points at the same time, you may not be able to use the printer from the computer or smart device depending on the settings of the access points. Connect the computer or smart device to the same access point as the printer.

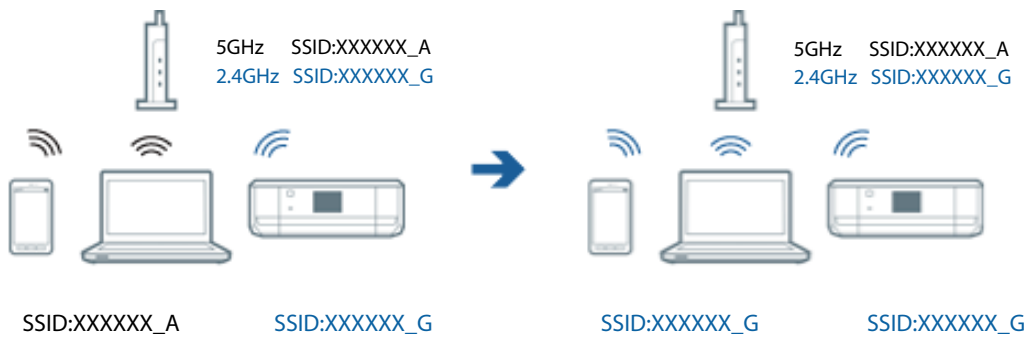


Solving Problems

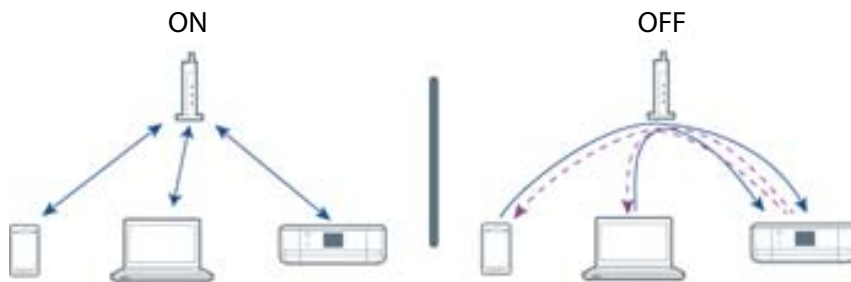
- ❑ You may not be able to connect to the access point when the access point has multiple SSIDs and devices are connected to different SSIDs on the same access point. Connect the computer or smart device to the same SSID as the printer.



- ❑ An access point that is compliant with both IEEE802.11a and IEEE802.11g has SSIDs of 2.4 GHz and 5 GHz. If you connect the computer or smart device to a 5 GHz SSID, you may not be able to connect to the printer because the printer only supports communication over 2.4 GHz. Connect the computer or smart device to the same SSID as the printer.



- ❑ Most access points have a privacy separator feature that blocks the communication from unauthorized devices. If you cannot connect to the network even if the devices and access point are connected to the same SSID, disable the privacy separator on the access point. See the manual provided with the access point for details.



Related Information

- ➔ [“Checking the SSID Connected to the Printer” on page 80](#)
- ➔ [“Checking the SSID for the Computer” on page 80](#)

Solving Problems

Checking the SSID Connected to the Printer

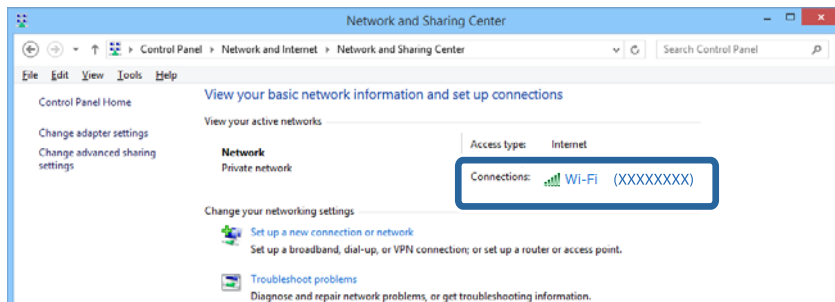
Select **Setup > Network Settings > Network Status**. SSIDs are displayed on each Wi-Fi network and Wi-Fi Direct network.



Checking the SSID for the Computer

Windows

Select **Control Panel > Network and Internet > Network and Sharing Center**.



Mac OS X

Click the Wi-Fi icon at the top of the computer screen. A list of SSIDs is displayed and the connected SSID is indicated with a check mark.



Suddenly the Printer Cannot Print over a Network Connection

- ❑ When you have changed your access point or provider, try making network settings for the printer again. Connect the computer or smart device to the same SSID as the printer.
- ❑ Turn off the devices you want to connect to the network. Wait for about 10 seconds, and then turn on the devices in the following order; access point, computer or smart device, and then printer. Move the printer and computer or smart device closer to the access point to help with radio wave communication, and then try to make network settings again.
- ❑ In Windows, click **Print Queue** on the printer driver's **Maintenance** tab, and then check the following.
 - ❑ Check if there are any paused print jobs. Cancel printing if necessary.
 - ❑ Make sure the printer is not offline or pending. If the printer is offline or pending, clear the offline or pending setting from the **Printer** menu.
 - ❑ Make sure the printer is selected as the default printer from the **Printer** menu (there should be a check mark on the menu item).
If the printer is not selected as the default printer, set it as the default printer.
 - ❑ Check if the selected port is correct in **Printer properties > Port**
- ❑ Select **Setup > Network Settings > Connection Check**, and then print the network connection report. If the report shows that the network connection failed, access the website from the QR code or URL on the network connection report, and then solve the problem.
- ❑ Try accessing any website from your computer to make sure that your computer's network settings are correct. If you cannot access any websites, there is a problem on the computer. See the manual provided with your computer for more details.

Related Information

- ➔ [“Checking the SSID Connected to the Printer” on page 80](#)
- ➔ [“Checking the SSID for the Computer” on page 80](#)
- ➔ [“Cannot Connect to the Network Even Though the Network Connection Report Does Not Show Any Problems” on page 78](#)

Suddenly the Printer Cannot Print Using a USB Connection

- ❑ Disconnect the USB cable from the computer. Right-click on the printer icon displayed on the computer, and then select **Remove Device**. Next, connect the USB cable to the computer and try a test print. If printing is possible, the setup is complete.
- ❑ Follow the steps in the paper manual bundled with the printer to setup the printer again.

Cannot Use AirPrint

- ❑ In the **Setup > Printer Setup > Paper Source Setting** menu on the control panel, enable **Paper Configuration**.
- ❑ Enable the AirPrint setting on Web Config.

Related Information

➔ [“Web Config” on page 31](#)

Printout Problems

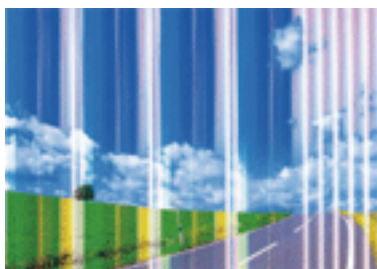
Nothing or a Very Faint Image is Printed

If you have not used the printer for a long time, the print head nozzles may be clogged and ink drops may not be discharged. Perform a nozzle check, and then clean the print head if any of the print head nozzles are clogged.

Related Information

➔ [“Checking and Cleaning the Print Head” on page 30](#)

Printouts Become Faint, Banding, or Unexpected Colors Appear



The print head nozzles may be clogged. Perform a nozzle check to check if the print head nozzles are clogged. Clean the print head if any of the print head nozzles are clogged.

Related Information

➔ [“Checking and Cleaning the Print Head” on page 30](#)

Blurry Prints, Vertical Banding, or Misalignment



enthalten alle
Aufdruck. W
5008 "Regel

Align the print head. See the *Operation Guide* for the alignment method.

Mosaic-Like Patterns in the Prints

When printing images or photos, print using high-resolution data. Images on websites are often low resolution although they look good enough on the display, and so print quality may decline.

Print Photo Quality is Poor

The paper type setting may be wrong. Select the appropriate paper type setting for the type of paper loaded in the printer. See the *Operation Guide* for the list of available paper types.

Printed Photos are Sticky

You may be printing on the wrong side of the photo paper. Make sure you are printing on the printable side.

Images or Photos are Printed in Unexpected Colors

Adjust the color and then print again. The automatic color correction feature uses the standard correction mode in **PhotoEnhance**. Try another correction mode in **PhotoEnhance** by selecting an option other than **Auto Correct** as the **Scene Correction** setting. If the problem continues, use any other color correction feature other than **PhotoEnhance**.

Related Information

➔ [“Adjusting the Print Color” on page 26](#)

The Position, Size, or Margins of the Printout Are Incorrect

- If there are partially printed characters on the paper, the paper width may not be recognized correctly and printouts may not be correct.
- Load paper in the correct direction, and slide the edge guides against the edges of the paper. See the *Operation Guide* for the paper loading method.
- Select the appropriate paper size setting.
- Due to the printer's mechanism, printouts have a margin of 10 mm around the edges when you print on A5 sized paper.
- Adjust the margin setting in the application so that it falls within the printable area.

Related Information

➔ [“Printable Area” on page 87](#)

Cannot Print Without Margins

Make borderless setting in the print settings. If you select a paper type that does not support borderless printing, you cannot select **Borderless**. Select a paper type that supports borderless printing.

Related Information

➔ [“Printing Basics - Windows” on page 12](#)

Solving Problems

➔ [“Printing Basics - Mac OS X” on page 13](#)

Edges of the Image are Cropped During Borderless Printing

During borderless printing, the image is slightly enlarged and the protruding area is cropped. Select a smaller enlargement setting.

Windows

Click **Settings** next to the **Borderless** checkbox on the printer driver's **Main** tab, and then change the settings.

Mac OS X

Change the **Expansion** setting from the print dialog's **Print Settings** menu.

Paper Is Smearred or Scuffed

When horizontal banding appears or the top or bottom of the paper is smearred, load paper in the correct direction and slide the edge guides to the edges of the paper. See the *Operation Guide* for the paper loading method.

When vertical banding appears or the paper is smearred, clean the paper path. See the *Operation Guide* for the cleaning method.

Make sure that you print on the printable side of the paper.

Use paper with a thickness within 0.05 to 0.6 mm. Even when the paper thickness is within this range, the paper may be smearred or scuffed depending on the hardness of the paper.

When performing manual 2-sided printing, make sure that the ink is completely dry before reloading the paper.

Printed Characters Are Incorrect or Garbled

Connect the USB cable securely to the printer and the computer.

Cancel any paused print jobs.

Do not put the computer manually into the **Hibernate** mode or the **Sleep** mode while printing. Pages of garbled text may be printed next time you start the computer.

Related Information

➔ [“Canceling Printing” on page 28](#)

The Printed Image Is Inverted

Clear any mirror image settings in the printer driver or the application.

Windows

Clear **Mirror Image** on the printer driver's **More Options** tab.

Mac OS X

Clear **Mirror Image** from the print dialog's **Print Settings** menu.

Solving Problems

Cannot Clear the Printout Problem After Trying All Solutions

- Use paper supported by this printer. See the *Operation Guide* for a list of supported paper.
- Do not print on paper that is damp, damaged, or too old.
- If the paper is curled or the envelope is puffed up, flatten it.
- Select the paper type setting recommended in the manual supplied with the paper.
- Print using a higher quality setting.
- Do not open the inner cover during printing.
- Do not stack the paper immediately after printing.
- Dry the printouts completely before filing or displaying them. When drying the printouts, avoid direct sun light, do not use a dryer, and do not touch the printed side of paper.
- Try to use genuine Epson ink cartridges. This product is designed to adjust colors based on the use of genuine Epson ink cartridges. The use of non-genuine ink cartridges may cause print quality to decline.
- Epson recommends using the ink cartridge before the date printed on the package.
- For best results, use up ink cartridge within six months of opening the package.
- When printing images or photos, Epson recommends using genuine Epson paper rather than plain paper. Print on the printable side of the genuine Epson paper.
- When printing from a computer, try uninstalling and then reinstalling the printer driver.

Related Information

- ➔ [“Uninstalling Applications” on page 39](#)
- ➔ [“Installing Applications” on page 41](#)

Other Printing Problems

Printing Is Too Slow

- Close any unnecessary applications.
- Lower the quality setting. High quality printing slows down the printing speed.

Printing Slows Down Dramatically During Continuous Printing

Printing slows down to prevent the printer mechanism from overheating and being damaged. However, you can continue printing. To return to normal printing speed, leave the printer idle for at least 60 minutes. Printing speed does not return to normal if the power is off.

Cannot Print Microsoft Word Files (.doc) Correctly

If you want to print A4 size Microsoft Word documents (.doc) at A5 size, access the printer driver from the control panel, and then set to reduce automatically to A5 size.

1. Access the printer driver window from the control panel.
 - Windows 8.1/Windows 8

Solving Problems

Select **Desktop > Settings > Control Panel > View devices and printers** in **Hardware and Sound**. Right-click on your printer, or press and hold it and then select **Printing preferences**.

Windows 7

Click the start button, and select **Control Panel > View devices and printers** in **Hardware and Sound**. Right-click on your printer and select **Printing preferences**.

Windows Vista

Click the start button, and select **Control Panel > Printers** in **Hardware and Sound**. Right-click on your printer and select **Printing preferences**.

Windows XP

Click the start button, and select **Control Panel > Printers and Other Hardware > Printers and Faxes**. Right-click on your printer and select **Printing preferences**.

2. Select A4 size as the **Document Size** setting.
3. Select A5 size as the **Output Paper Size** on the screen displayed, and then click **OK**.
4. Click **OK** to close the window.
5. Open the file you want to print.


The following steps are the same as for basic printing. Make the print settings in the printer driver before printing. Do not clear the **Reduce/Enlarge Document** setting on the **More Options** tab.

Related Information

➔ [“Printing Basics - Windows” on page 12](#)

Cannot Cancel Printing from a Computer Running Mac OS X v10.6.8

If you want to stop printing from your computer, make the following settings.

Run Web Config, and then select **Port9100** as the **Top Priority Protocol** setting in **AirPrint Setup**. Select **System Preferences** from the  menu > **Printers & Scanners** (or **Print & Scan**, **Print & Fax**), remove the printer, and then add the printer again.

Related Information

➔ [“Web Config” on page 31](#)

Other Problems

Slight Electric Shock when Touching the Printer

If many peripherals are connected to the computer, you may feel a slight electric shock when touching the printer. Install a ground wire to the computer that is connected to the printer.

Application Is Blocked by a Firewall (for Windows Only)

Add the application to the Windows Firewall allowed program in security settings on the **Control Panel**.

Appendix

Technical Specifications

Printer Specifications

Print Head Nozzle Placement	Black ink nozzles: 180 Color ink nozzles: 180 for each color		
Weight of Paper*	0.05 to 0.6 mm (0.002 to 0.02 in.)		
	Plain Paper	Basis weight	64 to 90 g/m ² (17 to 24 lb)
		Thickness	0.08 to 0.11 mm (0.003 to 0.004 in.)
Envelopes	Envelope #10, DL, C6: 75 to 90 g/m ² (20 to 24 lb)		

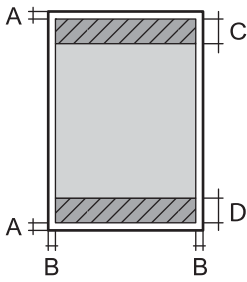
* Even when the paper thickness is within this range, the paper may not feed correctly or you may not be able to print correctly depending on the hardness or transparency of the paper.

Printable Area

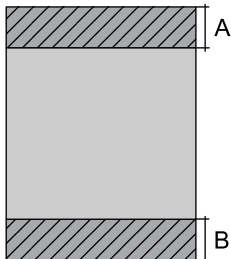
Printable Area for Single Sheets

Print quality may decline in the shaded areas due to the printer's mechanism.

Normal printing

	A	3.0 mm (0.12 in.)
	B	Smaller than A5: 3.0 mm (0.12 in.) A5: 10.0 mm (0.39 in.)
	C	37.0 mm (1.46 in.)
	D	39.0 mm (1.54 in.)

Borderless printing

	A	40.0 mm (1.57 in.)
	B	42.0 mm (1.65 in.)

Appendix

Printable Area for Envelopes

Print quality may decline in the shaded areas due to the printer's mechanism.

	A	3.0 mm (0.12 in.)
	B	5.0 mm (0.20 in.)
	C	18.0 mm (0.71 in.)
	D	37.0 mm (1.46 in.)

Interface Specifications

For Computer	Hi-Speed USB
For External USB Devices and PictBridge	Hi-Speed USB

Wi-Fi Specifications

Standards	IEEE802.11b/g/n ^{*1}
Frequency Range	2.4 GHz
Coordination Modes	Infrastructure, Ad hoc ^{*2} , Wi-Fi Direct ^{*3*4}
Wireless Securities	WEP (64/128bit), WPA2-PSK (AES) ^{*5}

*1 Complies with either IEEE 802.11b/g/n or IEEE 802.11b/g depending on location of purchase.

*2 Not supported for IEEE 802.11n.

*3 Not supported for IEEE 802.11b.

*4 Simple AP mode is compatible with Wi-Fi connection (infrastructure).

*5 Complies with WPA2 standards with support for WPA/WPA2 Personal.

Security Protocol

SSL/TLS	HTTPS Server/Client, IPPS
---------	---------------------------

Supported Third Party Services

AirPrint	Print	iOS 5 or later/Mac OS X v10.7.x or later
Google Cloud Print		

External Storage Device Specifications

Supported Memory Card Specifications

Compatible Memory Cards	Maximum Capacities
miniSD*	2 GB
miniSDHC*	32 GB
microSD*	2 GB
microSDHC*	32 GB
microSDXC*	64 GB
SD	2 GB
SDHC	32 GB
SDXC	64 GB

* Attach an adapter to fit the memory card slot. Otherwise, the card may get stuck.

Supported memory card voltages

3.3 V type, dual voltage (3.3 V and 5V) type (supply voltage: 3.3 V)

5 V memory cards are not supported.

Maximum supply current: 200 mA

Supported External Storage Device Specifications

Compatible External Storage Devices	Maximum Capacities
CD-R Drive* ¹ DVD-R Drive* ¹ Blu-ray Drive* ¹	CD-ROM* ² /CD-R: 700 MB DVD-ROM* ² /DVD-R: 4.7 GB (CD-RW, DVD+R, DVD±RW, DVD-RAM, and Blu-ray Disc™ are not supported.)
MO Drive* ¹	1.3 GB
HDD* ¹ USB Flash Drive	2 TB (formatted in FAT, FAT32, or exFAT)

*¹ We do not recommend using external USB devices that are powered by USB. Use only external USB devices with independent AC power sources.

*² Read only.

You cannot use the following devices:

- A device that requires a dedicated driver
- A device with security settings (password, encryption, and so on)
- A device with a built-in USB hub

Appendix

Epson cannot guarantee operations for all externally connected devices.

Supported Data Specifications

File Format	JPEG with the Exif Version 2.3 standard taken by digital cameras DCF* ¹ version 1.0 or 2.0* ² compliant
Image Size	Horizontal: 80 to 10200 pixels Vertical: 80 to 10200 pixels
File Size	Less than 2 GB
Maximum Number of Files	9990* ³

*1 Design rule for Camera File system.

*2 Photo data stored in the built-in memory of a digital camera is not supported.

*3 Up to 999 files can be displayed at a time. (If the number of files exceeds 999, the files are displayed in groups.)

Note:

"?" is displayed on the LCD screen when the printer cannot recognize the image file. In this situation, if you select a multiple image layout, blank sections will be printed.

Dimensions

Dimensions	<p>Storage</p> <ul style="list-style-type: none"> <input type="checkbox"/> Width: 249 mm (9.8 in.) <input type="checkbox"/> Depth: 176 mm (6.9 in.) <input type="checkbox"/> Height: 85 mm (3.3in.) <p>Printing</p> <ul style="list-style-type: none"> <input type="checkbox"/> Width: 249 mm (9.8 in.) <input type="checkbox"/> Depth: 383 mm (15.1 in.) <input type="checkbox"/> Height: 201 mm (7.9in.)
Weight*	Approx. 1.8 kg (4.0 lb)

* Without the ink cartridges and the AC adapter.

Electrical Specifications

AC Adapter

Printer Model		AC 100 to 240 V Model	AC 220 to 240 V Model
AC Adapter Model		A461H	A462E
Input	Rated Input Current	1 A	1 A
	Rated Frequency Range	50 to 60 Hz	50 to 60 Hz

Appendix

Output	Rated Output Power Supply Voltage	DC 24 V	DC 24 V
	Rated Output Current	1 A	1 A

Printer Electrical Specifications

Printer Model		AC 100 to 240 V Model	AC 220 to 240 V Model
Rated DC Input	Rated DC Input Power Supply Voltage	DC 24 V	DC 24 V
	Rated DC Input Current	0.9 A	0.9 A
Power Consumption (with USB Connection)		Printing: Approx. 12 W Ready mode: Approx. 6 W Sleep mode: Approx. 1.5 W Power off: Approx. 0.2 W	Printing: Approx. 12 W Ready mode: Approx. 6 W Sleep mode: Approx. 1.5 W Power off: Approx. 0.2 W

Note:

- Check the label on the printer for its voltage.

Environmental Specifications

Operation	<p>Use the printer within the range shown in the following graph.</p> <p>Temperature: 10 to 35°C (50 to 95°F) Humidity: 20 to 80% RH (without condensation)</p>
Storage	<p>Temperature: -20 to 40°C (-4 to 104°F)* Humidity: 5 to 85% RH (without condensation)</p>

- * You can store for one month at 40°C (104°F).

Environmental Specifications for Ink Cartridges

Storage Temperature	-30 to 40 °C (-22 to 104 °F)*
Freezing Temperature	-16 °C (3.2 °F) Ink thaws and is usable after approximately 3 hours at 25 °C (77 °F).

- * You can store for one month at 40 °C (104 °F).

System Requirements

- Windows 8.1 (32-bit, 64-bit)/Windows 8 (32-bit, 64-bit)/Windows 7 (32-bit, 64-bit)/Windows Vista (32-bit, 64-bit)/Windows XP Professional x64 Edition/Windows XP (32-bit)
- Mac OS X v10.10.x/Mac OS X v10.9.x/Mac OS X v10.8.x/Mac OS X v10.7.x/Mac OS X v10.6.8

Note:

- Mac OS X may not support some applications and features.*
- The UNIX File System (UFS) for Mac OS X is not supported.*

Regulatory Information

Standards and Approvals for U.S. Model

Product

EMC	FCC Part 15 Subpart B Class B CAN/CSA-CEI/IEC CISPR 22 Class B
-----	---

This equipment contains the following wireless module.

Manufacturer: Askey Computer Corporation

Type: WLU6320-D69 (RoHS)

This product conforms to Part 15 of the FCC Rules and RSS-210 of the IC Rules. Epson cannot accept responsibility for any failure to satisfy the protection requirements resulting from a non-recommended modification of the product. Operation is subject to the following two conditions: (1) this device may not cause harmful interference, and (2) this device must accept any interference received, including interference that may cause undesired operation of the device.

To prevent radio interference to the licensed service, this device is intended to be operated indoors and away from windows to provide maximum shielding. Equipment (or its transmit antenna) that is installed outdoors is subject to licensing.

AC adapter

Safety	UL60950-1 CAN/CSA-C22.2 No.60950-1
EMC	FCC Part 15 Subpart B Class B CAN/CSA-CEI/IEC CISPR 22 Class B

Restrictions on Copying

Observe the following restrictions to ensure the responsible and legal use of the printer.

Copying of the following items is prohibited by law:

- Bank bills, coins, government-issued marketable securities, government bond securities, and municipal securities

Appendix

- Unused postage stamps, pre-stamped postcards, and other official postal items bearing valid postage
- Government-issued revenue stamps, and securities issued according to legal procedure

Exercise caution when copying the following items:

- Private marketable securities (stock certificates, negotiable notes, checks, etc.), monthly passes, concession tickets, etc.
- Passports, driver's licenses, warrants of fitness, road passes, food stamps, tickets, etc.

Note:

Copying these items may also be prohibited by law.

Responsible use of copyrighted materials:

Printers can be misused by improperly copying copyrighted materials. Unless acting on the advice of a knowledgeable attorney, be responsible and respectful by obtaining the permission of the copyright holder before copying published material.

Accessing a Memory Card From a Computer

When the printer is connected to a computer over a network, you can write or read data on an external storage device such as a memory card that has been inserted in the printer from a computer.



Important:

- You cannot use this feature when the printer is connected to a computer using a USB cable.
- Insert a memory card after removing write protection.
- If an image is saved to the memory card from a computer, the image and the number of photos are not refreshed on the LCD screen. Remove and insert the memory card again.

Note:

It takes a while to recognize data from a computer if a large external storage device, such as 2TB HDD, is connected.

Windows

Select an external storage device in **Computer** or **My Computer**. The data on the external storage device is displayed.

Mac OS X

Select a corresponding device icon. The data on the external storage device is displayed.

Note:

To remove an external storage device, drag and drop the device icon to the trash icon. Otherwise, data in the shared drive may not be displayed correctly when another external storage device is inserted.

Related Information

➔ [“External Storage Device Specifications” on page 89](#)

Where to Get Help

Technical Support Web Site

If you need further help, visit the Epson support website shown below. Select your country or region and go to the support section of your local Epson website. The latest drivers, FAQs, manuals, or other downloadables are also available from the site.

<http://support.epson.net/>

<http://www.epson.eu/Support> (Europe)

If your Epson product is not operating properly and you cannot solve the problem, contact Epson support services for assistance.

Contacting Epson Support

Before Contacting Epson

If your Epson product is not operating properly and you cannot solve the problem using the troubleshooting information in your product manuals, contact Epson support services for assistance. If Epson support for your area is not listed below, contact the dealer where you purchased your product.

Epson support will be able to help you much more quickly if you give them the following information:

- Product serial number
(The serial number label is usually on the back of the product.)
- Product model
- Product software version
(Click **About**, **Version Info**, or a similar button in the product software.)
- Brand and model of your computer
- Your computer operating system name and version
- Names and versions of the software applications you normally use with your product

Note:

Depending on the product, the dial list data for fax and/or network settings may be stored in the product's memory. Due to breakdown or repair of a product, data and/or settings may be lost. Epson shall not be responsible for the loss of any data, for backing up or recovering data and/or settings even during a warranty period. We recommend that you make your own backup data or take notes.

Help for Users in Hong Kong

To obtain technical support as well as other after-sales services, users are welcome to contact Epson Hong Kong Limited.

Internet Home Page

Epson Hong Kong has established a local home page in both Chinese and English on the Internet to provide users with the following information:

- Product information
- Answers to Frequently Asked Questions (FAQs)

Appendix

- Latest versions of Epson product drivers

Users can access our World Wide Web home page at:

<http://www.epson.com.hk>

Technical Support Hotline

You can also contact our technical staff at the following telephone and fax numbers:

Phone: (852) 2827-8911

Fax: (852) 2827-4383