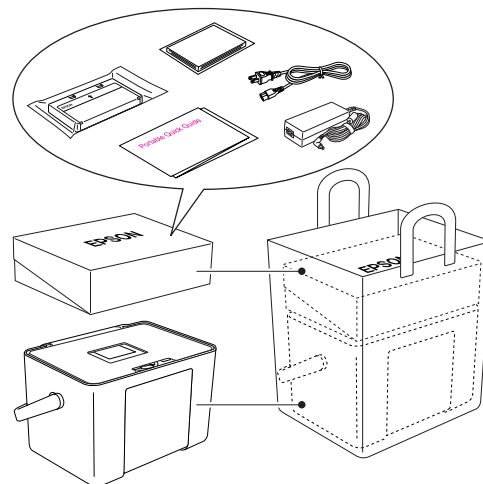


# Portable Quick Guide

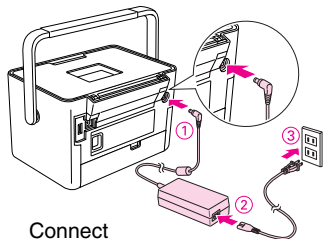
Refer to this manual for daily basic operation. When traveling with PictureMate, keep the accessories shown on the right, such as a spare cartridge, in the travel case.



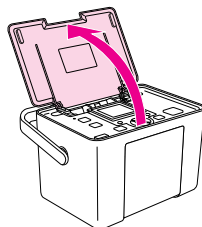
\*410690300\*



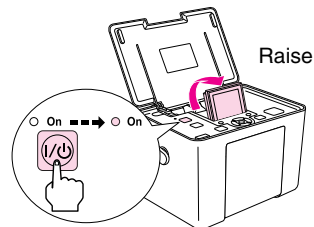
## Preparing to Print



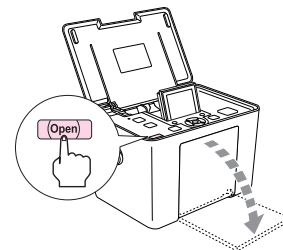
Connect



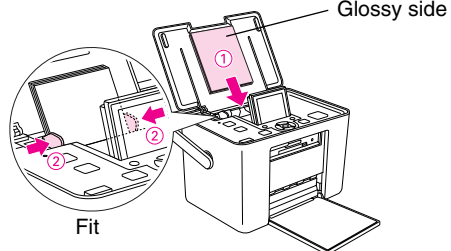
Open



Turn on

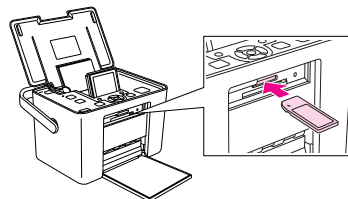


Press to open the front cover



Fit

Load paper (up to 20 sheets)



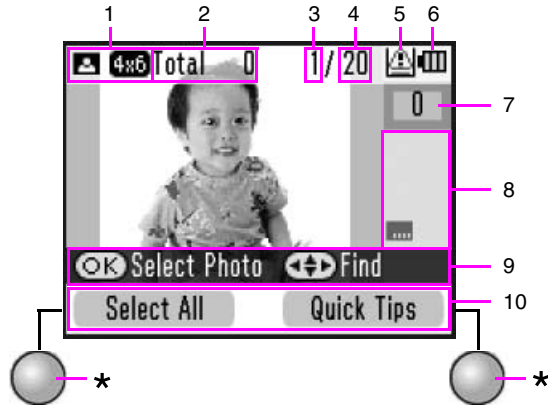
Push the card in




Light turns on



## Understanding the LCD Display

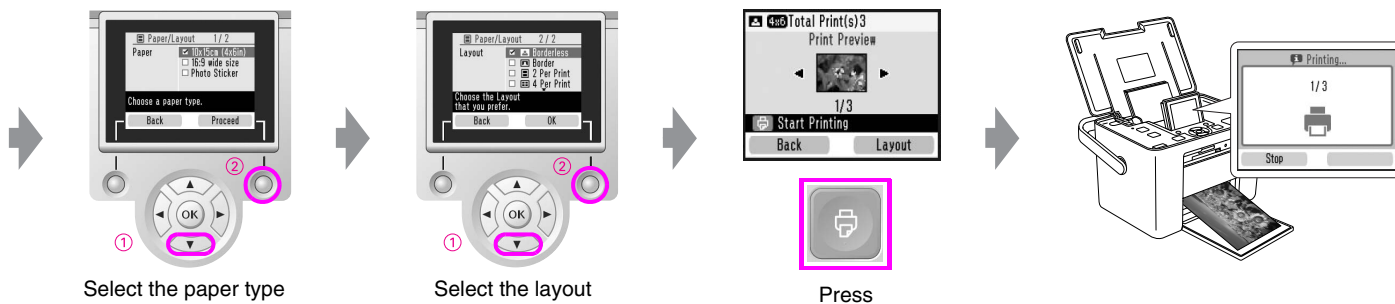
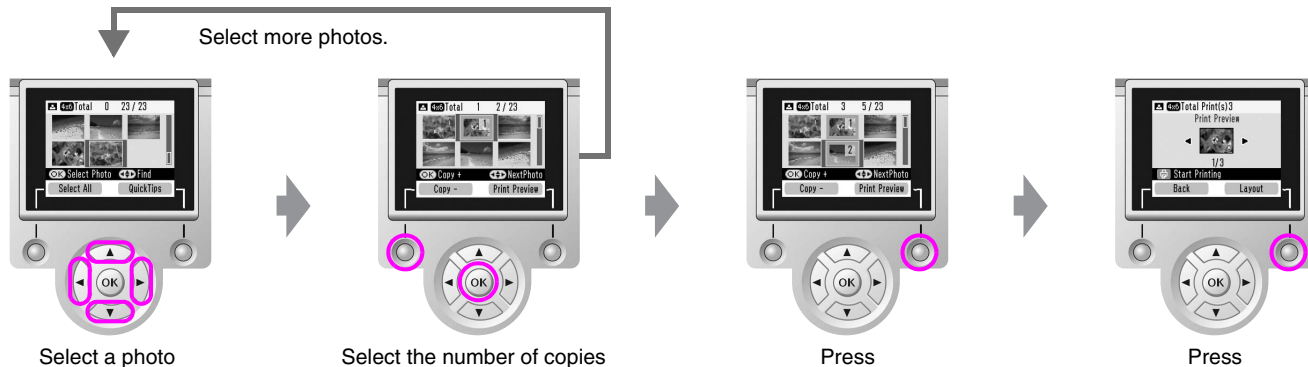


You can change the number of photos displayed by pressing the  Display button.

1	Selected paper size and layout.
2	The total number of pages to print.
3	The number of the photo in order of the date taken.
4	Total number of photos.
5	Appears when ink is low.
6	Optional battery status.
7	The number of copies for the selected photo.
8	Selected optional print settings.
9	Guidance. The icons show the buttons to press.
10	The actions assigned to the soft keys(*) for the current screen.



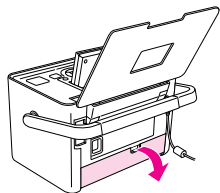
## Selecting and Printing Some Photos



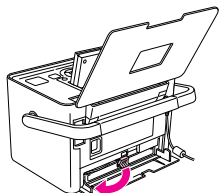


## Replacing the Photo Cartridge (T5852)

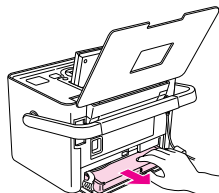
When ink is low, prepare the new photo cartridge. If the message appears to prompt you to replace the photo cartridge, follow the steps below.



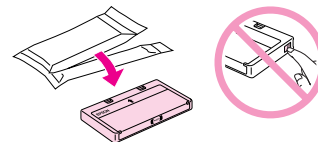
Open



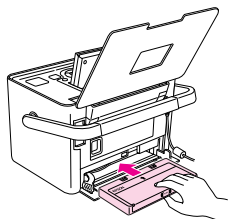
Unlock



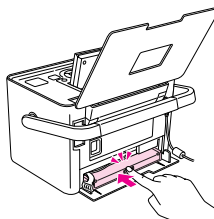
Remove



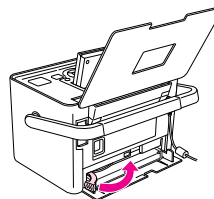
Unpack



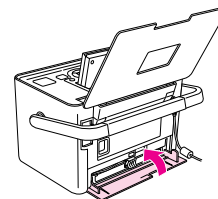
Insert



Click



Lock

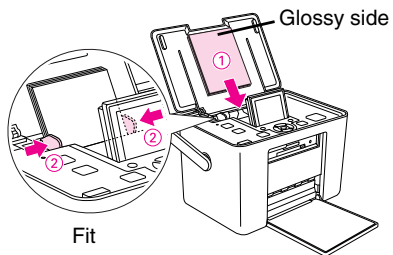


Close



## If banding appears on your photo

Follow the steps below to clean the print head nozzles.



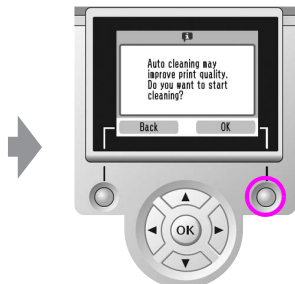
Press



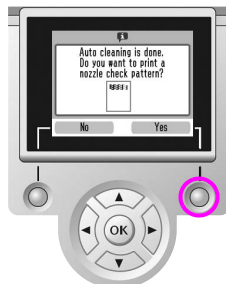
Select Maintenance



Select Auto Cleaning



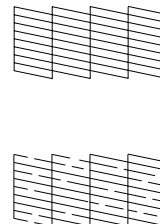
Press



Press



Press



Select Yes to finish.

Select No and repeat the cleaning about 2 times.