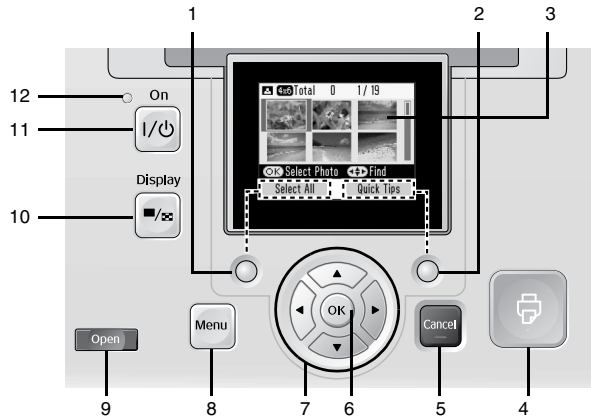




User's Guide

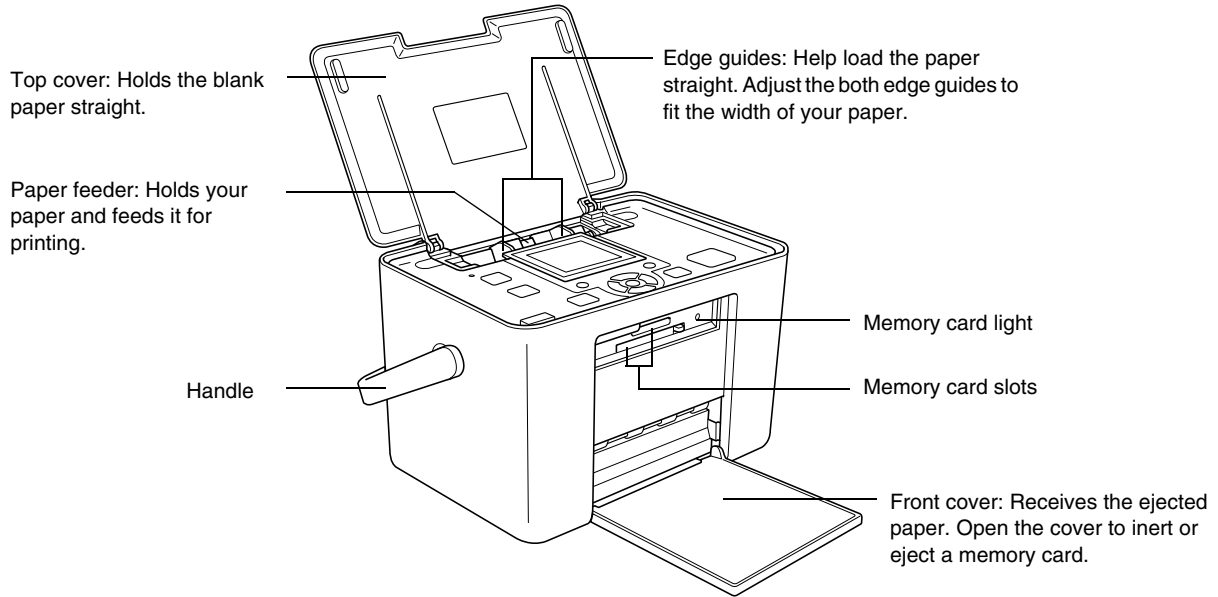
- for use without a computer -

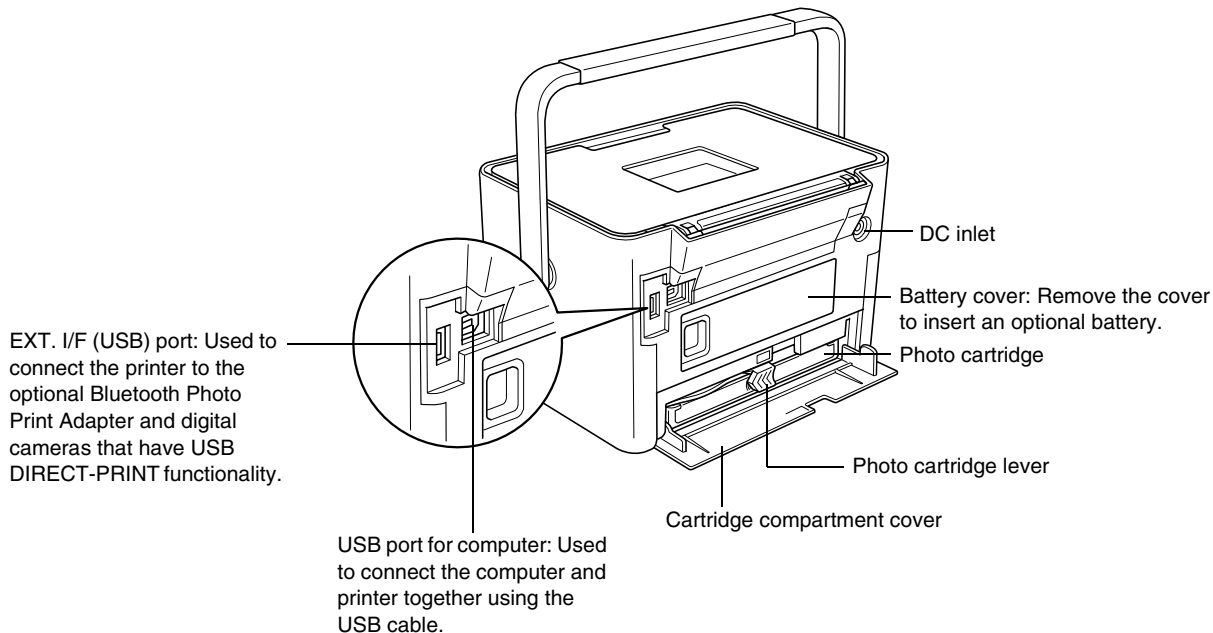
Control Panel Functions



	Parts	Function
1	Left soft key	Functions as shown in the bottom left of the LCD screen.
2	Right soft key	Functions as shown in the bottom right of the LCD screen.
3	LCD screen	Displays the printer status messages, and the panel settings.
4	Print button	Press to start printing.
5	Cancel button	Press to cancel the printing or settings.
6	OK button	Functions as shown in the LCD screen.
7	▲▼◀▶ 4-way scroll button	Press to move the cursor on the LCD screen.
8	Menu button	Press to enter the Menu mode for the print settings or maintenance options.
9	Open button	Press to open the front cover.
10	Display button	Press to change the view of the screen.
11	On/Off button	Press to turn the printer on and off.
12	Power light	On when the printer is turned on and ready.

Printer Parts





Contents

Safety Instructions

Important Safety Instructions	1
Warnings, Cautions, and Notes	9

Welcome!

A Quick Introduction to the Digital Photography Process	10
Supported Photo Formats	12
Where to Find Information	12
Panel Setting Menu List	13

Preparing to Print

Loading Paper	16
Paper Handling Instructions	18
Choosing a Photo Source	19
Inserting a Memory Card	20

Basic Photo Printing

Changing the View of Photos on the LCD Screen	23
Printing All Photos	23
Printing Selected Photos	24

Printing a Range of Photos	25
Printing Photos Searching By Date	26
Printing an Index	27
Printing on Photo Stickers	28
Printing Camera-Selected DPOF Photos	30

Printing Options

Making Paper and Print Layout Settings	31
Touching Up Your Photos (Manual/Auto)	33
Adding the Date	34
Decorating Your Photo	35
Cropping and Sizing Your Photos	36
Removing Red-eye	37
Rotating a Photo on the LCD Screen	37
Printing with P.I.F. Frames	38

Printing From an External Device

Printing From an External Drive	41
Printing From a PictBridge-Enabled Camera	43
Printing From a Bluetooth Device	45

Setting PictureMate Preferences

Set Operation Sound On or Off	50
Setting the After Printing Confirmation	50
Changing the Default Print Settings	51
Resetting All Print Settings	52

Saving Your Photos to an External Device (Backup)

Replacing the Photo Cartridge

Checking the Photo Cartridge Status	55
Replacing the Photo Cartridge	56

Transporting Your PictureMate

Maintaining PictureMate

Cleaning and Checking the Print Head Nozzles	62
Aligning the Print Head	63
Cleaning PictureMate	65

Troubleshooting

Error/Warning Messages	66
Printer Power Problems	67
Print and Noise Problems	68

Photo Quality Problems	69
Problems With Paper Feeding	70
Miscellaneous Printout Problems	71

Contacting Customer Support

Regional Customer Services	72
--------------------------------------	----

Ink, Paper, and Options

Ink and Paper	74
Options	75
Using the Optional Battery	75

Printer Specifications

Index



Photo Printer

PictureMate™ PM 250

No part of this publication may be reproduced, stored in a retrieval system, or transmitted in any form or by any means, electronic, mechanical, photocopying, recording, or otherwise, without the prior written permission of Seiko Epson Corporation. The information contained herein is designed only for use with this Epson printer. Epson is not responsible for any use of this information as applied to other printers.

Neither Seiko Epson Corporation nor its affiliates shall be liable to the purchaser of this product or third parties for damages, losses, costs, or expenses incurred by the purchaser or third parties as a result of accident, misuse, or abuse of this product or unauthorized modifications, repairs, or alterations to this product, or (excluding the U.S.) failure to strictly comply with Seiko Epson Corporation's operating and maintenance instructions.

Seiko Epson Corporation shall not be liable for any damages or problems arising from the use of any options or any consumable products other than those designated as Original Epson Products or Epson Approved Products by Seiko Epson Corporation.

Seiko Epson Corporation shall not be held liable for any damage resulting from electromagnetic interference that occurs from the use of any interface cables other than those designated as Epson Approved Products by Seiko Epson Corporation.

EPSON® is a registered trademark and PictureMate™ is a trademark of Seiko Epson Corporation.

PRINT Image Matching™ and the PRINT Image Matching logo are trademarks of Seiko Epson Corporation. Copyright©2001 Seiko Epson Corporation. All rights reserved.

USB DIRECT-PRINT™ and the USB DIRECT-PRINT logo are trademarks of Seiko Epson Corporation. Copyright©2002 Seiko Epson Corporation. All rights reserved.

Microsoft® and Windows® are registered trademarks of Microsoft Corporation.

Apple® and Macintosh® are registered trademarks of Apple Computer, Inc.

DPOF™ is a trademark of CANON INC., Eastman Kodak Company, Fuji Photo Film Co., Ltd. and Matsushita Electric Industrial Co., Ltd. The BLUETOOTH™ trademarks are owned by Bluetooth SIG, Inc., U.S.A. and licensed to Seiko Epson Corporation.

Zip® is a registered trademark of Iomega Corporation.

SDHC™ is a trademark.

Memory stick, Memory Stick Duo, Memory Stick PRO, Memory Stick PRO Duo, MagicGate Memory Stick, and MagicGate Memory Stick Duo are trademarks of Sony Corporation.

xD-Picture Card™ is a trademark of Fuji Photo Film Co., Ltd.

General Notice: Other product names used herein are for identification purposes only and may be trademarks of their respective owners. Epson disclaims any and all rights in those marks.

Copyright © 2006 Seiko Epson Corporation. All rights reserved.

Safety Instructions

Important Safety Instructions

Read all of the instructions in this section before using your printer. Also, be sure to follow all warnings and instructions marked on the printer.

When choosing a place for the printer

Observe the following when choosing a place for the printer:

- ❑ Place the printer on a flat, stable surface that extends beyond the base of the printer in all directions. If you place the printer by the wall, leave more than 10 cm between the back of the printer and the wall. The printer will not operate properly if it is tilted at an angle.
- ❑ When storing or transporting the printer, do not tilt it, stand it on its side, or turn it upside down. Otherwise, ink may leak from the cartridge.
- ❑ Leave enough space in front of the printer for the paper to be fully ejected.
- ❑ Avoid places subject to rapid changes in temperature and humidity. Also, keep the printer and the AC adapter away from direct sunlight, strong light, water, or heat sources.
- ❑ Do not leave the printer in a place subject to high temperature, such as in a car. Also, keep the printer away from direct sunlight, strong light, and heat sources. Otherwise, the printer may be damaged or ink may leak.
- ❑ Avoid places subject to dust, shock, or vibration.
- ❑ Leave enough room around the printer to allow for sufficient ventilation.
- ❑ Place the AC adapter near a wall outlet where the plug can be easily unplugged.
- ❑ Do not place or store the printer and the AC adapter outdoors.

When setting up your printer

Observe the following when setting up the printer:

- ❑ Do not block or cover the vents and openings in the printer.
 - ❑ Power supply cords should be placed to avoid abrasions, cuts, fraying, crimping, and kinking. Do not place objects on top of power-supply cords and do not allow the AC adapter or power-supply cords to be stepped on or run over. Be particularly careful to keep all power-supply cords straight at the ends and the points where they enter and leave the AC adapter.
 - ❑ Use only the power-supply cords that comes with this product. Use of another cord may result in fire or electrical shock, or injury.
 - ❑ The AC adapter model A381H is designed for use with the printer with which it was included. Do not attempt to use it with other electronic devices unless specified.
- ❑ Use only the type of power source indicated on the AC adapter's label, and always supply power directly from a standard domestic electrical outlet with the AC power cord that meets the relevant local safety standards.
 - ❑ Avoid using outlets on the same circuit as photocopiers or air control systems that regularly switch on and off.
 - ❑ Avoid using electrical outlets controlled by wall switches or automatic timers.
 - ❑ Keep the entire computer system away from potential sources of electromagnetic interference, such as loudspeakers or the base units of cordless telephones.
 - ❑ Do not use a damaged or frayed power cord and the AC adapter.
 - ❑ If you use an extension cord with the printer, make sure that the total ampere rating of the devices plugged into the extension cord does not exceed the cord's ampere rating. Also, make sure that the total ampere rating of all devices plugged into the wall outlet does not exceed the wall outlet's ampere rating.

- ❑ Never disassemble, modify, or attempt to repair the AC adapter, power cord, printer, and options by yourself except as specifically explained in the printer's guides.
- ❑ Unplug the printer, and refer servicing to qualified service personnel under the following conditions:

The power cord or plug is damaged; liquid has entered the printer or the AC adapter; the printer or the AC adapter has been dropped or the casing damaged; the printer or the AC adapter does not operate normally or exhibits a distinct change in performance. (Do not adjust controls that are not covered by the operating instructions.)
- ❑ Do not use with wet hands.
- ❑ If you plan to use the AC adapter in Germany, the building installation must be protected by a 10 or 16 amp circuit breaker to provide adequate short-circuit protection and over-current protection for this printer.

For United Kingdom, Singapore, and Hong Kong users

- ❑ Replace fuses only with fuses of the correct size and rating.

Safety requirements

Mains plug:

Use a 3-pin mains plug that is registered with the Safety Authority.

Flexible cord:

Use a double insulated flexible cord that is certified* to the relevant IEC or BS standards.

Appliance connector:

Use an appliance connector certified* to the relevant IEC320.

* certified by member of IECCE CB Scheme.

For United Kingdom users

The following safety information applies to the AC adapter.

- ❑ **Warning:** Refer to the rating plate for the voltage and check that the appliance voltage corresponds to the supply voltage.
- ❑ **Important:** The wires in the mains lead fitted to this appliance are coloured in accordance with following code: Blue - Neutral, Brown - Live

If you have to fit a plug:

- ❑ As the colours of the mains lead of the appliance may not match the coloured markings used to identify the terminals in a plug, please observe the following:

The blue wire must be connected to the terminal in the plug marked with the letter N.

The brown wire must be connected to the terminal in the plug marked with the letter L.

- ❑ If damage occurs to the plug, replace the cord set or consult a qualified electrician.

When using the printer

Observe the following when using the printer:

- ❑ If you use the printer in places where the use of electronic devices is limited, such as in airplanes or hospitals, follow all instructions in those places.
- ❑ Do not insert objects through the slots in the printer.
- ❑ Take care not to spill liquid on the printer and the AC adapter.
- ❑ Do not put your hand inside the printer or touch the photo cartridge during printing.
- ❑ Do not use aerosol products that contain flammable gases inside or around this product. Doing so may cause fire.
- ❑ Always turn the printer off using the I/O On button. Do not unplug the printer or turn off the power to the outlet until the power light goes out.
- ❑ Before transporting the printer, make sure that the photo cartridge is in place.

- ❑ Leave the photo cartridge installed. Removing the cartridge can dehydrate the print head and may prevent the printer from printing.

When using a memory card

- ❑ Use only memory cards compatible with the printer. See “Inserting a Memory Card” on page 20

When using LCD screen

- ❑ The LCD screen contains a few small bright or dark spots. These are normal and do not mean that the LCD screen is damaged in any way.
- ❑ Only use a dry, soft cloth to clean the LCD screen. Do not use liquid or chemical cleansers.
- ❑ If the LCD screen on your printer's control panel is damaged, contact your dealer. If the liquid crystal solution gets on your skin, wash them thoroughly with soap and water. If the liquid crystal solution gets into your eyes, flush them immediately with water. If discomfort or vision problems remain after a thorough flushing, see a doctor immediately.

When using the optional Bluetooth Photo Print Adapter

Refer to the Bluetooth Photo Print Adapter's documentation for the safety instructions.

When using the optional battery

- ❑ If battery acid gets into your eyes or on your skin, immediately rinse the affected area thoroughly with water and seek medical treatment. If a battery is swallowed, seek medical treatment immediately.
- ❑ Use only an Epson Li-ion battery model D121A for this printer according to the directions in the user documentation. Replacing the battery with an incorrect model may cause an explosion.
- ❑ Use only AC adapter model A381H to charge the battery and operate the printer.
- ❑ Do not charge or use the battery with devices other than the specified product. Using the battery with other devices may damage the battery or other devices, or may cause an explosion.

- ❑ To protect against short circuits, do not remove the outside case of the battery.
- ❑ Do not handle the battery with wet hands or use them near water.
- ❑ Do not expose the battery to water or high humidity.
- ❑ Do not drop, puncture, disassemble, mutilate, or short-circuit the battery.
- ❑ Do not place the battery near or into fire or water.
- ❑ Do not use the battery that is leaking or damaged in any way.
- ❑ Do not charge the battery on devices except this printer.
- ❑ Do not charge the battery near open flame or in very hot locations.
- ❑ Keep the battery away from heat sources.
- ❑ Do not leave the battery in a vehicle to prevent the battery from overheating.
- ❑ Do not insert objects into any openings as they may touch dangerous voltage points or short-circuit components.
- ❑ Prevent the battery from coming into contact with metal objects that could short-circuit it, such as coins or keys.
- ❑ Do not solder wires or terminals directly to the battery.
- ❑ Do not touch battery terminals.
- ❑ Keep the battery away from open flame if they leak or smell strange.
- ❑ If overheating, discoloration, or deformation occur, remove the battery from the printer and do not use it.
- ❑ Charge the battery before using it if it has not been used for a long period.

When storing the optional battery

- ❑ When not using the printer for a long period of time, remove the battery from the printer and store them separately to avoid over-discharging the battery.
- ❑ Do not store the battery where the temperature or humidity is very high.
- ❑ Store the battery out of children's reach.

When disposing of the optional battery

Before disposing of the battery, make sure you discharge them completely.

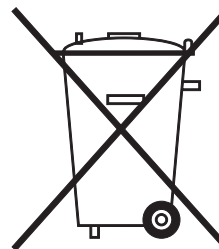


Warning:

- ❑ *Do not dispose of batteries as ordinary refuse. Instead, dispose of them in a collection or recycle box in accordance with local laws.*
- ❑ *Do not incinerate or dispose of the battery in fire.*

For European users:

Do not dispose of batteries as ordinary refuse. Instead, dispose of them in a recycle box in accordance with local laws.



For users in the United States and Canada:



This mark indicates that the battery will be recycled by RBRC. When you dispose of the battery, contact RBRC.

When handling photo cartridges

Observe the following when handling photo cartridges:

- ❑ Do not shake photo cartridge after removing it from the bag; this can cause leakage.
- ❑ Do not remove or tear the label on the cartridge; this can cause leakage.
- ❑ Do not use a photo cartridge beyond the date printed on the cartridge carton: otherwise, it may result in reduced print quality. For best results, use up the photo cartridge within six months of installing it.
- ❑ Do not dismantle photo cartridges or try to refill them. This could damage the print head.
- ❑ After bringing a photo cartridge inside from a cold storage site, allow it to warm up at room temperature for at least three hours before using it.
- ❑ Store photo cartridges in a cool, dark place.
- ❑ The IC chip on the photo cartridge retains a variety of cartridge-related information, such as the photo cartridge status so that the cartridge may be removed and reinstalled freely. However, each time the cartridge is inserted, some ink is consumed because the printer automatically performs a reliability check.
- ❑ Store each photo cartridge so that the bottom of its packaging faces down.

Warnings, Cautions, and Notes



Warnings

must be followed carefully to avoid bodily injury.



Cautions

must be observed to avoid damage to your equipment.

Notes

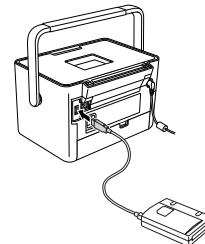
contain important information and useful tips on the operation of your printer.

Welcome!

PictureMate™ is your easy-to-use, personal photo lab. Just insert a digital camera memory card and you are ready to print brilliant photos. Because PictureMate is light and portable, you can print whenever and wherever you take photos.

3. Save

To preserve your digital photo files, save them to a CD, flash drive, or to your computer. Then you can reprint them any time.



4. Clear the Memory Card

After you save your photo files, delete them from your memory card so you have room for more photos.

Special features

Printing with your PictureMate becomes even easier with these special features:



LCD screen

From the PictureMate LCD screen, you can print all your photos or you can select just the ones you want. See “Basic Photo Printing” on page 23.

A Quick Introduction to the Digital Photography Process

1. Take Photos

Take photos with your digital camera.



2. Print

Insert your camera's memory card in PictureMate, or connect via PictBridge, choose your photos, and print.





DPOF

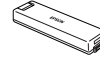
If your camera supports DPOF (Digital Print Order Format), you can preselect which photos to print while the memory card is still in your camera. Then, when you insert the card into PictureMate, it knows which photos you chose. See “Printing Camera-Selected DPOF Photos” on page 30.



If you have a PictBridge®- or USB DP (USB Direct Print)-enabled camera, you can connect the camera to PictureMate and control printing right from your camera. See “Printing From a PictBridge-Enabled Camera” on page 43.



If you have a Bluetooth®-enabled PDA, mobile phone, or computer, you can send photos wirelessly to PictureMate for printing. You just need the optional EPSON® Bluetooth Photo Print Adapter. See “Printing From a Bluetooth Device” on page 45.



If you want to print in other places without convenient electrical outlets, you can buy the optional PictureMate battery. See “Lithium Ion Battery” on page 75.

Note:

- ❑ *PictureMate supports P.I.M. (PRINT Image Matching™) image enhancement standard that is built into many cameras. To see if your camera is P.I.M.-enabled, see your camera's documentation.*

Supported Photo Formats



Make sure your photos meet these requirements for printing with your PictureMate:

- JPEG files or uncompressed TIFF files only
- Resolutions ranging from 80 × 80 to 9200 × 9200 pixels

PictureMate recognizes and prints the first 999 photos on your memory card.

Where to Find Information

Unpacking and setting up



See the *Start Here* to set up your PictureMate and install the software.

Using PictureMate away from home



When taking your PictureMate out with you, bring along the *Portable Quick Guide* for simple instructions on printing and problem solving.

Printing and changing settings



User's Guide - for use without a computer - (this book) explains how to print photos directly from your camera's memory card. It also covers how to print from other devices, replace the PictureMate Photo Cartridge, take care of PictureMate, and troubleshoot problems.

Using your PictureMate with a computer



The on-screen *User's Guide* on the CD provides comprehensive information and instructions for using PictureMate with a computer.

Panel Setting Menu List

Select menu

For details, see “Basic Photo Printing” on page 23.

Select All	Select all of the photos on your card.
Select By Date	Select photos by the date they were taken.
Select Range	Select a sequence of photos, for example 3 through 8.
Slideshow	View all photos in sequence like a slide show.
Select Source	Select the source of the photos when two or more sources are available.

Paper/Layout menu

For details, see “Making Paper and Print Layout Settings” on page 31.

10 × 15 cm (4 × 6 in.)	Borderless, Border, 2 Per Print, 4 Per Print, ID, Half Page, Index (20-up), CD Index, Digital Size
16:9 wide size	Borderless, Border, Greeting Card
Photo Sticker	1 Photo, 4 Photos, 9 Photos, 16 Photos

Edit menu

Crop Photo	Crop a part of your photo. (➔ page 36)
Color Effect	Select Black & White to print your photo in black and white. Select Sepia to print your photo in sepia. Select None for no effect.
Fix Photos	Select Auto Correction and choose more detailed enhancement option or change the Brightness, Saturation, or Sharpness level manually. (➔ page 33)
Red-Eye Reduction	Select On to correct red-eyes in your photo. (➔ page 37)
Decorate Photo	You can add, edit, or remove decoration such as pop-up on/from your photos . (➔ page 35)
Rotate	Rotate your photos by 90 degrees. (➔ page 37)

Frame menu

Add or delete P.I.F. Frames to or from your photo. You can also update the P.I.F. Frames in PictureMate's internal memory (➔ page 38)

Save Photo(s) menu

Save all or some of the photos on a memory card to an external device.

Maintenance menu

Nozzle Check
Auto Cleaning
Head Alignment
Check Photo Cartridge Status
Cleaning Sheet

Setup menu

Date Stamp	Print the date your photo was taken.
Borderless Expansion	Adjust the margins that are trimmed when you select Borderless. MAX: No margins are printed. MID: The expansion rate is low. (The margins might be printed.) MIN: The expansion rate is lower than MID. (The margins might be printed.)
Bluetooth	Make the Bluetooth settings. (➔ page 47)
Direct Print Settings	If you print from a PictBridge- or USB DP-enabled digital camera, make the basic settings with this function before printing. (➔ page 43)
After Printing	Decide whether to keep the print settings you selected or return the settings to the default you selected. (➔ page 50)
Language	Select the language to display.
Personal Settings	Change the PictureMate's default settings to your own personal preferences. (➔ page 51)
Photo View Mode	Select the default number to display from: 15 photos, 6 photos, 1 photo (with guide), 1 photo (no guide). (➔ page 23)
Sticker Adjustment	Adjust the printing position for pre-cut 16-up Photo Stickers.
Restore default settings?	Reset to the default settings. (➔ page 52)

Operation Sound	Set PictureMate to sound a tone. (➔ page 50)
Help	Display guidance for each settings.

Preparing to Print

Before you can print, you need to load paper and insert your memory card in PictureMate.

Loading Paper

When loading special paper distributed by Epson, read the instruction sheets packed with the paper first.

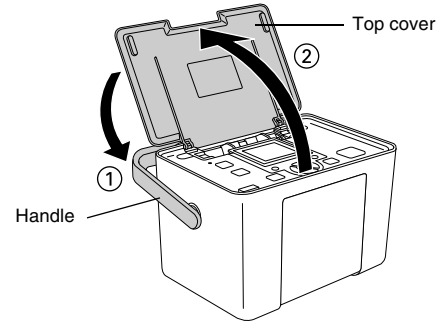
Follow these steps to load PictureMate Photo Paper:



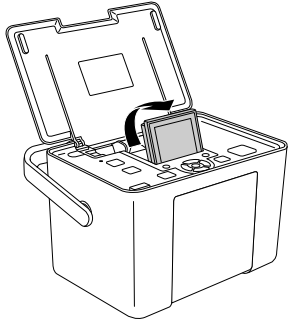
Caution:

Do not load plain paper; this may damage PictureMate.

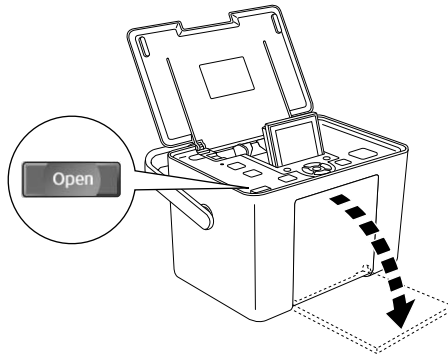
1. Move the handle to the back. Then open the top cover.



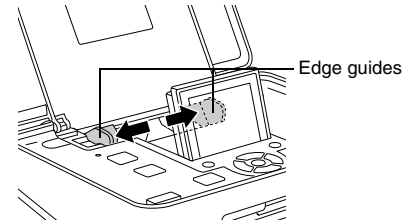
2. Raise and adjust the LCD screen so that you can see it well.



3. Press the Open button to open the front cover.



4. Slide the edge guides to the sides.

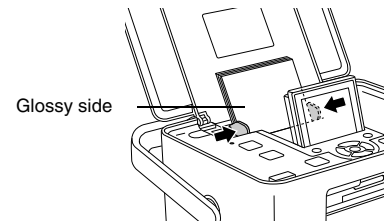


5. Place your paper in the center, with the glossy side up.

Note:

Make sure paper is glossy side up to prevent smearing.

6. Slide the edge guides against the paper. Make sure they are snug, but not so tight that paper cannot move.



Note:

When you need more paper, order a *PictureMate PicturePack*. See “*Ink, Paper, and Options*” on page 74 for more information.

Media Type	Loading Capacities
PictureMate Photo Paper Epson Ultra Glossy Photo Paper 10 × 15 cm (4 × 6 in.) Epson Premium Glossy Photo Paper 10 × 15 cm (4 × 6 in.) Epson Glossy Photo Paper 10 × 15 cm (4 × 6 in.) Epson Premium Semigloss Photo Paper 10 × 15 cm (4 × 6 in.)	20 sheets
photo paper 16:9 wide size	20 sheets
Epson Photo Stickers 100 × 148 mm Epson Photo Stickers 16 100 × 148 mm	1 sheet

Paper Handling Instructions

When storing printouts

- ❑ Do not touch the printed side or stack your printouts until the ink is dry.
- ❑ To avoid scratching the image, be sure not to rub the printed side of the paper. If the printed side is rubbed too strongly, ink may come off the paper.
- ❑ Do not stack printouts with the image sides touching.
- ❑ Do not stack printouts and conventional film photographs with the image sides touching.
- ❑ If you stack printouts, place a sheet of plain paper or other absorbent paper between the individual prints.

When storing unused paper

Return any unused paper to the original package, and store it away from extreme temperatures, high humidity, and bright lights.

When displaying printouts

- ❑ When displaying your printouts indoors, Epson recommends placing your printouts in glass frames to preserve the colors in your image.
- ❑ Avoid displaying your printouts outdoors or in a place exposed to direct sunlight to prevent fading.

Note:

For best results, allow your prints to dry thoroughly for 24 hours before framing.


Choosing a Photo Source

If more than one source such as a memory card or external device are available, you need to set the source of the photos by following this procedure before you start printing photos.



1. Press the Menu button.
2. Press the ▼ button to highlight the Select menu, then press the right soft key.
3. Press the ▼ button to highlight Select Source then press the right soft key.
4. Press the ▼ button to choose from Memory Card or External Device, then press the right soft key.

Inserting a Memory Card

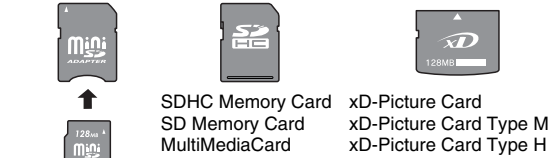
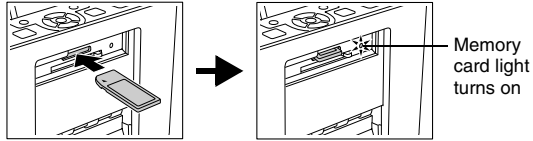
1. Press the  On button to turn on PictureMate.
2. Make sure the memory card light is off and no cards are in both slots. Then insert a memory card into the correct slot, as shown in the illustration.



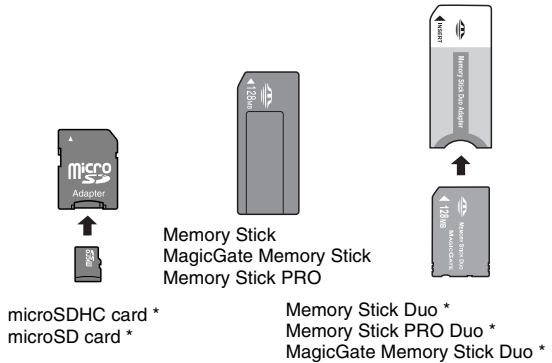
Caution:

- Insert just one card at a time.*
- Load your memory card only as shown in the following table or you may damage your printer, memory card, or both. If you insert a card incorrectly, you see an error message on the LCD screen. Remove the memory card and insert it correctly.*
- Do not press the button on the right side of the lower card slot when you insert a CompactFlash card or you cannot remove the card.*
- If the CompactFlash card is not recognized, remove the card and insert it again.*

Upper slot

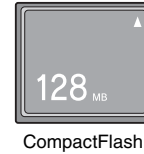
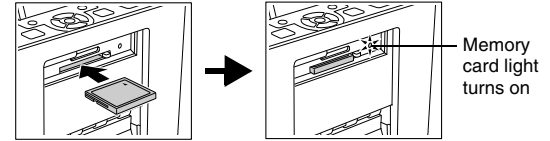


miniSDHC card *
miniSD card *

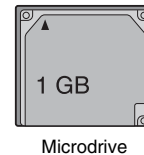


* Adapter required

Lower slot



CompactFlash



Microdrive

3. The memory card light flashes and then stays on. It takes a few seconds to recognize the memory card. Now you can choose photos and layouts for printing from the LCD screen. See “Basic Photo Printing” on page 23.

For the latest information on memory cards available for your printer, contact your dealer or regional Epson sales office.

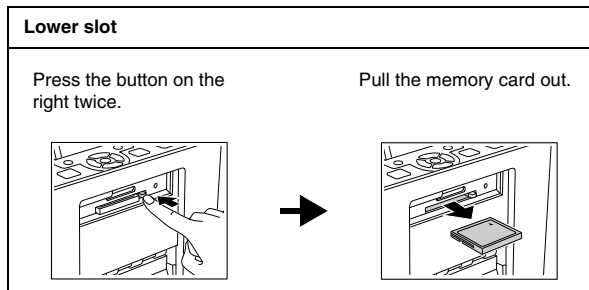
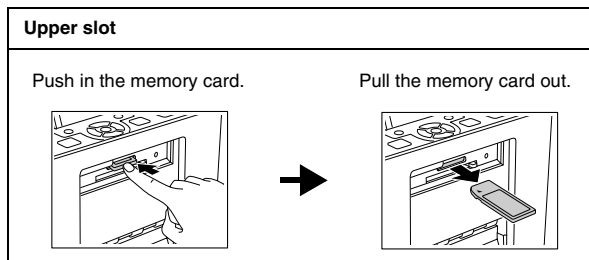
Removing the memory card

When you are ready to remove a memory card, make sure the memory card light is not flashing, then remove the memory card from the slot.




Caution:




Do not remove a card while the memory card light is flashing; you may lose photos on your card.

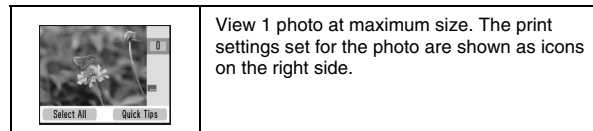


Basic Photo Printing



Changing the View of Photos on the LCD Screen

You can change the view of photos displayed by pressing the  Display button, and you can also set the default display by using the Setup menu - Photo View Mode setting.

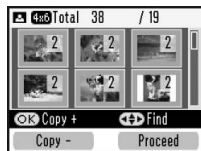
	View 15 photos.
	View 6 photos.
	View 1 photo with operation guides for the photo. The print settings set for the photo are shown as icons on the right side.



Printing All Photos

1. Press the Menu button.
2. Press the  button to highlight the Select menu, then press the right soft key.
3. Press the  button to highlight Select All, then press the right soft key.

4. Press the **OK** button to increase the number of copies for all photos, then press the right soft key to set the copies.



Note:

*If you want to set the number of copies for specified photos only, set the copies for all first, then select the photo you want to increase and press the **OK** button until you see the desired number of copies. To decrease the number of copies, press the left soft key.*


5. To make optional settings, see “Printing Options” on page 31.
6. Press the right soft key to preview the print settings.
7. Press the right soft key to open the Paper/Layout menu.
8. Press the **▼** button to highlight the desired paper size, then press the right soft key.
9. Press the **▼** button to highlight the desired layout, then press the right soft key.
10. Press the **Print** button to start printing.

Note:

If there is DPOF information on the memory card, PictureMate goes to DPOF print mode. See “Printing Camera-Selected DPOF Photos” on page 30 for details. To print all of the photos on the memory card, press the Cancel button and follow the steps above.

Printing Selected Photos

1. Press the **▲**, **▼**, **◀**, or **▶** button to highlight the photo you want to print, then press the **OK** button. The copy number for that photo is set to 1.
2. If you want to increase the number of copies, press the **OK** button until you see the desired number. To decrease the number of copies, press the left soft key.
3. Repeat the steps 1 and 2 for additional photos.
4. To make optional settings, see “Printing Options” on page 31.

5. Press the right soft key to preview the print settings.
6. Press the right soft key to open the Paper/Layout menu.
7. Press the ▼ button to highlight the desired paper size, then press the right soft key.
8. Press the ▼ button to highlight the desired layout, then press the right soft key.
9. Press the  Print button to start printing.

Printing a Range of Photos

Follow the steps below to print a range or sequence of photos.


1. Press the Menu button.
2. Press the ▼ button to highlight the Select menu, then press the right soft key.
3. Press the ▼ button to highlight Select Range, then press right soft key.
4. Press the ▲, ▼, ◀, or ▶ button to highlight the first photo, then press the right soft key.
5. Press the ▲, ▼, ◀, or ▶ button to highlight the last photo, then press the right soft key.



6. Press the OK button to increase the number of copies for all photos, then press the right soft key to set the copies.

Note:


If you want to set the number of copies for specified photos only, select the photo you want to increase and press the OK button until you see the desired number of copies. To decrease the number of copies, press the left soft key.

7. To make the optional settings, see “Printing Options” on page 31.
8. Press the right soft key to preview the print settings.
9. Press the right soft key to open the Paper/Layout menu.
10. Press the ▼ button to highlight the desired paper size, then press the right soft key.
11. Press the ▼ button to highlight the desired layout, then press the right soft key.
12. Press the  Print button to start printing.

Printing Photos Searching By Date

If you know the date the photos were taken, you can find and print them easily using this menu.

1. Press the Menu button.
2. Press the ▼ button to highlight the Select menu, then press the right soft key.
3. Press the ▼ button to highlight Select By Date, then press right soft key.
4. Highlight the date you want, then press the OK button to check the date.
5. Press the right soft key. Photos taken on the specified date are displayed.

You can change the way the date is displayed by pressing the  Display button.




Date view



Calendar view


6. Press the ▲, ▼, ◀, or ▶ button to highlight the photo you want to print, then press the OK button.
7. If you want to increase the number of copies, press the OK button until you see the desired number. To decrease the number of copies, press the left soft key.
8. To make optional settings, see “Printing Options” on page 31.
9. Press the right soft key to preview the print settings.
10. Press the right soft key to open the Paper/Layout menu.

11. Press the ▼ button to highlight the desired paper size, then press the right soft key.
12. Press the ▼ button to highlight the desired layout, then press the right soft key.
13. Press the  Print button to start printing.

Printing an Index

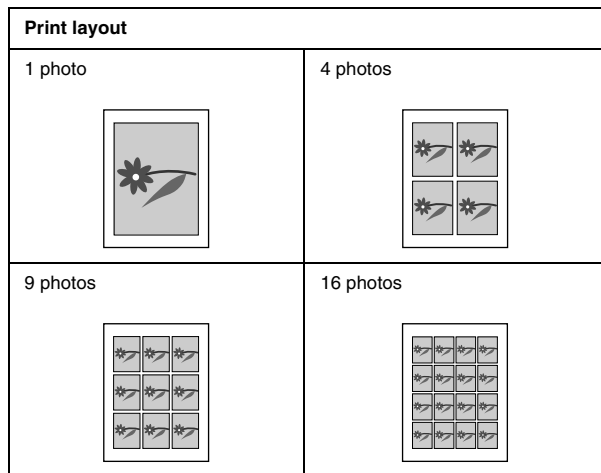
Prints all of the photos on your memory card or from the specified external device. The photo number is printed at the lower left and the date or file name is printed at the lower right of each photo.

1. Select the photos to print.
2. Press the Menu button.
3. Press the ▼ button to highlight the Paper/Layout menu, then press the right soft key.
4. Press the ▼ button to highlight 10 × 15 cm (4 × 6 in), then press the right soft key.
5. Press the ▼ button to highlight Index (20-up), then press the right soft key.

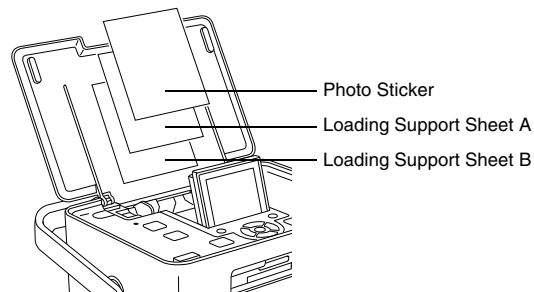
6. Press the  Print button to start printing.

Printing on Photo Stickers

You can print 1, 4, 9, or 16 photos on the Epson Photo Sticker.



1. Load an Epson Photo Sticker sheet with Loading Support Sheets.






Note:

Be sure to use the loading support sheets, and load one sheet at a time.

2. Press the Menu button.
3. Press the ▼ button to highlight the Paper/Layout menu, then press the right soft key.
4. Press the ▼ button to highlight Photo Sticker and press the right soft key.
5. Press the ▼ button to choose 1 Photo, 4 Photos, 9 Photos, or 16 Photos, then press the right soft key.

6. Press the ◀, ▲, ▶, or ▼ button to select the photo you want to print, then press the OK button.
7. Press the OK button to increase the number of copies for that photo. To decrease the number of copies, press the left soft key.
8. Repeat steps 6 and 7 for additional photos.

Print layout when 4 photos, 9 photos, or 16 photos is selected (The images below show the case of 16 photos)	
When 1 photo is selected	
More than two photos or copies are selected	


9. Press the right soft key to preview the print settings.
10. Press the  Print button to start printing.

When using pre-cut Photo Stickers

If you are printing on pre-cut 16-up Photo Stickers, and the printing is misaligned, follow the steps below to adjust the print position.

1. Press the Menu button.
2. Press the ▼ button to highlight the Setup menu, then press the right soft key.
3. Press the ▼ button to highlight Sticker Adjustment, then press the right soft key.
4. Press the ▲ or ▼ button to move the print position in a vertical direction. Press the ◀ or ▶ button to move the print position in a horizontal direction.

You can move the print position up to 2.5 mm in each direction.

5. Press the right soft key to preview the print settings.
6. Press the  Print button to start printing.

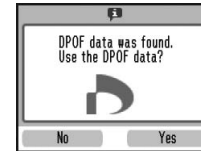
Note:

The printer remembers the print adjustment setting even after it has been turned off, so you do not need to adjust the position each time.

Printing Camera-Selected DPOF Photos

If your camera supports DPOF (Digital Print Order Format), you can use it to preselect which photos and how many copies you want to print. See your camera's manual to choose photos for printing with DPOF, then insert your memory card in PictureMate. PictureMate automatically reads your preselected photos.

1. Load paper and a memory card that contains DPOF data. The screen below appears on the LCD screen.



2. Press the right soft key to start printing.









Note:


If you want to print all of the photos on the memory card, press the Cancel button. See "Printing All Photos" on page 20.

Printing Options

Making Paper and Print Layout Settings

You can select the print layout from the following options.

10 × 15 cm (4 × 6 in)	
	Borderless
	Border
	2 Per Print
	4 Per Print
	ID Prints 4 35 × 45 mm photos and 5 25.4 × 38 mm photos.
	Half Page
	Index (20-up)
	CD Index Prints 56 photos as thumbnails

10 × 15 cm (4 × 6 in)	
	Digital Size




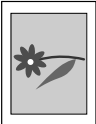
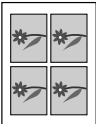
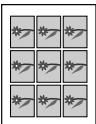
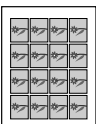
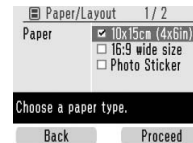
16:9 wide size	
	Borderless
	Border
	Greeting Card

Photo Sticker	
	1 Photo
	4 Photos
	9 Photos
	16 Photos

1. Set the number of copies for the selected photos, then press the Menu button.

2. Press the ▼ button to highlight the Paper/Layout menu, then press the right soft key.



3. Press the ▼ button to highlight the desired size, then press the right soft key. The layout menu is displayed.
4. Press the ▼ button to highlight the desired print layout, then press the right soft key. The selected paper size and layout are displayed in the upper left corner of the LCD screen.

Touching Up Your Photos (Manual/Auto)

PictureMate lets you correct the color and improve the image quality of your photos without using a computer. Two basic types of adjustments are available:

Automatic adjustments

If your camera supports PRINT Image Matching or Exif Print, you can use the printer's P.I.M. or Exif Print setting to automatically adjust your photos for the best results.

If your camera does not support them, you can use Auto Correction to make adjustments for the type of environment in which your photos were taken.

Manual adjustments

If your photos are too light or too dark, you can adjust their brightness or control the saturation and sharpness.

Note:

These settings affect only your printed photos. They do not change your original image files.

These settings are saved when you turn off the printer or choose a different set of photos, so remember to turn off the settings when you are done.

Automatically adjusting your photos

When you use the printer's automatic image adjustments, the adjustments are applied to all your photos.

1. Press the Menu button.
2. Press the ▼ button to highlight the Edit menu, then press the right soft key.
3. Press the ▼ button to highlight Fix Photos, then press the right soft key.
4. Press the ▼ button to highlight Auto Correction, then press the right soft key.
5. Press the ▼ button to select one of the following options, then press the right soft key.
 - PhotoEnhance - Use this if a print does not look good; for example, this may correct images that are too dark, too bright, or backlit.

- P.I.M. - Process images according to the PRINT Image Matching information in your digital files. This information helps to ensure an accurate image reproduction.
- Off - Prints photos as is or bypasses P.I.M. or Exif Print data (default setting for files with no P.I.M or Exif Print data).

To make manual adjustments in addition to the automatic ones, follow the steps in the next section.

Manually adjusting your photos

1. Press the Menu button.
2. Press the ▼ button to highlight the Edit menu, then press the right soft key.
3. Press the ▼ button to highlight Fix Photos, then press the right soft key.
4. Press the ▼ button to highlight Brightness, Sharpness, or Saturation then press the right soft key.
5. Adjust other settings as necessary, then press the right soft key.

6. Choose the photo you want to apply this setting to, then press the right soft key.

Adding the Date

You can add the date your photo was originally taken to the bottom right corner of your print.

This function is not available for some print layouts.

1. Press the Menu button.
2. Press the ▼ button to highlight the Setup menu, then press the right soft key.
3. Make sure Date Stamp is highlighted, then press the right soft key.
4. Press the ▼ button to highlight On, then press the right soft key.
 - Off (default, turns off the date stamp)
 - On (date, month, year: 01.Aug.2006)

Note:

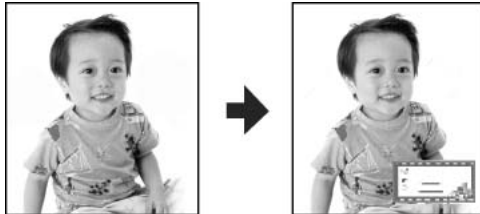
If the language is not set as English, the date stamp is as follows:

❑ On (year, month, date: 2006.08.01)

5. See “Basic Photo Printing” on page 23 and print your photos.

Decorating Your Photo

You can decorate your photos by adding clip art from PictureMate’s memory. You can add up to four pieces of clip art to a photo.



1. Highlight the photo you want to decorate.
2. Press the Menu button.

3. Press the ▼ button to highlight the Edit menu, then press the right soft key.
4. Press the ▼ button to highlight Decorate Photo, then press the right soft key.
5. Highlight Add Decoration, then press the right soft key.
6. Highlight the clip art you want to add, then press the OK button.



7. To move the clip art, use the 4-way scroll buttons. To resize the clip art, first press the right soft key and then use both of the soft keys.



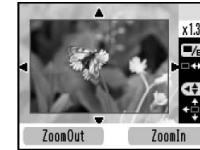
- Press the OK button to set the position. If you add more clip art, press the right soft key and repeat the steps 6 to 8.
- Press the OK button to complete adding clip art.


Cropping and Sizing Your Photos

You can print just part of a photo, cropping out the area that you do not want. You can choose only one photo to crop at a time.

- Highlight the photo you want to crop.
- Press the Menu button.
- Press the ▼ button to highlight the Edit menu, then press the right soft key.
- Make sure Crop Photo is highlighted, then press the right soft key.

- Use the right soft key to crop a photo. You see a blue frame around the cropped area.



- Use the following buttons to set the area you want to crop.
 - Press the right or left soft key to change the frame size.
 - Press the ▲, ▼, ◀, or ▶ button to move the frame.
 - Press the  Display button to rotate the frame.
- Press the OK button to confirm the cropped image.

Removing Red-eye

When you take photos of people, they sometimes appear to have red-eyes in the photo. You can apply Red-Eye Reduction to help eliminate this problem.

1. Highlight the photo from which you want to remove red-eye.
2. Press the Menu button.
3. Press the ▼ button to highlight the Edit menu, then press the right soft key.
4. Press the ▼ button to highlight Red-Eye Reduction, then press the right soft key.
5. Press the ▼ button to highlight On, then press the right soft key.
6. Choose the photo you want to apply this setting to, then press the right soft key.

Note:

Depending on the type of photo, parts of the image other than the eyes may be corrected.

Rotating a Photo on the LCD Screen

You can rotate photos in the photo frame by 90 degrees.

Note:

This function rotates the photo image displayed on the LCD screen. It does not affect the printed photos.

1. Highlight the photo you want to rotate.
2. Press the Menu button.
3. Press the ▼ button to highlight the Edit menu, then press the right soft key.
4. Press the ▼ button to highlight Rotate, then press the right soft key.
5. Press the ▼ button to highlight 90 degrees, 180 degrees, 270 degrees, or Do Not Rotate then press the right soft key.

Printing with P.I.F. Frames



You can decorate your photo by printing it with a P.I.F. Frame! With this option, the photo is printed borderless. You can choose P.I.F. Frames in the printer or in other devices and print them with photos. You can copy P.I.F. Frames from your PC to a memory card by using EPSON PRINT Image Framer Tool software contained in the software CD-ROM. For details on using the software, see the on-screen User's Guide.

1. If you want to use P.I.F. Frames other than in PictureMate within itself, prepare the media containing digital photo data and P.I.F. Frames and connect it.

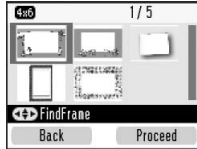
Note:

- ❑ *You can combine photo and P.I.F. Frames in the same device or within the PictureMate itself.*

2. Highlight the photo you want to print with a P.I.F. Frame.
 3. Press the Menu button.
 4. Press the ▼ button to highlight the Frame menu, then press the right soft key.
 5. Press the ▼ button to highlight Add Frame to Photo, then press the right soft key. P.I.F. Frames that are available in PictureMate and in the device where the photo data is stored are displayed.
 6. Press the ▲, ▼, ◀, or ▶ button to highlight the P.I.F. Frame you want to use, then press the OK button.
- ❑ *Be sure to save the P.I.F. Frame to the memory card using the EPSON PRINT Image Framer Tool; otherwise the P.I.F. Frame file name does not appear on the LCD panel.*

Note:


The paper sizes you can use to print with the selected P.I.F. Frame appear in the upper left of the screen.



7. Choose the photo you want to apply this setting to, then press the right soft key.



8. Press the OK button to increase the number of copies. To decrease the number of copies, press the left soft key.
9. Repeat the steps from 2 to 8 for additional photos.
10. Press the right soft key to preview the print settings.

11. Press the right soft key to open the Paper/Layout menu.
12. Press the ▼ button to highlight the desired paper size, then press the right soft key.
13. Press the ▼ button to highlight the desired layout, then press the right soft key.
14. Press the  Print button to start printing.

Updating P.I.F. Frame in PictureMate

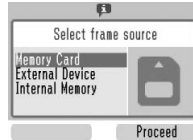
PictureMate stores P.I.F. Frame data within itself. You can copy the P.I.F. Frames in the following devices and update the P.I.F. Frames in PictureMate's internal memory.

- Memory card
- External device

Follow the steps below to update the P.I.F. Frame in PictureMate.

1. Connect or insert the device that contains P.I.F. Frame for updating.

2. Press the Menu button.
3. Press the ▼ button to highlight the Frame menu, then press the right soft key.
4. Press the ▼ button to highlight Update Frames, then press the right soft key.
5. If a confirmation message is displayed telling you that PictureMate will clear the print settings, press the right soft key to select Yes.
6. Press the ▼ button to select the source to update the P.I.F. Frame, then press the right soft key.



Caution:

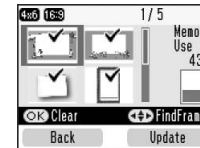
Do not connect or disconnect a memory card or an external device, and do not move PictureMate while updating P.I.F. Frame.

7. The P.I.F. Frame list is displayed. Select the P.I.F. Frames to update. The current data volume for the allocated space for P.I.F. Frames is shown on the right. P.I.F. Frame data that exceeds 100% is not updated.

Note:

P.I.F. Frames stored in PictureMate's internal memory are checked. P.I.F. Frames read from the connected device are not checked.

You can select or deselect the P.I.F. Frames to store in the internal memory by using the OK button.



8. Press the right soft key to update.

Printing From an External Device

PictureMate can print stored photos on a computer or on another device such as an external hard drive, a Bluetooth-enabled device, or a digital camera.

Printing From an External Drive



If you saved your photos to a CD, Zip disk, or flash memory (thumb) drive, you can connect to the drive to the back of PictureMate and print just like you do when you insert a memory card.

You can also print photos from a CD that you get from a photo processing lab. (Images should be in JPEG file format. Some CDs may not work.)

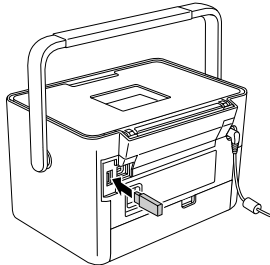
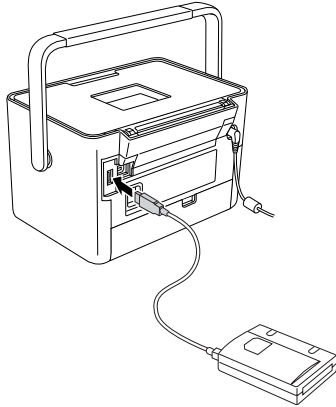
1. Make sure PictureMate is on.
2. Make sure there are no memory cards in PictureMate's memory card slots. The card light should be off.

Note:

If a memory card is inserted, the printer will read photos from the card, not from an external drive.

3. If PictureMate is connected to a computer, disconnect it or turn off the computer.

4. Connect your CD or Zip drive's USB cable, or plug your flash memory drive into the EXT. I/F port on the back of PictureMate.



5. For a CD or Zip drive, insert a CD or Zip disk with photos into the drive.

If you used PictureMate to save photos on the same CD-R, Zip disk, or flash memory drive more than once, it will have multiple folders. You see this message:



Press ▼ to highlight the folder where your photos are stored, then press the right soft key. The most recently saved folder has the largest number.

6. PictureMate counts the photo on your drive, then shows the following screen:

If you see this screen, you are ready to choose and print photos. See “Basic Photo Printing” on page 23 and print your photos.



Printing From a PictBridge-Enabled Camera

You can connect your PictBridge- or USB DP-enabled digital camera to the back of PictureMate and use the camera to control printing. (See your digital camera's documentation to see if it supports the PictBridge standard or USB DP.)

1. Make sure PictureMate is on.
2. Make sure there are no memory cards in PictureMate's slots. The memory card light should be off.

Note:

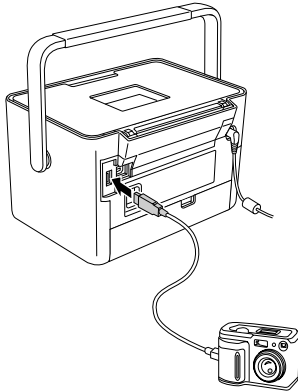
If a memory card is inserted, the printer will read photos from the card, not from a camera.

3. Press the Menu button.
4. Press the ▼ button to highlight the Setup menu, then press the right soft key.
5. Press the ▼ button to highlight Direct Print Settings, then press the right soft key.

6. Follow the on-screen instructions to make the Direct Print Settings.



7. Connect your camera's USB cable to your camera and the EXT. I/F port on the back of PictureMate.

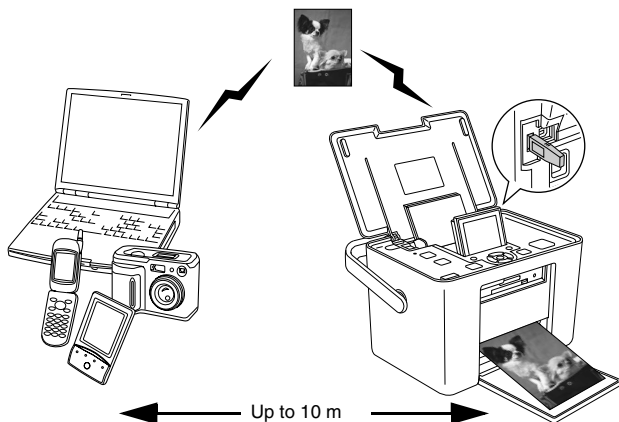


8. Use the digital camera to select the photo you want to print. Be sure to make the desired print settings on the digital camera because the digital camera settings generally take precedence over the print settings of PictureMate. See your digital camera's documentation for information on more detailed settings.
9. Print from the digital camera.

Printing From a Bluetooth Device

About the Bluetooth Photo Print Adapter

The optional Bluetooth Photo Print Adapter is a wireless communication module used to print from digital cameras and other devices with Bluetooth wireless technology without cables when connected to the printer.



Note:

- ❑ While this product complies with the Bluetooth Specification, it is not guaranteed to work with all devices enabled with Bluetooth wireless technology.
- ❑ The communication range of this product is approximately 10 meters; however, this may vary depending on conditions including obstacles between devices; signal quality; magnetic fields; static electricity and electromagnetic interference; software; operating system; reception sensitivity; and antenna performance.

Available Profile

Basic Printing Profile (BPP)

Basic Imaging Profile (BIP)

Printable file size is up to 2.5 MB. Up to 10 jobs can be queued (Maximum 3 MB).

Hardcopy Cable Replacement Profile (HCRP)

Object Push Profile (OPP)

Connecting and disconnecting the Bluetooth Photo Print Adapter

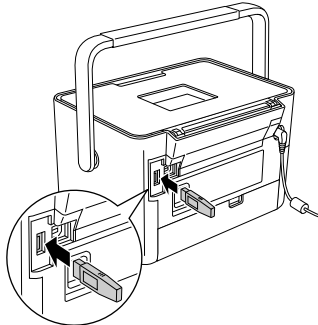
Connecting

1. Insert the Adapter connector into the EXT. I/F port as shown below.



Caution:

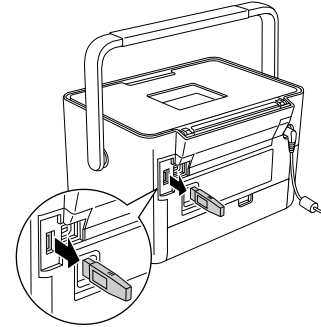
Do not connect this product while the printer is operating. Doing so may cause the printer to malfunction.



2. The Adapter's light comes on for one second. If the LED does not turn on, disconnect the Adapter from PictureMate, then reconnect it.

Disconnecting

Remove the Adapter's connector from the EXT. I/F port as shown below.



Caution:


- Do not remove this product while communicating with another device.
- Do not disconnect this product while the printer is operating. Doing so may cause the printer to malfunction.
- Do not remove this product by pulling on its upper section. Doing so may damage the product.



Bluetooth settings


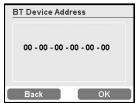
Use the LCD screen on PictureMate to make settings for Bluetooth wireless communication.

➔ See “Making settings” on page 48

Outline of settings

Setting	Choices	Description
 <p>Bluetooth Device Name</p>	printer name-(number) (Default = 1)	<p>If multiple printers enabled with Bluetooth are in the same communication range, distinguish them by assigning each number from 0 through 9.</p> <p>To make the Device Name setting take effect, turn the printer off and then back on.</p>

 <p>Bluetooth Communication Mode</p>	Discoverable	This mode allows devices enabled with Bluetooth to freely discover the printer and print.
	Not Discoverable	<p>This mode prevents unknown devices from discovering the printer.</p> <p>To print in this mode, first search for the printer once in Discoverable mode. After your device has discovered the printer in Discoverable mode once, it will subsequently be able to communicate with and print from it in this mode.</p>
	Pairing	This mode requires that the four-digit Passkey be entered into a device before it can communicate with and print from the printer.
 <p>Bluetooth Encryption</p>	On/Off (Default = Off)	<p>Select On to encrypt communication.</p> <p>Encryption requires that the four-digit Passkey be entered into a device before it can communicate with and print from the printer.</p>

 <p>Bluetooth Passkey</p>	<p>Any four-digit number (Default = 0000)</p>	<p>The Passkey setting allows you to set the four-digit Passkey that must be entered into a device before printing if Pairing is selected as the BT Comm Mode or if Encryption is On.</p>
 <p>Bluetooth Device Address</p>	<p>Set at the factory (Example) 11-11-11-11-11-11</p>	<p>Displays the unique Bluetooth Device Address of the printer.</p>

Making settings

1. Connect the Bluetooth Photo Print Adapter to PictureMate.
➔ See “Connecting and disconnecting the Bluetooth Photo Print Adapter” on page 46

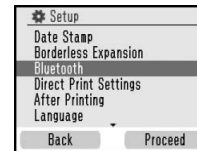


Caution:

Be sure that the printer is not operating before connecting this product. Otherwise, the printer may malfunction.

2. Press the Menu button.

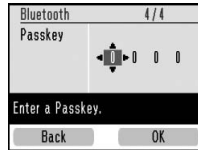
3. Press the ▼ button to highlight the Setup menu, then press the right soft key.
4. Press the ▼ button to highlight Bluetooth, then press the right soft key.



5. Make sure Bluetooth Settings is highlighted, then press the right soft key.
6. Press the right soft key to select the desired Bluetooth option.
7. Change the settings of each item using the ▲, ▼, ◀, or ▶ button. See “Outline of settings” on page 47 for information about Bluetooth settings except Passkey setting. See the “The Bluetooth Passkey Setting” on page 49 to set the Passkey.

The Bluetooth Passkey Setting

1. Press the ▲ or ▼ button to select a number for the digit, then press the ► button to set the number.



Note:

Press the ◀ button to return to the digit on the left.

2. Select numbers for the other digits in the same manner, then press the right soft key.
3. At the confirmation screen, press the right soft key to activate the Passkey.

Printing

1. Make sure the Bluetooth Photo Print Adapter is connected to PictureMate and Bluetooth settings have been made. For details on connecting the Bluetooth Photo Print Adapter, see “Connecting and disconnecting the Bluetooth Photo Print Adapter” on page 46. See “Bluetooth settings” on page 47 to set the Bluetooth settings.
2. Use the PictureMate’s control panel to adjust the print settings. (For example Paper/Layout and Color Effect.)
3. Print the data from your Bluetooth enabled device.

Note:

The settings available may vary among Bluetooth wireless-capable devices. For more information, refer to your device’s documentation.

For more information about printing from Bluetooth wireless-capable mobile phones, digital still cameras, digital video cameras, PDAs, mobile PCs and other Bluetooth wireless-capable device, refer to the documentation for both the device and the printer.

Setting PictureMate Preferences

Set Operation Sound On or Off

Set the Operation Sound setting to On to set PictureMate to sound a tone, for example when an error or warning occurs.

1. Press the Menu button.
2. Press the ▼ button to highlight the Setup menu, then press the right soft key.
3. Press the ▼ button to highlight Operation Sound, then press the right soft key.
4. Press the ▼ button to highlight the setting you want to change, then press the right soft key.
 - Battery Status : Beeps when the battery is low.
 - Error Status : Beeps when the cartridge is expended or the paper is out.

- Button : Beeps when an invalid button is pressed or grayed-out unavailable item is selected.

5. Press the ▼ button to highlight On, then press the right soft key.

Setting the After Printing Confirmation

This setting lets you decide whether to keep the print settings you selected or return the settings to the default you selected in After Printing setting. For more information on making your own default settings, see “Changing the Default Print Settings” on page 51.

1. Press the Menu button.
2. Press the ▼ button to highlight the Setup menu, then press the right soft key.
3. Press the ▼ button to highlight After Printing, then press the right soft key.

4. Press the ▼ button to highlight the desired settings, then press the right soft key.
 - ❑ Ask Each Time : Display the confirmation screen after printing and let you choose whether to keep your settings or return to the default you selected.
 - ❑ Save Settings : Keep the settings after printing.
 - ❑ Clear Settings : Default. Return to the personal default settings.

Note:

Even when you select Save Settings or Ask Each Time and choose to keep the settings, they will not be kept in the following cases.

- ❑ *When you select another print option.*
- ❑ *When the memory card is removed.*
- ❑ *When PictureMate is turned off.*

Changing the Default Print Settings

You can change the PictureMate's default settings to your own personal preferences.

1. Press the Menu button.
2. Press the ▼ button to highlight the Setup menu, then press the right soft key.
3. Press the ▼ button to highlight Personal Settings, then press the right soft key.
4. Follow the on-screen information to change the settings.

Resetting All Print Settings

Follow the steps below to reset the print settings you have changed. Adjusted values for head alignment, Bluetooth settings, and the language setting are not reset.

1. Press the Menu button.
2. Press the ▼ button to highlight the Setup menu, then press the right soft key.
3. Press the ▼ button to highlight Restore default settings?, then press the right soft key.
4. At the confirmation screen, press the right soft key to reset all the print settings.

Saving Your Photos to an External Device (Backup)

You can choose your photo files on your memory card and save them to one of the following devices by connecting the device directly to PictureMate. Except for the Flash memory drive, you can save photos to several disks when the photo data size is larger than the disk size:

- ❑ CD-R/RW drive (CD-R/DVD-R media only)
- ❑ MO drive
- ❑ Iomega® Zip® disk (100, 250, or 750 MB)
- ❑ Flash memory (thumb) drive

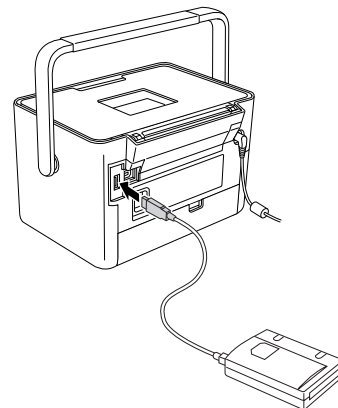
Note:

Epson cannot guarantee the compatibility of any drives.

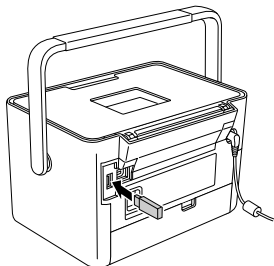
1. Make sure PictureMate is on.
2. Insert your memory card into PictureMate.
3. If you are using a CD-R/RW drive or Zip drive, plug it into an electrical outlet if required.

4. Connect the drive to PictureMate.

- ❑ For a CD-R/RW, MO or Zip drive, connect its USB cable to the EXT. I/F port on the back of PictureMate. Then insert a CD-R/DVD-R, MO or Zip disk in the drive.




- ❑ For a flash memory drive, plug it into the EXT. I/F port on the back of PictureMate.



Note:

If you want to save specified photos only, select the photos first.

5. Press the Menu button.
6. Press the ▼ button to highlight the Save Photo(s) menu, then press the right soft key.
7. Select All Photo or Selected Photos, then press the right soft key.
8. When the confirmation message appears, press the right soft key.
9. If a message asking if you want to print an index of the saved photo(s) is displayed, select Yes or No. If you select Yes, the printer starts printing photos to be saved in  CD Index layout after saving the photos to a disk. This layout prints a maximum of 56 thumbnails. Load 4 × 6 inch photo paper in the paper feeder.
10. Follow the instructions on the LCD screen to save photos.

Note:

You cannot cancel saving photos once it has started.

11. When saving has finished press the right soft key.



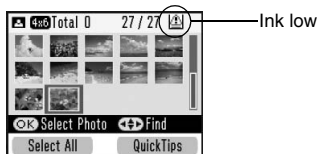
Caution

Do not remove the drive or memory card while the photos are being saved, or you may lose photos on your card or drive. You can save photos multiple times to the same disk or drive until it is full. Each time you save photos on the same disk or drive, they are saved in a new folder. The first folder is named 001, the second folder is named 002, and so on. If you save on a CD-R/DVD-R, PictureMate names the CD-R/DVD-R Photo.

Replacing the Photo Cartridge

Checking the Photo Cartridge Status

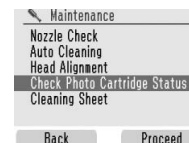
When the photo cartridge is low on ink, you see this icon in the upper-right corner of the LCD screen.



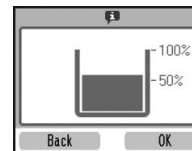
You can check the photo cartridge status at any time.

1. Press the Menu button.
2. Press the ▼ button to highlight the Maintenance menu, then press the right soft key.

3. Press the ▼ button to highlight Check Photo Cartridge Status, then press the right soft key.



4. You see a screen showing the photo cartridge status. Press the right soft key to close the screen.



Replacing the Photo Cartridge

When the photo cartridge needs replacement, you see a message on the LCD screen.

PictureMate uses photo cartridge equipped with an IC chip. The IC chip monitors the photo cartridge status.



Warning:

Keep photo cartridges out of the reach of children. Do not allow children to drink from or handle the cartridges.



Caution:

- Epson recommends the use of genuine Epson photo cartridges. Epson warranties do not cover damage to your printer caused by the use of photo cartridges not manufactured by Epson.*

- Leave the old cartridge installed in the printer until you have obtained a replacement; otherwise, ink remaining in the print head nozzles may dry out.*

- Do not refill photo cartridges. Other products not manufactured by Epson may cause damage that is not covered by Epson's warranties, and under certain circumstances, may cause erratic printer behavior.*

Note:

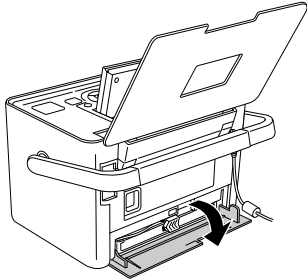
In addition to the ink used during an image printing, ink is consumed during the print head cleaning operation, and during the self-cleaning cycle which is performed when the printer is turned on.

For more information about photo cartridges.

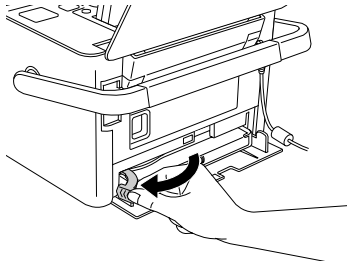
➔ See “When handling photo cartridges” on page 8

1. Make sure that PictureMate is on, but not printing.

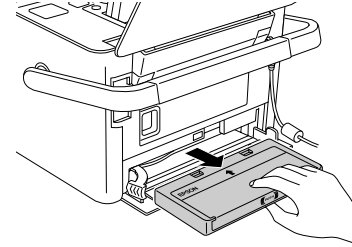
2. Open the cartridge compartment cover on the back of PictureMate.



3. Set the cartridge lever in the Release position by pulling it to the left. The photo cartridge will be ejected about halfway out of the cartridge holder.



4. Pull the cartridge out of PictureMate and dispose of it properly.



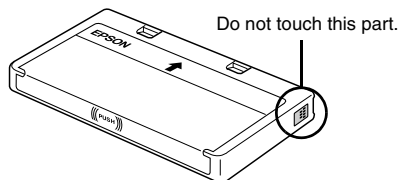
Note:

- ❑ *Do not take the used cartridge apart or try to refill it. Do not shake the used photo cartridge; otherwise, it may leak.*
 - ❑ *The photo cartridge must be replaced when any one of the colors is depleted. The rate that a specific color of ink is consumed depends on the images printed.*
5. Remove the replacement photo cartridge from its package.



Caution:

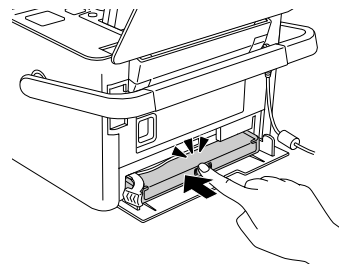
- ❑ Do not touch the green IC chip on the side of the cartridge. This can damage the photo cartridge.



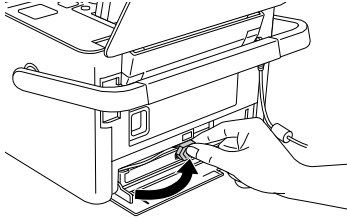
- ❑ If you remove the photo cartridge for later use, be sure to protect the ink supply ports from dirt and dust; store it in the same environment as the printer. Note that there is a valve in the ink supply ports, making covers or plugs unnecessary, but care is needed to prevent the ink from staining items that the cartridge touches. Do not touch the ink supply ports or surrounding area.

- ❑ Be sure to always install a photo cartridge into the printer immediately following the removal of the current photo cartridge. If a photo cartridge is not installed promptly, the print head may dry out, rendering it unable to print.

6. Place the cartridge properly into the cartridge holder, then push it in until you feel resistance and hear the cartridge faintly click into place.



7. Set the lever to the Lock position by sliding it to the right.



8. Close the cartridge compartment cover.

Note:

If you cannot close the cartridge compartment cover, the photo cartridge is not installed correctly. Go back to the step 4 and eject the photo cartridge. Then install the photo cartridge again.

Transporting Your PictureMate

PictureMate's handle makes it easy to carry short distances. If your PictureMate is going to travel a longer distance, you should pack it carefully following the steps below to protect it from getting damaged.

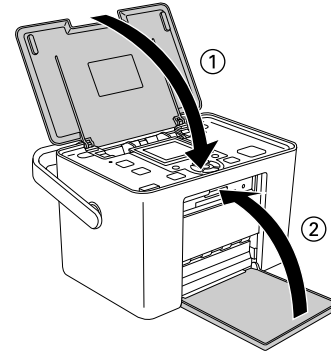


Caution:

Keep PictureMate out of the sun and don't leave it in your car or other location where it can get too hot.



1. If PictureMate is on, turn it off.
2. Wait until the LCD screen goes blank, then unplug the power cord from the electrical outlet.
3. Remove paper from the paper feeder and front cover.
4. Close the LCD screen.
5. Close the top cover and front cover.
6. Disconnect the power cord and any connected USB cable from the back of PictureMate.
7. Pack the power cord, AC adapter, paper, spare photo cartridge, and all manuals in the travel case.
8. Pack PictureMate and the travel case in the box that PictureMate came in.





Caution:

Make sure the photo cartridge is installed before transporting. Do not place PictureMate on its side or upside down, or ink may leak.

Note:

If your prints do not look as good after PictureMate has been moved, try aligning the print head. See "Aligning the Print Head" on page 63.

Maintaining PictureMate

Cleaning and Checking the Print Head Nozzles


If your print quality is not as good as it used to be, if your photos are light or faint, or you are missing colors in your prints, your print head nozzles may be clogged.

Note:

- ❑ *Print head cleaning consumes some ink. To avoid wasting ink, clean the print head only if print quality declines; for example, if the printout is blurry or the color is incorrect or missing.*
 - ❑ *Use the Nozzle Check function first to confirm that the print head needs to be cleaned. This saves ink.*
 - ❑ *If a message on the LCD screen tells you that the cartridge needs replacement or is low on ink, you cannot clean the print head. You must first replace the photo cartridge.*
1. Make sure that PictureMate is turned on and no warnings or errors are displayed on the LCD screen.

2. Load a sheet of paper. See “Loading Paper” on page 16.
3. Press the Menu button.
4. Press the ▼ button to highlight the Maintenance menu, then press the right soft key.
5. Press the ▼ button to highlight Auto Cleaning, then press the right soft key.
6. If a confirmation message is displayed, press the right soft key to select OK. The cleaning starts. The processing icon appears on the screen while cleaning is in progress.

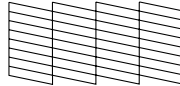


7. Press the right soft key, then press the  Print button to print the nozzle check pattern.

8. Examine the nozzle check pattern you printed.

Below are sample printouts.

Okay



Needs Cleaning



The above sample may be shown in black and white, but the actual test prints in color (Black, Cyan, Magenta and Yellow).

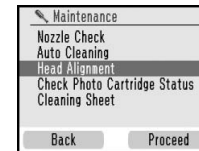
If the nozzle check page does not print satisfactorily (for example, if any segment of the printed lines is missing), your print head nozzles may be clogged.


9. If the nozzle check pattern is satisfactory, press the right soft key. If the nozzle check pattern is not satisfactory, press the left soft key and clean the print head again. If you do not see any improvement after cleaning about two times, check the solutions beginning on page 69. You can also turn the printer off and wait for at least 6 hours - this allows any dried ink to soften-and then try cleaning the print head again.

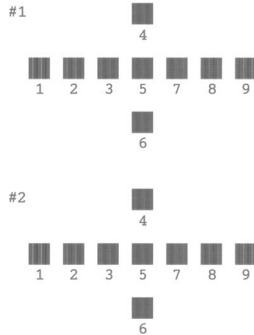
Aligning the Print Head

If you have moved PictureMate and the print quality is not as good as it was before—for example, you see misaligned vertical lines or light or dark horizontal banding—you may need to align the print head.

1. Make sure that PictureMate is turned on and no warnings or errors are displayed on the LCD screen.
2. Load a sheet of photo paper. See “Loading Paper” on page 16.
3. Press the Menu button.
4. Press the ▼ button to display the Maintenance menu, then press the right soft key.
5. Press the ▼ button to highlight Head Alignment then press the right soft key.

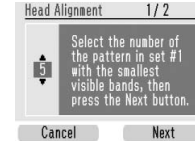


6. Press the right soft key to proceed.
7. Press the  Print button to print the Head Alignment Pattern.
8. The following Head Alignment Pattern is printed.



9. Look at the alignment pattern in each set and find the patch which is most evenly printed, with no noticeable streaks or lines.

10. Press the ▲ or ▼ button to highlight the number for the best pattern (1 to 9) in set #1, then press the right soft key.



11. Select the number for set #2, then press the right soft key.

Cleaning PictureMate

Cleaning the roller inside

When you use Epson Ultra Glossy Photo Paper, use this function to clean the roller inside PictureMate.

1. Load several sheets of paper.
2. Press the Menu button.
3. Press the ▼ button to highlight the Maintenance menu, then press the right soft key.
4. Press the ▼ button to highlight Cleaning Sheet, then press the right soft key, then follow the instructions on the LCD screen.
5. Repeat Steps 2 to 4 if needed, and press the left soft key to exit.

Cleaning the outer case

To keep PictureMate operating at its best, clean it thoroughly several times a year as follows.

1. Turn off PictureMate and unplug the power cord.
2. Remove any paper from the paper feeder.
3. Use a soft brush to carefully clean away all dust and dirt from the paper feeder.
4. If the outer case or the inside of the paper feeder is dirty, wipe it with a soft, clean cloth dampened with mild detergent. Keep the front cover closed to prevent water from getting inside.



Caution:

- ❑ *Never use alcohol or thinner to clean the printer, as these chemicals can damage the components as well as the case.*
- ❑ *Be careful not to get water on the printer mechanism or electronic components.*
- ❑ *Do not use a hard or abrasive brush.*
- ❑ *Do not spray the inside of the printer with lubricants. Unsuitable oils can damage the mechanism. Contact your dealer or a qualified service person if lubrication is needed.*

Troubleshooting

The solutions herein are for problems when printing without using a computer.

Error/Warning Messages

You can diagnose and solve most problems by checking the error messages on the LCD screen. If you cannot solve the problems, by checking the messages, use the following table and try the recommended solution.

Display	Solution
A printer error has occurred. See your printer documentation.	Turn PictureMate off and then back on. If the error message still appears, contact your dealer. ➔ See "Contacting Customer Support" on page 72
Photo cartridge low. Replace cartridge soon.	Press the right soft key to clear the error. Prepare the new photo cartridge. If you tried to clean the print head, replace the photo cartridge first. ➔ See "Replacing the Photo Cartridge" on page 56

Display	Solution
Replace photo cartridge now. For best results, use genuine Epson photo cartridge.	Replace the photo cartridge with a new one. ➔ See "Replacing the Photo Cartridge" on page 56
Service required. Parts inside your printer are near the end of their service life. See your printer documentation.	Contact Epson for assistance. ➔ See "Contacting Customer Support" on page 72
Service required. Parts in your printer are at the end of their service life. See your printer documentation.	
Bluetooth adapter error. Re-insert adapter.	Disconnect the Adapter, then reconnect to the printer. ➔ See "Printing From a Bluetooth Device" on page 45
Error in data. Printouts may be affected.	The print results may not be perfect. Check the data.
The image is too large. See your printer documentation.	Press the right soft key to clear the error. Check the data.
The image is too complex. See your printer documentation.	

Display	Solution
Cannot recognize the external device. See your printer documentation.	Disconnect the device and check that it meets the PictureMate specifications.
Cannot recognize the memory card. See your printer documentation.	Make sure the memory card has been inserted correctly. If so, check to see if there is a problem with the card and try again.
The battery is empty.	Connect the AC adapter.
Battery overheating.	Turn the PictureMate off, and wait until the battery temperature decreases.
This battery voltage is abnormal.	Turn the PictureMate off. Replace the battery with a new one.

Printer Power Problems

LCD screen is off

- Press the I/O On button to make sure that PictureMate is on.
- Turn off PictureMate and make sure that the power cord is securely plugged in.
- Make sure that your outlet works and is not controlled by a wall switch or timer.

LCD screen came on and then went out

The PictureMate's voltage may not match the outlet rating. Turn off PictureMate and unplug it immediately. Then, check the printer labels.



Caution:

If the voltage does not match, DO NOT PLUG YOUR PRINTER BACK IN. Contact your dealer.

Print and Noise Problems

PictureMate makes an unexpected noise after you install a photo cartridge.

The first time you install the photo cartridge, PictureMate will charge its print head for about three and a half minutes. Wait until charging finishes before you turn it off, or it may charge improperly and use more ink the next time you turn it on.

PictureMate makes an unexpected noise when you turn it on or after it has been sitting for awhile.

PictureMate is performing routine maintenance.

PictureMate sounds as though it is printing, but nothing prints.

- PictureMate may be preparing to print.
- Make sure the print head nozzles are not clogged. To clean the print head, see “Cleaning and Checking the Print Head Nozzles” on page 62.
- PictureMate will not work properly if it is tilted or at an angle. Place it on a flat, stable surface that extends beyond the printer base in all directions.

- Make sure paper is not jammed and is loaded correctly so it can feed into PictureMate. Make sure the handle is not resting on the paper. See “Loading Paper” on page 16 for paper loading instructions.

The memory card does not work correctly.

- Make sure you are using a compatible memory card. See “Inserting a Memory Card” on page 20.
- Make sure only one card is inserted at a time. PictureMate does not read from multiple cards at once.
- Photos must be in JPEG or Uncompressed TIFF format and taken with a DCF-compliant camera.
- PictureMate can recognize and print the first 999 photos on your memory card.

Photo Quality Problems

You see banding (light lines) in your prints.



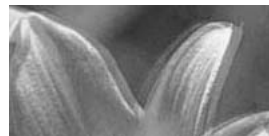
- ❑ The print head nozzles may need cleaning; see “Cleaning and Checking the Print Head Nozzles” on page 62.
- ❑ Make sure the glossy side of the paper is face up.
- ❑ The photo cartridge may need replacing. To replace the cartridge, see “Replacing the Photo Cartridge” on page 56.
- ❑ The print head may need aligning; see “Aligning the Print Head” on page 63.

Your printout is blurry or smeared.



- ❑ Use only paper recommended by Epson to ensure proper saturation, ink absorption, and quality. See “Ink and Paper” on page 74.
- ❑ Make sure you load paper with the glossy side face up.
- ❑ Make sure your paper is not damp or curled, or loaded face down (the glossy side should be face up). If it is damp or curled, load a new stack of paper.

Your printout is faint or has gaps in the image.



- ❑ The print head may need aligning; see “Aligning the Print Head” on page 63.

- ❑ The print head nozzles may need cleaning; see “Cleaning and Checking the Print Head Nozzles” on page 62 for instructions.
- ❑ The photo cartridge may be old or low on ink. To replace the photo cartridge, see “Replacing the Photo Cartridge” on page 56.
- ❑ Make sure your paper is not damaged, old, dirty, or loaded face down. If it is, reload a new stack of paper with the glossy side up.

Colors in your photo are wrong or missing.

- ❑ Make sure the Color Effect setting is set to None for color photos.
- ❑ The print head nozzles may need cleaning; see “Cleaning and Checking the Print Head Nozzles” on page 62.
- ❑ The photo cartridge may be old or low on ink. To replace the cartridge, see “Replacing the Photo Cartridge” on page 56.

Problems With Paper Feeding

Paper does not eject fully or is wrinkled.

If it is wrinkled when it ejects, the paper may be damp or too thin.

Paper does not feed correctly or jams in the printer.

- ❑ Make sure the top cover is open, and is not leaning on the handle. The handle should be back of PictureMate. Make sure the handle is not resting on the paper. See “Loading Paper” on page 16.
- ❑ If paper does not feed, remove it from paper feeder, reload it in the center, then slide both edge guides against the paper (but not too tightly).
- ❑ If multiple pages feed at once, remove the paper from the paper feeder, separate the sheets, and carefully reload it.
- ❑ If paper jams, remove the paper, then press the OK button to clear the jam.

- ❑ Load paper glossy side up. Load up to a maximum of 20 sheets for photo papers, or 1 sheet for Photo Sticker. Place the paper in the center and slide both edge guides against it, but not so tight that paper cannot move.
- ❑ Do not load plain paper; this may damage PictureMate.
- ❑ Make sure you are using available paper for PictureMate (see “Ink and Paper” on page 74). Store paper flat to help prevent curling.

Miscellaneous Printout Problems

The printer prints blank pages.

The print head may need cleaning. See “Cleaning and Checking the Print Head Nozzles” on page 62.

The borders or layout are incorrect.

- ❑ Check your Layout setting to see if it is correct. See “Making Paper and Print Layout Settings” on page 31.

- ❑ If you have a border on one side of your photo but not the other, make sure the paper is placed in the center of the paper feeder. Slide the edge guides against the paper.
- ❑ If the subject of your photo is very close to the edge of the image, you can change the amount of cropping around the edge of the image for Borderless printing by using Borderless Expansion from the Setup menu. If you see a white line around the edge of the print, select MID or MAX.

The wrong photo is printed.

- ❑ If your camera supports DPOF, you can preselect photos so PictureMate will print only the ones you want. See “Printing Camera-Selected DPOF Photos” on page 30.
- ❑ If your camera is PictBridge- or USB DP-enabled, you can connect it to PictureMate and control printing from your camera. See “Printing From a PictBridge-Enabled Camera” on page 43.

Contacting Customer Support

Regional Customer Services

If your Epson product is not operating properly and you cannot solve the problem using the troubleshooting information in your product documentation, contact customer support services for assistance. If customer support for your area is not listed below, contact the dealer where you purchased your product.

Customer support will be able to help you much more quickly if you give them the following information:

- Product serial number
(The serial number label is usually on the back of the product.)
- Product model
- Product software version
(Click About, Version Info, or similar button in the product software.)
- Brand and model of your computer

- Your computer operating system name and version
- Names and versions of the software applications you normally use with your product

Note:

For more information on Contacting Customer Support, see the Online User's Guide included in the software CD-ROM.

Singapore	
URL	http://www.epson.com.sg
Telephone	(65) 6586 3111
Thailand	
URL	http://www.epson.co.th
Telephone	(66) 2-670-0333
Vietnam	
Telephone	84-8-823-9239
Indonesia	
URL	http://www.epson.co.id

Telephone/Fax	Jakarta: (62) 21-62301104
	Bandung: (62) 22-7303766
	Surabaya: (62) 31-5355035/31-5477837
	Medan: (62) 61-4516173
Telephone	Yogyakarta: (62) 274-565478
	Makassar: (62) 411-350147/411-350148
Hong Kong	
URL	http://www.epson.com.hk
Phone	(852) 2827-8911
Fax	(852) 2827-4383
Malaysia	
URL	http://www.epson.com.my
Phone	603-56288333
India	
URL	http://www.epson.co.in
Phone	30515000
FAX	30515005/30515078
Philippines	
URL	http://www.epson.com.ph
Phone	(63) 2-813-6567

Fax	(63) 2-813-6545
E-mail	epchelpdesk@epc.epson.com.ph

Ink, Paper, and Options

Ink and Paper

The following photo cartridge and Epson special paper are available for PictureMate. This information is only for standalone operation.

PictureMate PicturePack (PictureMate Photo Cartridge and 150 sheets of PictureMate Photo Paper)	T5852
Epson Ultra Glossy Photo Paper 10 × 15 cm (4 × 6 in.)	S041926 S041943
Epson Premium Glossy Photo Paper 10 × 15 cm (4 × 6 in.)	S041706 S041729 S041730 S041750
Epson Glossy Photo Paper 10 × 15 cm (4 × 6 in.)	S042068 S042070 S042072
Epson Premium Semigloss Photo Paper 10 × 15 cm (4 × 6 in.)	S041925
Epson Photo Stickers 100 × 148 mm	*
Epson Photo Stickers 16 100 × 148 mm	*

* For update information, check the Epson support site.

Note:

- The availability of special paper varies by location.*
- A6 size pre-cut 4-up and 16-up Epson Photo Stickers are not available.*
- Please check your local Epson customer support Web site where to buy or visit your local dealer.*
➔ *See “Contacting Customer Support” on page 72*
- If you want to use paper other than the types listed above, refer to the online User’s Guide manual.*

Options

Bluetooth Photo Print Adapter

Bluetooth Photo Print Adapter 2 C12C82438*

Note:

The asterisk is a substitute for the last digit of the product number, which varies by location.

➔ See “Printing From a Bluetooth Device” on page 45

Lithium Ion Battery

An optional rechargeable battery means you can use PictureMate without the AC adapter.

Lithium Ion Battery C12C83108*, model D121A

Note:

The asterisk is a substitute for the last digit of the product number, which varies by location.

For details on using the optional battery, see the following section.

Using the Optional Battery

Note:

- ❑ *Install the battery after installing the first photo cartridge and after ink charging is finished.*
- ❑ *You cannot save data on the memory card to an external device when using the battery. Connect the AC adapter to PictureMate when you save data.*
- ❑ *When you copy data on a computer to your memory card, confirm that there is enough power in the battery. If the battery runs out, saving is canceled, and corrupted data may remain on the memory card.*

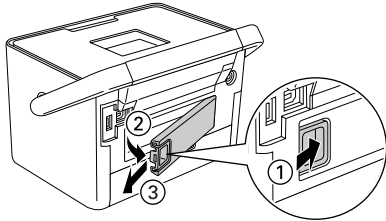
For safety instructions for the battery, see “When using the optional battery” on page 5.

Installing the battery

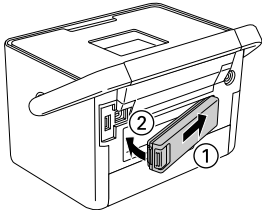
Follow the steps below to install the battery.

1. Make sure that PictureMate is turned off.
2. Unplug the AC adapter from the printer.

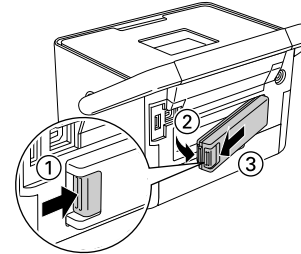
3. Press the release latch and remove the battery cover.



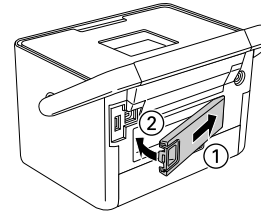
4. Insert the battery into the compartment in the direction shown below until it is fixed in place.



2. Press the release latch and pull out the battery.



3. Attach the battery cover as shown below.



Removing the battery

1. Make sure that PictureMate is turned off.



Charging the battery

After installing the battery, charge the battery using the AC adapter.

1. Make sure that the battery is installed.

2. Connect the power cord and AC adapter, then plug in PictureMate.

When PictureMate is off, the power light blinks during charging. When the battery is fully charged, the power light turns off.



When PictureMate is on during charging,  icon blinks on the LCD screen. When the battery is fully charged,  icon appears.




Note:

The battery may not be charged correctly if the temperature of the operation is not guaranteed.

Checking the battery status

The battery status is always displayed at the top right corner of the LCD screen.

Icon	Status
	Sufficient battery power
	When the icon is green, battery power is low. When the icon is red, battery power is almost empty.

Icon	Status
	Battery power is running out.
	Battery is charging.
	Battery is fully charged.

Battery performance

Charging Time	Approx. 120 minutes (Approx. 150 minutes at maximum)
Continuous Print Time	Approx. 100 minutes *
Number of Prints	Approx. 100 sheets (4 × 6 in.) *

* When printing from a memory card with a fully charged, fresh battery, at room temperature. The number of sheets varies depending on the memory card, data size, and other conditions.

Auto Power Off

When the battery is used to power PictureMate, PictureMate will automatically turn off to save battery power if it is idle for about 15 minutes.

Note:

When a memory card is inserted and PictureMate is connected to a computer, it will not turn off automatically.

Printer Specifications

Mechanical

Dimensions	Storage Width: 215 mm (8.5 inches) Depth: 152 mm (6.0 inches) Height: 145 mm (5.7 inches)
	Printing Width: 215 mm (8.5 inches) Depth: 339 mm (13.3 inches) Height: 261 mm (10.3 inches)
Printable area	Border printing: 3 mm margin for all sides of photo paper, and 17 mm margin on the bottom and 3 mm margin on the other sides for Photo Sticker Borderless printing: 0 mm margin
Paper tray capacity	Photo paper: 20 sheets
	Photo Sticker: 1 sheet
Weight	2.4 kg (5.3 lb) without AC adapter and photo cartridge

Electrical

Rating

Printer

	AC adapter operated	Optional battery operated
Input	DC 20 V, 1.6 A	DC 14.8 V, 1.1 A

AC Adapter

Model	A381H
Input	AC 100-240 V, 50-60 Hz, 0.8-0.4 A, 42 W
Output	DC 20 V, 1.68 A

Printer Operated by AC Adapter

		When not charging optional battery		When charging optional battery	
		AC 100-120 V Input	AC 220-240 V Input	AC 100-120 V Input	AC 220-240 V Input
Power consumption using AC adapter	Continuous printing	Approx. 19 W	Approx. 19 W	Approx. 34 W	Approx. 33 W
	Low power mode	Approx. 4.0 W	Approx. 4.0 W	Approx. 24 W	Approx. 24 W
	Power off mode	Approx. 0.4 W	Approx. 0.4 W	Approx. 25 W	Approx. 25 W
Input current using AC adapter (Continuous printing)		0.4 A (MAX 0.5 A)	0.2 A (MAX 0.3 A)	0.7 A (MAX 0.8 A)	0.4 A (MAX 0.5 A)

Environmental

Temperature	Operation: 10 to 35 °C (50 to 95 °F) Storage: -20 to 60 °C (-4 to 140 °F) 1 month at 40 °C (104 °F)
Humidity	Operation:* 20 to 80% RH

* Without condensation

Memory card slots

Card Slots	CF Type II card slot	Compatible with "CF+ and CompactFlash Specification 1.4"
	Memory Stick/ Memory Stick PRO card slot	Compatible with "Memory Stick Standard version 1.3" Compatible with "Memory Stick Standard Memory Stick PRO Format Specifications version 1.0"
	SD/ MMC card slot	Compatible with "SD Memory Card Specifications / PART1. Physical Layer Specification Version 2.00" Compatible with "MultiMediaCard Standard"
	xD-Picture card slot	Compatible with "xD-Picture Card™ Card Specification Version 1.20 Type M cards / Type H cards"

Compatible memory cards	CompactFlash Memory Stick* Memory Stick PRO Memory Stick Duo** Memory Stick PRO Duo** MagicGate Memory Stick* MagicGate Memory Stick Duo** Microdrive SDHC Memory Card SD Memory Card miniSDHC card** miniSD card** microSDHC card** microSD card** MultiMediaCard xD-Picture Card xD-Picture Card Type M xD-Picture Card Type H
Voltage Requirements	3.3 V 3.3 V/5 V Combined use Maximum current is 500 mA

* Maximum capacity is 128 MB.

** Adapter required.

Note:

For the latest information on memory cards available for your printer, contact your dealer or regional Epson sales office.

Photo Cartridge

PictureMate Photo Cartridge

Color	Black, Cyan, Magenta and Yellow
Cartridge life	Use within 6 months of opening the package.
Temperature	Storage: -30 to 40 °C (-22 to 104 °F) 1 month at 40 °C (104 °F) Freezing:* -15 °C (5 °F)

* Ink thaws and is usable after approximately 3 hours at 25 °C (77 °F).

External Storage Devices

Connectivity	Universal Serial Bus* Bit rate: 480 Mbps (High speed device) Connector type: USB Series A Data Encoding: NRZI Recommended cable length: Less than 1.8 meters
---------------------	--

* Not all USB devices are supported. Contact your regional customer support for details.

Standards and Approvals

Printer

U.S. model:

Safety	UL60950-1 CSA No.60950-1
EMC	FCC Part15 Subpart B Class B CAN/CSA-CEI/IEC CISPR22 Class B

European model:

EMC	EN55022 Class B EN55024 EMC Directive 89/336/EEC
-----	--

Australian model:

EMC	AS/NZS CISPR22 Class B
-----	------------------------

AC Adapter

U.S. model:

Safety	UL60950-1 CSA No.60950-1
EMC	FCC Part15 Subpart B Class B CAN/CSA-CEI/IEC CISPR22 Class B

European model:

Safety	Low Voltage Directive 72/23/EEC EN60950-1
EMC	EMC Directive 89/336/EEC EN55022 Class B EN55024 EN61000-3-2 EN61000-3-3

Australian model:

Safety	AS/NZS 60950.1
EMC	AS/NZS CISPR22 Class B

Index

A

All photos, 23
Auto correct photo, 33

B

Battery
 buying, 75
 using, 75
Black and white printing, 14
Blank pages, 71
Bluetooth, 45, 75
Blurry prints, 69

C

Camera
 printing from, 43
 selected photos (DPOF), 30
Care of PictureMate, 62
Carrying PictureMate, 60
CD
 printing from, 41
 saving files to, 53
CD Index, 13
Cell phone
 printing from, 45
Charging ink, 68

Cleaning
 printer, 65
 print head, 62
Clip art, 35
Clogged nozzles, 62
Color
 problems, 70
Consumables, 74
Crop
 photo, 36

D

Date Stamp, 34
Device
 external, 41 to 44
DPOF (Digital Print Order Format), 30

E

Edge guide, 17
Error Messages, 66
External device, 41 to 44

F

Faint images, 69
File formats, 12
Fix photo, 33

Flash memory drive
 printing from, 41
 saving files to, 53
Front cover, 17

G

Gaps in image, 69

I

Image
 formats, 12
 quality, 69 to 70
Incorrect colors, 70
Index sheet, 27
Ink, see Photo cartridge

J

Jams
 paper, 70
JPEG, 12

L

LCD screen
 messages, 66

M

Maintenance, 62
Manuals, 12
Margins

 incorrect, 71
Memory card
 compatibility, 81
 inserting, 20
 problems, 66, 68
 removing, 22
Memory Stick, 20
Microdrive, 20
Missing colors, 70
MMC (MultiMediaCard), 20

N

Noise
 PictureMate, 68
Nozzle check, 62
Nozzle cleaning, 62

O

On button, 20
Options, 74

P

Packing PictureMate, 60
Paper
 buying types, 74
 feeding problems, 70 to 71
 jam, 70
PDA
 printing from, 45
Photo

- formats, 12
- quality, 69 to 70
- Photo cartridge
 - buying, 74
 - replacing, 56 to 59
 - safety instructions, 8
- PictBridge, 11, 43
- PictureMate PicturePack, 74
- P.I.F. Frame, 38
- PIM (PRINT Image Matching), 11
- Power cable, 60
- Problems
 - memory card, 68
 - missing colors, 70
 - paper feeding, 70 to 71
 - paper jam, 70
 - print quality, 69 to 70

Q

- Quality, 69 to 70

R

- Removing
 - memory card, 22
 - photo cartridge, 56
- Resolution, 12

S

- Save photos, 53
- SD (Secure Digital) card, 20

- Sepia, 14
- Setup problems, 68
- Smears, 69

T

- Technical support, 72
- Thumb drive
 - printing from, 41
 - saving files to, 53
- TIFF, 12
- Transporting PictureMate, 60
- Troubleshooting, 66 to 71

U

- USB cable, 44, 60
- USB DP (USB Direct Print), 11, 43
- User's Guide, 13

X

- xD Picture Card, 20

Z

- Zip disk
 - printing from, 41
 - saving files to, 53



MEMORY STICK PRO™



410690400

Copyright© 2006 Seiko Epson Corporation. All rights reserved.
Printed in XXXXXX XX.XX-XX XXX